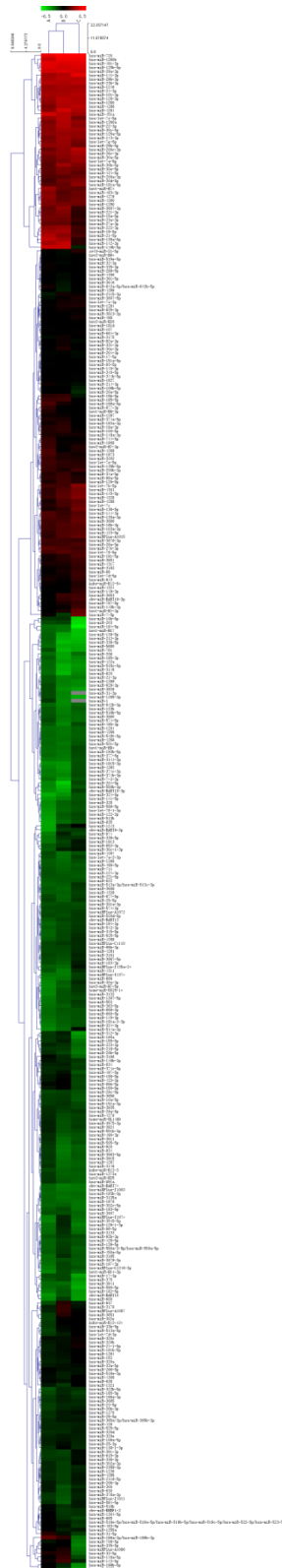


Supplementary Information

Figure S1. Results of the miRNA microarray.

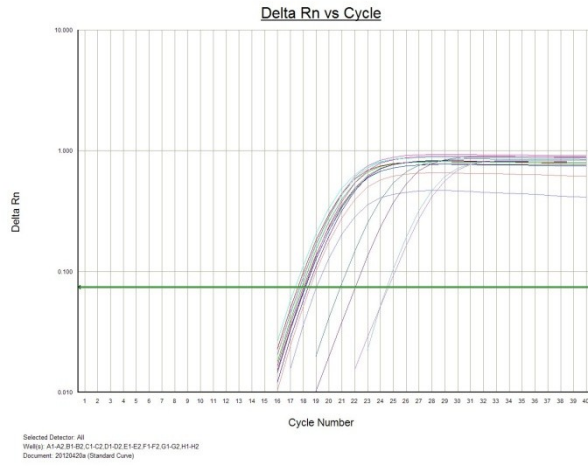


The heat map diagram shows the result of the two-way hierarchical clustering of miRNAs and samples. Each row represents a miRNA and each column represents a sample. The miRNA clustering tree is shown on the left, and the sample clustering tree appears at the top. The color scale shown at the top illustrates the relative expression level of a miRNA in the certain slide: Red color represents a high relative expression level; green color represents a low relative expression levels.

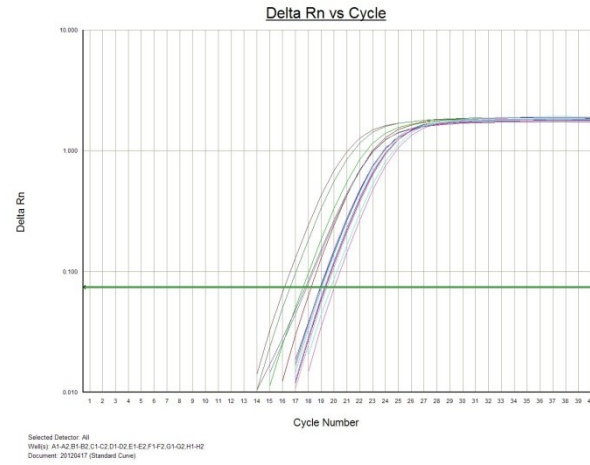
Figure S2. Results of the qRT-PCR.

Amplification curves of non-tumor tissues adjacent to PTC

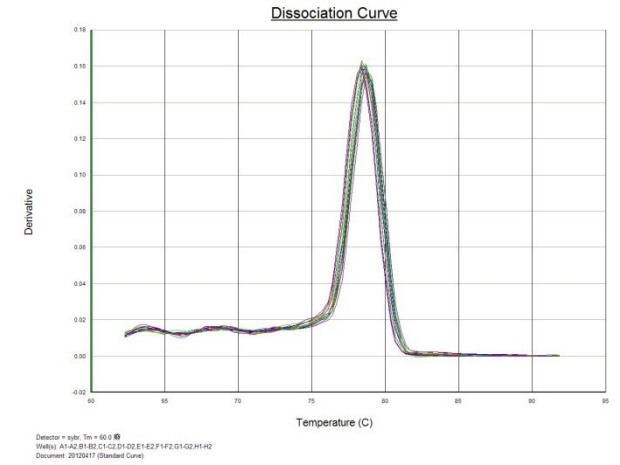
miR-30a-3p



Amplification curves of PTC tissues



solubility curves



miR-122-5p

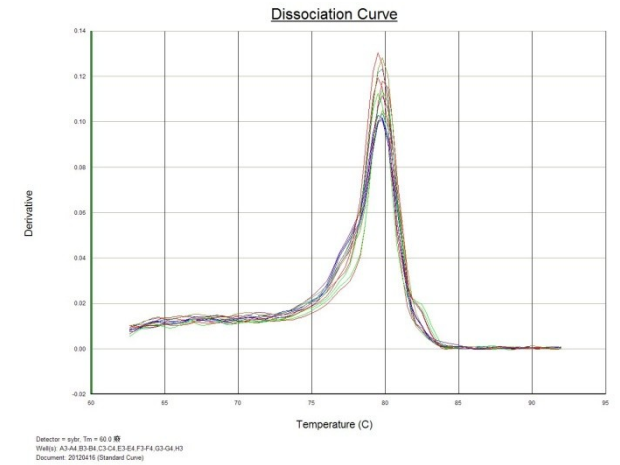
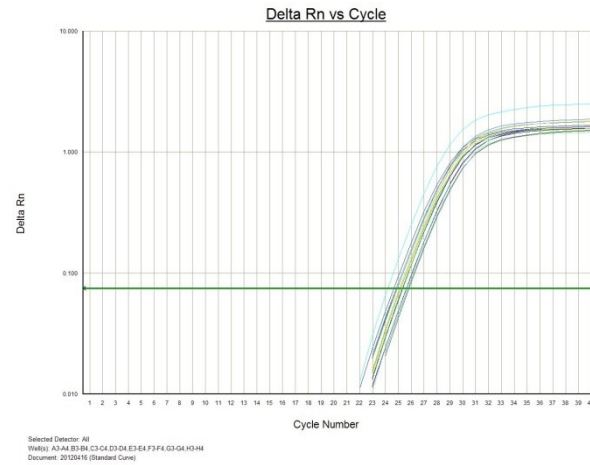
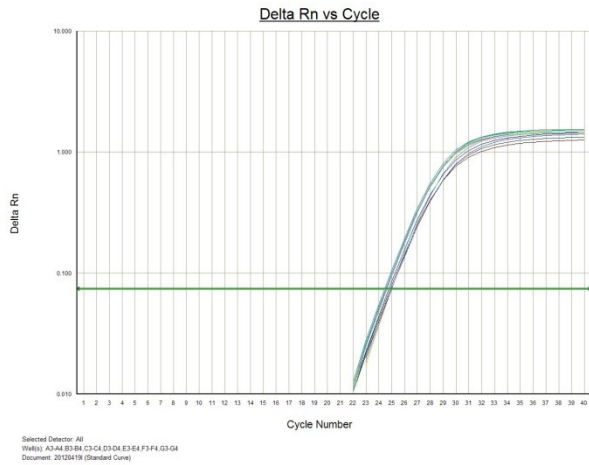
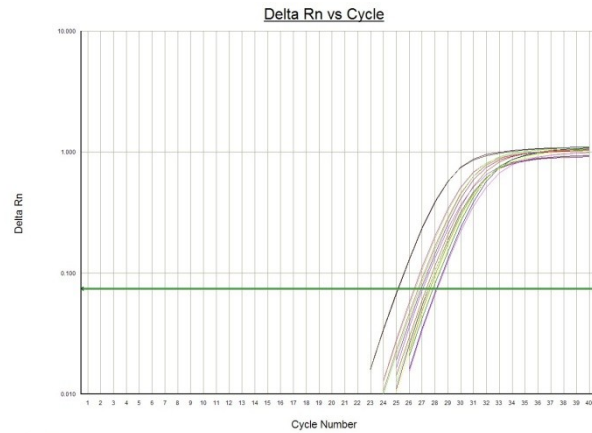


Figure S2. Cont.

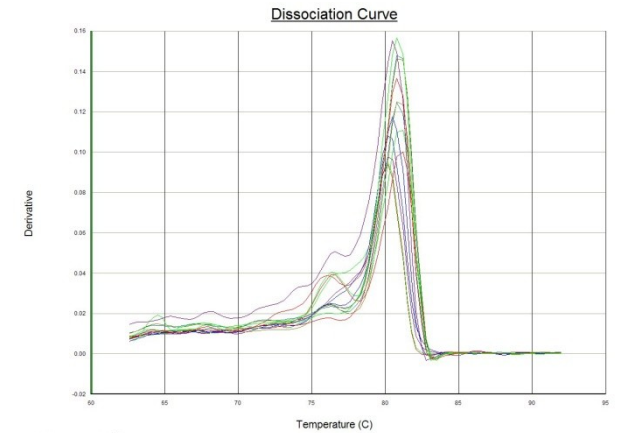
miR-136-5p



Selected Detector: All
Well(s): AG-AE,BS-BE,CS-CE,DE-DE,EE-EE,FF-FE,GG-GE,HH-HE
Document: 20120419 (Standard Curve)

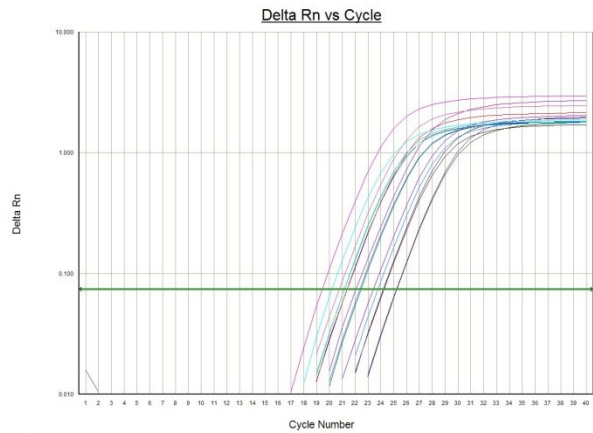


Selected Detector: All
Well(s): AG-AE,BS-BE,CS-CE,DE-DE,EE-EE,FF-FE,GG-GE,HH-HE
Document: 20120417 (Standard Curve)

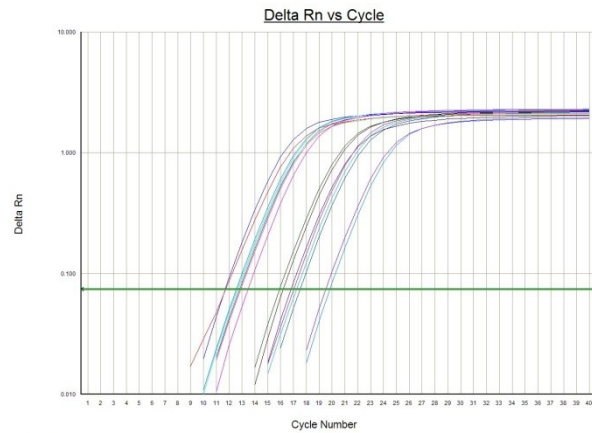


Detector = gds, Tm = 60.0 (°C)
Well(s): AG-AE,BS-BE,CS-CE,DE-DE,EE-EE,FF-FE,GG-GE
Document: 20120419 (Standard Curve)

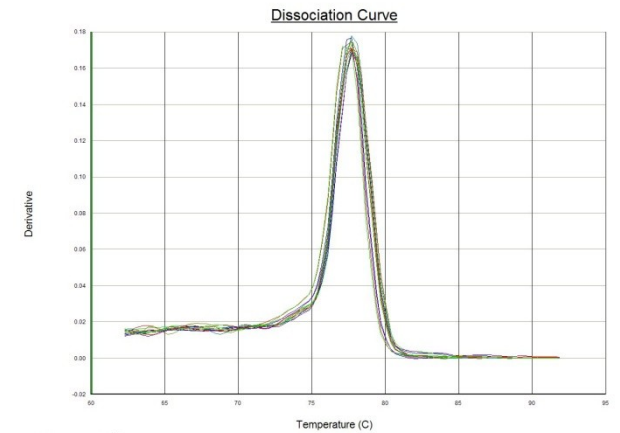
miR-146b-5p



Selected Detector: All
Well(s): AG-AE,BS-BE,CT-CE,DE-DE,EE-EE,FF-FE,GG-GE,HH-HE
Document: 20120419 (Standard Curve)



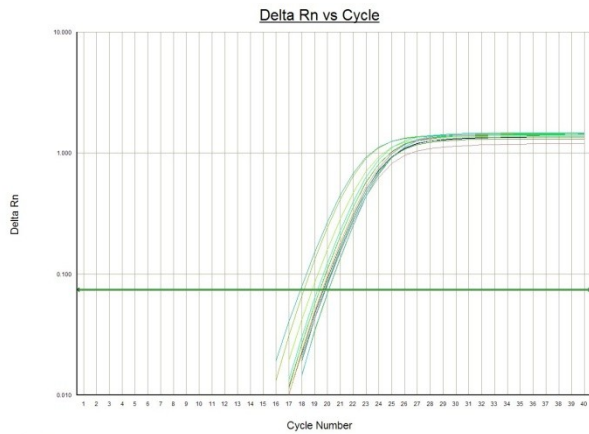
Selected Detector: All
Well(s): AG-AE,BS-BE,CT-CE,DE-DE,EE-EE,FF-FE,GG-GE,HH-HE
Document: 20120417 (Standard Curve)



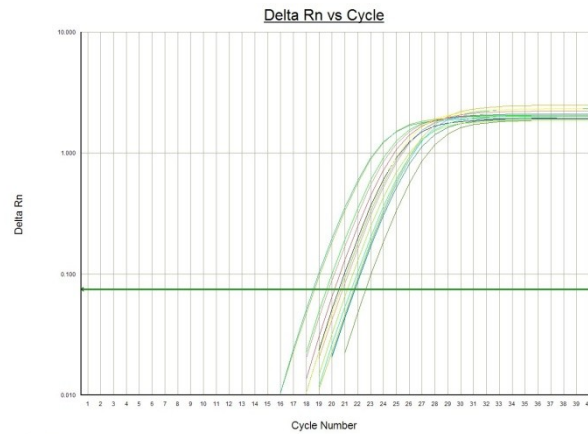
Detector = gds, Tm = 60.0 (°C)
Well(s): AG-AE,BS-BE,CT-CE,DE-DE,EE-EE,FF-FE,GG-GE
Document: 20120417 (Standard Curve)

Figure S2. Cont.

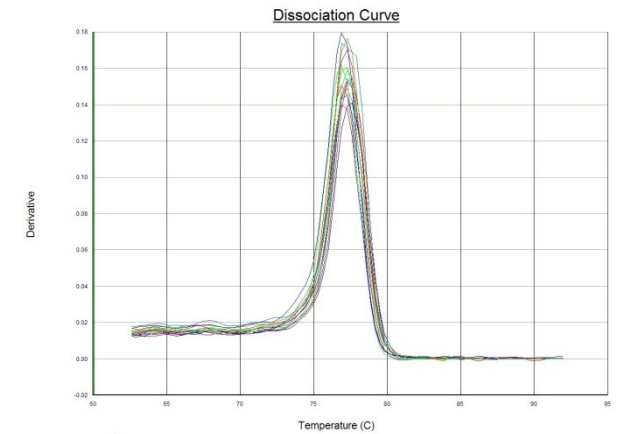
miR-199b-5p



Selected Detector: All
 Well(s): A3-A10, B9-B10, C9-C10, D9-D10, E9-E10, F9-F10, G9-G10
 Document: 20120419 (Standard Curve)

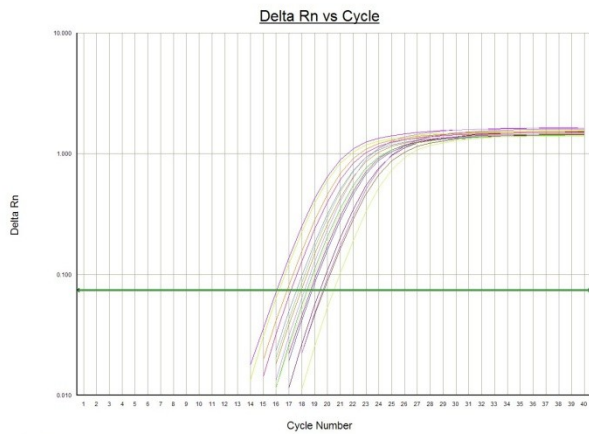


Selected Detector: All
 Well(s): A8-A10, B9-B10, C9-C10, D9-D10, E9-E10, F9-F10, G9-G10, H9
 Document: 20120419 (Standard Curve)

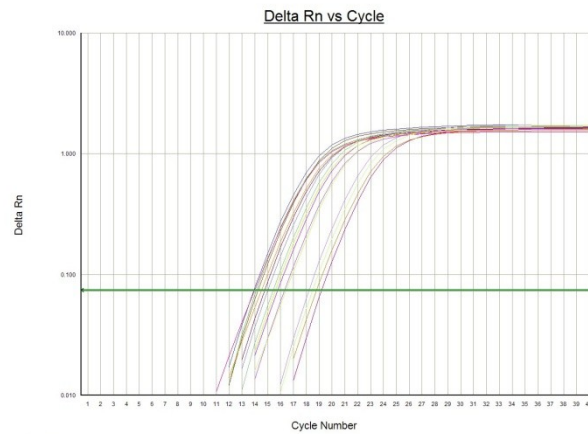


Detector: pabr, Tm = 60.0
 Well(s): A9-A10, B9-B10, C9-C10, D9-D10, E9-E10, F9-F10, G9-G10, H9
 Document: 20120419 (Standard Curve)

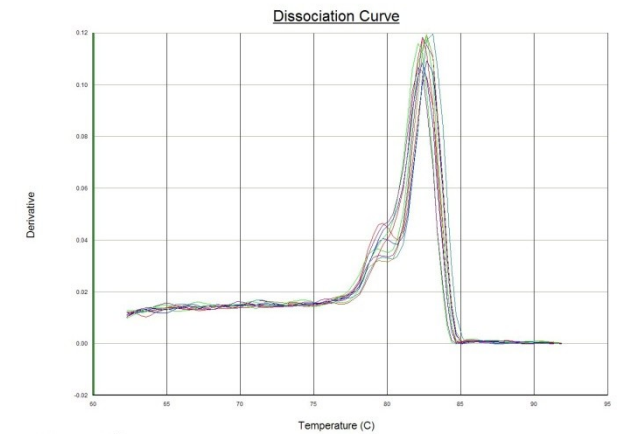
U6



Selected Detector: All
 Well(s): A11-A12, B11-B12, C11-C12, D11-D12, E11-E12, F11-F12, G11-G12, H11-H12
 Document: 20120419 (Standard Curve)



Selected Detector: All
 Well(s): A11-A12, B11-B12, C11-C12, D11-D12, E11-E12, F11-F12, G11-G12, H11-H12
 Document: 20120417 (Standard Curve)



Detector: pabr, Tm = 60.0
 Well(s): A11-A12, B11-B12, C11-C12, D11-D12, E11-E12, F11-F12
 Document: 20120417 (Standard Curve)

The amplification and solubility curves showed that miRNAs and U6 were all specifically amplified. The amplification curves were smooth, indicating that the samples were completely amplified. The solubility curves were single peaks, indicating specific amplification. The amplification curve for the empty control tube was mainly a horizontal line.