

Supplementary Materials

Figure S1. Time-course of changes (mean \pm SE, $n = 6$) in DBP of SHR after administering HWR and ADR extracts. Single oral administration was dosed at 500 and 1500 mg/kg body weight. Ultrapure water was used as the control (20 mL/kg body weight).

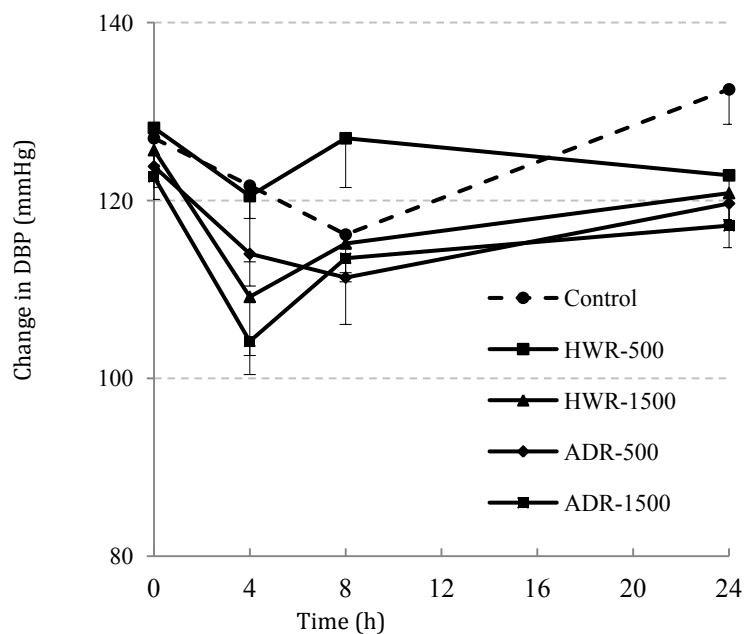
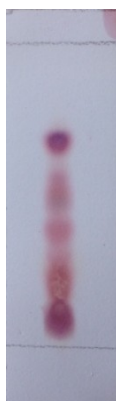


Figure S2. Ninhydrin staining of peptides and/or amino acid in the ≤ 3 kDa fraction of ADR extract.



Reishi's auto-digestion extract was spotted onto silica-gel plate (TLC Plate Silica Gel 60 F254, Merck, Darmstadt, Germany); the plate was eluted with *n*-butanol:acetic acid:water 3:1:1 (by volume) mixture followed by ninhydrin stain (Wako Pure Chemical, Osaka, Japan)

Figure S3. Preparative HPLC chromatogram of the ≤ 3 kDa fraction. Elution was performed with a linear gradient from 10% to 60% of B for 60 minutes at a flow rate of 5 mL/min.

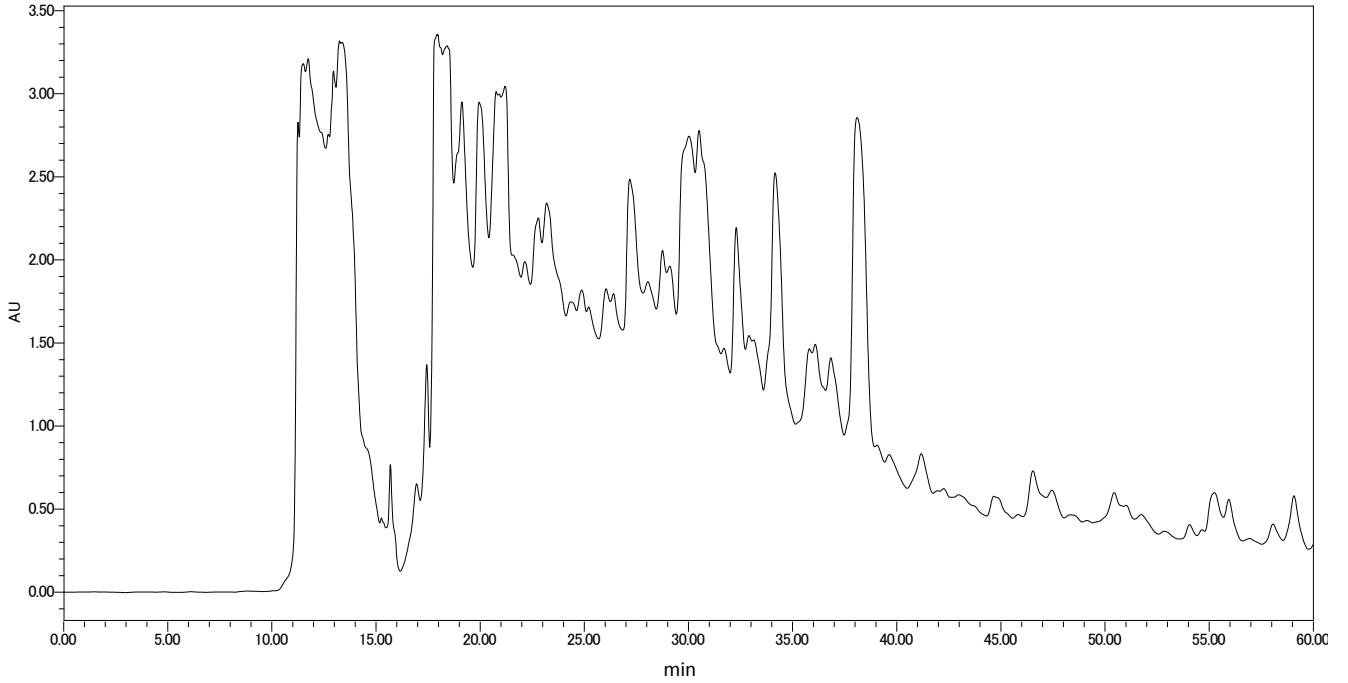
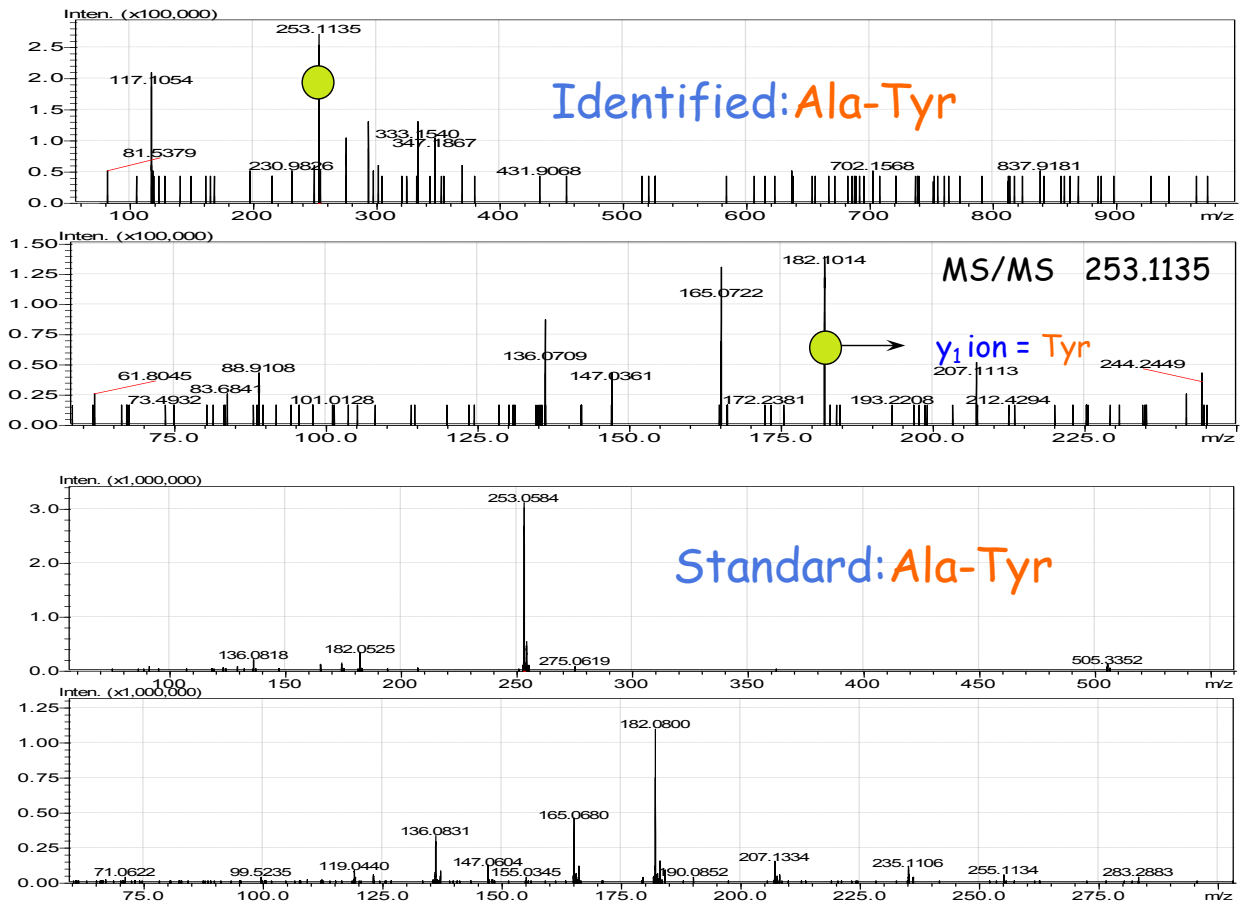
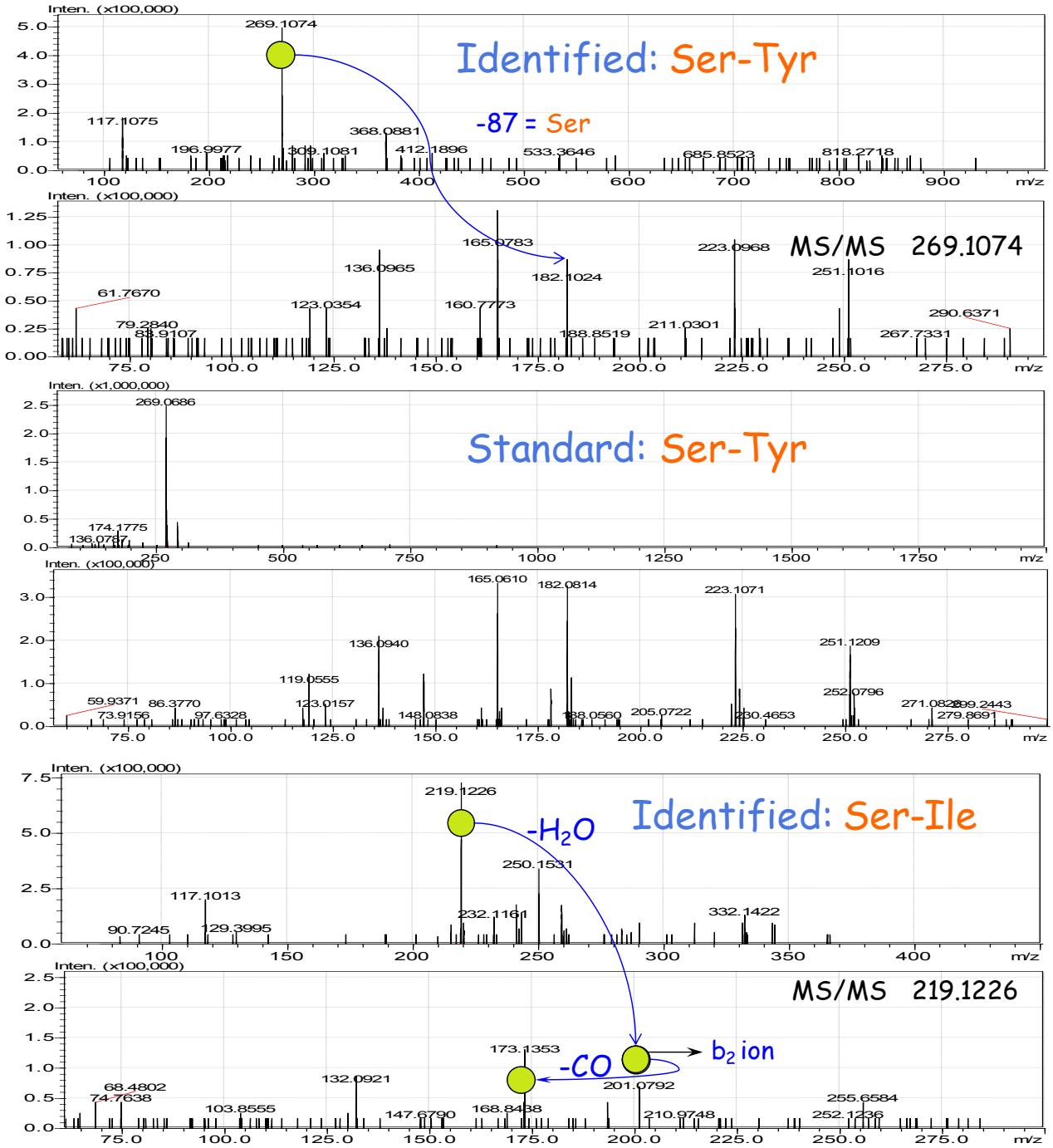
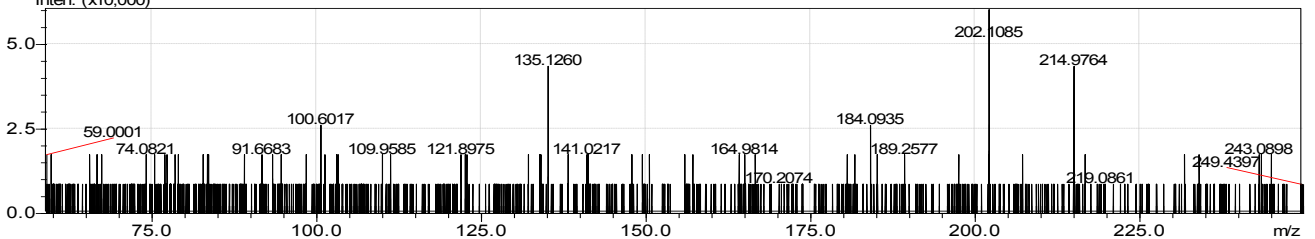
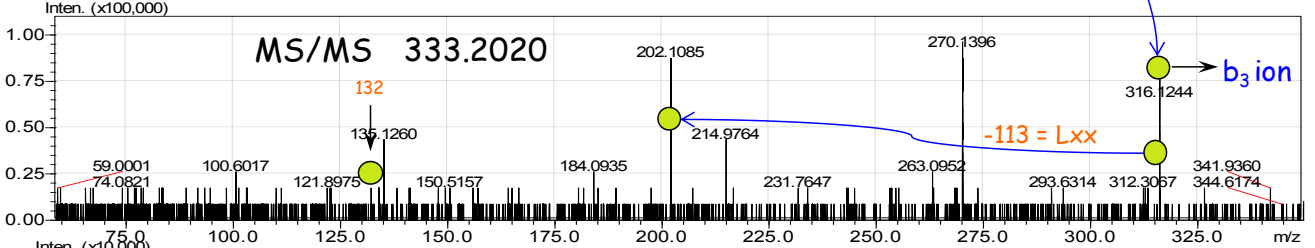
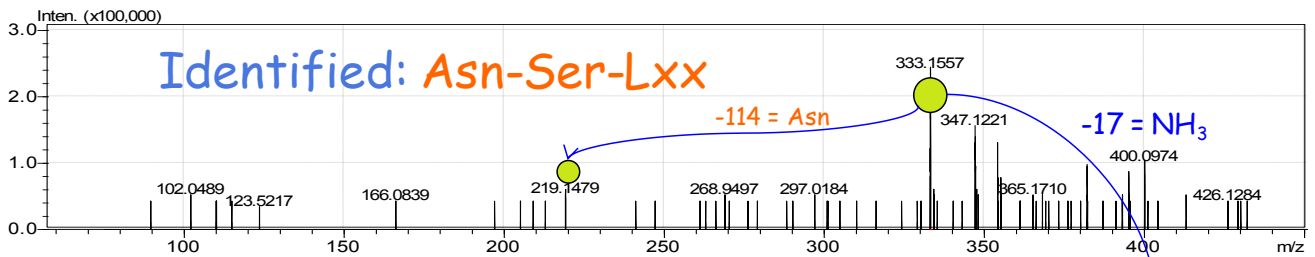
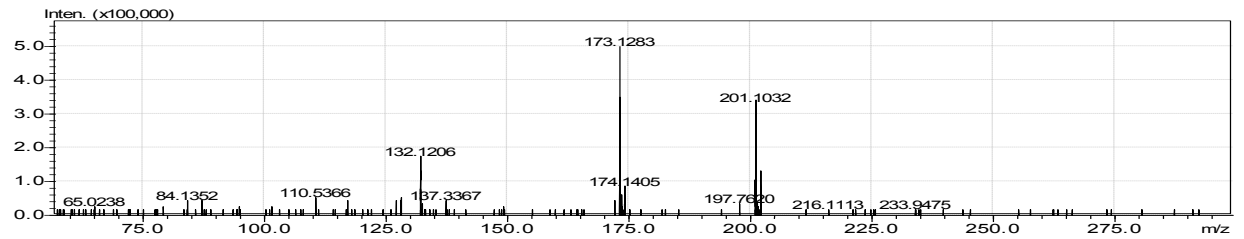
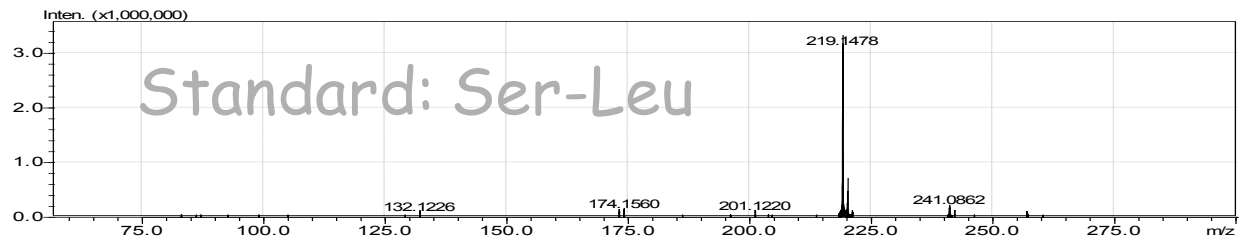
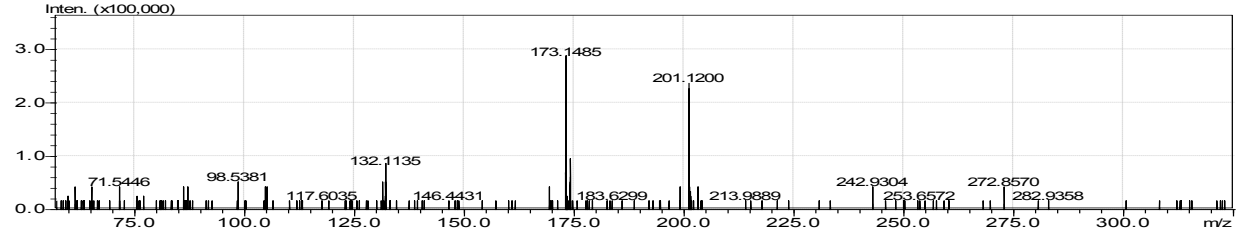
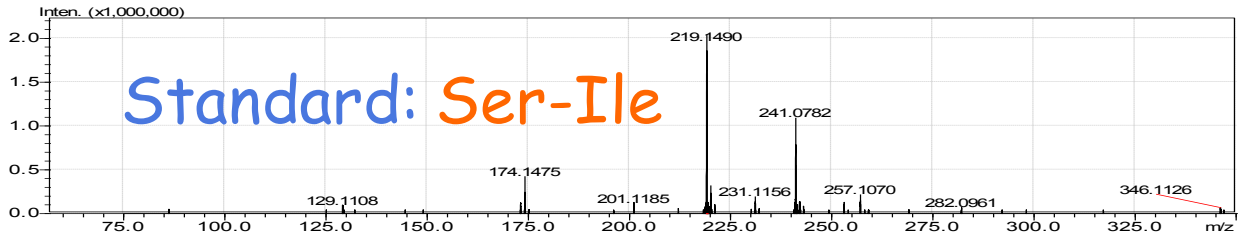
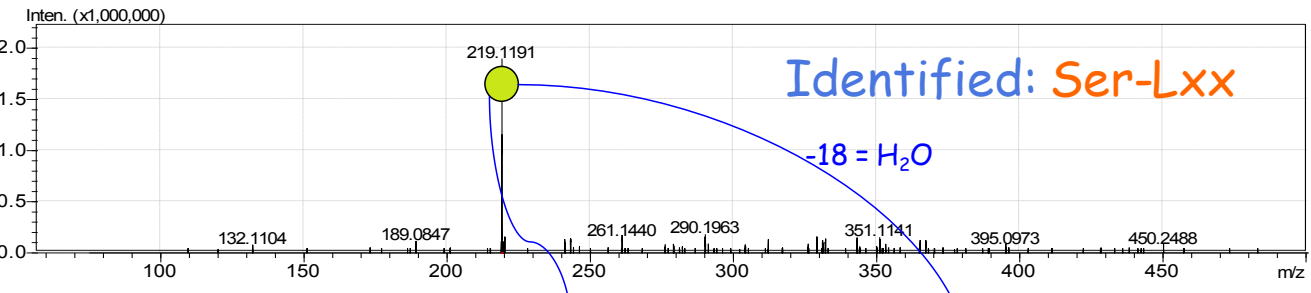
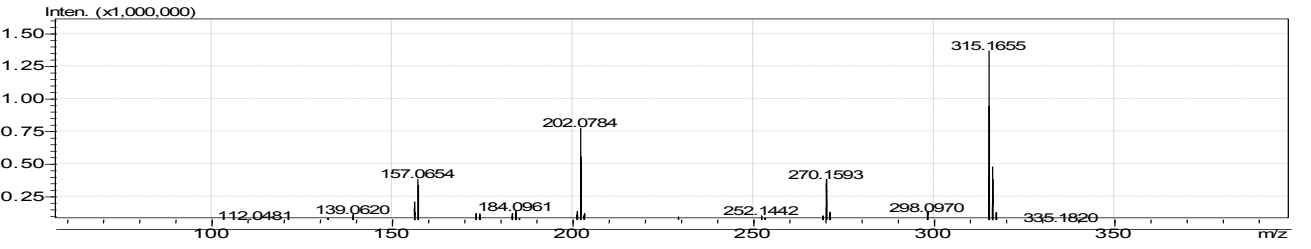
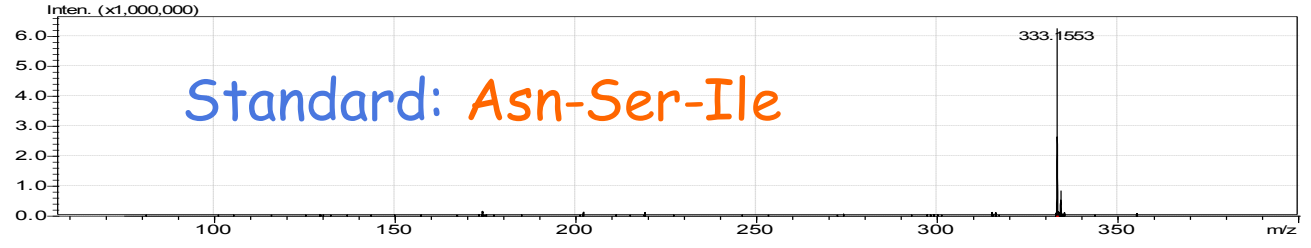
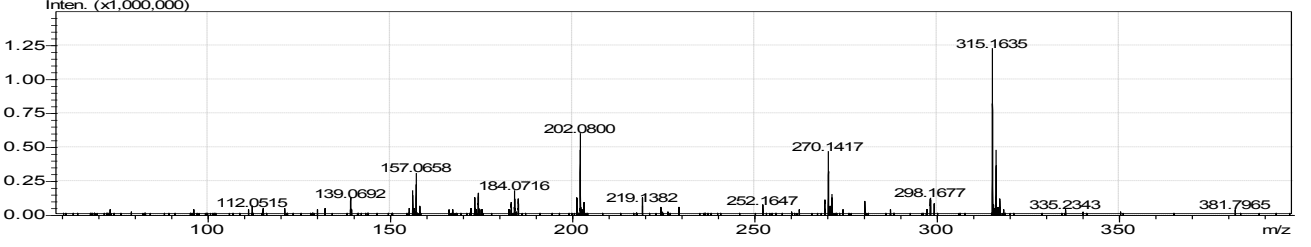
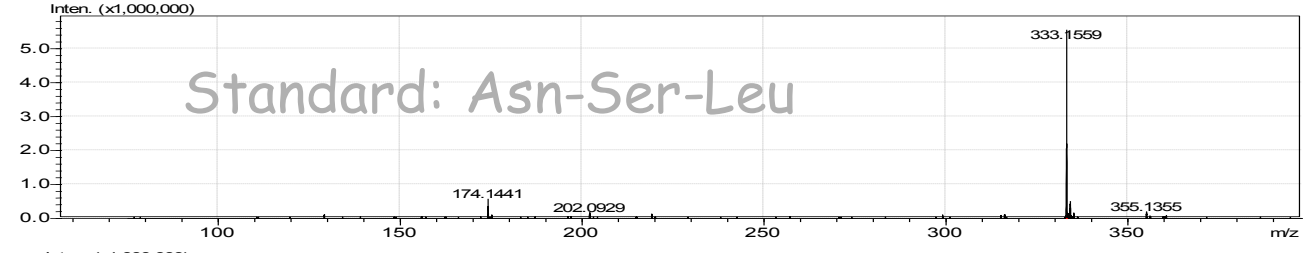


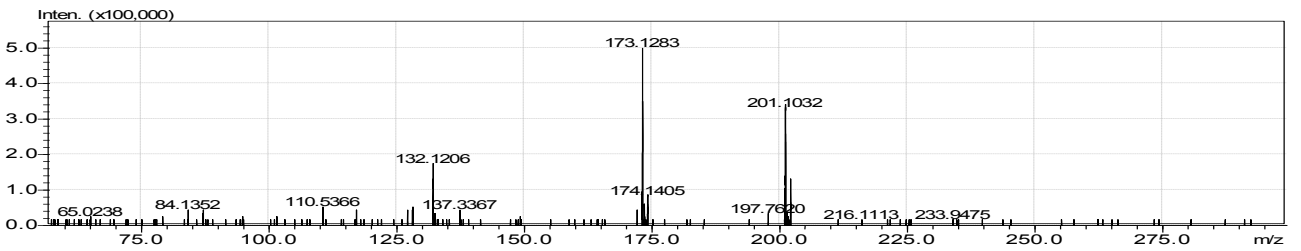
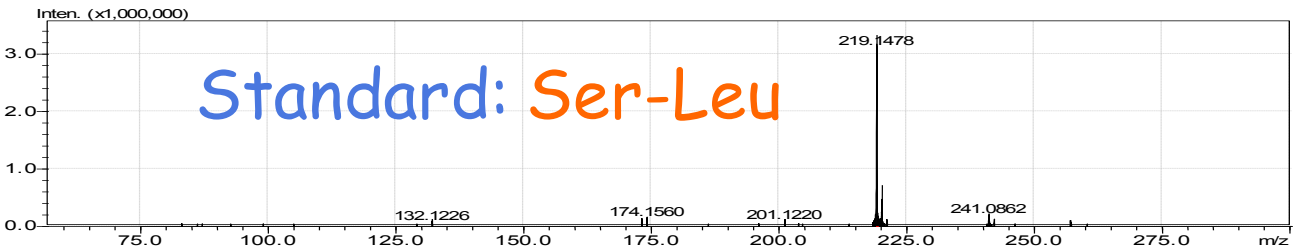
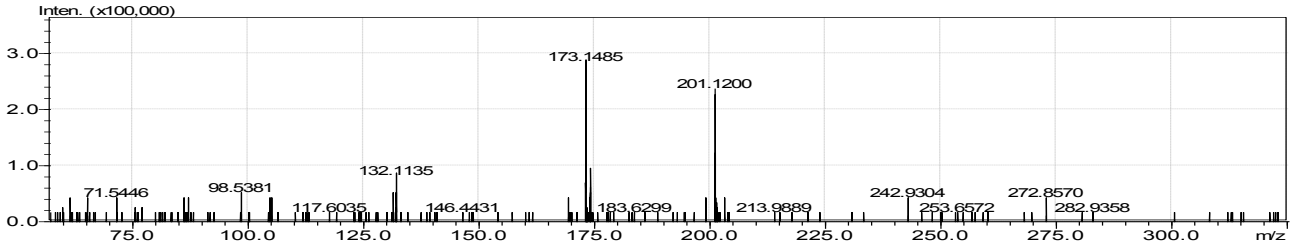
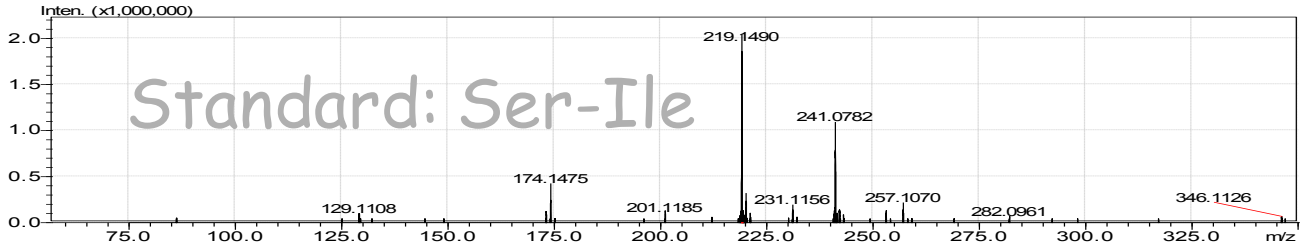
Figure S4. Mass spectra of identified peptide-candidates and corresponding standards.

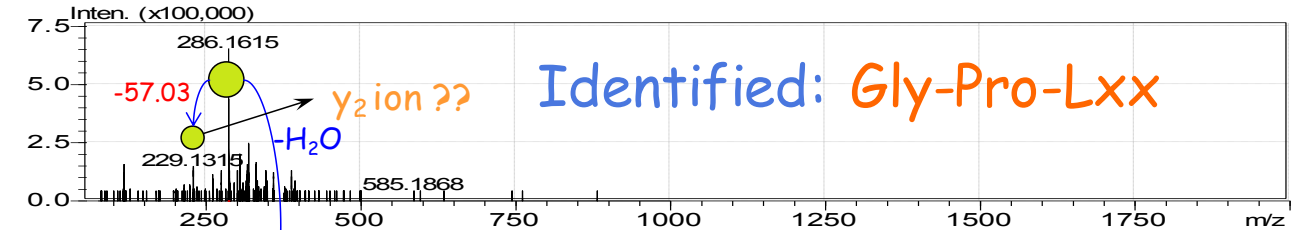
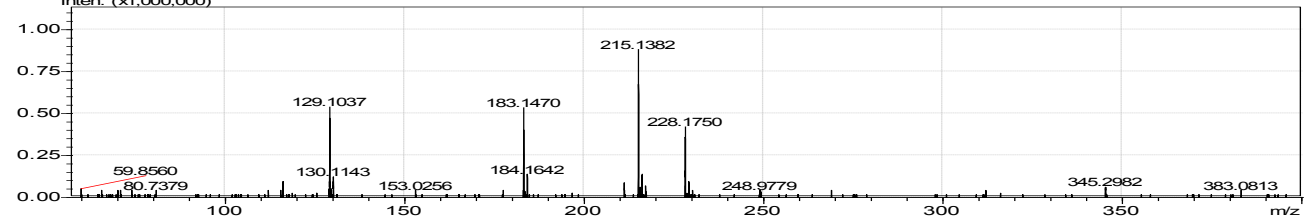
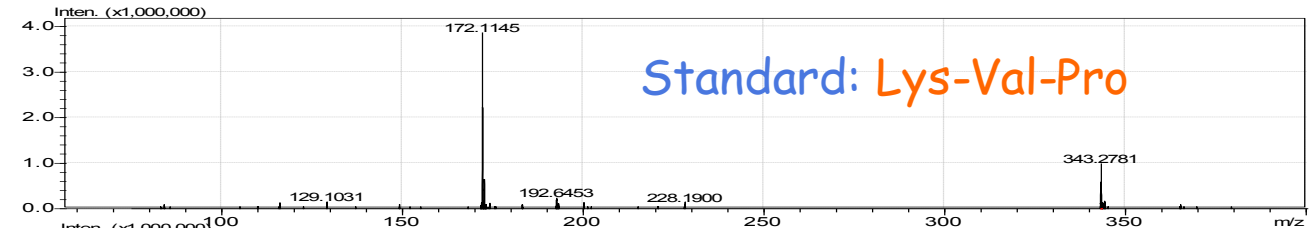
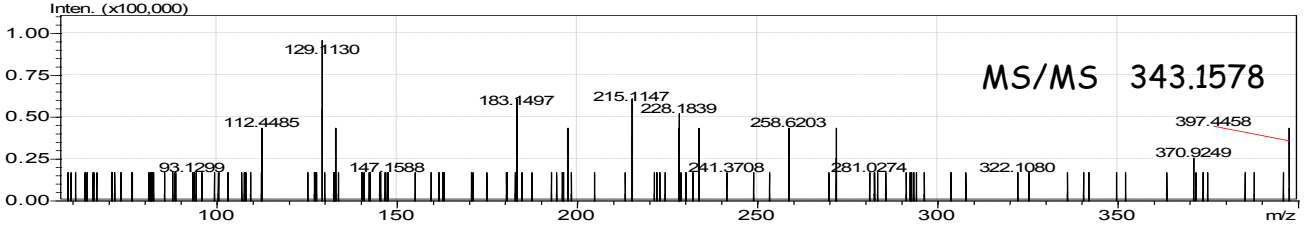
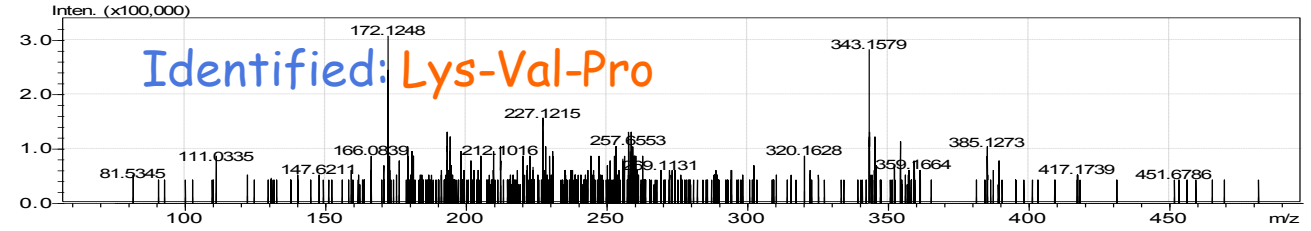




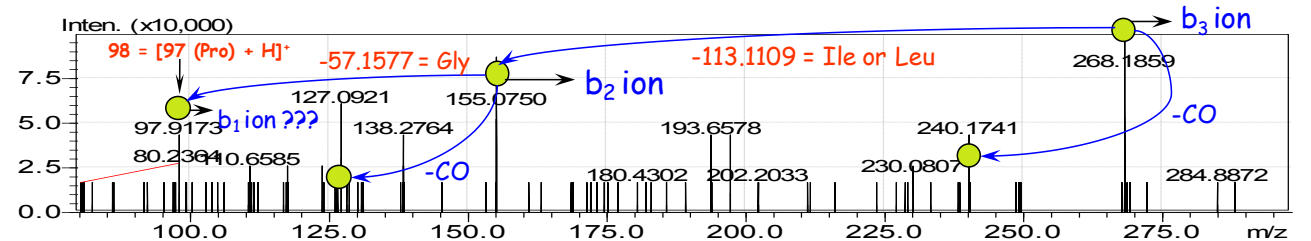
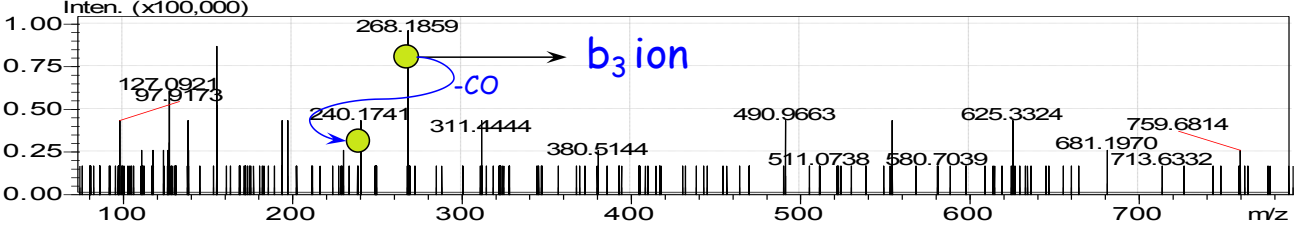
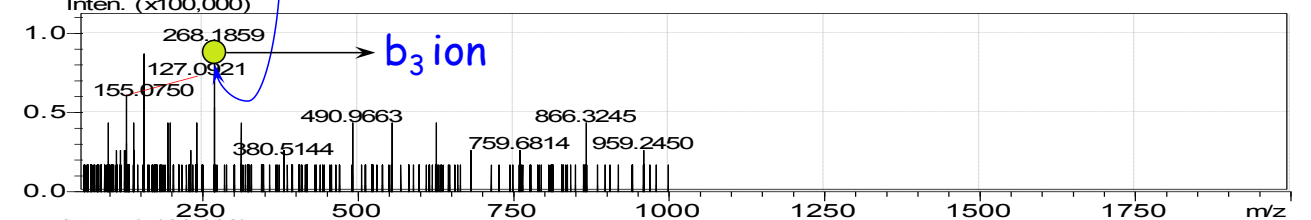


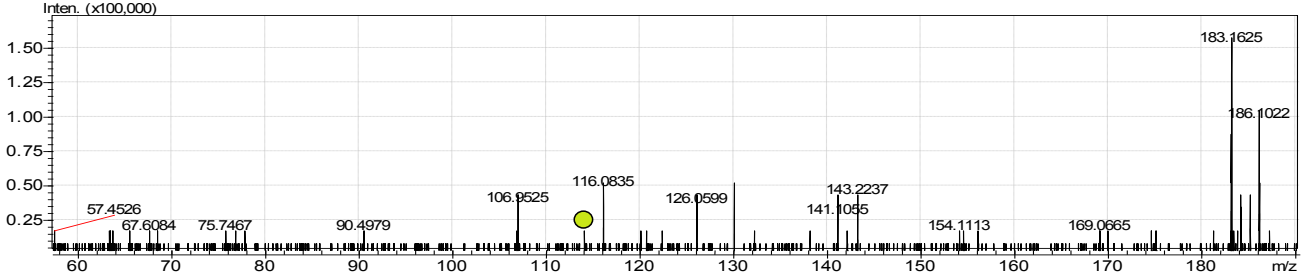
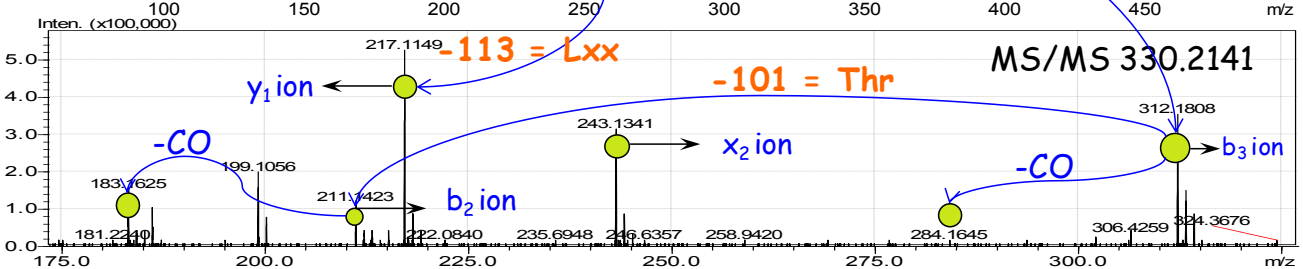
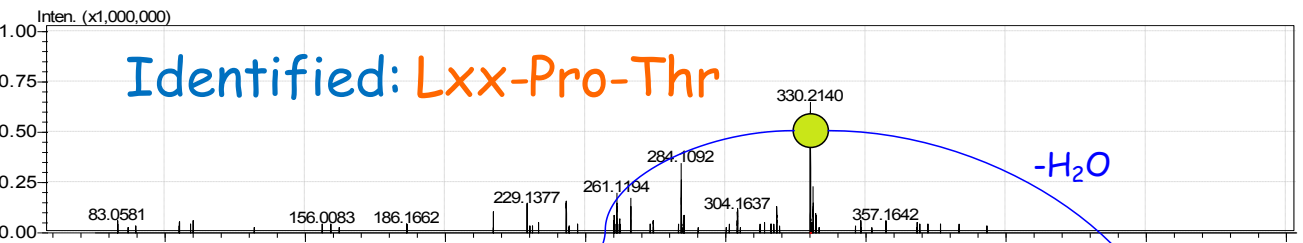
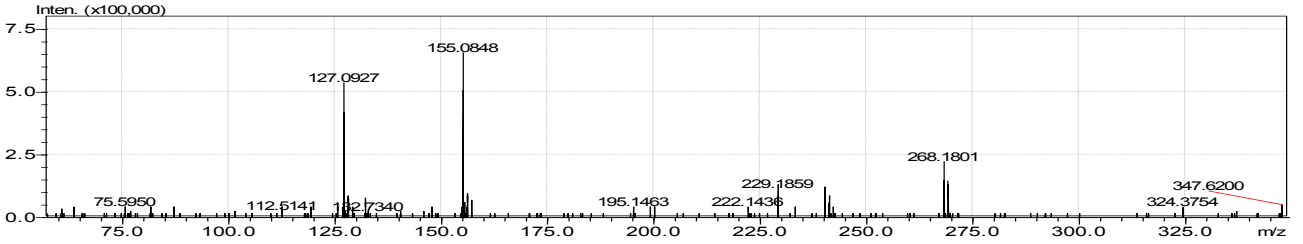
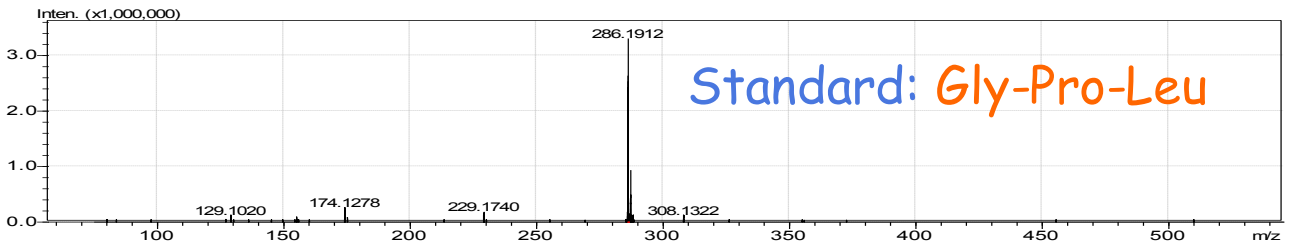
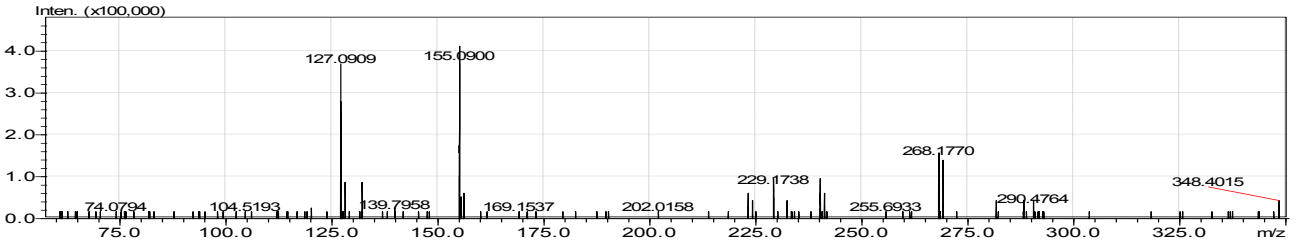
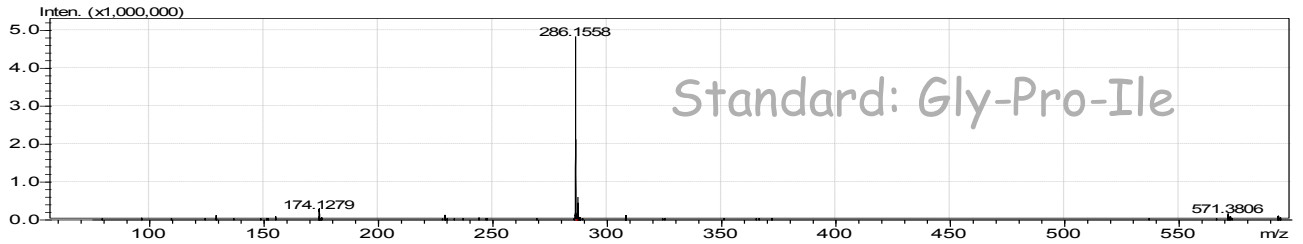


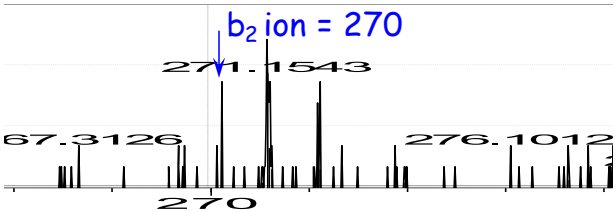
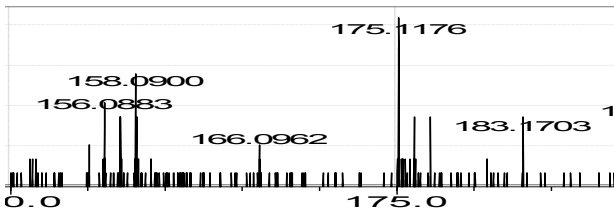
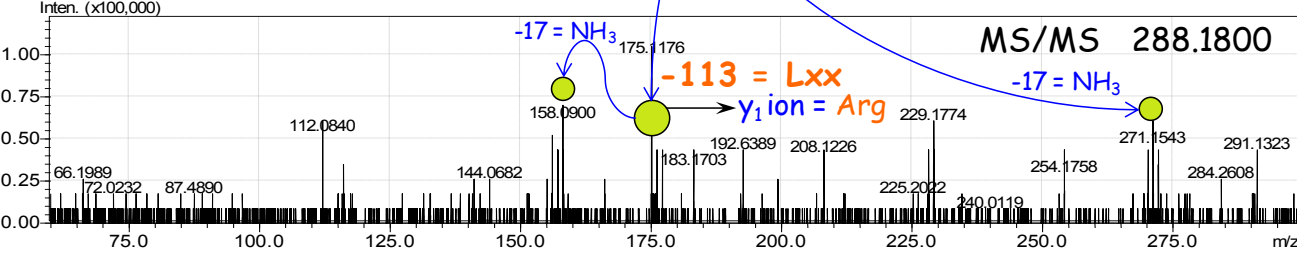
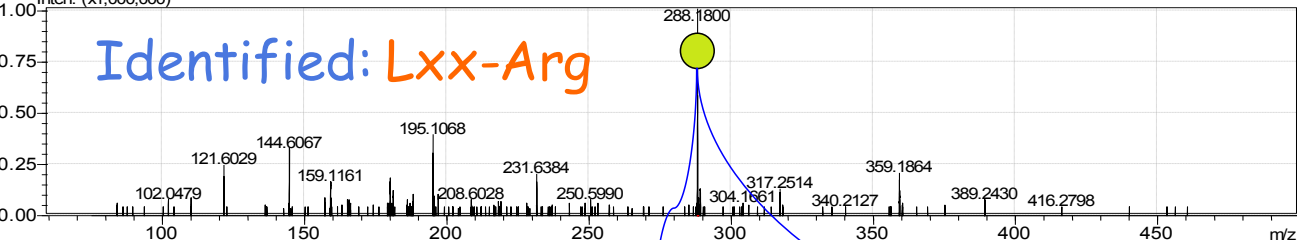
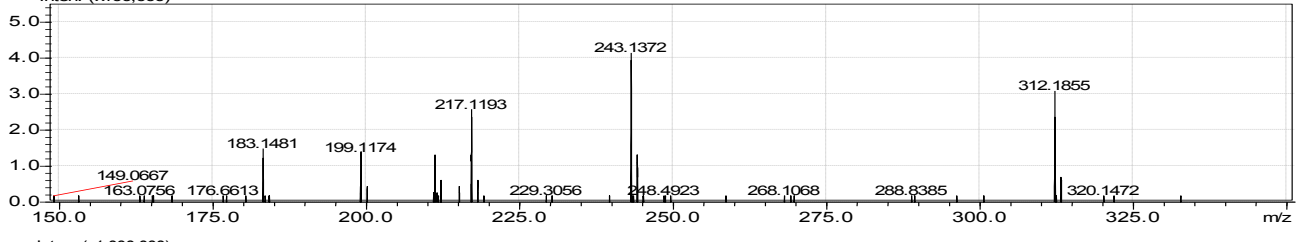
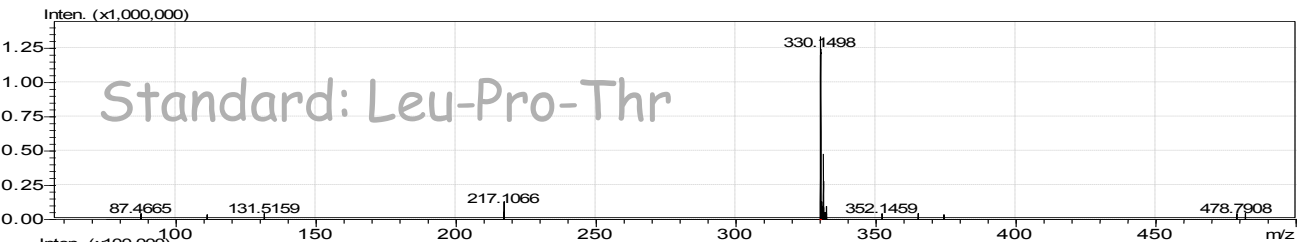
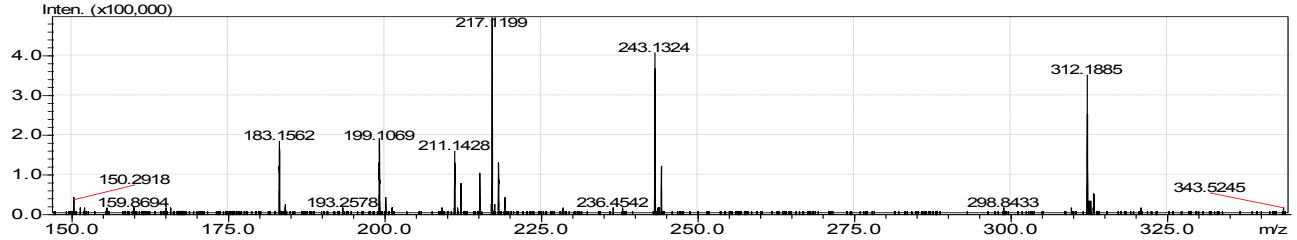
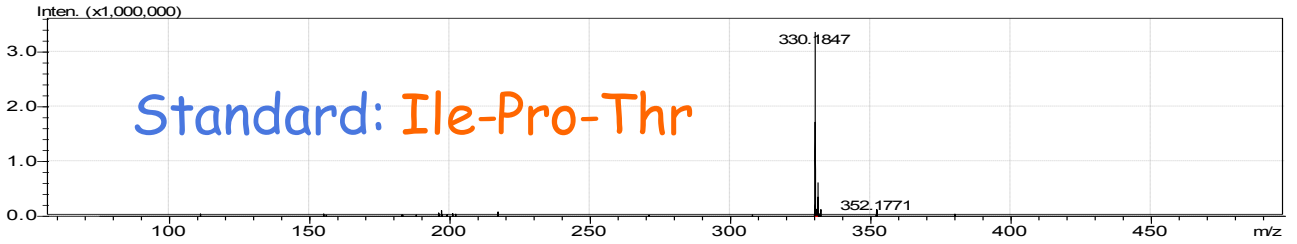


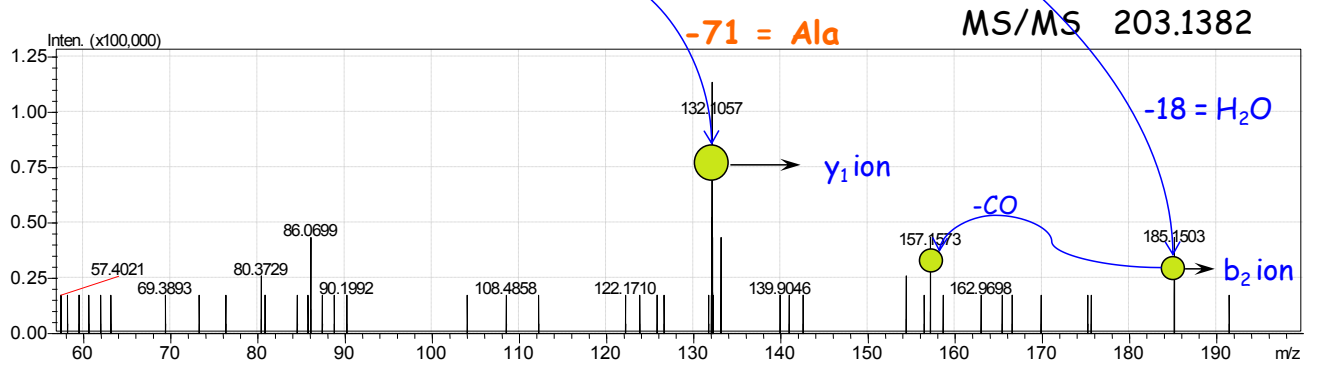
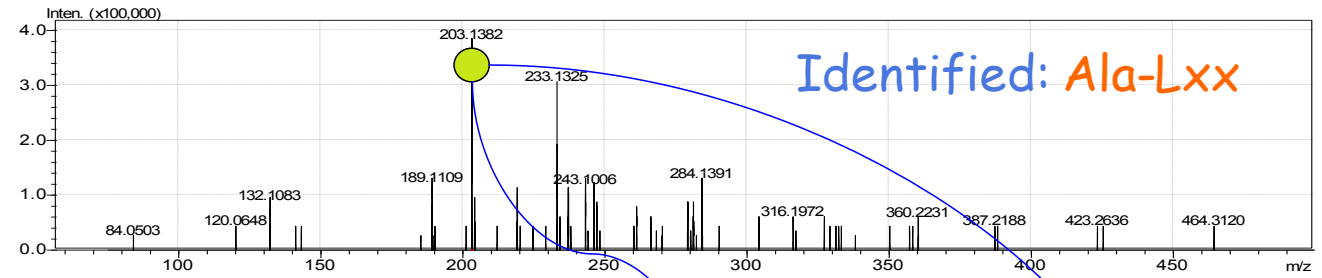
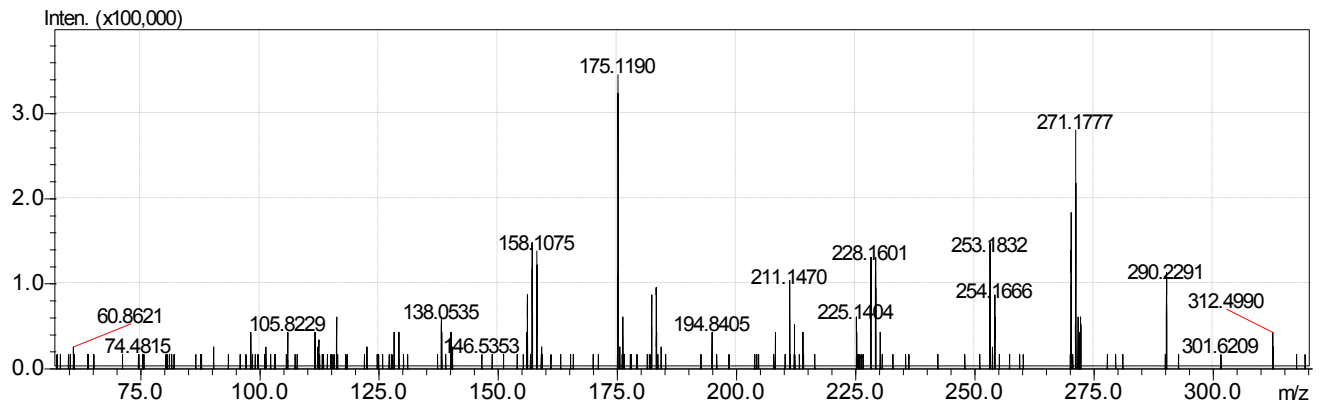
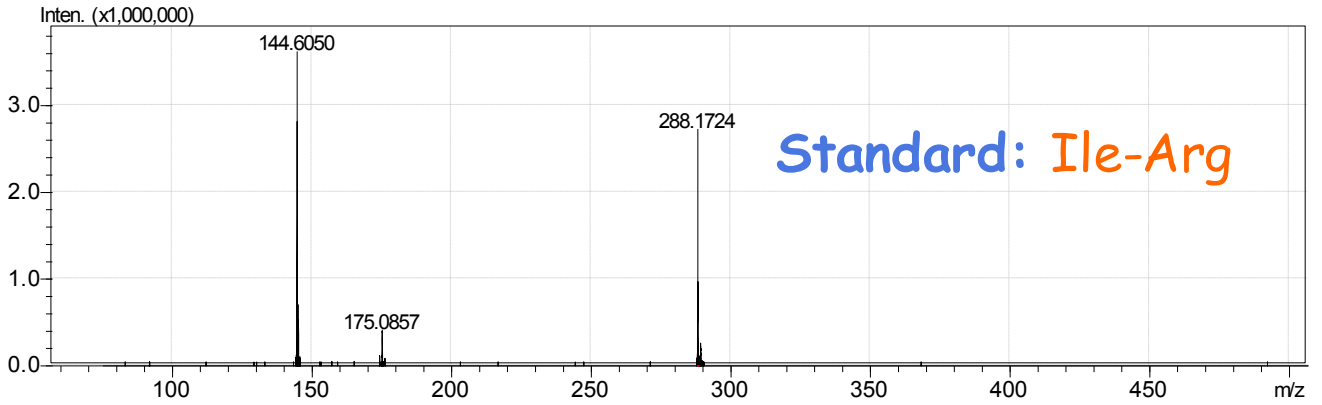


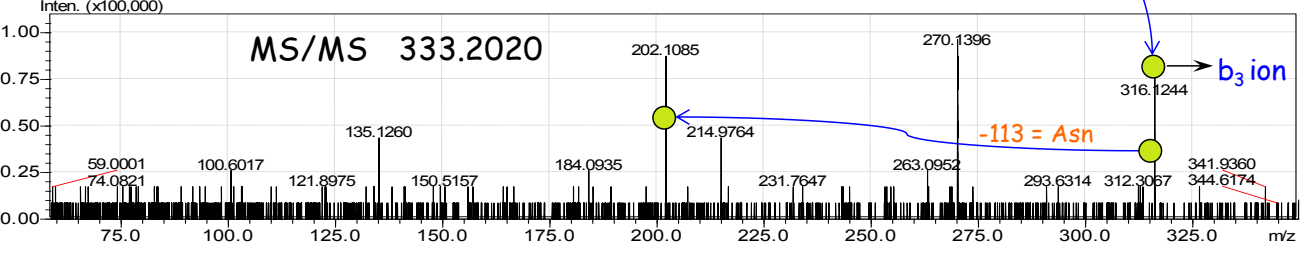
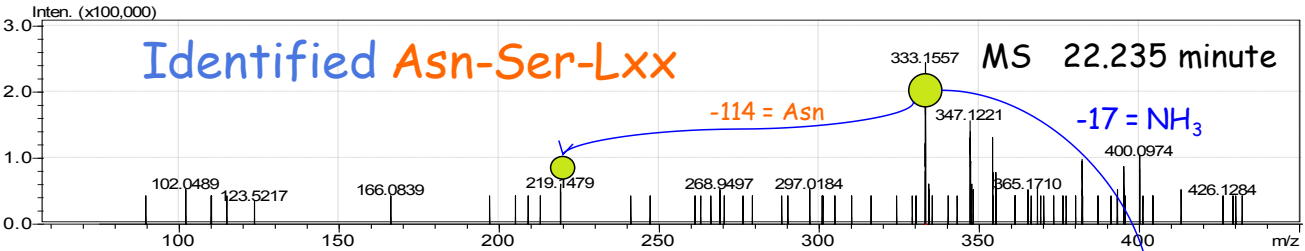
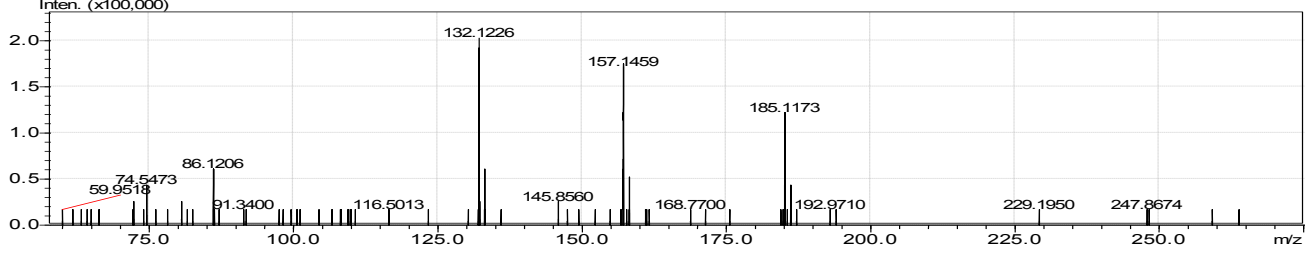
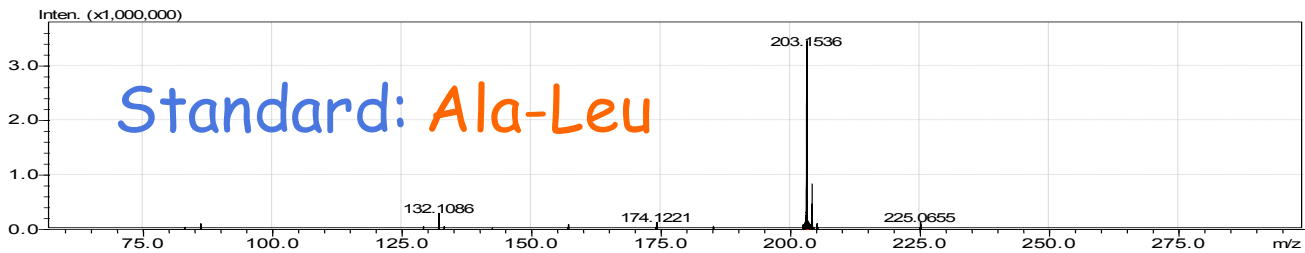
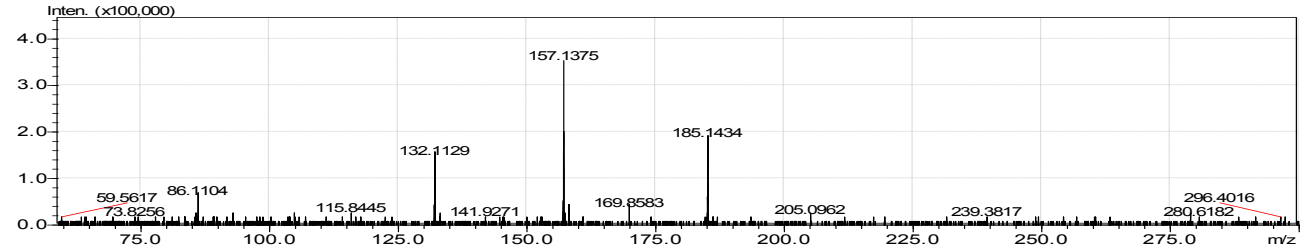
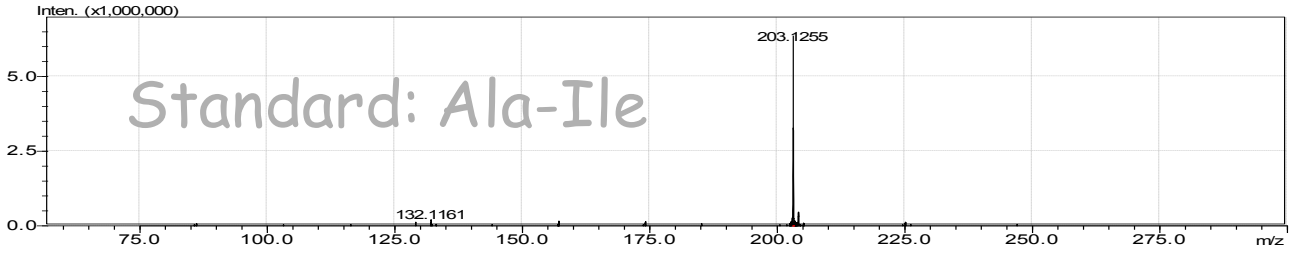
MS/MS 219.1266











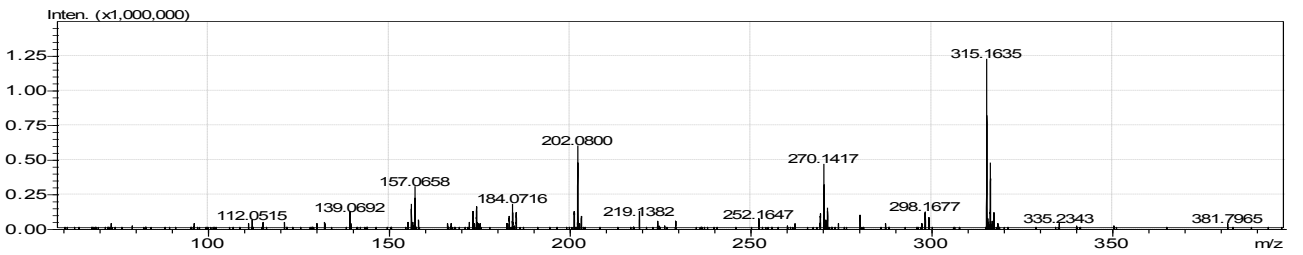
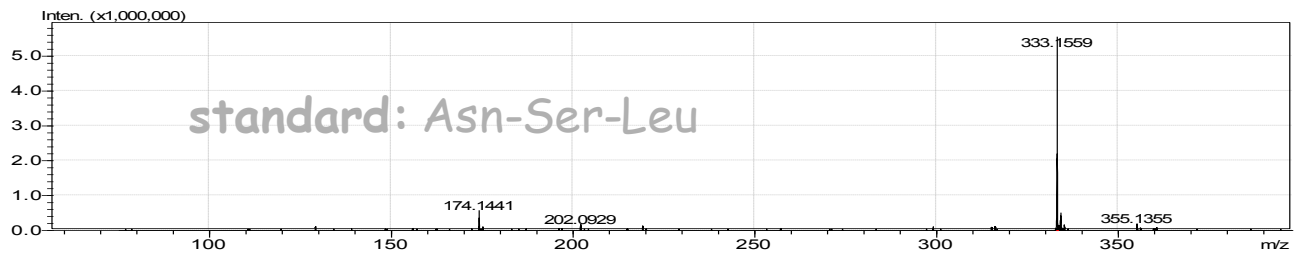
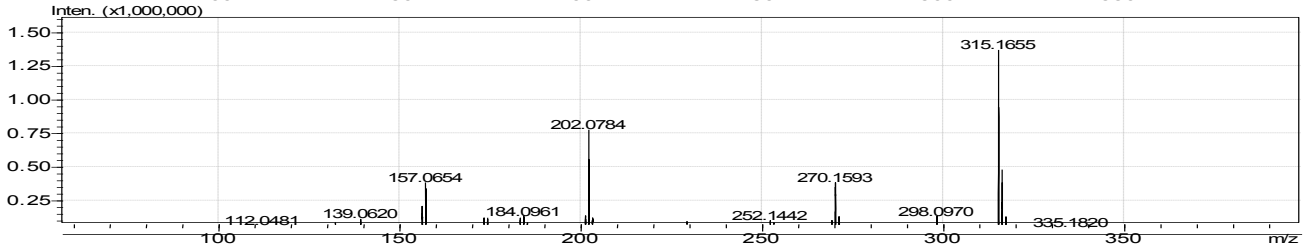
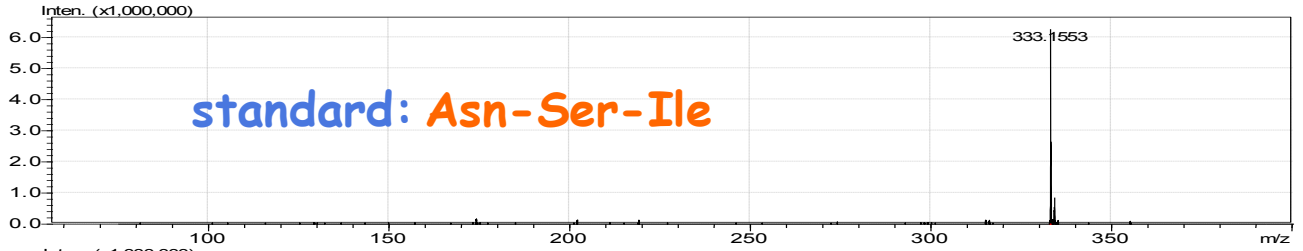


Table S1. Eleven fractions and their ACE inhibition rates.

No.	Samples	Code	Sample Final Concentration (100 µg/mL)				
			ACE Inhibition Rate (%)			Mean	Std.
1	Hot water extract	HWR	43.33	42.12	38.04	41.16	0.87
2	Auto-digested Reishi	ADR	66.10	67.79	67.91	67.27	1.01
	time (min)-amount (mg)						
1	5–13 (162.9)	ADR1	21.04	22.50	22.94	22.16	1.00
2	13–17.5 (48.7)	ADR2	70.14	72.05	70.59	70.93	1.00
3	17.5–18.5 (4.7)	ADR3	74.29	74.51	75.41	74.74	0.59
4	18.5–22 (14.4)	ADR4	76.31	76.98	77.20	76.83	0.47
5	22–29.5 (29.9)	ADR5	88.42	89.87	90.66	89.65	1.14
6	29.5–31.5 (6.45)	ADR6	77.54	78.33	78.89	78.25	0.68
7	31.5–33.5 (3.21)	ADR7	83.48	83.93	84.16	83.86	0.34
8	33.5–35 (1.8)	ADR8	86.29	86.73	87.18	86.73	0.45
9	35–37.5 (2.7)	ADR9	86.51	88.30	87.07	87.29	0.92
10	37.5–39 (1.2)	ADR10	86.85	86.73	87.07	86.88	0.17
11	39–60 (18.8)	ADR11	80.23	80.90	79.67	80.27	0.62

Table S2. Sub-fractions and their ACE inhibition rates.

No.	Time (min)–Amount (mg)	Code	Sample Final Concentration (100 µg/mL)				
			ACE Inhibition Rate (%)			Mean	Std.
1	6–22.5 (3.48)	ADR5-1	85.41	83.11	83.77	84.10	1.18
2	22.5–24 (2.63)	ADR5-2	66.94	67.52	69.40	67.95	1.29
3	24–34.2 (2.48)	ADR5-3	91.16	91.16	92.80	91.71	0.95
4	34.2–35.6 (0.61)	ADR5-4	86.64	86.32	88.70	87.22	1.29
5	35.6–41.5 (4.39)	ADR5-5	80.49	81.64	81.39	81.17	0.61
6	41.5–44.5 (1.67)	ADR5-6	81.55	80.41	79.91	80.62	0.84
7	44.5–65 (5.68)	ADR5-7	88.78	88.45	89.60	88.94	0.59