

Supplementary Materials

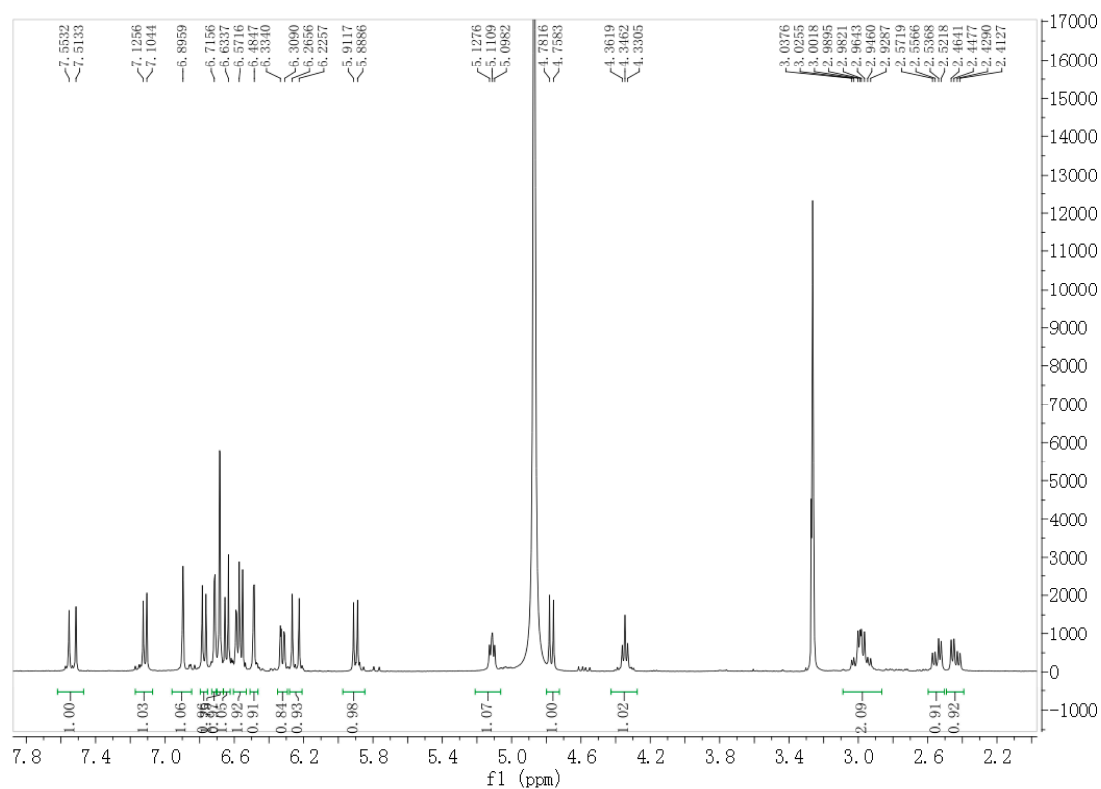


Figure S1. $^1\text{H-NMR}$ spectrum of salvianolic acid Y (TSL 1).

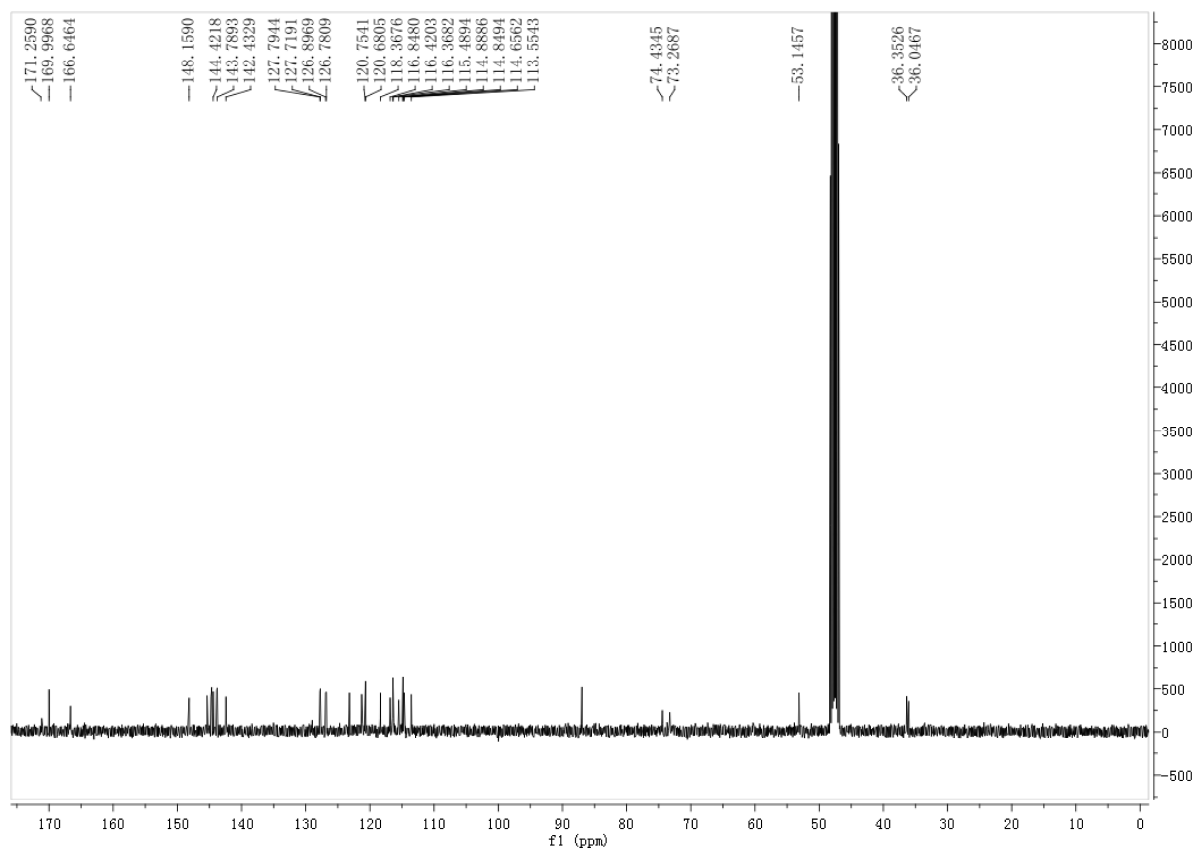


Figure S2. $^{13}\text{C-NMR}$ spectrum of salvianolic acid Y (TSL 1).

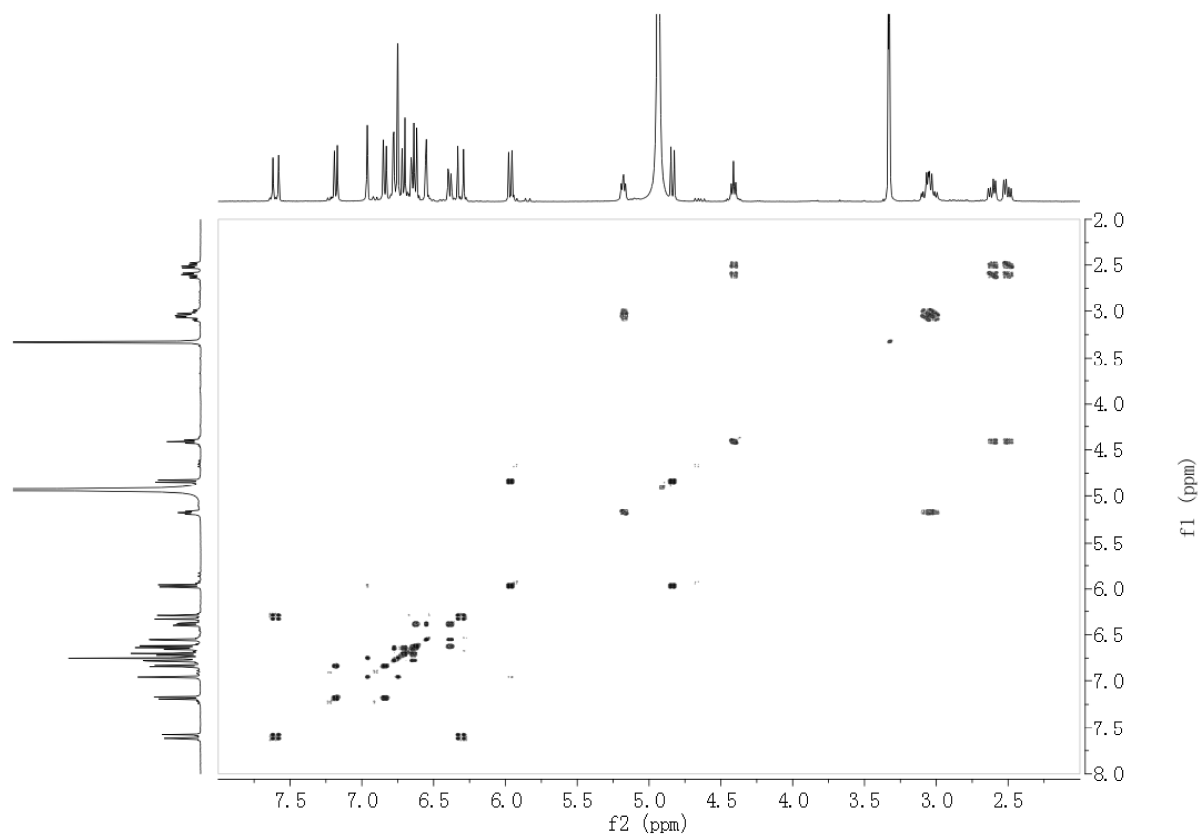


Figure S3. ^1H - ^1H COSY spectrum of salvianolic acid Y (TSL 1).

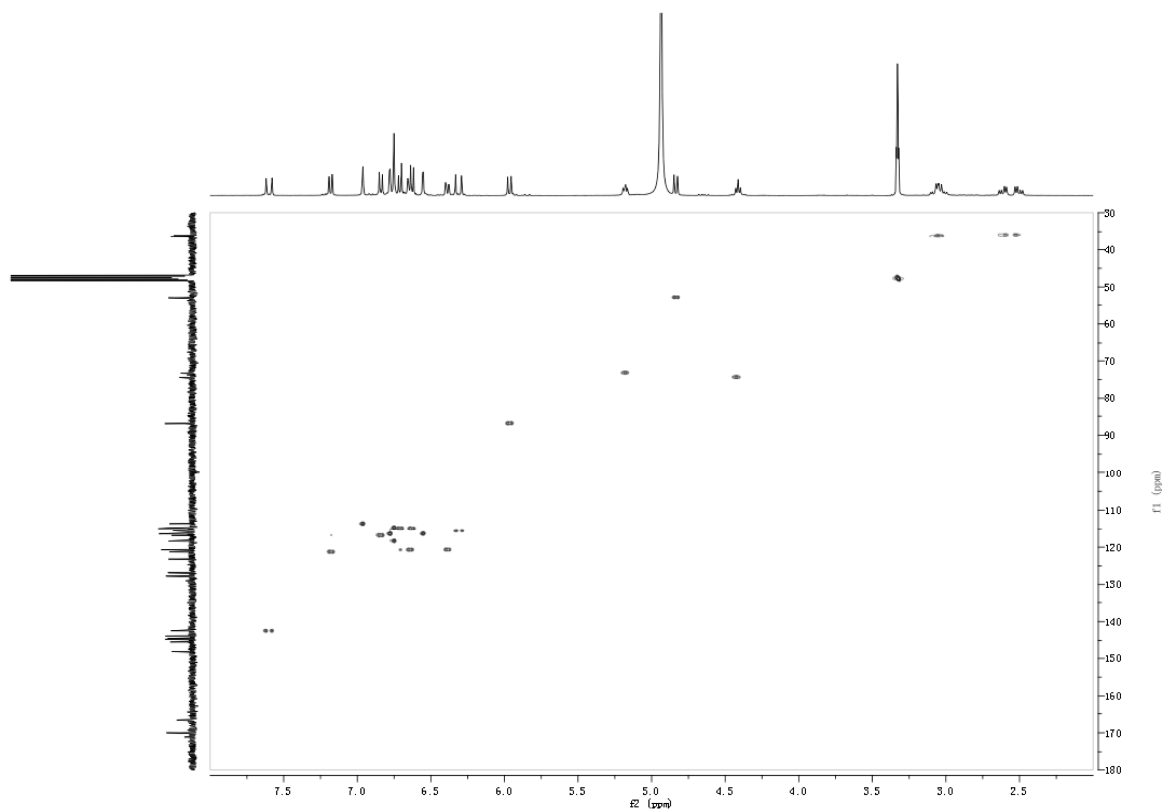


Figure S4. HMQC spectrum of salvianolic acid Y (TSL 1).

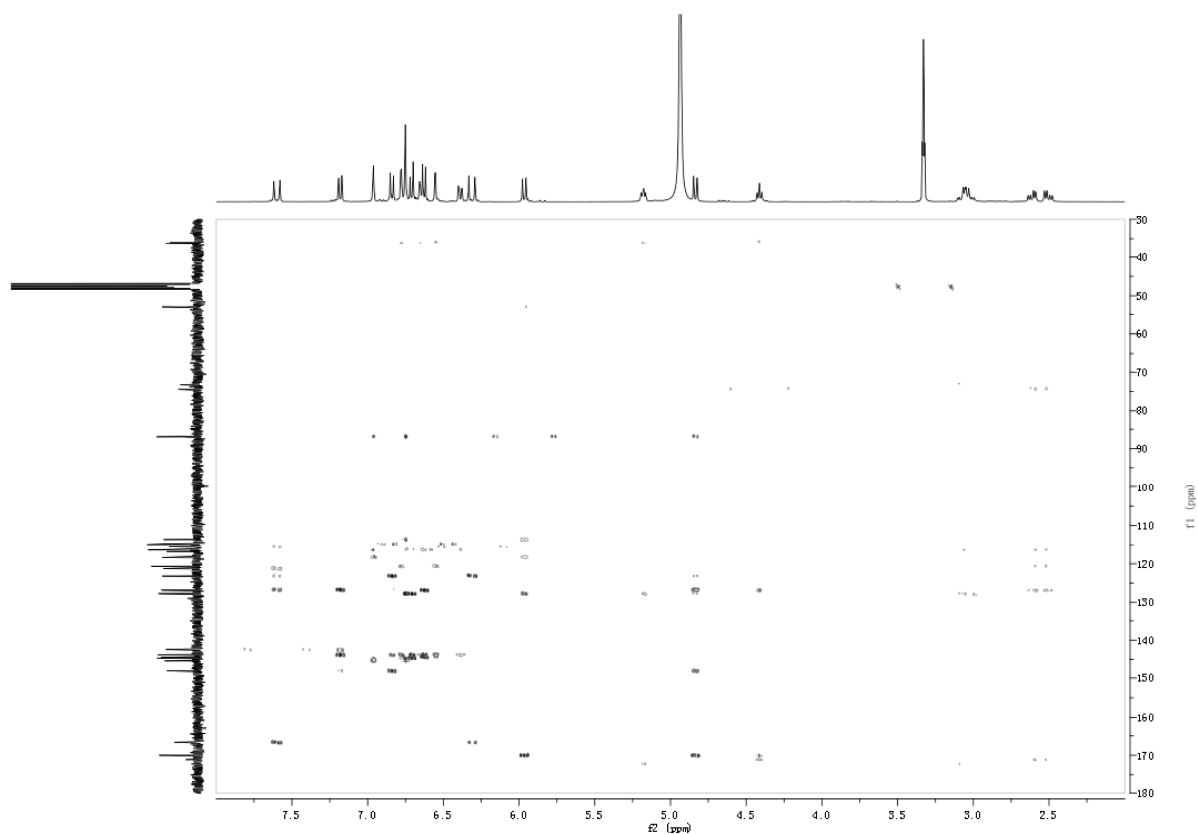


Figure S5. HMBC spectrum of salvianolic acid Y (TSL 1).

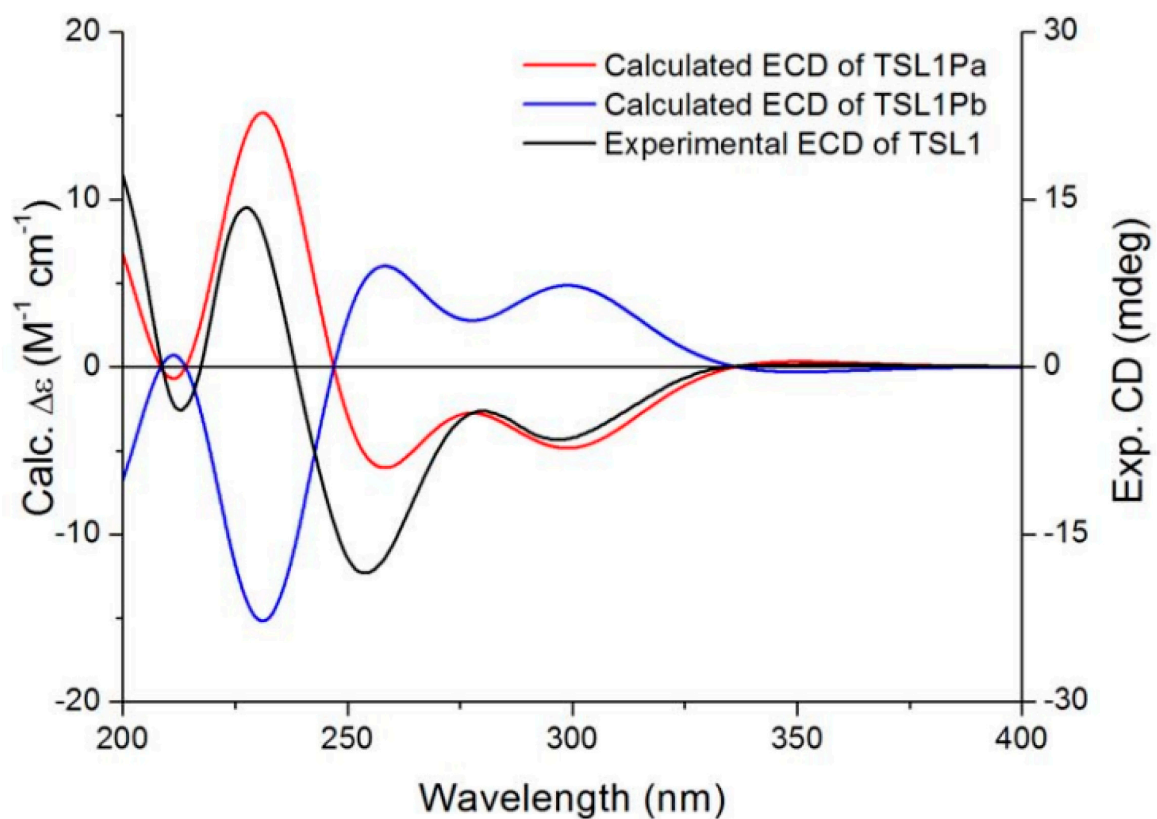


Figure S6. Experimental solution spectrum (black) of salvianolic acid Y (TSL 1) compared with the calculated ECD spectra of (2*R*,3*S*)-TSL 1*Pa* (red) and (2*S*,3*R*)-TSL 1*Pb* (blue).

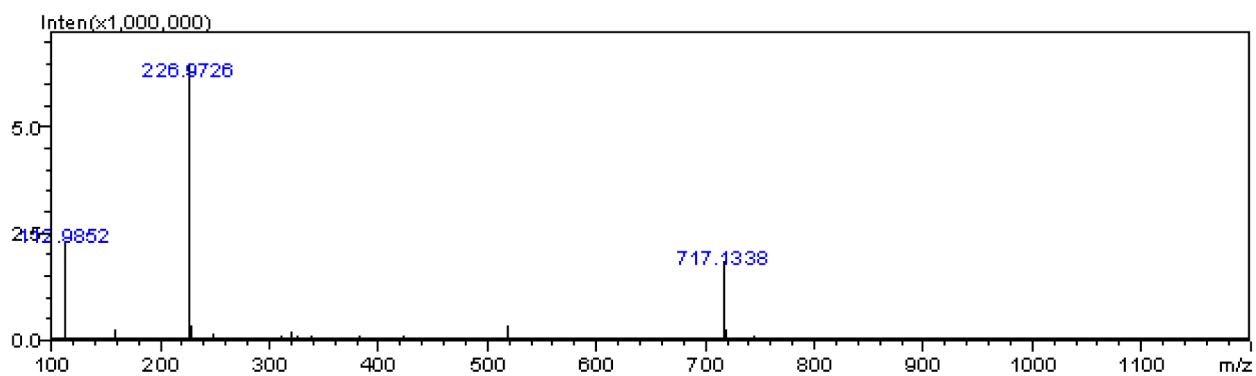


Figure S7. HR-ESI-MS spectrum of salvanolic acid Y (TSL 1).