

Supplementary Materials

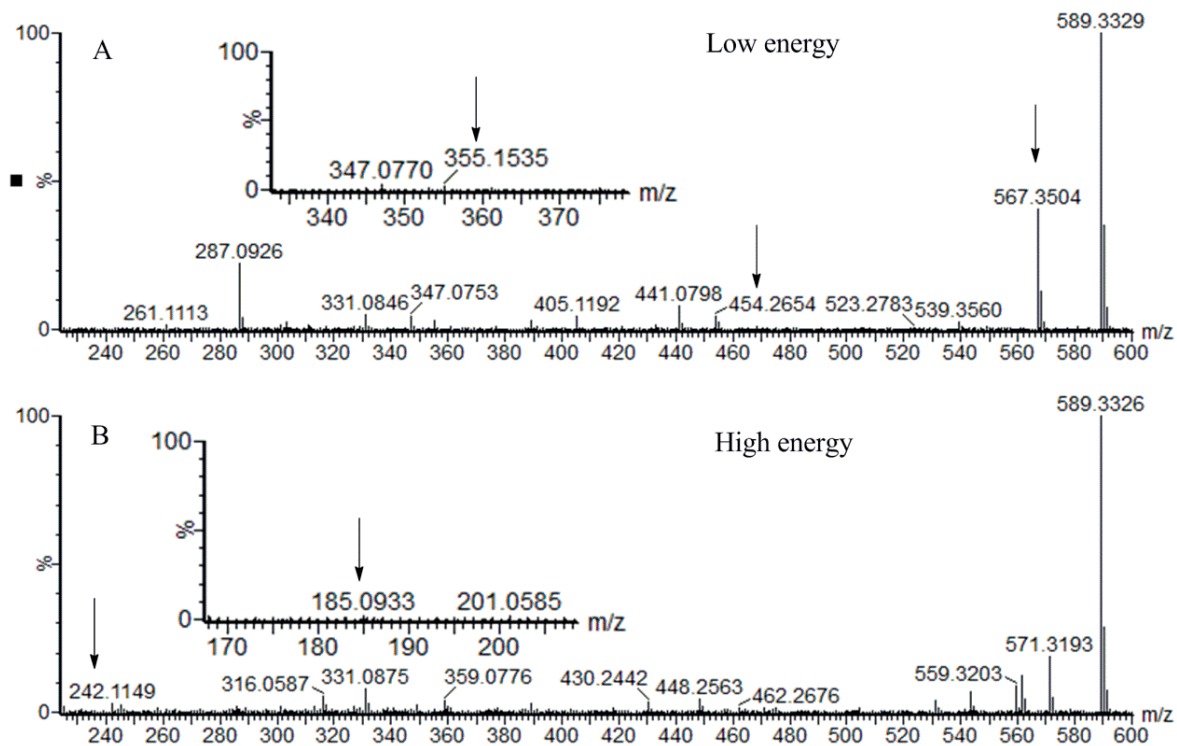


Figure S1. The low energy (A) and high energy (B) MS^E spectra of ion at m/z 589.3329 (19).

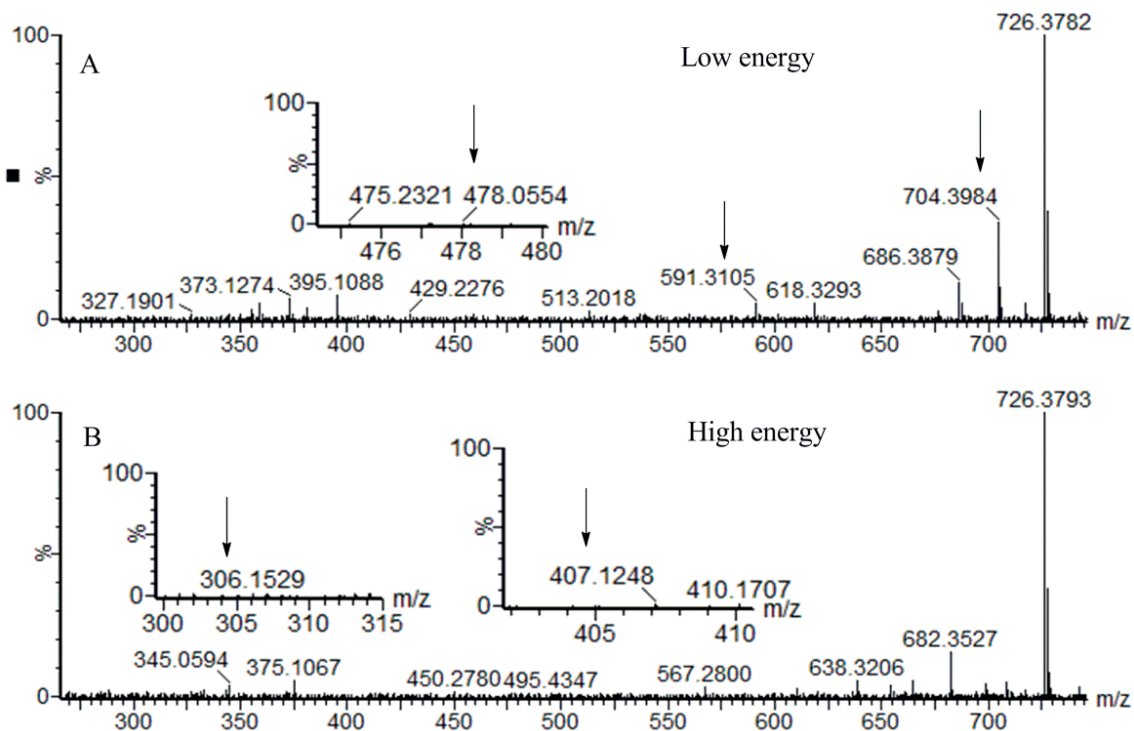


Figure S2. The low energy (A) and high energy (B) MS^E spectra of ion at m/z 726.3782 (26).

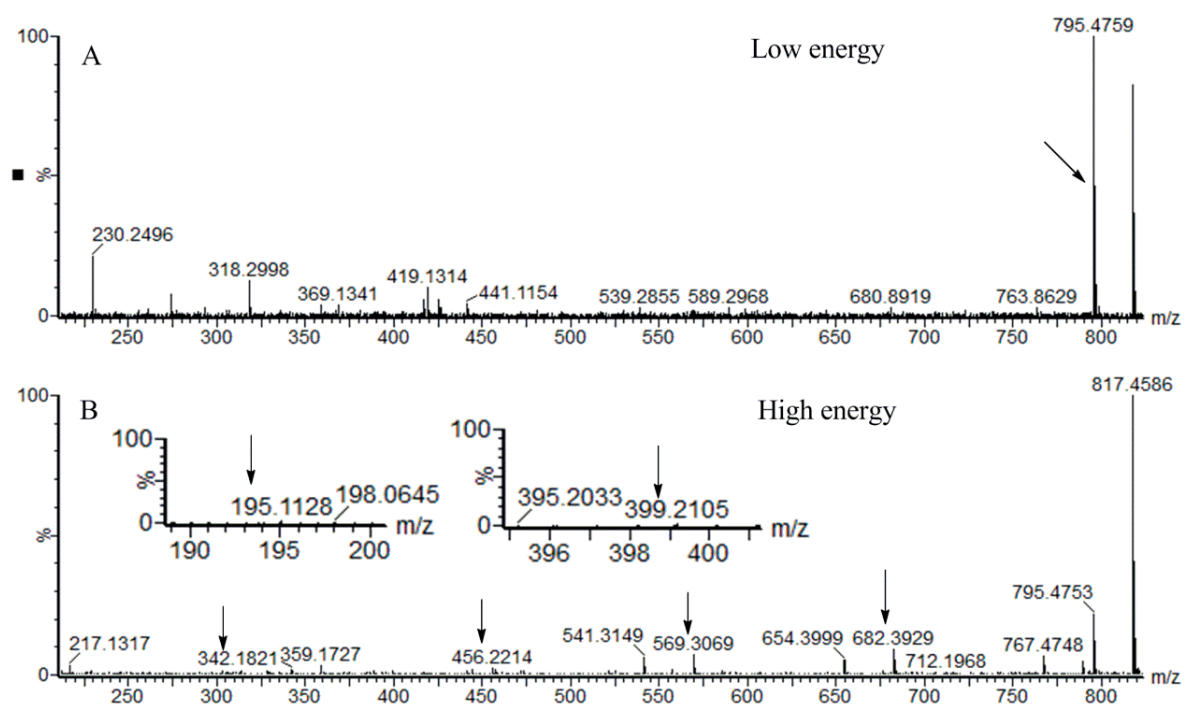


Figure S3. The low energy (A) and high energy (B) MS^E spectra of ion at *m/z* 817.4586 (**29**).