

Supplementary Materials

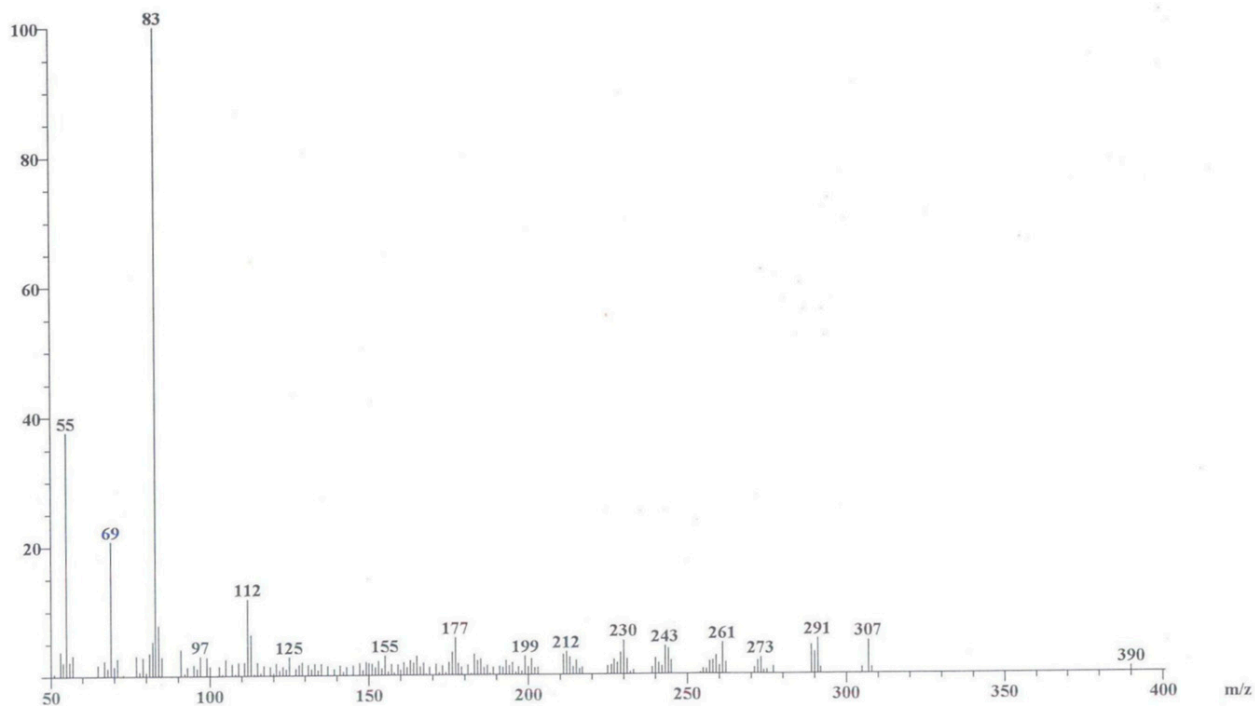


Figure S1. EIMS spectrum of compound 1.

File: 9441
Sample: sig-Q

Date Run: 12-24-2012
Ionization mode: EI+

Time Run: 15:22:40

Instrument: JEOL JMS600
Inlet: Direct Probe

R.T.: 1:14.05

Scan: 50-65
Base: m/z 343; 59.5%FS

TIC: 4544086

Selected Isotopes : $C_{0.50}H_{0.100}O_{0.10}$

Error Limit : 20 ppm

<u>Measured Mass</u>	<u>% Base</u>	<u>Formula</u>	<u>Calculated Mass</u>	<u>Error</u>
390.1685	0.2%	$C_{28}H_{22}O_2$	390.1620	-17.0
		$C_{21}H_{26}O_7$	390.1678	-1.7

Figure S2. HREIMS spectrum of compound 1.

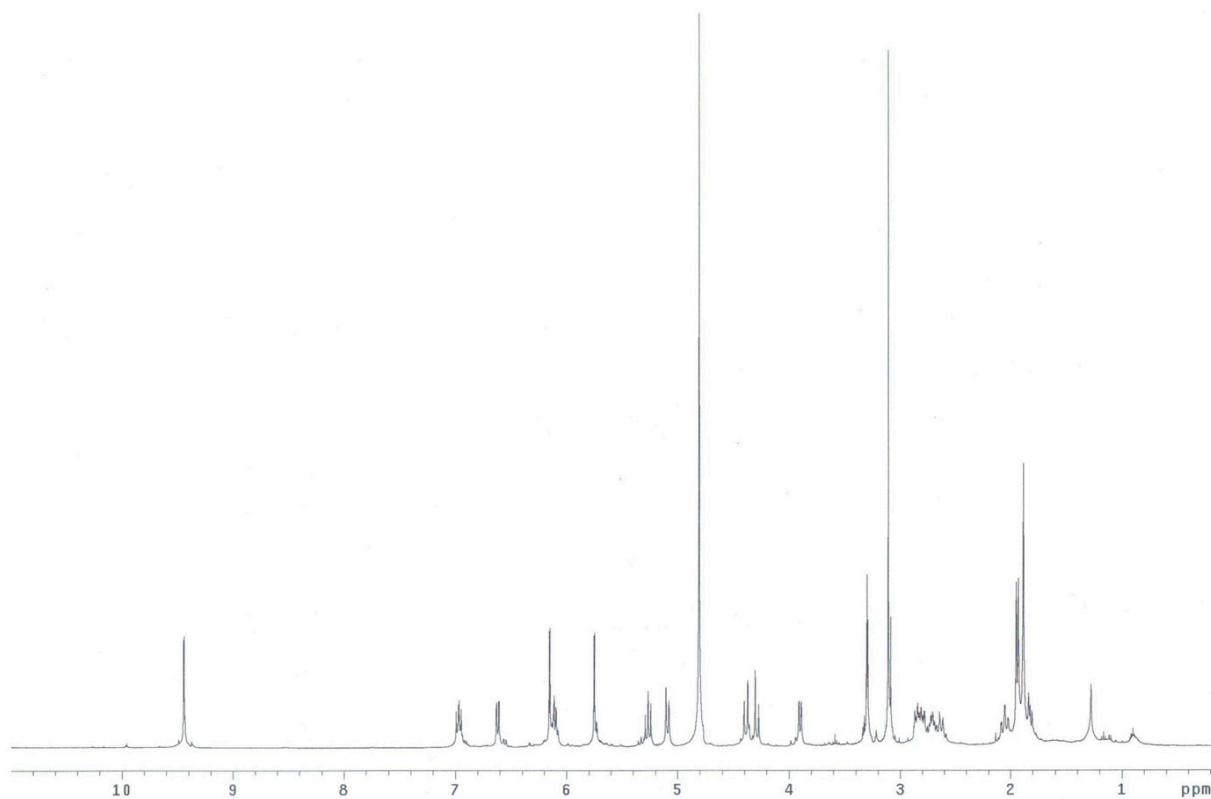


Figure S3. $^1\text{H-NMR}$ (400 MHz) spectrum of compound **1** in CD_3OD .

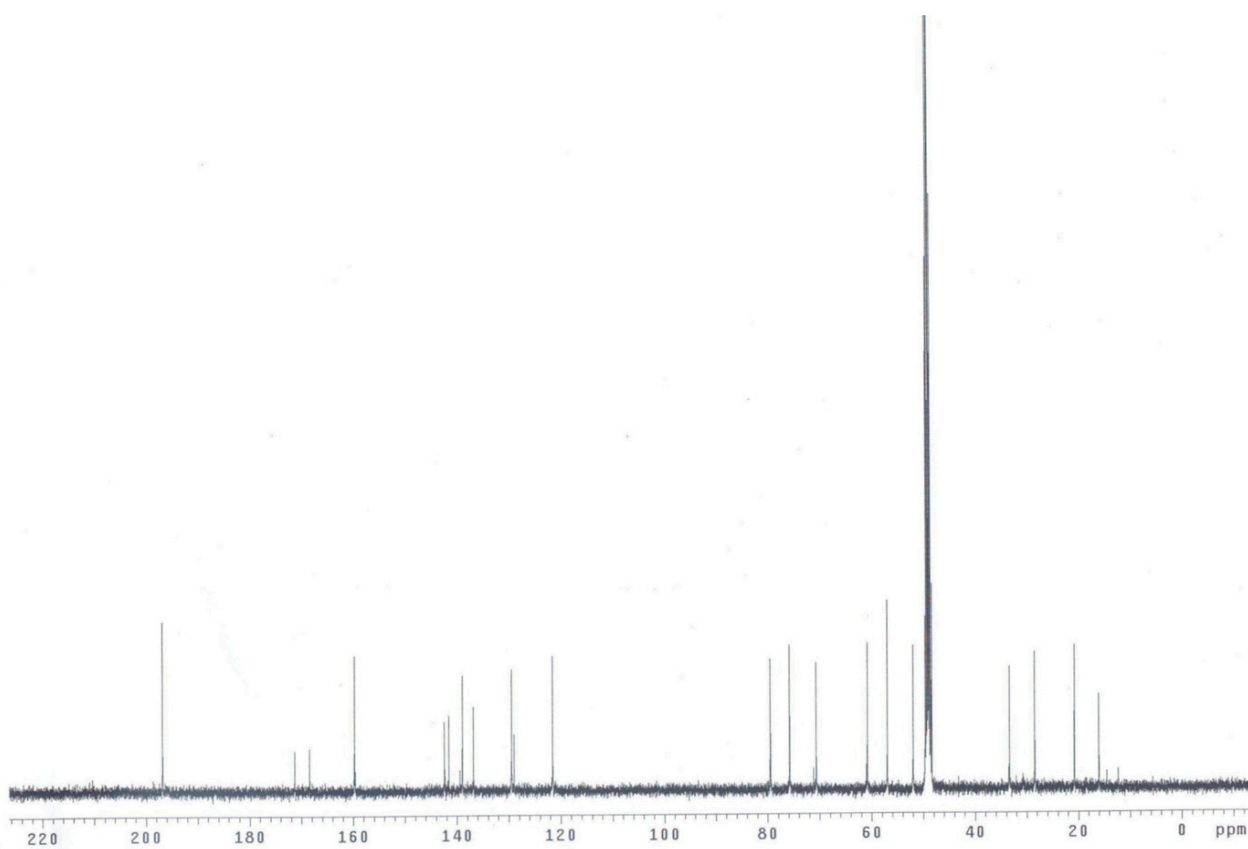


Figure S4. $^{13}\text{C-NMR}$ (100 MHz) spectrum of compound **1** in CD_3OD .

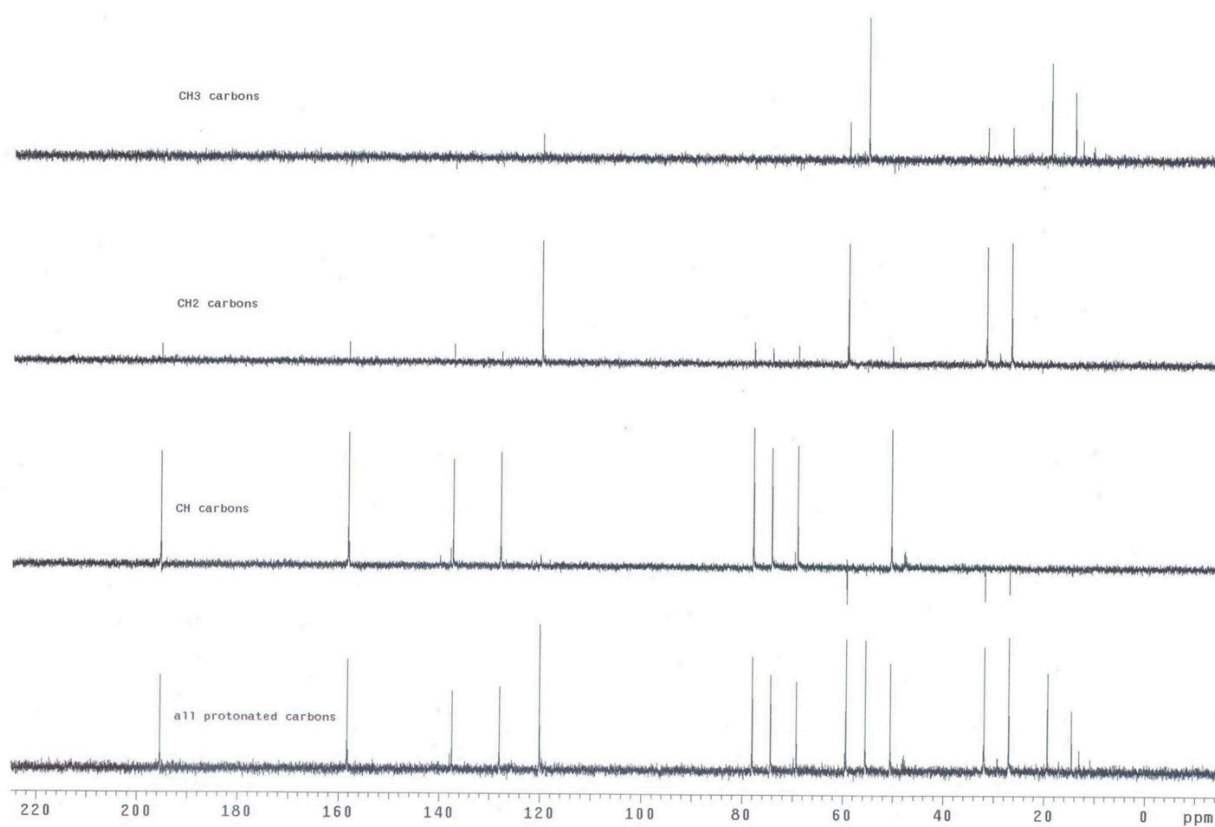


Figure S5. DEPT spectrum of compound 1 in CD₃OD.

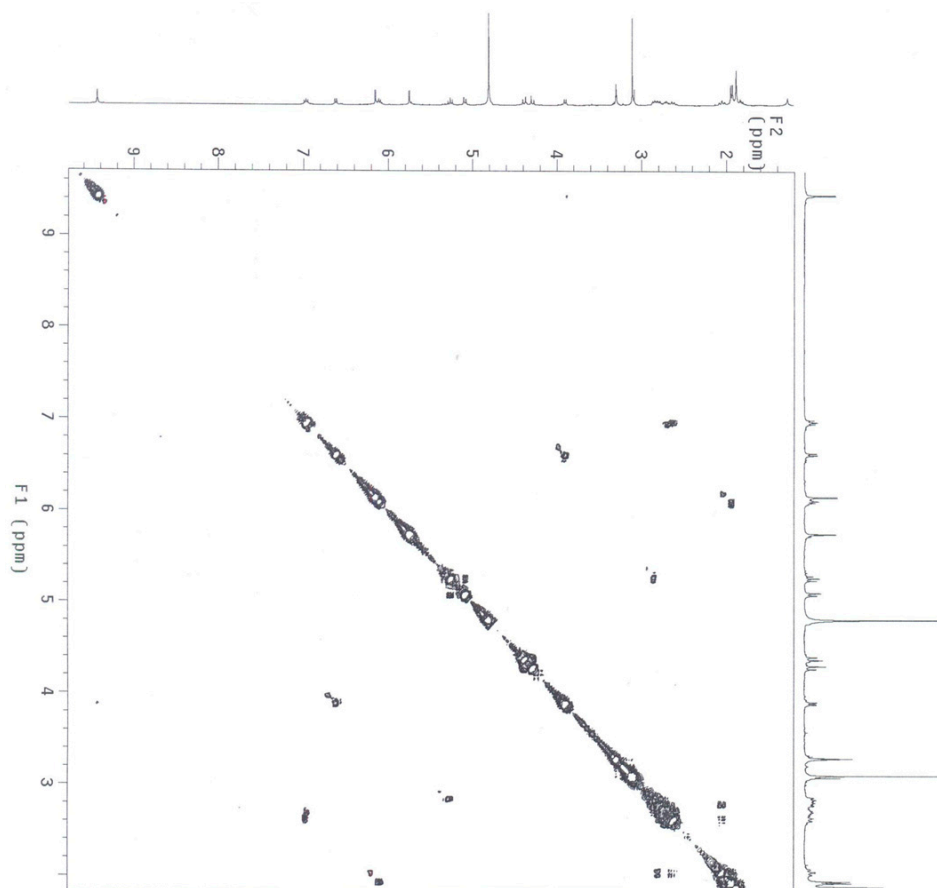


Figure S6. ¹H-¹H COSY spectrum of compound 1 in CD₃OD.

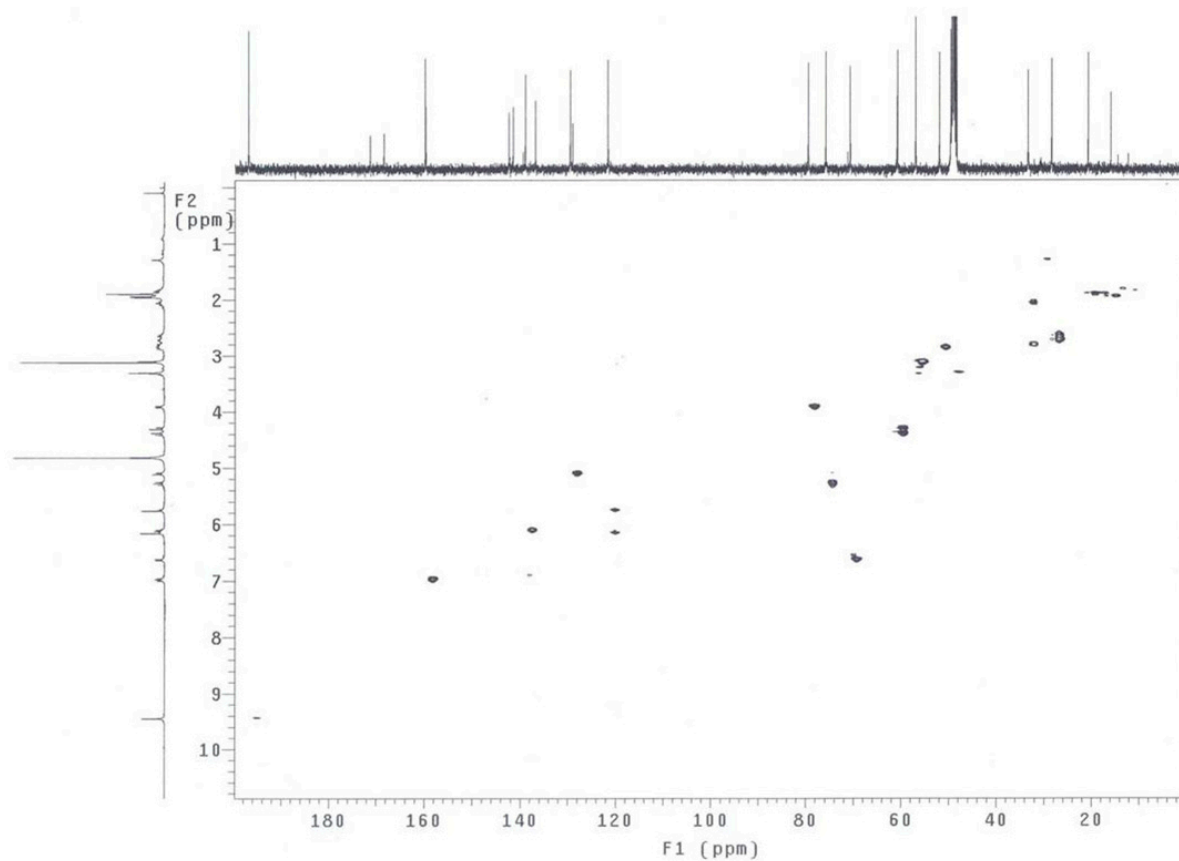


Figure S7. HSQC spectrum of compound **1** in CD₃OD.

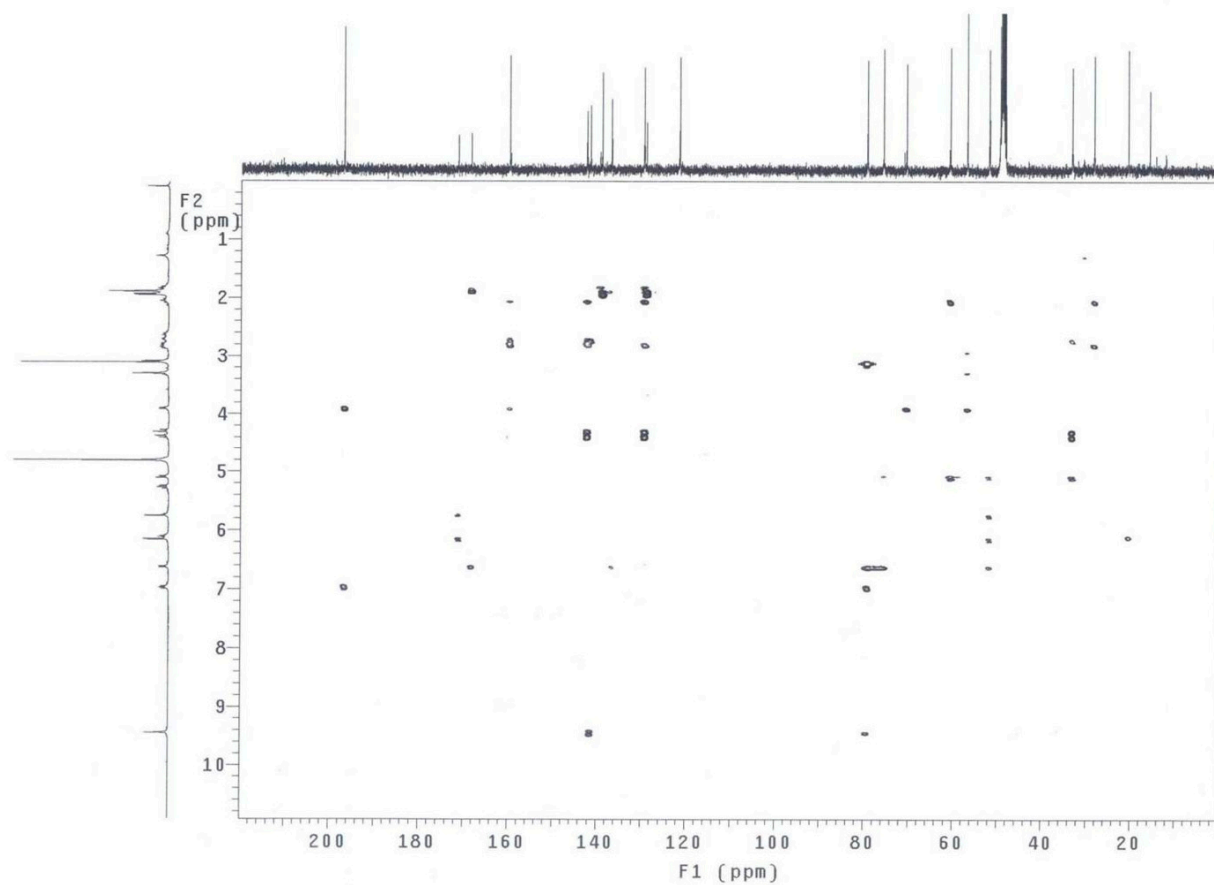


Figure S8. HMBC spectrum of compound **1** in CD₃OD.

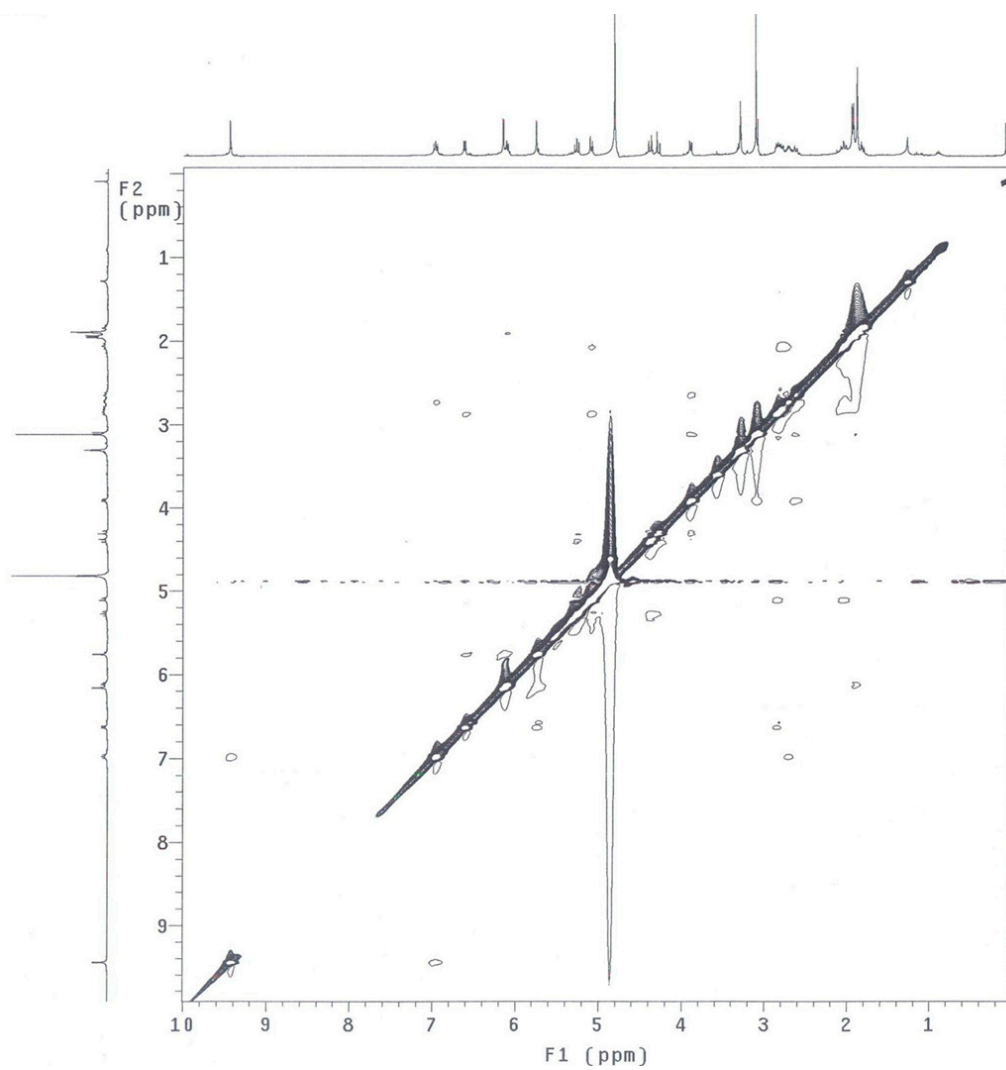


Figure S9. NOESY spectrum of compound **1** in CD₃OD.

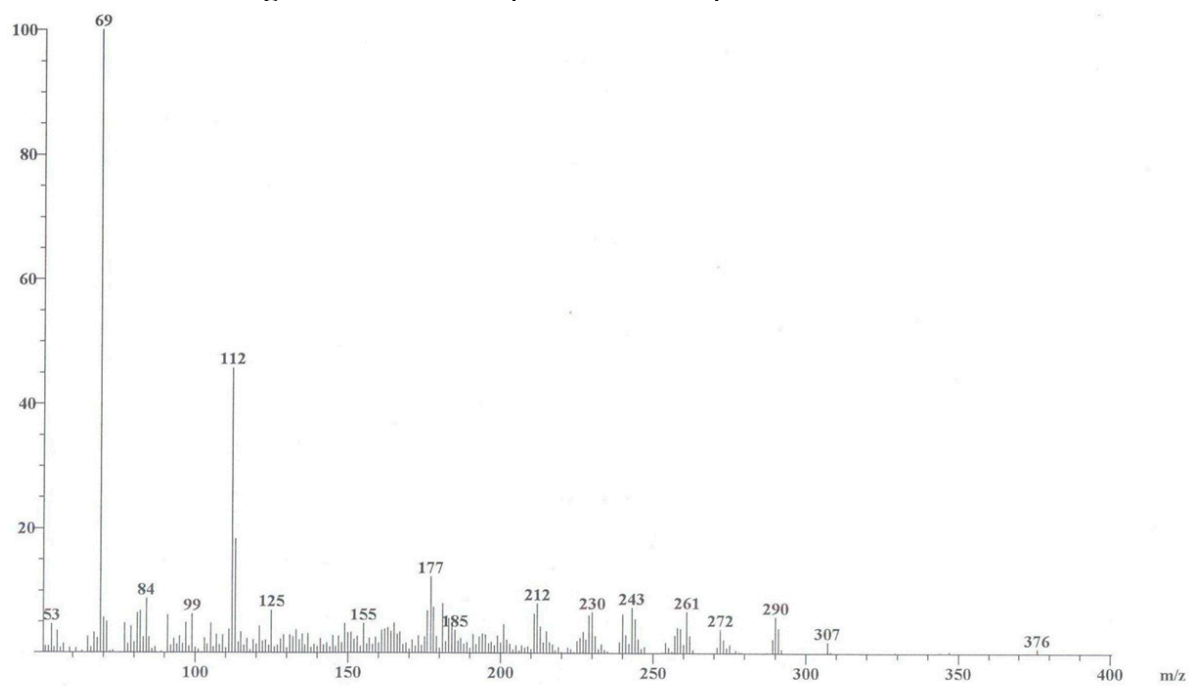


Figure S10. EIMS spectrum of compound **2**.

File: 9442
Sample: sig-L

Date Run: 12-24-2012
Ionization mode: EI+

Time Run: 15:50:18

Instrument: JEOL JMS600
Inlet: Direct Probe

R.T.: 2:12.35

Scan: 85-120
Base: m/z 419; 5.6%FS

TIC: 1607109

Selected Isotopes : $C_{0.50}H_{0.100}O_{0.10}$

Error Limit : 20 ppm

<u>Measured Mass</u>	<u>% Base</u>	<u>Formula</u>	<u>Calculated Mass</u>	<u>Error</u>
376.1518	13.6%	$C_{27}H_{20}O_2$	376.1463	-15.0
		$C_{20}H_{24}O_7$	376.1522	1.1

Figure S11. HREIMS spectrum of compound **2**.

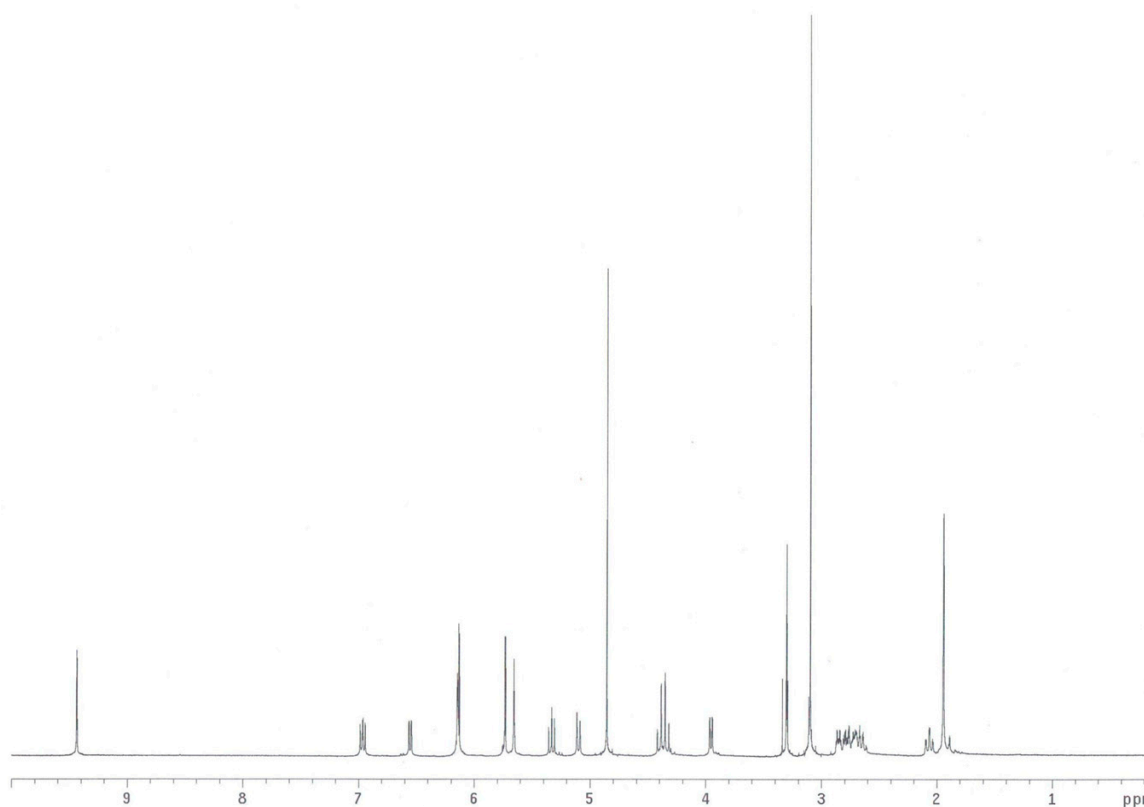


Figure S12. 1H -NMR (400 MHz) spectrum of compound **2** in CD_3OD .

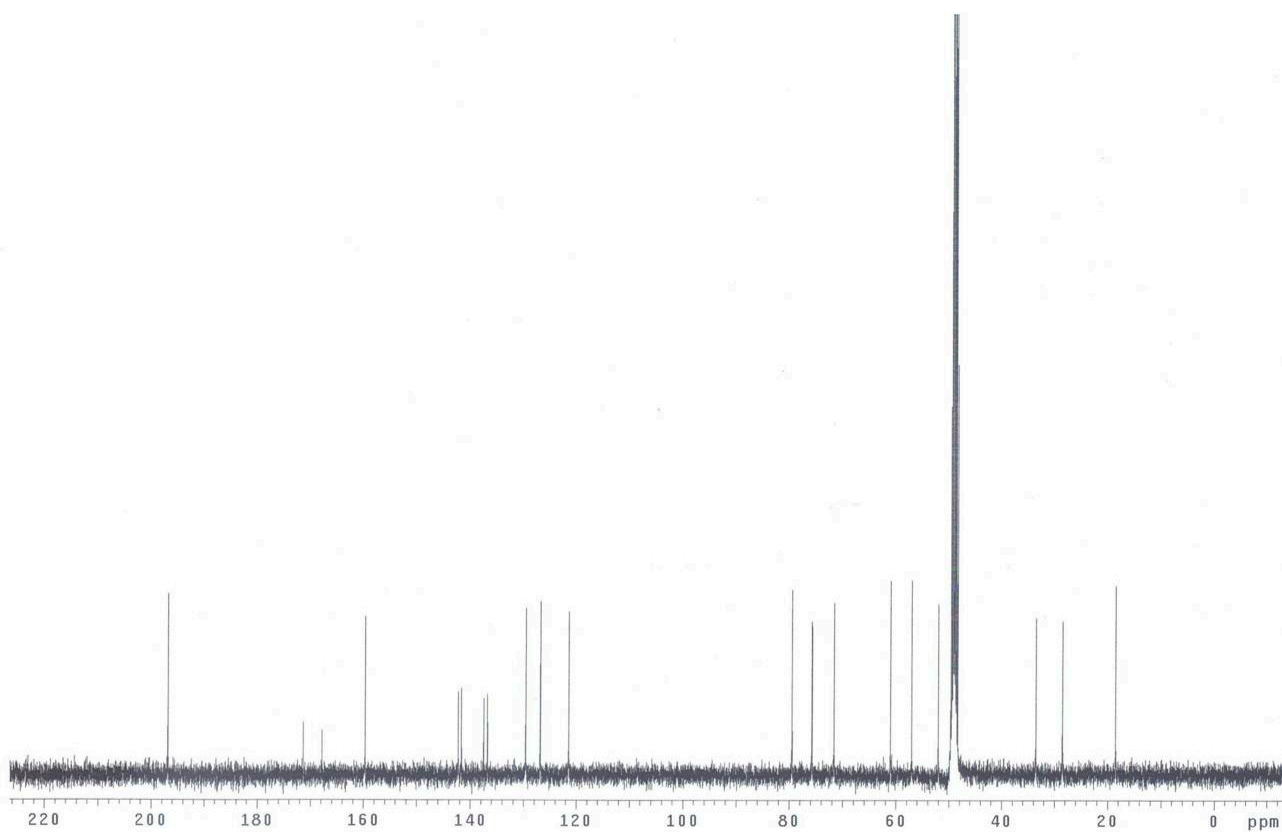


Figure S13. ^{13}C -NMR (100 MHz) spectrum of compound 2 in CD_3OD .

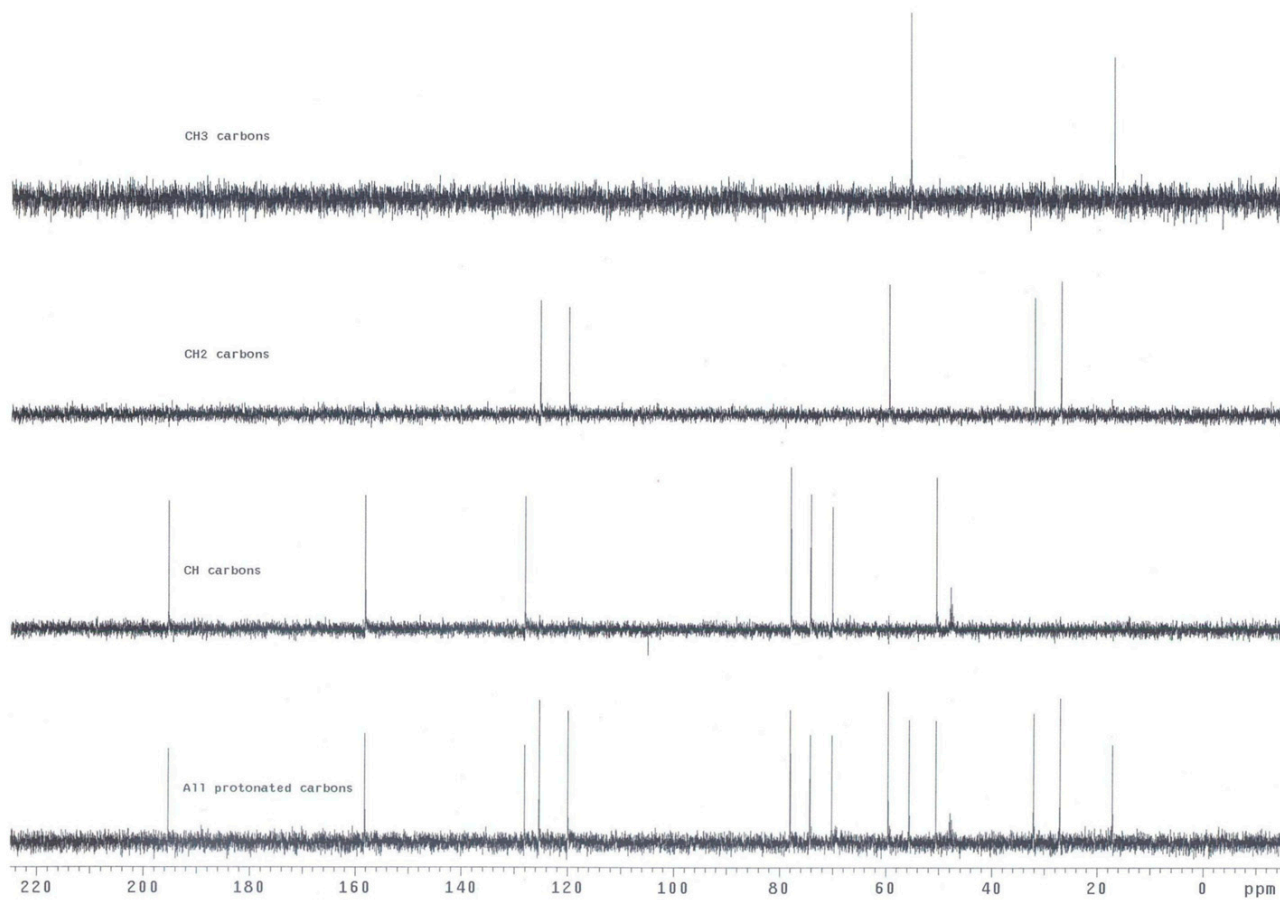


Figure S14. DEPT spectrum of compound 2 in CD_3OD .

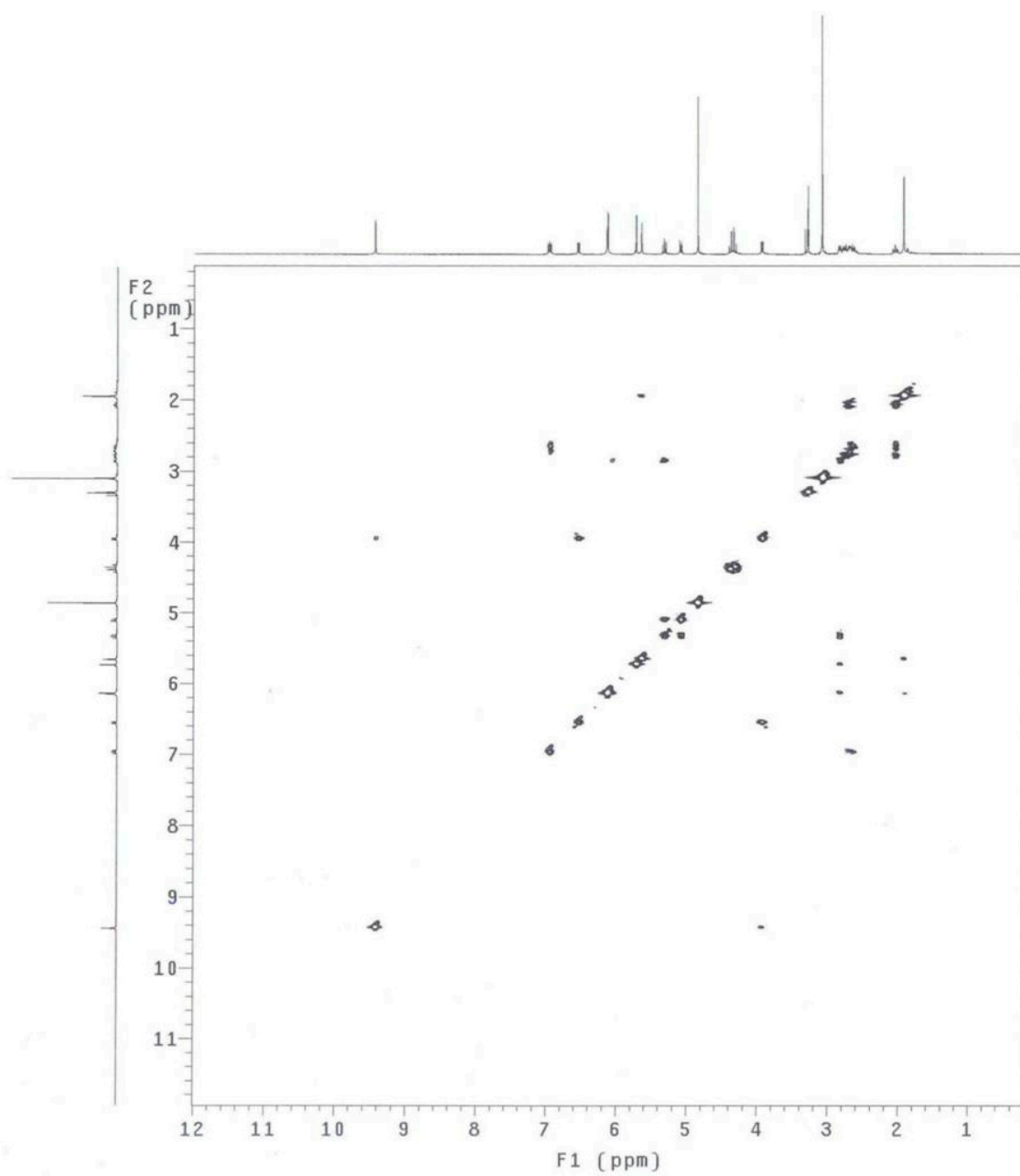


Figure S15. ^1H - ^1H COSY spectrum of compound **2** in CD_3OD .

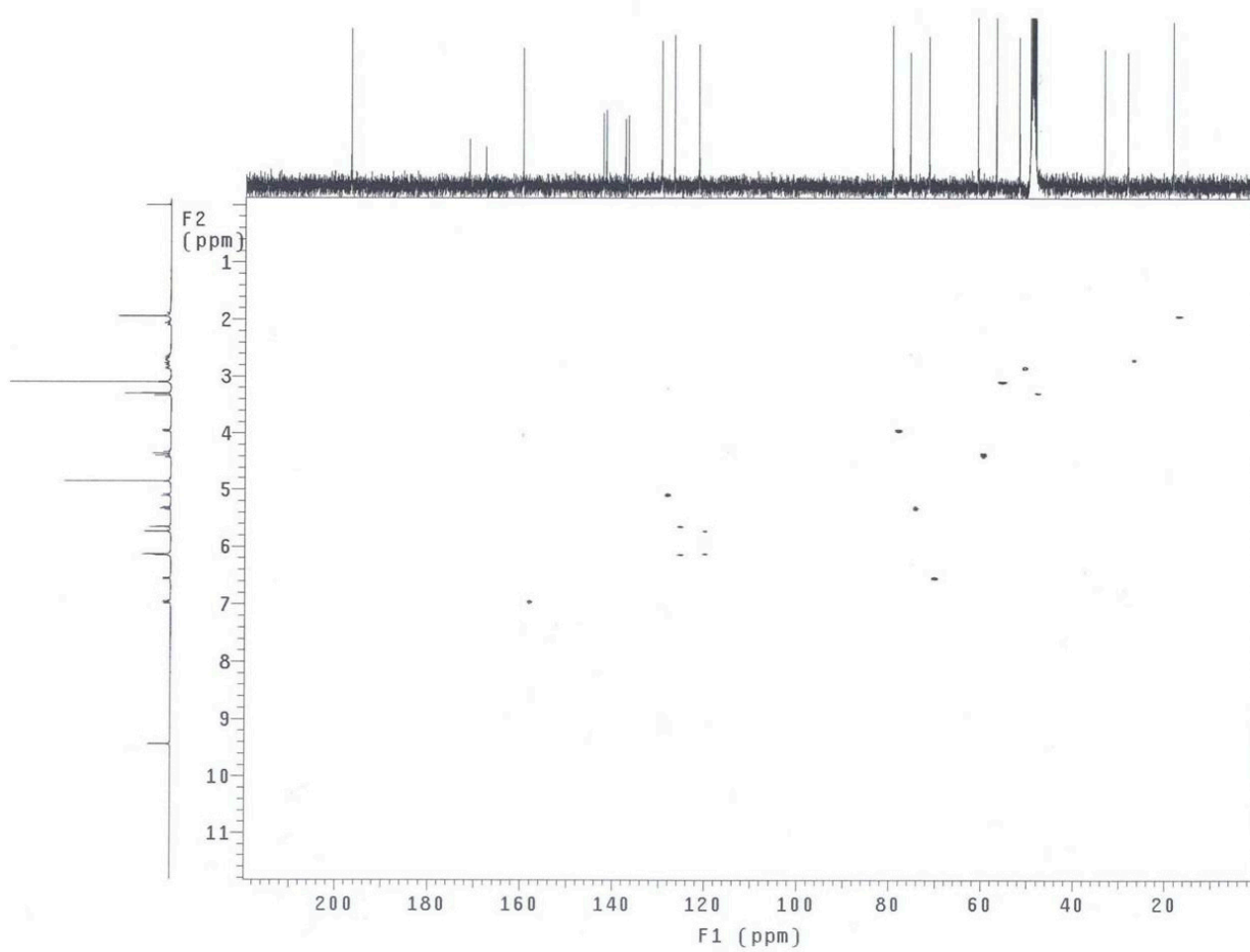


Figure S16. HSQC spectrum of compound **2** in CD_3OD .

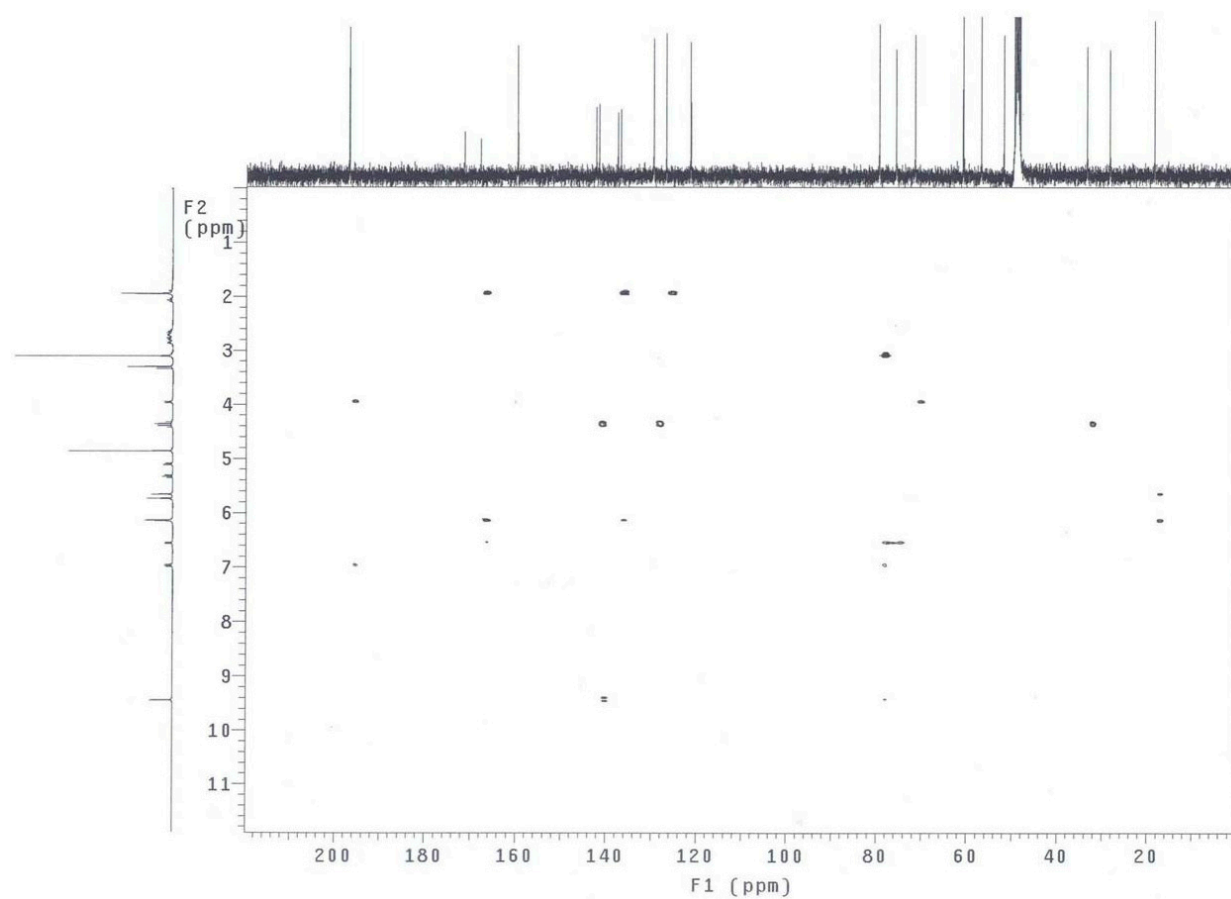


Figure S17. HMBC spectrum of compound **2** in CD₃OD.

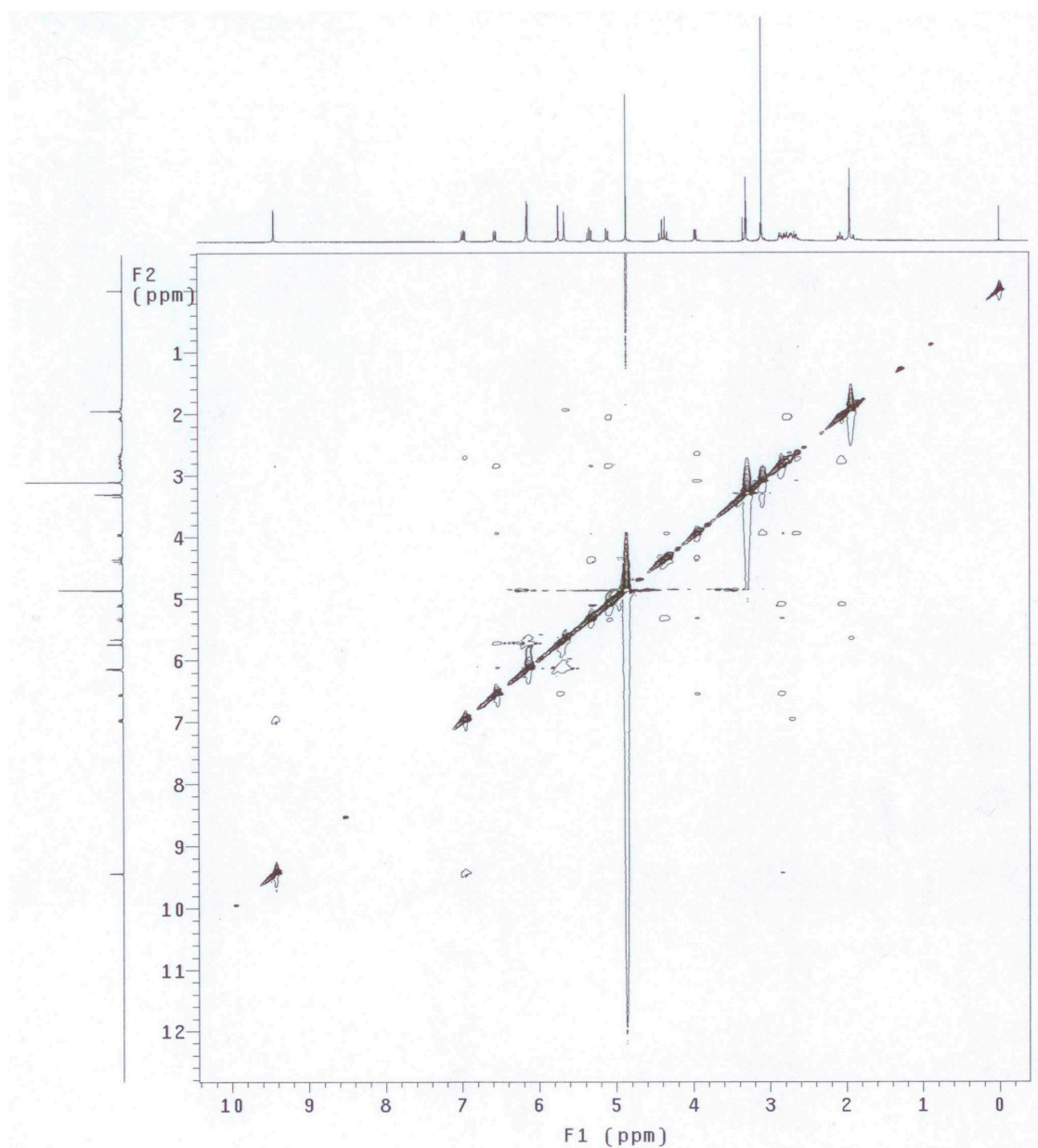


Figure S18. NOESY spectrum of compound **2** in CD₃OD.