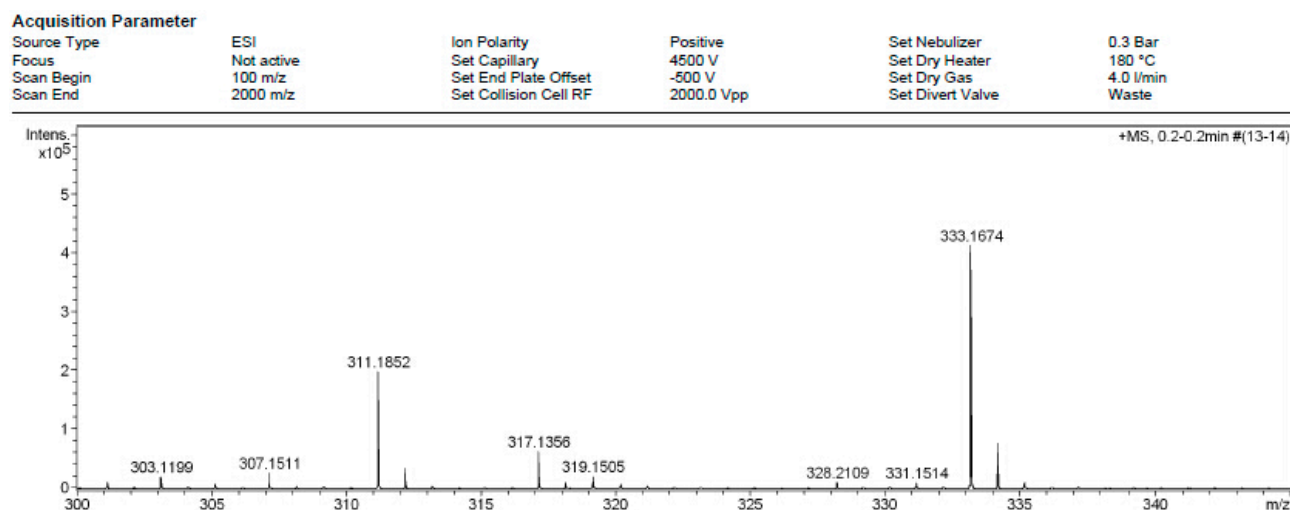


# Supporting Information of Compounds 1–3

Figure List:

- Figure S1.** HR-ESIMS of compound 1
- Figure S2.**  $^1\text{H}$ -NMR of compound 1
- Figure S3.**  $^{13}\text{C}$ -NMR of compound 1
- Figure S4.**  $^1\text{H}$ - $^1\text{H}$  COSY of compound 1
- Figure S5.** HSQC of compound 1
- Figure S6.** HMBC of compound 1
- Figure S7.** NOESY of compound 1
- Figure S8.** HR-ESIMS of compound 2
- Figure S9.**  $^1\text{H}$ -NMR of compound 2
- Figure S10.**  $^{13}\text{C}$ -NMR of compound 2
- Figure S11.**  $^1\text{H}$ - $^1\text{H}$  COSY of compound 2
- Figure S12.** HSQC of compound 2
- Figure S13.** HMBC of compound 2
- Figure S14.** NOESY of compound 2
- Figure S15.** HR-ESIMS of compound 3
- Figure S16.**  $^1\text{H}$ -NMR of compound 3
- Figure S17.**  $^{13}\text{C}$ -NMR of compound 3
- Figure S18.**  $^1\text{H}$ - $^1\text{H}$  COSY of compound 3
- Figure S19.** HSQC of compound 3
- Figure S20.** HMBC of compound 3
- Figure S21.** NOESY of compound 3



**Figure S1.** HR-ESIMS of compound 1.

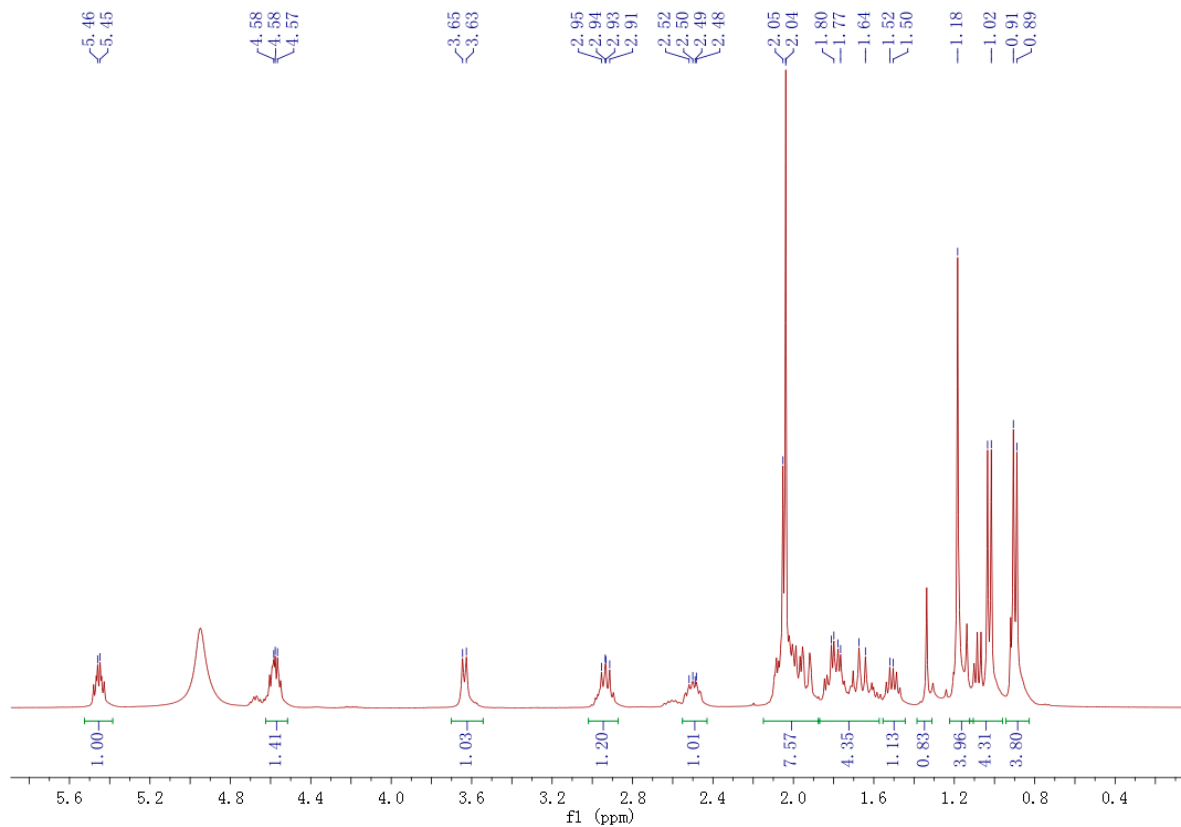


Figure S2.  $^1\text{H}$ -NMR of compound **1**.

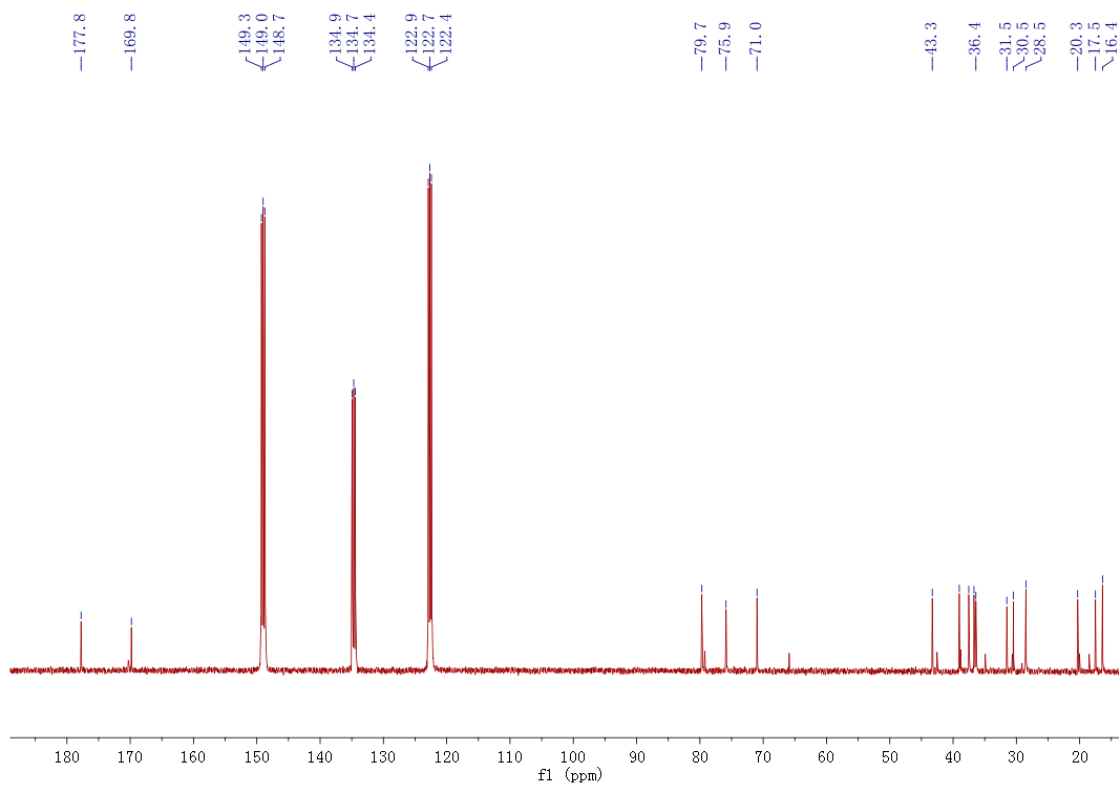
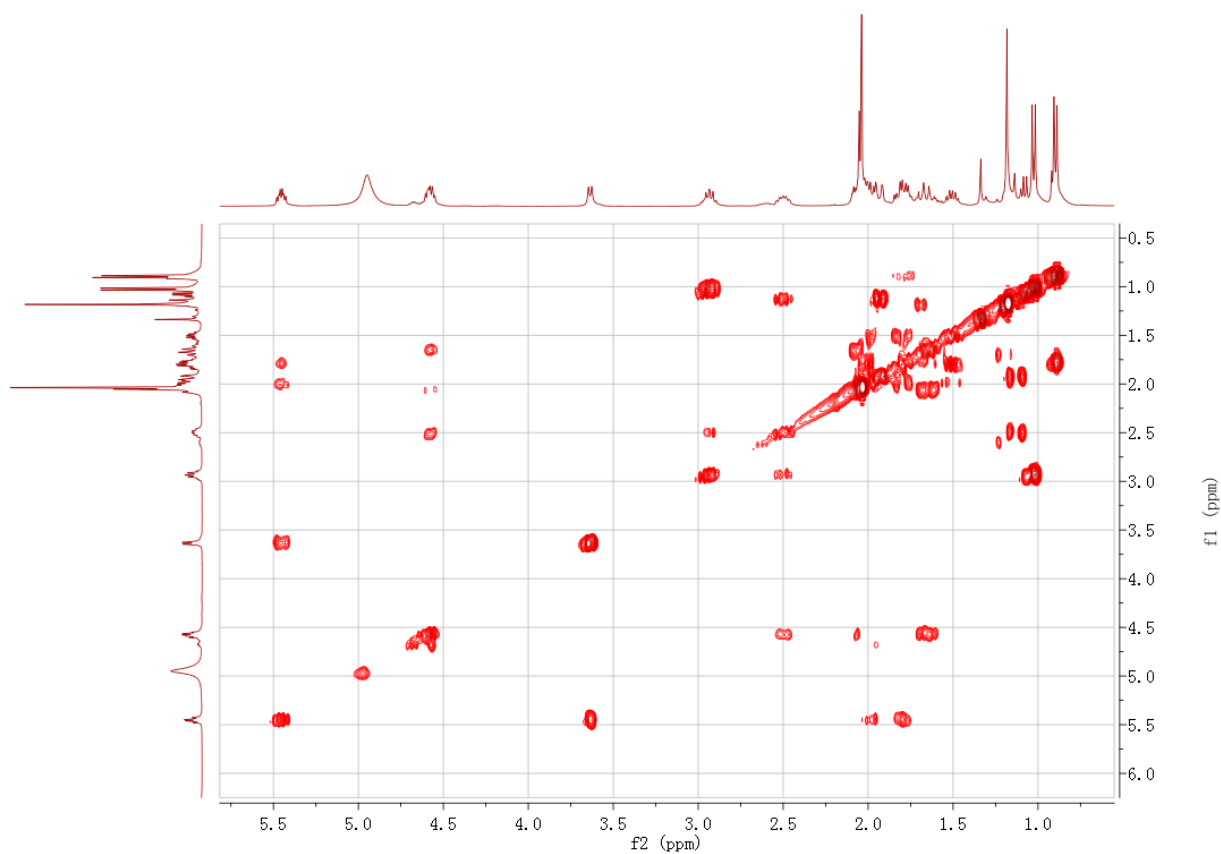
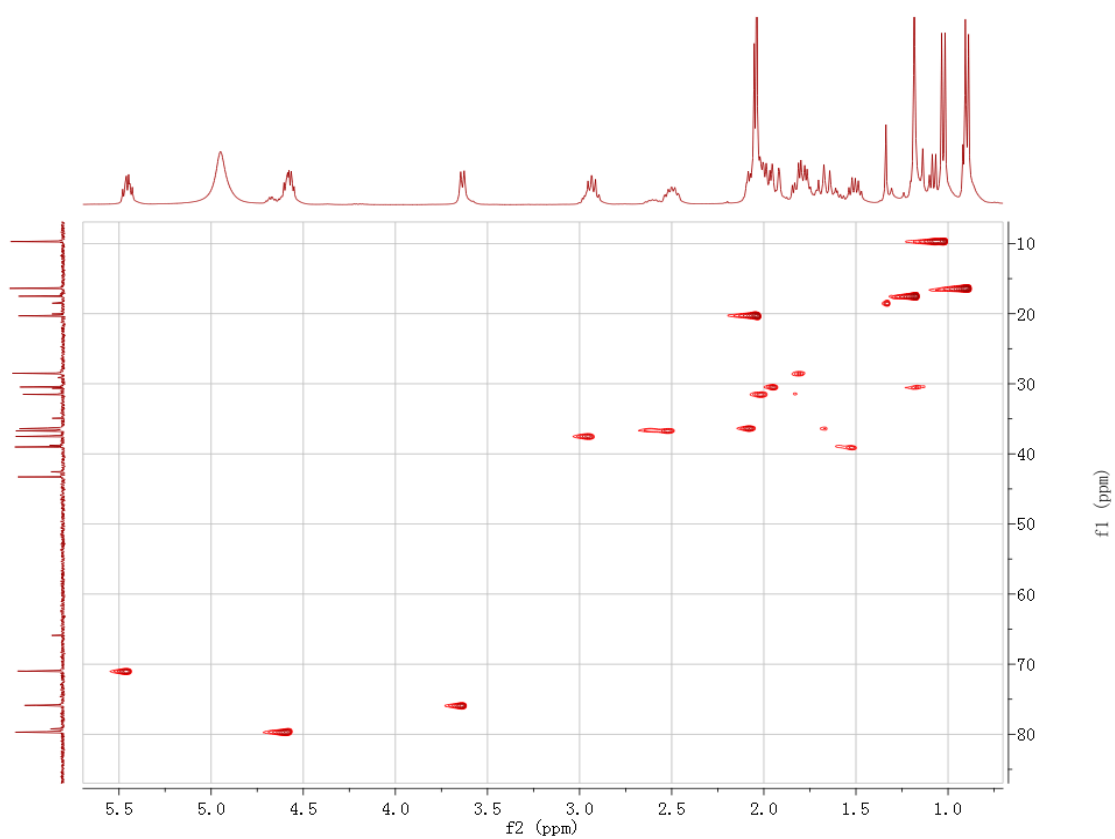


Figure S3.  $^{13}\text{C}$ -NMR of compound **1**.



**Figure S4.**  $^1\text{H}$ - $^1\text{H}$  COSY of compound 1.



**Figure S5.** HSQC of compound 1.

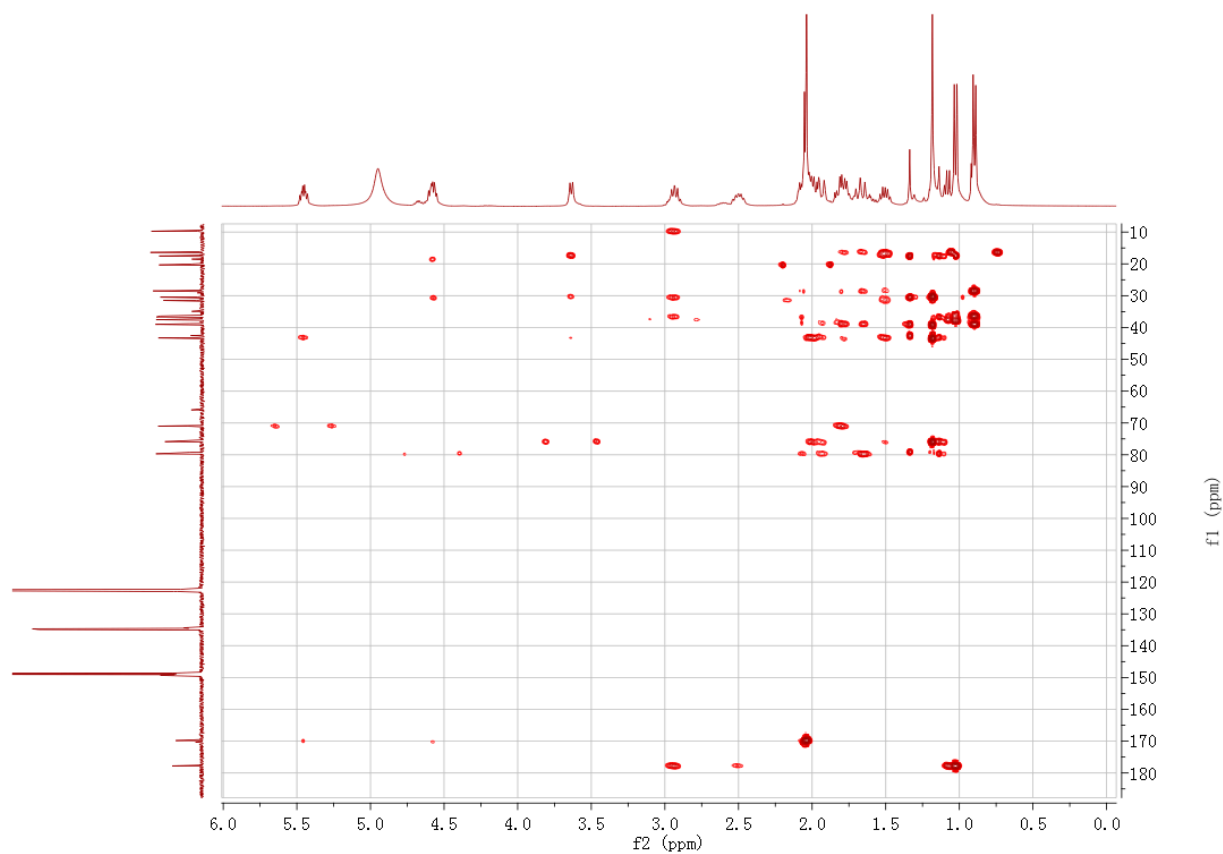


Figure S6. HMBC of compound 1.

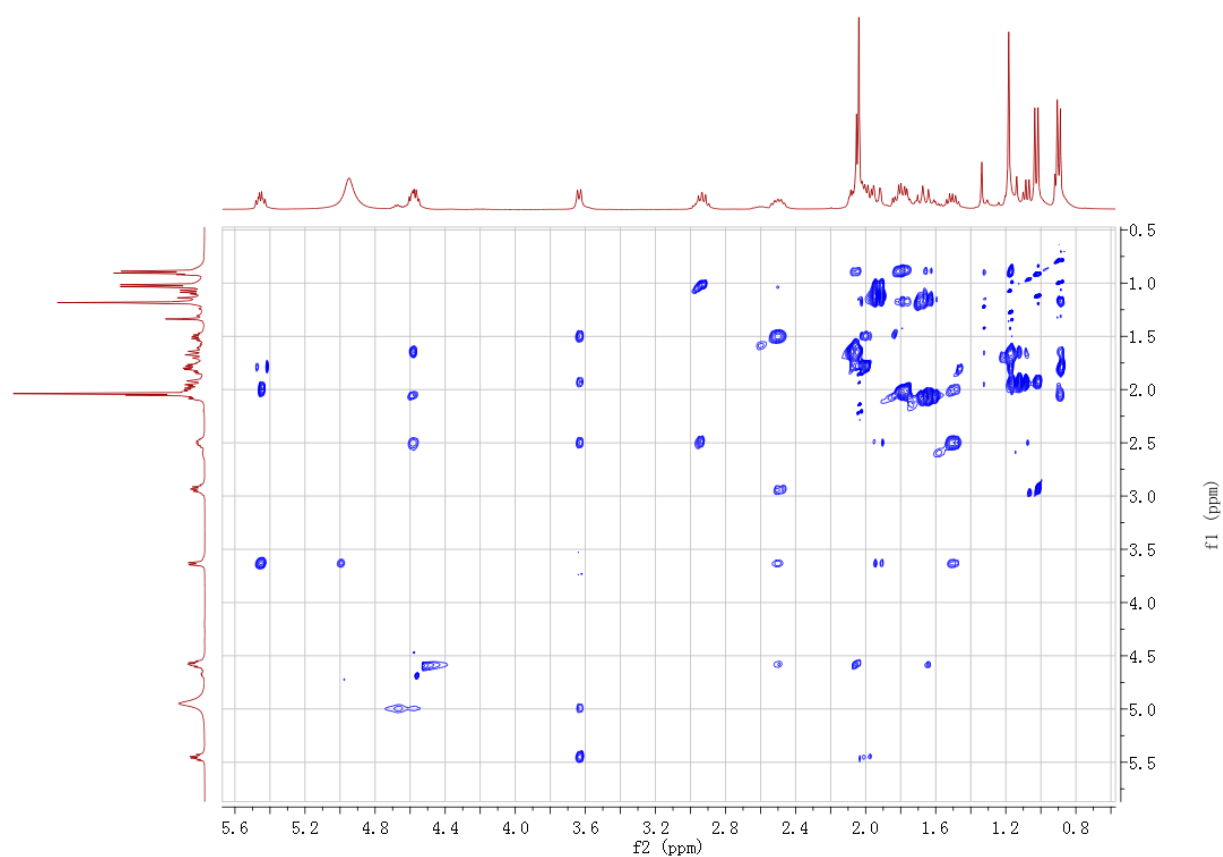


Figure S7. NOESY of compound 1.

## Acquisition Parameter

Source Type	ESI	Ion Polarity	Positive	Set Nebulizer	0.3 Bar
Focus	Not active	Set Capillary	4500 V	Set Dry Heater	180 °C
Scan Begin	100 m/z	Set End Plate Offset	-500 V	Set Dry Gas	4.0 l/min
Scan End	2000 m/z	Set Collision Cell RF	2000.0 Vpp	Set Divert Valve	Waste

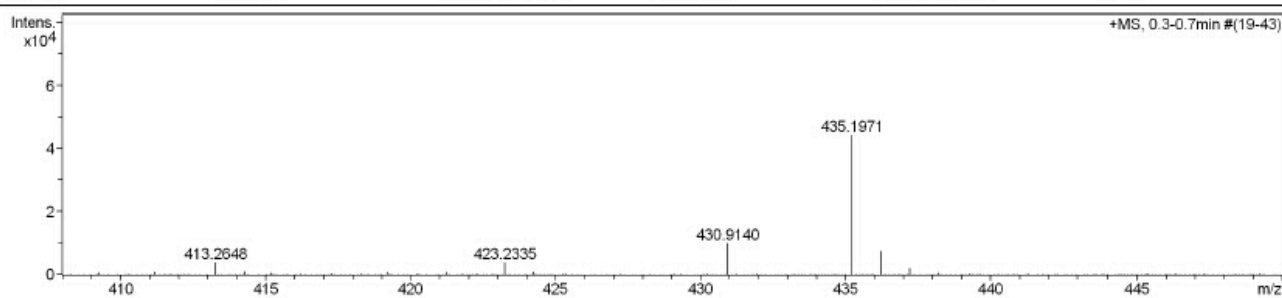
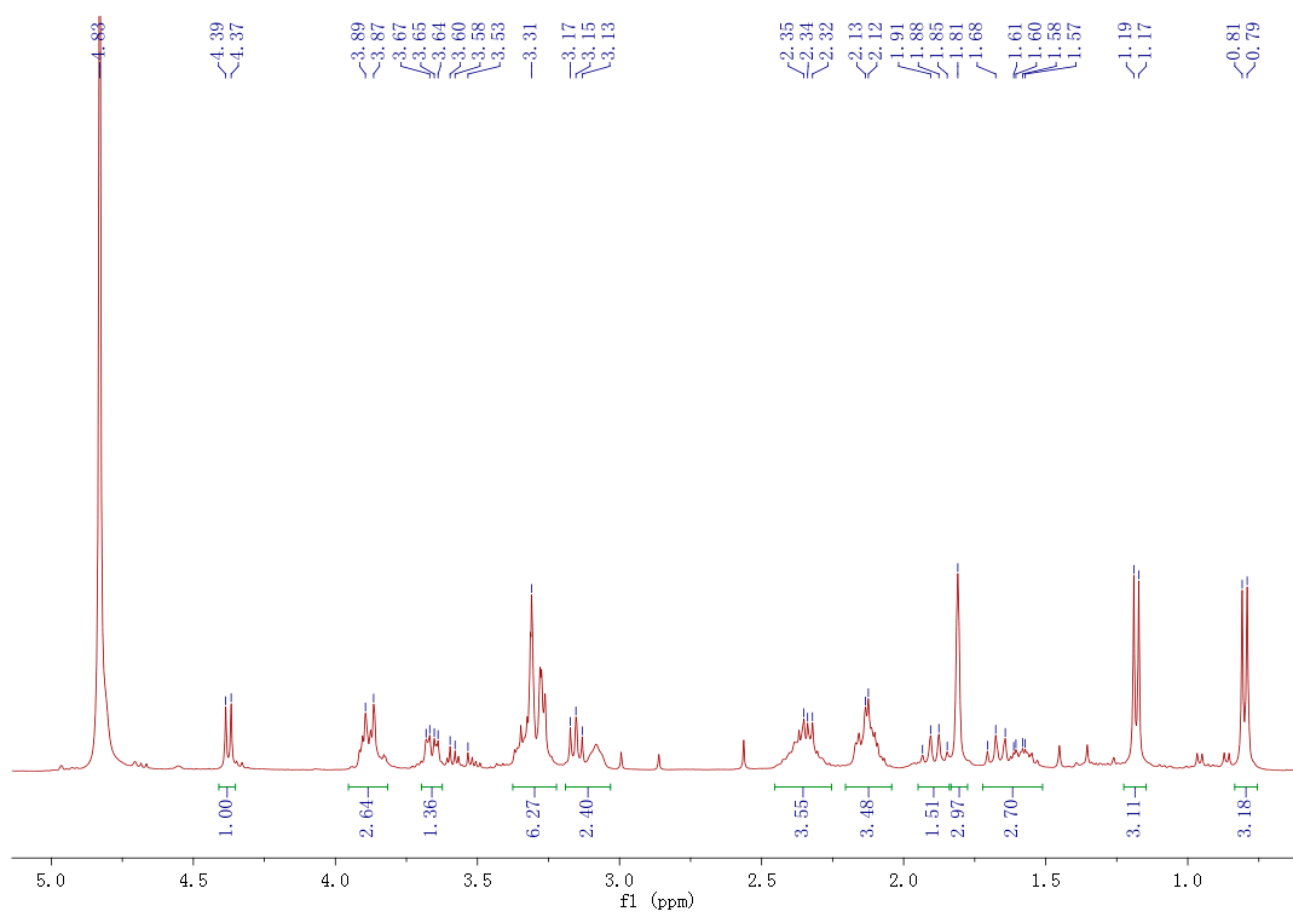


Figure S8. HR-ESIMS of compound 2.

Figure S9. <sup>1</sup>H-NMR of compound 2.

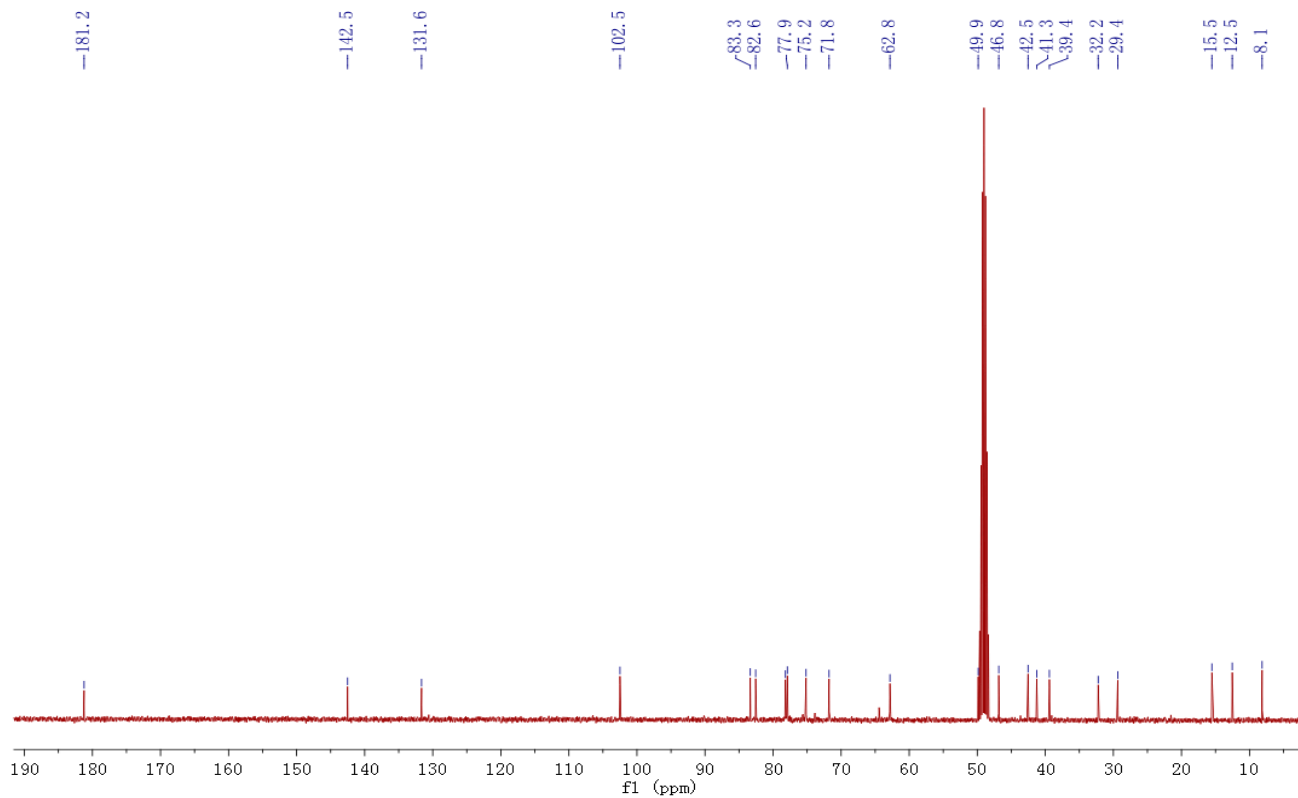


Figure S10.  $^{13}\text{C}$ -NMR of compound 2.

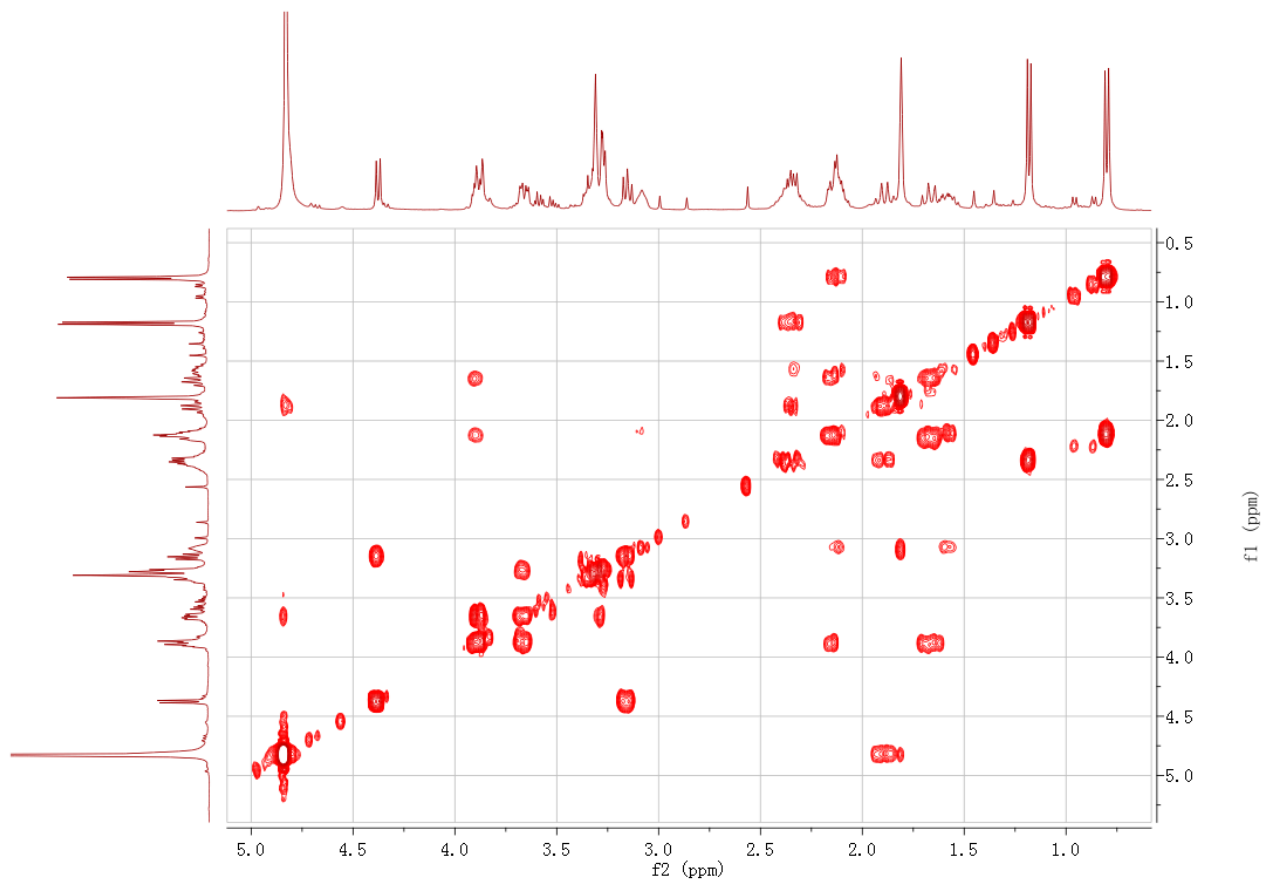


Figure S11.  $^1\text{H}$ - $^1\text{H}$  COSY of compound 2.

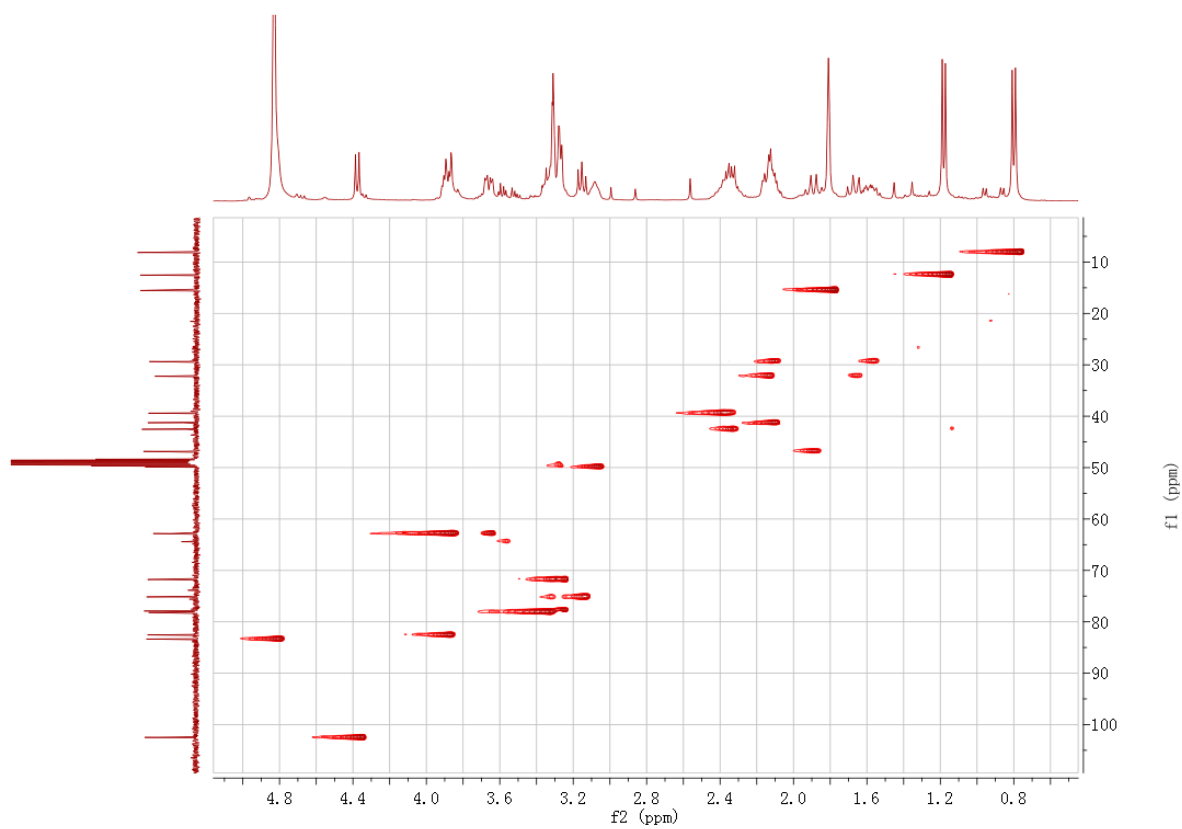


Figure S12. HSQC of compound 2.

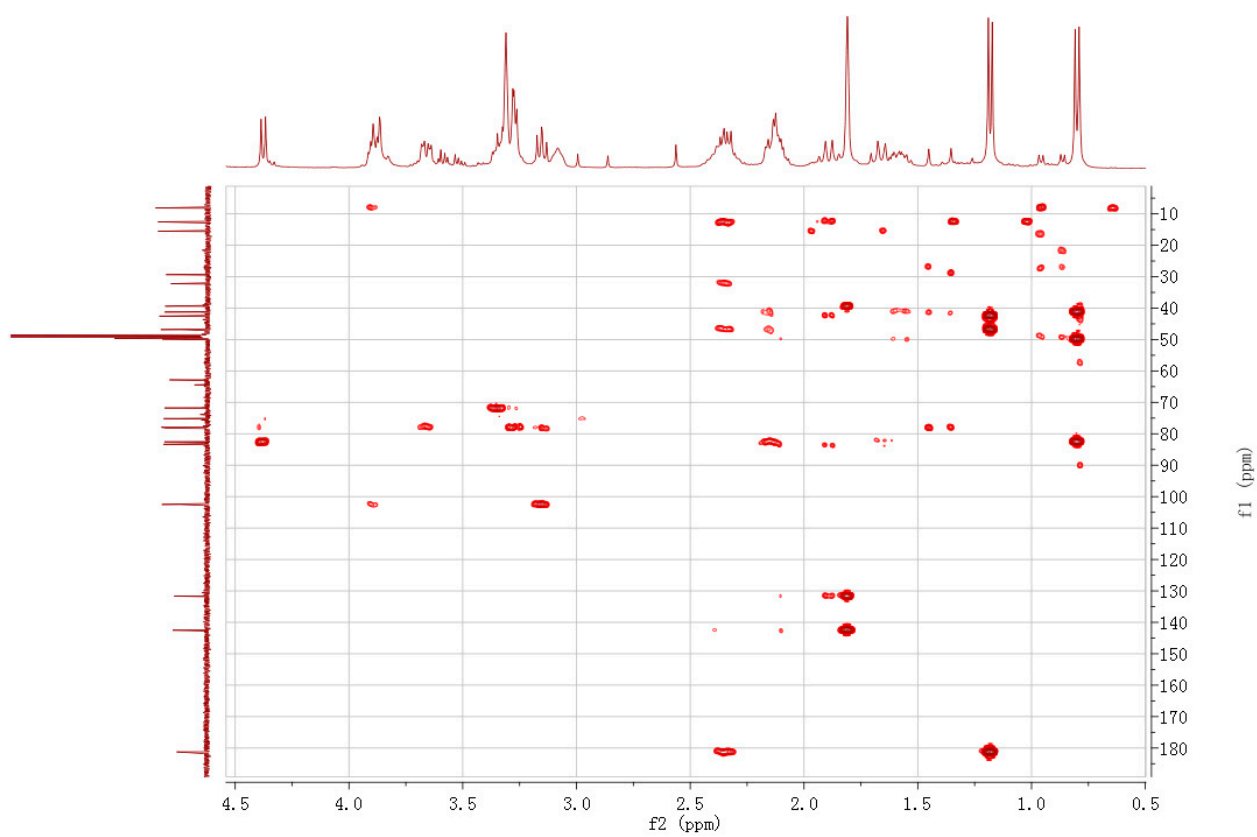


Figure S13. HMBC of compound 2.

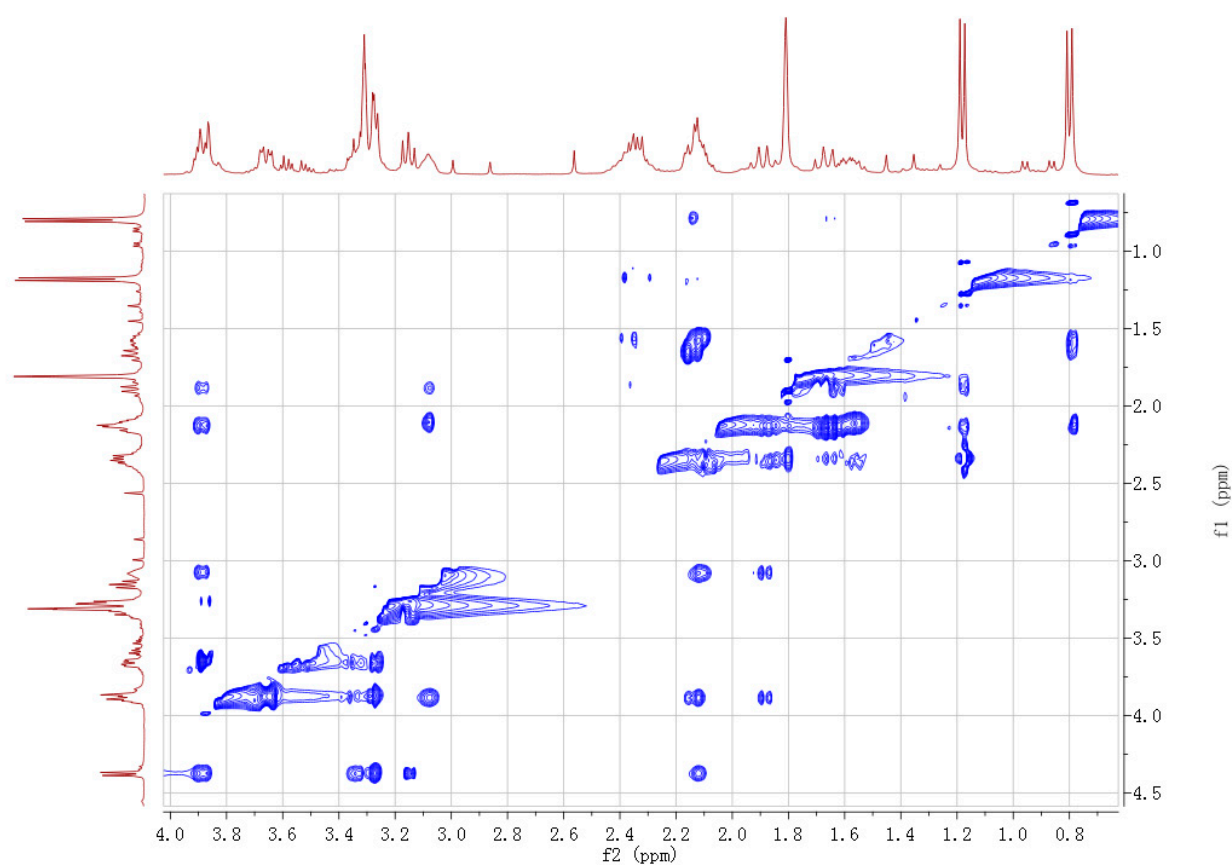


Figure S14. NOESY of compound 2.

Acquisition Parameter

Source Type	ESI	Ion Polarity	Positive	Set Nebulizer	0.3 Bar
Focus	Not active	Set Capillary	4500 V	Set Dry Heater	180 °C
Scan Begin	100 m/z	Set End Plate Offset	-500 V	Set Dry Gas	4.0 l/min
Scan End	2000 m/z	Set Collision Cell RF	2000.0 Vpp	Set Divert Valve	Waste

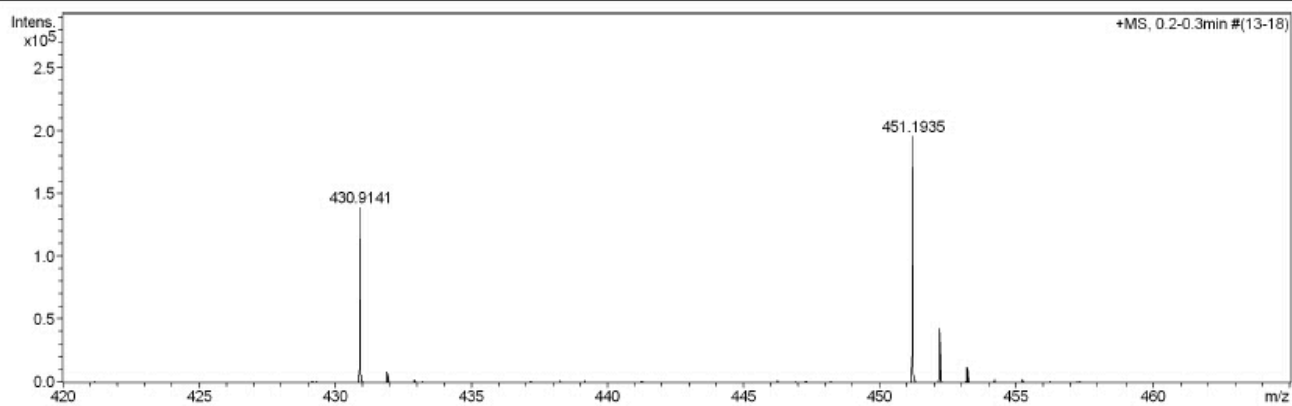


Figure S15. HR-ESIMS of compound 3.



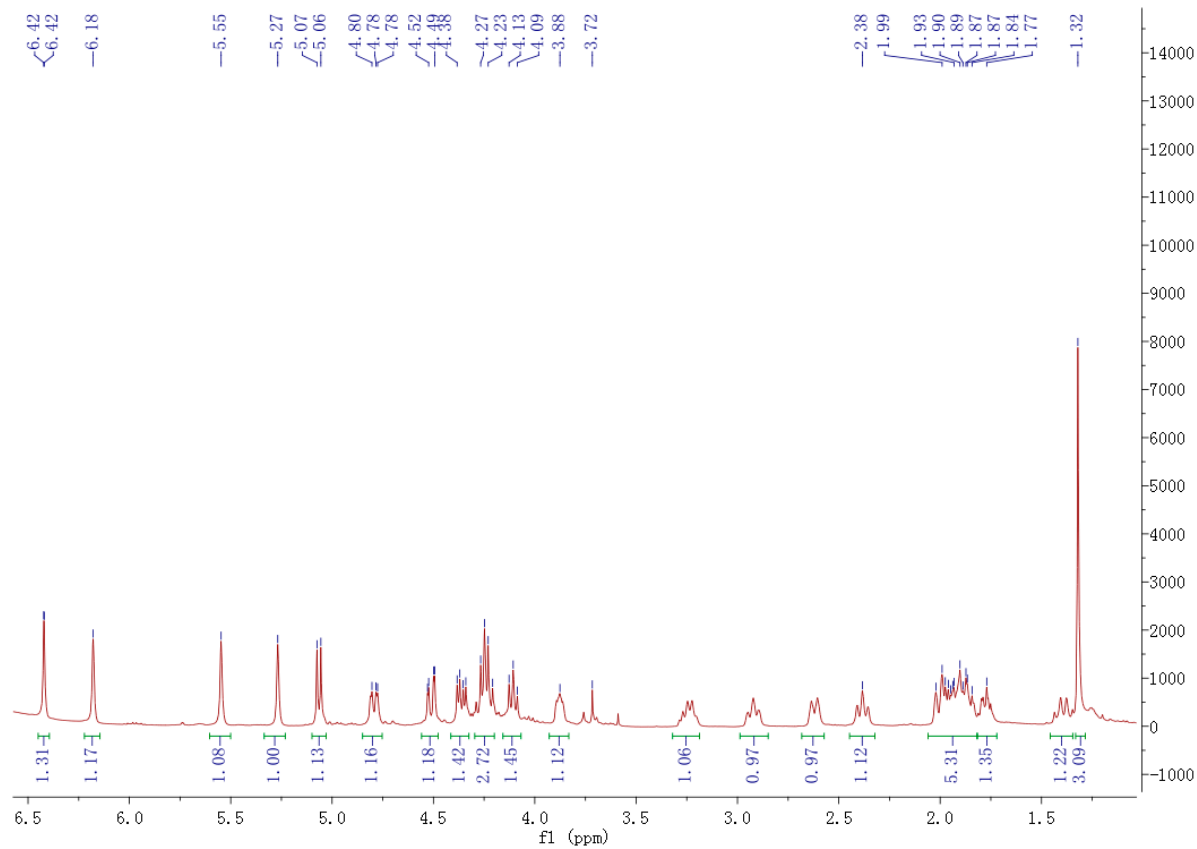


Figure S16.  $^1\text{H}$ -NMR of compound **3**.

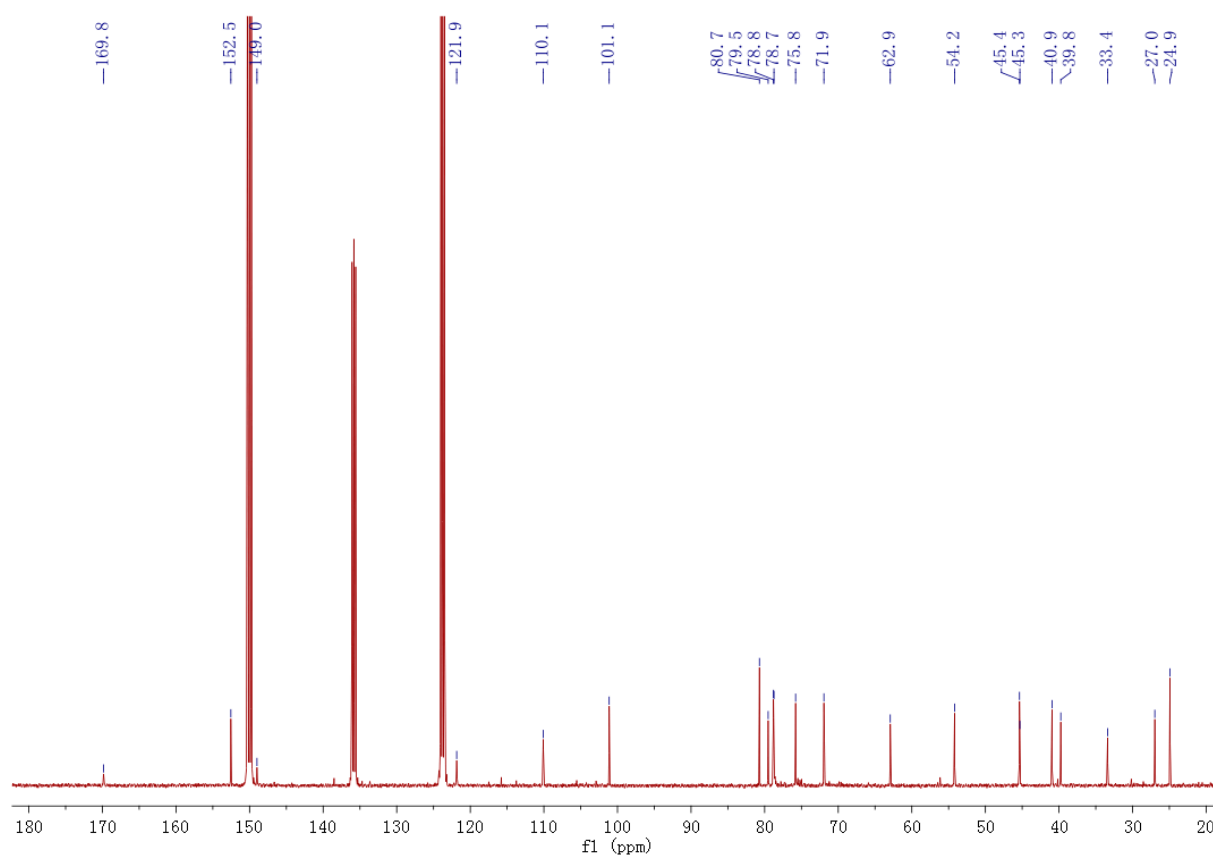


Figure S17.  $^{13}\text{C}$ -NMR of compound **3**.

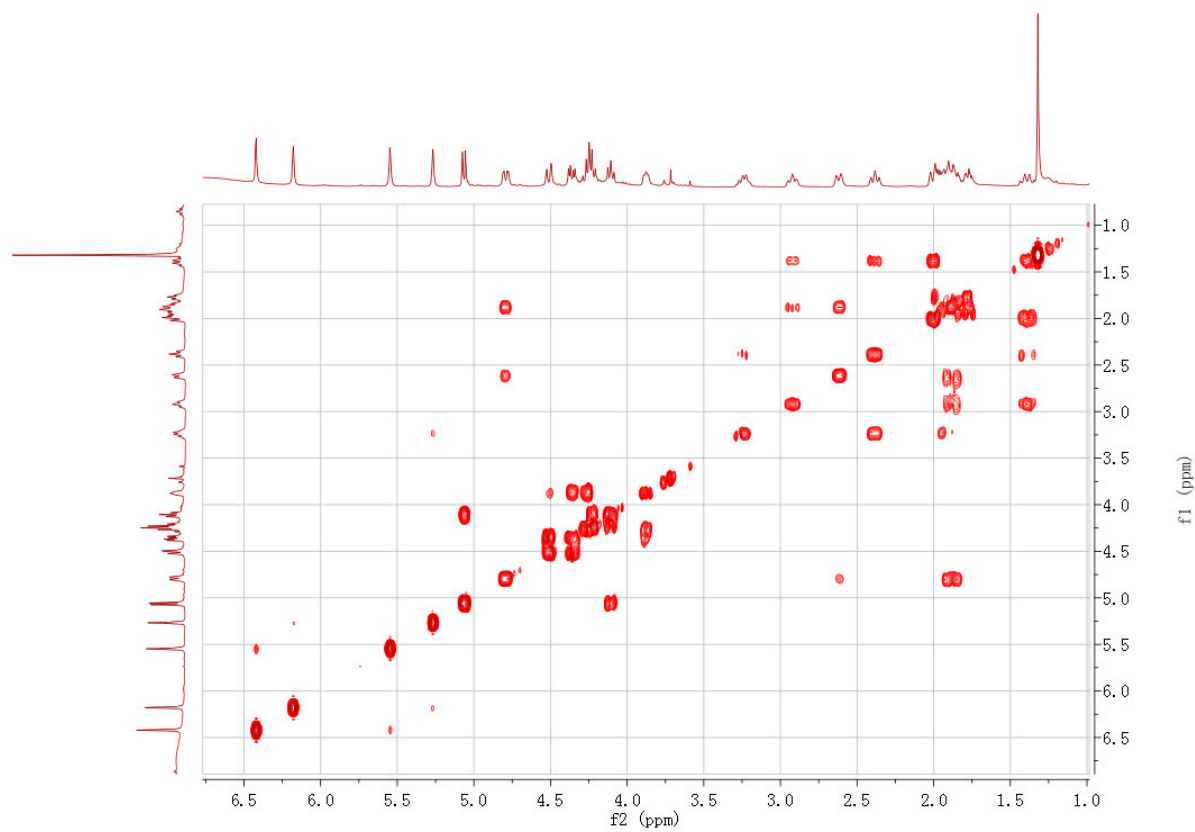


Figure S18.  $^1\text{H}$ - $^1\text{H}$  COSY of compound 3.

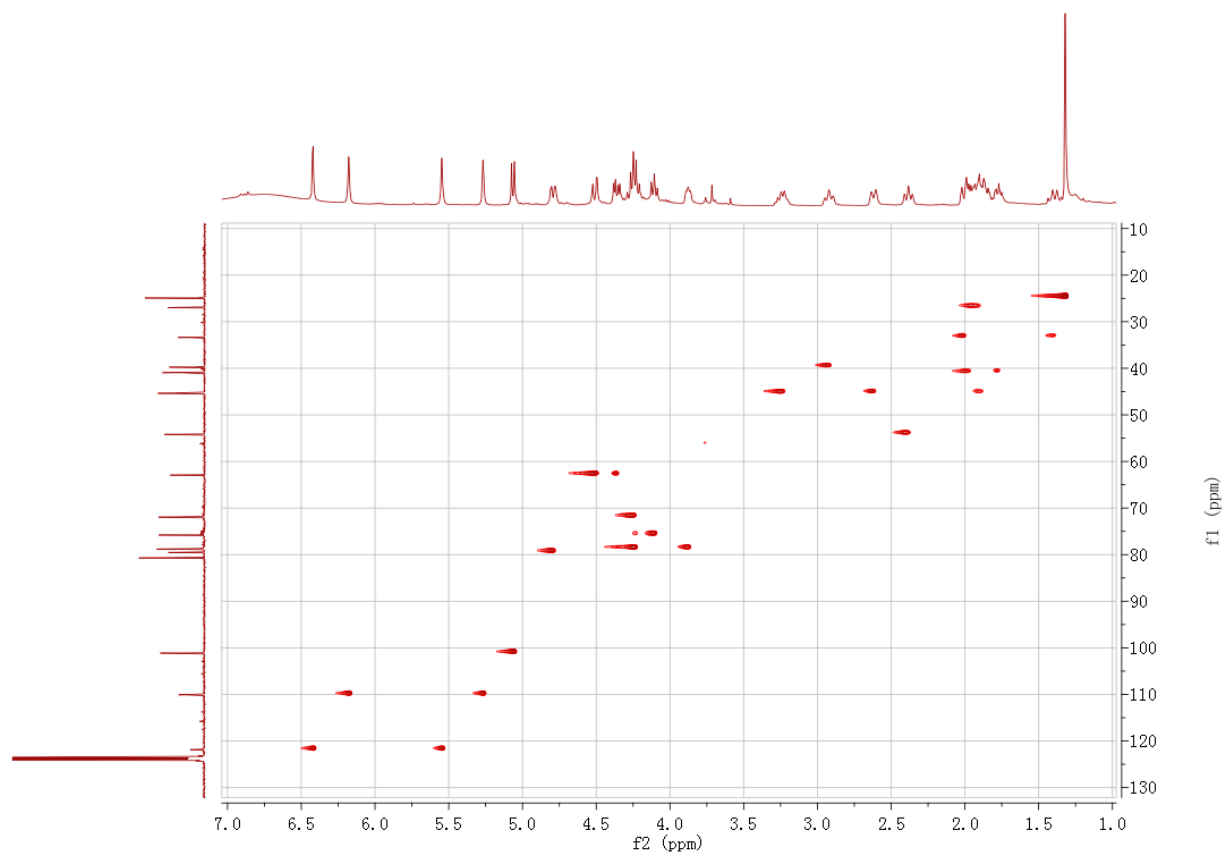


Figure S19. HSQC of compound 3.

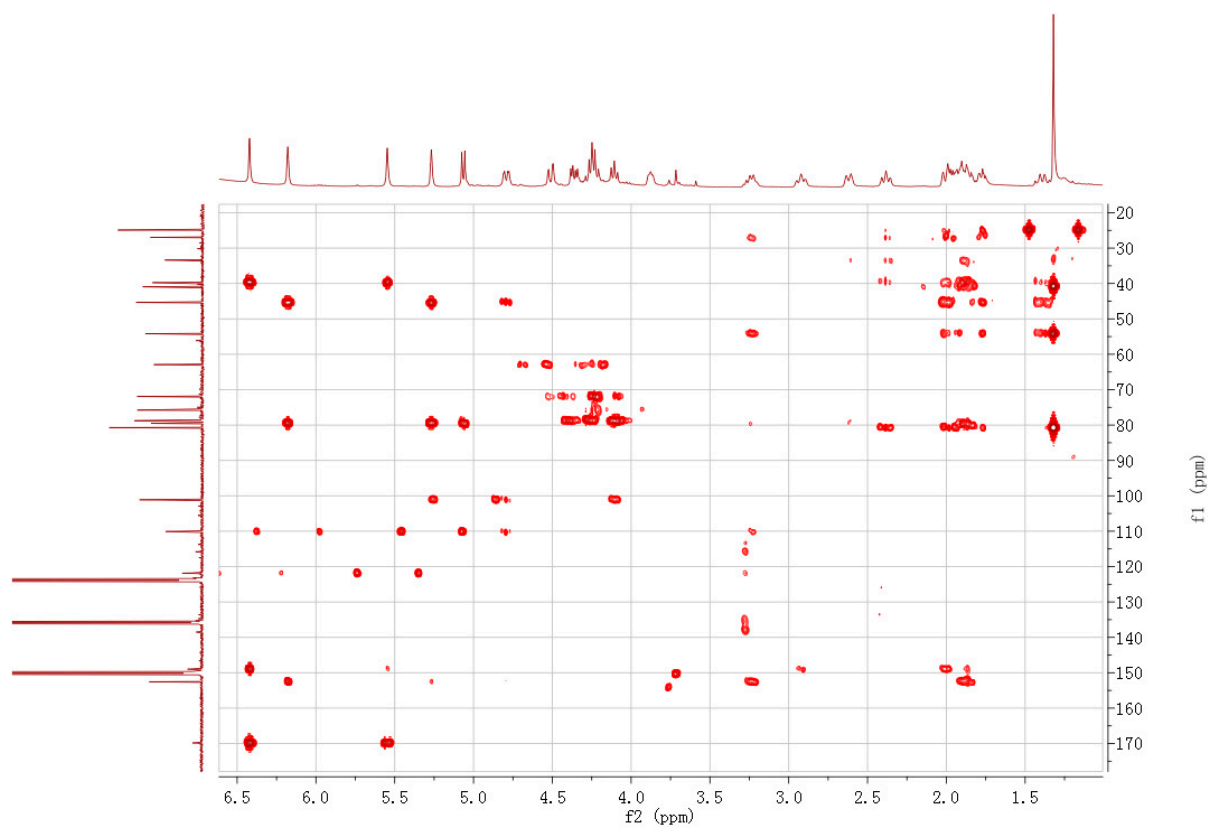


Figure S20. HMBC of compound 3.

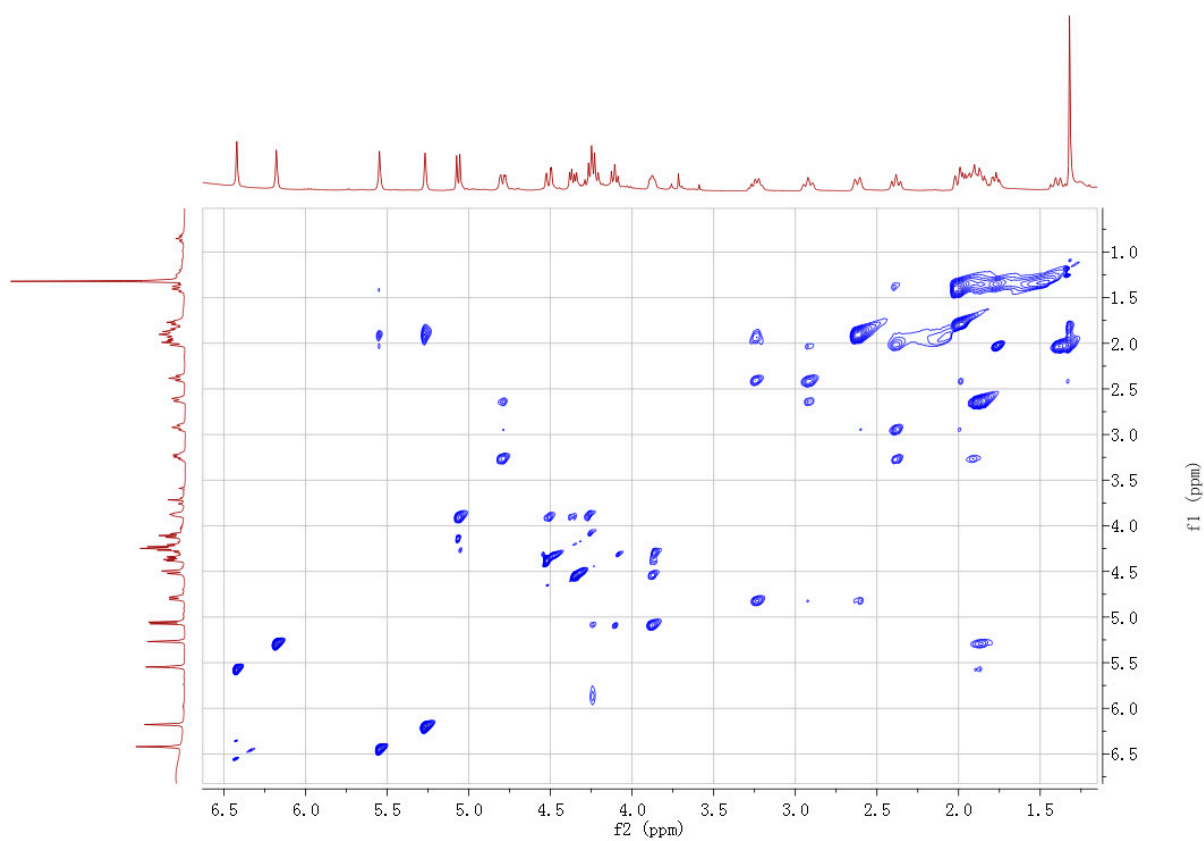


Figure S21. NOESY of compound 3.