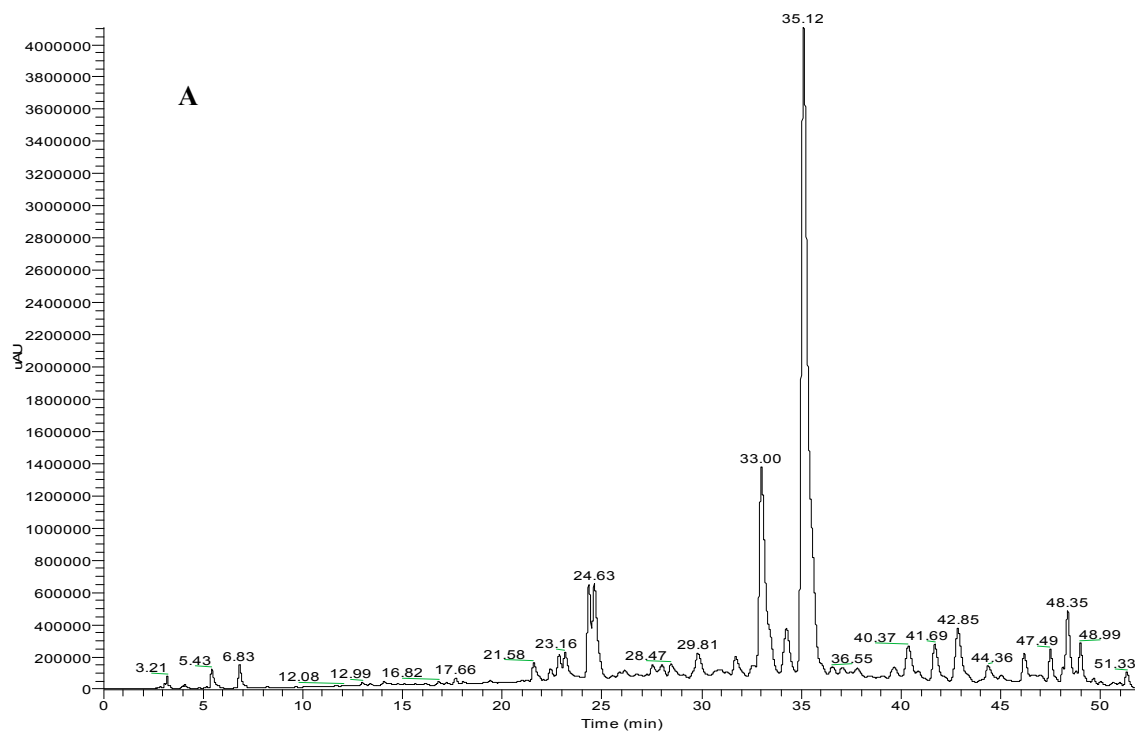
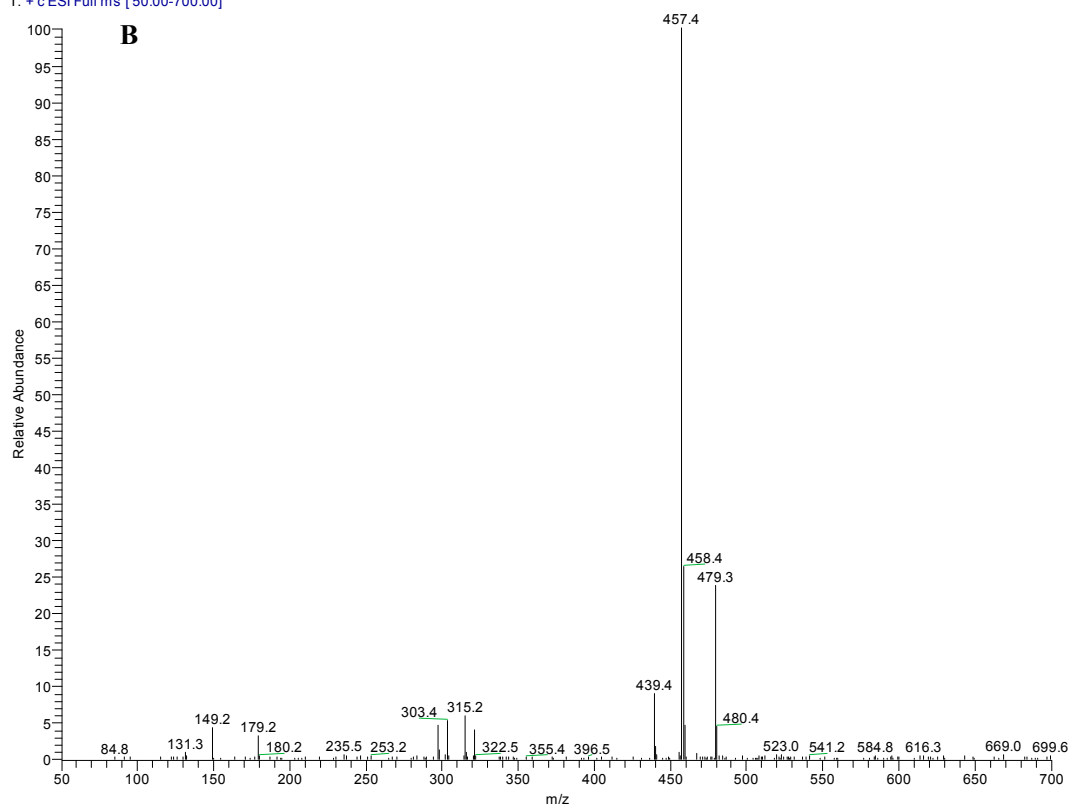


# Supplementary Materials: Selective Extraction of Flavonoids from *Sophora flavescens* Ait. by Mechanochemistry

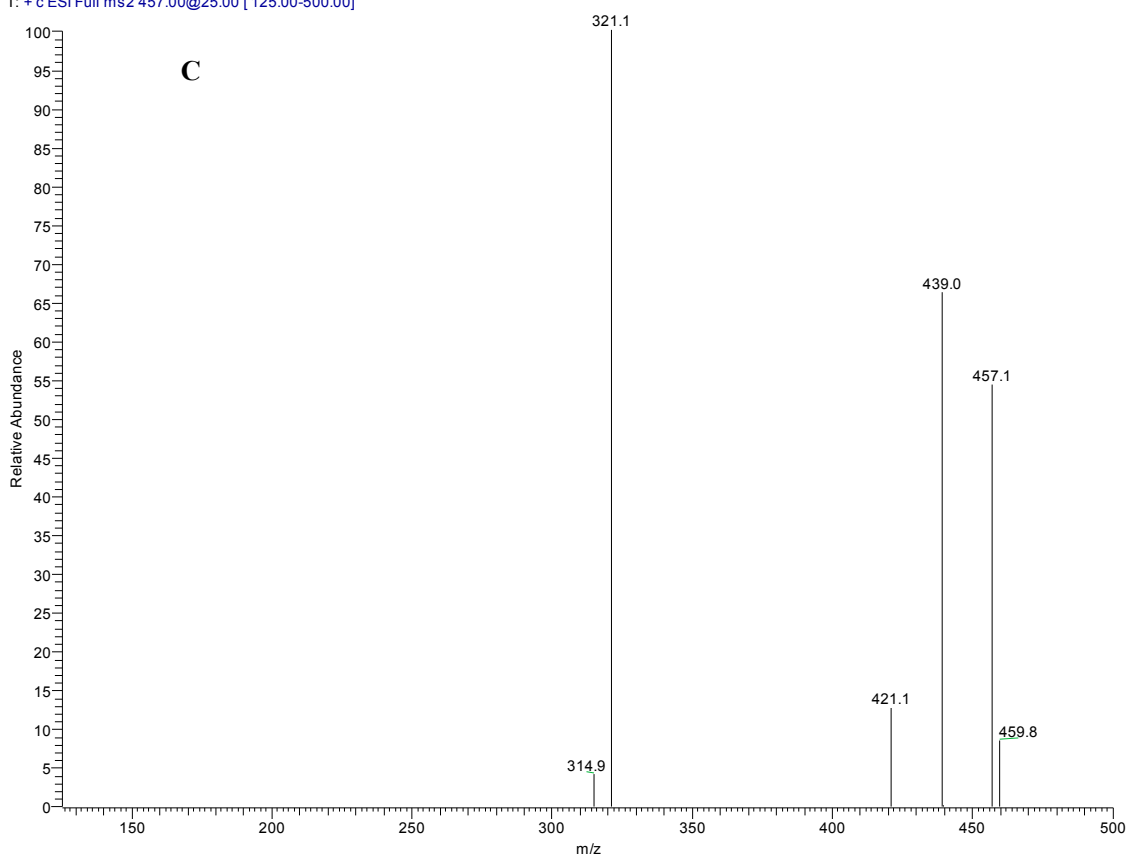
Qihong Zhang, Jingbo Yu, Yingyao Wang and Weike Su



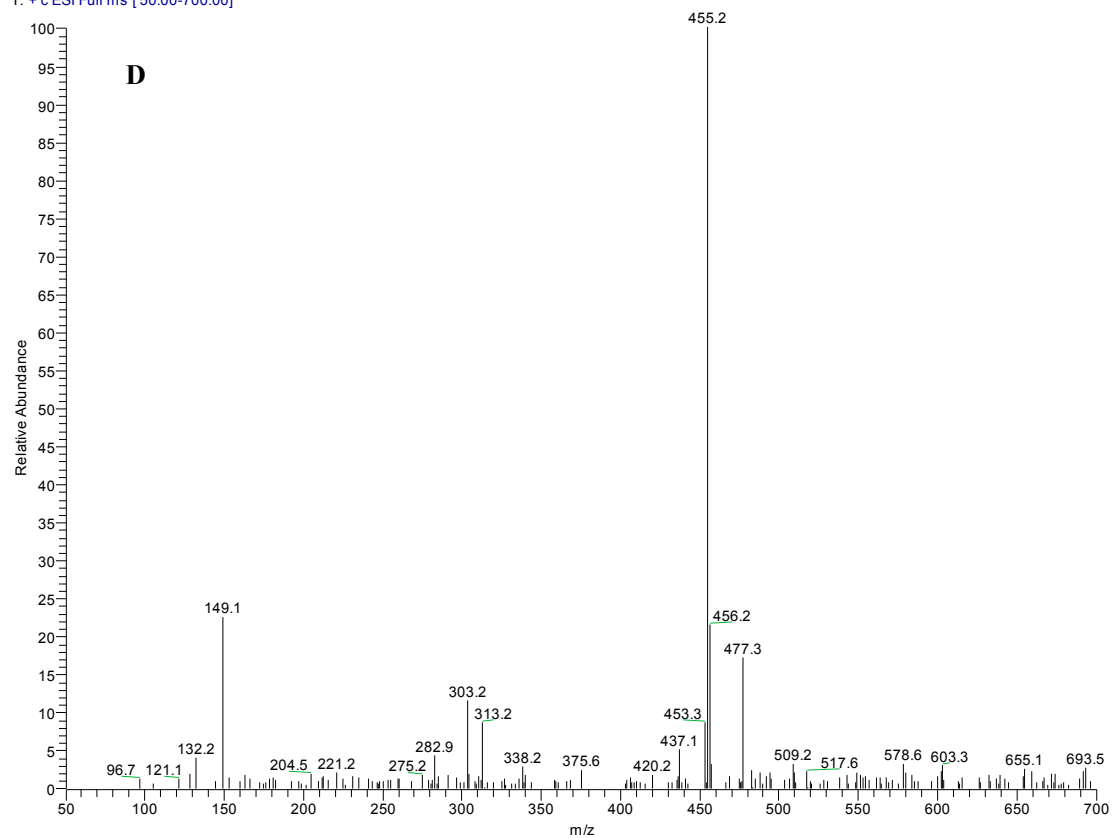
ZQH-2\_150629140507 #941 RT: 24.86 AV: 1 NL: 3.05E6  
T: +c ESI Full ms [50.00-700.00]



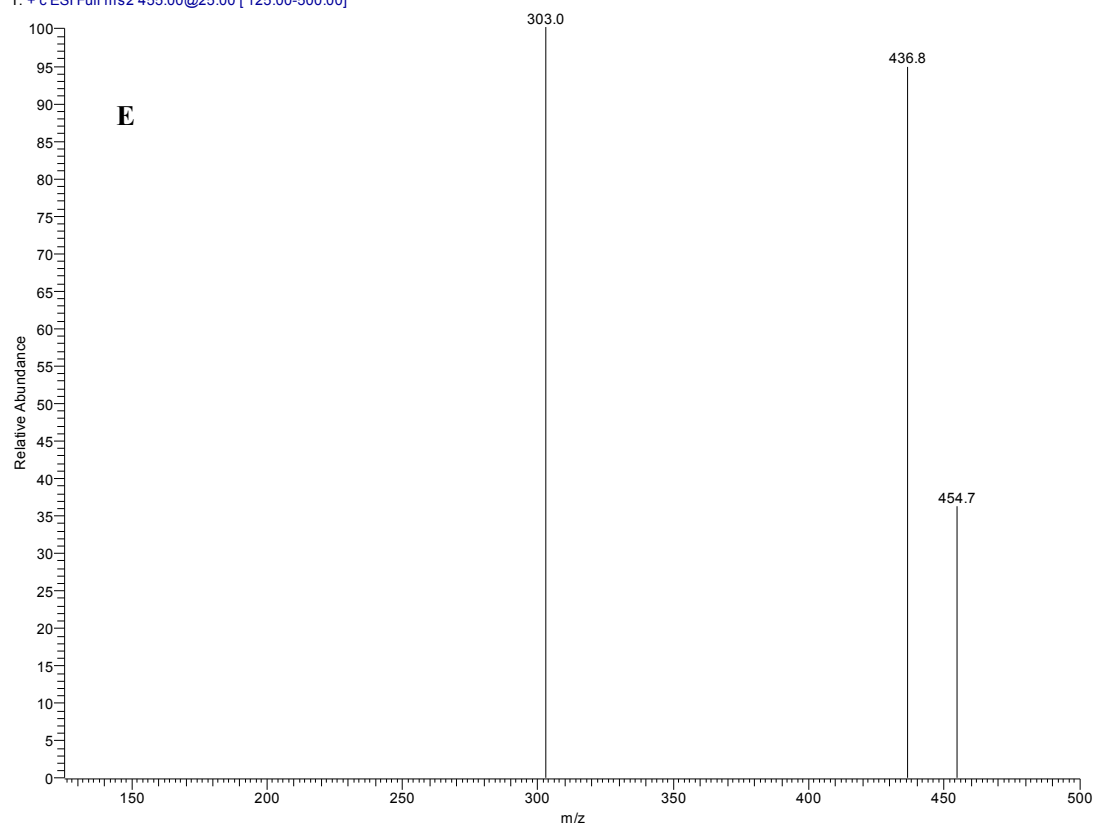
ZQH-2\_150629140507 #944 RT: 24.95 AV: 1 NL: 3.99E4  
T: + c ESI Full ms2 457.00@25.00 [125.00-500.00]



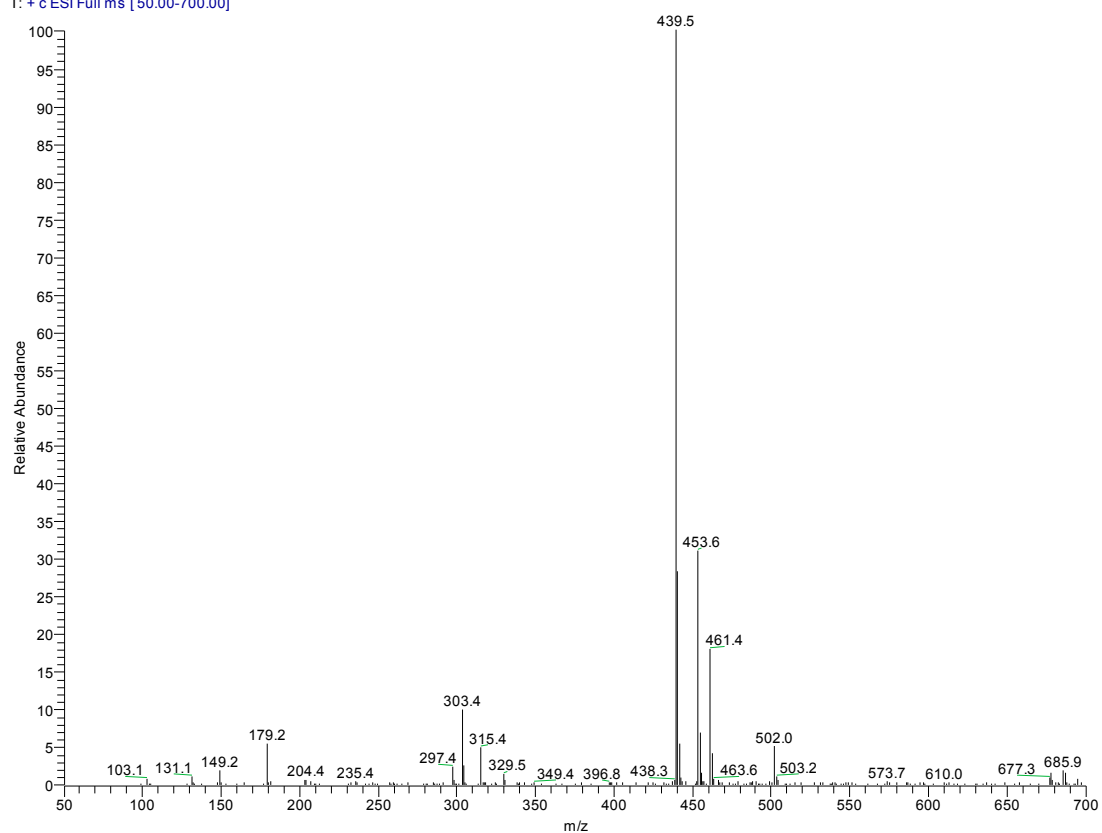
ZQH-2\_150629140507 #1281 RT: 33.86 AV: 1 NL: 6.12E5  
T: + c ESI Full ms [50.00-700.00]



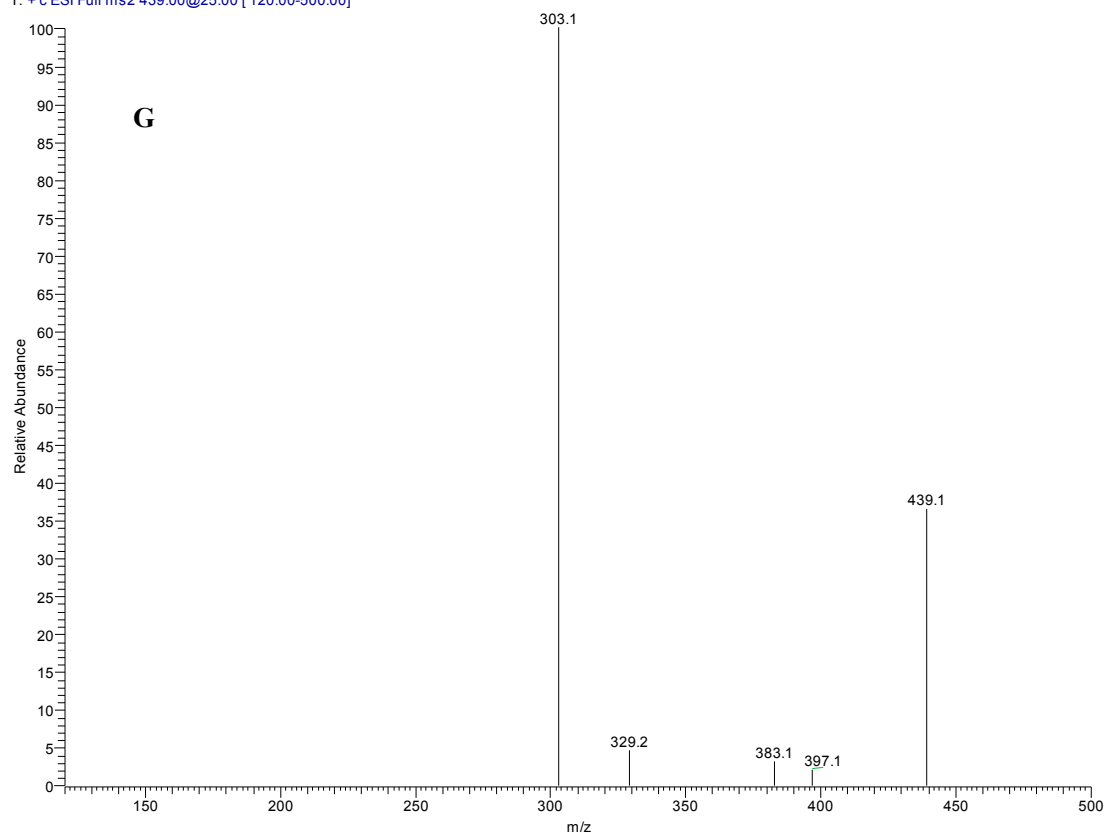
ZQH-2\_150629140507 #1285 RT: 33.97 AV: 1 NL: 4.81E3  
T: + c ESI Full ms2 455.00@25.00 [ 125.00-500.00]



ZQH-2\_150629140507 #1356 RT: 35.84 AV: 1 NL: 4.10E6  
T: + c ESI Full ms [ 50.00-700.00]



ZQH-2\_150629140507 #1358 RT: 35.91 Av: 1 NL: 4.33E4  
T: + c ESI Full ms2 439.00@25.00 [ 120.00-500.00]



**Figure S1.** HPLC-MS/MS chromatograms of the main constituents of flavonoids. (A) Typical HPLC-MS chromatograms of flavonoids; (B)  $[M + 1]^+$  of peak 4; (C)  $MS^2$  of peak 4; (D)  $[M + 1]^+$  of peak 5; (E)  $MS^2$  of peak 5; (F)  $[M + 1]^+$  of peak 6; (G)  $MS^2$  of peak 6.