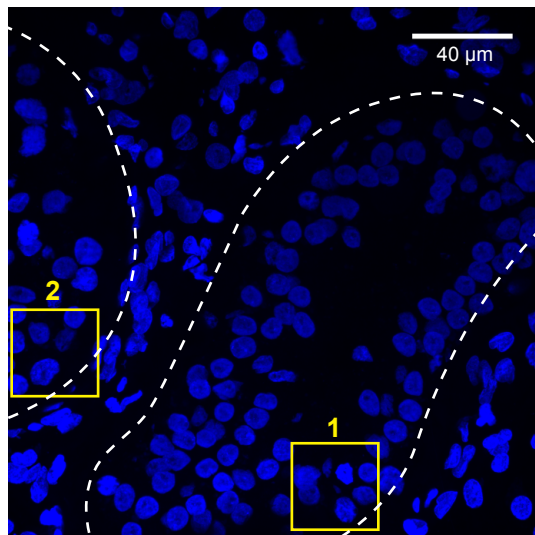


Fig. S8

a



b

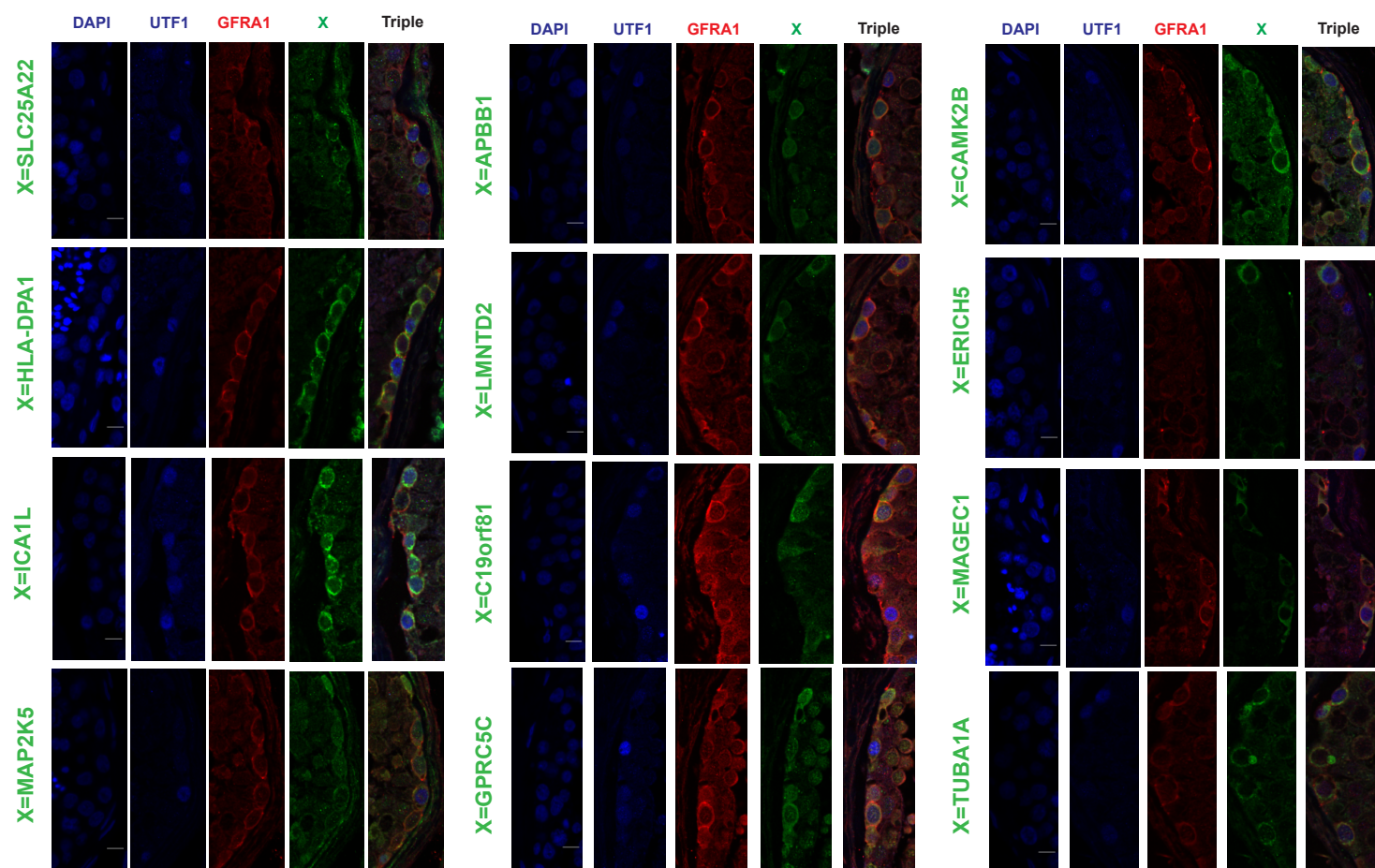


Fig. S8. Visualization of RNA FISH and Protein Staining.

(a) Low magnification of the DAPI staining of the testis tubular cross sections represented in Fig. 8a. Yellow boxes highlight the two positions presented in Fig. 8a.

(b) Immunolocalization of UTF1 (State 0 marker, in blue), GFRA1 (State 1 marker, in red) and 12 additional candidate markers (in green). Each antigen (named in green on the left side) is represented by 5 panels. All pictures are at the same magnification and the white bar in the bottom right indicates 10 μm .