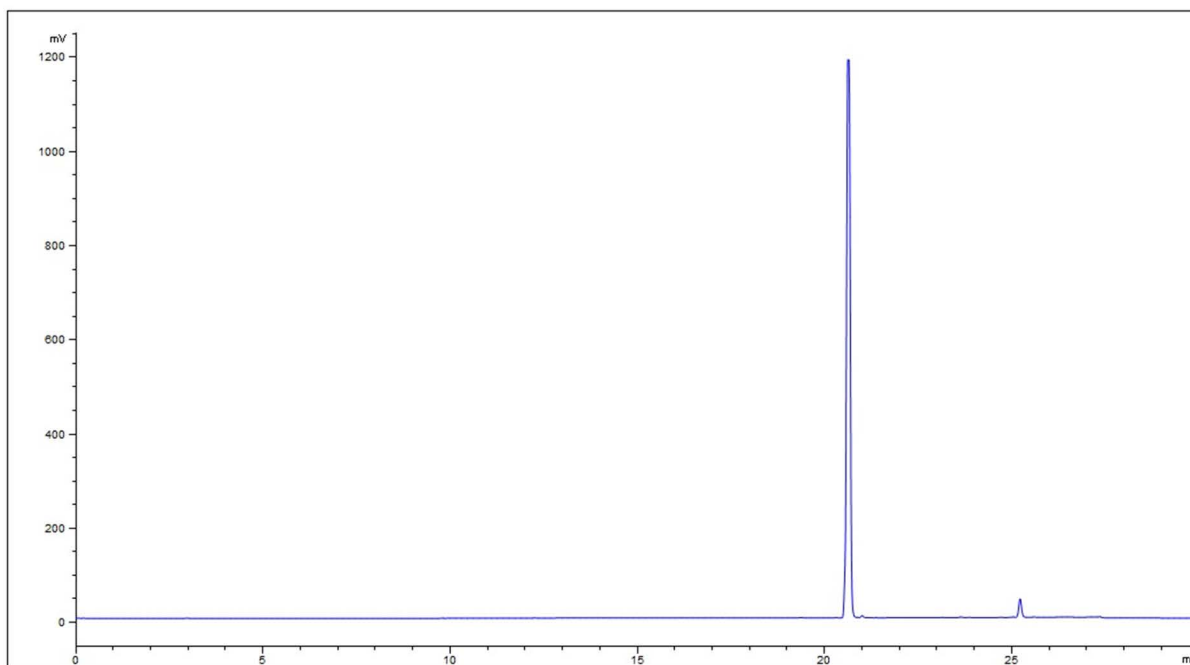
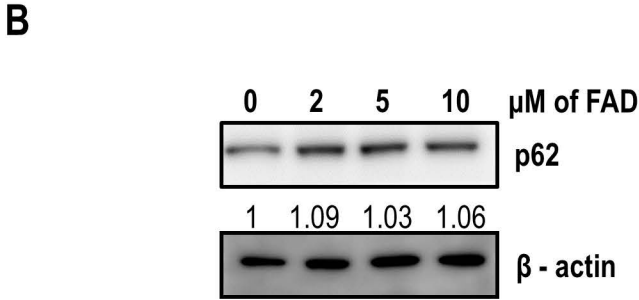
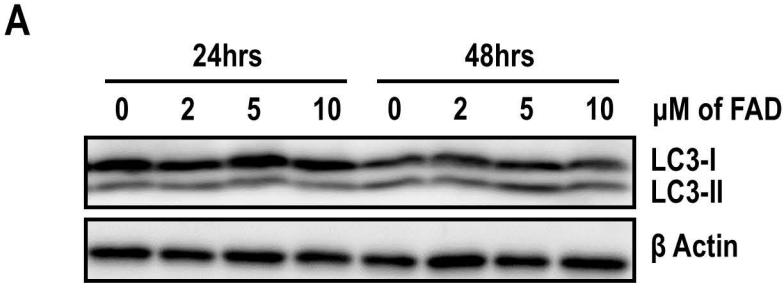


**B**



**Supplementary Figure 1. Isolation of faltarindiol.**

(A) Chemical structure of faltarindiol isolated from roots of *S. divaricate*. (B) HPLC chromatogram of faltarindiol isolated from roots of *S. divaricate*.



**Supplementary Figure 2. FAD does not induce autophagy.**

(A) Western blot analysis of LC3 proteins in vehicle (0) or FAD (2, 5, 10  $\mu$ M) treated NSCs. Cells were incubated with vehicle or FAD for the indicated time.  $\beta$  Actin was used as a loading control. (B) Western blot analysis of p62 proteins after FAD treatment. Vehicle (0) or FAD (2, 5, 10  $\mu$ M) was treated for 48hrs.  $\beta$  Actin was used as a loading control. The relative band intensities of p62 proteins are shown below the bands. The intensity of vehicle treated lane was arbitrarily set as 1.