

Figure S1. The identified components in *E. officinalis* ethanol extract using UPLC-QTOF-MS.

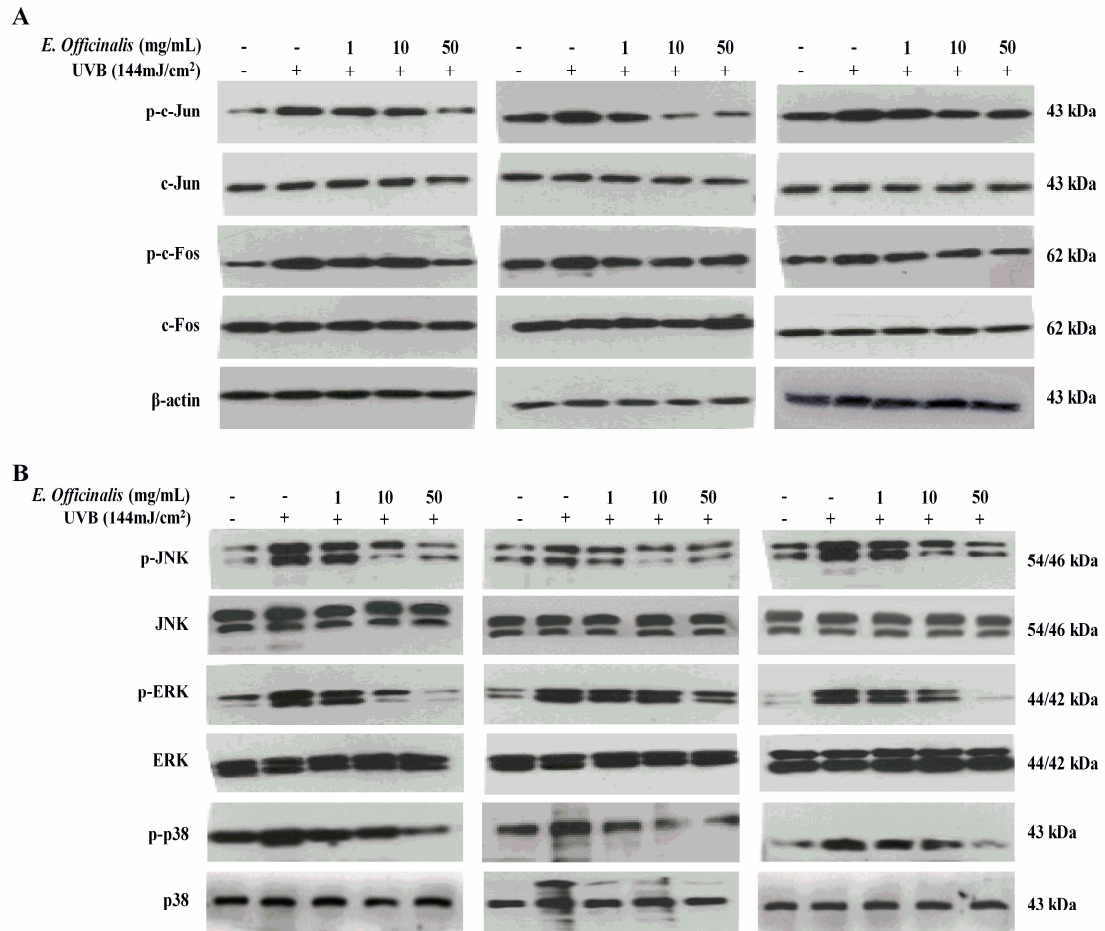


Figure S2. The original Western blot images related to this article in triplicate. **(A)** Effect of *E. officinalis* on activator protein 1 (AP-1) signaling-related proteins; **(B)** Effect of *E. officinalis* on mitogen-activated protein kinase (MAPK) signaling-related proteins.

Table S1. QTOF-MS data of identified components in *E. officinalis* ethanol extract.

Formula	Neutral Mass (Da)	Observed Neutral Mass (Da)	Observed <i>m/z</i>	Mass Error (mDa)	Mass Error (ppm)	Observed RT (min)	Observed CCS (Å ²)	Detector Counts	Response	Adducts	Identification
C ₉ H ₈ O ₄	180.0423	180.042	179.035	-0.2	-1.3	2.78	218.12	1117	1024	-H	Caffeic acid
C ₂₇ H ₃₀ O ₁₆	610.1534	610.1538	609.147	0.4	0.6	7.59	231.96	3345	2548	-H	Rutin
C ₂₁ H ₂₀ O ₁₁	448.1006	448.1007	447.093	0.1	0.2	8.3	210.51	7564	6015	-H	Luteolin-glucoside
C ₂₉ H ₃₆ O ₁₅	624.2054	624.2045	623.197	-0.9	-1.4	9.38	265.76	17,677	13,942	-H	Acteoside