

Figure S1: Concentration-response curves to determine the inhibition of LCB by NPP using VAMPtide a peptide substrate for BoNT/B. Different concentrations of NPP were incubated with LCB and fluorescent peptide substrate. The % inhibition was determined by measuring fluorescence using an excitation wavelength of 320 nm and an emission wavelength of 418 nm. The symbols represent the mean \pm S.D. of data obtained from three replicate samples. The curve was fit by nonlinear regression analysis and yielded an IC_{50} of $39.6 \pm 16.4 \mu\text{M}$.

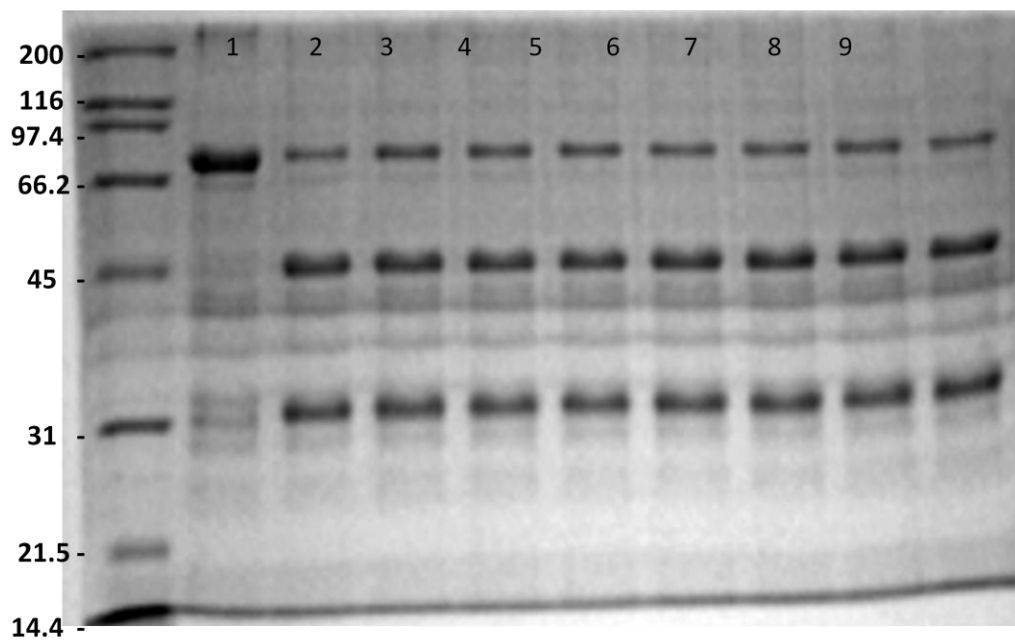


Figure S2, Inhibition of the endopeptidase activity of LCE against SNAG substrate by NPP. Lane 1 is a marker lane, Lane 2 SNAG control lane, Lane 3 SNAG incubated with Light chain E in the absence of inhibitor as a positive control, Lane 4- 10 SNAG and LCE incubated in the presence of 2 fold serially diluted (80 μ M - 1.25 μ M) NPP inhibitor. The gel is representation of one of the three independent experiments.