

Supplementary material

**PROTECTIVE EFFECT OF INTERMEDIN ON MYOCARDIAL CELL
IN A RAT MODEL OF SEVERE ACUTE PANCREATITIS**

XIAODONG DU¹, YU CAO¹, PING XUE², ZIQI LIN², ZHI ZENG^{3*}
and QING XIA²

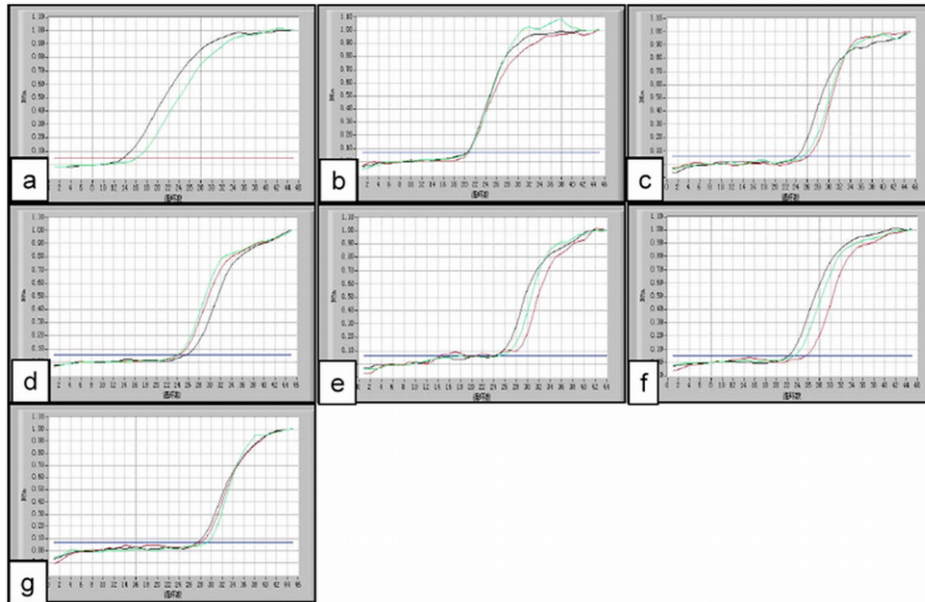
¹Department of Emergency Medicine, ²Traditional Chinese Medicine and Western Medicine, ³Cardiovascular Medicine, West China University Hospital and West China Medical School, Sichuan University, Chengdu 610041, China

Suppl. Tab. 1. PCR primer sequences and product sizes of studied genes.

Gene	Primer sequence	Fragment length (bp)
Rat Bax (TM)	R-BAXF: GTTCATCCAGGATCGAGCA R-BAXR: CAATCATCCTCTGCAGCTCC R-BAXTM: CAAGAAGCTGAGCGAGTGTCTC	151
Rat Bcl-2 (TM)	R-BCL2F : GATTGTGGCCTTCTTTGAGTT R-BCL2R : AGTTCCACAAAGGCATCCCA R-BCL2TM: CCTGAACCGCATCTGCACACC	151
Rat RAMP1 (TM)	R- RAMP1F: CTGTGTCTCAGCCGTTCAA R- RAMP1R: ATGGGCCAGAAACAGCCAA R- RAMP1TM: TGGTCTTTCCCCAGTCACAC	144
Rat RAMP2 (TM)	R- RAMP2F: ACTGGTGCAACTGGACTT R- RAMP2R: GTATCAGGTGAGCCTCAAG R- RAMP2TM: CTGGGCTTCCCAAATCCC	135
Rat RAMP3 (TM)	R- RAMP3F: GGAAGTGGTGCAACCTGT R- RAMP3TM: CTGCTACTGGCCCAACCC R- RAMP3R: CAGTTGAAAAGAACTGCCT	151
Rat IMD (TM)	R- ADM2F: CCCAGTTGCTGATGGTCA R- ADM2R: GCTGGGGGTTCTCTGGGT R- ADM2TM: CGGTTGCATCAGCCTCCTC	112
Rat β -actin (TM)	ACTBF: GAAGATCAAGATCATTGCTCCT ACTBR: TACTCTGCTTGCTGATCCA ACTBTM: CTGTCCACCTTCCAGCAGA	111

IMD = intermedin; RAMP = receptor-activity-modifying protein.

* Author for correspondence. e-mail: dxd1204@163.com, phone: 86-28-85423709, fax: 86-28-85422288



Suppl. Fig. 1. Real-time PCR amplification plot. Representative real-time PCR amplification plots for mRNA expression of IMD (a), β -actin (b), Bax (c), Bcl-2 (d), RAMP1 (e), RAMP2 (f) and RAMP3 (g).