

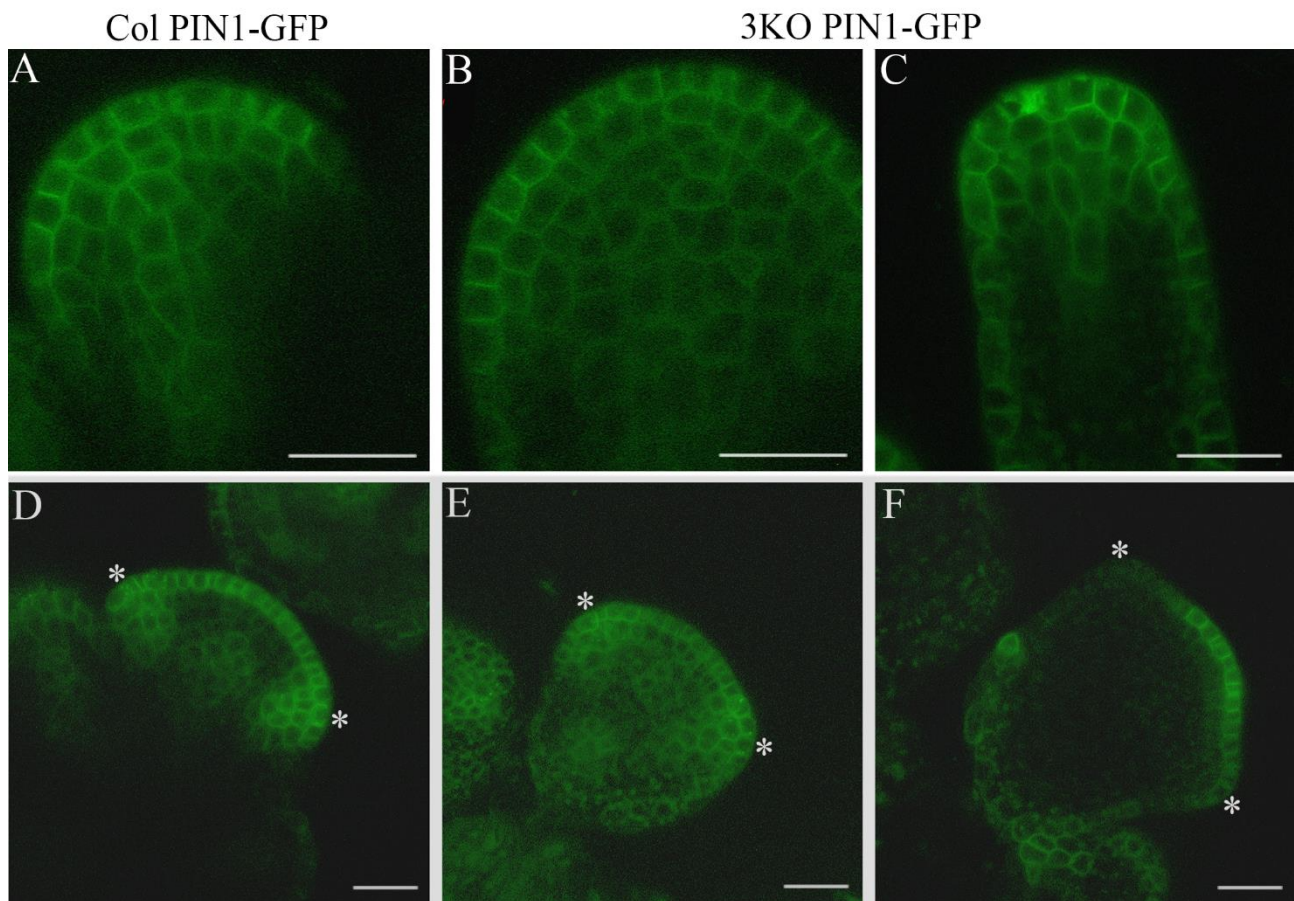
*Supplementary Material*

**Class XI myosins contribute to auxin response and senescence-induced cell death in Arabidopsis**

Eve-Ly Ojangu\*, Birger Ilau, Krista Tanner, Kristiina Talts, Eliis Ihoma, Valerian V. Dolja, Heiti Paves, Erkki Truve

\* Correspondence: Eve-Ly Ojangu: eve-ly.ojangu@ttu.ee

**1 Supplementary figure 4**



**Supplementary Figure 4. The PIN1-GFP expression in early stages of floral primordia development.** (A-C) Upper panel represents very early stage of primordium development. In 3KO PIN1-GFP plants, the shapes of primordia vary occasionally, notice the pin-like shape of 3KO PIN1-GFP primordium (C). (D-F) Lower panel represents later stage of primordium development where PIN1-GFP accumulation defines the sites of petal initiation (white asterisks). The PIN1-GFP patterning in developing 3KO floral primordia is partially aberrant since the PIN1 accumulation is occasionally absent at the sites of petal emergence (F). Images represent single optical slices. Scale bars are 20  $\mu$ m.

