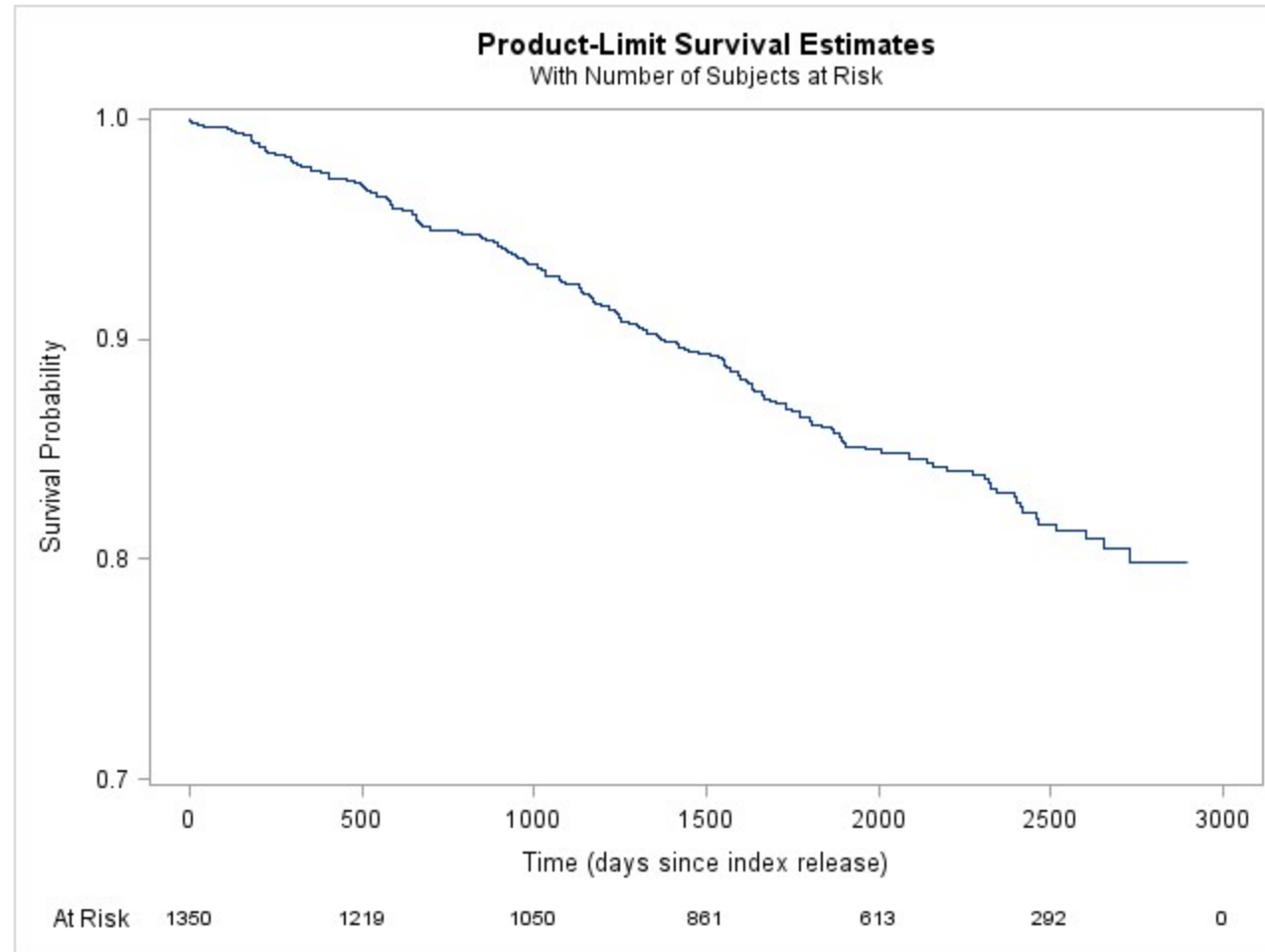


Supplemental Figure. Time from index release to death from any cause



Supplementary Table 1. ICD-10 codes for causes of death

Classification	ICD-10 Code
AIDS OI- Aspergillosis	B44.1
AIDS OI- Bacterial infection	B20.1
AIDS OI- Candidiasis	B37.1, B37.8, B37.9
AIDS OI- Cryptococcosis	B45.1, B45.7, B45.9
AIDS OI- Herpes	B00.9
AIDS OI- Kaposi sarcoma	B21.0, C46.7, C46.9
AIDS OI- Mycosis (unspecified)	B20.5, B49
AIDS OI- Neoplasm	B21.3, B21.7, B21.8, B21.9
AIDS OI- NHL	B21.2, C83.3, C85.9
AIDS OI- PML	A81.2
AIDS OI- Pneumocystosis	B59
AIDS OI- Pneumonia	J15.4, J18.0, J18.1, J18.9
AIDS OI- Tuberculosis or other Mycobacteria	A16.9, B20.0, B90.9
AIDS OI- Infection (other)	B20.3, B20.7, B20.8, B20.9
Acidosis	E87.2
Anoxic brain damage or compression	G93.1, G93.5
Aortic dissection	I71.0
Assault (homicide)	X95, X99, Y09
Crohn's Disease	K50.9
Lung disease (other than malignancy)	J43.9, J44.9, J47, J84.1, J98.4
Cardiac arrest	I46.9
Cardiogenic shock	I31.3, R57.0
Coagulation defect (unspecified)	D68.9
Hyperkalemia	E87.5
Diabetes	E14.1, E14.2, E14.9
Disseminated intravascular coagulation	D65
Dementia (unspecified)	F03
Endocarditis	I33.0, I33.9, I38
Exposure- hypothermia	T68, T69.9, X31
Gallbladder disease	K82.9
HIV	B20.0, B20.1, B20.3, B20.5, B20.7, B20.8, B20.9, B21.3, B21.7, B21.8, B21.9, B22.0, B22.7, B23.2, B23.8, B24, D84.9, D89.9
HIV encephalopathy	B22.0, G93.4
Cardiovascular disease	I05.9, I10, I11.9, I20.9, I21.9, I25.0, I25.1, I27.2, I27.9, I42.0, I42.9, I45.8, I49.9, I50.0, I51.7
Hematologic disorder	D61.9, D69.5

Hemorrhage (gastrointestinal)	K66·1, K92·0, K92·2, I85·0
Hemorrhage (respiratory)	R04·8
Hemorrhage (unspecified)	R58·0
Hepatitis B- Acute	B16·9
Hepatitis C- Chronic	B18·2
Hypotension, unspecified	I95·9
Viral infection (unspecified)	B34·9
Infection (unspecified)	B99
Kidney disease/failure	I12·0, N17·9, N18·5, N18·9, N19, N28·8
Liver cell carcinoma	C22·0
Liver failure, secondary to alcohol abuse/dependence	K70·3
Hepatorenal syndrome	K76·7
Liver disease/failure	K72·9, K74·6, K75·9, K76·9
Bacterial infection	A49·9, G00·9
Septicemia	A41·0, A41·9
Infection (other)	M86·9, N39·0, L02·1
Cause not specified	R99
Malignancy (other)	C18·9, C20, C22·1, C32·9, C34·9, C67·9, C78·7, C79·5, C79·8, C80
Pneumonitis	J69·0
Drug overdose	X42, X44, Y14
Poisoning (and/or abuse/dependence)- Alcohol	F10·1, F10·2, F10·9, T51·0, T51·9, X45
Poisoning- Benzodiazepines	T42·4
Poisoning (and/or abuse/dependence)- Cocaine	F14·1, T40·5
Poisoning- Opioids (heroin)	T40·1
Poisoning- Opioids (methadone)	T40·3
Poisoning- Opioids (narcotics)	X42
Poisoning (and/or abuse dependence)- Opioids (other)	F11·9, T40·2, T40·6
Poisoning- Opioids (synthetic)	T40·4
Poisoning- Unspecified substances	T50·9, X44, Y14
Polysubstance abuse/dependence	F19·1, F19·2, F19·9
Respiratory failure	J80, J96·0, J96·9, J98·9, R09·2
Seizure	R56·8
Self-harm (suicide)	T71, T75·1, X70, X71
Stroke/bleed/Pulmonary embolism	I26·9, I60·9, I62·0
Tobacco abuse/dependence	F17·9
Trauma/accidental injury	S01·8, S01·9, S06·8, S09·9, S19·9, S31·8, S36·0, S39·9, T01·9, T09·9, T14·1, T14·9, T30·0, V09·2, V89·2, X00, X59·9

Wasting	E46, R62-8, R64
---------	-----------------

Supplementary Table 2. Primary and secondary causes of death among people with HIV formerly incarcerated in an integrated prison system, 2007-2014, for deaths with cause available (N=170)

Primary cause of death Secondary causes of death ^a	Number of deaths/number of deaths in (sub)category	%
HIV/AIDS	78/170	45.9%
Opportunistic infection/condition ^b	44/78	56.4%
Liver disease, failure or viral hepatitis ^c	30/78	38.5%
Cardiac arrest	17/78	21.8%
Respiratory failure	17/78	21.8%
Cardiovascular disease	14/78	18.0%
Kidney disease or failure	9/78	11.5%
Wasting	5/78	6.4%
Hemorrhage	5/78	6.4%
Acidosis	4/78	5.1%
Polysubstance abuse or dependence	3/78	3.9%
Tobacco abuse or dependence	2/78	2.6%
Hematologic disorder	2/78	2.6%
Malignancy (other)	2/78	2.6%
Brain damage	2/78	2.6%
Alcohol abuse or dependence	1/78	1.3%
Lung disease other than malignancy	1/78	1.3%
Crohn's disease	1/78	1.3%
Disseminated intravascular coagulation	1/78	1.3%
Hypotension	1/78	1.3%
Dementia	1/78	1.3%
Diabetes	1/78	1.3%
Seizure	1/78	1.3%
Drug overdose	26/170	15.3%
Polysubstance abuse or dependence ^d	13/26	50.0%
Opioid poisoning ^e	18/26	69.2%
Cocaine poisoning	12/26	46.2%
Alcohol poisoning	5/26	19.2%
Cardiovascular disease	4/26	15.4%
Poisoning from unspecified substances	3/26	11.5%
Benzodiazepine poisoning	1/26	3.9%
Methadone poisoning	1/26	3.9%
HIV	1/26	3.9%
Lung disease other than malignancy	1/26	3.9%
Liver disease, failure, and/or viral hepatitis	17/170	10.0%
Liver disease or failure, general	14/17	82.4%
Chronic Hepatitis C	7/17	41.2%
Hepatocellular carcinoma	5/17	29.4%
HIV	4/17	23.5%
Hemorrhage (gastrointestinal), hyperkalemia, and/or coagulation defect	4/17	23.5%
Diabetes	2/17	11.8%
Kidney disease or failure	2/17	11.8%
Respiratory failure	2/17	11.8%
Septicemia	2/17	11.8%
Cardiac arrest	1/17	5.9%
Cardiovascular disease	1/17	5.9%
Polysubstance abuse or dependence	1/17	5.9%
Acute Hepatitis B	1/17	5.9%
Pneumonia	1/17	5.9%
Cardiovascular disease	16/170	9.4%
Heart disease ^f	11/16	68.8%
Cardiac arrest	7/16	43.8%
Liver disease, failure, and/or viral hepatitis ^g	3/16	18.8%
Aortic dissection	2/16	12.5%
HIV	2/16	12.5%
Wasting	2/16	12.5%
Endocarditis	1/16	6.3%
Cardiogenic shock	1/16	6.3%
Stroke/pulmonary embolism	1/16	6.3%
Diabetes	1/16	6.3%
Lung disease (other than malignancy)	1/16	6.3%

Malignancy (other)	1/16	6.3%
Tobacco abuse or dependence	1/16	6.3%
Accidental injury, suicide, or homicide	13/170	7.6%
Homicide	5/13	38.5%
Accidental injury	4/13	30.8%
Exposure (hypothermia)	2/13	15.4%
Suicide	2/13	15.4%
Cocaine poisoning	1/13	7.7%
Alcohol abuse or dependence	1/13	7.7%
Other primary cause of death ^h	20/170	11.8%
Kidney disease or failure	6/20	30.0%
Cardiac arrest	6/20	30.0%
Malignancy, non-AIDS-related	4/20	20.0%
Diabetes	4/20	20.0%
Cardiovascular disease	3/20	15.0%
Lung disease, other than malignancy	3/20	15.0%
Respiratory failure	3/20	15.0%
Endocarditis	2/20	10.0%
Tobacco abuse or dependence	2/20	10.0%
HIV	2/20	10.0%
Liver disease or failure, general	1/20	5.0%
Seizure	1/20	5.0%
Tuberculosis	1/20	5.0%

^a Categories for secondary causes of death are not mutually exclusive and should not be expected to sum to 100%

^b Includes deaths from: septicemia (16), pneumonia or pneumonitis (7), unspecified bacterial infection AIDS-related (7), non-Hodgkins lymphoma (6), malignancy AIDS-related (4), cryptococcus (3), progressive multifocal leukoencephalopathy (3), candidiasis (2), mycobacteria (2), unspecified infection AIDS-related (2), aspergillosis (1), pneumocystosis (1), mycosis (1), herpes (1), Kaposi's sarcoma (1)

^c Includes deaths from: general liver disease or failure (18), chronic Hepatitis C (21), acute Hepatitis B (1), hepatocellular carcinoma (1), alcohol-related cirrhosis (1), hepatorenal syndrome (1)

^d Includes deaths from: cocaine (10), heroin (5), other opioids (6), alcohol (2)

^e Includes deaths from: heroin (11), other opioids (11)

^f Includes deaths from: myocardial infarction, congestive heart failure, hypertension

^g Includes deaths from one case of chronic Hepatitis C virus.

^h Each with <5 deaths in each category, includes deaths from: diabetes (4), malignancy (4), endocarditis (2), respiratory failure (2), kidney disease or failure (2), lung disease (2), gastrointestinal complications (hemoperitoneum, gallbladder disease; 2), unspecified (2)

Supplementary Table 3. Characteristics of all 1,350 individuals and their incarceration experiences, stratified based on the frequency of transitional case management (TCM) services provided during follow-up^a

	0 visits/year n=620 (45.9%)	>0-2 visits/year n=233 (17.3%)	3-4 visits/year n=146 (10.8%)	≥5 visits/year n=351 (14.7%)	p-value
Death from any cause					
No	512 (82.6%)	213 (91.4%)	132 (90.4%)	309 (88.0%)	0.002
Yes	108 (17.4%)	20 (8.6%)	14 (9.6%)	42 (12.0%)	
Predisposing factors					
Age at time of index release					
18-29	51 (8.2%)	19 (8.2%)	15 (10.3%)	29 (8.3%)	0.03
30-39	106 (17.1%)	44 (18.9%)	39 (26.7%)	64 (18.2%)	
40-49	277 (44.7%)	99 (42.5%)	60 (41.1%)	181 (51.6%)	
≥ 50	186 (30.0%)	71 (30.5%)	32 (21.9%)	77 (21.9%)	
Gender^b					
Female	163 (26.3%)	42 (18.0%)	28 (19.2%)	74 (21.1%)	0.03
Male	457 (73.7%)	191 (82.0%)	118 (80.8%)	277 (78.9%)	
Race/Ethnicity					
White	124 (20.0%)	45 (19.3%)	24 (16.4%)	57 (16.2%)	0.73
Black	251 (40.5%)	94 (40.3%)	66 (45.2%)	146 (41.6%)	
Hispanic	218 (35.2%)	86 (36.9%)	53 (36.3%)	138 (39.3%)	
Other	27 (4.4%)	8 (3.4%)	3 (2.1%)	10 (2.9%)	
Education level					
< High school	285 (46.0%)	90 (38.6%)	57 (39.0%)	178 (50.7%)	0.01
≥ High school	335 (54.0%)	143 (61.4%)	89 (61.0%)	173 (49.3%)	
Marital status^c					
Not married	481 (82.1%)	182 (81.6%)	117 (84.2%)	306 (89.7%)	0.01
Married	105 (17.9%)	41 (18.4%)	22 (15.8%)	35 (10.3%)	
Injection drug use-related HIV transmission					
No	184 (29.7%)	68 (29.2%)	51 (34.9%)	104 (29.6%)	0.62
Yes	436 (70.3%)	165 (70.8%)	95 (65.1%)	247 (70.4%)	
CD4 count at time of diagnosis^d					
≥ 500 cells/mL	166 (27.3%)	63 (27.3%)	39 (26.7%)	90 (25.6%)	0.35
200-499 cells/mL	326 (53.5%)	120 (52.0%)	90 (61.6%)	197 (56.1%)	
< 200 cells/mL	117 (19.2%)	48 (20.8%)	17 (11.6%)	64 (18.2%)	
Years since HIV diagnosis at time of index release					
Median (interquartile range)	11.4 (5.6-17.1)	11.5 (5.8-16.8)	9.8 (4.0-16.4)	11.7 (5.6-17.3)	0.24
HIV diagnosed during last incarceration					
No	600 (96.8%)	222 (95.3%)	133 (91.1%)	327 (93.2%)	0.01
Yes	20 (3.2%)	11 (4.7%)	13 (8.9%)	24 (6.8%)	
Enabling or disabling factors					
Length of index incarceration					
≤ 30 days	274 (44.2%)	62 (26.6%)	30 (20.6%)	88 (25.1%)	<0.0001
31-364 days	284 (45.8%)	120 (51.5%)	93 (63.7%)	200 (57.0%)	
≥ 365 days	62 (10.0%)	51 (21.9%)	23 (15.8%)	63 (18.0%)	
Conditions of index release					
Unconditional	136 (21.9%)	65 (27.9%)	42 (28.8%)	108 (30.8%)	0.001
Conditional	357 (57.6%)	138 (59.2%)	90 (61.6%)	198 (56.4%)	
Bonded	127 (20.5%)	30 (12.9%)	14 (9.6%)	45 (12.8%)	
Year of index release					
2007-2008	257 (41.5%)	134 (57.5%)	63 (43.2%)	141 (40.2%)	<0.0001
2009-2010	177 (28.6%)	60 (25.8%)	56 (38.4%)	95 (27.1%)	
2011-2012	101 (16.3%)	31 (13.3%)	19 (13.0%)	60 (17.1%)	
2013-2014	85 (13.7%)	8 (3.4%)	8 (5.5%)	55 (15.7%)	
Health insurance during follow-up					
Consistently uninsured	269 (38.0%)	35 (28.6%)	24 (16.4%)	37 (10.5%)	<0.0001
Consistently insured	314 (56.8%)	126 (56.5%)	52 (35.6%)	145 (41.3%)	
Intermittently insured	37 (5.2%)	72 (15.0%)	70 (48.0%)	169 (48.2%)	
Linked to care within 14 days after index release					
No	509 (82.1%)	183 (78.5%)	117 (80.1%)	267 (76.1%)	0.15
Yes	111 (17.9%)	50 (21.5%)	29 (19.9%)	84 (23.9%)	

Transitional case management during index release					
No	613 (98.9%)	125 (53.7%)	97 (66.4%)	175 (49.9%)	<0.0001
Yes	7 (1.1%)	108 (46.4%)	49 (33.6%)	176 (50.1%)	
Re-incarceration rate					
Median (interquartile range)	0.00 (0.0-28)	0.19 (0.0-42)	0.37 (0.22-0.59)	0.51 (0.16-0.86)	<0.001
Re-incarcerated for ≥365 days					
No	562 (90.7%)	186 (79.8%)	98 (67.1%)	246 (70.1%)	<0.0001
Yes	58 (9.4%)	47 (20.2%)	48 (32.9%)	105 (29.9%)	
Percentage of total follow-up time spent re-incarcerated					
0-1%	398 (64.2%)	94 (40.3%)	23 (15.8%)	90 (25.6%)	<0.0001
2-10%	98 (15.8%)	55 (23.6%)	37 (25.3%)	35 (10.0%)	
11-25%	55 (8.9%)	32 (13.7%)	33 (22.6%)	76 (21.7%)	
26-50%	43 (6.9%)	36 (15.5%)	40 (27.4%)	100 (28.5%)	
51-100%	26 (4.2%)	16 (6.9%)	13 (8.9%)	50 (14.3%)	
Length of last incarceration					
≤ 30 days	227 (36.6%)	44 (18.9%)	16 (11.0%)	60 (17.1%)	<0.0001
31-364 days	315 (50.8%)	132 (56.7%)	96 (65.8%)	226 (64.4%)	
≥ 365 days	78 (12.6%)	57 (24.5%)	34 (23.3%)	65 (18.5%)	
Conditions of last incarceration					
Unconditional	43 (6.9%)	33 (14.2%)	24 (16.4%)	60 (17.1%)	<0.0001
Conditional	121 (19.5%)	54 (23.2%)	42 (28.8%)	74 (21.1%)	
Bonded	372 (60.0%)	128 (54.9%)	74 (50.7%)	196 (55.8%)	
Re-incarcerated	84 (13.6%)	18 (7.7%)	6 (4.1%)	21 (6.0%)	
Need factors					
Prescribed ART during index incarceration					
No	310 (50.0%)	93 (39.9%)	65 (44.5%)	122 (34.8%)	<0.0001
Yes	310 (50.0%)	140 (60.1%)	81 (55.5%)	229 (65.2%)	
Virally suppressed prior to index release					
No/viral level not reported	256 (41.3%)	105 (45.1%)	77 (52.7%)	150 (42.7%)	0.003
Yes	188 (30.3%)	84 (36.1%)	39 (26.7%)	131 (37.3%)	
Viral load not drawn prior to release	176 (28.4%)	44 (18.9%)	30 (20.6%)	70 (19.9%)	
Number of medical co-morbidities during index incarceration					
0	405 (65.3%)	138 (59.2%)	94 (64.4%)	201 (57.3%)	0.24
1	122 (19.7%)	53 (22.8%)	29 (19.9%)	90 (25.6%)	
≥ 2	93 (15.0%)	42 (18.0%)	23 (15.8%)	60 (17.1%)	
Psychiatric need during index incarceration					
Low severity score, untreated	314 (50.7%)	118 (50.6%)	73 (50.0%)	145 (41.3%)	0.16
Low severity score, treated	119 (19.2%)	38 (16.3%)	30 (20.6%)	69 (19.7%)	
High severity score, untreated	26 (4.2%)	7 (3.0%)	6 (4.1%)	19 (5.4%)	
High severity score, treated	161 (26.0%)	70 (30.0%)	37 (25.3%)	118 (33.6%)	
Addiction severity score during index incarceration^e					
Low severity/no disorder (score 1-2)	93 (15.4%)	44 (19.3%)	26 (17.9%)	57 (16.6%)	0.75
Moderate severity disorder (score 3)	391 (64.8%)	146 (64.0%)	95 (65.5%)	229 (66.6%)	
Serious disorder (score 4-5)	119 (19.7%)	38 (16.7%)	24 (16.6%)	58 (16.9%)	
Treated for an opioid use disorder during index incarceration					
No	614 (99.0%)	232 (99.6%)	146 (100%)	349 (99.4%)	0.77
Yes	6 (1.0%)	1 (0.4%)	0 (0%)	2 (0.6%)	

Percentage of all re-incarcerations during which ART was prescribed					
Never re-incarcerated	357 (57.6%)	79 (33.9%)	22 (15.1%)	77 (21.9%)	<0.0001
0-10%	73 (11.8%)	23 (9.9%)	13 (8.9%)	19 (5.4%)	
11-50%	31 (5.0%)	21 (9.0%)	18 (12.3%)	27 (7.7%)	
51-90%	20 (3.2%)	14 (6.0%)	21 (14.4%)	46 (13.1%)	
91-100%	139 (22.4%)	96 (41.2%)	72 (49.3%)	182 (51.9%)	
Percentage of all re-incarcerations that ended in viral suppression					
Never re-incarcerated	357 (57.6%)	79 (33.9%)	22 (15.1%)	77 (21.9%)	<0.0001
0-24%	123 (19.8%)	63 (27.0%)	40 (27.4%)	71 (20.2%)	
25-49%	14 (2.3%)	16 (6.9%)	15 (10.3%)	38 (10.8%)	
50-74%	37 (6.0%)	28 (12.0%)	34 (23.3%)	73 (20.8%)	
75-100%	89 (14.4%)	47 (20.2%)	35 (24.0%)	92 (26.2%)	
Percentage of all re-incarcerations with change from virologic failure to suppression					
Never re-incarcerated	357 (57.6%)	79 (33.9%)	22 (15.1%)	77 (21.9%)	<0.0001
0-24%	206 (33.2%)	110 (47.2%)	80 (54.8%)	195 (55.6%)	
25-49%	17 (2.7%)	11 (4.7%)	14 (9.6%)	37 (10.5%)	
50-74%	20 (3.2%)	19 (8.2%)	23 (15.8%)	24 (6.8%)	
75-100%	20 (3.2%)	14 (6.0%)	7 (4.8%)	18 (5.1%)	
Prescribed ART during last incarceration					
No	233 (37.6%)	49 (21.0%)	27 (18.5%)	48 (13.7%)	<0.0001
Yes	387 (62.4%)	184 (79.0%)	119 (81.5%)	303 (86.3%)	
Virally suppressed within 90 days prior to release from last incarceration					
No/viral level not reported	222 (35.8%)	74 (31.8%)	42 (28.8%)	73 (20.8%)	<0.0001
Yes	257 (41.5%)	111 (47.6%)	75 (51.4%)	210 (59.8%)	
Viral load not drawn prior to release	141 (22.7%)	48 (20.6%)	29 (19.9%)	68 (19.4%)	
Viral suppression status during last incarceration					
Never virally suppressed	216 (34.8%)	68 (29.2%)	45 (30.8%)	69 (19.7%)	<0.0001
Failure, then suppression	90 (14.5%)	54 (23.2%)	36 (24.7%)	80 (22.8%)	
Suppression, then failure	14 (2.3%)	11 (4.7%)	4 (2.7%)	9 (2.6%)	
Consistent suppression	189 (30.5%)	78 (33.5%)	55 (37.7%)	163 (46.4%)	
Viral load never drawn	111 (17.9%)	22 (9.4%)	6 (4.1%)	30 (8.6%)	
Number of medical comorbidities during last incarceration					
0	348 (56.1%)	95 (40.8%)	60 (41.1%)	150 (42.7%)	<0.0001
1	136 (21.9%)	63 (27.0%)	39 (26.7%)	102 (29.1%)	
≥ 2	136 (21.9%)	75 (32.2%)	47 (32.2%)	99 (28.2%)	
Psychiatric need during last incarceration					
Low severity score, untreated	292 (47.1%)	102 (43.8%)	64 (43.8%)	131 (37.3%)	0.03
Low severity score, treated	102 (16.5%)	27 (11.6%)	15 (10.3%)	55 (15.7%)	
High severity score, untreated	41 (6.6%)	19 (8.2%)	13 (8.9%)	26 (7.4%)	
High severity score, treated	185 (29.8%)	85 (36.5%)	54 (37.0%)	139 (39.6%)	
Addiction severity score during last incarceration^f					
Low severity/no disorder (score 1-2)	72 (11.8%)	18 (7.8%)	12 (8.2%)	20 (5.8%)	0.045
Moderate severity					

disorder (score 3)	412 (67.7%)	168 (72.7%)	102 (69.9%)	263 (76.0%)	
Serious disorder (score 4-5)	125 (20.5%)	45 (19.5%)	32 (21.9%)	63 (18.2%)	
Treated for an opioid use disorder during last incarceration					
No	614 (99.0%)	231 (99.1%)	142 (97.3%)	335 (95.4%)	0.002
Yes	6 (1.0%)	2 (0.9%)	4 (2.7%)	16 (4.6%)	
Viral suppression and timing of last viral load drawn prior to death/censor					
Viral suppression, within 6 months	339 (54.7%)	158 (67.8%)	96 (65.8%)	247 (70.4%)	<0.0001
Virologic failure, within 6 months	107 (17.3%)	26 (11.2%)	19 (13.0%)	56 (16.0%)	
Viral suppression, >6 months	81 (13.1%)	33 (14.2%)	16 (11.0%)	30 (8.6%)	
Virologic failure, >6 months	50 (8.1%)	12 (5.2%)	14 (9.6%)	11 (3.1%)	
Viral load never drawn	43 (6.9%)	4 (1.7%)	1 (0.7%)	7 (2.0%)	

^a Total sample n=1350 individuals. For categorical variables, numbers listed are column n (%) and *p*-values are generated from chi-squared tests or, for tables with at least one cell n<5, fisher's exact tests generated using Monte Carlo estimations based on n=20,000 randomly chosen tables. For variables modeled as continuous, numbers listed are median (interquartile range) and *p*-values are generated from Kruskal-Wallis tests. Percentages may not sum to 100% due to rounding.

^b Incarceration periods for transgender males (n=1) and transgender females (n=3) have been included in the male and female categories, respectively.

^c Marital status was not reported for 61 individuals.

^d CD4 count at time of HIV diagnosis was unavailable for 13 individuals.

^e Addiction severity score was not assessed and thus unavailable for 30 individuals' index incarceration periods.

^f Addiction severity score was not assessed and thus unavailable for 18 individuals' last incarceration periods.