

Electronic Supplementary Material

Tumor Formation of Adult Stem Cell Transplants in Rodent Arthritic Joints

Journal: Molecular Imaging and Biology

Fanny Chapelin, MS^{1*}, Aman Khurana, MD^{*}, Mohammad Moneeb, MS¹, Florette K. Gray Hazard, MD², Chun Fai (Ray) Chan, PhD³, Hossein Nejadnik, MD, PhD¹, Dita Gratzinger, MD, PhD², Solomon Messing⁴, PhD, Jason Erdmann, BS⁵, Amitabh Gaur, PhD³, Heike E Daldrup-Link, MD, PhD^{1#}

¹ Department of Radiology, Molecular Imaging Program at Stanford (MIPS), Stanford University, Stanford, CA, USA

² Department of Pathology, Stanford University, Stanford, CA, USA

³ BD biosciences, Custom Technology Team, La Jolla, CA, USA

⁴ Department of Communication and Statistics, Stanford, CA, USA

⁵ Department of Cytogenetics, Stanford University, Stanford, CA, USA

* Authors contributed equally.

#Corresponding author:

Heike E Daldrup-Link M.D. PhD, Associate Professor, Department of Radiology, Molecular Imaging Program at Stanford (MIPS), Stanford School of Medicine

725 Welch Rd, Rm 1665, Stanford, CA 94305-5654

Ph: (650) 723-8996, Fax : (650) 725-8957, Email: H.E.Daldrup-Link@stanford.edu

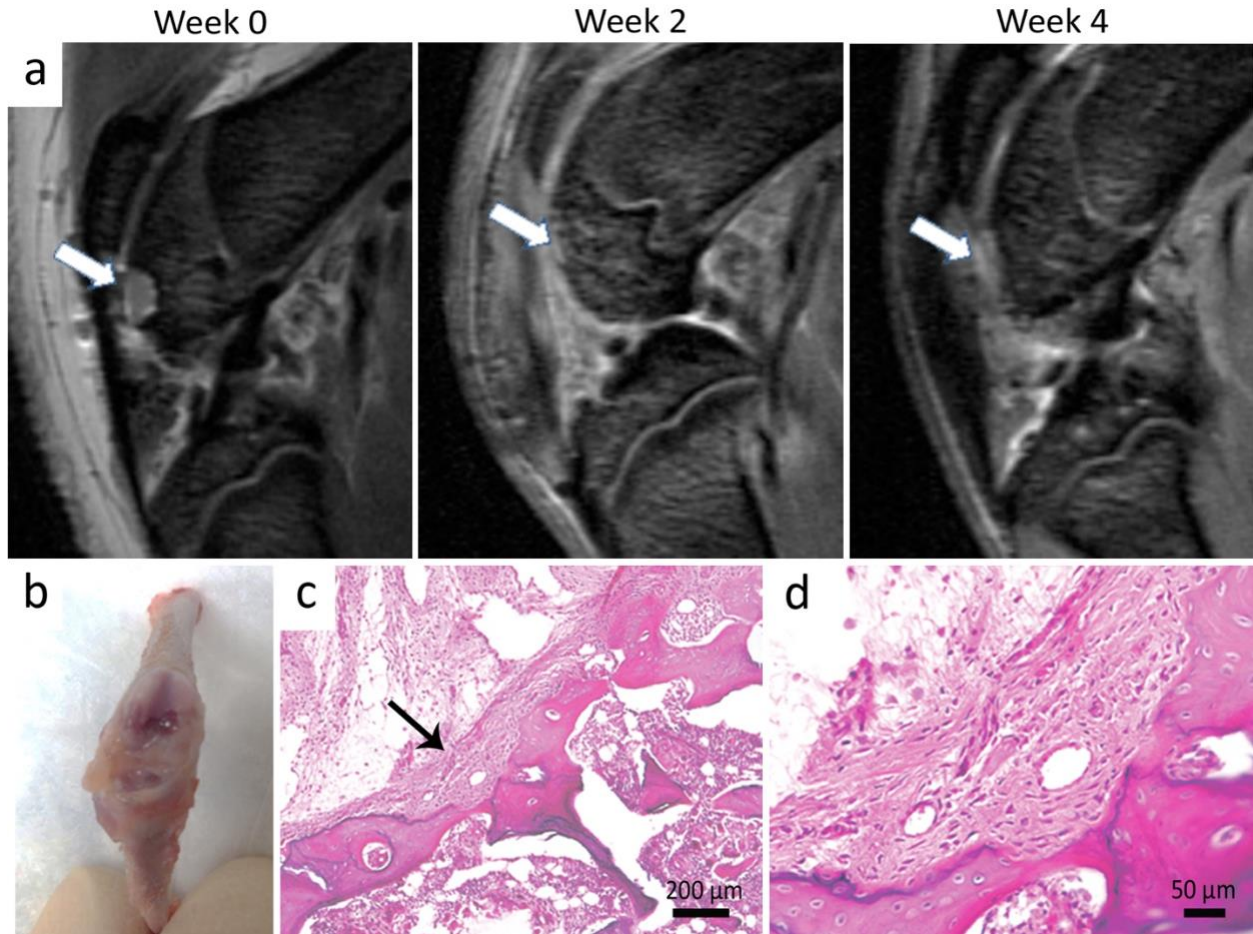


Figure S1. Findings in immunocompetent animals. **a** Sagittal T2-weighted FSE images (TR/TE = 3000ms/30ms) of ADSC transplants in cartilage defects of the distal femurs which did not exhibit significant size change over 4 weeks. **b.** ADSC implants do not extend beyond the transplant site in immunocompetent recipients. H&E stains (**c:** 40X; and **d:** 400X) exhibit a well-defined cell implant differentiating into hyaline cartilage and surrounded by unremarkable native bone.