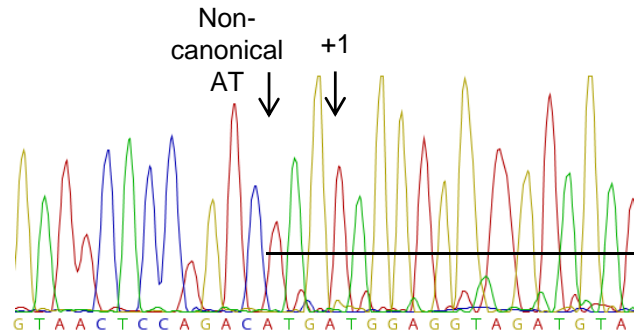


Supplemental Fig. S5

Individual F42G2.26



RLP5: ENST00000370321.8

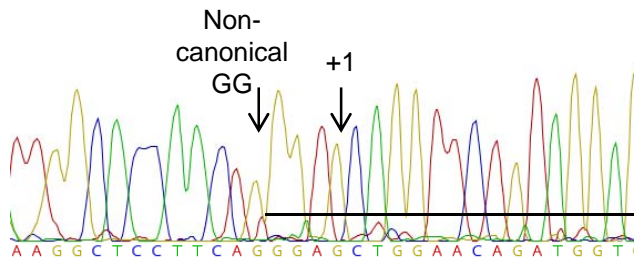
Exon 6:

GTTGCAGATTACATGCGCTACTTAATGGAAGAAGATGAAGATGCTTACAAGAAA
 CAGTTCTCTCAATACATAAAGAACAGCGTAACTCCAGACatGgt

Exon 7:

ATGGAGGAGATGTATAAGAAAGCTCATGCTGCTATACGAGAGAATCCAGTCTA
TGAAAAGAAGCCAAGAAAGAAGT

Individual F43G2.4



IKZF5: ENST00000368886.9

Exon 3:

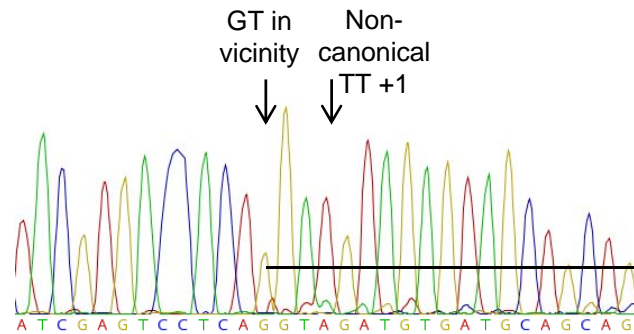
CAGACCCATCACGTGAACATGATTTCTGGATCAGTTAGTGGGGACAAAGAAGC
 AGAGGCTCTTCAGGGAGgtaga

Exon 4:

CTGGAACAGATGGTGATCAAATGGACTTGATCACCCATCTGTTGAAGTTTCCT
TGGATGAAAACCTCAGGAATGTTAGTAGA

Supplemental Fig. S5

Individual F45G2.10



DDX46: ENST00000452510.6

Exon 19:

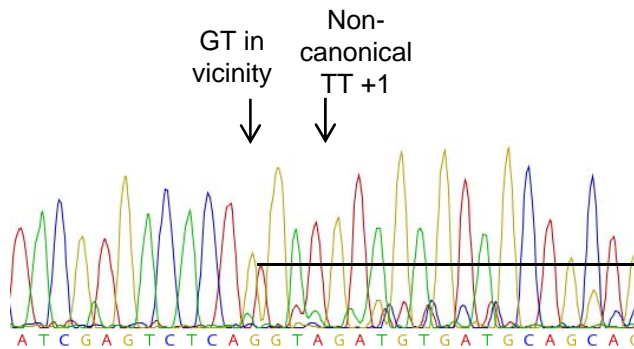
GCTCCAACTGCAGGAAATGCTGAGAAATTAGAAATTGCTAAGAGATTGGCTCTTA

GAATCAATGCCAGAAGAATTTGGGCATCGAGTCTCAGGTAttaagtaa

Exon 20:

GATGTGATGCAGCAGGCCACCAATGCAATTCTTAGGGGTGGCACCATTCTGGCTC

Individual F45G2.28



DDX46: ENST00000452510.6

Exon 19:

GCTCCAACTGCAGGAAATGCTGAGAAATTAGAAATTGCTAAGAGATTGGCTCTTA

GAATCAATGCCAGAAGAATTTGGGCATCGAGTCTCAGGTAttaagtaa

Exon 20:

GATGTGATGCAGCAGGCCACCAATGCAATTCTTAGGGGTGGCACCATTCTGGCTC

Supplemental Figure S5: Exemplary sequences of 5'ss pairs from four individuals. RNA was isolated from 2×10^6 fibroblasts from four different individuals. RT-PCRs were run with primers that amplify exon junctions with non-canonical splice donors found by RNA-seq data analysis. Samples were run on a 10% PAA gel and the respective bands were excised and purified before sequencing.