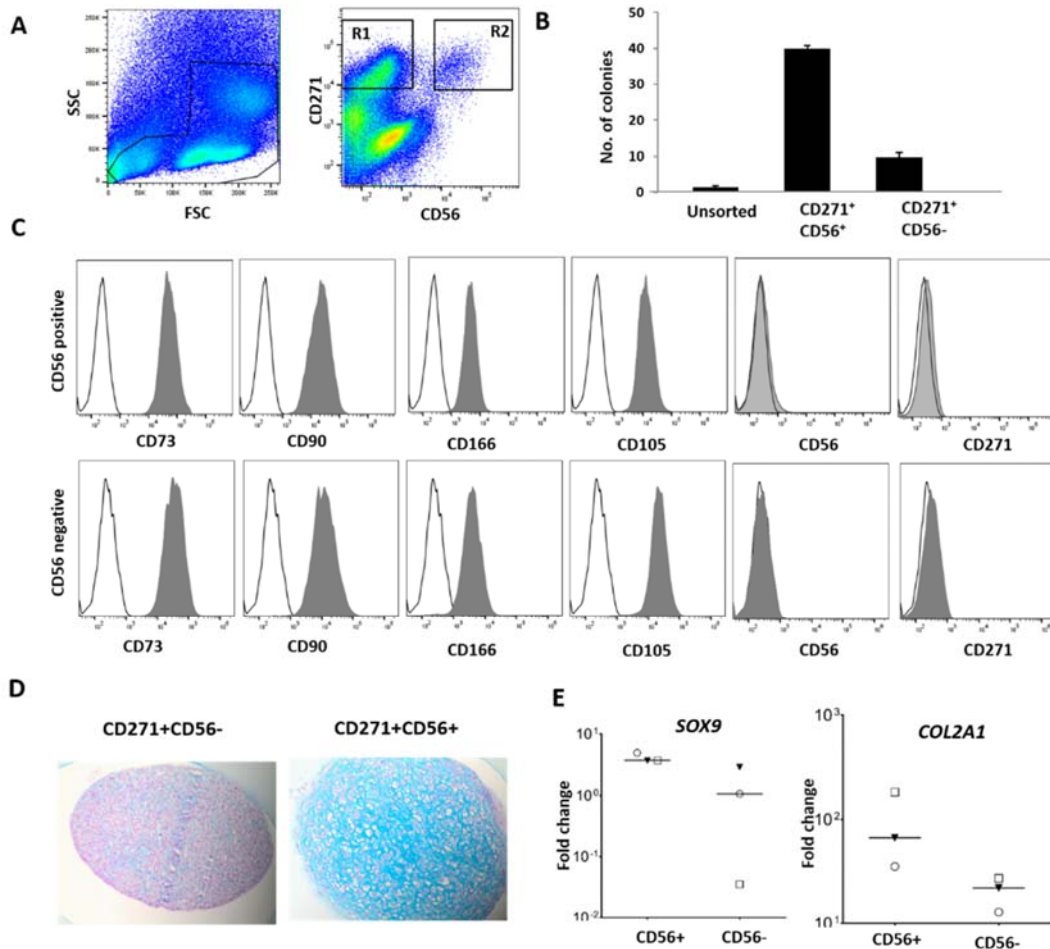


Appendix Table A1. Comparison of freshly isolated nucleated cells from aspirated bone marrow and bone marrow obtained after rasping

Donor	Total no. of nucleated cells per ml		% of CD45- (CD45+) cells		Total no. of CD271+CD56+ cells per ml		Total no. of CD271+CD56- cells per ml	
	Aspirate	Rasp	Aspirate	Rasp	Aspirate	Rasp	Aspirate	Rasp
1	0.13 x 10 ⁷	0.7 x 10 ⁷	11.4 (88.6)	11.0 (89)	26.7	233.3	46.7	1750.0
2	0.23 x 10 ⁷	0.6 x 10 ⁷	16.0 (84)	9.5 (90.5)	7.0	300.0	396.7	6100.0
3	0.4 x 10 ⁷	0.8 x 10 ⁷	9.0 (91)	13.4 (86.6)	0.0	266.7	400.0	2266.7
4	0.4 x 10 ⁷	0.3 x 10 ⁷	13.0 (87)	18.2 (81.8)	36.0	200.0	600.0	1450.0
5	0.26 x 10 ⁷	0.9 x 10 ⁷	5.3 (94.7)	16.0 (84)	8.0	120.0	106.7	3000.0
6	0.23 x 10 ⁷	0.7 x 10 ⁷	80.0*	60.0*	4.7	466.7	513.3	1400.0
Median	0.4 x 10 ⁷	0.7 x 10 ⁷	11.4 (88.6)	13.4 (86.6)	8	250	398	2008

* Contamination with RBCs



Supplementary Figure 1: Enumeration of MSCs derived from FACS sorted CD271+CD56+ and CD271+CD56- CTPs. A) Display of BM cells stained with CD271 and CD56. Sort windows R1 and R2 were set as indicated. B) Display of CFU-F numbers derived from 2000 FACS sorted or 100000 unfractionated BM cells. C) Expression of selected markers in Passage 3 on cultured MSCs derived from CD271+CD56- and CD271+CD56+ CTPs. D) Passage 2 expanded MSCs were induced for chondrogenic differentiation and after 28 days the pellets were stained with Alcian blue. E) Expression of chondrogenic markers *SOX9* and *COL2A1* in cultures derived from CD271+CD56+ and CD271+CD56- sorted fractions after 21 days of chondrogenic induction quantified by qPCR. Gene expression was normalised to HPRT1 and results expressed as mean \pm SD (n=3).