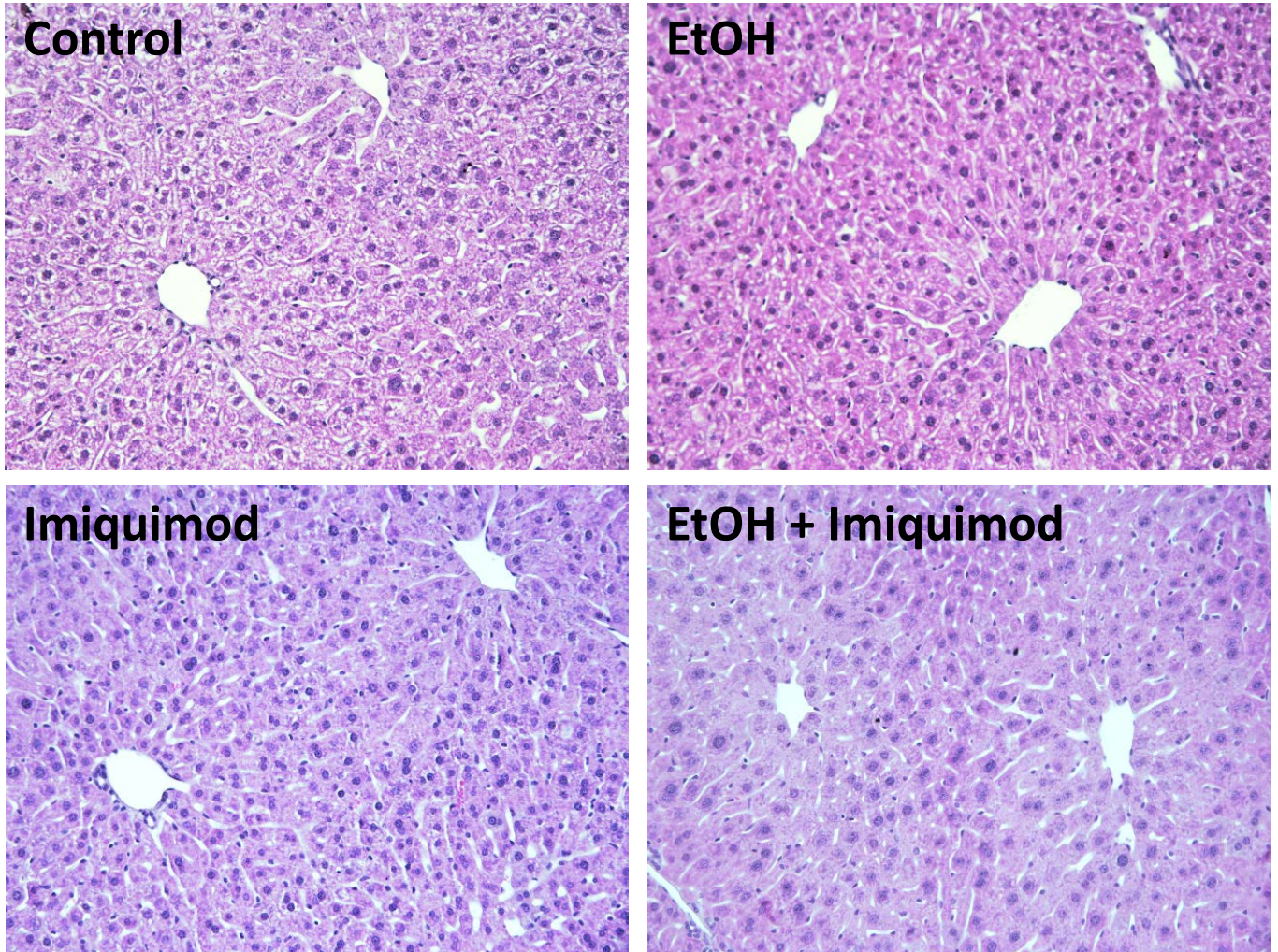


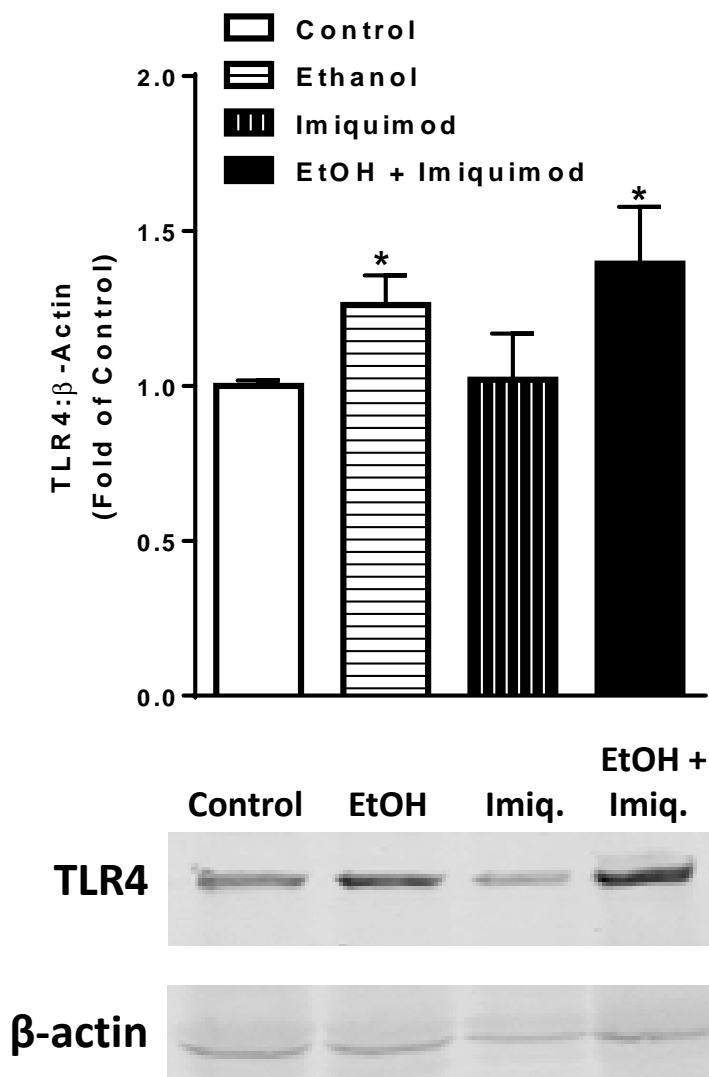
Supplemental Figure 1

H&E staining



Supplemental Figure 1. Effect of ethanol and imiquimod exposure on liver morphology in mice. Male C57Bl6/J mice were exposed to ethanol (5 g/kg; i.g.) for 10 days. 24 hours after the last ethanol dose, some mice were exposed to the TLR7 agonist imiquimod (2.5 mg/kg i.p.) as described in *Materials and Methods*. Liver tissue was collected 2 h after imiquimod (or saline) administration. Formalin-foxed, paraffin embedded sections were cut at 5 μ m and mounted on glass slides. Sections were deparaffinized and stained with hematoxylin and eosin (H&E). Representative photomicrographs (original magnification, 200x) are shown.

Supplemental Figure 2



Supplemental Figure 2. Effect of ethanol and imiquimod exposure on liver TLR4 protein expression in mice. Male C57Bl6/J mice were exposed to ethanol (5 g/kg; i.g.) for 10 days. 24 hours after the last ethanol dose, some mice were exposed to the TLR7 agonist imiquimod (2.5 mg/kg i.p.) as described in *Materials and Methods*. Liver tissue was collected 2 h after imiquimod (or saline) administration. Western blot was performed as described in *Materials and Methods*. Quantitative data are shown as fold of control. * $p < 0.05$ compared to control.