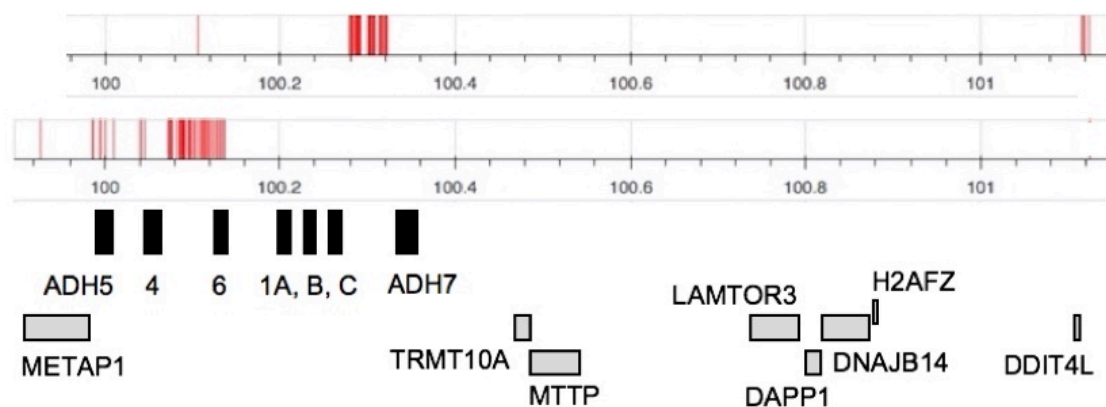


Supplemental Figure 1
Location of eQTLs for *ADH1B* in adipose tissues.



Positions of significant eQTLs for *ADH1B* in adipose tissue, from GTEx version 7 {GTEx Consortium, 2013 #9277}. Top line: Subcutaneous adipose, with position on human genome build GRCh37/hg19; next, Visceral adipose; bottom, Gene map.