

Supplementary Table S1: Sequence and product size of the primers used in Real Time PCR, cloning and chromatin immunoprecipitation experiments

FP: Forward primer, RP: Reverse primer, prom: CD14 promoter containing rs5744454 for ChIP assay

Oligo Name	Oligonucleotide (5'-3') sequences	Product size
Primers for quantitative PCR		
CD14	FP:AACTCCCTCAATCTGTCGTTTCG RP:TCCAGTGTCAGGTTATCCACCT	146 bp
PIK3CB	FP:GTAATCGGAGGATAGGGCAGTT RP:TGGCTCTGTTAACTTCACGGC	213 bp
RELA	FP:CCTTTTCGCAAGCTGATGTGCA RP:CTGGCAGGTACTGGAATTCCAT	159 bp
TRAM	FP:AAGAGAAGCTCAAGGCCGAA RP:TTGGCCCCTCTGTTGTATTGC	164 bp
TLR8	FP:GTCGACTACAGGAAGTTCCCC RP:GGGTAAGTGGTTGTCTTCAAGCA	260 bp
CD86	FP:CCCAGACCACATTCCTTGGATT RP:TCTGTTCACTCTCTTCCCTCTC	158 bp
SP1	FP:AGGTGGAGAGGAAGGAGAAAAC RP:TACACTTCCCACAGCCTTGGATG	171 bp
HLF	FP:CATCCCTGGCCAGGAAATGTTT RP:ATCTGGTTCTCTTTCAGCCTCC	201 bp
Irf1	FP:TCATGAAGCTCTTGGAGCAGTC RP:CGCTGTAGACTCAGCCCAATAT	169 bp
ACTB	FP:GCGGGAAATCGTGCGTGACATT RP:GATGGAGTTGAAGGTAGTTTCGTG	232 bp
Primers for genotyping		
rs2569191 and rs5744454	FP:GGGCTGTTGTAAATGCGTAGCT RP:TGTGAACCTCATCTGTTGGCAC	768 bp
rs2569190	FP:CTAAGGCACTGAGGATCATCCT RP:TCCTGGGATGTCATTTCAGTTCC	278 bp
Primers for promoter cloning		
CD14_rs5744454_cloning	FP:GAGGGTACCACTTGGCCAATGTGTCTCT RP:ATCCTCGAGTCCTGCCACCAAATCCAAG	560 bp
Primers for chromatin immune precipitation assay		
ChIP_SP1_CD14prom	FP:GCTCACGCCTGTAATCCCA RP:GTAGCTGGGATTACAAGTGC	159 bp
SP1_positive	FP:AACCCTAGATGCCCTGCAGAATC RP:GGATGTCATTTCAGTTCCCTCCT	154bp
SP1_negative	FP:TCCACCCAAACTGTATTTTCAGAC RP:TGCCCTTAGGTCTCCAGTTT	146 bp

Supplementary Table S2a: Genes differentially regulated between *P. falciparum* (F) versus *P. vivax* (V) infection.

Genes up regulated in <i>P.falciparum</i> (F)	FC>2	P value	FDR corrected P value
AASDHPPT	2.061936638	3.00E-05	0.023374
ABCC4	2.626242251	0.00015	0.023532
ABHD3	2.279946545	0.00292	0.047867
ACAP2	3.789480282	0.00018	0.023374
ACRBP	6.597868389	0.00101	0.030786
ADAT1	2.302178983	3.00E-05	0.023374
AGPAT1	4.493999612	0.00205	0.04126
AGTRAP	3.794737261	0.00092	0.029752
ALDH1A1	2.650014034	6.00E-05	0.023374
ANKRD9	2.056227653	0.00077	0.028967
AP3S1	2.62988552	0.00156	0.036377
APOBEC3F	2.909961367	0.00131	0.034403
APP	4.707626949	0.00043	0.025216
ARHGEF11	2.414961183	0.00306	0.048798
ARL6IP6	2.295804828	0.00054	0.026266
ARMCX6	3.885229982	0.00132	0.034642
ARPC3	3.184352395	8.00E-04	0.028967
ASAH1	2.228387302	0.00158	0.036576
ASAP1	2.219138944	0.0029	0.047723
ASB8	2.033549347	0.00012	0.023374
ATG3	2.103803558	0.00288	0.047723
ATP5F1	4.193049902	0.00316	0.049436
ATP6V0C	4.392371255	0.00137	0.034951
ATP6V0E1	2.899893666	6.00E-04	0.026926
BCL2L1	2.229932437	0.00094	0.030288
BID	2.716972569	0.00227	0.043208
BNIP3L	3.328794939	0.00281	0.047301
BRSK1	3.244508622	0.0027	0.046297
BTN3A3	2.406606052	0.00135	0.034785
C10orf26	3.38228915	0.00052	0.02609
C12orf76	4.365055508	0.0025	0.044589
C14orf43	2.370185542	0.0019	0.039601
C17orf60	2.834314793	0.00043	0.025216
C17orf95	2.069095163	0.00222	0.04258
C20orf55	2.060507907	0.00125	0.033977
C3orf38	2.865923301	0.00046	0.02529
C4orf18	5.230685394	8.00E-05	0.023374
C6orf211	2.20992897	0.00162	0.036999

CA2	3.525920632	1.00E-05	0.019709
CALD1	3.142690067	0.00291	0.04786
CANT1	2.276788058	0.00248	0.044589
CAT	2.528006197	0.00274	0.046613
CCDC97	2.308570835	0.00182	0.038962
CCNC	2.200757219	0.00059	0.026926
CCNDBP1	2.500124605	0.00067	0.027813
CCR2	2.202283196	0.00298	0.048416
CCRL2	2.236123702	0.00035	0.024123
CD14	2.857988279	0.00287	0.047714
CD302	6.320330495	0.00082	0.029004
CD36	2.011121161	0.00027	0.023374
CD44	6.993428963	0.00313	0.049224
CD46	2.469125214	7.00E-05	0.023374
CD86	5.684368173	0.00043	0.025216
CD9	2.751083636	0.00299	0.048447
CDC14B	3.179941004	0.00274	0.046679
CENTB2	3.262549973	0.00019	0.023374
CETP	2.852051435	0.00233	0.043643
CHMP1B	2.089271526	0.00071	0.028439
CHMP5	4.135322945	0.00262	0.045605
CHPF2	2.217601287	0.00072	0.028439
CHPT1	2.314980434	0.00073	0.028439
CIAO1	2.287861946	0.00023	0.023374
CLEC4A	2.930201749	0.00175	0.038415
CLINT1	3.002158195	0.00181	0.038962
CLIP4	2.032140286	0.00048	0.025473
CMTM5	5.41889991	0.00026	0.023374
CMTM6	2.995921869	0.00063	0.027271
CNBP	4.441355335	6.00E-05	0.023374
CNIH	3.368251814	0.00032	0.023374
CNOT7	3.74508899	0.00116	0.032776
COMT	2.430073584	0.00044	0.025216
CORO1B	3.73471978	0.00136	0.034916
CREG1	2.253238457	0.00028	0.023374
CRK	3.847709819	0.00043	0.025216
CRTAP	4.152557082	0.001	0.030762
CSF2RA	3.182145935	0.00039	0.024464
CTCF	2.095072254	0.00015	0.023374
CTR9	2.118436669	0.00065	0.02738
CTTN	4.863517133	1.00E-04	0.023374

CUTL1	2.237674202	0.00248	0.044589
CXCL5	2.167451934	0.00027	0.023374
CYB5R3	4.198866734	1.00E-04	0.023374
CYB5R4	2.246999806	0.00052	0.026106
CYP27A1	2.950582914	0.00055	0.026379
DAPK1	2.528006197	0.0024	0.044176
DCK	2.637187229	0.00078	0.028967
DDX60	3.112340706	0.00038	0.024464
DICER1	2.832350876	0.00241	0.044176
DKFZp686I15217	2.435132037	0.00089	0.029516
DNAJB12	2.443586203	0.00229	0.043359
DNAJB6	4.28709385	4.00E-04	0.024464
DNASE1L1	4.890561111	2.00E-04	0.023374
DR1	2.191623533	0.00063	0.02734
DUSP22	2.993845974	0.00053	0.026243
DUSP6	3.815838202	0.00243	0.044346
DYNLRB1	3.441410522	0.00229	0.043266
EID2	2.661058082	0.00202	0.040926
EIF3J	2.153972752	0.00021	0.023374
EIF4E3	2.865923301	0.00202	0.040911
EIF4G2	2.196185628	0.00239	0.044026
ELMO2	2.142061646	0.00173	0.038018
ENG	3.789480282	0.00017	0.023374
EP300	4.245692836	0.00153	0.035993
ESD	2.208397694	0.00162	0.036901
EVI2A	2.122846418	0.00164	0.037081
EXOSC1	2.493202389	0.00045	0.02529
F13A1	7.115671948	1.00E-04	0.023374
FAM18B	2.463996147	0.00311	0.049008
FAM20C	3.354272738	0.00128	0.034046
FBXL5	4.588428097	0.00073	0.028439
FBXO7	2.084931522	0.00316	0.049464
FCGR2A	2.871889021	0.00012	0.023374
FHL3	3.50399326	0.00147	0.03551
FKSG30	7.200015438	0.00066	0.027485
FNTA	2.529759085	9.00E-04	0.029671
FPR1	3.660396673	0.00013	0.023374
FPR2	3.276146791	0.00038	0.024464
FRAT1	3.056753042	0.00046	0.02529
FTHL12	3.30351066	0.00025	0.023374
FXVD5	2.278366754	0.00086	0.029406

G3BP2	2.940374673	0.00257	0.045313
GALNT4	2.826467288	0.00222	0.04259
GAPT	3.010493495	0.00228	0.043266
GAS2L1	4.410676652	0.00103	0.031327
GFIIB	2.617156143	0.00144	0.035283
GIMAP2	2.148008943	0.00244	0.044393
GLRX2	2.295804828	0.00117	0.032839
GNA13	2.639015822	0.00142	0.035178
GNG10	4.343927425	0.00061	0.027069
GNG11	3.74508899	0.0029	0.047723
GNG2	3.592529492	0.00221	0.042555
GPSM3	2.535025044	0.00022	0.023374
GPX1	3.246758324	1.00E-06	0.010618
GPX4	4.737086447	0.0031	0.049008
GSTM1	4.041805786	0.00171	0.038015
GUCY1A3	3.168939244	9.00E-05	0.023374
H2AFY	4.036206535	0.00153	0.036018
HCCS	2.441893025	0.00164	0.03708
HIATL1	3.182145935	0.00204	0.041193
HIGD1A	2.125791349	0.00022	0.023374
HIST1H2AC	7.889861636	0.00304	0.04868
HIST1H2AG	2.791421528	0.00014	0.023374
HIST1H2BD	4.069918768	0.00235	0.043751
HIST1H2BJ	5.045509635	3.00E-05	0.023374
HIST1H2BK	6.783359717	7.00E-05	0.023374
HIST1H3H	6.435266968	5.00E-05	0.023374
HIST1H4H	3.080148697	0.00258	0.045389
HIST2H2AA3	9.259921736	7.00E-04	0.028212
HIST2H2AA4	3.138336392	0.00014	0.023374
HIST2H2BE	3.567714078	0.00178	0.038738
HIST2H4B	2.042024251	0.00111	0.032178
HK2	3.168939244	0.00141	0.035178
TNFAIP8L2	10.09801626	0.00161	0.036807
HLA-DRB6	3.879847641	0.0011	0.032178
HN1	2.688869988	0.00051	0.02609
HNRNPH2	4.500233939	0.00177	0.038686
HNRNPK	7.490177979	0.00011	0.023374
HNRPK	2.622604028	0.00046	0.025399
HOMER2	2.239225777	0.00056	0.02675
HPS3	2.237674202	0.00018	0.023374
HSD17B11	3.460546762	0.0025	0.044589

HVCN1	3.853047576	0.00084	0.029205
IDH1	2.314980434	0.00053	0.026243
IER5	3.600007719	0.00028	0.023374
IGFBP7	2.428389769	0.00084	0.029283
CX3CR1	4.694592713	0.00041	0.024823
IL8RBP	5.123039445	1.00E-05	0.019709
INF2	3.683302789	0.00025	0.023374
IRF2BP2	2.575763259	0.00103	0.031314
IRF8	2.294214048	0.00233	0.043643
ISCA1	2.716972569	0.00243	0.044346
ITGA2B	9.740528149	0.00012	0.023374
ITGB1	2.508804409	0.00099	0.030755
ITGB3	3.742493991	0.00031	0.023374
ITGB5	3.213175987	0.00013	0.023374
ITM2B	2.039195366	1.00E-04	0.023374
JAK1	3.417638964	0.00119	0.033069
JMJD1C	2.774061938	0.00044	0.025264
KEAP1	2.254800824	0.0019	0.039601
KIAA0261	2.470837274	0.00043	0.025216
KLHL6	2.069095163	0.00282	0.047308
LACTB	2.264197804	3.00E-05	0.023374
LAIR1	2.81864151	0.00188	0.039475
LCP2	2.071965527	3.00E-05	0.023374
LILRA1	2.540301965	0.00031	0.023374
LIMS1	3.110184144	0.00142	0.035178
LRRC8D	2.602683711	0.00288	0.047723
LYPLAL1	2.373473595	0.00056	0.026754
LYST	2.216064696	0.00221	0.042555
MBD2	2.059080167	8.00E-05	0.023374
MGLL	3.063115994	0.00306	0.048798
MGST1	2.67585511	0.00036	0.024199
MID1IP1	3.082284433	0.00026	0.023374
MIR1974	3.797368484	0.00099	0.030755
MIR1978	2.203810232	0.00063	0.027374
MLKL	2.145033234	0.00056	0.026777
MLL	2.642676811	0.00088	0.029497
MLX	3.142690067	0.00151	0.035829
MD1IP1	3.082284433	0.00213	0.041737
MNDA	3.805273105	0.00145	0.035338
MORF4L2	3.222097164	0.00024	0.023374
MRPS33	2.07915887	0.00163	0.036999

MS4A7	4.005549023	0.00123	0.033578
MSL3	2.039195366	0.00125	0.033792
MTMR12	2.20686748	0.00108	0.032053
MTPN	2.428389769	0.00122	0.033527
MTSS1	3.474968741	0.00145	0.035283
MYD88	2.406606052	7.00E-05	0.023374
MYL9	7.285358669	0.00323	0.049956
MYLK	2.916018758	0.00019	0.023374
NAAA	2.418311352	0.00128	0.034029
NAP1L1	2.131693472	0.00233	0.043643
NBN	2.20686748	0.00104	0.031347
NCF1C	9.343739157	0.0032	0.049727
NDUFAF3	5.024569525	0.00046	0.02529
NOTCH2NL	3.424753138	0.00065	0.02738
NRGN	5.795768618	0.00114	0.032628
NUDT21	2.061936638	0.00284	0.047495
NUP153	2.777910272	0.00054	0.026243
OAS1	6.520578659	0.00014	0.023374
OAS2	3.47256091	0.00266	0.045856
OGFRL1	2.099433367	0.00019	0.023374
OPN3	2.617156143	7.00E-05	0.023374
OTUD4	2.441893025	0.00073	0.028439
P2RY13	2.661058082	0.0017	0.037932
P704P	3.683302789	0.00092	0.029752
PABPC3	2.291035796	0.00308	0.048925
PAIP2	2.050534476	0.00316	0.049436
PARVB	2.096524951	0.00013	0.023374
PECAM1	2.366902044	0.00037	0.024199
PECI	2.331082396	0.00159	0.036586
PF4V1	3.839717044	0.00062	0.027214
PGCP	2.438510188	0.0024	0.044135
PICALM	2.127265346	0.00133	0.034679
PIGP	2.15995312	0.00212	0.041737
PIK3C2A	2.177994031	0.00047	0.025427
PIK3CB	2.114036081	0.00238	0.043977
PIK3R4	2.142061646	0.00221	0.042563
PILRA	4.030615042	0.00043	0.025216
PIP4K2A	2.149498346	0.00157	0.036575
PLAUR	3.647732662	0.00087	0.029464
PLDN	2.455471368	0.00228	0.043266
PLSCR1	2.086377187	0.0029	0.047723

PNMA1	2.305372694	0.00088	0.029497
POR	2.112571251	0.00114	0.032628
PPBP	3.184352395	0.00192	0.039801
PPP1R10	2.411615655	0.00126	0.034029
PPPDE2	3.249009585	0.00016	0.023374
PRDX3	3.630076621	0.00028	0.023374
PRKAR1A	2.445280555	0.00072	0.028439
PRKCB	4.112455307	0.00175	0.038415
PRKCB1	4.005549023	0.00299	0.04843
PRNP	4.81988926	0.00016	0.023374
PSEN1	2.176484883	0.00098	0.030642
PSMA1	2.830388321	0.00107	0.031952
PSMC6	2.122846418	0.00026	0.023374
PSMD10	2.975227525	0.00302	0.0486
PTGER2	2.181015465	0.00247	0.044589
PTGIR	2.316585612	0.00212	0.041737
PTGS1	2.707572558	0.0018	0.03893
PTPN12	2.626242251	0.00068	0.027969
PTTG1IP	5.344296314	0.00012	0.023374
P38	3.847710023	0.00163	0.037013
PURA	2.331082396	8.00E-04	0.028967
QPCT	2.475980582	0.00045	0.02529
RAB37	2.561519723	0.00045	0.02529
RAB4A	2.484576564	0.00199	0.040677
RASSF2	2.270484204	0.00135	0.034785
RBBP5	2.840214717	0.00027	0.023374
RDH14	2.595477534	0.00015	0.023374
RELA	4.204691636	0.00032	0.023374
RFFL	2.958775018	0.00022	0.023374
RGS10	5.747760706	5.00E-05	0.023374
RHOT1	2.302178983	0.00052	0.02609
RIOK3	2.672148157	4.00E-04	0.024464
RNASE4	2.375119332	0.00168	0.037656
RNF13	2.089271526	8.00E-04	0.028967
RNF145	2.246999806	0.00049	0.025591
RNF146	2.457173961	0.00212	0.041737
RNF5P1	3.660396673	0.00048	0.025473
RNH1	3.271608234	6.00E-04	0.026926
RP2	3.853047576	0.00222	0.042597
RPS15A	4.793236085	3.00E-05	0.023374
RPS4X	3.652793	0.00213	0.041737

RTN2	2.187070915	5.00E-04	0.025795
S1PR3	2.559744828	2.00E-05	0.023374
SDCBP	3.044066762	0.00148	0.035578
SH2D3C	3.805273105	0.00049	0.025473
SH3BGRL	2.057653416	0.00011	0.023374
SHOC2	2.006943497	0.00306	0.048798
SKAP2	2.726405215	0.00018	0.023374
SLAMF6	2.642676811	0.00055	0.026521
SLC24A4	2.797232165	0.00073	0.028439
SLC45A3	2.197708435	0.0014	0.035162
SLCO3A1	2	0.00083	0.0291
SNCA	4.169863043	0.0015	0.035602
SNURF	2.403272099	0.00029	0.023374
SORL1	3.538161741	0.00028	0.023374
SPG21	3.893317497	0.00032	0.023374
SPINT1	2.217601287	0.00205	0.041257
SPTLC2	2.404938498	0.00161	0.036807
SRGN	4.380209883	0.00023	0.023374
SRP9	2.066228775	0.00123	0.033578
STAG2	2.503592917	0.00036	0.024174
STAMBP	2.298989696	0.00198	0.040589
STARD3NL	2.103803558	0.00211	0.041711
STAT3	3.07801444	4.00E-04	0.024546
STRN4	2.064797071	0.00135	0.034785
STXBP3	2.450370664	0.00221	0.042555
SUMO2	3.405814831	0.00105	0.031523
SYPL1	2.251677172	0.00149	0.035578
TAF12	2.0907202	0.00182	0.038962
TAF2	2.339175328	0.00196	0.040422
TBL1XR1	2.153972752	0.00064	0.02738
TBL2	2.394957409	0.0013	0.034335
TICAM1 (TRIF)	2.177994031	1.00E-04	0.023374
TIMP2	4.826575679	0.00029	0.023374
TLR10	3.014669819	0.00053	0.026243
TLR6	3.120981921	0.00025	0.023374
TLR8	2.380063393	0.00086	0.029406
TMED10	4.138190326	0.00261	0.04549
TMED7 (TRAM)	2.337554497	0.00022	0.023374
TMEM123	3.737309388	0.001	0.030786
TMEM189-UBE2V1	2.639015822	0.00238	0.043953
TMEM19	2.8108374	2.00E-04	0.023374

TMEM63A	2.938337267	0.00107	0.031857
TMEM69	2.391639594	0.00314	0.049234
TNFSF13B	2.034959384	0.00171	0.037969
TNPO1	2.032140286	1.00E-04	0.019718
TPM1	3.434261746	0.00237	0.043944
TRAPPC2	2.106722072	2.00E-05	0.023374
TRIM22	4.166973716	0.00017	0.023374
TRIM27	2.777910272	0.00044	0.025216
TRIM5	3.251262408	0.00201	0.040803
TRIM58	3.73471978	0.00108	0.032053
TRMT112	2.37676621	0.00218	0.04237
TSC22D1	3.046177479	0.00077	0.028967
TSC22D2	2.445280555	0.00022	0.023374
TSPYL1	2.470837274	1.00E-04	0.019718
TTC9C	2.095072254	0.00173	0.038063
TYROBP	3.845043714	0.00021	0.023374
UBA3	2.783692784	0.00134	0.034785
UBB	5.95045505	6.00E-05	0.023374
UBC	3.249009585	0.00036	0.024174
UBE2E1	2.121375483	0.00247	0.044538
UNC84A	2.462288827	0.0025	0.044589
USP21	2.781763943	0.00134	0.034785
UTP14A	2.408274762	1.00E-04	0.019718
VCL	5.528928826	0.00147	0.03551
VNN2	3.885229982	0.00013	0.023374
VPS28	3.750284386	0.00078	0.028967
WASPIP	2.220677667	0.00216	0.042248
XK	3.099423724	0.00228	0.043266
YPEL2	3.69609029	0.00276	0.046695
YWHAB	3.716642697	1.00E-04	0.023374
YWHAG	2.262628926	0.00186	0.039185
ZC3H15	2.049113646	0.00078	0.028967
ZCCHC8	2.234574276	0.00068	0.027937
ZFP106	2.64450921	0.00081	0.028967
ZMAT3	4.569384987	0.00319	0.049612
ZNF131	2.226843236	0.00109	0.032178
ZNF217	2.440201021	0.00088	0.029497

Genes down regulated in <i>P.falciparum</i> (F)	FC <-2 (in -ve)	P value	FDR corrected P value
ADAM17	2.203810232	0.00089	0.029497
AGAP8	2.709449955	0.00068	0.027969
AIRE	2.015307521	0.00159	0.036586
AK2P2	2.20686748	0.00091	0.029719
AKR1D1	2.167451934	0.00139	0.035162
ALDH8A1	2.109644634	0.00023	0.023374
ALPP	3.386981249	0.00013	0.023374
ALS2CR14	3.016760153	6.00E-05	0.023374
ANKMY1	2.275210456	6.00E-04	0.026926
ANKRD13D	3.925836255	0.00039	0.024464
ANKRD30B	2.103803558	3.00E-04	0.023374
ANKRD44	2.803054898	0.00086	0.029406
AP3M2	2.436820527	0.00022	0.023374
ARL16	2.863937482	0.00052	0.02609
ARL17P1	2.074839873	0.00033	0.023374
ASB1	2.443586203	0.00121	0.033322
ASB16	2.899893666	0.00016	0.023374
ASL	2.15546629	0.00234	0.043643
ATG10	2.666597354	0.00057	0.026865
ATG12	2.45206972	0.00037	0.024347
ATRIP	2.145033234	3.00E-04	0.023374
BCYRN1	2.4794154	8.00E-04	0.028967
BLZF1	2.758721844	0.00012	0.023374
BMP8B	2.928171392	0.00031	0.023374
BOLA2	2.171963713	0.00178	0.038701
C11orf17	2.109644634	0.00091	0.029719
C11orf63	2.606294299	0.00063	0.027374
C11orf80	2.121375483	0.00059	0.026926
C14orf80	2.526254524	0.00108	0.03203
C14orf82	2.570412675	7.00E-05	0.023374
C15orf63	2.764464413	0.00047	0.025473
C16orf93	2.286276671	0.00296	0.048261
C19orf48	2.431758566	0.00131	0.034423
C19orf66	2.069095163	0.00091	0.029719
C21orf2	2.134650676	0.00039	0.024464
C21orf24	2.121375483	0.00122	0.033527
C21orf55	2.366902044	0.00065	0.027423
C21orf58	2.71508996	0.00032	0.023374
C2orf69	2.873880353	0.00054	0.026243
C3orf50	2.046274939	0.00115	0.032707

C5orf28	3.441410522	0.00075	0.028874
C6orf170	3.729545946	1.00E-05	0.013363
C7orf54	3.351948539	0.00028	0.023374
C8orf37	2.394957409	0.00119	0.033011
C8orf45	2.66474965	1.00E-04	0.023374
C9orf130	2.703821666	0.00051	0.02595
C9orf37	2.339175328	0.00058	0.026926
C9orf80	2.962879596	4.00E-04	0.024464
CACYBP	2.709449955	0.00018	0.023374
CAPS	2.121375483	0.00067	0.027893
CARD11	2.0363704	0.00027	0.023374
CCBE1	3.439025945	7.00E-05	0.023374
CCDC125	2.600880293	0.00075	0.028967
CCDC84	2.0139111	0.00301	0.048519
CCNE1	2.043440165	0.00017	0.023374
CDAN1	2.481134595	0.00013	0.023374
CDC14A	2.140577397	0.00043	0.025216
CDK10	2.292624371	0.00058	0.026926
CEP27	2.529759085	0.00032	0.023374
CHAF1A	2.278366754	0.00045	0.02529
CLDND2	2.034959384	0.00026	0.023374
COX19	2.566851795	0.00085	0.029401
CPSF1	2.122846418	0.00111	0.032178
CRCP	2.834314793	2.00E-04	0.023374
CREB1	2.754900093	0.00028	0.023374
CRYZL1	2.082043195	0.00081	0.028967
CSNK1E	2.10000232	0.00214	0.041886
CTAGE5	2.45206972	0.00081	0.028967
CTGLF3	2.822551687	7.00E-05	0.023374
CYCSL1	3.184352395	0.001	0.030786
D2HGDH	2.191623533	0.00128	0.034029
DCLRE1C	2.679567205	3.00E-05	0.023374
DDB1	2.032140286	0.00295	0.048071
DDX17	2.158456473	0.00089	0.029497
DDX19A	2.057653416	0.00021	0.023374
DDX51	2.918040688	0.00032	0.023374
DDX6	2.591881931	0.00069	0.028197
DENND4C	2.121375483	0.00287	0.047723
DENR	3.51128719	5.00E-05	0.023374
DHRS13	2.049113646	7.00E-05	0.023374
DIDO1	2.193143177	0.00088	0.029497

DKFZp434K191	2.622604028	0.0021	0.041572
DMC1	3.1058755	1.00E-04	0.023374
DNAH1	2.185555478	0.00117	0.032904
DPP7	2.029325093	0.00076	0.028967
DTWD2	3.027233586	0.00072	0.028439
DUT	2.334316204	0.00111	0.032178
DUXAP3	3.271608234	1.00E-04	0.023374
EIF2AK4	2.609909895	0.00039	0.024464
ENO3	2.080600533	0.00064	0.02738
ERGIC1	2.514026749	0.00048	0.025473
ERI3	2.029325093	0.00064	0.02738
EVI5	2.711328654	6.00E-05	0.023374
EYA3	2.033549347	0.00304	0.048647
FAM108C1	2.202283196	6.00E-04	0.026926
FAM115A	2.124318373	0.00146	0.035429
FAM133B	2.073402202	0.00071	0.028439
FAM153B	3.328794939	0.00013	0.023374
FAM40B	3.010493495	7.00E-05	0.023374
FAM73A	2.64634288	0.00016	0.023374
FANCD2	2.500124605	7.00E-05	0.023374
FANCG	2.142061646	0.00046	0.02529
FCAR	2.622604028	0.00207	0.041359
FKTN	2.067661472	0.00267	0.045959
FLJ10213	2.633533844	5.00E-04	0.025844
FLJ12078	3.333412829	0.00022	0.023374
FLJ25363	2.42670712	0.00031	0.023374
FLJ34047	2.334316204	0.00048	0.025473
FLJ35390	2.114036081	0.00264	0.045635
FLJ37396	2.283109414	0.00082	0.028967
FLJ38717	3.914966602	0.00082	0.028967
FLJ40722	2.726405215	8.00E-05	0.023374
FLJ44124	2.50185816	0.00086	0.029406
FLJ45256	2.542063379	0.00152	0.035878
FOXRED1	2.136130816	0.00048	0.025473
FUT6	2.049113646	0.00078	0.028967
FYN	2.256364275	0.00054	0.026254
GABPB2	2.370185542	0.00031	0.023374
GALE	2.139094176	0.00081	0.028967
GALNT3	3.47256091	0.00015	0.023374
GALR2	2.070529848	6.00E-04	0.026926
GDPD1	2.383365149	0.00141	0.035178

GJC1	2.394957409	0.00021	0.023374
GOLGA8A	2.283109414	0.00154	0.036185
GPR1	3.033535091	2.00E-05	0.023374
GPX8	2.106722072	6.00E-04	0.026926
GSDMB	2.557971163	0.00029	0.023374
GSTTP2	2.785622961	0.00029	0.023374
HARS	2.109644634	0.00026	0.023374
HCFC1R1	2.284692494	0.00058	0.026926
HIATL2	2.857988279	0.00017	0.023374
HNRPDL	2.156960863	0.00126	0.034029
HRAS	2.191623533	0.00021	0.023374
HSCB	2.433444717	0.00023	0.023374
HSD17B7	2.889860796	4.00E-05	0.023374
ICA1	2.615342697	0.00046	0.025374
IL10	2.375119332	3.00E-04	0.023374
IL11RA	2.344044567	0.00082	0.028967
IL17RD	3.084421651	0.00022	0.023374
IL18	2.450370664	0.00014	0.023374
ILKAP	2.334316204	0.00038	0.024464
INADL	2.477697396	0.00017	0.023374
INPP5E	2.087823855	0.00123	0.033578
IPP	2.324628215	0.00084	0.029283
ITPR3	2.342420362	0.00199	0.040589
KCTD7	2.701948169	0.00055	0.026379
KIAA0114	2.279946545	0.00057	0.026839
KIAA0492	2.363623094	0.00164	0.037081
KIAA1530	2.66474965	0.00043	0.025216
KIAA1632	2.056227653	0.00101	0.030786
KLF12	2.897884309	0.00037	0.024199
KLHDC4	2.006943497	0.00034	0.024067
LAMA5	2.064797071	0.00014	0.023374
LEP	4.161201066	1.00E-05	0.013363
LILRA5	3.171136546	0.00024	0.023374
LONP2	2.300583787	0.00018	0.023374
LRP5L	2.399942765	5.00E-04	0.025795
LRRC37B2	3.153600696	0.00013	0.023374
LUC7L	2.453769955	0.00033	0.023754
MAPK8IP3	2.264197804	0.00233	0.043643
MBD4	2.573978495	0.00077	0.028967
MBOAT2	2.145033234	7.00E-05	0.023374
MBTD1	2.672148157	0.00014	0.023374

MCART1	2.593679109	0.00038	0.024464
MCM8	2.145033234	0.00113	0.032359
METT11D1	2.826467288	0.00039	0.024464
METTL1	2.051956291	0.00035	0.024123
MFSD11	2.469125214	0.00011	0.023374
MGC12760	2.701948169	0.00038	0.024464
MGC26356	2.30697121	0.00045	0.02529
MORG1	2.211461307	0.00112	0.032314
MRP63	2.391639594	0.00064	0.02738
MTP18	2.391639594	0.00025	0.023374
MTX1	2.200757219	0.00036	0.024199
N4BP2	3.164549205	0.00026	0.023374
NARF	2.047693801	0.00037	0.024251
NBPF8	2.403272099	0.00281	0.047301
NCBP2	2.002774511	9.00E-05	0.023374
NEK8	2.231478645	0.00107	0.03191
NFYB	2.124318373	3.00E-04	0.023374
NLRP8	3.635112466	2.00E-04	0.023374
NRSN2	2.512284762	0.00026	0.023374
NUBPL	3.044066762	0.00016	0.023374
NUDT1	2.345669898	0.00189	0.039533
OCIAD1	2.606294299	0.00147	0.03551
ORAOV1	2.348923942	0.00044	0.025216
PACAP	2.581124981	0.00032	0.023374
PAF1	2.156960863	0.00095	0.030325
PCDHB19P	2.234574276	0.00021	0.023374
PCDHB9	3.668016173	5.00E-05	0.023374
PDE4C	2.07915887	0.00032	0.023374
PDE7A	2.844154821	6.00E-05	0.023374
PHAX	2.225300241	0.00099	0.030755
PHKA2	2.308570835	0.00096	0.030558
PIGX	2.973165969	0.00014	0.023374
PIP5K2B	3.20427951	0.00026	0.023374
PLA2G2D	3.545526797	0.00018	0.023374
PLA2G4B	2.924114897	0.00051	0.02609
PLIN5	2.115501927	0.00021	0.023374
PLXNA4	2.056227653	6.00E-05	0.023374
PML	2.491474831	0.00053	0.026228
PMPCA	2.273633946	0.00099	0.030755
PNPT1	2.737767626	0.00025	0.023374
POFUT1	2.245442844	0.00037	0.024199

POLR2J4	2.503592917	0.00024	0.023374
POLR3A	2.313376368	6.00E-05	0.023374
PPA2	3.278418431	0.00011	0.023374
PPM1B	2.588291309	0.00079	0.028967
PPP2R3A	2.830388321	0.00093	0.02995
PRKDC	2.264197804	0.00139	0.035162
PRO1853	2.360348687	0.00069	0.027969
PTGR2	2.604488379	0.00031	0.023374
PTP4A2	3.47256091	9.00E-05	0.023374
PTPLAD2	2.408274762	0.00065	0.02738
RAD51	2.808889751	0.00061	0.026926
RAX2	2.517514347	0.00035	0.024123
RAXL1	3.233283475	0.00032	0.023374
RBM3	2.243886961	0.00151	0.035829
RBM33	2.440201021	0.00081	0.028967
RFX4	2.507066041	2.00E-04	0.023374
RHBDL2	3.40817638	0.00011	0.023374
RLTPR	2.174976782	0.00091	0.029719
RNF126	2.015307521	0.00181	0.038962
RNF213	2.40994463	0.00065	0.02738
RPL7L1	2.283109414	2.00E-04	0.023374
RUNDC2C	2.533268507	0.00012	0.023374
SCRIB	2.037782393	0.00039	0.024464
SDHALP1	2.366902044	0.00013	0.023374
SDHAP2	3.027233586	0.00017	0.023374
SF1	2.403272099	0.00172	0.038018
SFMBT2	2.37676621	0.00049	0.025503
SFRS14	2.234574276	0.00065	0.02738
SIGLEC16	2.577549261	0.00018	0.023374
SIGLEC6	2.707572558	0.00023	0.023374
SIPA1L2	2.440201021	0.00066	0.02761
SLC11A2	2.239225777	0.00169	0.037931
SLC16A12	2.357078816	0.00213	0.041737
SLC25A16	2.20686748	0.00022	0.023374
SLC25A20	2.524504064	0.00052	0.02609
SLC35C2	2.142061646	3.00E-05	0.023374
SLC44A4	2.167451934	0.00048	0.025473
SLC4A5	2.624422509	0.00041	0.024733
SLC5A8	3.07801444	0.00072	0.028439
SLC7A5	2.357078816	0.00039	0.024464
SLFN13	2.197708435	0.00073	0.028439

SMCR5	3.552907183	1.00E-04	0.023374
SNAPC1	3.391679859	4.00E-04	0.024464
SNORA25	2.618970846	0.00077	0.028967
SNORD104	2.287861946	5.00E-04	0.025795
SNRNP25	2.256364275	0.00201	0.040819
SNRNP70	2.066228775	0.00048	0.025473
SPC24	2.547354951	8.00E-05	0.023374
SPTLC1	2.096524951	0.00028	0.023374
SSTR2	3.547985221	0.0014	0.035178
STAG3L2	2.50185816	0.00104	0.031347
STAG3L3	2.707572558	0.00021	0.023374
STAR	2.593679109	3.00E-05	0.023374
STARD5	2.046274939	0.00103	0.031314
STIL	2.053379091	4.00E-04	0.024464
SYAP1	3.30351066	0.00088	0.029497
SYNJ2BP	2.433444717	0.00207	0.041387
TARBP2	2.128740365	3.00E-04	0.023374
TDRD1	2.184041091	0.00014	0.023374
TMEM1	2.022304162	0.00046	0.02529
TMEM106A	2.936301272	0.00015	0.023374
TMEM137	3.513721873	8.00E-05	0.023374
TMEM156	2.226843236	0.003	0.048473
TMEM191A	2.433444717	4.00E-05	0.023374
TMEM222	2.080600533	0.0012	0.033206
TNFSF14	2.396618043	0.0025	0.044589
TNFSF15	2.595477534	0.00076	0.028967
TSR1	2.168954818	2.00E-05	0.023374
TUBG1	2.219138944	0.00126	0.034029
TUBGCP6	2.011121161	0.00014	0.023374
UNKL	2.289448321	0.00033	0.023374
USP33	2.029325093	0.00149	0.035578
USP48	2.265767771	0.00043	0.025216
USP49	2.446976082	0.00013	0.023374
VAR52	2.162949527	0.00025	0.023374
VPS13C	2.086377187	0.00111	0.032178
VPS41	3.251262408	0.00079	0.028967
WBSCR19	2.398279828	6.00E-04	0.026926
WDR33	2.087823855	0.00099	0.030755
WDR51A	2.408274762	0.00083	0.0291
WDR74	3.029332632	0.00027	0.023374
ZBTB32	2.606294299	0.00089	0.029497

ZNF223	2.766381258	5.00E-04	0.025795
ZNF320	2.688869988	0.00142	0.035178
ZNF346	2.197708435	0.00064	0.02738
ZNF430	2.577549261	0.00032	0.023374
ZNF486	2.381713699	0.00145	0.035338
ZNF493	2.661058082	0.00049	0.025473
ZNF526	2.46058269	0.00072	0.028439
ZNF557	2.758721844	0.00017	0.023374
ZNF577	2.62988552	0.00012	0.023374
ZNF600	2.469125214	0.00048	0.025473
ZNF626	2.316585612	0.00147	0.03551
ZNF652	2.672148157	0.00095	0.030331
ZNF669	2.659214216	0.00018	0.023374
ZNF682	3.51128719	0.00032	0.023374
ZNF738	3.084421651	2.00E-04	0.023374
ZNF763	2.334316204	0.00043	0.025216
ZNF773	2.302178983	0.00049	0.025658
ZNF786	2.96493402	0.00011	0.023374
ZNF860	2.565073206	0.00306	0.048798
ZNF93	2.606294299	2.00E-04	0.023374
ZRANB2	2.273633946	0.0032	0.049727

Supplementary Table S2b: Genes differentially regulated between *P. falciparum* (F) versus *P. falciparum* convalescence (AF)

Genes up regulated in <i>P. falciparum</i> (F)	FC>2	P value	FDR corrected P value
C4orf18	8.597993383	0.00011	0.04878
CD1D	3.470154749	7.00E-05	0.046782
CD36	3.570187886	9.00E-05	0.04899
CPVL	4.38932775	3.00E-05	0.04364
CYFIP1	3.768525096	2.00E-05	0.04368
DPYSL2	3.101572825	0.00011	0.03878
EPB4IL3	7.125543205	1.00E-05	0.03367
F13A1	11.54342949	4.00E-05	0.04368
FZD2	7.495371575	0	0.038085
LCMT2	2.781763943	4.00E-05	0.04368
MS4A7	5.172995728	4.00E-05	0.04367
PNKD	3.44857418	0.00011	0.03871
RAB4A	3.000077979	4.00E-05	0.04368
SLC7A7	4.25748073	7.00E-05	0.040883
TNS3	3.784230587	7.00E-05	0.046782
VCL	5.637283021	1.00E-04	0.04176

Genes down regulated in <i>P. falciparum</i>	FC<-2 (in -ve)	P value	FDR corrected P value
AGAP8	3.711493906	4.00E-05	0.04368
ATG2A	2.595477534	1.00E-05	0.04368
BCL2	2.909961367	3.00E-05	0.04368
C20orf107	2.239225777	1.00E-04	0.04878
D2HGDH	3.020945171	4.00E-05	0.04368
DAPK2	2.774061938	6.00E-05	0.04368
DHRS9	2.869899069	9.00E-05	0.04878
DPEP3	2.926142441	0.00011	0.04878
EYA3	3.955883666	5.00E-05	0.04368
GSPT1	2.308570835	1.00E-04	0.04878
METT11D1	3.711493906	4.00E-05	0.04368
REC8	2.547354951	0.00011	0.04878
RUNDC3A	5.248845018	1.00E-04	0.04878
SLC7A5	5.021087965	7.00E-05	0.047462
SNORA57	2.043440165	0.00011	0.04878
SNX26	2.496661098	4.00E-05	0.04368
SPNS2	2.396618043	8.00E-05	0.04878
STXBP5	2.830388321	0.00012	0.04878

TGM3	3.217633484	8.00E-05	0.047462
TRIM10	2.225300241	0.00012	0.04878
TRPM6	2.438510188	1.00E-05	0.04223
YPEL4	3.528365461	6.00E-05	0.04368

Supplementary Table S2c: Genes differentially regulated between *P. falciparum* (F) versus GSE 45919 malaria naïve US adults (N)

Genes up regulated in <i>P.falciparum</i> (F)	FC>2	P value	FDR corrected P value
ABAT	2.040609	0.00043	0.007277
ABCA1	2.812786	0.00085	0.01149
ABCC3	7.076323	1.00E-05	0.000383
ABCC4	3.635112	5.00E-04	0.008107
ABCD1	2.662903	3.00E-05	0.001291
ABCF3	8.011098	3.00E-05	0.001266
ABHD2	2.482855	0.00642	0.043431
ABHD4	2.629886	2.00E-04	0.004301
ABHD5	2.606294	0.00021	0.004469
ABI3	5.35171	0	0.000304
ABLIM3	2.259494	0.00086	0.011606
ACADS	3.810552	1.00E-05	0.000405
ACOT7	11.98369	0	2.00E-05
ACOX1	2.779836	0.00032	0.005992
ACP2	4.623547	0.00611	0.042008
ACRBP	2.626242	0.00141	0.015952
ACSBG1	2.265768	0.00478	0.035643
ACSL1	4.225143	0.00182	0.018748
ACTN1	14.01597	0	0.000249
ACTN4	3.839717	0.00038	0.006719
ACVR1B	2.037782	0.00398	0.031804
ADAMTSL4	2.481135	0.00099	0.012759
ADAP1	3.305801	0	4.10E-05
ADAP2	2.168955	0.00104	0.013161
ADAT3	2.440201	1.00E-05	0.000383
ADIPOR1	4.072741	0.00212	0.020755
ADM	2.308571	0.00713	0.04662
ADORA2B	3.050403	0.00062	0.009324
ADPRH	4.566219	0	0.000164
AFAP1L2	3.2898	0.00653	0.043877
AFTPH	3.116658	0.00462	0.034881
AGBL5	3.73472	0.00025	0.005069
AGPAT1	2.334316	0.00241	0.022615
AGPAT2	2.267339	9.00E-05	0.002455
AGPAT3	2.07484	0.00309	0.026838
AGTRAP	3.417639	0.00287	0.025583
AHDC1	8.597993	1.00E-04	0.00264

ALAS2	3.980639	0.00173	0.018182
ALDH3B1	2.303775	0.0054	0.038658
ALG1	2.540302	2.00E-04	0.004231
ALOX12	2.16295	0.00379	0.03089
ALPK1	3.351949	0.00471	0.035339
AMY1A	2.644509	0.00018	0.004028
AMY1B	25.93808	0.00045	0.00755
ANG	3.829086	2.00E-04	0.004312
ANK1	2.084932	0.00122	0.014618
ANKHD1-EIF4EBP3	16.79547	0	5.80E-05
ANKRD22	3.301222	0.00015	0.003494
ANKRD50	4.481557	0	3.80E-05
ANKRD9	4.81655	0	6.00E-06
ANO10	2.039195	0.00594	0.041163
ANXA2	4.85678	3.00E-05	0.001054
ANXA2P1	2.358713	0.00017	0.003884
AP1B1	6.502525	0.00284	0.025402
AP2A1	2.496661	0.00191	0.019361
AP3S2	5.274374	0.00076	0.010631
APBB1IP	2.281527	4.00E-05	0.0015
APEX2	2.394957	0.00107	0.013446
APH1B	2.584706	0.00102	0.013017
APOBEC3C	2.234574	0.00071	0.010184
AQP10	4.681595	0.00044	0.007402
AQP9	8.106055	4.00E-05	0.001418
ARAP3	6.736504	0.00015	0.003529
ARG2	2.022304	0.00399	0.031808
ARHGAP17	2.928171	1.00E-05	0.000589
ARHGDI1A	2.950583	4.00E-05	0.001362
ARHGEF11	2.51577	8.00E-05	0.002348
ARID3A	2.694467	2.00E-05	0.000839
ARMC5	7.889862	0.00068	0.009968
ARMC6	5.201761	4.00E-05	0.001337
ARMC7	2.493202	0.00436	0.033627
ARRB1	2.264198	0.0015	0.016606
ARRDC1	2.701948	0.00494	0.03633
ARSD	2.501858	2.00E-05	0.000951
ART1	3.448574	5.00E-05	0.001617
ASAP2	2.781764	1.00E-05	0.000681
ASF1B	2.566852	0.00023	0.004804
ASGR2	2.273634	0.00181	0.018724

ASNA1	2.370186	0.00052	0.008346
ATG9A	2.730187	0.00125	0.014821
ATL3	3.961371	4.00E-05	0.001455
ATN1	3.173335	0.00014	0.003359
ATOX1	3.140512	0.00016	0.003592
ATP13A2	2.938337	0.00159	0.017236
ATP5G2	3.38933	6.00E-05	0.001976
ATP6V0C	3.724379	0	0.000147
ATP9A	3.063116	0.00051	0.008233
ATXN2L	3.14269	0.00271	0.02461
AURKA	2.093621	0.00032	0.00595
B3GALT4	2.284692	0.00165	0.017702
B3GNT8	2.008335	0.00139	0.015767
B4GALT5	2.749177	0.00093	0.012208
BAK1	2.481135	8.00E-05	0.002267
BAMBI	2.668446	0.00094	0.0123
BASP1	2.946495	0.0011	0.013678
BAT4	2.182528	0.00035	0.0063
BATF	4.823231	0.00024	0.004902
BATF2	2.570413	0.00727	0.047259
BCAT1	3.786855	0.00172	0.018173
BCL2L1	3.361255	0.00252	0.02341
BCL3	3.928558	0.00041	0.007027
BCORL1	4.910943	1.00E-05	0.000419
BCR	2.193143	0.00065	0.009596
BEGAIN	2.662903	0.00507	0.037032
BEST1	3.328795	0.00479	0.035666
BEX1	2.722628	0.00041	0.007031
BLM	2.273634	8.00E-04	0.011036
BLOC1S1	2.148009	0.00542	0.038674
BMF	3.335724	0.00018	0.004001
BMP6	3.572663	0.00435	0.033571
BMP8B	4.737086	0.00053	0.008429
BRSK1	3.528365	0.00064	0.009475
BSG	2.286277	0.00065	0.009574
BST1	3.244509	0.00056	0.008683
BTD	2.842184	0.00029	0.005628
BYSL	2.441893	0.00195	0.019623
C1QA	4.723971	0.00292	0.025877
C1QB	2.889861	2.00E-05	0.000898
C1QC	2.108183	0.00076	0.010663

C2	2.037782	0.00183	0.018812
C2CD2L	2.182528	0.00189	0.019255
C2orf18	63.03145	0.00251	0.023353
C3AR1	3.044067	0	4.90E-05
C5AR1	3.31498	0	0.000133
CA1	3.149232	0.00021	0.004458
CA2	3.42238	0.00043	0.007294
CABP5	11.75335	0.00019	0.004198
CALCOCO1	3.120982	0	6.00E-06
CALD1	3.818484	0.00013	0.00317
CALML4	2.073402	0.00075	0.010591
CAMK1	2.783693	0	0.000152
CAMP	2.642677	0.00018	0.004058
CAMTA2	3.708922	0.00338	0.028568
CAPNS1	7.417844	0.00474	0.035433
CAPZA1	2.448673	9.00E-05	0.002445
CARD16	3.000078	0.00192	0.019434
CASP3	13.46367	0.00012	0.003062
CASP5	6.399681	0.00485	0.03587
CASP9	6.151763	1.00E-05	0.000363
CBARA1	2.977291	0	0.000285
CBR1	2.462289	0.00508	0.037064
CBX3	6.703897	0.00013	0.003175
CBX8	2.034959	0	4.00E-06
CCDC109A	2.733975	0.00617	0.042247
CCDC127	33.31269	0.00722	0.047069
CCDC71	2.403272	8.00E-05	0.00228
CCDC90A	2.626242	0.00011	0.002759
CCR1	3.151416	0.00081	0.011116
CCR2	2.348924	0.00018	0.004087
CD151	2.393298	0.00364	0.030012
CD163	4.466052	0.00012	0.003
CD226	2.302179	0.0016	0.017274
CD4	3.427128	0.00458	0.034697
CD63	2.6926	0.00035	0.006349
CD68	2.240778	0.00056	0.008745
CD74	2.475981	0.00285	0.025446
CD84	2.639016	0.00024	0.004893
CD9	2.067661	3.00E-05	0.001189
CDA	2.226843	0.00532	0.038242
CDC14B	3.923116	0.00422	0.032985

CDC42BPB	3.217633	0	0.00018
CDC42EP2	4.195957	0.00072	0.010281
CDGAP	2.66475	0.00721	0.04704
CDH6	5.696201	0.00596	0.041252
CDIPT	3.25803	0	0.000146
CEACAM3	3.105876	4.00E-04	0.006907
CEBPA	2.60991	0.00439	0.033756
CEBPE	2.318192	0.006	0.041393
CECR1	3.033535	0.00754	0.048319
CECR6	2.211461	0.00093	0.012173
CENPA	5.180172	0.00214	0.020816
CENPBD1	2.313376	0	7.00E-06
CETP	2.45207	0.00275	0.024845
CFP	2.023706	0.00094	0.012276
CHCHD10	3.701218	0.00541	0.038674
CHMP1A	3.439026	2.00E-05	0.000771
CHST14	4.753532	5.00E-05	0.001636
CICK0721Q.1	3.77637	0	0.000202
CINP	4.228072	0	2.00E-06
CKAP4	3.224331	1.00E-05	0.000669
CKB	2.17347	0.00095	0.01242
CLC	2.871889	0.00167	0.01785
CLDN5	2.084932	0.00273	0.024719
CLEC1B	3.140512	0.00217	0.021016
CLEC4D	5.680429	0.00103	0.013093
CLIP2	5.080604	0	0.000239
CLN6	2.188587	0.00091	0.012102
CLP1	3.625048	0.00467	0.03514
CMTM5	2.033549	6.00E-05	0.001945
CNOT6L	2.887858	0.00015	0.003592
CNPY3	7.09597	0.00123	0.01471
COL6A3	4.310933	7.00E-05	0.001991
COX15	3.513722	6.00E-05	0.001968
CPNE5	2.331082	3.00E-05	0.001294
CPT1A	3.326488	0.00521	0.037678
CPT2	3.190981	0	5.50E-05
CRAT	2.644509	0.00034	0.006235
CRISPLD2	2.399943	8.00E-05	0.002316
CRNKL1	2.926142	0.00176	0.018377
CRSP6	3.01676	3.00E-04	0.005649
CSK	27.43603	0.00389	0.03137

CTDSPL	6.386387	0	4.00E-06
CTNNA1	15.21055	1.00E-04	0.002686
CTSA	2.273634	0	4.50E-05
CTSD	4.047413	0.00092	0.012171
CTSL1	3.217633	0	0.000315
CTSZ	2.208398	1.00E-05	0.000405
CTTN	13.89987	0.00038	0.006645
CX3CR1	2.208398	0	5.80E-05
CXCL10	2.167452	0.00056	0.008724
CXCL5	2.51577	0.00025	0.005032
CXCR6	2.371829	0.00228	0.021773
CYB5R2	4.90754	0.00035	0.006286
CYB5R3	2.606294	0.00136	0.015574
CYFIP1	2.015308	0.00015	0.003531
CYLN2	4.08688	0.00209	0.020549
CYP2F1	3.108029	0	0.000146
CYP4F22	2.112571	0.00123	0.014697
DAB2	2.161451	0.00378	0.030804
DAG1	2.250117	0.00113	0.013935
DAK	15.01154	0.00026	0.005119
DBNL	2.106722	0	1.20E-05
DCTN1	2.009728	0.00157	0.017082
DDEF2	6.830542	0.00747	0.048064
DDX58	6.538683	0.00263	0.024128
DEDD	3.893317	0.00147	0.016432
DEFA1	3.721799	0.00502	0.036802
DEFA1B	2.479415	0.00632	0.042952
DEFA3	18.94835	0.00225	0.021569
DEFA4	7.240052	0	1.40E-05
DENND1A	6.050272	0	3.00E-06
DHCR24	3.807912	0.00061	0.009193
DHCR7	4.472247	0.00035	0.006286
DHRS9	2.588291	0.00636	0.043144
DHX8	2.179504	0.00169	0.017971
DKFZp686I15217	4.813212	0.00053	0.00836
DLGAP4	2.295805	0.00062	0.009324
DNM3	4.646035	0.00352	0.029359
DOCK5	2.85997	0.00102	0.012947
DOK2	2.352183	0.0055	0.039171
DOK3	6.346671	0.00377	0.030781
DOLK	2.425026	1.00E-05	0.000396

DPP3	7.210004	0.00175	0.018339
DRAM1	3.662935	0.00071	0.010184
DRAP1	2.507066	0.00102	0.013008
DSE	3.32188	0.00646	0.043593
DULLARD	2.469125	6.00E-05	0.001854
DYRK1B	3.592529	4.00E-04	0.006918
DYSF	3.650262	0.00047	0.007741
EBI3	2.930202	1.00E-05	0.000369
ECE1	2.579337	0.00028	0.005492
ECE2	2.146521	0.00656	0.043997
ECGF1	2.134651	0.00012	0.002936
ECHDC3	182.0259	0.00042	0.007167
EDC3	126.6761	1.00E-05	0.000468
EFNB1	85.98422	5.00E-05	0.001606
EGF	8.672217	0.00017	0.003937
EHD3	144.6076	0.00016	0.00368
EHMT2	19.3063	4.00E-05	0.001313
ELMO2	3.642679	0.00264	0.024163
ELP4	2.969047	0.00034	0.006211
EMR1	2.584706	1.00E-05	0.000592
ENDOD1	2.508804	0.00299	0.026253
ENG	3.408176	0.00367	0.030103
EPB41L3	4.710891	0.00114	0.014029
EPB49	3.384634	0.00153	0.016848
EPHX1	2.666597	0.00211	0.020695
EPN1	2.294214	0.00117	0.014277
EPOR	3.612506	0.0021	0.020586
EPS15L1	2.323017	0.00208	0.020487
EPSTI1	2.253238	0.00049	0.007948
ERC1	2.179504	0.00329	0.028061
ERCC1	6.220368	0.00711	0.046532
ERLIN1	5.080604	0	9.00E-05
ESAM	3.335724	0	6.00E-06
ESRRA	3.056753	0.0017	0.018
EVI2B	3.14269	0.00314	0.027111
EXOSC4	2.718856	0.00053	0.008369
F11R	2.547355	1.00E-05	0.000403
F13A1	2.90593	0.00287	0.025609
F2R	3.685857	5.00E-05	0.001772
F2RL3	3.450965	0.00673	0.044799
FADD	16.18965	0.00026	0.005102

FADS1	5.115942	9.00E-05	0.00251
FAH	2.185555	0.00329	0.028048
FAM100A	2.408275	0.00143	0.016126
FAM110A	2.42839	0.00038	0.006679
FAM125B	2.591882	0.00143	0.016107
FAM127B	2.156961	0.00168	0.017902
FAM129B	3.202059	0.00144	0.016204
FAM176B	2.563296	3.00E-05	0.00125
FAM189B	2.628063	0	2.00E-06
FAM20C	2.056228	0.00023	0.004771
FAM50B	2.488023	0.00135	0.015534
FAM69B	2.159953	0.00125	0.01479
FAM86C	2.109645	6.00E-04	0.009193
FAM89A	7.305586	0.00749	0.048131
FAM89B	2.720742	0.001	0.012801
FAR2	5.151527	0.00705	0.046333
FASLG	2.361985	0.00081	0.011153
FBLN1	19.83532	0.00405	0.032131
FBP1	3.24226	0	5.00E-06
FBS1	2.156961	1.00E-05	0.000403
FBXO6	4.011106	3.00E-04	0.005746
FCER1G	2.053379	0	9.60E-05
FCGR1A	3.090842	0.00132	0.015335
FCGR1B	2.418311	0.00079	0.010997
FCGR1C	2.053379	0.00109	0.013626
FCGRT	2.96288	0.00011	0.002844
FER1L3	13.90951	0.00024	0.004941
FERMT3	2.61172	0	8.00E-05
FGR	2.521007	0.00431	0.033438
FHL2	3.231043	0.00245	0.022884
FIBP	3.627561	0.00216	0.020987
FKBP1A	8.693879	3.00E-05	0.001039
FKBP1B	2.579337	7.00E-05	0.002106
FKBP8	4.011106	0.00253	0.023466
FKBP9L	2.834315	2.00E-05	0.000763
FLJ10357	2.826467	8.00E-05	0.002316
FLJ10986	5.03852	0.00099	0.012756
FLJ12355	7.521394	5.00E-05	0.001699
FLJ20489	2.199232	0.00027	0.005249
FLJ22662	3.088701	0.00183	0.018843
FLJ45032	2.944454	1.00E-05	0.000411

FLJ45337	2.572195	0.00055	0.008557
FLVCR2	3.269341	0.00381	0.030936
FMNL1	2.049114	1.00E-05	0.000475
FMO5	5.190955	0.00156	0.017081
FOXMI	3.157976	0.00068	0.009995
FPR1	4.272262	0.00072	0.010293
FPR2	2.219139	0.00138	0.015706
FRAT2	2.810837	0.00032	0.005902
FRMD3	2.644509	0.00102	0.01301
FSCN1	2.75681	0.00042	0.007099
FSTL1	2.080601	2.00E-04	0.004284
FSTL3	2.339175	0.00349	0.029146
FTHL11	4.904139	0.0021	0.020625
FTHL2	2.181015	1.00E-05	0.000643
FUCA1	3.552907	0.00703	0.046262
FURIN	2.793357	0.00052	0.008286
FUT8	2.879863	0.00035	0.006328
FXR2	7.840795	0.00293	0.025926
FXYD6	6.164569	1.00E-05	0.000565
FZD1	5.490738	0.00525	0.03789
FZD2	4.08688	0.00032	0.00595
G6PC3	2.355446	0.0019	0.019323
G6PD	3.942197	0.0014	0.015859
GAA	3.781608	0.00182	0.018748
GAB2	3.615011	0.0011	0.013697
GALNT6	2.013911	0	8.90E-05
GAPDH	4.633171	9.00E-04	0.011959
GAPDHL6	3.71922	0.00025	0.005069
GART	2.366902	3.00E-05	0.001186
GAS2L1	2.700076	0.00247	0.023083
GAS6	2.013911	0.00013	0.003181
GAS7	2.300584	0.00315	0.027222
GATA1	6.556837	0.00046	0.007571
GBA	2.334316	1.00E-05	0.000502
GCNT1	2.051956	0.00287	0.025606
GDE1	2.460583	0.00076	0.010663
GEMIN6	5.921653	0.00147	0.016414
GFI1B	3.2898	2.00E-05	0.000786
GIMAP4	2.030732	0.00036	0.00646
GIMAP8	2.889861	0.00237	0.022397
GINS3	2.936301	0.00085	0.011524

GIPC1	3.06524	0.00204	0.02017
GK	2.002775	0.00334	0.028333
GLB1	2.106722	0.00014	0.003322
GLIPR1	6.745849	0.00213	0.020766
GLTPD1	7.743576	0.00446	0.034173
GMPR	3.282966	4.00E-05	0.001341
GNA12	4.135323	0.00787	0.049778
GNA15	3.331103	0.00374	0.030606
GNAI2	2.909961	0.00054	0.008557
GNG11	3.108029	0.00517	0.03749
GNG8	2.842184	0.00054	0.008524
GNS	2.206867	0.00023	0.004712
GORASP2	5.735821	0.00159	0.017232
GOSR2	4.109606	5.00E-05	0.001651
GP1BA	5.660777	0.00018	0.00399
GP6	2.219139	0.00092	0.012171
GP9	2.584706	0.00073	0.010325
GPFR	3.041958	0.00335	0.028425
GPI	2.022304	0.00662	0.044265
GPR137	4.681595	5.00E-04	0.00807
GPR137B	4.447517	0.00027	0.00524
GPR172A	6.502525	0.00101	0.012919
GPR35	5.223439	0.00017	0.003858
GPR44	5.563528	0.00025	0.005017
GPR84	2.979355	0.00044	0.007351
GPX1	2.445281	0.00333	0.028292
GRAMD1B	6.906716	2.00E-05	0.00091
GRAP2	2.863937	0.0077	0.049035
GRB14	2.115502	0.00463	0.034899
GRHPR	8.207825	0.00347	0.029077
GRINA	7.878932	0	6.00E-06
GRN	3.693529	1.00E-05	0.000712
GRWD1	2.799172	0.0018	0.018637
GSN	2.952629	0.00688	0.045486
GSTO1	3.460547	0.00022	0.004571
GSTZ1	2.854029	0	0.000174
GTDC1	3.792108	0.00055	0.00857
GTPBP1	2.762549	0.00031	0.005854
GUCY1A3		0.00021	0.004432
GUSB	3.472561	0.00205	0.026413
GYG1	2.68887	0.00217	0.021032

GYS1	4.129594	0.00321	0.027589
H1F0	2.687007	0.00342	0.028814
H2AFJ	2.620787	0.00018	0.004012
H3F3A	3.845044	0.00325	0.027841
HAVCR2	2.950583	0.00096	0.012504
HBA1	4.216366	0.00181	0.018728
HBA2	3.721799	0.00262	0.024098
HBB	3.97237	0.00055	0.008559
HBD	2.713209	0.00609	0.041923
HBG1	8.190775	0.00012	0.002994
HBG2	2.205338	0.00048	0.007894
HBQ1	4.67187	0.00013	0.003218
HCFC1R1	4.490886	0.00025	0.005017
HCST	20.74943	0.00488	0.036009
HDAC10	11.18893	0	0.000128
HEATR1	4.325899	0	0.00029
HIP2	2.174977	0.00234	0.02219
HIST1H1C	2.529759	0.005	0.03672
HIST1H2AC	5.359134	0.00552	0.039265
HIST1H2AE	4.945101	1.00E-05	0.000359
HIST1H2AG	14.08414	0.0066	0.044158
HIST1H2BD	7.245072	0	0.000322
HIST1H2BE	6.408559	7.00E-05	0.00208
HIST1H2BG	5.27072	0.00013	0.003123
HIST1H2BH	2.239226	7.00E-04	0.010163
HIST1H2BJ	3.65786	0.00525	0.037881
HIST1H2BK	2.521007	4.00E-05	0.00155
HIST1H3F	2.475981	0.00665	0.04441
HIST1H3H	2.316586	0.00508	0.037061
HIST1H4H	4.836623	0.00146	0.016325
HIST2H2AC	8.681835	9.00E-05	0.002402
HIST2H2BE	2.019503	0.0013	0.015239
HIST2H3C	4.064281	0.00138	0.015706
HIST2H4A	2.425026	1.00E-05	0.000533
HK1	2.321408	0.00023	0.004701
HK3	6.13048	0.00792	0.049935
HLX	4.893952	0.00624	0.042573
HMGCL	3.955884	0.00047	0.007777
HMOX1	3.89062	0.00427	0.033211
HOMER2	10.73314	0.00133	0.015434
HOXC6	5.130146	2.00E-05	0.000859

HP	2.122846	0.00601	0.041416
HPS6	2.27521	0.00173	0.018173
HPSE	2.047694	0.00137	0.015655
HSPBL2	2.479415	0.00183	0.018843
HYAL2	9.29207	0.00222	0.021397
HYAL3	2.414961	0	0.000176
HYLS1	2.009728	0.00133	0.015377
ICAM4	4.425989	0.0031	0.026898
ICT1	6.164569	0.00174	0.018241
IER5L	3.882538	0.0013	0.015156
IFI27	2.45207	0.00486	0.035936
IFI30	2.089272	0.006	0.041393
IFI35	22.13105	0.00752	0.048284
IFIT1	9.787904	0.00121	0.014516
IFIT2	25.83043	9.00E-05	0.00239
IFIT3	16.81877	4.00E-05	0.001321
IFITM2	57.44064	0.00058	0.009002
IFITM3	65.70813	0.00016	0.003609
IFITM4P	14.96998	0.00012	0.003024
IFNGR2	3.716643	1.00E-05	0.000564
IGF2BP2	2.586498	4.00E-05	0.001323
IGFBP4	2.628063	0.00428	0.033258
IGFBP7	2.131693	0.00054	0.008557
IGSF2	2.080601	0.00757	0.048429
IL15	3.538162	0.00479	0.035644
IL15RA	8.224911	0.00287	0.025606
IL17RA	4.484664	3.00E-05	0.001117
IL1RN	3.698653	0.00057	0.008826
IL2RG	5.456591	0	6.30E-05
IL8RBP	3.160165	2.00E-04	0.004311
ILK	2.076279	0.00752	0.048284
IMPA2	5.021088	0.00206	0.020318
INF2	2.661058	0.00033	0.006094
INSL3	5.151527	0.00055	0.008642
IP6K1	7.846232	0.00019	0.004117
IRF2	10.40352	0.00035	0.006326
IRF5	18.20168	0	7.00E-06
IRX3	10.45412	0	8.00E-06
ISOC2	2.749177	0	2.90E-05
ITFG1	10.33166	0.00101	0.012947
ITFG3	2.463996	6.00E-05	0.001794

ITGA2B	2.662903	0	0.000226
ITGAM	4.401514	0.00432	0.033466
ITGB3	4.87702	0.00337	0.028472
ITGB5	3.668016	0.0042	0.032892
ITLN1	2.538542	0.0038	0.030901
ITPK1	9.107152	0.00596	0.041234
IVD	5.14439	1.00E-05	0.000669
JAK2	2.286277	1.00E-05	0.000662
JAM3	2.68887	3.00E-05	0.001308
JARID1C	6.788063	0.00046	0.007643
JOSD2	2.297397	0.00172	0.018151
KCNJ15	3.294364	0.00066	0.00969
KCNJ2	2.350553	0.00032	0.00596
KCNMA1	2.403272	0.00186	0.019025
KCNMB1	3.688412	0.00093	0.012173
KCTD21	5.105315	0.00017	0.003795
KDEL2	2.231479	0	1.50E-05
KEAP1	2.952629	0.00201	0.020007
KIAA0040	2.505329	0.00052	0.008309
KIAA0319L	2.668446	0.00559	0.039566
KIAA0460	4.65248	0.00311	0.026925
KIAA0513	20.59183	1.00E-05	0.000658
KIAA1539	3.640155	0.00183	0.018843
KIAA1602	2.846127	0.00477	0.035602
KIAA1618	5.45281	0.00049	0.008007
KIAA2013	5.151527	0.00142	0.016038
KIF1B	7.568461	7.00E-05	0.002036
KIF2A	4.429058	0.00169	0.017975
KIFC3	25.86627	0	3.60E-05
KIR2DL1	2.66475	0	4.00E-05
KIR2DS3	2.440201	0.00053	0.008429
KIR2DS5	4.743658	0.00106	0.01336
KIR3DL1	4.106758	0.00348	0.029113
KIR3DL2	3.403455	5.00E-05	0.001748
KIR3DL3	2.628063	1.00E-05	0.000405
KLHDC8B	2.804999	0.00628	0.042779
KLHL18	2.477697	0	0.00027
KLHL5	2.375119	2.00E-05	0.001008
KLHL9	2.283109	0.00611	0.042008
KPNA6	5.112397	4.00E-04	0.006894
KRT75	6.745849	0.00025	0.004983

KRT8P9	2.205338	1.00E-05	0.000449
KYNU	7.195026	0.00119	0.014403
LAMP2	4.979497	0	0.000279
LAP3	4.897346	0.00051	0.008201
LAPTM4B	5.68831	9.00E-05	0.002472
LCN2	2.159953	0.00039	0.006837
LCP1	2.168955	0.00084	0.01142
LGALS12	2.371829	0.0042	0.032918
LGALS3BP	3.714067	0.00091	0.012088
LGALS9	4.662165	3.00E-05	0.001293
LGALS9B	2.952629	0.00048	0.007828
LHFPL2	3.582583	0.0014	0.015859
LILRA6	3.401097	0.00344	0.028902
LILRB2	4.87702	0.00301	0.026377
LILRB4	72.10363	0.00287	0.025582
LIMK1	3.092985	0	1.40E-05
LMNA	3.231043	0.00085	0.011513
LONRF1	8.901201	6.00E-05	0.00198
LOXL3	3.231043	1.00E-05	0.000722
LPAR5	4.601168	9.00E-05	0.002412
LPCAT3	5.049008	1.00E-05	0.000578
LPPR2	3.110184	0.00225	0.021544
LRG1	2.77791	5.00E-05	0.001627
LRP10	2.703822	0.0017	0.017975
LRP3	2.319799	3.00E-05	0.001227
LRRC25	2.076279	0.00012	0.003016
LRRC28	2.844155	0.00149	0.016518
LRRC33	2.199232	0.00044	0.007326
LRRC42	7.775848	0.00661	0.044209
LSP1	2.118437	0.00014	0.0034
LST1	3.237769	0.00244	0.022877
LTB4R	3.131817	0.00023	0.004704
LTBR	2.852051	0.00011	0.00293
LY6E	2.783693	0.00121	0.014538
LY6G5C	3.545527	0.00019	0.004222
LY6G6F	3.487033	0.00355	0.029492
LYN	2.016705	6.00E-05	0.001824
LYPD1	2.228387	0.00025	0.004983
LZTS2	3.361255	0.0019	0.019321
MAFB	3.294364	0.0043	0.033406
MAGED2	2.20381	2.00E-05	0.001033

MANBAL	2.1206	3.00E-05	0.001204
MAP1A	2.668446	1.00E-05	0.000468
MAP1LC3A	5.007186	4.00E-05	0.001313
MAP1S	3.058873	5.00E-05	0.001606
MAP3K11	3.24226	0.00017	0.003937
MAP3K7IP1	2.718856	0.00016	0.00368
MAPK1	2.240778	0	1.40E-05
MAPK14	2.140577	0	9.00E-06
MAPK3	3.129647	0.00012	0.003024
MAPK7	10.27453	0	4.90E-05
MAPRE3	9.513657	0.00016	0.003609
MAX	2.995922	1.00E-05	0.000603
MAZ	2.521007	3.00E-05	0.001291
MBNL3	2.465705	8.00E-05	0.00228
MCAT	2.557971	0	3.60E-05
MCM6	2.214529	0	7.30E-05
MCOLN1	2.720742	0	0
MCTP1	2.200757	0	5.00E-05
MEA1	6.520579	0	5.00E-06
MED12	4.85678	0.00012	0.003021
MED15	4.853414	0	4.00E-06
MED17	2.581125	0.00045	0.00755
MED20	2.194664	0	4.00E-05
MED25	2.747272	4.00E-05	0.001321
MED8	2.508804	0	0
MEIS1	5.609997	0	1.00E-06
MEN1	2.897884	0.00698	0.045993
MESDC1	2.536783	0.00121	0.014516
METRNL	3.294364	1.00E-05	0.000369
METTL7B	2.185555	0	2.00E-05
MFAP1	4.307946	0	0.000128
MFAP3L	3.020945	0.00183	0.018843
MFSD5	2.019503	0	5.00E-06
MFSD6	5.505982	0.00264	0.024163
MGAT1	2.510544	0	1.40E-05
MGAT4B	2.581125	2.00E-05	0.00074
MGC13005	4.228072	0	8.00E-06
MGC13057	5.966976	0.00058	0.009002
MGC20983	4.883786	0	5.80E-05
MGC4677	2.306971	9.00E-05	0.00251
MGC70857	2.223758	0	4.50E-05

MGC71993	3.078014	2.00E-05	0.000834
MGLL	5.91345	0	1.20E-05
MGRN1	8.3861	1.00E-05	0.000564
MGST1	2.840215	2.00E-05	0.000804
MICALL1	5.183764	0	0.000322
MICB	3.969617	0	0.000249
MIER1	3.595021	0	8.00E-05
MIER2	4.106758	0	5.80E-05
MINK1	2.566852	1.00E-05	0.000606
MIR1974	2.009728	0.00485	0.03587
MIR1978	3.77637	2.00E-05	0.001019
MIR223	5.763719	4.00E-05	0.001362
MIR574	4.132458	0	0.000146
MIR586	2.622604	0	0.000174
MLST8	5.832038	1.00E-05	0.000665
MLYCD	2.617156	0	3.10E-05
MMD	4.231004	0	2.00E-05
MMP25	11.26675	0	7.40E-05
MMP9	3.545527	0	2.00E-06
MMRN1	2.371829	0	6.00E-06
MNT	3.6782	0	4.00E-05
MOBK1B	4.310933	0.00125	0.014821
MOSC1	2.844155	0	0.000314
MOSPD3	3.384634	0.00011	0.002914
MPL	3.866424	0.00013	0.00317
MPND	2.291036	0	0.00029
MPP1	7.270225	0	0
MPV17L2	3.310387	0	0.000123
MPZL1	7.402435	9.00E-05	0.002553
MRPL2	10.18236	0	4.20E-05
MRPL27	7.840795	2.00E-05	0.000859
MRPS12	4.18144	0	0.000112
MS4A3	18.83051	0	2.90E-05
MS4A4A	2.181015	0	7.00E-06
MS4A7	2.097979	6.00E-05	0.001794
MSC	2.348924	3.00E-05	0.001261
MSRB2	2.234574	9.00E-05	0.00249
MSRB3	2.964934	0	0.000113
MT1A	3.582583	2.00E-05	0.001019
MT1E	4.245693	5.00E-04	0.008081
MT2A	3.382289	9.00E-05	0.00239

MTE	3.160165	0.00131	0.015251
MTF1	6.2941	0	0.000108
MTFR1	5.559673	0	1.10E-05
MTHFD1	5.775717	7.00E-05	0.002103
MTMR14	4.325899	0.00201	0.019987
MTMR3	2.121375	3.00E-05	0.001291
MTRF1L	3.904127	0	0.00017
MTSS1	4.617142	0.00037	0.006595
MUL1	3.747686	0	0.000261
MXD1	6.448663	1.00E-05	0.000681
MYD88	5.676493	0	0.000176
MYL6	3.2898	5.00E-05	0.001748
MYL9	2.86791	0.00212	0.020756
MYLK	5.017609	0	1.70E-05
MYO1C	2.488023	1.00E-05	0.000669
MYO7A	4.962269	1.00E-05	0.000663
MYOF	2.975228	7.00E-05	0.001991
NACA2	4.307946	0	8.00E-06
NACC1	3.123146	0	7.40E-05
NAGPA	2.337554	0	8.00E-05
NAPA	3.724379	1.00E-05	0.000722
NAT15	3.351949	0.00032	0.00595
NAT8B	2.648178	6.00E-05	0.001853
NBAS	3.668016	0	0.000265
NCOA4	5.836081	0	0.000115
NDUFAF3	3.129647	7.00E-05	0.002106
NDUFV2	2.928171	0.0013	0.015239
NEFH	7.300524	0.00024	0.004858
NEU1	3.326488	1.00E-04	0.00264
NEXN	2.581125	1.00E-05	0.000663
NFATC1	5.876675	8.00E-05	0.002348
NFE2	3.006323	6.00E-05	0.001944
NFIB	2.60991	1.00E-05	0.000679
NFIC	4.556734	0.00059	0.00903
NFKB2	2.310172	3.00E-05	0.001204
NFKBIB	2.6926	3.00E-05	0.001117
NFKBIE	4.873641	2.00E-05	0.000808
NGFRAP1	4.260433	0	6.00E-06
NINJ2	3.547985	0.00049	0.008022
NLRC4	2.016705	0.00048	0.007894
NLRP12	4.355988	1.00E-05	0.000567

NLRP3	3.18877	0	8.60E-05
NLRX1	4.665397	0.00115	0.014076
NME4	4	4.00E-05	0.001418
NOC4L	3.246758	0.00225	0.021569
NOMO2	3.264812	3.00E-05	0.001266
NP	3.610003	0.00181	0.018704
NPEPPS	4.061464	0	0.000137
NPL	2.209929	0.00068	0.009968
NQO2	5.559673	1.00E-05	0.000712
NR1I2	2.810837	0.00012	0.003076
NRBF2	2.226843	0.00035	0.006326
NRBP1	3.797368	0.00042	0.007099
NRGN	2.118437	1.00E-05	0.000565
NRM	4.030615	0.00503	0.036819
NSDHL	5.183764	0	3.60E-05
NT5DC2	3.518596	0.00063	0.00942
NT5M	3.936736	0.00014	0.0034
NUCB1	24.42015	4.00E-05	0.001341
NUDT18	7.500569	0	9.00E-06
NUDT5	2.604488	0	3.00E-06
NUP214	3.24901	0.00551	0.039244
OAF	2.134651	3.00E-04	0.005711
OAS1	5.194554	0.00169	0.017975
OAS2	2.842184	0.00027	0.005249
OAS3	12.295	0.00186	0.019022
OASL	10.87543	0	0.00023
OBFC2B	3.877159	9.00E-05	0.002445
ODF3B	2.097979	0.00069	0.010048
OGDH	2.022304	0.00012	0.002935
OLFML2B	3.235525	0.00055	0.00857
OPLAH	4.01667	0.001	0.012801
ORAI2	2.237674	1.00E-05	0.000468
ORM1	4.665397	1.00E-05	0.000708
OSBP2	5.5098	0	0.000114
OSCAR	2.922089	0	4.40E-05
OXER1	2.111107	0	1.00E-06
OXTR	7.007987	7.00E-05	0.00208
P2RX1	2.087824	0	3.00E-06
P2RX7	3.665475	0.00071	0.010184
P2RY13	8.730111	0	0.000279
P4HB	7.265187	0.00404	0.032067

P704P	6.736504	0.00103	0.01307
P76	2.844155	0.00574	0.040248
PA2G4	3.031433	7.00E-05	0.001991
PACS1	6.988583	1.00E-05	0.000383
PACSN2	2.066229	1.00E-04	0.00264
PADI4	2.703822	0	0.000192
PAK1	4.254531	0.00469	0.035223
PAQR4	4.658934	0.00093	0.012243
PARP9	3.453358	0.0011	0.013725
PARVB	3.786855	7.00E-05	0.002073
PCBD1	2.599078	0.0077	0.049035
PCDHGB6	2.334316	0	0.000161
PCGF1	3.708922	0.00263	0.024128
PCIF1	2.690734	4.00E-05	0.001489
PCK2	4.075565	0.00172	0.018151
PCSK6	2.590086	0.00446	0.034173
PCTK3	2.436821	1.00E-05	0.000449
PDCD1	2.31498	0.00015	0.003529
PDE5A	2.593679	1.00E-05	0.000668
PDGFRB	5.708058	0.00022	0.004569
PDLIM1	4.509602	0	4.00E-06
PDLIM7	4.398465	0.00237	0.022363
PDZK1IP1	3.773753	6.00E-05	0.001869
PECAM1	2.302179	2.00E-05	0.000789
PEF1	2.51926	1.00E-05	0.000502
PELO	5.892991	0.00147	0.016432
PEMT	3.786855	0.00023	0.004804
PEPD	3.67056	0.00284	0.025402
PF4	3.6782	0.00017	0.003858
PF4V1	3.821132	0.00763	0.048683
PFKFB4	3.716643	0.00264	0.024163
PFKL	6.448663	0.00119	0.014382
PFTK1	2.399943	8.00E-05	0.002317
PGA3	2.629886	0.002	0.01989
PGD	6.413003	0.00013	0.003123
PGLYRP1	2.901904	1.00E-05	0.000363
PGM2	4.152557	2.00E-05	0.000812
PGRMC1	2.430074	1.00E-04	0.002686
PHCA	3.698653	1.00E-05	0.000396
PHF13	5.81186	0.00111	0.013822
PHF19	3.673105	0.00048	0.007893

PIK3R4	4.707627	0.00338	0.028568
PILRA	2.96288	0	9.00E-05
PIP5K1C	2.046275	0.00525	0.03789
PITPNM1	2.45207	0.0013	0.015156
PKM2	2.911979	0	0.000285
PKN1	3.052518	0.00624	0.042573
PLA2G15	4.11816	0.00222	0.021379
PLA2G4C	3.00424	0.0026	0.023982
PLAGL2	9.208716	0.00061	0.009193
PLB1	8.168097	0.00216	0.020987
PLCG2	2.899894	0.00505	0.036928
PLD1	3.037743	0.00012	0.003043
PLEKHO2	3.377604	3.00E-04	0.00573
PLOD3	2.139094	0.00313	0.027088
PLTP	2.355446	9.00E-05	0.002496
PLXDC2	2.332699	3.00E-05	0.001268
PLXNB2	5.180172	0.00187	0.019124
PLXNB3	6.00848	2.00E-05	0.000786
PNKD	2.646343	0.00086	0.011606
PNMA1	2.212995	0.00419	0.032869
PNPLA2	4.447517	0.00147	0.016432
POLDIP3	3.89062	3.00E-05	0.001112
POLR2A	8.213516	0.00071	0.010204
POR	4.829922	0.00671	0.044691
POTEF	2.779836	3.00E-05	0.001082
POU2F2	2.718856	5.00E-05	0.001665
PPARG	3.084422	0.00436	0.033627
PPBP	7.320793	0.00072	0.010304
PPDPF	2.114036	0.0012	0.014443
PPIL5	3.18877	4.00E-05	0.001355
PPM1D	4.846691	0.00349	0.029168
PPP1R3D	3.424753	0.00537	0.038517
PPP2R1A	2.579337	0.00113	0.013921
PPP2R4	3.394032	0.00035	0.006286
PRAM1	2.008335	0	6.00E-06
PRDX6	3.02304	0	0.000128
PRELID1	2.108183	5.00E-05	0.001651
PRKCD	3.092985	0.00136	0.015574
PRMT7	3.301222	0.00036	0.00642
PROS1	2.472551	0.00756	0.048384
PRPF8	3.027234	0	0.000146

PRRT3	8	0.00039	0.006837
PRUNE	28.80006	0	0.000239
PSAT1	2.911979	0	0.000319
PSEN2	3.745089	0.00092	0.012171
PSENEEN	2.536783	0	1.00E-06
PSRC1	3.114499	0.00309	0.026838
PTAFR	2.475981	0.00407	0.032202
PTCRA	4.829922	0	1.40E-05
PTGIR	2.559745	0	0.000156
PTGS1	2.51926	0.00043	0.007262
PTK2	2.148009	0	9.60E-05
PTK2B	3.680751	0.00044	0.007351
PTMS	7.003131	0.00124	0.014721
PTPN23	2.206867	0.002	0.01989
PTPN6	2.8481	0.00114	0.014027
PTPRA	4.432129	0.00729	0.047312
PTPRN	8.202138	0.00333	0.028267
PTPRO	3.082284	3.00E-05	0.00122
PTRH2	2.563296	0	8.60E-05
PTTG1IP	2.05908	0.00032	0.00595
PVALB	3.020945	0.00045	0.007533
PVRL2	2.409945	2.00E-04	0.004311
PWWP2	7.190041	0.00142	0.016038
PWWP2B	28.18782	0.00103	0.013075
PYCARD	2.642677	0.00019	0.004192
PYGL	5.263418	0.00739	0.047706
QPCT	3.431882	1.00E-05	0.000359
QPRT	2.16595	0	0.000304
QSOX1	2.170459	0.00147	0.016432
RAB11FIP1	2.206867	0	0.000256
RAB13	4.779965	1.00E-04	0.002589
RAB1B	3.26255	0.00213	0.020766
RAB31	2.87388	0.00076	0.010631
RAB32	3.434262	7.00E-04	0.010163
RAB37	3.324183	0.00471	0.035303
RAB5C	2.496661	0	0.00027
RAB6A	2.493202	0	0.00012
RAB8A	2.491475	0.00161	0.017407
RAC1	2.488023	0.00722	0.047069
RACGAP1	2.488023	0.00025	0.005017
RANBP3	2.488023	0.00014	0.003408

RARA	2.488023	0	0.000304
RASGRP4	2.482855	4.00E-05	0.001337
RAVER1	2.481135	0.0029	0.025806
RBCK1	2.481135	0.00068	0.009995
RBM18	2.479415	0.00505	0.036928
RBM42	2.479415	0.00176	0.018425
RBM47	2.477697	0	7.00E-06
RBPS2	2.477697	4.00E-05	0.001455
RC3H2	2.475981	0.00081	0.011153
RENBP	2.475981	0.00019	0.004117
REPS2	2.475981	7.00E-05	0.002036
RGL1	2.472551	0.00012	0.002962
RGS18	2.469125	1.00E-05	0.000662
RHBDD1	2.469125	0.00154	0.016908
RHBDD3	2.467414	0.00601	0.041416
RHOBTB1	2.467414	0.00329	0.028048
RHOC	2.465705	0.00025	0.004983
RHOG	2.465705	0	1.50E-05
RIN1	2.463996	0.00097	0.012537
RIN2	4.416795	7.00E-05	0.002005
RIT1	2.488023	0.00076	0.010612
RMI1	2.268911	6.00E-04	0.009119
RMND5B	3.193194	0.00091	0.012102
RNASE1	7.819086	0	6.00E-06
RNASE2	2.547355	0.00225	0.021544
RNASE3	2.170459	5.00E-05	0.001699
RNASE4	7.120606	0	2.60E-05
RNASEH2A	3.114499	0.00033	0.006094
RNF135	2.450371	7.00E-05	0.00208
RNF149	3.303511	0.00017	0.003839
RNF185	2.150989	6.00E-05	0.001952
RNF19B	3.538162	0.00013	0.003164
RNF213	3.231043	0.00051	0.008201
RNF24	2.620787	0.00374	0.03061
RNY1	2.467414	0.00305	0.026645
ROPN1L	2.12874	0.00035	0.006351
RP11-529I10.4	2.159953	0.00078	0.010774
RPL23AP13	2.728296	0.0066	0.044158
RPL31P10	2.278367	3.00E-05	0.001119
RPL39L	3.673105	2.00E-05	0.000839
RPN1	2.752991	0	0.000179

RPP25	2.32624	1.00E-05	0.000419
RRAGD	30.06473	0.00136	0.015574
RRAS	29.60974	0.00201	0.020013
RRBP1	29.18186	1.00E-05	0.000643
RRM2	28.80006	9.00E-05	0.002472
RTN2	28.18782	0.00047	0.007777
RTN3	27.43603	8.00E-05	0.002287
RTP4	25.93808	6.00E-05	0.001944
RUFY1	25.86627	0.0042	0.032892
RUNDC1	25.83043	0.00287	0.025582
RYR1	24.42015	0.00528	0.038004
S100A11	24.42015	3.00E-05	0.001054
S100A12	23.96737	0.00415	0.032659
S100P	22.13105	0.00014	0.003311
SAC3D1	21.55574	0.00465	0.034988
SAMD14	21.30323	0.00224	0.021478
SAMD4A	20.74943	1.00E-05	0.000363
SAMD4B	20.59183	9.00E-05	0.002402
SAPS1	19.83532	0.00171	0.018088
SAR1B	19.3063	0.00082	0.011215
SART3	18.94835	0.00062	0.009306
SASH3	18.83051	0.00024	0.004902
SBNO2	18.20168	0	6.00E-06
SCARB2	16.81877	0.00018	0.003952
SCD	16.79547	0.00062	0.009324
SCGB1C1	16.18965	0.00124	0.014757
SCLY	15.21055	8.00E-05	0.002307
SDCBP	15.11595	0	0.000282
SDPR	15.01154	0.00029	0.005627
SEC14L1	14.96998	0.00389	0.031398
SEC14L5	14.65174	1.00E-05	0.000681
SELP	14.08414	0	7.90E-05
SELT	14.01597	0.00048	0.007865
SEMA4A	13.90951	0	0.000202
SEMA4B	13.89987	0.00348	0.029113
SEPHS2	13.85179	0.00052	0.008309
SEPN1	13.46367	0.00014	0.003261
SEPX1	12.90627	0.00732	0.04745
SERPINA1	12.64943	0.00053	0.008429
SERPINB1	12.295	0.00015	0.003533
SERPING1	12.20161	0.00056	0.008681

SETD1A	12.09216	2.00E-05	0.000898
SFRS15	12.00863	0.00153	0.016848
SFT2D2	11.98369	0.00092	0.012173
SFXN5	11.81052	0	0.000295
SGPL1	11.78598	3.00E-04	0.005733
SGTA	11.75335	0.00044	0.007402
SH2D3C	11.53543	0.00027	0.00524
SH3BGRL2	11.50349	0.00025	0.005017
SH3BGRL3	11.49552	0	1.40E-05
SH3BP1	11.26675	0.00018	0.004087
SH3BP5L	11.22777	0.00663	0.044336
SH3PXD2B	11.18893	0.00048	0.007828
SHC1	11.08856	0	0.000163
SHKBP1	10.98909	0.00045	0.007548
SIAH2	10.87543	1.00E-05	0.000658
SIGLEC10	10.7704	0.00102	0.012947
SIGLEC5	10.73314	2.00E-05	0.000882
SIGLEC7	10.659	0.0048	0.035695
SIGLEC9	10.45412	0.00012	0.002963
SIL1	10.40352	0.00185	0.018975
SIRPA	10.33166	0	5.80E-05
SIRPB1	10.27453	0.00025	0.005069
SIRT2	10.18236	0	0.000156
SKA2	10.11904	0.00025	0.004977
SLA	10.0005	0.00611	0.042008
SLA2	9.917662	0.00022	0.004602
SLAMF7	9.787904	2.00E-05	0.001022
SLC10A3	9.693381	5.00E-05	0.001657
SLC16A3	9.673245	1.00E-05	0.000578
SLC1A5	9.619754	0.00053	0.008429
SLC22A18AS	9.513657	0.00309	0.026838
SLC24A3	9.513657	0	0.000164
SLC24A4	9.467608	9.00E-05	0.002464
SLC25A11	9.454492	0.00029	0.005614
SLC29A1	9.434853	0.00015	0.003494
SLC29A3	9.330795	0	0.000203
SLC31A2	9.298513	0.00045	0.007526
SLC35D2	9.29207	8.00E-05	0.002316
SLC37A1	9.259922	1.00E-05	0.000395
SLC38A10	9.208716	0.00488	0.036009
SLC39A11	9.13877	6.00E-05	0.001893

SLC39A14	9.107152	0.00057	0.008826
SLC39A3	9.107152	0	3.80E-05
SLC40A1	9.081937	2.00E-05	0.000952
SLC43A3	9.044245	0.00636	0.043144
SLC45A3	9.019203	0.0016	0.017274
SLC4A2	8.913549	3.00E-05	0.001204
SLC6A12	8.901201	0.00637	0.043192
SLC7A3	8.851979	0	0.000128
SLC7A7	8.809133	0.00021	0.004509
SLC9A1	8.748284	0.00101	0.012919
SLC9A4	8.730111	0.00038	0.006712
SLC9A9	8.693879	0.00012	0.003053
SLFN11	8.681835	0.00135	0.015517
SLITRK4	8.681835	0	3.60E-05
SMARCC2	8.597993	0.00187	0.019092
SMARCD3	8.56231	0.00174	0.018241
SMOX	8.479622	0.0057	0.040075
SMPD1	8.479622	0.00707	0.046385
SMPD2	8.456144	0.00337	0.028472
SMPDL3A	8.3861	0	4.50E-05
SMTN	8.299359	0.00017	0.003768
SNCA	8.224911	0.00327	0.027968
SNN	8.213516	0.00366	0.03007
SNORD48	8.207825	0.00028	0.005447
SNORD95	8.202138	0.00311	0.026925
SNX11	8.190775	0.00027	0.005269
SNX17	8.168097	0.00234	0.02219
SNX8	8.162437	0.00033	0.006094
SOD2	8.1173	0.00132	0.015358
SORT1	8.106055	6.00E-05	0.001968
SP2	8.016653	0.00174	0.018305
SPA17	8.011098	0	1.00E-06
SPARC	8.005547	0.00031	0.005804
SPATS2L	8	4.00E-05	0.001341
SPHK1	7.889862	0.00142	0.015964
SPI1	7.878932	1.00E-05	0.000533
SPOCD1	7.857117	0.00128	0.015032
SPRYD4	7.846232	0.00662	0.044264
SPTLC2	7.846232	0.00138	0.015706
SRC	7.840795	0	0.000197
SRCAP	7.840795	0	0.000172

SREBF1	7.819086	0.00128	0.015085
SRM	7.792034	0.00022	0.004592
SRXN1	7.775848	0.00015	0.003477
SSSCA1	7.743576	0.00012	0.003029
ST14	7.738211	0.00431	0.033409
ST7	7.69542	0.00383	0.031071
ST8SIA4	7.658172	0.00196	0.019673
STAB1	7.594737	1.00E-05	0.000669
STARD8	7.568461	0.00082	0.011192
STAT1	7.521394	0.00182	0.018748
STBD1	7.510974	0.00262	0.024098
STEAP3	7.500569	0.00066	0.009684
STK10	7.417844	0.00133	0.015434
STK40	7.402435	4.00E-05	0.001557
STOM	7.320793	0.00018	0.004058
STRN4	7.310652	0.00072	0.010294
STX1A	7.305586	0.00316	0.02727
STX5	7.300524	0.00721	0.04704
STXBP2	7.29041	0.00759	0.048483
SUPT6H	7.275266	0.00016	0.003718
SUSD1	7.270225	0.00059	0.009119
SYK	7.265187	0.00156	0.017062
SYMPK	7.245072	0.00077	0.01072
SYNM	7.240052	0	2.60E-05
SYTL4	7.210004	0.00394	0.031611
SYVN1	7.195026	0.00374	0.030606
TACO1	7.190041	0.0028	0.025141
TADA3	7.145327	0.00342	0.028814
TAF10	7.120606	0	0.000117
TAGLN	7.09597	0.00039	0.006771
TAL1	7.076323	1.00E-05	0.000548
TALDO1	7.032316	0.00208	0.020484
TAOK2	7.007987	0.00018	0.00399
TAX1BP3	7.003131	0.00202	0.020026
TBC1D2	6.998278	0.00261	0.024048
TBC1D24	6.988583	5.00E-05	0.001748
TBC1D8	6.988583	2.00E-04	0.00432
TBL2	6.906716	0.00032	0.005938
TBXA2R	6.887594	4.00E-05	0.001548
TBXAS1	6.830542	0	0.00029
TCF7L2	6.80691	0.00357	0.029617

TCN1	6.788063	0	0.000146
TCN2	6.745849	0.0019	0.019323
TES	6.745849	1.00E-05	0.00054
TESC	6.736504	0.00019	0.004117
TFIP11	6.736504	0.00015	0.00351
TFPI	6.72251	0.00212	0.020755
TGFB11I	6.703897	1.00E-05	0.000533
TGM2	6.597868	0.00014	0.003304
THEM2	6.575041	0	0.000315
THOC5	6.561383	0.00177	0.018518
TICAM2	6.556837	0	4.00E-05
TIMP1	6.538683	2.00E-05	0.000769
TIMP2	6.520579	0.00588	0.040835
TJP2	6.502525	0	9.60E-05
TLE3	6.502525	2.00E-05	0.000763
TLN1	6.475538	0.001	0.012808
TLR2	6.448663	0.00173	0.018182
TLR7	6.448663	6.00E-05	0.001888
TLR8	6.448663	2.00E-05	0.000867
TLR9	6.413003	0.00609	0.041923
TM9SF1	6.408559	0.00027	0.005363
TM9SF4	6.399681	0.00024	0.004888
TMCC2	6.395247	4.00E-05	0.001455
TMCO4	6.386387	0.00011	0.002759
TMEM104	6.346671	0.00427	0.033211
TMEM11	6.2941	0	0.000239
TMEM111	6.276673	1.00E-05	0.00035
TMEM127	6.272324	0.00043	0.007191
TMEM140	6.220368	0.00063	0.00942
TMEM158	6.164569	0.00158	0.017143
TMEM177	6.164569	0.00182	0.018748
TMEM185A	6.151763	0.00394	0.031635
TMEM189	6.13048	0.00112	0.013844
TMEM214	6.117745	0.00705	0.046333
TMEM217	6.062866	0.00051	0.008231
TMEM219	6.050272	0.00258	0.023803
TMEM229B	6.00848	0.00041	0.007027
TMEM40	6.00848	0.0011	0.013676
TMEM49	6.00848	0.00614	0.042131
TMEM60	5.991844	0	0.00018
TMSB4X	5.991844	0.00441	0.033915

TMTC1	5.966976	0.00502	0.036802
TNFAIP6	5.938094	0.00133	0.015434
TNFAIP8L2	5.93398	0.00408	0.032248
TNFRSF1B	5.921653	5.00E-05	0.001561
TNFRSF8	5.91345	0.0032	0.027524
TNFSF10	5.892991	0.00486	0.035936
TNFSF13	5.888907	1.00E-04	0.002672
TNFSF13B	5.876675	0.00033	0.006088
TNIP1	5.868533	0.0057	0.040075
TNNC2	5.856343	2.00E-05	0.000878
TNNT1	5.856343	0.00014	0.003273
TNS3	5.852285	0.00252	0.023408
TOX2	5.84823	0.00104	0.013147
TP53	5.836081	0.00069	0.010092
TP53I3	5.832038	0.00273	0.024742
TP53RK	5.81186	0.00096	0.012504
TPI1	5.81186	0.00038	0.006719
TPM1	5.775717	2.00E-04	0.004312
TPM4	5.763719	0.00162	0.017437
TPP1	5.763719	0.00053	0.008426
TRAF7	5.759725	0.00075	0.010591
TRAFD1	5.755734	1.00E-05	0.000405
TRAPPC9	5.735821	0.0071	0.046521
TREML1	5.735821	0.00035	0.006286
TREML2	5.708058	0.00053	0.008429
TREML3	5.708058	0.00561	0.039706
TRIB3	5.696201	2.00E-05	0.000851
TRIM14	5.68831	0.00031	0.005854
TRIM21	5.680429	0.00172	0.018173
TRIM47	5.676493	0.00132	0.015358
TRIM58	5.660777	5.00E-04	0.008085
TRIOBP	5.652935	5.00E-05	0.001656
TRIP6	5.645103	0.0011	0.013697
TSC22D1	5.621675	0.00336	0.02845
TSC22D4	5.609997	0	2.00E-06
TSEN34	5.602225	0.00029	0.005522
TSG101	5.594464	0.00294	0.025978
TSPAN33	5.575109	2.00E-05	0.000733
TSPAN9	5.563528	0.00027	0.005304
TST	5.559673	0.00061	0.009239
TTC7A	5.559673	0.00731	0.047414

TTYH3	5.559673	0.00077	0.010682
TUBA3D	5.559673	1.00E-05	0.00043
TUBB1	5.532763	0.00042	0.007083
TUBB4	5.5098	0.00099	0.012747
TUBG1	5.505982	4.00E-05	0.001397
UBA1	5.490738	0.00025	0.005069
UBE2C	5.460375	0.00193	0.019474
UBE2D4	5.456591	0	0.000147
UBE2L3	5.45281	0.00263	0.024108
UBE2L6	5.433945	0.00163	0.01751
UBL4A	5.433945	0.00632	0.042952
UBTD1	5.4189	0.00055	0.008559
UBXN6	5.359134	0.00073	0.010325
UCP2	5.35171	0.00478	0.035643
UNC93B1	5.333195	3.00E-05	0.001186
UPK3A	5.303703	4.00E-05	0.001323
UQCC	5.289018	8.00E-05	0.002361
UQCRC1	5.281691	3.00E-05	0.001293
USP21	5.274374	0.00474	0.035433
USP5	5.27072	0.00016	0.003592
VAC14	5.267068	2.00E-05	0.000778
VASH1	5.263418	2.00E-05	0.000771
VAT1	5.256127	0.00242	0.022706
VCL	5.256127	0	6.30E-05
VEGFB	5.252485	2.00E-05	0.000952
VISA	5.223439	0.0018	0.018637
VKORC1L1	5.208977	0.00079	0.01097
VNN2	5.205367	0.00017	0.003795
VPS18	5.201761	0.00673	0.044799
VPS37C	5.194554	0.00279	0.02506
VSIG4	5.190955	0	0.000194
VSTM1	5.183764	0.00039	0.006788
VTA1	5.183764	0.00761	0.048583
VWA5A	5.180172	0.00126	0.014887
VWF	5.180172	0.00738	0.047685
WARS	5.151527	0.00205	0.020289
WAS	5.151527	6.00E-05	0.001824
WASF3	5.151527	2.00E-05	0.000954
WBP2	5.151527	0.00547	0.039046
WBSCR16	5.14439	0.00015	0.003471
WDR1	5.140825	0.0038	0.030901

WDR40A	5.130146	8.00E-05	0.002333
WIBG	5.115942	0.00133	0.015418
WIPI1	5.112397	0.00102	0.013008
WIPI2	5.105315	0.00336	0.028427
WNT5B	5.101778	4.00E-05	0.00155
XK	5.101778	0.00108	0.013519
XKR8	5.09471	1.00E-05	0.000369
XPNPEP1	5.087652	7.00E-05	0.002126
XRCC6	5.080604	0.00376	0.030696
YIPF1	5.080604	0.00013	0.003119
YIPF6	5.049008	0.00034	0.006211
YWHAE	5.03852	0.00477	0.035602
YWHAH	5.035029	0.00054	0.008448
ZBTB3	5.021088	5.00E-04	0.008107
ZBTB9	5.017609	3.00E-05	0.001039
ZC3H10	5.007186	6.00E-05	0.001945
ZCCHC17	4.996785	6.00E-05	0.001841
ZDHHC24	4.986405	0.00469	0.035225
ZFHX3	4.979497	0.00189	0.019259
ZFYVE21	4.969153	0	8.90E-05
ZKSCAN5	4.962269	0.0012	0.014443
ZNF16	4.962269	0.00208	0.020487
ZNF185	4.955395	0.00181	0.018704
ZNF189	4.945101	7.00E-05	0.002005
ZNF200	4.931409	0.00047	0.007741
ZNF213	4.927992	0.00344	0.028902
ZNF271	4.914348	0.00167	0.01787
ZNF282	4.910943	0.00148	0.016502
ZNF322A	4.90754	0.00435	0.033571
ZNF341	4.90754	0.00212	0.020755
ZNF35	4.904139	0.00156	0.017036
ZNF385A	4.897346	0.00381	0.03094
ZNF408	4.893952	0.00052	0.008286
ZNF503	4.883786	0.00604	0.041584
ZNF524	4.880402	3.00E-05	0.001269
ZNF564	4.87702	0.00355	0.029492
ZNF574	4.87702	0.00736	0.047607
ZNF580	4.873641	0.00485	0.03587
ZNF581	4.85678	0.00011	0.002788
ZNF646	4.85678	1.00E-05	0.000438
ZNF696	4.853414	0.00038	0.006645

ZNF746	4.846691	0.00015	0.003592
ZNF775	4.839976	0.00287	0.025606
ZNF79	4.839976	0.00032	0.005999
ZNF828	4.836623	0.00734	0.047566
ZSWIM3	4.833271	0.00064	0.009475
ZYX	4.829922	0.00034	0.006261

Genes down regulated in <i>P.falciparum</i> (F)	FC<-2 (in -ve)	P value	FDR corrected P value
ABCC5	2.286276671	0.00146	0.023432
ABL1	2.148008943	0.00068	0.042486
ABLIM1	2.413287839	0.00021	0.010409
ACACB	2.993845974	0.00666	0.003592
ACAD11	2.308570835	0.00255	0.002865
ACCS	2.037782393	1.00E-05	0.000155
ACPL2	2.433444717	0.00015	0.000369
ACTR5	2.143546925	0.00035	0.036212
ACYP1	2.566851795	0.0019	0.009075
ADARB1	2.617156143	0.00602	0.004301
ADCY7	3.535710124	2.00E-05	0.002174
ADD3	2.074839873	0.00115	0.003185
ADHFE1	2.595477534	8.00E-05	0.008429
AFG3L1	3.328794939	0.00016	0.022576
AGAP6	3.12314597	0.00237	0.048077
AGAP8	2.653690281	0.00274	0.005739
AGER	3.398739997	3.00E-05	0.028163
AHR	3.321880096	0.00011	9.60E-05
AHSA2	2.599078125	0.00024	0.049241
AIRE	2.298989696	0.00264	0.037791
AK1	3.149231906	2.00E-04	0.00014
AKIRIN1	3.607501514	0.00687	0.001229
AKR1D1	2.115501927	0	0.000362
AKTIP	2.762548896	0.00089	0.006322
ALKBH6	3.580100284	0.00132	0.004309
ALPP	2.760634707	0	0.049347
AMT	3.249009585	0.00087	0.003705
AMY2A	3.090842199	0.00125	0.027947
AMY2B	2.737767626	5.00E-05	0.004284
ANAPC1	2.339175328	0.00186	0.034204
ANAPC4	2.370185542	0.00344	0.014887
ANKDD1A	2.167451934	0.00489	0.014876
ANKLE2	2.340797283	2.00E-05	0.003494

ANKMY1	2.381713699	1.00E-05	0.02227
ANKRA2	2.793357065	1.00E-05	0.003021
ANKRD10	2.355445579	0.00057	0.005304
ANKRD11	2.45206972	6.00E-05	7.90E-05
ANKRD12	3.446184639	0.00059	0.017133
ANKRD13C	2.164449289	0.00016	0.002499
ANKRD13D	2.015307521	0.00116	0.005069
ANKRD30B	2.250116969	8.00E-05	0.001464
ANKRD36	2.259494429	0.00025	0.015268
ANKRD36B	2.505328877	0.00206	0.01606
ANKRD49	2.303775285	0.00469	0.002249
ANKS3	2.214529169	0.00066	0.011844
ANKZF1	2.396618043	0.00456	0.00249
ANO9	2.057653416	0.00578	0.011102
AP4B1	3.301221634	0.00029	0.027695
APBB3	2.425025638	0.0019	0.00817
ARGLU1	3.470154749	3.00E-05	0.018589
ARHGAP30	2.745368863	0.00152	0.003533
ARHGAP4	2.828427125	0.00481	0.029913
ARID4B	2.901904416	0.00071	0.003211
ARIH2	2.538541772	0.00273	0.001886
ARL16	2.72829567	0.00038	0.011698
ARL4A	2.489748471	0.00532	0.047813
ARL4C	3.267075964	0	0.004034
ARMCX4	2.494931144	0.00029	0.043354
ARRDC3	2.651851521	8.00E-05	0.000347
ARRDC5	2.724516069	0.00269	3.70E-05
ASB1	2.248557848	0.00136	0.01922
ASNS	3.002158195	0.00155	0.035225
ASPSCR1	2.411615655	0.00251	0.033482
ATF3	3.099423724	0.00525	0.012173
ATF4	3.528365461	0.00269	0.039631
ATG12	2.170458744	4.00E-04	0.013407
ATG16L2	3.462946262	0	0.029221
ATG4B	2.057653416	0.00198	0.022296
ATHL1	3.338037125	1.00E-05	0.010293
ATM	2.300583787	0.00076	0.012941
ATP6V0E2	2.806943452	0.00084	0.045094
ATP8B2	2.448672785	0.00202	0.035717
ATPBD1B	2.388326374	0.00472	0.013649
AXIN2	2.484576564	8.00E-05	0.001266

AXUD1	3.048289661	0.00158	0.000435
BANP	2.066228775	0.00294	0.001457
BBS2	2.353813474	4.00E-05	0.0108
BCKDHB	2.730187436	0	0.003053
BCL11A	2.781763943	0.00075	0.010629
BCL11B	2.093620564	0.0043	0.001991
BCL2	3.439025945	0.00111	0.023439
BCLAF1	2.344044567	0.00169	0.026603
BCYRN1	3.097276111	0.00453	0.018637
BEX2	3.58258268	0.00354	0.018637
BHLHB2	2.391639594	1.00E-05	0.004243
BIRC2	3.43664302	4.00E-05	0.013093
BIRC3	2.535025044	0.00474	0.024932
BLZF1	2.579336501	0	0.033033
BMS1P5	2.820595921	0.00136	0.017019
BRUNOL6	2.568631618	0.00085	0.033441
BTAF1	2.15995312	3.00E-05	0.000519
BTN2A1	2.826467288	9.00E-05	0.00317
BUB3	2.217601287	9.00E-05	0.030894
CA5B	2.421666168	0.00295	7.00E-06
CACNA1I	2.125791349	7.00E-05	0.005648
CAMK2N1	2.909961367	4.00E-05	0.043218
CAMK4	3.285242803	0.00458	0.010662
CAPN12	2.522754818	0.0024	0.025402
CAPN7	2.486299338	2.00E-05	0.005592
CAPRIN2	2.498392251	0.00278	0.010571
CAPS	2.421666168	0.00361	0.006834
CARD11	2.143546925	8.00E-05	0.007588
CARD8	2.368543224	1.00E-05	0.024983
CASC4	2.895876345	0.00057	0.042081
CATSPER2	2.946495372	0.00563	0.024065
CBLL1	2.316585612	0.00141	0.009533
CCBE1	2.119905567	5.00E-05	0.006168
CCDC104	2.228387302	0.00173	0.017975
CCDC125	2.348923942	6.00E-05	0.013785
CCDC130	2.276788058	0.00244	0.034656
CCDC14	3.396384986	0.00086	0.002401
CCDC45	2.100889088	0.00146	0.001203
CCDC58	2.164449289	2.00E-05	0.000978
CCDC65	2.300583787	6.00E-04	0.028931
CCDC66	2.226843236	0.00106	0.001183

CCDC76	2.109644634	0.00059	0.040925
CCDC84	2.679567205	0.00116	0.012941
CCDC93	2.950582914	0.00511	0.037182
CCL3	2.240778428	0.00026	0.040187
CCL3L1	3.016760153	0.00284	0.023855
CCL3L3	2.486299338	0	0.028931
CCM2	2.799171731	0.00041	0.034624
CCNL1	2.365262	0.00032	0.049764
CCNT2	2.399942765	0.00092	0.014135
CCR6	3.489450823	0.00748	0.006387
CCR7	2.30697121	1.00E-05	0.046319
CCT6A	3.08656035	0.00193	0.015533
CD1C	2.140577397	0.00013	0.046337
CD3G	2.507066041	0.00536	0.041702
CD6	3.21986455	0.003	0.03587
CD69	3.190980959	0.00225	0.005574
CD83	2.156960863	0	0.011196
CD96	2.889860796	0.00706	0.004095
CDAN1	2.294214048	6.00E-05	0.004625
CDC14A	2.063366359	0.00277	0.037678
CDC16	2.559744828	0.00031	0.007568
CDC2L2	3.269341314	0.00285	0.001313
CDH23	3.630076621	0.00126	0.024768
CDK10	2.566851795	0.00111	0.009324
CDK5R1	2.609909895	0.00151	0.046938
CDK5RAP3	3.273876726	2.00E-04	0.001824
CDKN1B	2.179504224	0.00094	0.024627
CDKN2AIP	3.197623321	0.0018	0.019977
CDKN2AIPNL	2.360348687	0.00497	0.001207
CDR2	2.130216407	0.00112	0.00426
CENPJ	3.184352395	0	0.027314
CENPK	2.316585612	0.00025	0.011965
CEP110	2.032140286	0	0.048429
CEP135	2.254800824	0.0019	0.000901
CEP170	2.8108374	2.00E-05	0.025978
CEP192	2.642676811	0.00098	0.034775
CHCHD7	2.64634288	0.00083	0.012961
CHKB	3.308093474	8.00E-05	0.028814
CHRNA5	2.388326374	0.00669	0.015344
CIRBP	2.918040688	0.00274	0.024474
CLDN15	2.286276671	0.00776	0.019022

CLDND2	2.545589871	0.00062	0.029408
CLEC7A	2.228387302	4.00E-04	0.002427
CLK1	2.208397694	0.00042	0.019791
CLK2	2.846126922	7.00E-04	0.027921
CLK3	3.662934746	0.00435	0.019313
CNPY4	2.726405215	0.00041	0.005689
CNTNAP1	2.278366754	9.00E-04	0.031003
COCH	3.050403307	0.00166	0.028902
COG3	2.173469725	3.00E-04	0.039075
COLQ	2.954676127	1.00E-05	0.037237
COX19	3.40817638	8.00E-05	0.044573
CPEB2	2.043440165	0.00399	0.032529
CPT1B	2.430073584	0.00126	0.007046
CRCP	3.424753138	0	0.019582
CREB1	2.177994031	0.00114	0.000953
CREBZF	2.624422509	0.00223	0.033686
CRLF3	2.768299432	0.00094	0.034494
CROP	2.732080514	6.00E-05	0.009193
CRY1	2.414961183	0.00129	0.018329
CRYGS	2.418311352	0.00409	0.015558
CRYZL1	2.100889088	0.00202	0.01242
CSAD	2.911979098	0.00013	0.017747
CSDE1	3.160165247	0.00013	0.040201
CSE1L	3.34962595	2.00E-05	0.014968
CSGALNACT2	3.071620539	0.00136	0.046532
CSNK1E	2.194663875	0.00268	0.018415
CSPP1	2.233025924	0.00054	0.001651
CSTF3	3.073750363	0.00432	0.035277
CTGLF3	2.251677172	0.00157	0.047586
CTLA4	3.30351066	0.00155	0.020036
CTNNB1	2.891864589	0.00086	0.043557
CTRL	2.500124605	0.00166	0.028291
CTSK	2.952628811	0.00022	0.037772
CUL4A	2.083486858	0.00481	0.0034
CXCL2	2.231478645	0.00597	0.002453
CXCR4	2.670296607	9.00E-05	0.038256
CXorf40A	2.770218936	0.00613	0.013626
CXorf40B	2.991771517	0.00132	0.001033
CXorf45	2.300583787	0.00645	0.029696
CXorf65	2.070529848	0.00573	0.0061
CYLD	2.303775285	6.00E-04	0.016489

CYP2R1	3.3449856	0.00158	0.000383
CYP4B1	2.326240083	3.00E-05	0.035724
CYTH2	2.508804409	6.00E-05	0.023347
D2HGDH	3.276146791	0.00087	0.019022
DACT1	2.07915887	0.00235	0.039427
DDB1	2.225300241	0.00711	0.034663
DDIT3	2.918040688	2.00E-05	0.024143
DDIT4	2.042024251	0.00061	0.007227
DDX17	2.348923942	2.00E-05	0.040397
DDX27	2.29739671	2.00E-04	0.037815
DDX39	2.852051435	0.00118	0.039631
DDX5	2.475980582	0.00718	0.000898
DDX51	2.061936638	0	0.011534
DDX55	2.450370664	0.00012	0.034697
DEM1	2.681425183	1.00E-05	0.004426
DGKQ	3.090842199	9.00E-05	0.015574
DIDO1	2.131693472	0.00072	0.043076
DIP2A	2.114036081	0.0019	0.019775
DIS3L	3.543070076	0.00134	0.022359
DMC1	2.20686748	1.00E-05	0.005571
DMTF1	2.394957409	0	0.044821
DNAH1	2.019502595	0.00025	0.01478
DNAJB9	2.0265138	0.00015	0.02606
DPP4	2.071965527	0.00049	0.00317
DPP7	3.620025852	0.00064	0.012311
DUSP1	2.633533844	0.00198	0.027916
DUSP19	2.413287839	0.00291	0.024287
DUSP2	2.887858391	0.00083	0.018173
DUT	2.679567205	3.00E-04	0.000405
DUXAP3	3.002158195	0.00356	0.015939
DYNLL2	2.846126922	2.00E-05	0.034599
DYRK1A	2.130216407	0.00051	4.00E-06
DYRK2	3.386981249	0.00074	0.015574
E4F1	2.127265346	0.00102	0.028764
EBI2	3.494291584	0.00046	0.01094
ECHDC2	3.127478573	0	0.001132
EDAR	2.108182847	0.00213	0.035456
EDG4	2.507066041	0.00015	0.026879
EGR1	2.355445579	0.00029	0.006889
EGR2	2.324628215	1.00E-04	0.001917
EID2B	2.106722072	0.00252	0.012171

EIF1	2.575763259	2.00E-05	0.004959
EIF3CL	2.445280555	0.00485	0.00942
EIF4A1	2.863937482	0.00026	0.010184
EIF4A2	2.146520573	4.00E-05	0.015517
EIF5	2.416635687	0.00164	0.019479
ELF2	2.344044567	0.00457	0.032248
ENO3	2.185555478	0.00032	0.00646
ENOSF1	2.262628926	0.00175	0.002879
ENSA	2.15248025	6.00E-05	0.003592
EPC1	2.474264957	7.00E-05	0.029538
EPHA4	3.670559529	0.00092	0.00942
EPHX2	3.07801444	0.00086	0.000349
ERN1	2.370185542	9.00E-05	0.029453
ERP27	2.283109414	0.00457	0.013678
ETS1	2.791421528	0	0.001362
ETV3	2.261061134	0	0.015823
EVL	2.611719574	0.00109	0.011046
EXOSC8	3.149231906	0.00402	0.01914
EXOSC9	2.295804828	0.00456	0.015574
EYA3	2.572194967	0.0068	0.017747
FAM102A	2.543826013	7.00E-05	0.039819
FAM10A4	2.331082396	0.00046	0.02635
FAM111A	2.073402202	0.00201	0.002865
FAM113A	2.220677667	1.00E-05	0.006584
FAM115A	2.127265346	6.00E-05	0.001753
FAM116A	2.15248025	0.00045	0.041329
FAM119A	2.441893025	0.00011	0.002743
FAM134B	2.633533844	0.00033	0.04788
FAM13A	2.521006783	0	0.001012
FAM13AOS	2.674000991	3.00E-05	0.000874
FAM153B	2.292624371	2.00E-05	5.50E-05
FAM156A	3.164549205	0.00359	0.028658
FAM156B	2.253238457	0.005	0.017216
FAM175A	3.267075964	0.00188	0.038658
FAM190B	3.58258268	0.00311	0.006373
FAM24B	2.848100391	0.00036	0.021407
FAM39DP	2.450370664	5.00E-05	0.001591
FAM39E	2.859969973	0.0015	0.00098
FAM73A	2.335934789	3.00E-05	0.049344
FAM76B	2.197708435	0.00776	0.001803
FAM84B	2.609909895	0.00485	0.008102

FARSLB	2.173469725	0.00063	0.000763
FASTK	2.179504224	0.00012	0.015147
FBLN5	2.298989696	2.00E-05	0.005816
FBXO11	3.246758324	0.00326	0.028931
FBXO33	2.345669898	0.0018	0.009927
FBXW4	2.199232299	0.00787	0.020806
FCAR	3.24226048	0.00656	0.011969
FCRL2	3.23104311	0.00025	0.002401
FCRL3	2.00416321	8.00E-05	0.002844
FKBP14	2.291035796	0.00031	0.019824
FLJ10213	2.488023307	0.00262	0.044019
FLJ21865	2.111107435	0.00296	0.000975
FLJ25006	2.406606052	0.00555	0.001066
FLJ31306	2.803054898	0.00022	0.000954
FLJ32255	2.345669898	0.00109	9.00E-05
FLJ35785	2.019502595	0	0.034009
FLJ43663	3.157975547	9.00E-04	8.00E-06
FLJ44342	2.253238457	2.00E-04	0.002321
FN3KRP	3.095129987	0.00079	0.008843
FNDC3A	2.380063393	0.00719	0.019474
FOS	2.724516069	0	0.04266
FOSB	2.071965527	0.0022	4.80E-05
FOXP1	2.125791349	0.00572	0.004929
FRAG1	2.524504064	3.00E-05	0.003667
FVT1	2.543826013	0.00024	0.049768
FYN	2.521006783	0.00029	0.032014
GABBR1	2.613530508	0.00016	0.01979
GAL3ST4	2.020902893	1.00E-05	0.022224
GALIG	2.345669898	1.00E-04	0.019301
GDPD3	2.30697121	0.00443	2.20E-05
GFM2	2.498392251	0.00016	0.026943
GGA1	3.429504147	8.00E-05	0.042195
GGTL3	2.261061134	6.00E-05	0.037868
GIT2	2.747272467	1.00E-05	0.036698
GLMN	3.149231906	0.00161	0.000533
GOLGA8A	2.989698497	0.0035	0.02341
GOLGA8B	2.074839873	0.00293	0.027432
GPBP1	2.326240083	0.00253	0.011557
GPR89B	2.547354951	0.00728	4.40E-05
GRAP	2.294214048	0.00635	0.010325
GRIPAP1	2.581124981	0.00179	0.000997

GSDMB	2.217601287	0.00155	0.011234
GTF2H3	2.001386775	9.00E-05	0.006945
GTF2IRD2P	2.597277205	1.00E-05	0.000123
GTPBP3	3.014669819	0.00259	0.01976
GUSBL1	3.199840513	2.00E-05	0.002879
HBEGF	2.184041091	0.00108	0.000175
HEATR5B	3.25577274	0.00064	0.011158
HECA	3.058872556	0.00011	1.00E-06
HERC4	2.46741434	0.00127	0.019932
HEXDC	2.526254524	0.00018	0.023408
HIATL1	2.926142441	0.00034	0.006399
HIATL2	2.071965527	0.00035	0.032021
HIF3A	2.435132037	0.00296	0.002348
HIP1R	2.590085998	2.00E-05	0.005763
HMGB1L1	2.70007597	0.00024	0.01673
HMGNI	2.828427125	0.00437	0.035904
HMGNI2	2.72829567	0.00674	0.029566
HNRNPA2B1	3.149231906	0.00597	0.00922
HNRNPH1	2.064797071	0.00076	0.033592
HNRNPU	2.751083636	0.00431	0.005629
HNRPA1L-2	2.536782799	0.00143	0.034466
HNRPA1P4	2.253238457	9.00E-05	0.035801
HNRPDL	2.187070915	1.00E-05	0.001977
HSD17B11	3.370587318	0.00548	0.029019
HSD17B7P2	2.493202389	0.00011	0.001057
ID1	3.403454918	0.00278	0.002032
IER2	2.383365149	0.00263	0.002231
IER3IP1	3.041957506	2.00E-05	0.008524
IL11RA	3.195407666	0.00344	0.002221
IL18R1	3.097276111	0.00016	0.046262
IL7R	2.086377187	0.00513	0.004583
IL8	2.758721844	0.002	0.031808
IMPA1	2.176484883	0.00071	0.021293
INTS1	2.600880293	0.00324	0.002111
INTS4	2.222217457	1.00E-05	0.001077
INTS6	2.196185628	0.00011	0.03587
INTS8	2.363623094	4.00E-04	0.00122
ISY1	2.112571251	0.00219	0.034054
ITGAE	3.595020506	0	0.002311
ITPR3	2.344044567	0.00253	0.041275
JUN	3.494291584	0.00107	0.015156

KAT2A	2.453769955	0.00524	0.014981
KCTD5	2.124318373	0.00158	0.02611
KIAA0146	2.225300241	0	0.009119
KIAA0495	2.536782799	0.00447	0.016683
KIAA0748	2.408274762	0.00064	0.005899
KIAA1109	2.348923942	0.00444	0.021569
KIAA1147	2.137611982	1.00E-04	0.046835
KIAA1370	2.804998501	3.00E-05	0.001548
KIAA1468	2.162949527	0.00122	0.002287
KIAA1641	2.153972752	0.00073	0.002011
KIAA1731	3.375263185	0.00011	0.002197
KIAA1875	2.72829567	0.00408	0.014705
KIAA2010	2.633533844	0.00019	0.005169
KIF27	2.310171569	0.00043	0.036116
KIFC2	2.793357065	0.00034	0.018637
KLF4	3.138336392	0	0.000742
KLF6	2.897884309	0.00072	0.04541
KLHDC2	2.044857061	0.00101	0.026943
KLHL28	3.246758324	3.00E-04	0.028902
KLHL29	2.134650676	1.00E-05	0.002504
KLRF1	2.034959384	9.00E-04	0.003494
KPNA5	2.33269874	1.00E-05	0.002612
KRT72	2.431758566	0.00178	0.023421
KTELC1	2.111107435	0.00452	0.024511
LARP7	2.557971163	9.00E-05	0.005648
LAT1-3TM	2.542063379	0.00363	0.008297
LBR	2.448672785	0	0.037194
LCK	2.795293944	0.00681	0.004469
LCOR	2.543826013	0.00638	0.022844
LEMD2	3.550445349	0.00105	0.037267
LETMD1	2.140577397	0.00198	0.031331
LIAS	2.538541772	0.0047	0.034505
LINS1	2.130216407	0	0.045127
LPIN1	2.435132037	0.00145	0.004941
LRCH3	2.66474965	0.00027	0.022473
LRCH4	2.591881931	1.00E-04	0.006861
LRP5L	2.496661098	0.00026	0.024163
LUC7L	2.366902044	0.00341	0.008814
LYSMD4	2.808889751	0.00036	0.000861
MAFF	2.958775018	1.00E-05	0.047586
MAP3K7IP3	2.034959384	0.00033	0.021499

MAP4K5	2.047693801	0.0018	0.005752
MAPK8IP3	2.046274939	0.00739	0.007167
MAPKAPK5	2.760634707	5.00E-05	0.005947
MATR3	2.830388321	0.00069	0.019707
MBNL1	2.283109414	5.00E-05	0.009104
MBTD1	2.185555478	0	0.001216
MCF2L2	2.29739671	0	0.00293
MCHR2	3.642679334	0.00737	2.00E-06
MDN1	2.049113646	0.00113	0.040412
MED27	2.458877735	0.00193	0.021189
MEGF6	2.321407829	0	0.000681
METT11D1	2.64450921	5.00E-05	0.001944
MGC16384	2.446976082	0.00064	0.002036
MGC5457	2.488023307	0.0018	0.031144
MIAT	2.66474965	0.0013	0.037897
MID2	2.958775018	0.00356	0.033627
MLKL	3.157975547	0.00021	0.036544
MLL5	2.887858391	0.00323	2.70E-05
MLLT10	2.600880293	0.00526	0.003546
MMS19	2.168954818	3.00E-05	0.005074
MORF4L1	2.591881931	1.00E-04	0.014585
MPHOSPH8	2.273633946	1.00E-05	0.020816
MRI1	2.170458744	0.00306	0.004569
MRPL21	2.46058269	8.00E-04	0.003599
MRPL43	3.144869169	0	0.018637
MRPS21	2.352182501	0.00626	0.019283
MRPS25	3.415270858	3.00E-04	0.020311
MRRF	2.345669898	0.00342	0.020766
MS4A1	2.063366359	1.00E-05	0.025446
MST1	2.057653416	0	0.001557
MTMR1	2.692600139	0.00015	0.014828
MTRF1	2.164449289	0.00082	0.035151
MYO3B	2.105262309	0.00227	0.00264
N4BP2	3.031433133	0.00059	7.20E-05
N4BP2L2	2.907945035	0.00521	0.040314
NAPIL3	2.455471368	0.00103	0.004237
NARG1L	2.791421528	0.00576	0.010975
NBPF14	2.572194967	0.0014	0.009094
NBPF8	3.069492192	0.0031	0.004184
NCRNA00219	3.273876726	0.0018	0.012529
NDRG2	2.139094176	0.00319	0.043731

NELL2	3.361255009	1.00E-05	0.012276
NFATC2IP	3.208724665	7.00E-05	0.011927
NFKBIZ	2.840214717	0.00041	0.002453
NFX1	2.199232299	0.00252	0.005522
NGDN	3.1777376	0.00453	0.034628
NGLY1	2.493202389	0	0.013822
NKTR	2.292624371	0.00012	0.005105
NLRC3	2.061936638	0.00107	0.001748
NLRP2	2.099433367	0.00073	0.003567
NMT2	2.295804828	2.00E-04	0.00098
NOP14	2.775985438	0.00703	0.000699
NOP56	2.291035796	0.00436	0.029696
NOXA1	2.118436669	0.00116	0.007526
NPEPL1	2.674000991	1.00E-05	0.042314
NPHP3	2.905930099	0.00035	0.000874
NPIP	3.116658319	5.00E-05	0.000383
NR1D2	2.899893666	0.00046	0.000809
NR2C1	2.613530508	0.00354	0.000834
NR4A2	2.428389769	2.00E-05	0.010377
NR4A3	2.284692494	0.00024	0.026041
NRBP2	2.403272099	0.00015	0.006228
NSL1	2.465704651	0.00236	0.049764
NSMCE4A	2.112571251	0.00019	0.010067
NSUN5B	2.475980582	0.00413	0.011254
NSUN5C	3.173335373	0.00114	0.004771
NUBPL	2.51925996	0.00037	0.011608
NUCKS1	2.279946545	0.00124	0.000664
NUDT13	2.932233514	8.00E-05	0.005902
NUDT21	2.300583787	0.00015	0.007103
NUFIP2	2.720741705	2.00E-05	0.025093
NUP35	2.145033234	9.00E-04	0.033386
OCIAD1	3.202059243	0.00578	0.000663
OCIAD2	3.1777376	0.00757	0.032093
OFD1	2.099433367	2.00E-05	0.000284
OGT	2.770218936	0.00178	0.000403
ORAOV1	2.985556767	0.00229	0.014006
OTUD1	2.355445579	0.00072	0.043554
OVGP1	2.318191904	0.00013	0.025824
OXNAD1	2.62988552	0.00011	0.010245
P2RY10	2.881859498	0.00126	0.047636
P4HTM	2.278366754	0.00035	0.004138

PABPC1	3.590040203	6.00E-04	0.01187
PABPC1L	2.522754818	0.00199	0.017236
PAK2	2.624422509	0	0.026613
PAN2	3.680750602	6.00E-05	0.002073
PARP15	2.70007597	0.00388	0.000968
PBX4	3.535710124	0	0.002242
PCBD2	2.581124981	0.00011	0.014864
PCNT	2.294214048	0.00333	0.00321
PDE3B	2.347296357	8.00E-05	0.012604
PDE4B	2.659214216	1.00E-05	0.005597
PDE7A	2.15248025	2.00E-05	0.00759
PFAAP5	2.174976782	0.00598	0.003339
PHACTR3	2.942413492	0.00341	0.024491
PHAX	2.286276671	0.00192	0.022844
PHC3	3.244508622	0.00721	0.007027
PHF14	2.073402202	0.00094	0.011959
PHF2	3.20427951	0.0038	0.000382
PHF5A	2.143546925	2.00E-05	0.035339
PIK3CA	2.194663875	0.0056	0.014179
PIK3IP1	2.046274939	0.00102	0.007
PILRB	2.084931522	0.00213	0.010291
PION	2.602683711	0.00314	0.000249
PIP3-E	2.193143177	1.00E-05	0.047706
PLA2G4B	2.261061134	0.00263	0.024742
PLCG1	2.256364275	0.00159	0.017143
PLCH2	2.515769944	0.00036	0.002348
PLEKHA1	2.070529848	5.00E-05	1.50E-05
PLEKHG4	2.237674202	0.00135	0.000172
PLXDC1	2.381713699	1.00E-05	0.000528
PMAIP1	2.45206972	0.00076	0.005816
PMS2L3	2.90391656	6.00E-05	0.03225
PMS2L5	2.398279828	0	0.004423
PNMA3	2.348923942	9.00E-05	0.044464
PNN	2.200757219	8.00E-05	0.006204
PNPT1	2.005552872	4.00E-05	0.0415
POFUT2	2.083486858	0.00051	0.032798
POLR2J2	2.411615655	0.00107	0.000856
PPIG	2.019502595	3.00E-05	0.01066
PPM1K	3.494291584	0.00195	0.001557
PPOX	3.668016173	0.00036	0.019428
PPP1R2P9	2.080600533	0	0.010585

PPP1R3E	3.160165247	0	0.016255
PPP2CB	2.67585511	0.00518	0.016325
PPP3CC	2.097978655	0.00089	0.004831
PPTC7	2.50185816	0	0.049313
PRKRA	2.134650676	0	1.50E-05
PRKRIP1	3.175535724	0.00054	0.002453
PRMT10	2.993845974	0.00486	8.10E-05
PRMT2	2.909961367	0.00054	0.035821
PRO0628	2.42670712	0	0.031689
PRPF3	2.077718207	0.00735	0.00614
PRPF4B	3.494291584	3.00E-04	0.03137
PRPH2	3.650261954	0.00041	0.020055
PSEN1	3.340351678	1.00E-05	0.001761
PSMA1	3.312682645	0.00523	0.001664
PSMA7	3.319578342	5.00E-05	0.006286
PTAR1	2.517514347	1.00E-05	0.027139
PTBP2	2.526254524	0.00153	0.014362
PTGDR	3.06523992	0.00063	0.002621
PTGS2	2.692600139	0	9.00E-06
PTS	2.254800824	0.00327	0.004941
PVT1	3.592529492	8.00E-05	0.002242
QSOX2	2.286276671	0.00674	0.017659
RAB24	2.033549347	0	0.00249
RAB3IP	2.196185628	0.00269	0.019294
RAB40B	2.29739671	0.0051	0.000166
RABGGTB	2.261061134	0.00397	0.010293
RABL2A	2.07915887	0.00199	0.013951
RABL2B	2.893869772	0.00151	0.017019
RAD21	2.651851521	0.0056	0.00191
RALGAPA1	2.522754818	0.00239	0.014868
RASA2	2.396618043	0.00317	0.013446
RASGRP1	2.199232299	0.00203	0.018564
RASSF1	2.196185628	2.00E-04	0.013553
RASSF5	2.597277205	0.00423	0.024128
RBBP6	2.64634288	9.00E-05	0.018637
RBM12	2.403272099	0.00402	0.001434
RBM25	2.696335463	0.00224	0.003236
RBM26	2.508804409	1.00E-05	0.016977
RBM33	3.010493495	0.00649	0.000198
RBM6	2.205338326	0.00186	0.024813
RECQL	2.074839873	0.00266	0.010191

REV1	2.940374673	0.00261	0.016606
RG9MTD3	2.02791896	0.0034	0.025259
RGS1	2.067661472	0.00052	0.000329
RGS17	2.339175328	0.00013	0.001522
RN7SK	3.088700532	0.0036	0.000597
RNASEH2C	2.692600139	0	2.40E-05
RNASEN	2.114036081	0.00264	0.000423
RNF125	2.383365149	0.0054	0.000324
RNF126	3.462946262	6.00E-05	0.029453
RNF144	2.507066041	1.00E-05	0.005816
RNF144A	2.196185628	0.00191	0.006679
RNF165	2.103803558	0.00038	0.034819
RNF216	3.405814831	0.00012	0.000175
RNU11	2.932233514	0.00645	0.047312
RNU12	2.885857374	0.00225	0.001883
RNU1-3	3.331103084	0.00461	0.009651
RNU1-5	2.394957409	0.00123	0.009533
RNU1A3	3.101572825	0.00013	0.002311
RNU1F1	2.993845974	0.00526	0.019454
RNU1G2	2.406606052	0.00606	7.30E-05
RNU4-1	2.020902893	5.00E-05	0.006321
RNU4-2	3.018851937	0	0.00042
RNU4ATAC	2.303775285	0.00075	0.007555
RNU5A	2.608101471	0.00026	0.023353
RORA	2.608101471	0.00618	0.01478
RPL13	2.319799309	8.00E-04	0.012276
RPL14	2.074839873	0	0.000681
RPL37	2.040609318	6.00E-05	0.000146
RPL5	2.167451934	0.00359	0.000759
RPL7	2.830388321	0.00467	0.000471
RPPH1	2.15546629	3.00E-05	0.001293
RPS27	2.674000991	0.00013	0.038448
RPS28	2.105262309	0	0.044019
RPS6KB1	2.366902044	6.00E-04	0.021826
RRAGB	2.15248025	0.00251	0.001346
RRAS2	3.228804298	0.0046	0.011318
RTTN	2.64634288	0	0.000405
RYK	3.09298535	0.00081	0.009193
SAMD3	2.174976782	0.00038	0.014691
SBDS	2.581124981	0	0.000681
SBDSP	2.659214216	0.00023	0.014135

SCNN1D	2.934266688	0.00123	0.011698
SDHAP2	2.865923301	0	0.021652
SEC24B	2.054802879	0.00029	0.027784
SEC31B	2.039195366	0.00039	0.021069
SECISBP2	2.565073206	0.00091	0.016694
SERF1B	2.440201021	0.00345	0.0063
SF1	3.069492192	0.00735	0.001119
SFRS13A	2.165950091	3.00E-04	0.002311
SFRS14	2.01670491	4.00E-04	0.006645
SFRS16	3.501565319	7.00E-05	0.000261
SFRS17A	2.670296607	0.00019	0.009533
SFRS18	2.070529848	0	0.000369
SFRS5	3.47737824	0.00404	0.000204
SGK	2.45206972	0.00616	0.04212
SGK1	2.440201021	0.00014	0.005102
SGSM2	2.477697396	0.00774	0.044821
SH3KBP1	3.056753042	0.00065	0.018637
SH3YL1	2.143546925	4.00E-05	0.044821
SIK1	2.419988178	0.00169	0.006966
SKP1	2.167451934	0.00274	0.004138
SLC25A24	2.793357065	0.00741	0.037902
SLC25A36	2.076278541	0.00326	0.001559
SLC26A11	2.975227525	4.00E-05	0.046876
SLC29A2	2.540301965	0	0.013446
SLC2A4RG	3.513721873	2.00E-05	0.000449
SLC35A3	2.254800824	0.00589	0.004682
SLC35E1	2.72829567	0.00193	0.004012
SLC7A6	3.470154749	0.00125	0.000874
SLK	3.035638506	0.00023	5.80E-05
SLTM	3.340351678	1.00E-05	0.001559
SMA4	2.635359903	0.00346	0.003529
SNHG7	2.543826013	0.00065	0.006335
SNORA24	3.25577274	0.00101	0.024768
SNORA25	2.635359903	0.00326	0.021563
SNORA28	2.659214216	7.00E-05	0.001639
SNORA3	2.997999204	0.00614	0.000369
SNORA33	2.883857743	0.00197	0.011698
SNORA41	2.337554497	0.00035	0.001033
SNORA45	3.041957506	2.00E-04	5.80E-05
SNORA57	3.427127819	0.00217	0.000239
SNORA6	2.64634288	0.00096	4.00E-05

SNORA61	2.749177391	0.00127	0.008787
SNORA62	2.039195366	0.00386	0.002711
SNORA64	2.494931144	0.00139	0.009684
SNORA67	3.555370725	3.00E-04	0.000771
SNORA70	2.371828999	0.00011	0.02668
SNORD10	2.060507907	0.00785	0.014128
SNORD100	2.431758566	0.00282	0.000515
SNORD104	2.542063379	2.00E-05	0.024129
SNORD12C	2.019502595	0.00523	0.011376
SNORD14A	2.046274939	4.00E-05	0.013227
SNORD21	2.431758566	0	0.004469
SNORD30	2.0139111	7.00E-05	0.000322
SNORD31	2.498392251	0.00076	0.009324
SNORD32A	3.237768866	0.00053	0.003952
SNORD33	2.108182847	0.00641	0.024048
SNORD34	2.182527754	6.00E-05	0.000309
SNORD35A	3.153600696	0	0.002073
SNORD35B	2.846126922	0.00045	0.020034
SNORD36A	3.010493495	0.001	0.015748
SNORD36C	3.210949555	0	0.000239
SNORD38A	2.200757219	0.00622	0.025018
SNORD3A	3.075881663	0	0.009193
SNORD3C	2.795293944	0.00552	1.00E-06
SNORD4A	2.431758566	0.00123	0.001791
SNORD83B	3.535710124	3.00E-05	0.000269
SNORD99	2.323017464	0.00214	0.001075
SNRP70	2.705696462	7.00E-05	0.011504
SNRPA1	3.120981921	0.0011	0.027894
SNX1	3.138336392	0.00031	3.10E-05
SNX25	2.108182847	0.00311	0.028715
SNX26	2.345669898	0.00013	0.001934
SOCS2	2.662903226	0	0.001203
SON	2.674000991	0.00018	0.020119
SP110	2.245442844	3.00E-05	0.003106
SP140L	2.064797071	0.00384	0.019821
SP3	2.814736751	0.00175	0.012105
SPRY1	2.203810232	4.00E-05	0.009178
SRP54	2.659214216	0.00742	0
SRRM1L	2.948538435	0.00035	0.002154
SSR2	2.234574276	0.00786	0.031717
STAG3L1	3.298934194	0.00023	0.04704

STAG3L2	3.147049781	0.0028	0.002569
STAG3L3	2.801112642	9.00E-04	0.029785
STAT4	2.677710514	0.00271	0.019361
STAU1	2.505328877	0.00135	0.010662
STIM2	2.121375483	3.00E-05	0.001864
STK36	2.869899069	0.00062	0.007027
STX2	2.722628233	0.00082	0.008546
SUPT3H	2.158456473	0.00042	0.004095
SUV420H1	2.582914701	0.00244	5.50E-05
SVIL	2.208397694	0.00097	0.017407
SYTL2	3.417638964	7.00E-05	0.012631
TAF1C	2.549121255	0.00705	0.004232
TAF1L	2.383365149	0	0.000146
TAF9L	3.365917929	0.00657	0.01613
TAGAP	3.562771602	0.00345	0.000623
TARBP1	2.26891097	0.00021	0.033455
TARDBP	3.627561316	0.00031	0.005097
TBC1D3B	2.196185628	0.00014	0.010232
TBC1D3I	2.208397694	0.0018	0.006447
TBC1D4	2.507066041	5.00E-04	0.000986
TDRD1	2.440201021	0.00015	0.014707
TF	2.733974904	0.00773	0.01296
TGFBR2	2.205338326	5.00E-05	0.017975
THOC4	2.885857374	0	0.022158
THUMPD1	2.690734417	0.00015	0.009574
TIA1	2.995921869	2.00E-05	0.003531
TMEM137	3.273876726	0.00019	0.000647
TMEM14B	3.044066762	0.00234	0.006441
TMEM42	2.613530508	0.00079	0.000202
TMEM50B	2.267338826	4.00E-05	9.70E-05
TNFRSF25	3.398739997	0.00148	0.023565
TOP3B	3.358925972	0.00411	0.003623
TPM2	2.097978655	0	0.005042
TRA2A	2.011121161	0.0038	0.008447
TRADD	2.051956291	0	0.000318
TRIM65	2.347296357	2.00E-05	0.000112
TRMT11	2.751083636	0.00706	0.000274
TRMT2B	2.446976082	0	0.014899
TSC1	2.668446339	0.00131	0.002177
TSC22D2	3.112340706	0.00176	0.003129
TSC22D3	3.324183446	2.00E-05	0.017216

TSPAN32	3.052518418	0.00388	0.030934
TSPYL2	2.848100391	1.00E-05	0.000589
TSTD1	2.087823855	0	0.002893
TTC13	2.679567205	0.00202	0.008233
TTC14	3.314979618	0.00492	0.000305
TTC16	2.032140286	0.00126	0.001844
TTC18	2.286276671	0.00177	2.40E-05
TTC32	2.848100391	0	5.20E-05
TTLL3	2.905930099	3.00E-04	0.006009
TUBG2	3.326488393	0	0.000483
TUBGCP6	2.173469725	0.00433	0.0245
TXK	2.323017464	0.00033	0.000148
TYW3	2.150988781	0.00018	0.000157
U2AFIL2	2.50185816	2.00E-05	0.005711
UBA6	2.363623094	0.00136	0.006645
UBE1C	2.194663875	0	0.002998
UBE2A	2.869899069	0.00019	0.000565
UHRF2	2.542063379	0.00098	0.000202
UNC119	3.662934746	0.00029	0.037583
UNC84A	2.73966596	0.00717	2.00E-06
UPF2	2.73966596	1.00E-05	0.012856
UPF3A	3.116658319	0.00034	0.016346
USP1	2.057653416	3.30E-04	0.002844
USP12	2.670296607	0.00036	0.005032
USP33	2.270484204	0.00483	0.003563
USP36	3.249009585	0.00031	0.016823
USP4	2.789487333	0.00382	0.041301
USPL1	2.419988178	0.00016	0.048382
VAMP1	3.439025945	0.00019	0.001699
VAMP4	2.127265346	0.00512	0.004095
VHL	2.474264957	0.00087	0.001291
VNN3	2.540301965	0.00235	0.000284
WAC	3.278418431	0.00052	0.001676
WASH2P	2.040609318	0.00304	0.013854
WDR19	2.168954818	0.00756	0.008429
WDR74	3.099423724	0.00078	0.03244
WHAMM	3.276146791	0.00126	0.007949
WTAP	2.273633946	0.00724	0.000405
YRDC	3.622535932	0.00188	0.018339
ZAP70	2.298989696	0	5.10E-05
ZBED5	3.319578342	8.00E-05	0.0312

ZBTB25	3.073750363	1.00E-05	0.000517
ZBTB44	2.488023307	0	0.009533
ZC3H11A	2.531513188	0.00345	0.006349
ZC3H8	3.164549205	0.00417	0.001861
ZDHHC11	2.319799309	0.00483	0.008297
ZDHHC17	3.431882122	0.00455	0.002311
ZFAND2A	2.006943497	3.00E-05	0.025999
ZFC3H1	2.0907202	3.00E-05	0.013332
ZFP36L1	2.139094176	5.00E-05	0.002788
ZFP90	2.430073584	3.00E-05	0.001178
ZMIZ2	2.907945035	1.00E-05	3.40E-05
ZNF100	3.151415544	6.00E-04	0.001251
ZNF154	3.528365461	0.00305	0.014029
ZNF248	2.197708435	0	0.018589
ZNF251	2.394957409	0.00021	0.00573
ZNF264	3.075881663	0.00364	0.000239
ZNF266	2.0363704	0.00052	0.008332
ZNF276	2.848100391	0.00056	0.029761
ZNF292	2.848100391	0.00069	2.00E-05
ZNF394	2.920064021	2.00E-04	0.000255
ZNF483	2.932233514	0.00331	2.70E-05
ZNF512B	2.983488053	7.00E-05	0.047112
ZNF514	3.458148925	0	0.000204
ZNF525	3.58258268	0	0.000598
ZNF548	2.037782393	0.00071	0.004301
ZNF558	2.034959384	1.00E-04	0.001824
ZNF589	2.049113646	3.00E-05	0.000925
ZNF669	2.324628215	0.00053	0.01195
ZNF673	2.355445579	0.00674	0.015523
ZNF682	2.705696462	1.00E-05	0.002937
ZNF688	2.875873066	0.00144	0.039265
ZNF692	3.131817185	0.00022	0.000158
ZNF75A	3.226567037	0.00197	0.000269
ZNF767	3.285242803	0.00396	0.000771
ZNF786	3.292081381	0.00353	0.04634
ZNF80	3.294364069	0	0.018494
ZNF83	3.324183446	2.00E-05	0.03
ZRANB1	3.547985221	0.00036	0.010031
ZRANB2	3.557835974	0	0.000128
ZSWIM7	3.680750602	0	0.005648

Supplementary Table S3: Reorganized GO categories with genes upregulated in *P. falciparum* infection (F) as compared to *P. vivax* (V) infection

<i>P. falciparum</i> infection (F) versus <i>P. vivax</i> infection (V) [Genes upregulated]	
Groups (curated manually)	GO categories included
Immune response and inflammation	Inflammatory response Innate immune response T cell receptor signaling pathway Interferon-gamma-mediated signaling pathway TGF β receptor signaling pathway Toll-like receptor signaling pathway Immune response Cellular defense response Regulation of cytokine secretion Leukocyte migration
Protein assembly and modification	Cellular protein metabolic process Regulation of protein localization
Chromatin assembly	Nucleosome assembly Chromatin silencing
Cell signaling	Positive regulation of NF-kappaB signaling Chemokine-mediated signaling pathway Fc-epsilon receptor signaling pathway JAK-STAT cascade Neuron apoptotic process Notch signaling pathway
Cell adhesion and motility	Chemotaxis Cell-cell adhesion Movement of cell or subcellular component Cell chemotaxis Cell adhesion
Oxidative stress	Response to oxidative stress Glutathione metabolic process Oxidation-reduction process Cellular oxidant detoxification
Regulation of gene expression	Negative regulation of gene expression Negative regulation of transcription Regulation of gene expression, epigenetic
Apoptosis	Positive regulation of apoptotic process Apoptotic mitochondrial changes
Blood coagulation	Platelet activation
Miscellaneous function	Regulation of cell proliferation Regulation of mRNA stability Positive regulation of cell proliferation Positive regulation of cytosolic calcium ion

	concentration Angiogenesis involved in wound healing Microglial cell activation Negative regulation of DNA damage response Extracellular matrix organization Actin cytoskeleton organization
--	---

Supplementary Table S4: Reorganized GO categories with genes upregulated in *P. falciparum* infection (F) as compared to GSE45919 dataset (N)

<i>P. falciparum</i> infection (F) versus GSE45919 data of infection naïve US individuals (N)[Genes upregulated]	
Groups (curated manually)	GO categories included
Immune response and inflammation	Inflammatory response Innate immune response Interferon-gamma-mediated signaling Immune response T cell proliferation Adaptive immune response Regulation of INF- γ production Toll-like receptor signaling pathway Regulation of TGF β signaling pathway B cell homeostasis Regulation of NF-KB import into nucleus Regulation of inflammatory response Regulation of chemokine production Cellular response to interferon-alpha
Protein assembly and modification	Protein targeting to plasma membrane Regulation of protein stability Protein destabilization STAT protein import into nucleus
Chromatin assembly	Nucleosome assembly
Cell signaling	Signal transduction Integrin-mediated signaling pathway Receptor protein signaling pathway Regulation of MAP kinase activity Cell surface receptor signaling pathway
Cell adhesion and motility	Chemotaxis Cell adhesion Cell migration Cell motility Movement of cell
Oxidative stress	Cellular oxidant detoxification Response to hydrogen peroxide
Regulation of gene expression	Regulation of gene expression
Apoptosis	Apoptotic process
Blood coagulation	Blood coagulation Platelet aggregation
Miscellaneous function	Actin filament polymerization Cellular protein metabolic process Actin cytoskeleton organization Extracellular matrix organization

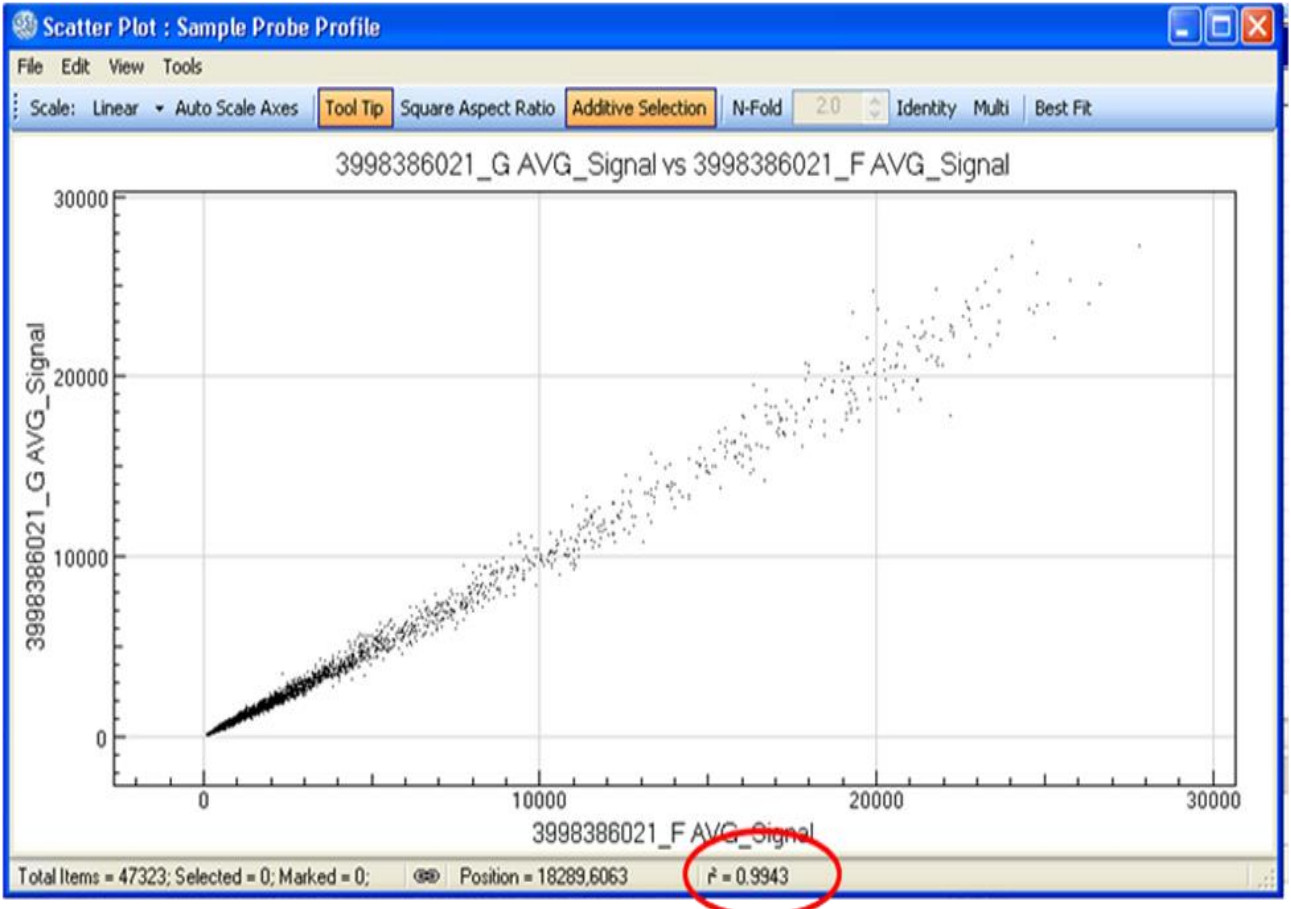
Supplementary Table S5: Genotype frequencies of CD14 promoter SNPs

SNP Type of base changes	Genotype proportion (11; 12; 22)			
	<i>P. falciparum</i> : all (n=111)	<i>P. falciparum</i> : mild (n=52)	<i>P. falciparum</i> : severe (n=59)	<i>P. vivax</i> (n=30)
rs2569190 (G>A)	0.24; 0.55; 0.21	0.29; 0.52; 0.19	0.31; 0.47; 0.22	0.24; 0.66; 0.10
rs2569191 (G>A)	0.30; 0.58; 0.12	0.41; 0.51; 0.08	0.22; 0.63; 0.15	0.27; 0.67; 0.06
rs5744454 (A>C)	0.67; 0.26; 0.07	0.81; 0.18; 0.01	0.51; 0.37; 0.12	0.66; 0.28; 0.06

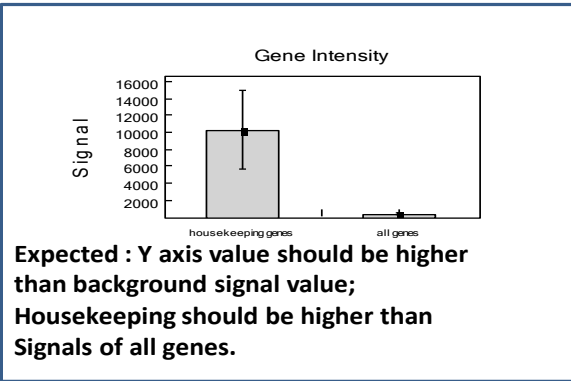
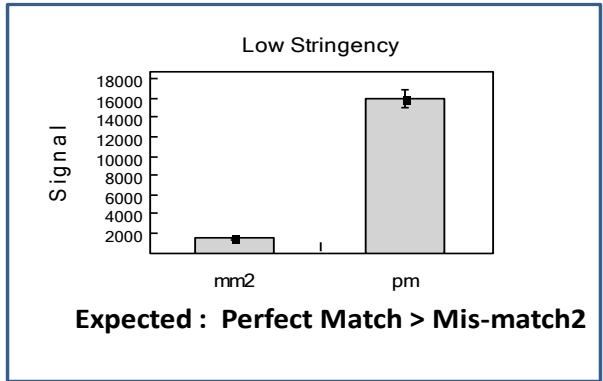
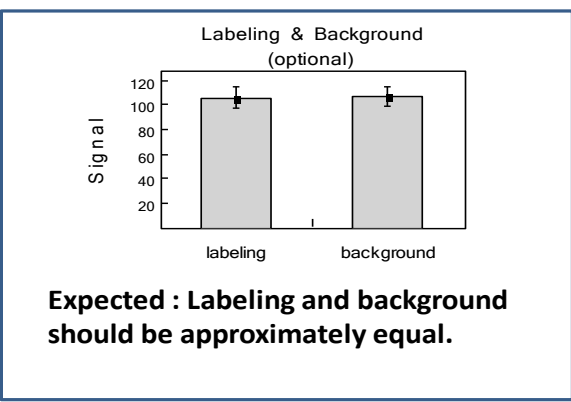
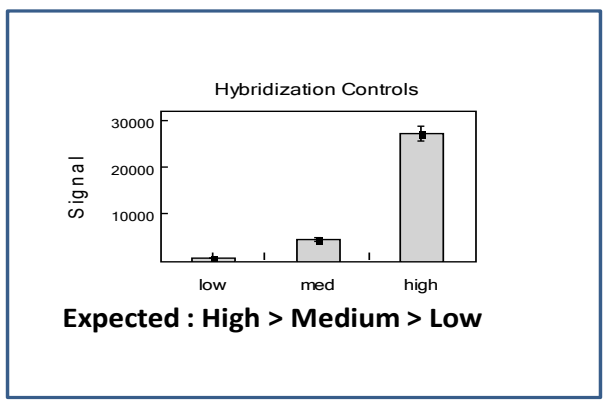
*1 and 2 denote major and minor alleles

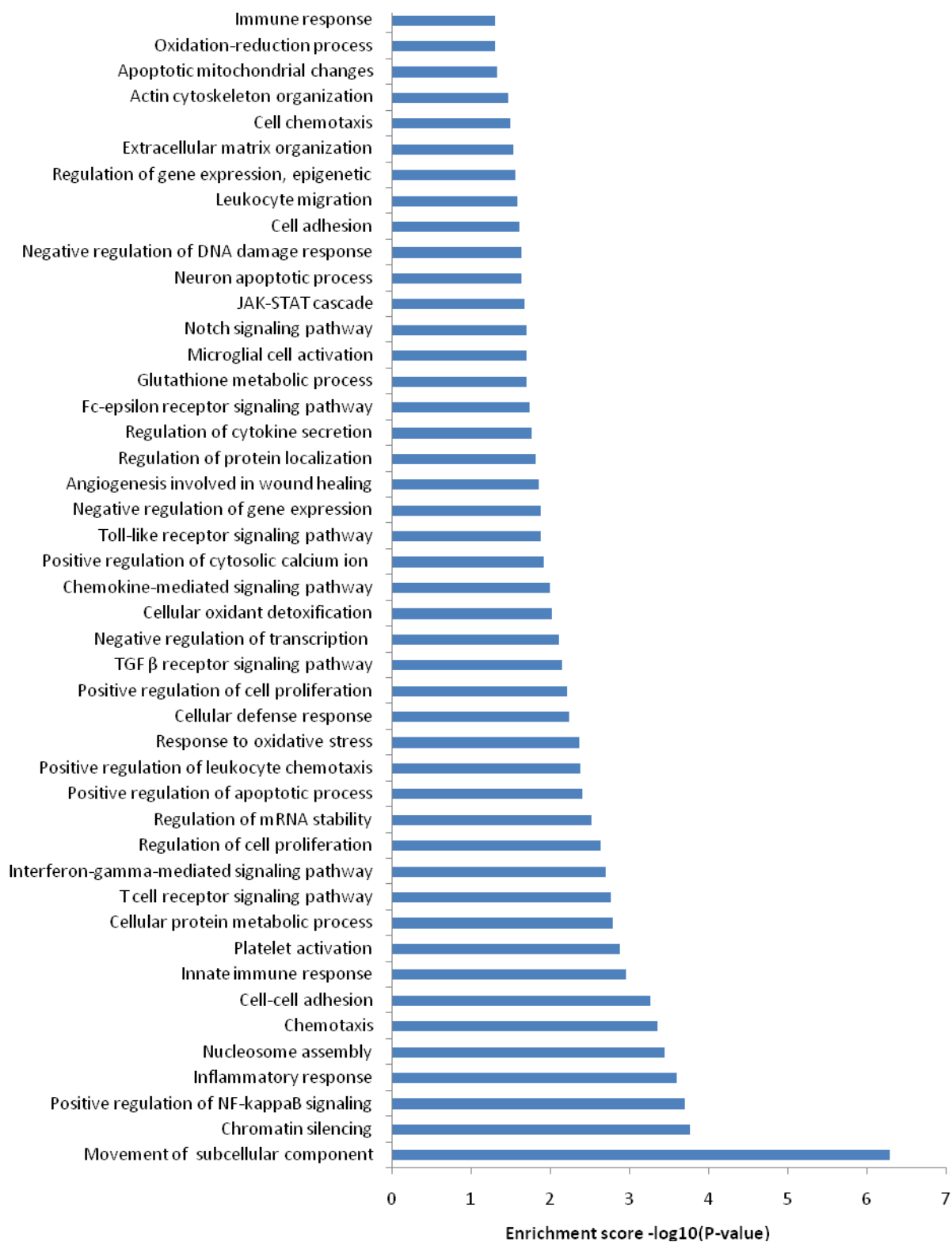
Supplementary Figure S1: a) Correlation of gene expression of technical replicates. b) Control probe expression pattern

a)

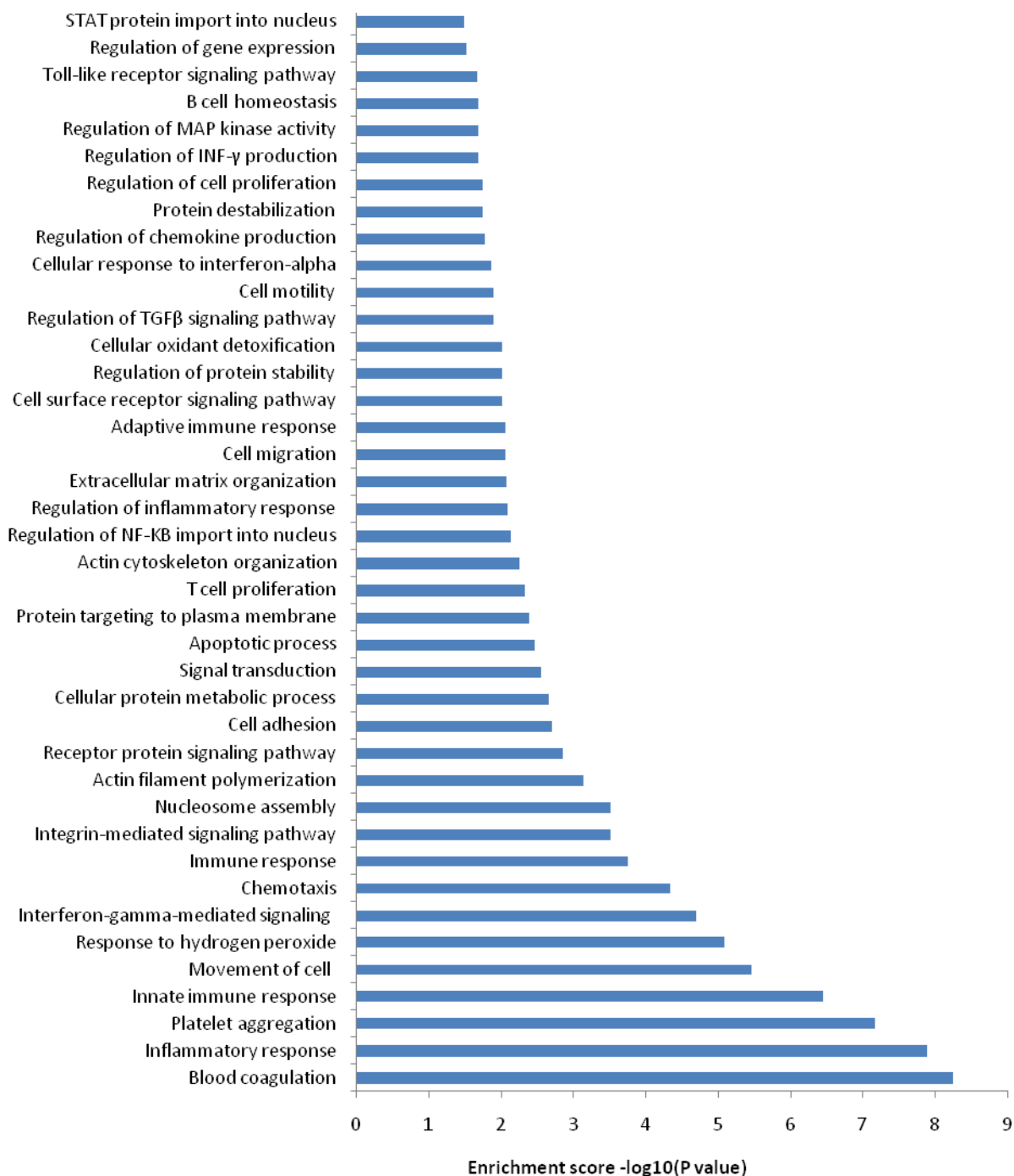


b)

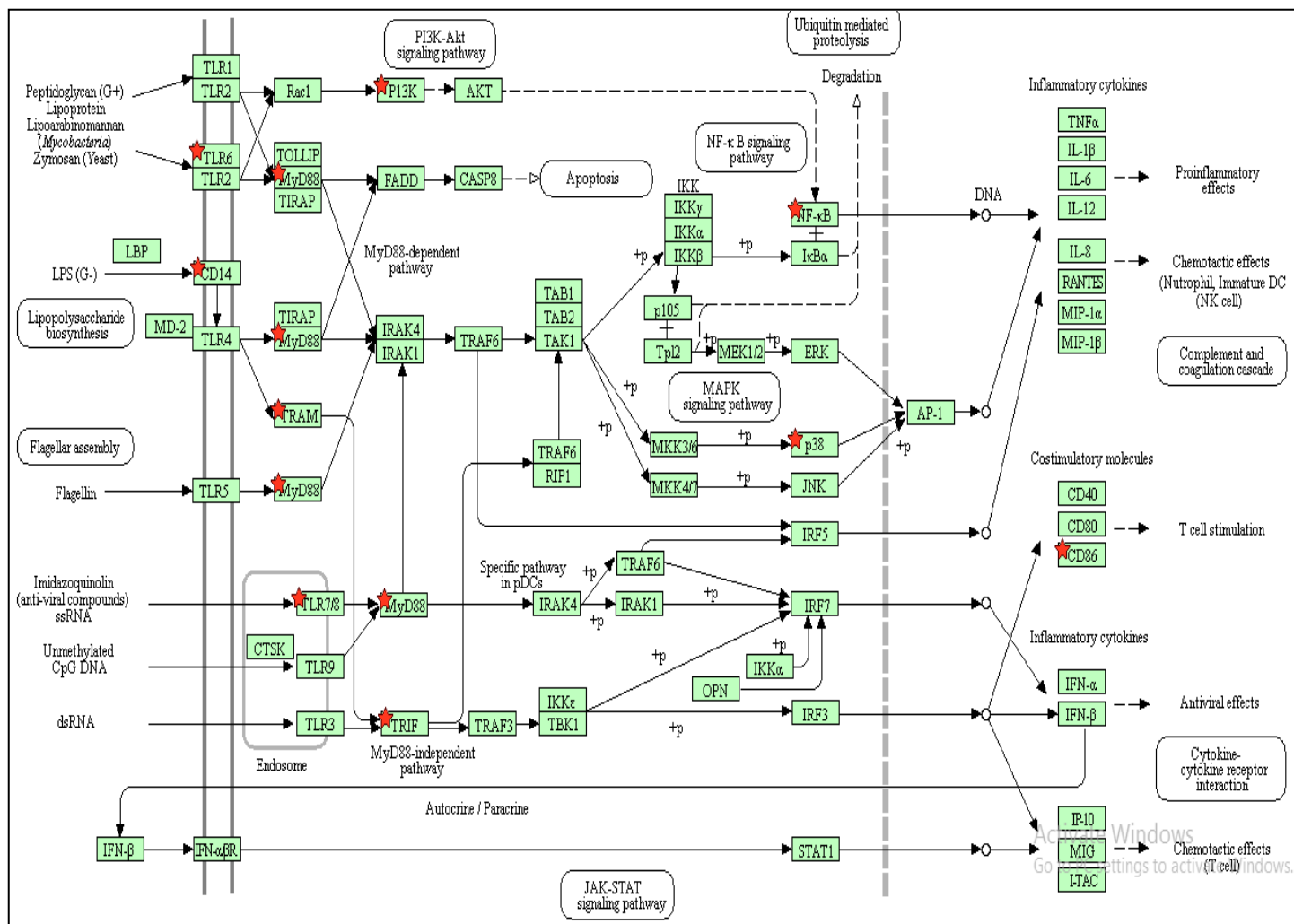




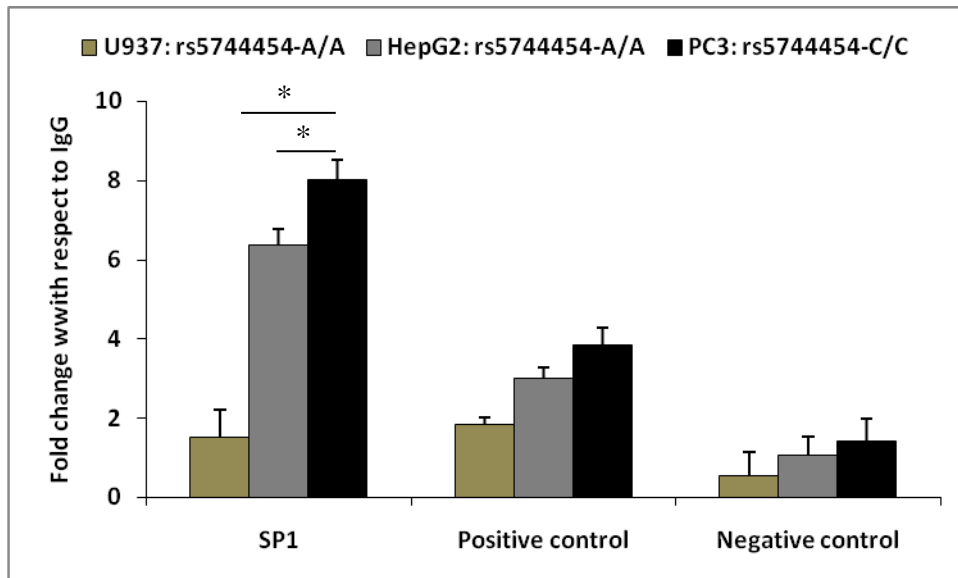
Supplementary Figure S2: GO enriched scores versus enrichment categories of genes up regulated in *P. falciparum* compared to *P. vivax* infection.



Supplementary Figure S3: GO enriched scores versus enrichment categories of genes up regulated in *P. falciparum* (F) infection compared to infection naïve US individuals (N)



Supplementary Figure S4: Toll Like Receptor (TLR) pathway enriched with genes (marked in red star) from microarray analysis.



Supplementary Figure S5: Chromatin immunoprecipitation conducted to assay the SP1 binding efficiency in CD14 promoter encompassing rs5744454 with respect to IgG as compared to a positive and a negative control primer pairs. U937 and HepG2 cell lines harboring A/A genotype show a lesser binding efficiency of SP1 than PC3 harboring C/C genotype. * denotes P value <0.05 which is considered significant.