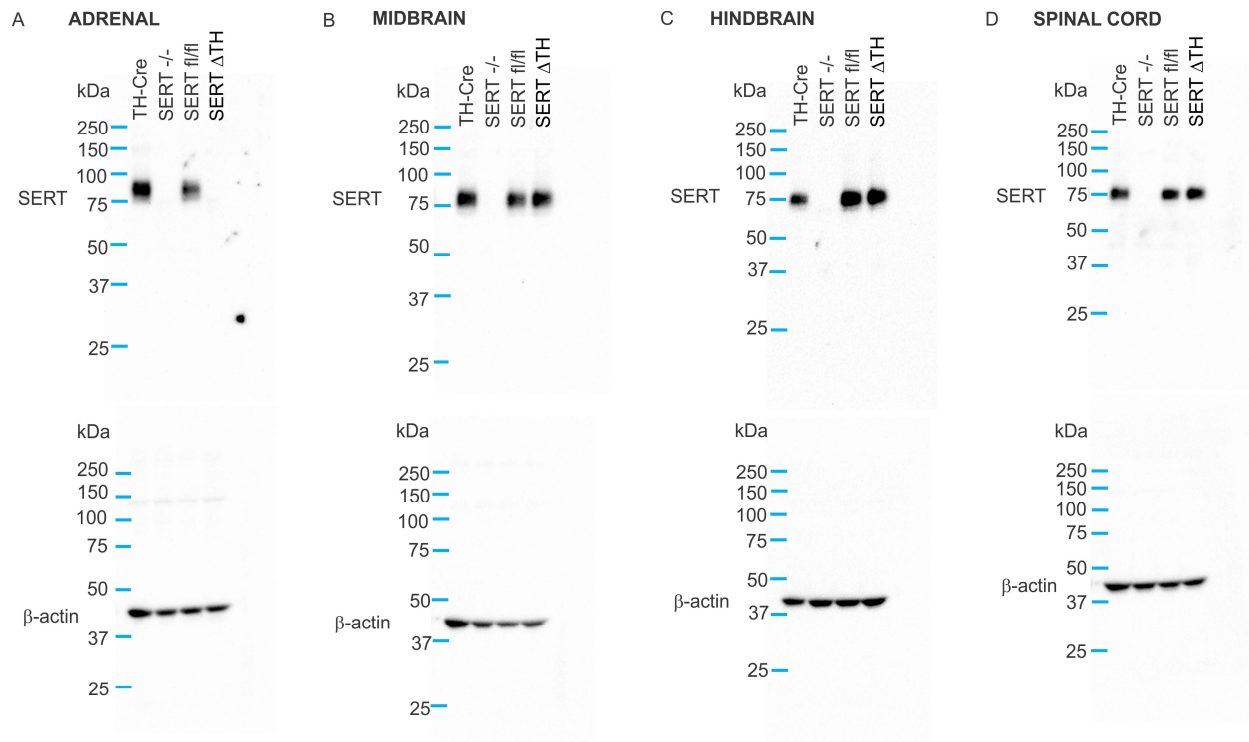


Supplementary Figure S1: SERT protein expression remained intact in the prefrontal cortex and hippocampus of SERT^{ΔTH} mice. Representative western blots of SERT and β-actin (sample loading control) protein expression in prefrontal cortex **(A)** and hippocampus **(B)** tissue samples. SERT was expressed in SERT^{ΔTH} conditional knockout samples as well as floxed (SERT^{fl/fl}) littermate controls and the Th-IRES-Cre (TH-Cre) parent line. SERT was not expressed in the SERT^{-/-} constitutive (global) SERT knockout line (negative control).



Supplementary Figure S2: Original un-cropped images of representative western blot data shown in Figure 2. Un-cropped original western blots for SERT (top panel) and β -actin (bottom panel) protein expression in **A)** adrenal gland, **B)** midbrain, **C)** hindbrain, and **D)** spinal cord tissue samples. TH-Cre is the parent Th-IRES-Cre driver line (positive control); SERT^{-/-} is the constitutive (global) SERT knockout line (negative control); SERT ^{Δ TH} and SERT^{fl/fl} are the conditional knockout and floxed control littermates respectively.