

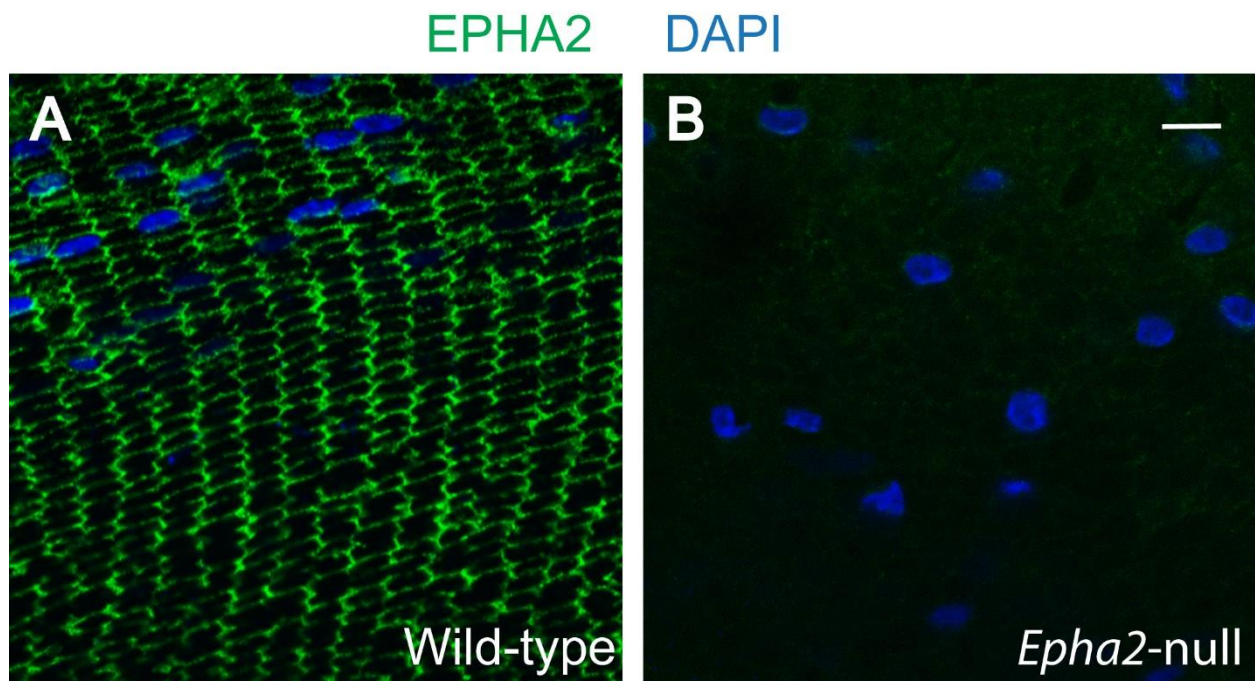
***Epha2* and *Efna5* participate in lens cell pattern-formation**

Yuefang Zhou, Alan Shiels

Appendix A. Supplementary data

Supplementary Fig. 1. Immuno-localization of EPHA2 in the mouse lens. (**A, B**) Anti-EPHA2 labeling of the wild-type lens (**A**) and *Epha2*-null lens (**B**) at P21 showing strong labeling of radial columns of hexagonal cells (particularly the short faces) in the former but not in the latter.

Supplementary Fig. 1



Cell nuclei were stained with DAPI (blue). Scale bar: 10 μm .