

Supplemental Table of Contents

Online Table 1. Average systolic and diastolic blood pressure (mmHg) by age periods in MAP trajectory groups

Online Table 2. Average systolic and diastolic blood pressure (mmHg) by age periods in DBP trajectory groups

Online Table 3. Demographic characteristics and cardiovascular risk factors by DBP trajectory group

Online Table 4. Demographic characteristics and cardiovascular risk factors by MAP trajectory group

Online Table 5. Characteristics in SBP, DBP and BMI by SBP trajectories

Online Table 6. Characteristics in SBP, DBP, and BMI by DBP trajectories

Online Table 7. Characteristics in SBP, DBP and BMI by MAP trajectories

Online Table 8. Pearson correlation coefficients between BMI and BP

Online Table 9. Comparison of eGFR(mL/min/1.73m²) in the different groups

Online Table 10. Number and percentage of subjects with subclinical renal damage in BP trajectory groups

Online Figure 1. Percentage of SBP trajectories by DBP and MAP trajectory groups

Online Figure 2. Percentage of DBP trajectories by SBP and MAP trajectory groups (A) and the percentage of MAP trajectories by SBP and DBP trajectory

Online Figure 3. Trajectories in SBP(A), DBP(B) and MAP(C) in the Hanzhong Adolescent Hypertension Cohort (sensitivity analysis)

Online Table 1. Average systolic and diastolic blood pressure (mmHg) by age periods in MAP trajectory groups

N, %	SBP(mmHg)				DBP(mmHg)			
	Low-Stable	Moderate-Stable	High-Stable	Moderate-Increasing	Low-Stable	Moderate-Stable	High-Stable	Moderate-Increasing
	905(37.2%)	1155(47.5%)	214(8.8%)	156(6.4%)	905(37.2%)	1155(47.5%)	214(8.8%)	156(6.4%)
6-10(Y)	98.1±8.2	100.6±8.4	108.2±9.4	104.8±8.5	61.6±8.0	63.6±8.0	70.9±8.0	68.7±8.4
11-15(Y)	100.8±9.3	104.4±9.9	113.4±9.2	106.7±9.4	62.6±8.2	65.6±8.1	73.2±8.1	67.4±8.7
16-20(Y)	109.8±10.4	117.1±11.0	127.9±11.3	118.9±11.0	67.0±7.9	72.0±8.5	79.8±8.7	74.0±8.2
21-25(Y)	112.3±10.9	120.3±10.9	131.7±11.6	126.9±13.3	69.6±8.3	74.9±7.8	83.1±8.3	78.3±8.5
26-30(Y)	110.2±8.2	120.9±6.9	136.5±6.8	128.0±7.4	70.1±6.4	77.2±8.1	85.0±8.6	87.0±8.3
31-35(Y)	108.2±10.4	122.6±9.8	134.2±9.5	144.5±10.7	71.1±7.7	82.2±8.2	90.2±8.2	102.7±8.8
36-40(Y)	110.2±10.0	123.4±10.7	134.4±11.7	153.3±19.0	70.4±7.6	81.0±8.4	88.9±8.6	104.1±11.0
41-45(Y)	111.6±10.4	125.1±11.5	134.2±11.3	155.3±18.5	69.4±7.3	80.1±8.7	87.7±8.4	102.1±10.8

Online Table 2. Average systolic and diastolic blood pressure (mmHg) by age periods in DBP trajectory groups

N, %	SBP(mmHg)				DBP(mmHg)			
	Low-Stable	Moderate-Stable	Low-Increasing	Moderate-Increasing	Low-Stable	Moderate-Stable	Low-Increasing	Moderate-Increasing
	1165(47.9%)	628(25.8%)	465(19.1%)	172(7.1%)	1165(47.9%)	628(25.8%)	465(19.1%)	172(7.1%)
6-10(Y)	98.5±8.3	104.0±9.0	98.7±8.3	105.0±8.5	61.6±7.8	68.4±7.4	60.2±7.7	69.3±8.8
11-15(Y)	101.8±9.6	108.8±9.8	101.6±9.8	108.0±9.6	63.1±8.0	70.9±7.7	61.4±7.4	69.4±8.1
16-20(Y)	111.9±11.2	121.3±11.5	114.6±11.3	121.0±11.1	67.7±7.8	77.2±8.2	68.5±7.8	76.7±8.8
21-25(Y)	114.5±11.6	123.9±11.9	119.7±11.6	127.7±13.1	70.1±8.1	79.5±7.7	73.7±7.4	80.9±8.5
26-30(Y)	112.8±9.2	127.7±11.4	122.9±7.8	134.7±5.9	70.6±6.4	81.9±8.8	79.0±8.7	88.3±5.2
31-35(Y)	111.3±11.3	122.9±12.6	125.2±9.7	141.8±10.3	72.3±7.6	83.1±8.8	85.7±7.1	101.5±7.8
36-40(Y)	112.7±10.7	124.1±12.0	128.3±12.3	150.6±19.3	71.6±7.8	81.3±8.4	86.3±7.8	103.5±10.7
41-45(Y)	114.4±12.0	125.1±11.5	131.0±14.3	151.8±18.6	70.9±8.2	80.5±8.5	85.0±8.7	102.1±10.4

Online Table 3. Demographic characteristics and cardiovascular risk factors by DBP trajectory group

Parameter	Total, N	Low-Stable	Moderate-Stable	High-Stable	Moderate-Increasing	P value
Male, %	1378	508(43.61%)	383(60.99%)	362(77.85%)	125(72.67%)	< 0.001
Age in 1987(Y)	2430	11(9,14)	12(9,14)	13(10,14)	11(9,14)	< 0.001
Bust in 1987(cm)	2421	60.0(55.3,66.0)	61.5(58.0,68.0)	62.2(58.0,68.0)	61.0(58.2,69.0)	< 0.001
HR in 1987(Times/min)	2425	78(72,84)	80(72,84)	78(72,84)	80(72,84)	0.0008
HR in 2017(Times/min)	1907	72(65,79)	74(67,80)	75(68,82)	76(69,85)	0.0092
BMI in 1987 (kg/m²)	2419	15.6(14.6,17.3)	16.0(14.8,17.7)	16.0(14.9,17.3)	16.0(15.0,17.8)	0.0001
BMI in 2017 (kg/m²)	1904	23.0(21.2,24.8)	24.1(22.3,26.3)	25.1(22.8,27.3)	26.0(23.6,28.8)	< 0.001
WHR in 2017(m)	1901					
Male	1097	0.923±0.057	0.942±0.060	0.957±0.063	0.980±0.056	< 0.001
Female	804	0.880±0.063	0.888±0.062	0.899±0.056	0.909±0.065	0.0057
Occupation,%	2170					0.2369
Farmer	871	418(41.02%)	228(40.35%)	161(37.97%)	64(39.51%)	
Worker	424	174(17.08%)	115(20.35%)	98(23.11%)	37(22.84%)	
Businessman	173	88(8.64%)	34(6.02%)	36(8.49%)	15(9.26%)	
Governor	71	30(2.94%)	20(3.54%)	14(3.30%)	7(4.32%)	
Other	631	309(30.32%)	168(29.73%)	115(27.12%)	39(24.07%)	
Education,%	2206					0.0711
Primary School or Less	179	73(6.99%)	56(9.91%)	44(10.14%)	6(3.70%)	
Middle School	1328	632(60.48%)	323(57.17%)	272(62.67%)	101(62.35%)	
High School	504	243(23.25%)	136(24.07%)	83(19.12%)	42(25.93%)	
College or More	195	97(9.28%)	50(8.85%)	35(8.06%)	13(8.02%)	
Marital Status,%	2255					0.9919
Married	2162	1020(95.77%)	558(96.04%)	426(96.16%)	158(95.18%)	
Divorced	46	23(2.16%)	10(1.72%)	9(2.03%)	4(2.41%)	
Unmarried or Other	47	22(2.07%)	13(2.24%)	8(1.81%)	4(2.41%)	
Smoking,%	1908	330(36.34%)	228(45.60%)	219(59.19%)	83(63.36%)	< 0.001
Drinking,%	1908	216(23.81%)	155(31.00%)	156(42.16%)	48(36.64%)	< 0.001
Hypertension,%	1908	18(1.98%)	55(11.00%)	55(14.86%)	86(65.65%)	< 0.001
Diabetes,%	1908	15(1.65%)	18(3.60%)	12(3.24%)	9(6.92%)	0.0032
Hyperlipidemia,%	1908	50(5.51%)	57(11.40%)	41(11.08%)	21(16.03%)	< 0.001
GLU(mmol/L)	1730	4.51(4.24,4.82)	4.60(4.28,4.95)	4.64(4.34,4.98)	4.73(4.38,5.10)	< 0.001
TC(mmol/L)	1732	4.44(4.01,4.90)	4.49(4.02,5.04)	4.55(4.12,5.17)	4.65(4.18,5.16)	0.0015
Triglycerides(mmol/L)	1732	1.21(0.89,1.70)	1.31(0.94,1.93)	1.62(1.15,2.35)	1.67(1.16,2.27)	< 0.001
LDL-C(mmol/L)	1732	2.46(2.11,2.80)	2.50(2.11,2.88)	2.58(2.19,3.02)	2.62(2.28,3.06)	0.0004
HDL-C(mmol/L)	1732	1.19(1.03,1.37)	1.15(0.97,1.34)	1.07(0.93,1.21)	1.06(0.93,1.21)	< 0.001
Serum uric acid(umol/L)	1732	262.1(213.6,312.8)	285.0(227.9,337.4)	309.1(265.0,367.2)	325.4(261.5,379.4)	< 0.001
Urine uric acid(umol/L)	1671	1295(926,1975)	1296(925,2047)	1289(975,2039)	1541(1094,2333)	0.0342
Serum creatinine(umol/L)	1669	72.55(64.40,83.30)	76.85(68.23,87.10)	79.80(71.10,89.20)	79.10(70.60,87.45)	< 0.001
Urine albumin(mg/L)	1671	6.30(3.50,11.40)	7.85(3.80,12.70)	10.20(5.15,19.20)	14.75(7.60,49.70)	< 0.001
eGFR(mL/min/1.73m²)	1732	98.61(88.63,112.21)	96.86(85.70,110.30)	96.08(86.92,109.04)	95.04(87.28,111.22)	0.1518
uACR(mg/ mmol)	1669	0.872(0.583,1.463)	0.990(0.621,1.653)	1.134(0.696,2.134)	2.233(0.930,4.802)	< 0.001

HR, Heart rate ; BMI, Body mass index; WHR, Waist to hip ratio ; GLU, fasting blood glucose; TC, Total cholesterol ; LDL-C, low-density lipoproteins cholesterol; HDL-C, high-density lipoproteins cholesterol; eGFR, estimated glomerular filtration rate; uACR, urinary albumin to creatinine ratio(mg/mmol).

Online Table 4. Demographic characteristics and cardiovascular risk factors by MAP trajectory group

Parameter	Total, N	Low-Stable	Moderate-Stable	High-Stable	Moderate-Increasing	P value
Male, %	1378	341(37.68%)	768(66.49%)	155(72.43%)	114(73.08%)	< 0.001
Age in 1987(Y)	2430	11(9,14)	12(9,14)	11(10,14)	12(10,14)	0.0002
Bust in 1987(cm)	2421	60.0(55.0,65.8)	61.0(57.0,68.0)	62.0(59.0,68.0)	63.3(60.0,70.0)	< 0.001
HR in 1987(Times/min)	2425	78(72,84)	78(72,84)	80(73.5,84)	78(72,84)	0.0479
HR in 2017(Times/min)	1907	72(66,79)	74(67,80)	75(68,82)	76(68,84)	0.0092
BMI in 1987 (kg/m²)	2419	15.6(14.4,17.3)	15.9(14.8,17.5)	16.1(15.1,17.7)	16.2(15.0,17.9)	< 0.001
BMI in 2017 (kg/m²)	1904	22.8(21.1,24.6)	24.0(22.2,26.4)	25.3(23.3,26.8)	26.1(23.9,29.0)	< 0.001
WHR in 2017(m)	1901					
Male	1097	0.923±0.058	0.942±0.062	0.958±0.051	0.986±0.062	< 0.001
Female	804	0.878±0.062	0.890±0.065	0.900±0.053	0.912±0.060	0.0021
Occupation,%	2170					0.3260
Farmer	871	327(41.08%)	412(39.81%)	72(37.50%)	60(40.82%)	
Worker	424	136(17.09%)	204(19.71%)	51(26.56%)	33(22.45%)	
Businessman	173	69(8.67%)	80(7.73%)	13(6.77%)	11(7.48%)	
Governor	71	22(2.76%)	35(3.38%)	7(3.65%)	7(4.76%)	
Other	631	242(30.40%)	304(29.37%)	49(25.52%)	36(24.49%)	
Education,%	2206					0.0691
Primary School or Less	179	53(6.47%)	99(9.45%)	18(9.38%)	9(6.12%)	
Middle School	1328	485(59.22%)	636(60.69%)	108(56.25%)	99(67.35%)	
High School	504	196(23.93%)	225(21.47%)	52(27.08%)	31(21.09%)	
College or More	195	85(10.38%)	88(8.40%)	14(7.29%)	8(5.44%)	
Marital Status,%	2255					0.6486
Married	2162	804(96.52%)	1025(95.35%)	190(96.94%)	143(94.70%)	
Divorced	46	17(2.04%)	22(2.05%)	3(1.53%)	4(2.65%)	
Unmarried or Other	47	12(1.44%)	28(2.60%)	3(1.53%)	4(2.65%)	
Smoking,%	1908	224(31.11%)	470(52.51%)	91(52.30%)	75(62.50%)	< 0.001
Drinking,%	1908	143(19.89%)	325(36.31%)	56(32.18%)	51(42.50%)	< 0.001
Hypertension,%	1908	10(1.39%)	65(7.26%)	56(32.18%)	83(69.17%)	< 0.001
Diabetes,%	1908	12(1.67%)	28(3.13%)	6(3.45%)	8(6.72%)	0.0139
Hyperlipidemia,%	1908	36(5.01%)	92(10.28%)	21(12.07%)	20(16.67%)	< 0.001
GLU(mmol/L)	1730	4.51(4.23,4.80)	4.60(4.31,4.95)	4.64(4.29,5.01)	4.74(4.38,5.13)	< 0.001
TC(mmol/L)	1732	4.43(3.98,4.89)	4.52(4.06,5.05)	4.54(4.10,5.03)	4.58(4.07,5.18)	0.0195
Triglycerides(mmol/L)	1732	1.18(0.88,1.69)	1.41(0.99,2.09)	1.51(1.03,2.05)	1.69(1.23,2.28)	< 0.001
LDL-C(mmol/L)	1732	2.44(2.08,2.78)	2.53(2.16,2.97)	2.55(2.18,2.96)	2.56(2.20,3.01)	0.0013
HDL-C(mmol/L)	1732	1.20(1.05,1.38)	1.12(0.95,1.30)	1.11(0.97,1.28)	1.05(0.93,1.19)	< 0.001
Serum uric acid(umol/L)	1732	252.1(209.2,303.2)	292.9(242.2,344.7)	307.8(250.9,352.7)	325.3(260.7,379.5)	< 0.001
Urine uric acid(umol/L)	1671	1282(910,1926)	1316(962,2082)	1303(918,2104)	1525(1089,2112)	0.0551
Serum creatinine(umol/L)	1669	71.15(63.58,82.60)	78.50(69.45,87.40)	78.20(70.83,90.05)	78.95(69.40,87.38)	< 0.001
Urine albumin(mg/L)	1671	6.10(3.30,11.30)	8.10(4.50,14.10)	9.40(5.00,21.50)	14.90(7.50,51.10)	< 0.001
eGFR(mL/min/1.73m²)	1732	98.93(88.95,113.14)	96.65(87.00,109.18)	95.73(84.69,110.84)	95.42(86.16,111.32)	0.0376
uACR(mg/ mmol)	1669	0.868(0.583,1.398)	0.990(0.635,1.670)	1.195(0.716,2.572)	2.323(0.988,4.197)	< 0.001

HR, Heart rate ; BMI, Body mass index; WHR, Waist to hip ratio ; GLU, fasting blood glucose; TC, Total cholesterol ; LDL-C, low-density lipoproteins cholesterol; HDL-C, high-density lipoproteins cholesterol; eGFR, estimated glomerular filtration rate; uACR, urinary albumin to creatinine ratio(mg/mmol)..

Online Table 5. Characteristics in SBP,DBP and BMI by SBP trajectories

Group	Low-Stable	Moderate-Stable	High-Stable	Moderate-Increasing	P value
Prepuberty (6–11 y)					
Age (Y)	9(8,10)	9(8,10)	9(8,11)	10(8,11)	0.7726
SBP (mmHg)	99.5±9.2	102.4±9.1	107.0±9.6	106.2±11.4	< 0.001
DBP (mmHg)	63.1±8.1	64.6±8.7	69.2±8.6	68.1±10.8	< 0.001
BMI (kg/m ²)	15.1±1.9	15.3±2.1	15.6±1.6	15.8±2.3	0.0124
Puberty (12–19 y)					
Age (Y)	13(12,14)	13(12,14)	13(13,14)	13(13,14)	0.4193
SBP (mmHg)	101.7±10.8	105.4±10.3	110.6±10.9	106.6±11.3	< 0.001
DBP (mmHg)	63.6±8.6	65.7±8.5	68.8±8.8	66.7±8.9	< 0.001
BMI (kg/m ²)	17.2±2.5	17.3±2.7	17.4±2.6	17.7±2.9	0.1916
Young adulthood (20–35 y)					
Age (Y)	22(20,32)	22(20,33)	22(20,29)	22(20,29)	0.8054
SBP (mmHg)	111.3±13.4	119.8±12.3	128.5±13.6	124.3±15.1	< 0.001
DBP (mmHg)	72.0±9.5	75.7±10.2	79.2±11.9	79.2±12.0	< 0.001
BMI (kg/m ²)	21.3±2.9	21.8±3.1	22.1±3.2	22.2±4.1	0.0015
Middle-aged adulthood (36–45 y)					
Age (Y)	39(37,40)	39(37,40)	39(37,40)	39(37,41)	0.1248
SBP (mmHg)	112.4±14.3	121.4±12.2	132.5±13.8	142.0±22.8	< 0.001
DBP (mmHg)	73.4±10.2	79.0±10.2	86.5±11.2	93.8±16.1	< 0.001
BMI (kg/m ²)	23.2±3.2	24.2±3.4	24.8±3.7	25.7±4.0	< 0.001

Online Table 6. Characteristics in SBP, DBP and BMI by DBP trajectories

Group	Low-Stable	Moderate-Stable	High-Stable	Moderate-Increasing	P value
Prepuberty (6–11 y)					
Age (Y)	9(8,10)	9(8,10)	9(8,10)	9(8,10)	0.3367
SBP (mmHg)	100.9±9.0	105.3±10.0	100.2±9.5	104.2±10.1	< 0.001
DBP (mmHg)	63.2±8.2	68.7±8.2	62.3±9.1	67.8±9.6	< 0.001
BMI (kg/m ²)	15.2±1.9	15.5±2.3	15.3±2.0	15.5±1.8	0.0580
Puberty (12–19 y)					
Age (Y)	13(12,14)	13(12,14)	13(13,14)	13(12,14)	0.1090
SBP (mmHg)	104.0±10.9	107.8±10.6	102.6±10.5	107.8±10.9	< 0.001
DBP (mmHg)	64.1±8.5	69.3±8.3	62.7±7.7	68.4±8.7	< 0.001
BMI (kg/m ²)	17.3±2.6	17.5±2.8	17.0±2.4	17.7±2.7	0.0044
Young adulthood (20–35 y)					
Age (Y)	22(21,33)	22(20,31)	22(20,28)	22(20,29)	0.3345
SBP (mmHg)	115.0±14.2	122.1±12.5	119.8±12.5	127.4±14.9	< 0.001
DBP (mmHg)	72.5±9.9	78.4±9.4	75.1±10.3	83.5±13.4	< 0.001
BMI (kg/m ²)	21.5±2.9	21.9±3.0	21.5±3.2	22.5±4.0	0.0032
Middle-aged adulthood (36–45y)					
Age (Y)	39(37,40)	39(37,40)	39(38,40)	39(37,40)	0.1616
SBP (mmHg)	115.1±13.9	123.4±13.3	126.2±13.4	139.5±20.7	< 0.001
DBP (mmHg)	73.7±9.8	80.4±9.5	84.2±9.6	95.4±15.3	< 0.001
BMI (kg/m ²)	23.3±3.2	24.2±3.6	24.9±3.6	25.7±3.7	< 0.001

Online Table 7. Characteristics in SBP,DBP and BMI by MAP trajectories

Group	Low-Stable	Moderate-Stable	High-Stable	Moderate-Increasing	P value
Prepuberty (6–11 y)					
Age (Y)	9(8,10)	9(8,10)	9(8,11)	9(8,11)	0.4275
SBP (mmHg)	100.8±9.0	101.8±9.3	109.1±10.3	103.7±9.9	< 0.001
DBP (mmHg)	63.3±8.0	64.5±8.8	72.0±8.3	66.2±9.9	< 0.001
BMI (kg/m ²)	15.1±2.0	15.4±2.0	15.8±2.4	15.6±2.1	0.0026
Puberty (12–19 y)					
Age (Y)	13(12,14)	13(12,14)	13(12,14)	14(13,14)	0.3386
SBP (mmHg)	103.2±10.7	104.9±10.6	111.6±10.2	106.7±11.4	< 0.001
DBP (mmHg)	63.8±8.8	65.5±8.2	71.8±8.3	66.4±8.6	< 0.001
BMI (kg/m ²)	17.2±2.6	17.3±2.5	17.6±2.8	17.7±3.0	0.0877
Young adulthood (20–35 y)					
Age (Y)	22(21,33)	22(20,32)	22(20,29)	22(20,28)	0.1792
SBP (mmHg)	113.0±14.2	120.4±12.0	129.0±13.2	124.2±15.4	< 0.001
DBP (mmHg)	71.8±9.8	76.2±10.0	81.7±10.6	79.5±13.5	< 0.001
BMI (kg/m ²)	21.4±3.0	21.8±3.1	22.3±3.2	22.0±3.9	0.0027
Middle-aged adulthood (36–45 y)					
Age (Y)	39(37,40)	39(38,40)	38(37,40)	39(37,40)	0.5479
SBP (mmHg)	113.3±14.0	122.8±12.4	131.5±14.0	140.2±21.5	< 0.001
DBP (mmHg)	72.7±10.0	80.4±9.4	86.4±10.6	95.1±15.7	< 0.001
BMI (kg/m ²)	23.1±3.1	24.4±3.5	24.7±3.6	25.8±3.9	< 0.001

Online Table 8. Pearson Correlation Coefficients Between BMI and BP

Group	Prepuberty BMI	Puberty BMI	Young adulthood BMI	Middle-aged adulthood BMI
Prepuberty SBP	0.239*	---	---	---
Prepuberty DBP	0.157*	---	---	---
Prepuberty MAP	0.205*	---	---	---
Puberty SBP	---	0.350*	---	---
Puberty DBP	---	0.190*	---	---
Puberty MAP	---	0.278*	---	---
Young adulthood SBP	---	---	0.226*	---
Young adulthood DBP	---	---	0.360*	---
Young adulthood MAP	---	---	0.334*	---
Middle-aged adulthood SBP	---	---	---	0.336*
Middle-aged adulthood DBP	---	---	---	0.333*
Middle-aged adulthood MAP	---	---	---	0.350*

* $P < 0.01$.

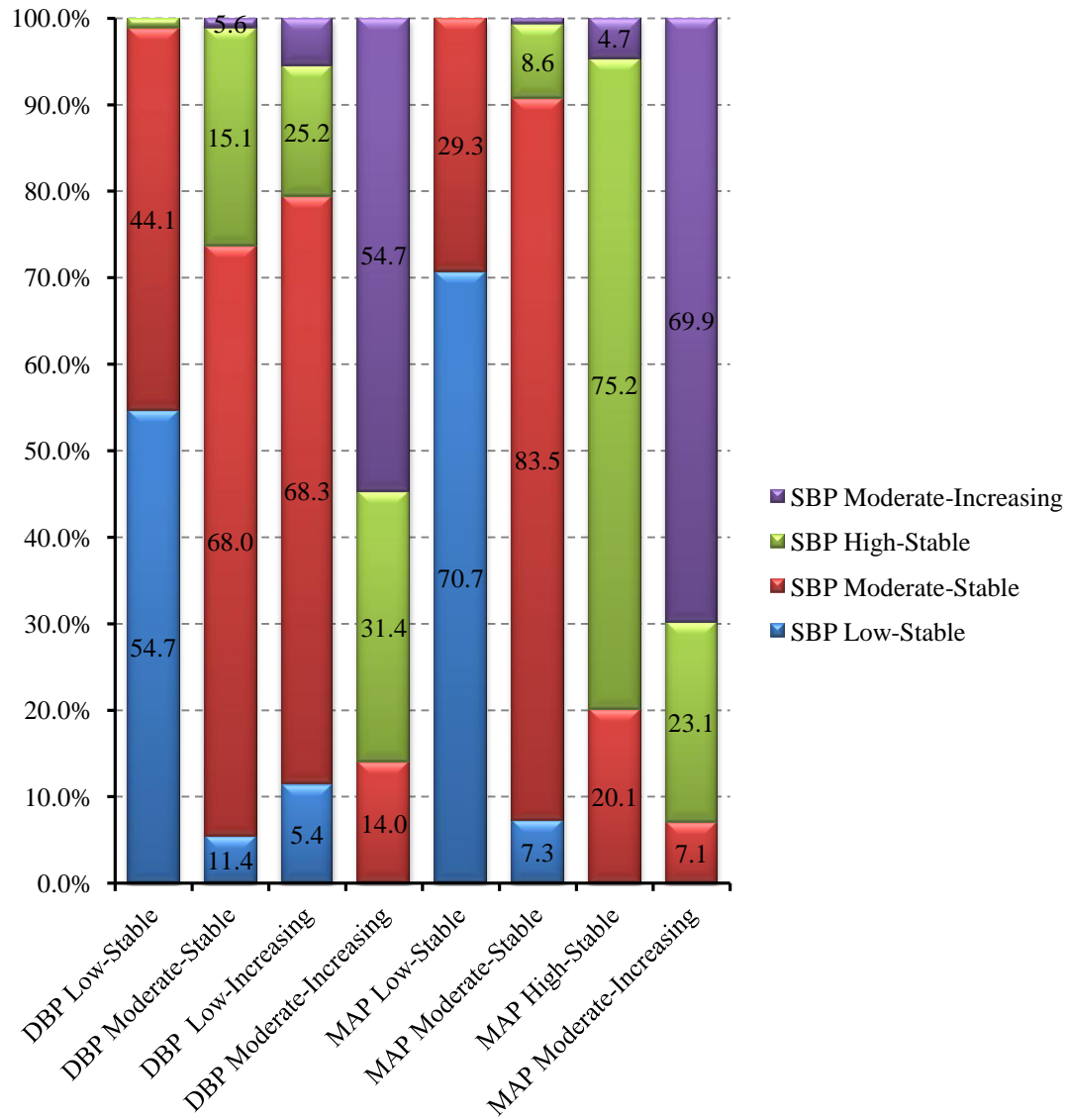
Online Table 9. Comparison of eGFR(mL/min/1.73m²) in the different groups

	Low-Stable	Moderate-Stable	High- Stable (OR Low- Increasing)	Moderate- Increasing	Total
SBP Trajectory Group	534(30.83%)	888(51.27%)	216(12.47%)	94(5.43%)	1732(100%)
eGFR ≥ 90	386(72.28%)	615(69.26%)	143(66.20%)	63(67.02%)	1207(69.69%)
60 ≤ eGFR < 90	145(27.15%)	267(30.07%)	72(33.33%)	30(31.91%)	514(29.68%)
30 ≤ eGFR < 60	3(0.56%)	6(0.68%)	1(0.46%)	1(1.06%)	11(0.64%)
DBP Trajectory Group	840(48.50%)	444(25.64%)	327(18.88%)	121(6.99%)	1732(100%)
eGFR ≥ 90	599(71.31%)	303(68.24%)	222(67.89%)	83(68.60%)	1207(69.69%)
60 ≤ eGFR < 90	237(28.21%)	138(31.08%)	104(31.80%)	35(28.93%)	514(29.68%)
30 ≤ eGFR < 60	4(0.48%)	3(0.68%)	1(0.31%)	3(2.48%)	11(0.64%)
MAP Trajectory Group	674(38.91%)	788(45.50%)	158(9.12%)	112(6.47%)	1732(100%)
eGFR ≥ 90	489(72.55%)	538(68.27%)	104(65.82%)	76(67.86%)	1207(69.69%)
60 ≤ eGFR < 90	184(27.30%)	243(30.84%)	53(33.54%)	34(30.36%)	514(29.68%)
30 ≤ eGFR < 60	1(0.15%)	7(0.89%)	1(0.63%)	2(1.79%)	11(0.64%)

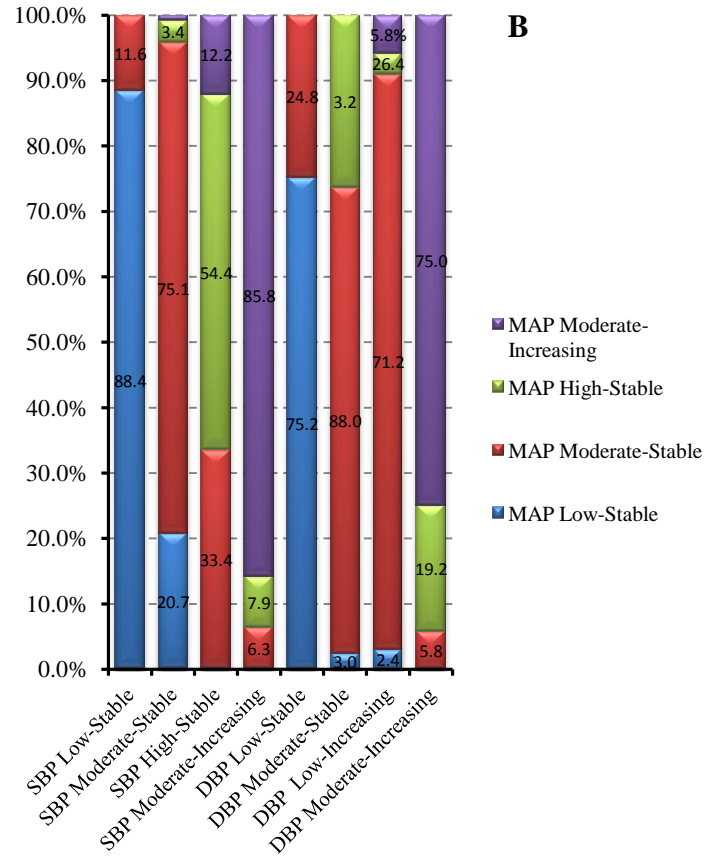
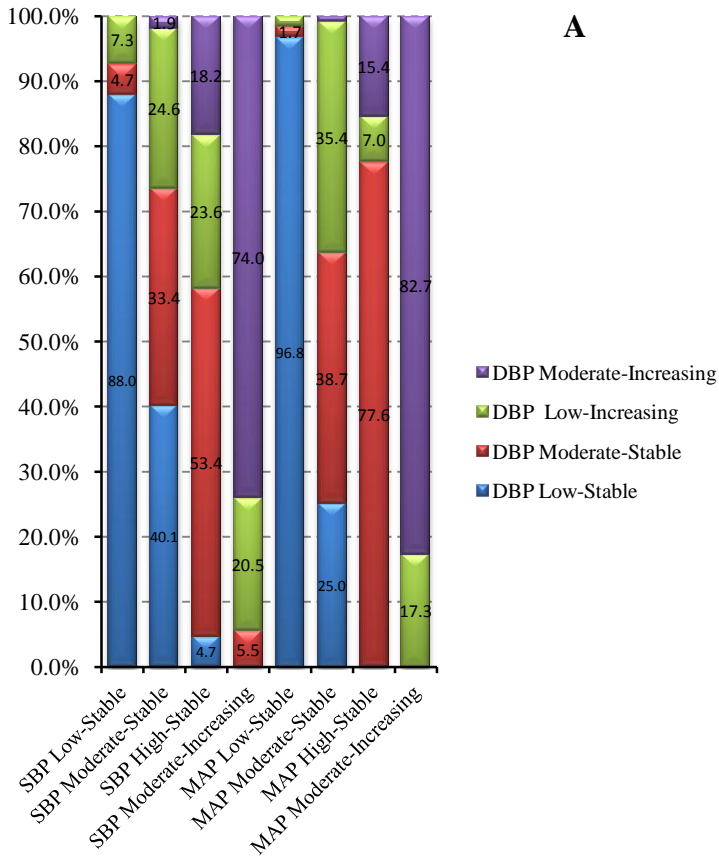
Online Table 10. Number and percentage of subjects with subclinical renal damage in BP trajectory groups

	Low-Stable	Moderate-Stable	High- Stable (OR Low- Increasing)	Moderate- Increasing	Total
SBP Trajectory Group	535(30.78%)	892(51.32%)	217(12.49%)	94(5.41%)	1738(100%)
30≤eGFR < 60	3(0.56%)	6(0.67%)	1(0.46%)	1(1.06%)	11(0.63%)
Positive uACR	39(7.29%)	95(10.65%)	46(21.20%)	41(43.62%)	221(12.72%)
30≤eGFR < 60 or positive uACR	42(7.85%)	98(10.99%)	47(21.66%)	41(43.62%)	228(13.12%)
DBP Trajectory Group	844(48.56%)	444(25.55%)	329(18.93%)	121(6.96%)	1738(100%)
30≤eGFR < 60	4(0.47%)	3(0.68%)	1(0.30%)	3(2.48%)	11(0.63%)
Positive uACR	64(7.58%)	49(11.04%)	58(17.63%)	50(41.32%)	221(12.72%)
30≤eGFR < 60 or positive uACR	67(7.94%)	52(11.71%)	58(17.63%)	51(42.15%)	228(13.12%)
MAP Trajectory Group	678(39.01%)	790(45.45%)	158(9.09%)	112(6.44%)	1738(100%)
30≤eGFR < 60	1(0.15%)	7(0.89%)	1(0.63%)	2(1.79%)	11(0.63%)
Positive uACR	46(6.78%)	93(11.77%)	37(23.42%)	45(40.18%)	221(12.72%)
30≤eGFR < 60 or positive uACR	47(6.93%)	98(12.41%)	37(23.42%)	46(41.07%)	228(13.12%)

eGFR, estimated glomerular filtration rate(mL/min/1.73m²) ; uACR, urinary albumin to creatinine ratio(mg/mmol).

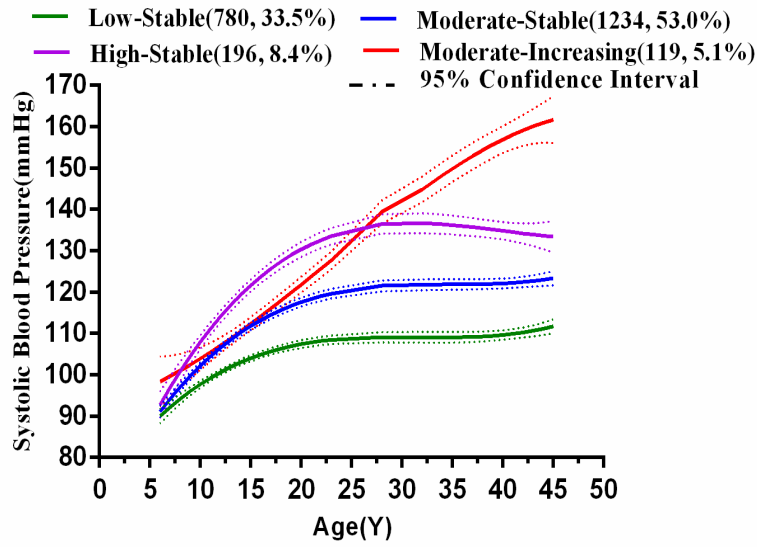


Online Figure 1. Percentage of SBP trajectories by DBP and MAP trajectory groups

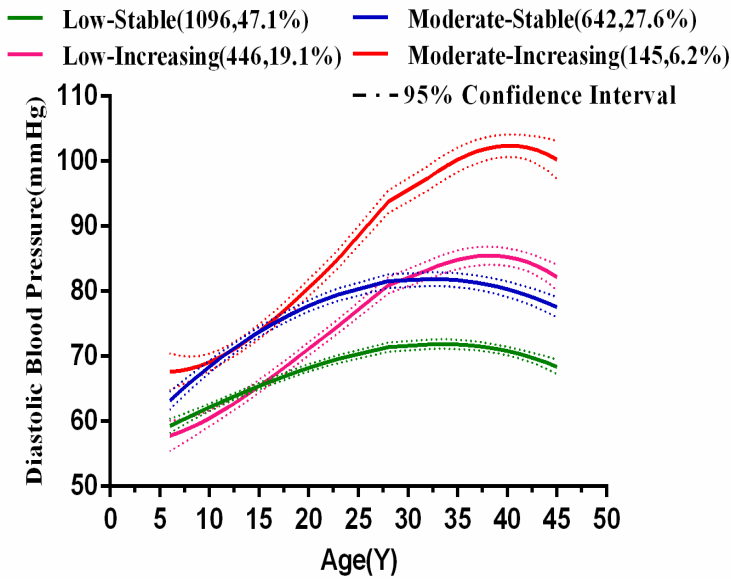


Online Figure 2. Percentage of DBP trajectories by SBP and MAP trajectory groups(A) and the percentage of MAP trajectories by SBP and DBP trajectory

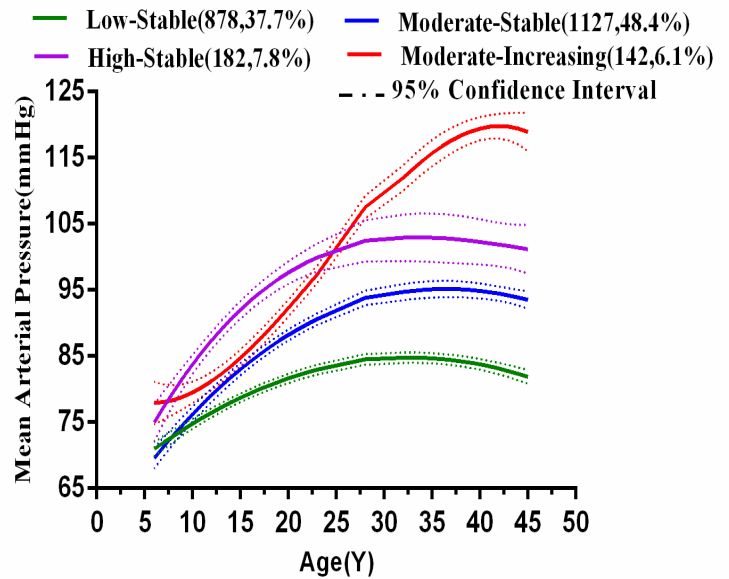
A Systolic Blood Pressure



B Diastolic Blood Pressure



C Mean Arterial Pressure



Online Figure 3. Trajectories in SBP(A) , DBP(B) and MAP(C) in the Hanzhong Adolescent Hypertension Cohort (sensitivity analysis)