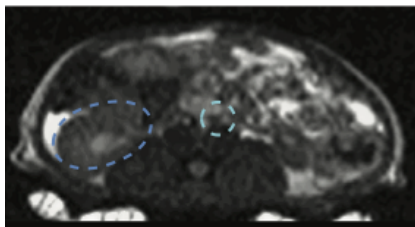


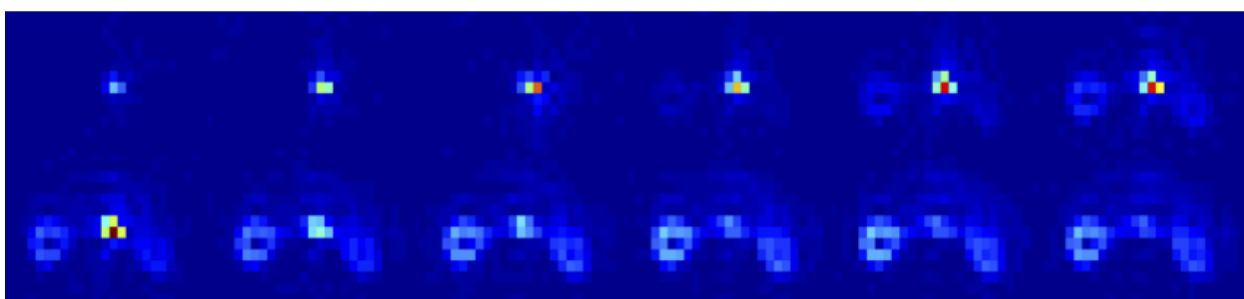
Supporting Figures

anatomical

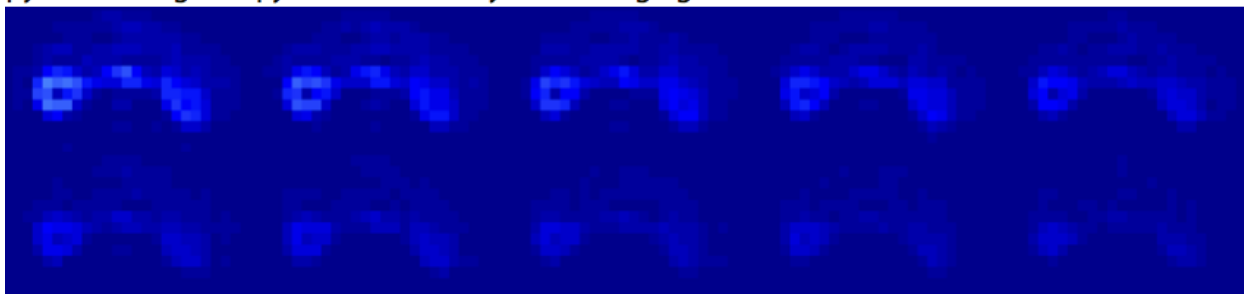


○ vessel
○ left kidney
(ROI for tracking and B₁ calibration)

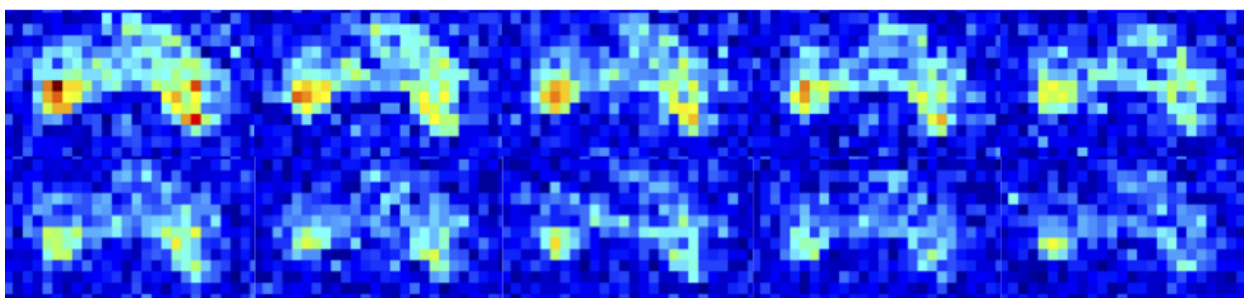
bolus tracking



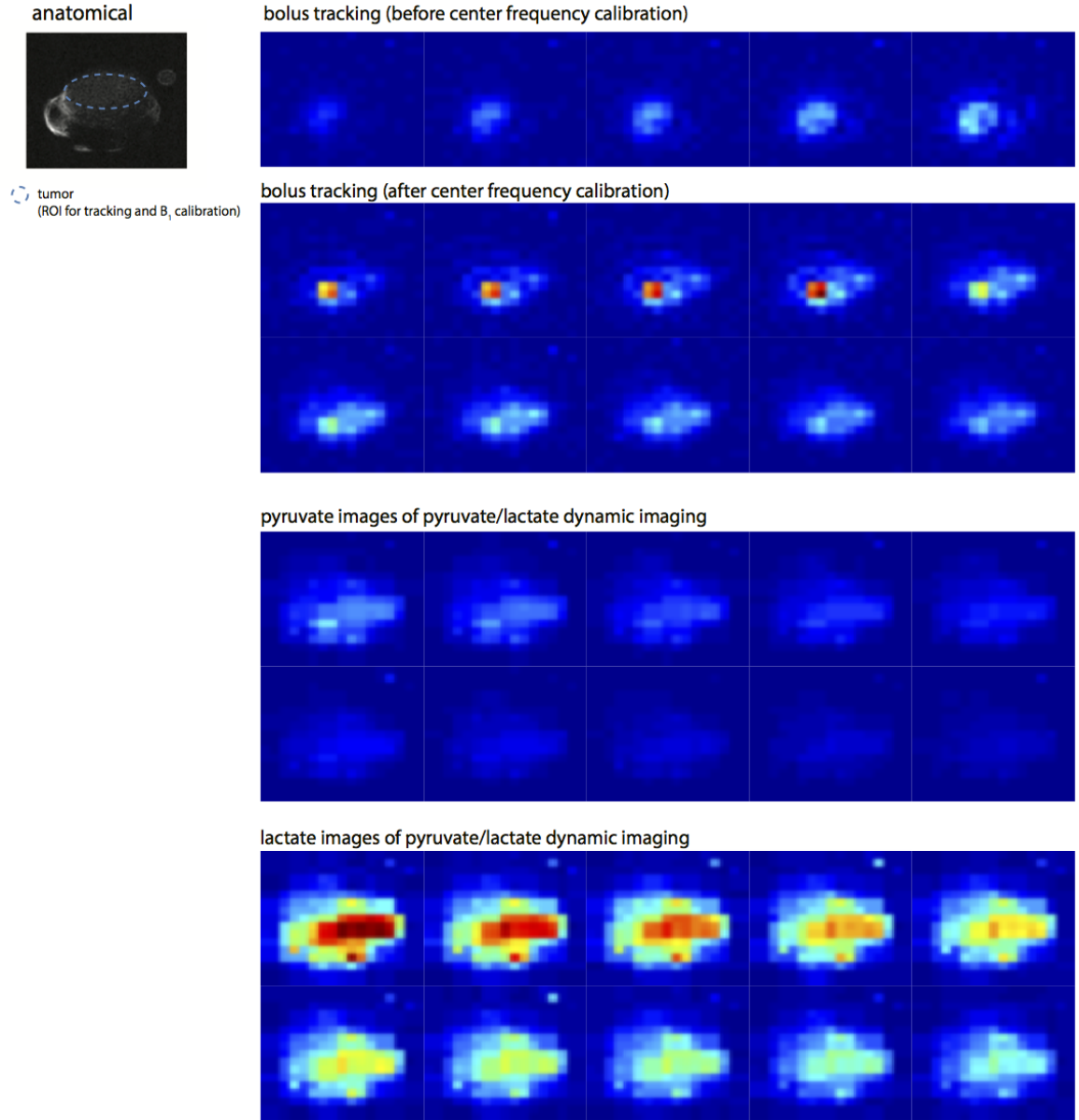
pyruvate images of pyruvate/lactate dynamic imaging



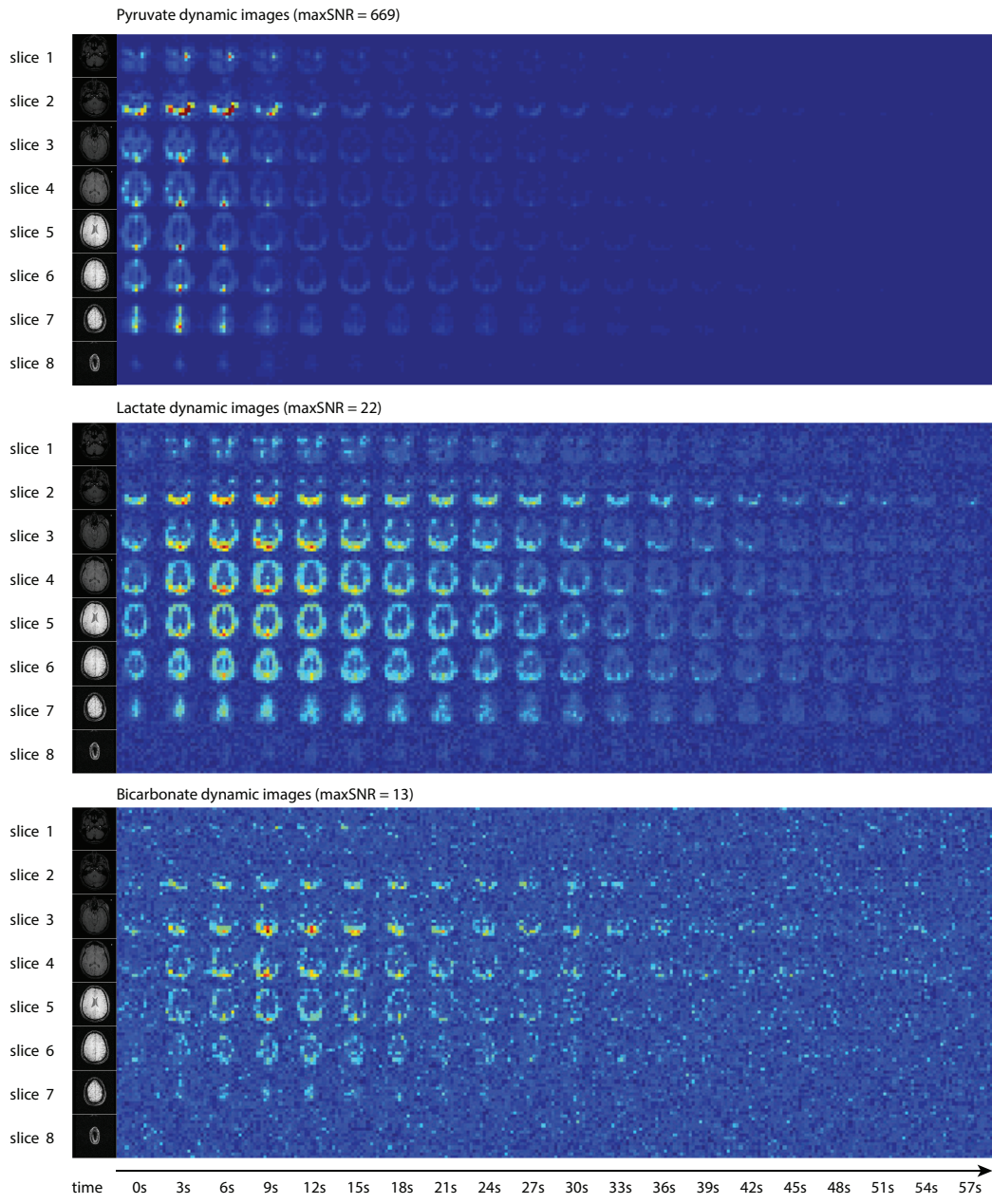
lactate images of pyruvate/lactate dynamic imaging



Supporting Figure S1: Results of bolus tracking and pyruvate/lactate dynamic imaging of the experiment described in Fig. 4. Fig. 4 shows every other ¹³C image in this figure.



Supporting Figure S2: Results of bolus tracking and pyruvate/lactate dynamic imaging of the experiment described in Fig. 5. Fig. 5 shows every other ^{13}C image in this figure.



Supporting Figure S3: The first twenty time points of multi-slice dynamic images for the hyperpolarized $[1-^{13}\text{C}]$ pyruvate human study as described in Fig. 7.