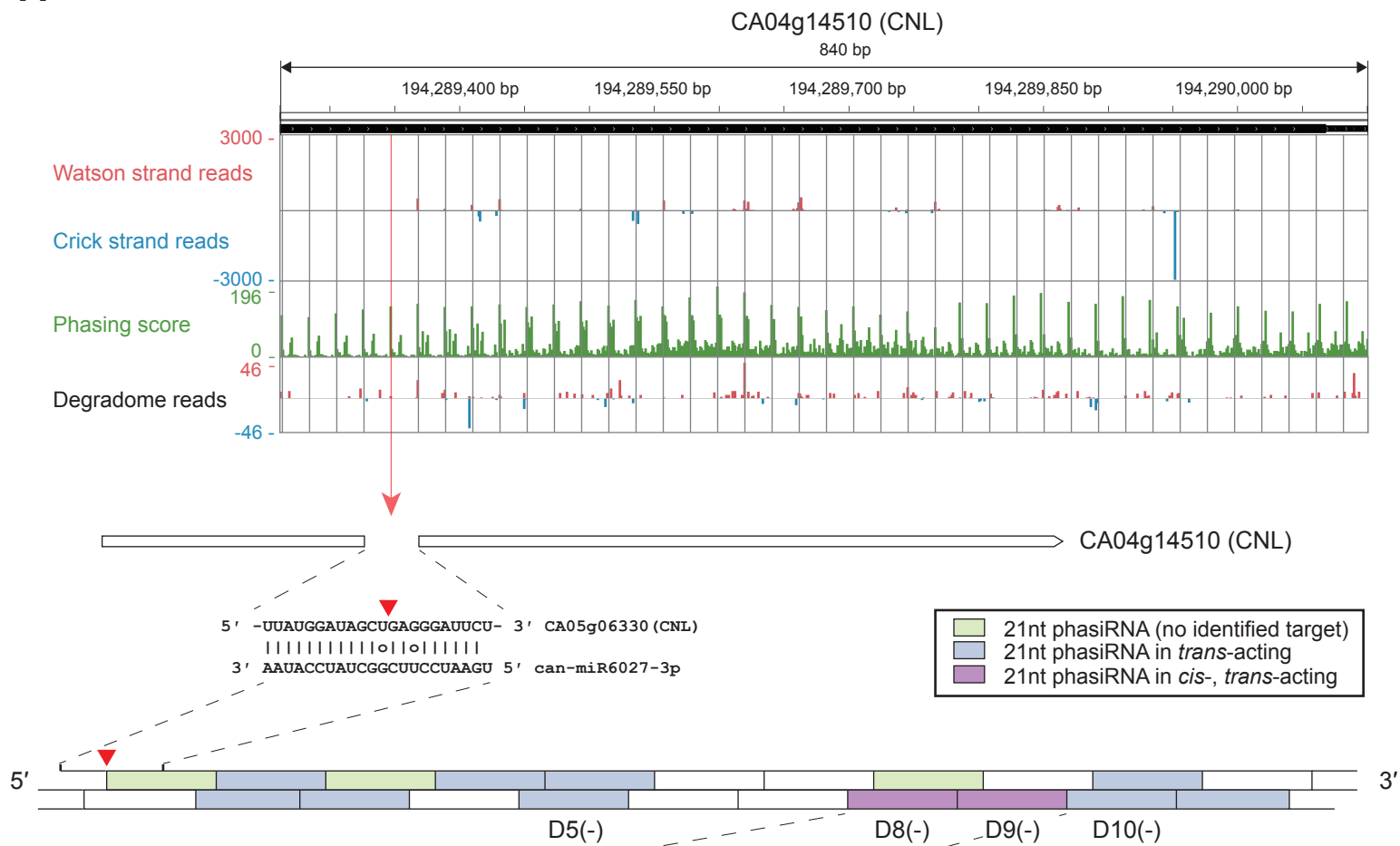
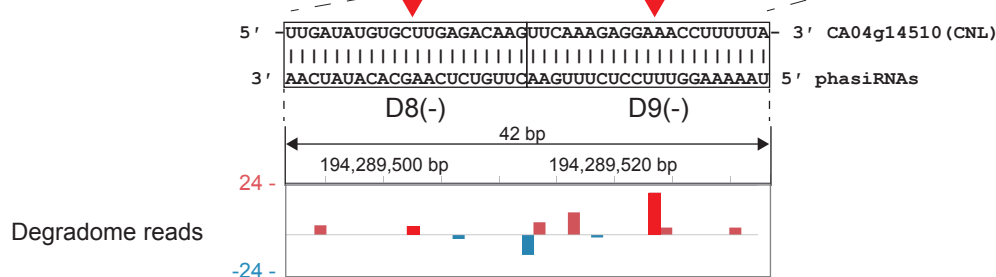
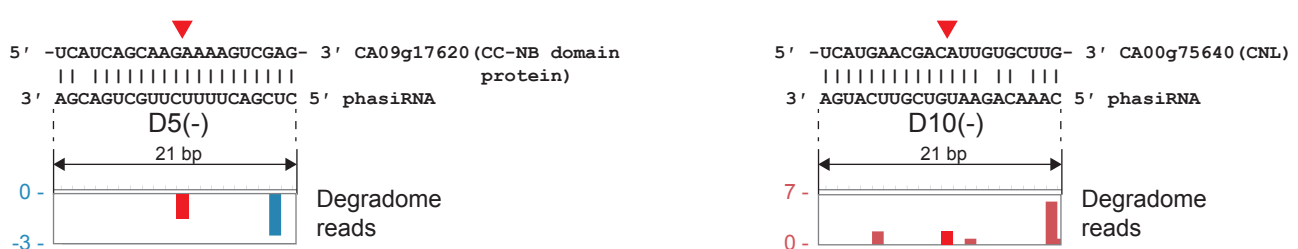


**A****B****C**

## Figure S5. can-miR6027 induces phasiRNA biogenesis by cleaving CNL

(A) Mapping results of small RNA and degradome reads normalized by mapping count to the genome and phasing score data were viewed using IGV. Red arrow indicates the cleavage site by can-miR6027. Examples of (B) cis-acting phasiRNAs and (C) trans-acting phasiRNAs. Red triangles indicate the cleavage sites by small RNAs. In degradome reads panel, pale red color indicates reads mapped to Watson strand and blue color indicates those mapped to Crick strand in the genome.