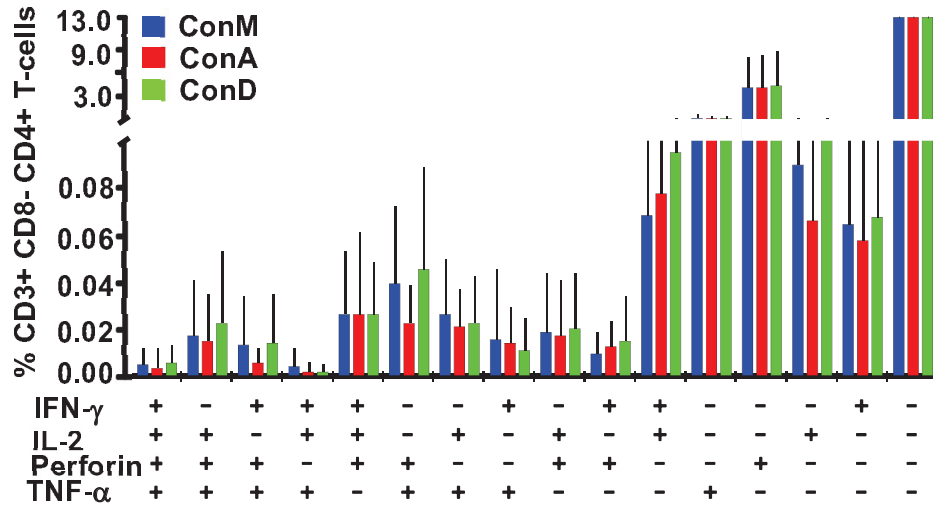


Supplimentary figures 1A:

ConM group specific peptides can detect for HIV Specific responses at similar frequencies as ConA and ConD clade specific peptides in CD4+ T-cells



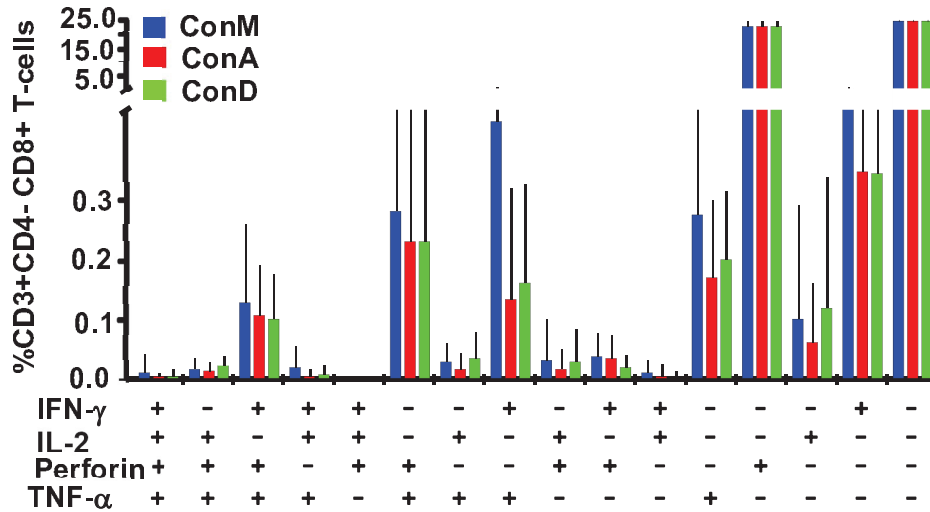
Student's t-Test Results

Category	Antigen: ConA	Antigen: ConD
+ + + +	0.710	0.754
- + + +	0.812	0.676
+ - + +	0.256	0.964
+ + - +	0.361	0.285
+ + + -	0.990	0.986
- - + +	0.180	0.717
- + - +	0.580	0.707
+ - - +	0.880	0.666
- + + -	0.858	0.897
+ - + -	0.484	0.410
+ + - -	0.829	0.547
- - - +	0.838	0.796
- - + -	0.969	0.862
- + - -	0.613	0.880
+ - - -	0.779	0.922
- - - -	0.996	0.849

Compared to overlay: Antigen: ConM

Supplementary figures 1B

ConM group specific peptides can detect for HIV Specific responses at similar frequencies as ConA and ConD clade specific peptides in CD8+ T-cells

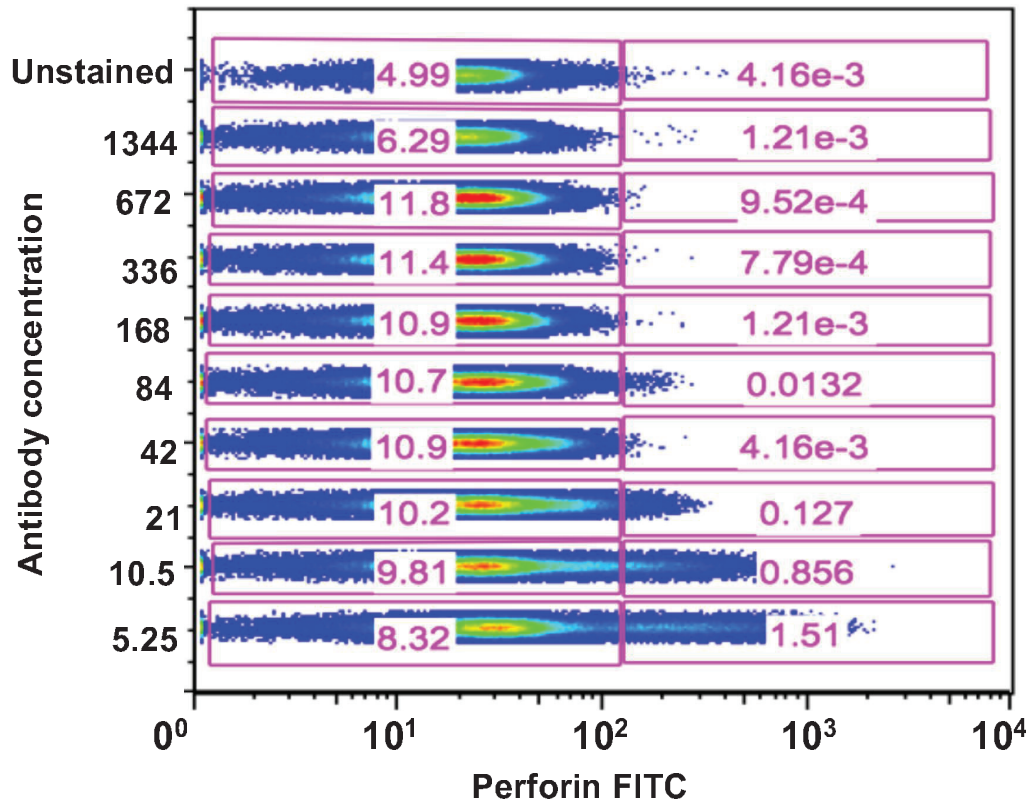


Student's t-Test Results

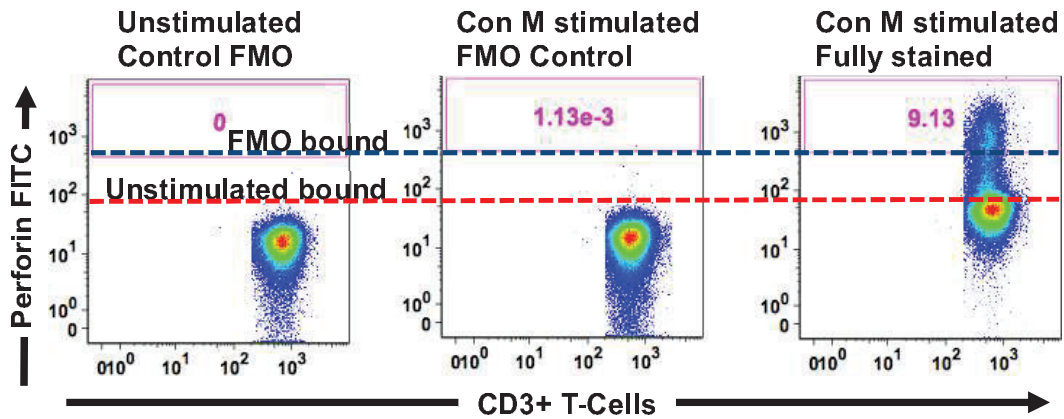
Category	Antigen: ConA	Antigen: ConD
+ + + +	0.542	0.681
- + + +	0.535	0.547
+ - + +	0.660	0.572
+ + - +	0.238	0.412
+ + + -	0.343	0.343
- - + +	0.695	0.692
- + - +	0.464	0.710
+ - - +	0.069	0.090
- + + -	0.608	0.913
+ - + -	0.792	0.201
+ + - -	0.449	0.198
- - - +	0.294	0.441
- - + -	0.998	0.966
- + - -	0.587	0.849
+ - - -	0.169	0.132
- - - -	0.863	0.913

Compared to overlay: Antigen: ConM

Supplementary figure 2A: Concatenation gates for Perforin FITC titration



Supplementary figure 2B: Fluorescence Minus One (FMO) gating for perforin



Supplementary Figure 3: Much Higher frequencies of CD4+ and CD8+ T-cells were detected when specimens were stimulated with SEB superantigen

