

Supporting information

The wheat ABC transporter Lr34 modifies the lipid environment at the plasma membrane

Johannes P. Deppe¹, Ritta Rabbat¹, Stefan Hörtensteiner¹, Beat Keller¹, Enrico Martinoia¹ and Rosa L. López-Marqués^{2*}

¹Department of Plant and Microbial Biology, University of Zürich (UZH), Zollikerstrasse 107, 8008 Zürich, Switzerland

²Department of Plant and Environmental Sciences, University of Copenhagen, Thorvaldsensvej 40, DK-1871 Frederiksberg C, Denmark

*To whom correspondence should be addressed: Johannes Deppe, Institute of Plant and Microbial Biology, University of Zürich (UZH), 8008 Zürich, Switzerland; Telephone: +41 (0)44 63 48211; E-mail: johannes.deppe@botinst.uzh.ch or Rosa L. López-Marqués, Department of Plant and Environmental Sciences, University of Copenhagen, DK-1871 Frederiksberg C, Denmark; Telephone: +45-35332602; E-mail: rlo@plen.ku.dk

Contains Figure S1

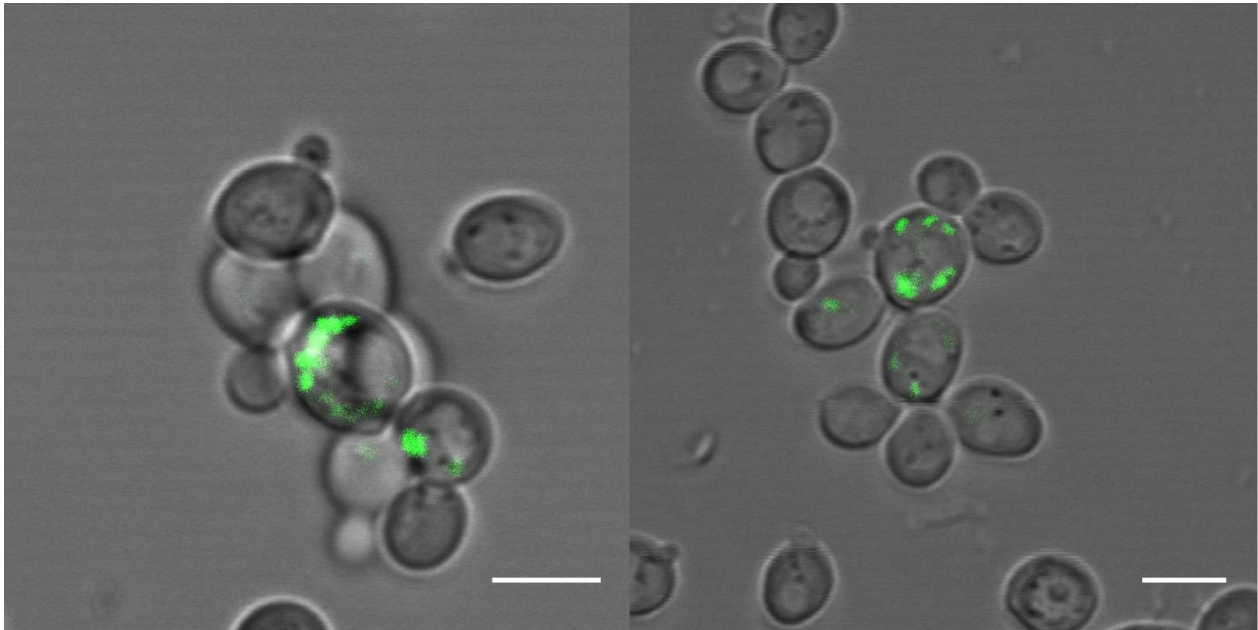


Figure S1 Localization of Lr34 in yeast BY4741 wt cells | Yeast cells transformed with a plasmids for the expression of GFP-tagged Lr34res (left) and Lr34sus (right), respectively, were grown to exponential growth phase ($OD_{600}=1-2$) and analyzed by fluorescence microscopy to detect GFP-tagged Lr34 protein. Scale bars, 5 μm .