

Electronic supplementary material

Comparative Effectiveness and Safety of Monoclonal Antibodies (Bevacizumab, Cetuximab, and Panitumumab) in Combination with Chemotherapy for Metastatic Colorectal Cancer: A Systematic Review and Meta-Analysis.

BioDrugs

Wânia Cristina da Silva, Wânia Eloisa de Araujo, Ellias Magalhães Abreu Lima, Jessica Barreto dos Santos, Michael Ruberson Silva, Paulo Henrique Ribeiro Fernandes Almeida, Francisco de Assis Acurcio, Brian Godman*, Amanj Kurdi, Mariângela Leal Cherchiglia, Eli Iola Gurgel Andrade

*Author for correspondence: Strathclyde Institute of Pharmacy and Biomedical Sciences, University of Strathclyde, Glasgow G4 0RE, United Kingdom. Email: brian.godman@strath.ac.uk and Division of Clinical Pharmacology, Karolinska Institute, Karolinska University Hospital Huddinge, SE-141 86, Stockholm, Sweden. Email: Brian.Godman@ki.se

Tables

Table 1E: Search Strategies

Databases	Search strategies	Studies
		November 2017
The Cochrane Library	#1 MeSH descriptor: [Colorectal Neoplasms] explode all trees #2 Colorectal Neoplasms:ti,ab,kw (Word variations have been searched) #3 Colorectal Cancer:ti,ab,kw (Word variations have been searched) #4 #1 or #2 or #3 #5 "cetuximab":ti,ab,kw (Word variations have been searched) #6 erbitux:ti,ab,kw (Word variations have been searched) #7 panitumumab: ti,ab,kw (Word variations have been searched) #8 vectibix:ti,ab,kw (Word variations have been searched) #9 bevacizumab:ti,ab,kw (Word variations have been searched) #10 avastin:ti,ab,kw (Word variations have been searched) #11 #5 or #6 or #7 or #8 or #9 or #10 #12 #4 and #11	733
Medline (Via Pubmed)	((((((((((((((colorectal neoplasms[MeSH Terms]) OR colorectal neoplasms[Text Word]) OR Colorectal Neoplasm[Text Word]) OR Colorectal Tumors[Text Word]) OR Colorectal Tumor[Text Word]) OR Colorectal Carcinoma[Text Word]) OR Carcinomas, Colorectal[Text Word]) OR Colorectal Carcinomas[Text Word]) OR Colorectal Cancer[Text Word]) OR Cancer, Colorectal[Text Word]) OR Cancers, Colorectal[Text Word]) OR Colorectal Cancers[Text Word])) AND (((((((((((((((cetuximab[Supplementary Concept]) OR cetuximab[Text Word]) OR IMC C225[Text Word]) OR IMC-C225[Text Word]) OR MAb C225[Text Word]) OR C225[Text Word]) OR Erbitux[Text Word]) OR panitumumab[Supplementary Concept]) OR panitumumab[Text Word]) OR ABX-EGF monoclonal antibody[Text Word]) OR ABX-EGF MAb[Text Word]) OR Vectibix[Text Word]) OR bevacizumab[Supplementary Concept]) OR bevacizumab[Text Word]) OR Avastin[Text Word]))) AND (("Cohort Studies"[Mesh]) OR (cohort study) OR (studies, cohort) OR (study, cohort) OR (concurrent studies) OR (studies, concurrent) OR (concurrent study) OR (study, concurrent) OR (historical cohort studies) OR (studies, historical cohort) OR (cohort studies, historical) OR (cohort study, historical) OR (historical cohort study) OR (study, historical cohort) OR (analysis, cohort) OR (analysis, cohort) OR (cohort analyses) OR (cohort analysis) OR (closed cohort studies) OR (cohort studies, closed) OR (closed cohort study) OR (cohort study, closed) OR (study, closed cohort) OR	1107

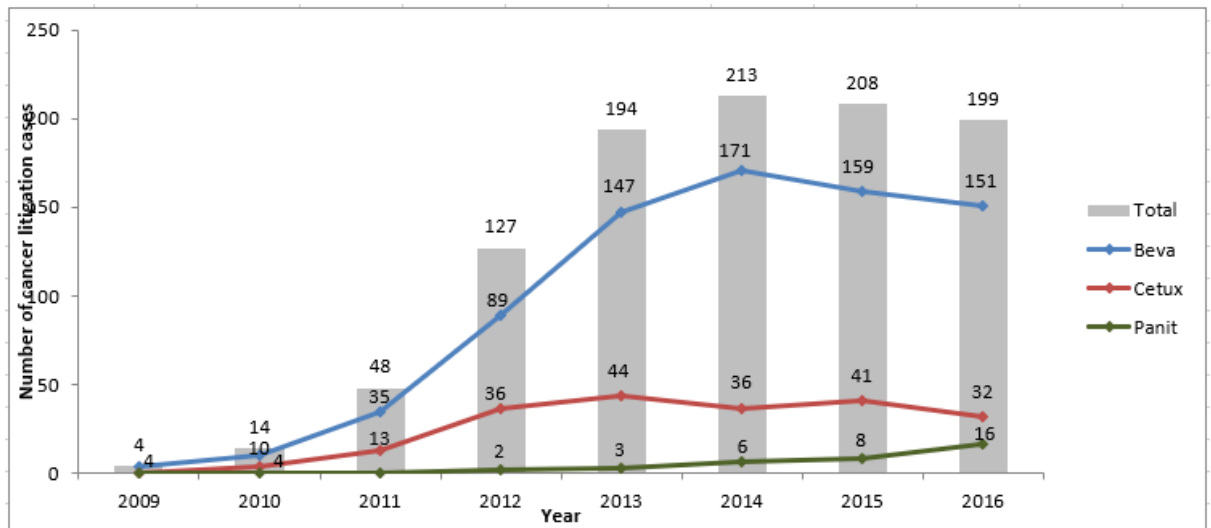
(studies, closed cohort) OR (incidence studies) OR (incidence study) OR (studies, incidence) OR (study, incidence) OR (cohort studies) OR (cohort) OR (cohort analysis) OR (cohort study) OR (prospective cohort) OR (retrospective cohort) OR (retrospective cohort study) OR (prospective cohort study) OR ("Follow-Up Studies"[Mesh]) OR (follow up studies) OR (follow-up study) OR (studies, follow-up) OR (study, follow-up) OR followup studies OR (followup study) OR (studies, followup) OR (study, followup) OR ("Epidemiologic Studies"[Mesh] OR "Cross-Sectional Studies"[Mesh] OR "Retrospective Studies"[Mesh] OR "Longitudinal Studies"[Mesh] OR "Prospective Studies"[Mesh]))

Lilacs (tw:((tw:(Colorectal Neoplasms)) OR (tw:(NeoplasiasColorrectales)) OR (tw:(NeoplasiasColorretais)) OR (tw:(Colorectal Cancer)))) AND (tw:((tw:(cetuximab)) OR (tw:(erbitux)) OR (tw:(panitumumab)) OR (tw:(vectibix)) OR (tw:(bevacizumab)) OR (tw:(avastin)))) 18

EMBASE 'colorectal tumor'/exp AND [embase]/lim OR (colorectal neoplasia AND [embase]/lim) OR (colorectal neoplasm AND [embase]/lim) OR (colorectal neoplasms AND [embase]/lim) OR (colorectal tumour AND [embase]/lim) OR (tumor, colorectal AND [embase]/lim) OR (tumour, colorectal AND [embase]/lim) AND ('cetuximab'/exp AND [embase]/lim OR (c\$225 AND [embase]/lim) OR (erbitux AND [embase]/lim) OR (imc\$225 AND [embase]/lim) OR (imc\$c225 AND [embase]/lim) OR (imcc\$225 AND [embase]/lim) OR (monoclonal antibody AND c\$225 AND [embase]/lim) OR ('panitumumab'/exp AND [embase]/lim) OR (abx AND egf AND [embase]/lim) OR (abx\$egf AND monoclonal AND antibody AND [embase]/lim) OR (monoclonal AND antibody AND abx AND egf AND [embase]/lim) OR (vectibex AND [embase]/lim) OR (vectibix AND [embase]/lim) OR ('bevacizumab'/exp AND [embase]/lim) OR (altuzan AND [embase]/lim) OR (avastin AND [embase]/lim) OR (nsc\$704865 AND [embase]/lim)) AND ('cohort analysis'/exp AND [embase]/lim OR ('longitudinal study'/exp AND [embase]/lim) OR ('prospective study'/exp AND [embase]/lim) OR ('follow up'/exp AND [embase]/lim) OR ('cohort\$' AND [embase]/lim)) 505

Figures

Figure 1E: Evolution number of Cancer litigation cases on bevacizumab, cetuximab and panitumumab/ year in Minas Gerais – Brazil, 2009-2016.



NB: BEVA= Bevacizumab; CETUX= Cetuximab; PANIT= Panitumumab. Data from the Núcleo de Atendimento à Judicialização da Saúde (NAJS) SES-MG, in June 2017

Figure 2E. Flowchart of the studies included

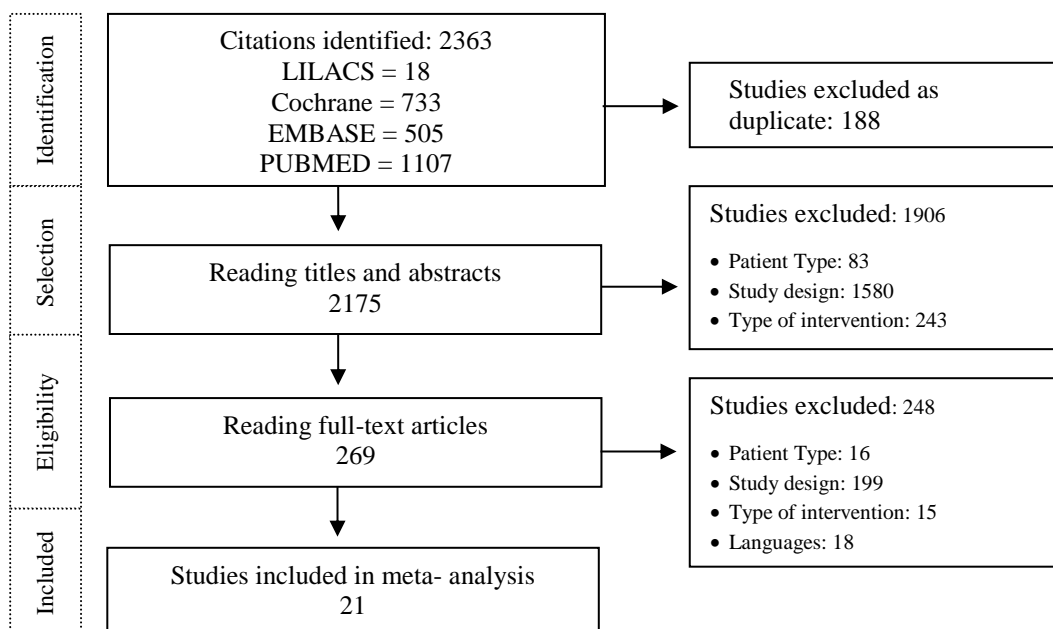
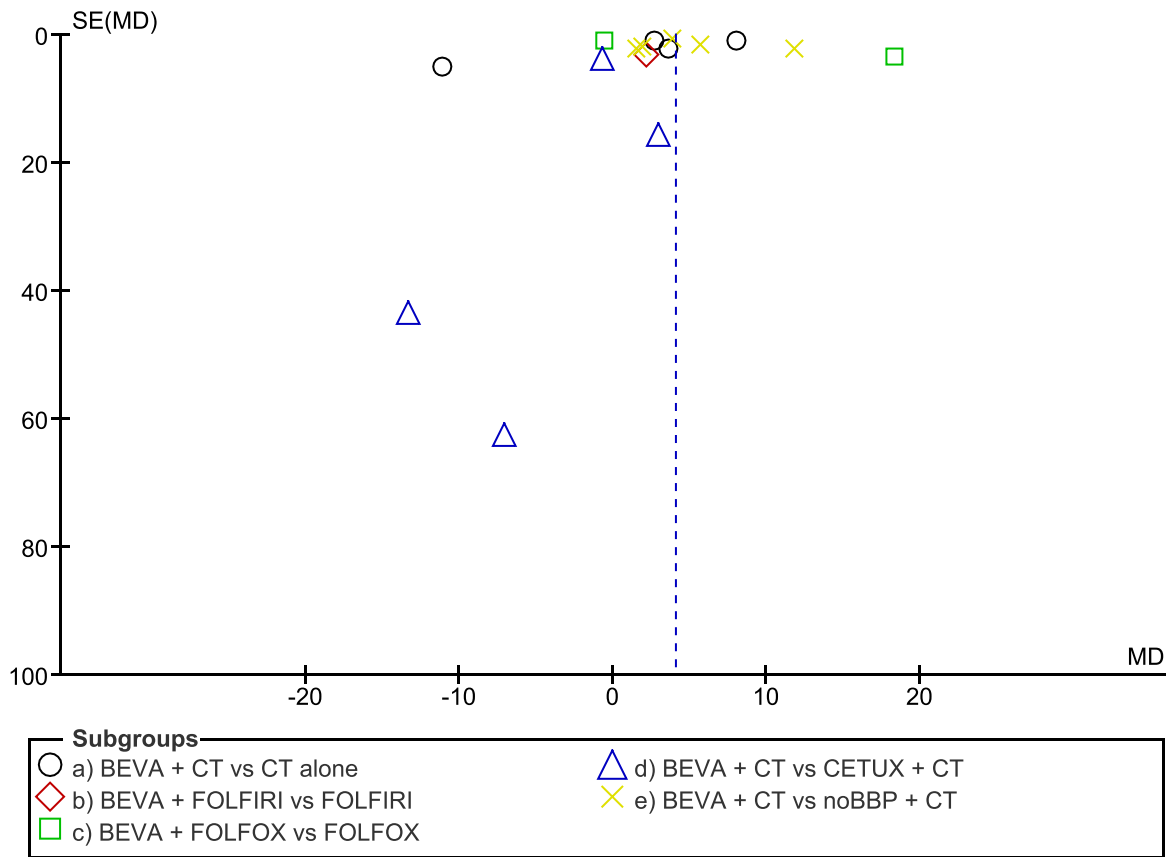
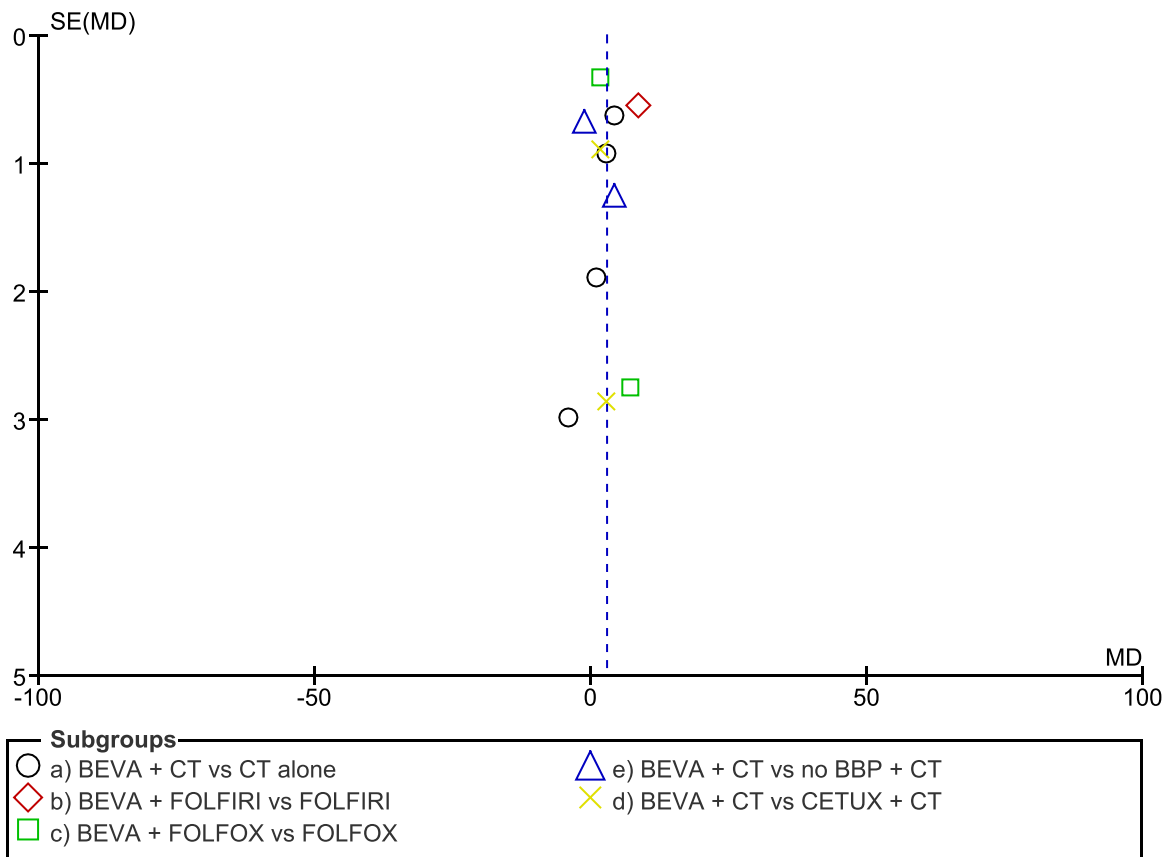


Figure 3E – Overall Survival Funnel Plot



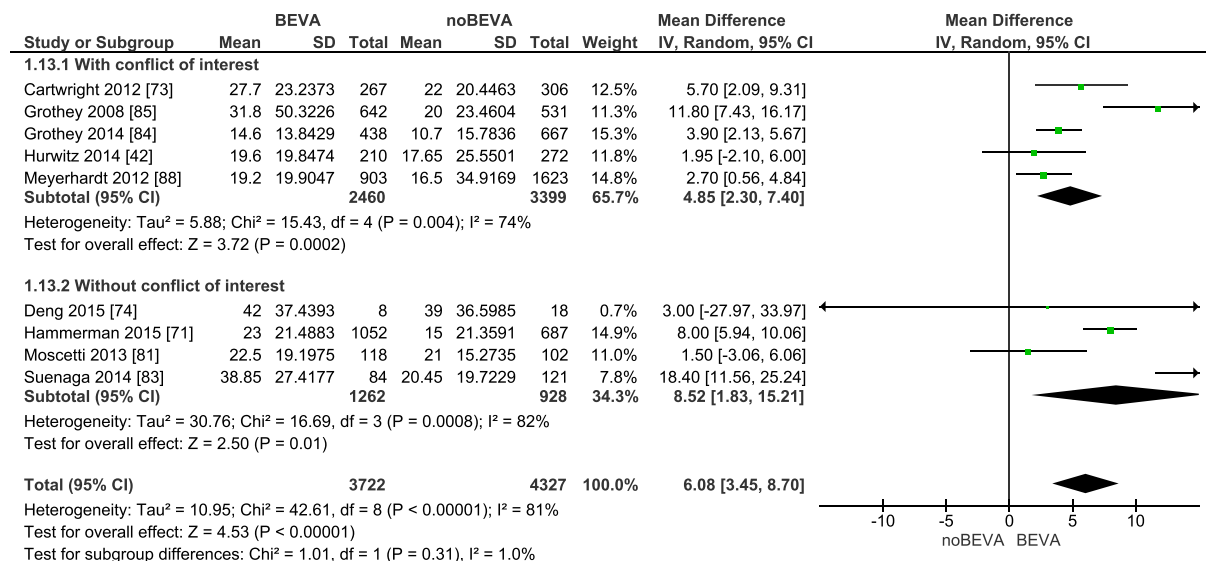
NB: BEVA= Bevacizumab; CT = Chemotherapy; CETUX = cetuximab; MD = Mean Difference; no BBP = no bevacizumab beyond progression.

Figure 4E – Progression Free Survival Funnel Plot



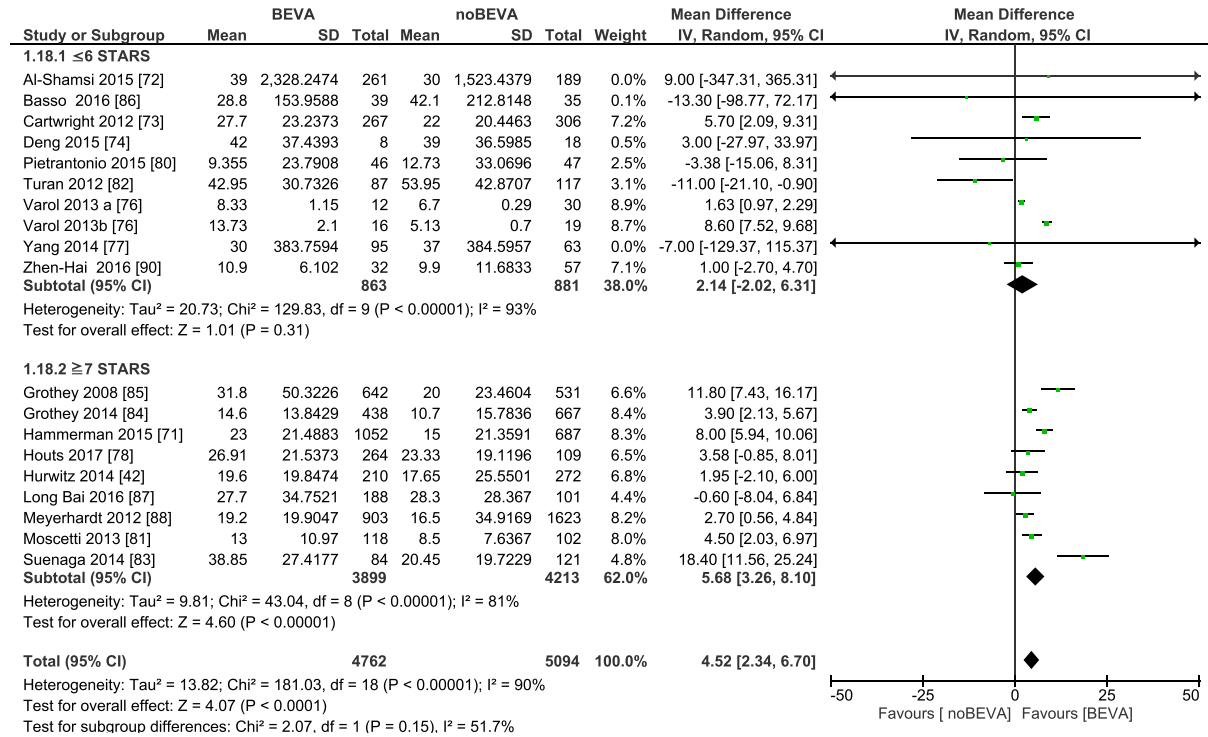
NB: BEVA= Bevacizumab; CT = Chemotherapy; CETUX = cetuximab; MD = Mean Difference; no BBP = no bevacizumab beyond progression.

Figure 5E – Conflict of Interest Forest Plot



BEVA= Bevacizumab; CI: confidence interval; I^2 - Heterogeneity; $I^2 > 50\%$ and p-value of the chi-square test < 0.10 indicate significant heterogeneity between the studies;; no BEVA = other therapeutic schemes that did not contain BEVA; SD = Standard Deviation.

Figure 6E – Quality of the studies-Newcastle-Ottawa scale Forest Plot



BEVA= Bevacizumab; CI: confidence interval; I^2 - Heterogeneity; $I^2 > 50\%$ and p-value of the chi-square test < 0.10 indicate significant heterogeneity between the studies;; no BEVA = other therapeutic schemes that did not contain BEVA; SD = Standard Deviation.