

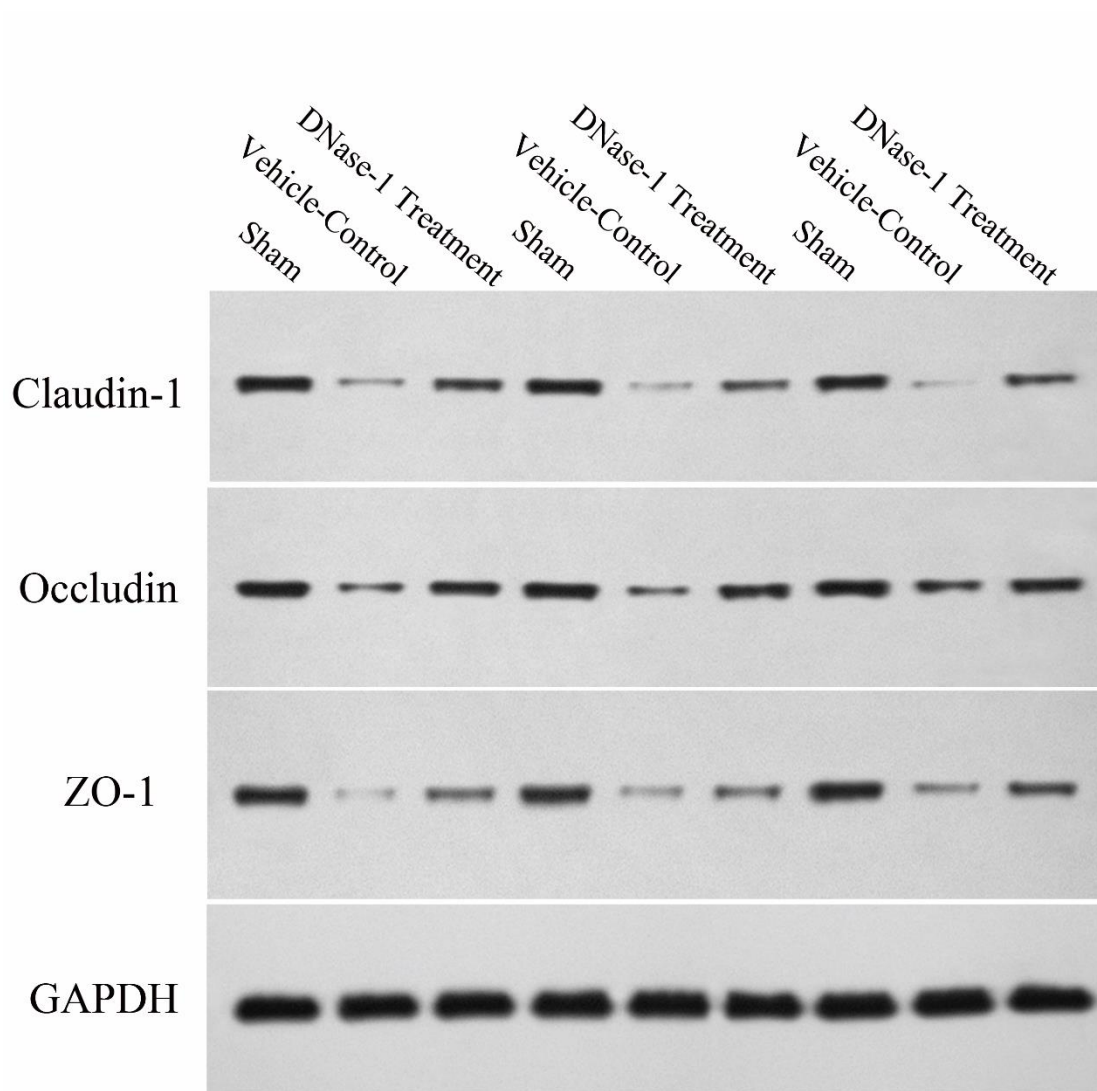
DNase-1 Treatment Exerts Protective Effects in a Rat Model of Intestinal Ischemia-Reperfusion Injury

Shikai Wang^{1,*}, Tian Xie^{1,*}, Shilong Sun¹, Kai Wang¹, Baochen Liu¹, Xingjiang Wu¹,
Weiwei Ding¹

¹Research Institute of General Surgery, Jinling Hospital, Nanjing University School of Medicine, Nanjing 210002, Jiangsu Province, P.R. China.

*These authors contributed equally to this work.

Correspondence and requests for materials should be addressed to W.D. (e-mail: dingwei_nju@hotmail.com)



Full-length blots of claudin-1, occluding and zo-1 between groups.