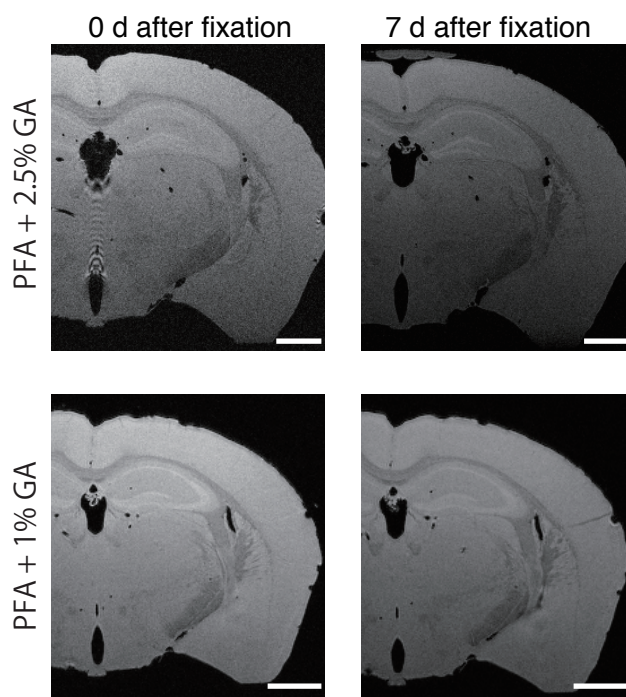


Isotropic 25-micron 3D neuroimaging using *ex vivo* microstructural manganese-enhanced MRI (MEMRI)

Chika Sato, Kazuhiko Sawada, David K. Wright, Tatsuya Higashi, Ichio Aoki

Supplementary Figures and Figure Legends



Supplementary Figure S1

Supplementary Figure S1. Longitudinal Observation of preserved Mn in *ex vivo* brain with different fixative solution. The T1-weighted images obtained through *ex vivo* Mn-enhanced MRI shortly after fixation (left column, as same as Figure 1C) and 7 days after fixation (right column) were shown. We used 4% PFA including 2.5% GA (top), or in 1% GA (bottom) as fixative solution. PFA: paraformaldehyde, GA: glutaraldehyde. Scale bar: 1 mm.