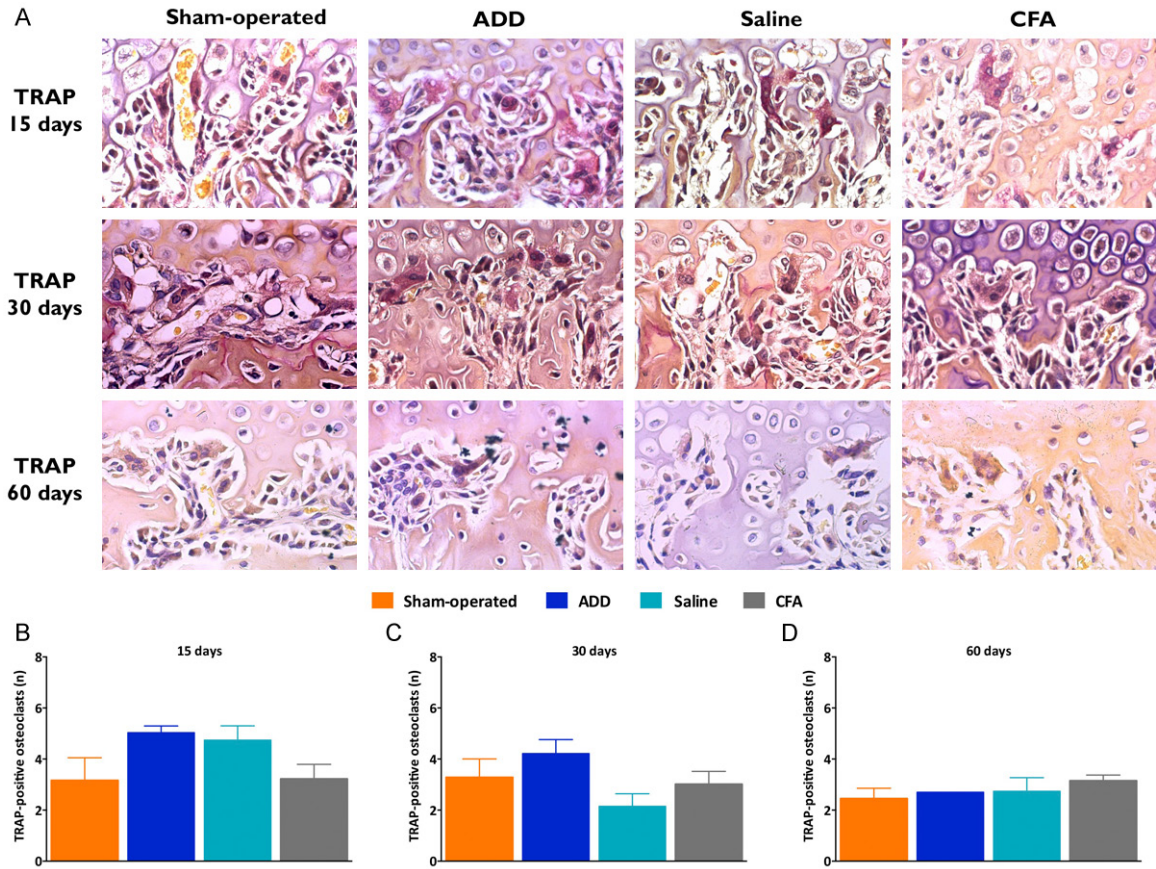


TMJ anterior disc displacement-induced rat OA model



Supplementary Figure 1. Histological evaluation of osteoclast activity. A. TRAP staining in the interface between the fibrocartilage and the subchondral region, under $\times 400$ magnification. Positive staining for osteoclasts was mainly located beneath the hypertrophic layer. B-D. A clear decrease in the number of osteoclasts is observed along the experimental times. At 15 days, the ADD and saline groups showed a slight increase in the number of TRAP-positive osteoclasts. No statistical differences were observed.