

Figure 1

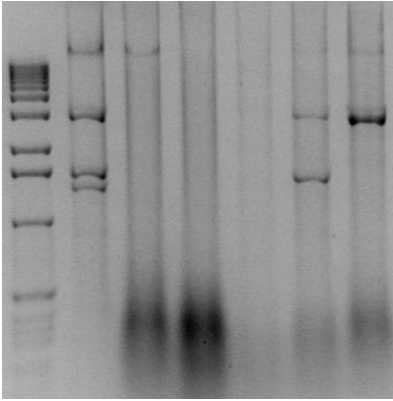


Figure 2

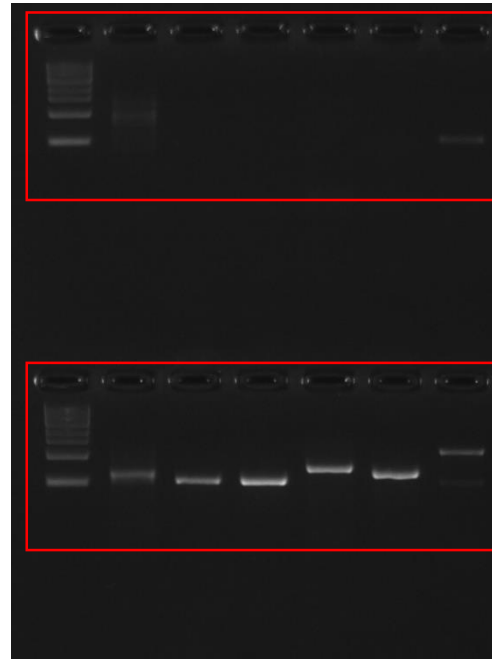
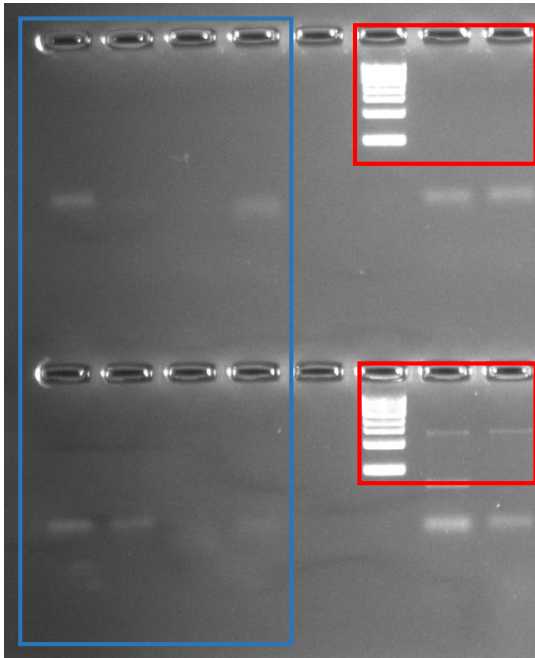


Figure 2c  
Lower panel

Figure 2c  
Higher panel

Supplementary Figure 3b



Lower panel

Negative control (no  
DNA) for Figure 2c and  
Supplementary figure 3b

Higher panel

Figure 2f source data

|        | Means   |       | s.d.    |       |
|--------|---------|-------|---------|-------|
|        | healthy | BCTIV | healthy | BCTIV |
| #1     | 1.13    | 6.86  | 0.73    | 0.89  |
| #2     | 1.51    | 4.41  | 0.67    | 0.21  |
| #4     | 2.01    | 13.32 | 0.24    | 0.07  |
| #5     | 1.16    | 2.86  | 0.80    | 2.10  |
| #7     | 1.12    | 3.77  | 0.60    | 0.51  |
| #33    | 2.03    | 4.30  | 0.11    | 0.23  |
| #56/59 | 1.01    | 4.85  | 0.36    | 0.46  |
| C1     | nd      | 14.20 | nd      | 0.31  |

# Figure 3

Southern blots probed with virus-specific (red) or minicircle-specific (yellow) probes

Figure 3a.  
Beta vulgaris

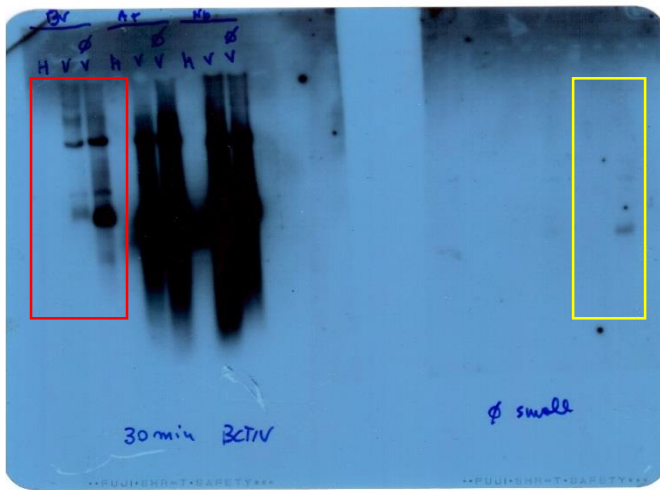


Figure 3b  
Arabidopsis

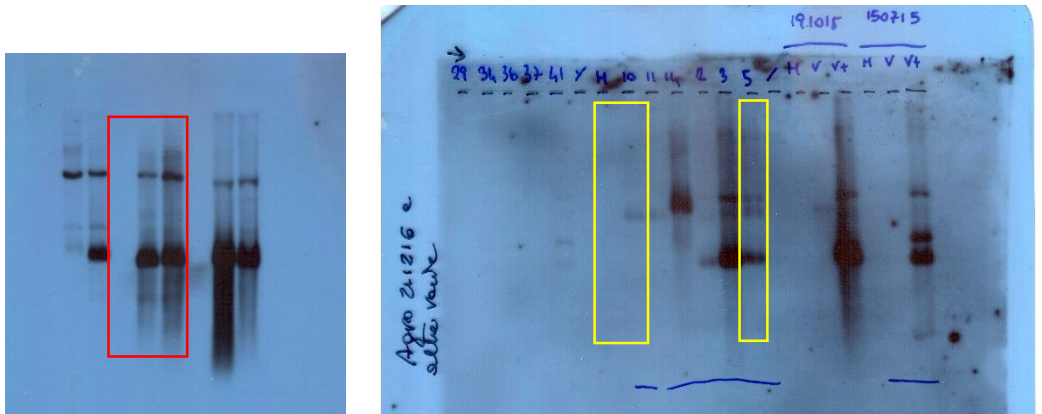


Figure 3c  
N. benthamiana

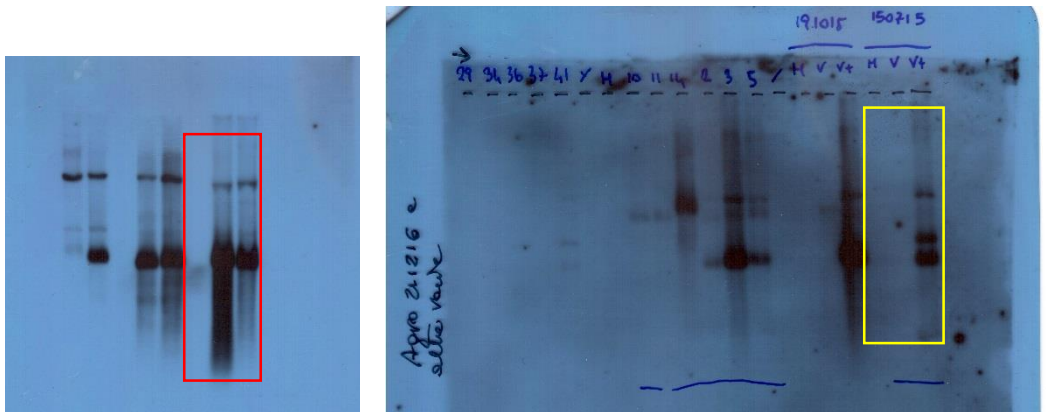
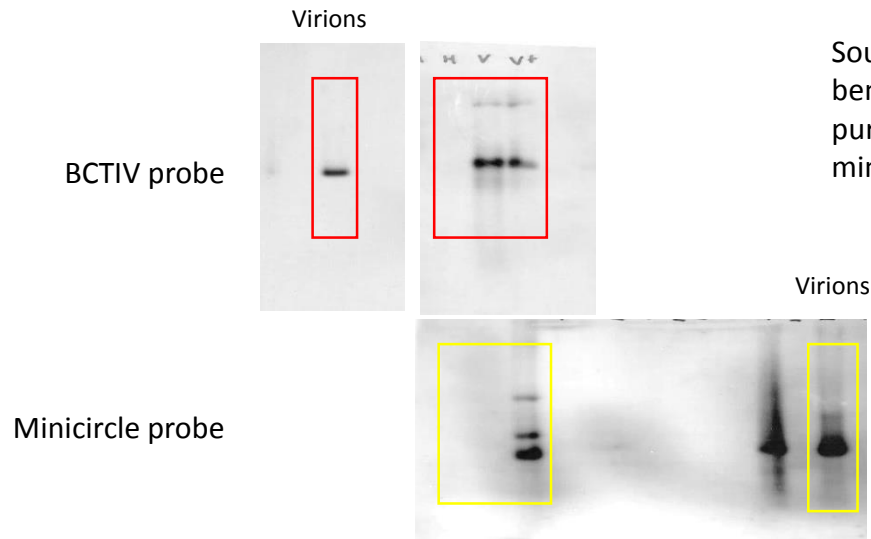


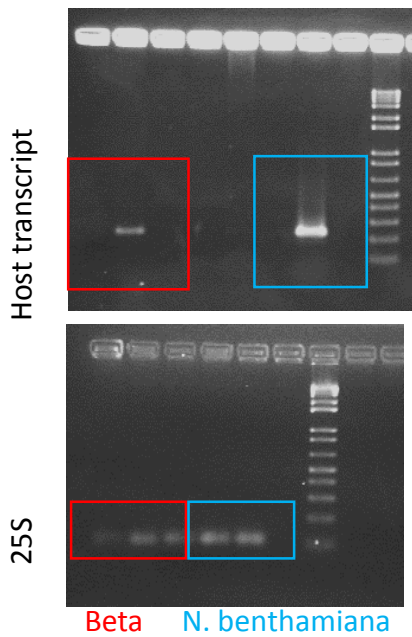
Figure 3d



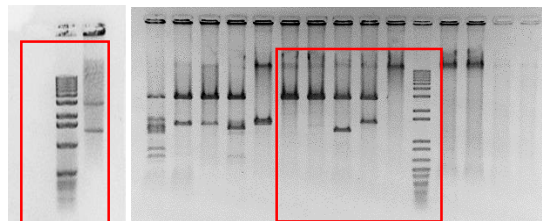
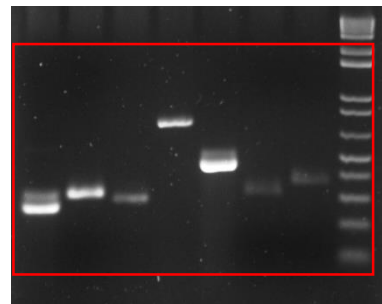
Southern blot: purified virions and *N. benthamiana* plants used for virion purification with virus-specific (red) or minicircle-specific (yellow) probes

Figure 3e

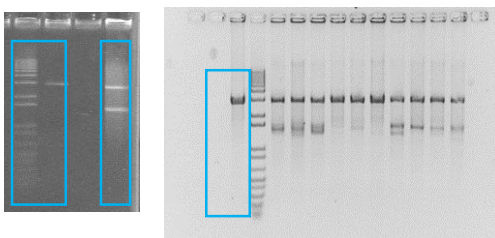
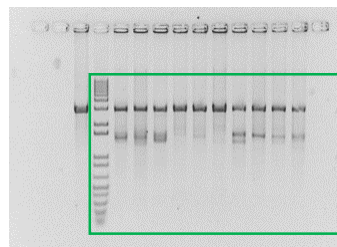
RT-PCR from beta and *N. benthamiana*



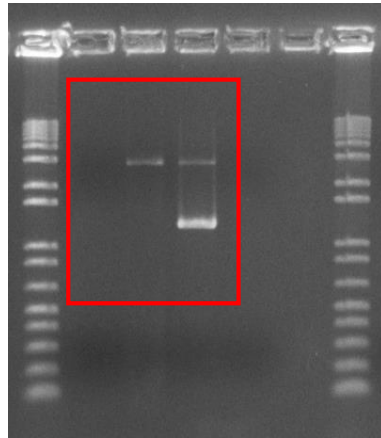
Supplementary Figure 1



*B. vulgaris*

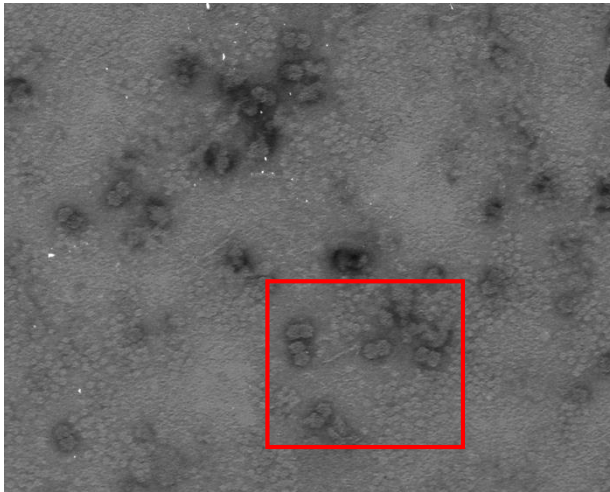


## Supplementary Figure 4



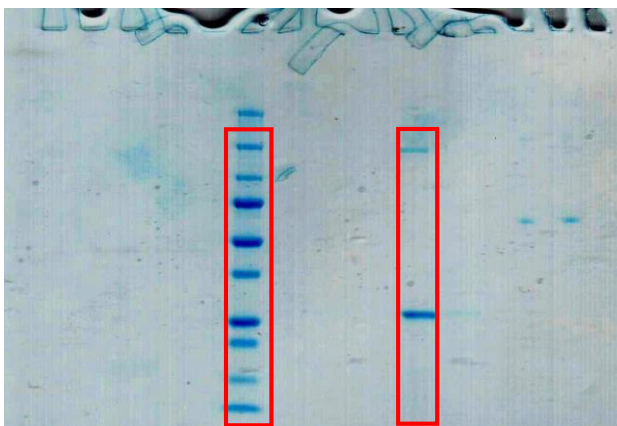
Panel 4a

PCR from plants inoculated with BCTIV and with BCTIV + minicircle



Panel 4b

EM purified virions



Panel 4c

SDS-PAGE of purified virions