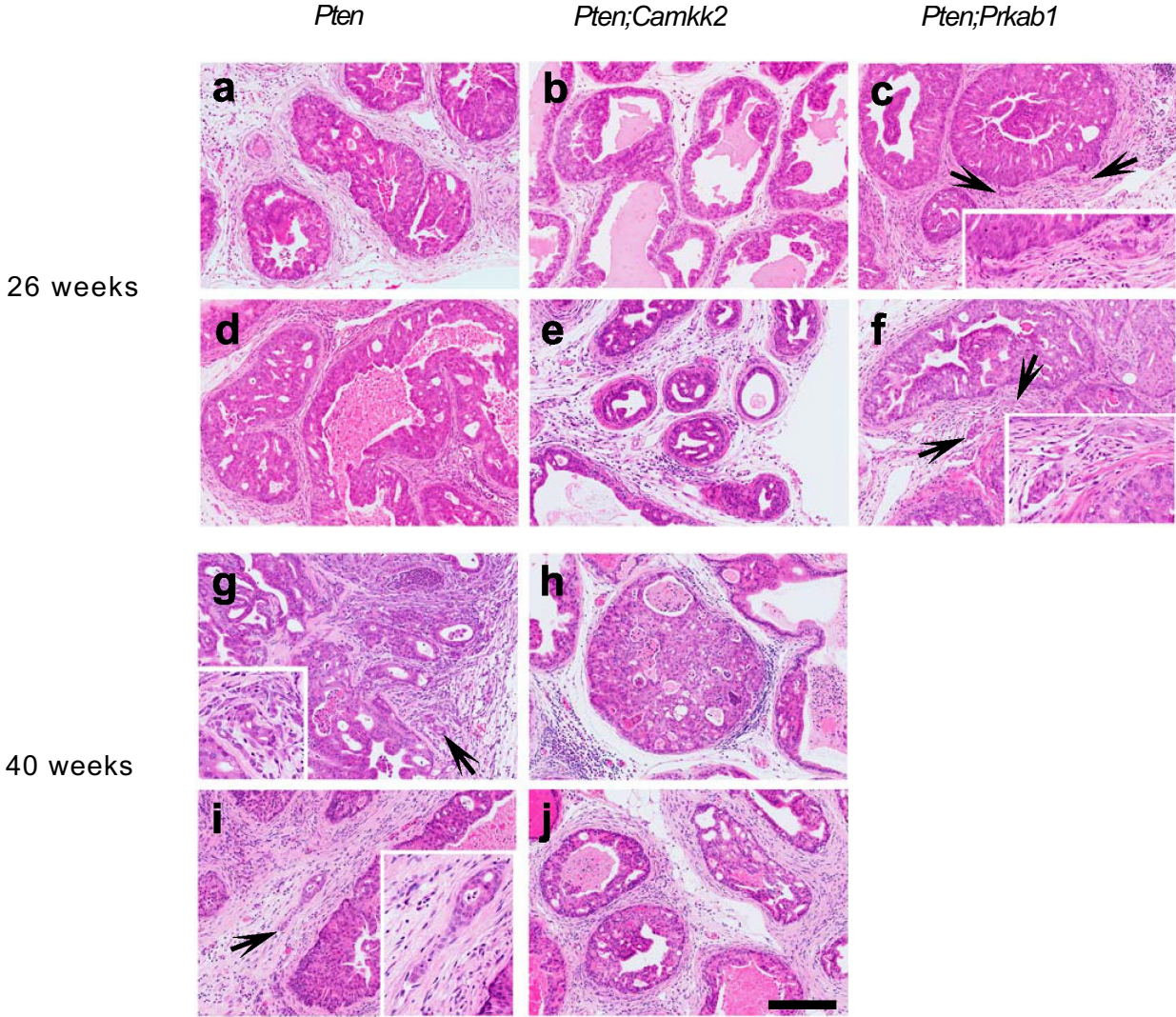


Supplementary Fig. S1A



Supplementary Fig. S1B



Supplementary Figure S1. (A) Representative images of mouse prostate for each genotype taken at 17 weeks of age. (B) Characterisation of neoplastic lesions of the mouse prostate. Duplicate representations of prostates collected from *Pten* (a, d, g and i), *Pten;Camkk2* (b, e, h and j) and *Pten;Prkab1* (c and f) mice at 6 (a-f) and 10 (g-j) months of age. PIN2/3 (b and e), PIN4 (a, d, h and j) and adenocarcinomas (c, f, g and i) are shown. Areas of stromal (c and g) and vascular (f and i) invasion by adenocarcinomas are shown by arrows and enlarged in insets. Hematoxylin and eosin staining. Scale bar: 100 μm in insets, and 200 μm in all other images.