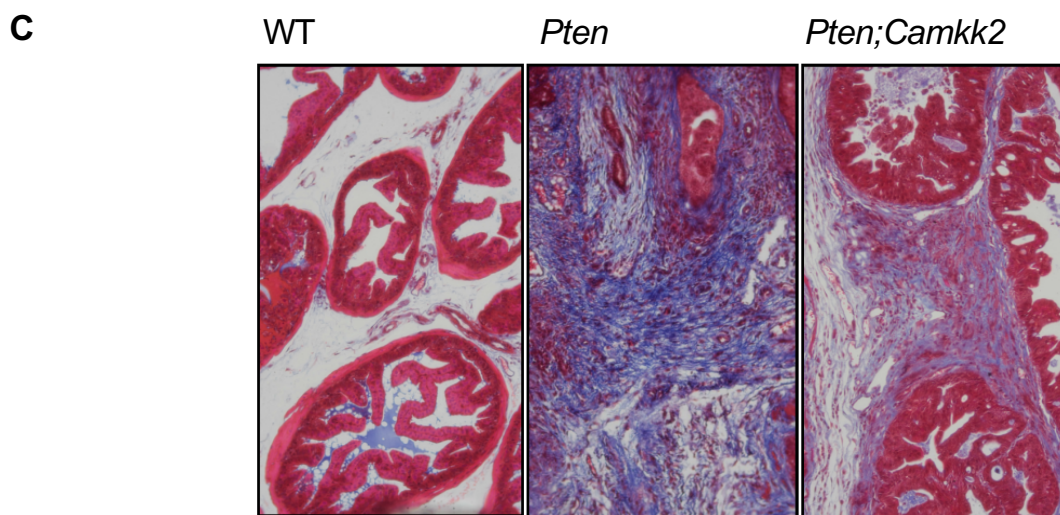
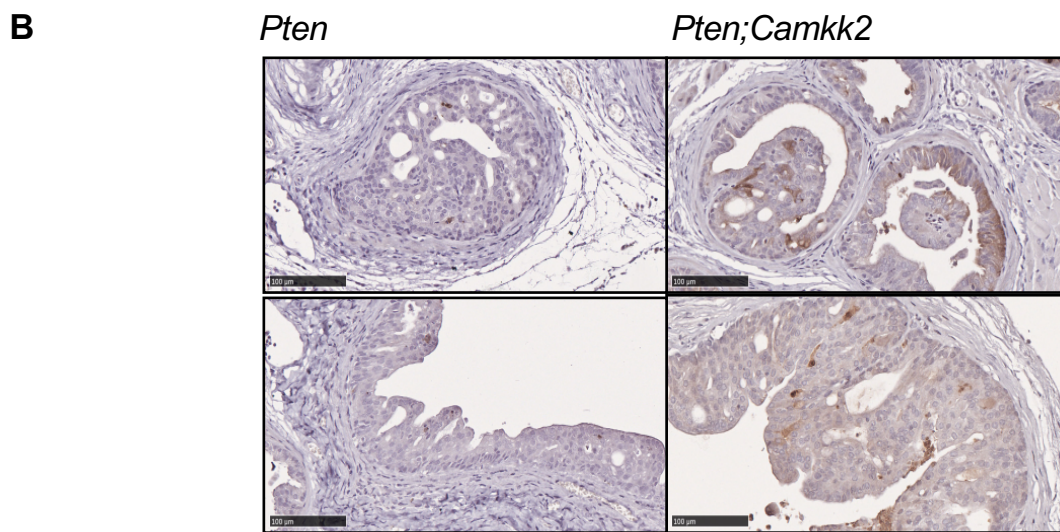
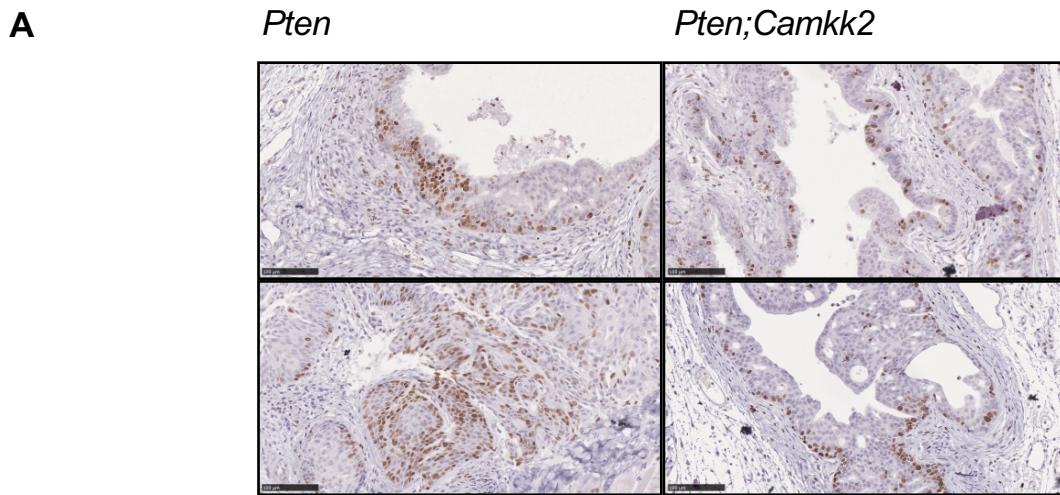


# Supplementary Fig. S2



**Supplementary Figure S2. Ki-67, cleaved-caspase 3 and Masson's trichrome staining of *Pten* and *Pten;Camkk2* prostate sections at 26 weeks.** (A) Examples of prostate tissue sections from *Pten* and *Pten;Camkk2* null mice stained for Ki-67; a marker of proliferation, are shown for each genotype. Scale bar: 100  $\mu$ m. Quantification of staining is shown in Figure 1F. (B) Prostate sections from *Pten* and *Pten;Camkk2* mice were immunohistochemically stained for cleaved-caspase 3; a marker of apoptosis. Representative images shown for each genotype. Scale bar: 100  $\mu$ m. (C) Masson's trichrome staining of wild-type (WT), *Pten* and *Pten;Camkk2* prostate sections. Representative images shown for each genotype.