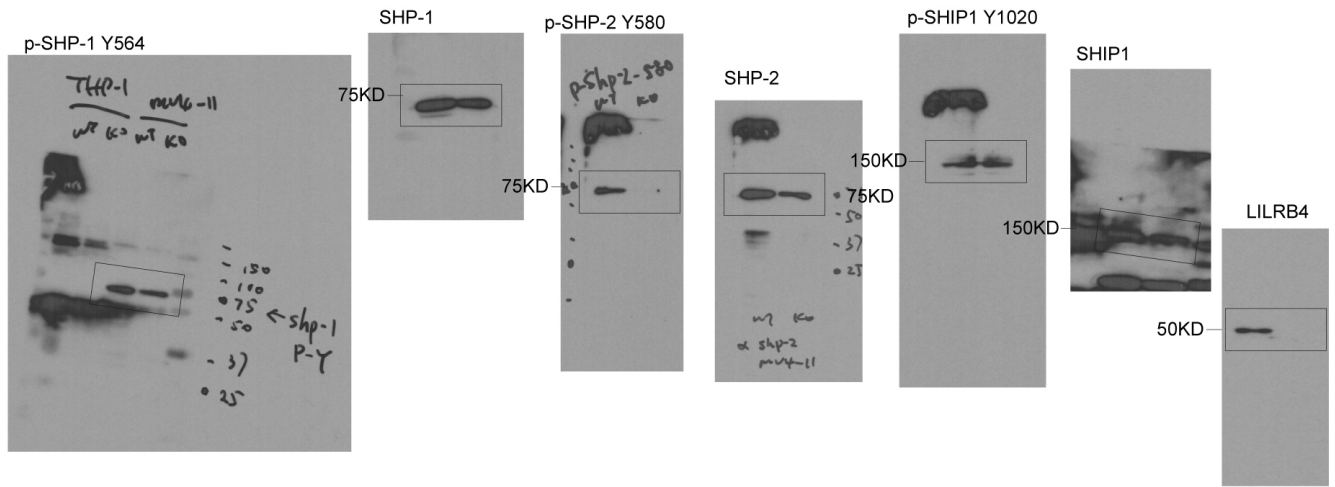
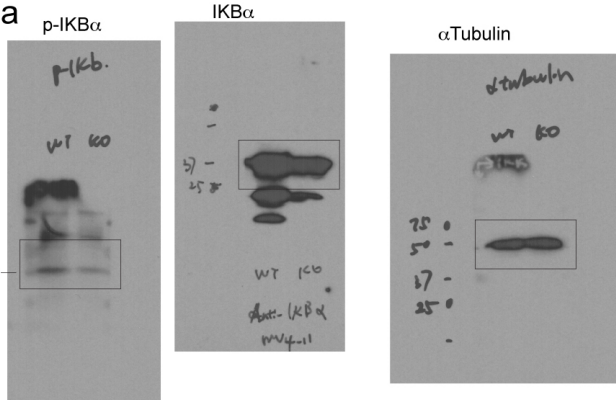


**Supplementary Figure 1.** Original uncropped images of western blots.

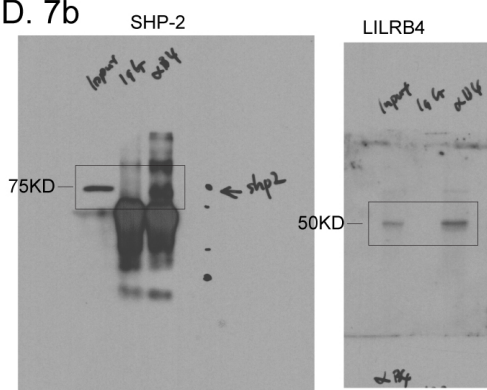
ED. 7a



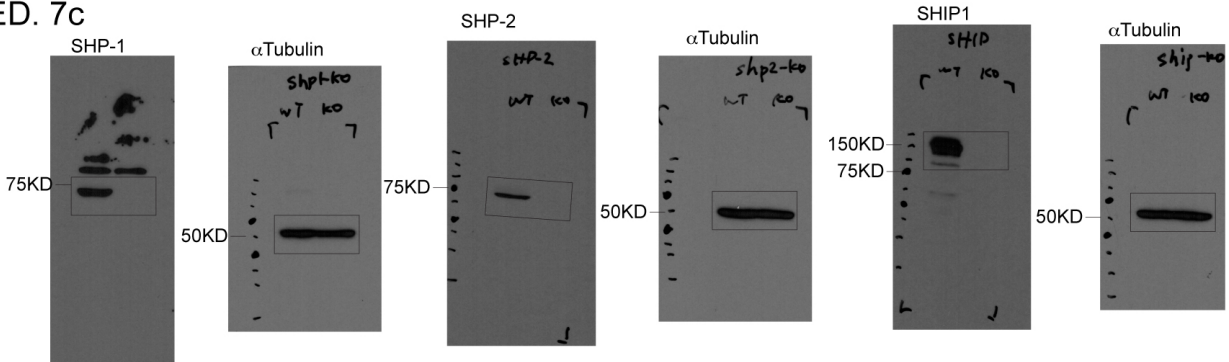
ED. 7a



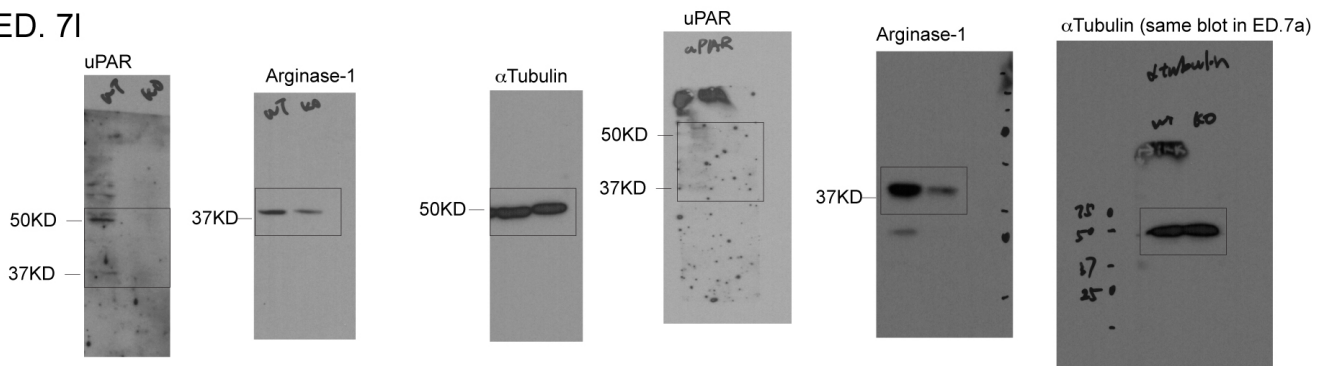
ED. 7b



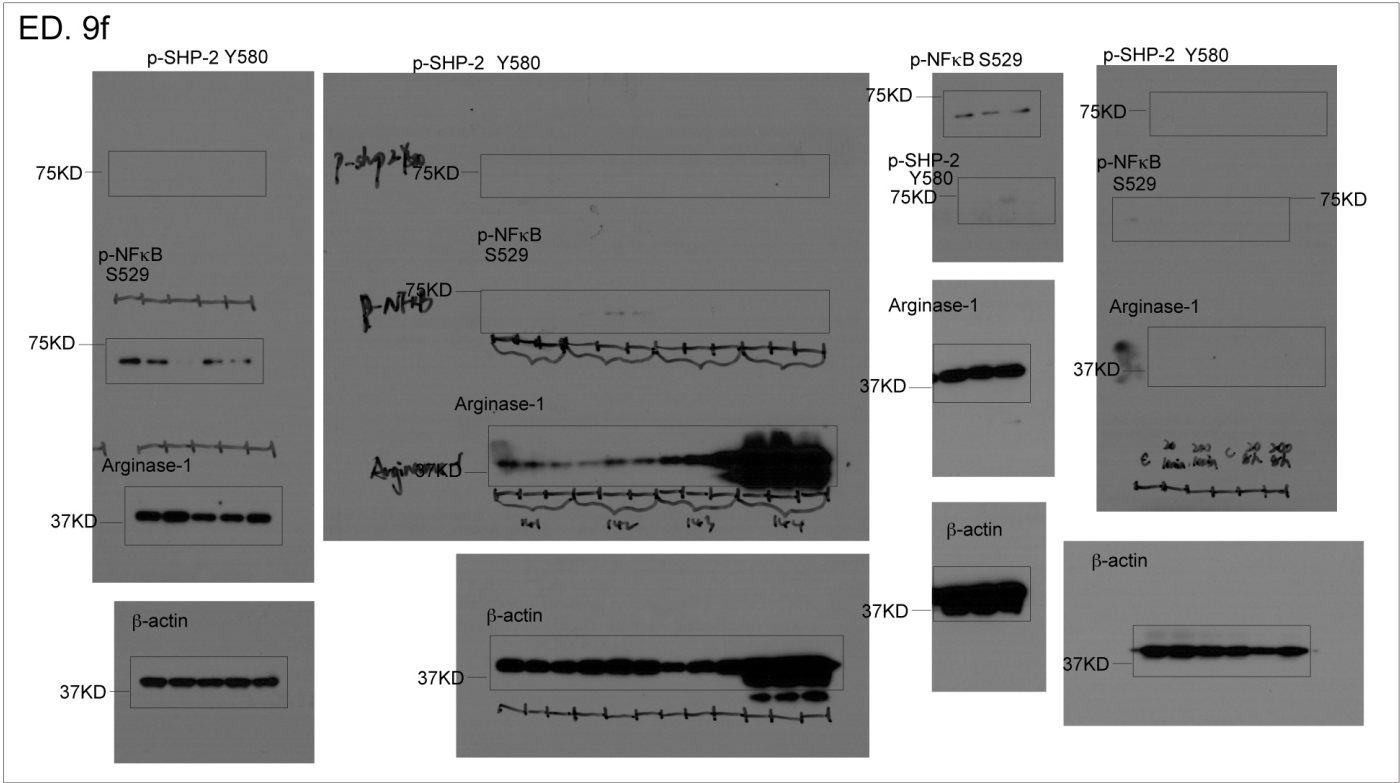
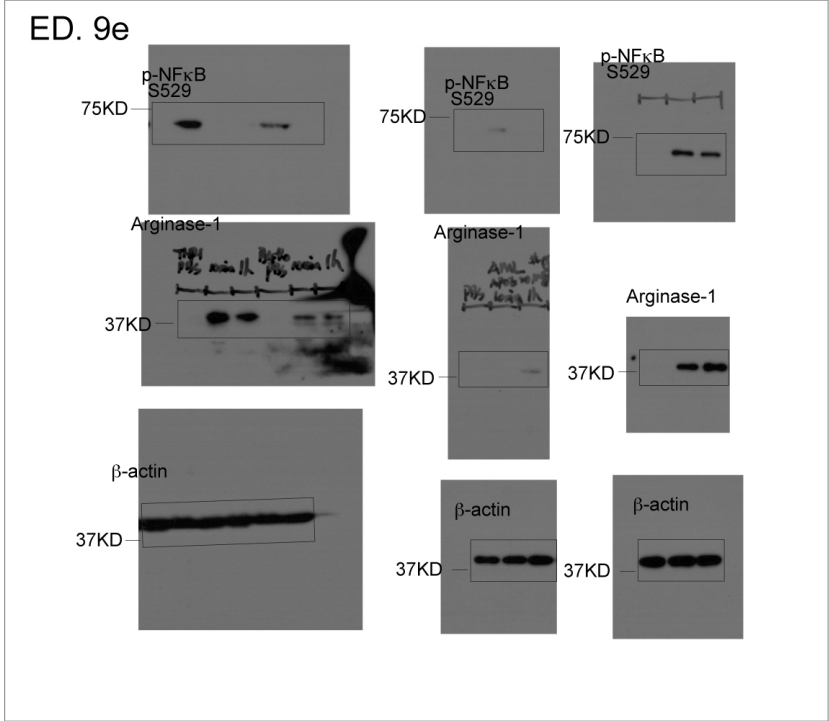
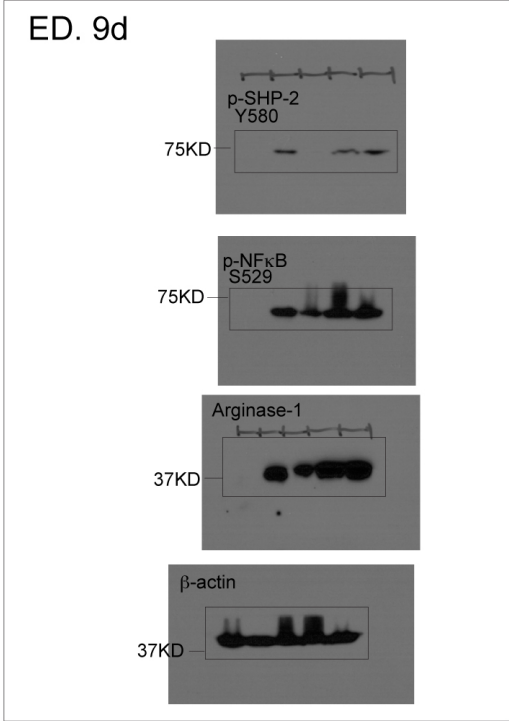
ED. 7c



ED. 7i



(continued) Supplementary Figure 1. Original uncropped images of western blots.



**(continued) Supplementary Figure 1. Original uncropped images of western blots.** Controls, αTubulin or β-actin, were run on the same gel as loading controls (αTubulin for p-IKβα in ED.7a; αTubulin in ED.7c; β-actin for p-NFκB in ED.9d and 9e; β-actin for p-SHP-2 in ED.9f), or on separate gels as sample processing controls.

**Supplementary Table 1. Leukemia characterization of 118 samples from 105 human AML patients in UTSW cohort. General patient information and immunophenotype of blast cells. BM, Bone marrow; PB, Peripheral blood.**

Sample_ID	Age (yrs)	Gender	Specimen	FAB subtype	Blast cells (%)	CD14	CD33	CD34	CD36	CD64	CD117	LILRB4
0001	48	Female	BM	M1	84	-	bright +	partial +	partial +	Partial dim +	variably +	-
0002	30	Female	BM	M1	22	-	bright +	partial +	sm sub +	-	+	-
0003	84	Male	PB	M1	90	-	partial +	+	-	predom -	partial +	-
0004	54	Male	BM	M1	92	predom-	partial +	variably +	sm subset +	-	sm sub+	-
0005	51	Female	PB	M1	65	-	bright +	-	-	-	dim +	-
0006	68	Male	PB	M1	45	-	bright +	-	partial +	-	-	-
0007	92	Female	PB	M1	80	-	dim +	bright +	-	-	+	-
0008	78	Male	BM	M1	80	-	variably +	+	-	-	+	-
0009	64	Female	BM	M1	83	-	partial +	+	-	partial dim +	+	-
0010	72	Female	BM	M2	17	-	variably +	+	-	-	+	-
0011	50	Male	BM	M2	15	-	+	partial +	-	-	+	-
0012	78	Male	BM	M2	10	-	+	+	predom -	predom -	+	-
0013	44	Female	BM	M2	21	-	variably +	+	-	-	+	-
0014	53	Female	BM	M2	58	-	variably +	+	-	-	partial +	-
0015	56	Male	BM	M2	24	-	bright +	variably +	-	few +	+	-
0016	78	Male	BM	M2	73	-	variably +	variably +	-	-	+	-
0017	78	Male	BM	M2	15	-	partial +	+	predom -	subset +	+	-
0018	74	Male	BM	M2	8	-	bright +	partial +	-	partial dim +	+	-
0019	78	Male	BM	M2	57	-	+	bright +	predom -	-	+	-

0020	86	Male	BM	M2	68	-	partial +	+	sm sub +	-	+	-
0021	6	Female	BM	M2	24	-	+	bright +	-	-	+	-
0022	60	Female	BM	M2	44	-	partial +	variably +	-	-	predom +	-
0023	72	Male	BM	M2	18	-	variably +	variably +	predom -	few +	+	-
0024	41	Male	BM	M2	74	-	variably +	partial +	few +	predom -	variably +	-
0025	67	Female	BM	M2	18	-	variably +	predom +	subset +	predom -	+	-
0026	57	Male	PB	M2	52	-	bright +	-	-	partial +	partial +	-
0027	74	Male	BM	M2	56	-	partial +	+	subset +	predom -	partial +	-
0028	27	Male	BM	M2	45	-	+	+	predom -	partial dim +	+	-
0029	53	Female	PB	M2	34	-	part dim +	bright +	-	-	variably +	-
0030	85	Male	BM	M2	8	-	+	+	predom -	-	predom +	-
0031	59	Male	PB	M2	14	-	bright +	partial +	partial dim +	-	+	-
0032	35	Male	PB	M2	4	-	bright +	+	-	-	variably +	-
0033	53	Female	PB	M2	28	-	+	predom +	predom -	-	variably +	-
0034	46	Male	PB	M2	28	-	+	+	partial +	-	+	-
0035	42	Male	PB	M2	31	-	partial +	+	-	-	bright +	-
0036	56	Male	BM	M2	10	-	+	variably +	-	-	+	-
0037	61	Male	BM	M2	62	-	bright +	predom -	-	few +	+	-
0038	54	Male	BM	M2	45	-	bright +	partial +	predom -	predom -	variably +	-
0039	65	Male	BM	M2	29	-	variably +	predom +	predom -	-	variably +	-
0040	47	Female	BM	M2	48	-	+	predom -	partial +	-	partial +	-
0041	75	Male	BM	M2	42	-	+	partial +	partial +	predom +	partial +	-
0042	84	Female	PB	M2	51	part+	+	+	-	predom -	partial +	-

0043	81	Female	BM	M2	31	-	+	partial +	partial +	few dim +	+	-
0044	43	Male	BM	M3	83	-	bright +	predom -	-	+	partial +	-
0045	24	Female	BM	M3	85	-	bright +	predom -	-	+	+	-
0046	60	Male	BM	M3	89	-	bright +	-	-	dim +	+	-
0047	25	Female	PB	M3	93	-	bright +	partial +	dim +	partial +	partial +	-
0048	39	Male	PB	M3	55	-	bright +	-	-	-	variably +	-
0049	26	Male	BM	M3	75	-	bright +	predom -	-	partial dim +	+	-
0050	48	Male	BM	M3	82	-	bright +	predom -	-	dim +	+	-
0051	26	Male	BM	M3	78	-	bright +	-	-	partial +	+	-
0052	16	Male	BM	M3	80	-	bright +	predom -	-	+	-	-
0053	34	Male	BM	M3	93	-	bright +	-	-	partial +	+	-
0054	72	Male	PB	M4	26 (myeloblast)	-	+	bright +	-	predom -	+	-
					40 (monoblast)	partial +	+	-	variable +	+	predom -	dim +
0055	30	Male	BM	M4	64 (myeloblast)	-	variably +	variably +	-	partial +	+	sm sub +
					19 (monoblast)	+	bright +	-	+	+	-	+
0056	85	Male	PB	M4	6 (myeloblast)	-	bright +	-	-	dim +	+	sm sub +
					22 (monoblast)	+	bright +	-	variably +	+		+
0057	59	Male	BM	M4	33 (myeloblast)	-	bright +	bright +	-	partial +	variably +	-
					30 (monoblast)	+	bright +	partial +	+	+	-	partial +
0058	37	Male	PB	M4	10 (myeloblast)	-	+	bright +	-	partial dim +	+	-
					46 (monoblast)	+	+	-	+	+	-	+

0059	17	Male	PB	M4	11 (myeloblast)	-	+	predom +	-	Partial dim +	variably +	-
					45 (monoblast)	variably +	+	-	+	+	-	+
0060	57	Female	BM	M4	30 (myeloblast)	-	+	-	predom -	predom dim +	part dim +	-
					37 (monoblast)	partial +	+	-	variably +	variably +	-	+
0061	74	Male	BM	M4	27 (myeloblast)	predom -	variably +	+	partial +	partial +	+	part dim +
					30 (monoblast)	variably +	bright +	sm subset +	variably +	+	-	partial +
0062	51	Female	BM	M4	16 (myeloblast)	-	+	predom +	-	partial dim +	+	-
					25 (monoblast)	+	+	-	+	+	-	+
0063	61	Male	BM	M4	4 (myeloblast)	-	+	+	-	-	+	-
					41 (monoblast)	partial +	+	-	+	+	-	+
0064	29	Female	BM	M4	15 (myeloblast)	-	+	+	few +	few +	+	-
					54 (monoblast)	variably +	bright +	-	variably +	+		dim +
0065	55	Male	BM	M4	28 (myeloblast)	-	bright +	predom -	predom +	predom +	subset +	partial +
					40 (monoblast)	+	bright +	predom -	predom +	predom +	subset +	+
0066	68	Female	PB	M4	16 (myeloblast)	-	+	bright +	partial +	few +	+	-
					29 (monoblast)	partial +	+	predom -	+	+	-	+
0067	58	Female	BM	M4	46 (monoblast)	partial +	bright +	-	+	bright +	variably +	+
0068	68	Female	BM	M4	12 (myeloblast)	-	+	+	partial +	few +	+	-
					65 (monoblast)	partial +	+	predom -	+	+	-	+

0069	47	Male	BM	M4	14 (myeloblast)	-	+	-	-	-	+	-
					61 (monoblast)	small sub +	bright +	-	variably +	+	-	+
0070	14	Female	BM	M4	14 (myeloblast)	-	variably +	-	-	-	variably +	-
					28 (monoblast)	partial +	variably +	-	variably +	+	-	+
0071	66	Female	PB	M4	4 (myeloblast)	-	+	-	-	partial dim +	+	-
					40 (monoblast)	partial +	+	-	+	+	-	+
0072	66	Female	BM	M4	7 (myeloblast)	-	variably +	-	-	partial dim +	+	-
					42 (monoblast)	partial +	bright +	-	+	+	-	+
0073	22	Female	PB	M4	70 (myeloblast)	-	+	-	-	-	+	-
					27 (monoblast)	variably +	bright +	-	variably +	+	-	+
0074	56	Female	BM	M4	1 (myeloblast)	-	+	+	-	partial +	+	-
					50 (monoblast)	predom +	bright +	-	+	+	-	+
0075	91	Female	PB	M4	59 (myeloblast)	+	+	-	dim +	+	-	partial +
					12 (monoblast)	predom +	bright +	-	dim +	+	-	+
0076	74	Male	BM	M4	20 (myeloblast)	few +	variably +	variably +	-	partial +	variably +	partial +
					30 (monoblast)	partial +	bright +	-	dim +	+	-	partial +
0077	13	Female	PB	M4	24 (myeloblast)	-	variably +	partial +	-	partial +	+	-
					54 (monoblast)	partial +	variably +	-	+	dim +	-	partial +
0078	57	Female	BM	M4	35 (myeloblast)	-	+	-	-	dim +	variably +	-



					27 (monoblast)	partial +	+	-	partial +	+	-	+
0079	7 mos	Female	PB	M4	35 (myeloblast)	variably +	bright +	-	+	variably +	-	-
					40 (monoblast)	-	bright +	-	-	variably +	-	-
0080	13	Female	BM	M4	3 (myeloblast)	-	+	+	sm subset +	-	part dim +	-
					36 (monoblast)	partial +	variably +	-	partial +	+	-	partial +
0081	61	Male	BM	M4	10 (myeloblast)	-	+	pred +	-	-	+	-
					67 (monoblast)	partial +	variably +	-	variably +	partial +	-	+
0082	62	Female	BM	M4	7 (myeloblast)	-	+	+	-	predom -	predom +	-
					16 (monoblast)	partial +	bright +	-	partial +	+	-	+
0083	59	Male	PB	M4	9 (myeloblast)	-	bright +	+	-	partial +	variably +	-
					10 (monoblast)	+	bright +	-	-	+	-	+
0084	56	Female	BM	M4	3 (myeloblast)	-	+	+	-	partial +	+	-
					9 (monoblast)	partial +	bright +	-	partial +	+	predom -	+
0085	71	Male	BM	M4	3 (myeloblast)	-	variably +	+	predom -	partial +	variably +	-
					42 (monoblast)	+	+	-	partial +	+	partial +	+
0086	56	Female	BM	M4	3 (myeloblast)	-	+	+	-	partial +	+	-
					50 (monoblast)	partial +	bright +	-	partial +	variably +	partial +	+
0087	68	Male	BM	M4	2 (myeloblast)	-	variably +	+	-	partial +	+	-
					27 (monoblast)	predom +	+	-	+	partial +	-	+

0088	16	Male	PB	M5a	1 (myeloblast)	-	predom +	+	-	partial +	+	-
					85 (monoblast)	variably +	bright +	-	variably +	+	-	+
0089	16	Male	BM	M5a	1 (myeloblast)	-	predom +	+	-	partial +	+	-
					88 (monoblast)	+	bright +	-	variably +	+	-	+
0090	72	Male	BM	M5a	82	-	bright +	predom -	+	+	partial +	+
0091	35	Male	BM	M5a	60	-	bright +	predom -	partial +	+	partial +	+
0092	69	Female	BM	M5a	27	-	bright +	-	-	bright +	partial +	+
0093	17	Male	BM	M5a	96	predom -	variably +	predom -	part dim +	bright +	+	+
0094	76	Male	BM	M5a	10 (myeloblast)	-	+	+	-	few +	+	-
					74 (monoblast)	partial +	+	partial +	partial +	predom +	partial +	+
0095	63	Female	BM	M5a	1 (myeloblast)	-	dim +	partial +	-	dim +	+	-
					58 (monoblast)	pred -	bright +	-	partial +	+	+	+
0096	61	Female	BM	M5a	10	-	-	-	sl dim +	+	+	+
0097	9 mos	Female	PB	M5a	82	partial +	bright +	predom -	partial +	variably +	predom -	part dim +
0098	68	Male	BM	M5b	4 (myeloblast)	-	variably +	-	-	-	+	-
					61 (monoblast)	partial +	bright +	-	variable +	+	-	+
0099	82	Female	PB	M5b	2 (myeloblast)	-	+	-	-	partial +	+	-
					74 (monoblast)	+	bright +	-	+	+	-	dim +
0100	58	Female	PB	M5b	55	partial +	variably +	predom -	+	partial +	predom -	+
0101	62	Male	BM	M5b	2 (myeloblast)	-	partial +	variably +	-	partial +	+	-
					83 (monoblast)	partial +	variably +	-	partial +	+	pred -	+

0102	62	Male	LN	M5b	2 (myeloblast)	-	partial +	variably +	-	partial +	+	-
					47 (monoblast)	partial +	bright +	predom -	partial +	variably +	pred -	+
0103	51	Female	BM	M5b	3 (myeloblast)	-	variably +	+	-	-	+	-
					77 (monoblast)	variably +	+	-	-	+	partial +	+
0104	13	Male	BM	M5b	84	sm sub +	+	-	-	+	predom -	+
0105	7 mos	Female	BM	M5b	46	predom -	bright +	-	partial +	+	predom -	+
0106	69	Female	PB	M5b	1 (myeloblast)	partial +	bright +	+	subset +	variably +	+	-
					70 (monoblast)	partial +	bright +	pred -	subset +	variably +	sm sub +	dim +
0107	64	Male	BM	M5b	86	partial +	partial +	predom -	subset +	partial +	partial +	+
0108	14	Male	BM	M5b	94	partial +	+	-	-	bright +	-	partial +
0109	64	Male	BM	M5b	23	partial +	+	predom -	partial +	partial +	partial +	+
0110	61	Male	BM	M5b	1 (myeloblast)	predom -	partial +	variably +	sm sub +	-	sm subset +	dim +
					20 (monoblast)	predom -	partial +	variably +	sm subset +	-	sm subset +	dim +
0111	67	Female	PB	M5b	48	predom +	+	-	variably +	+	predom -	+
0112	76	Male	BM	M5b	2 (myeloblast)	predom -	partial +	bright +	-	predom -	+	-
					57 (monoblast)	+	bright +	partial dim +	+	bright +	-	+
0113	52	Female	BM	M6	8	-	bright +	partial +	-	-	+	-
0114	32	Female	BM	M6a	22	-	bright +	-	-	-	+	-
0115	48	Female	BM	M7	35	predom+	variably +	+	partial +	-	variably +	-
0116	17	Male	BM	AUL	56	-	+	bright +	-	-	-	-
0117	1 day	Male	PB	TAM	25	-	sm sub +	variably +	partial +	-	+	-

0118	1 mos	Female	PB	TAM	10	-	+	partial +	predom +	-	variably +	-
------	-------	--------	----	-----	----	---	---	-----------	----------	---	---------------	---

**Supplementary Table 2. Predicted critical amino acids of LILRB4 mediating APOE-LILRB4 interaction.** The role of mutated residues of LILRB4 in the possible APOE binding interface based on the known structures of LILRB4 and APOE. Based on the PDB structure of LILRB4 (PDBID: 3P2T) and APOE3 (PDBID: 2L7B), we identified indicated residues in four possible binding interfaces for mutagenesis study and generated a series of mutant LILRB4 reporter cells as shown in Fig. 3h.

Pose #5		Pose #115		Pose #51		Pose #155	
Residue (LILRB4)	Interaction Energy (kcal/mol)	Residue (LILRB4)	Interaction Energy (kcal/mol)	Residue (LILRB4)	Interaction Energy (kcal/mol)	Residue (LILRB4)	Interaction Energy (kcal/mol)
PHE201 (F)	-12.361279	TRP32 (W)	-10.162224	GLU90 (E)	-8.502012	LEU165 (L)	-9.812494
GLU64 (E)	-9.627243	GLU114 (E)	-6.124348	PHE201 (F)	-8.028892	ARG159 (R)	-8.752884
GLU63 (E)	-8.199759	THR30 (T)	-5.663048	TYR121 (Y)	-7.258127	ASP111 (D)	-8.496945
ARG97 (R)	-7.526236	GLN50 (Q)	-4.54658	GLU63 (E)	-7.189283	HIS162 (H)	-8.100805
PRO66 (P)	-6.648518	PRO112 (P)	-4.35171	GLU64 (E)	-6.94281	TRP32 (W)	-6.589325
TRP106 (W)	-4.482213	LEU165 (L)	-4.31777	ARG147 (R)	-6.633883	ARG168 (R)	-5.058758
GLN174 (Q)	-4.325576	PRO184 (P)	-3.930789	PRO66 (P)	-5.140189	LEU167 (L)	-4.187927
ARG95 (R)	-4.155138	LEU164 (L)	-3.905388	TRP41 (W)	-4.799497	ARG95 (R)	-4.11992
SER65 (S)	-3.705189	ARG168 (R)	-3.671397	ASP91 (D)	-4.351736	CYS166 (C)	-3.41541
PRO68 (P)	-3.454256	LEU113 (L)	-3.377484	SER148 (S)	-3.6486	GLU114 (E)	-3.271711
GLY172 (G)	-2.956375	HIS162 (H)	-3.349706	SER65 (S)	-3.562618	GLU34 (E)	-3.268257
ALA67 (A)	-2.919467	SER183 (S)	-3.268351	SER202 (S)	-2.962636	PRO112 (P)	-3.056938
GLY200 (G)	-2.754843	VAL188 (V)	-3.103813	ARG95 (R)	-2.717827	GLU170 (E)	-2.692569
HIS199 (H)	-2.747746	THR185 (T)	-2.416582	LEU205 (L)	-2.62092	GLN50 (E)	-2.506593
ALA173 (A)	-2.562305			GLY119 (G)	-2.582134	LYS28 (K)	-2.487442
LYS62 (K)	-2.133966			SER122 (S)	-2.387931	ALA161 (A)	-2.385419
GLU170 (E)	-2.114094			PRO149 (P)	-2.126853	LYS157 (K)	-2.32742
PRO109 (P)	-2.044897					PRO35 (P)	-2.219545
						THR30 (T)	-2.148501

**Supplementary Table 3. Genes regulated by LILRB4 were identified by RNA-seq.** The gene expression in THP-1 *lilrb4*-KO cells in comparison with those in THP-1 WT cells (n=2 biologically independent samples) was obtained by RNA-seq. Genes with the ration < 0.67 or >1.5 were shown. p value were calculated by F-test, student *t*-test and associative *t*-test (See also references: Dozmorov, I et al. (2003) An associative analysis of gene expression array data. *Bioinformatics* 19(2): 204-211; Dozmorov, I et al. (2009) Internal standard-based analysis of microarray data. Part 1: analysis of differential gene expression. *Nucleic Acids Res* 37(19): 6323-6339). Full datasets have been deposited in NCBI SRA database with the SRA accession number SRP155049 (<https://www.ncbi.nlm.nih.gov/sra/SRP155049>).

Gene ID	Gene Name	Average RPKM (WT)	SD	Average RPKM (KO)	SD	p-value	Ration (KO/WT)
3494	EHD3	0.010266401	0.000814364	0.00466488	0.006445903	0	0.454383136
6988	CHRD	0.010445398	0.000828816	0.004745781	0.006560315	0	0.454341776
7048	CLDN1	0.010722875	0.000851228	0.005157639	0.007145014	0	0.480993984
2638	ELF3	0.011314432	0.000899042	0.005138677	0.007115953	0	0.454170089
4149	NEURL3	0.01218126	0.001479773	0.00173535	0.002305167	0	0.142460599
31102	ASLL	0.012294376	0.004855475	0.004043483	0.00556936	0	0.328888802
9103	NBPF22P	0.012294686	0.004373329	0.002268141	9.66038E-05	0	0.184481375
14078	CYP7A1	0.012767141	0.001016642	0.005795865	0.008045358	0	0.453967345
33380	KDM5D	0.013149916	0.001047668	0.006109858	0.000253437	0	0.464630914
3263	PXDN	0.013596363	0.004838153	0.002481504	0.003358144	0	0.182512334
32685	KIAA1210	0.014060819	0.001121564	0.006595597	0.003337442	0	0.46907628
21837	TRDC	0.014710208	0.005806139	0.004563304	0.006302253	0	0.310213413
22274	C14orf38	0.014738082	0.00117656	0.006688226	0.009307346	0	0.453805694
23891	CHRN4	0.014970569	0.001195449	0.007190768	0.010020293	0	0.480326942
21158	C13orf33	0.015330282	0.001224685	0.006956498	0.009686741	0	0.453774941
20682	WSCD2	0.01580174	0.001263021	0.003620824	0.004969386	0	0.229140839
27546	SERPINB7	0.015835565	0.001265772	0.007605144	0.01060631	0	0.480257187
17218	PNLIPRP3	0.01586273	0.001267982	0.007197756	0.010027932	0	0.453752696
20767	RASAL1	0.017225198	0.006795274	0.010599308	0.014838452	0	0.615337355
32568	ZCCHC18	0.017656043	0.006964673	0.005472864	0.007588566	0	0.309971153
32492	TMEM35	0.017666905	0.001414872	0.008482782	0.011847478	0	0.480151005
5838	TDGF1	0.01776032	0.001422485	0.008057973	0.011244462	0	0.453706522
14973	CNTFR	0.017950158	0.001437958	0.008618565	0.012039503	0	0.480138648
2925	LEFTY2	0.018117423	0.001451593	0.008698751	0.012152903	0	0.480131788
2203	CASQ1	0.019463914	0.001561437	0.008830733	0.012337309	0	0.453697684
9024	CRHBP	0.019883323	0.001595678	0.009545516	0.01335041	0	0.480076489
13153	AKR1D1	0.019959411	0.007870085	0.012284998	0.017222378	0	0.615499053
29651	TARDBPL	0.020129666	0.007936996	0.013105214	0.018384583	0	0.651039803
29332	LILRP2	0.020321874	0.00801253	0.006665531	0.009277496	0	0.327997845
27172	MCART4P	0.020732397	0.001665037	0.009406397	0.013151421	0	0.453705227
14546	ADCY8	0.020888636	0.029380137	0.008303384	0.000341566	0	0.397507249
33556	DDX11L16	0.021282433	0.008389982	0.013101218	0.018376688	0	0.615588379
6968	HTR3C	0.021493526	0.001727252	0.010317924	0.01444276	0	0.480047979

5113	IL8RA	0.021595966	0.008513173	0.007082225	0.00986679	0	0.327942032
21947	DHRS2	0.021644916	0.001739632	0.010390559	0.014545481	0	0.48004616
1055	PPAP2B	0.022165403	0.001782204	0.005067921	0.007015889	0	0.228641034
8231	EDNRA	0.022299587	0.031372077	0.007898844	0.000325368	0	0.354214828
9552	PCDHGA2	0.022632645	0.001820436	0.010642157	0.005380057	0	0.470212724
4684	SLC4A10	0.022721488	0.002740368	0.012553179	0.017603887	0	0.552480477
26426	MEOX1	0.022939097	0.009040838	0.014123737	0.019822748	0	0.615705901
32204	HNRNPDP	0.023124948	0.001860733	0.010492768	0.014687782	0	0.453742349
6839	C3orf57	0.02326403	0.009168476	0.007207017	0.010041028	0	0.309792277
31736	BEND2	0.023629151	0.00190202	0.007595412	0.010592547	0	0.321442446
8737	TCP1P2	0.024209956	0.009540015	0.007937506	0.01107634	0	0.327861215
1548	NR1H5P	0.024344527	0.00069952	0.015097357	0.00175645	0	0.620154039
14343	GDF6	0.024346652	0.004915377	0.013394506	0.01879146	0	0.550158032
19131	FAM55D	0.024786035	0.009766263	0.007678166	0.010707334	0	0.309777905
32849	CXorf48	0.024808743	0.009775181	0.008133491	0.011353505	0	0.327847747
17224	RPL5P27	0.024823469	0.001999876	0.011264431	0.015779079	0	0.453781504
29061	SUMO1P4	0.024856981	0.002002623	0.011932192	0.01672568	0	0.480033834
12080	CCDC129	0.025367441	0.003055577	0.010323615	0.005219328	0	0.40696321
1898	NBPF18P	0.025420848	0.002048853	0.011989812	0.007634339	0	0.471652711
8797	FST	0.026295076	0.002120563	0.011933268	0.016724957	0	0.453821388
26413	RND2	0.026332704	0.00212365	0.016352946	0.000660258	0	0.621012814
17361	C10orf92	0.026532037	0.002140007	0.006062439	0.00842235	0	0.228495039
5064	PTH2R	0.026861276	0.002167028	0.012528326	0.000509582	0	0.466408437
403	PLA2G5	0.028268411	0.011133564	0.018413128	0.025891107	0	0.651367631
27088	CD7	0.028384653	0.002292126	0.012883362	0.018068593	0	0.45388479
31678	TLR7	0.02874419	0.007857087	0.01747271	0.024561155	0	0.607869262
1395	AMY1C	0.028779882	0.011334336	0.00943382	0.013192448	0	0.327792164
1954	PGLYRP4	0.029183737	0.011492857	0.017982096	0.025279291	0	0.616168356
23943	DNM1P38	0.029400263	0.01049177	0.005640853	0.007828384	0	0.19186405
6095	SYNPR	0.030102043	0.006068517	0.011081189	0.015519935	0	0.368120829
26369	PTRF	0.030580475	0.002472646	0.009532515	0.000390651	0	0.311719006
13085	C7orf45	0.031470993	0.00254592	0.014287448	0.02005427	0	0.453987853
10604	HNRNPA1P2	0.032358094	0.002618948	0.014691184	0.020625238	0	0.454018813
2742	IL10	0.032817048	0.012918683	0.021383097	0.030091277	0	0.651585008
26620	EPN3	0.033186266	0.022086446	0.008669616	0.000356212	0	0.26124107
30324	SRMS	0.033692131	0.047487013	0.02236217	0.000895031	0	0.663720863
9553	PCDHGA3	0.035234294	0.008285705	0.007116988	0.009913708	0	0.201990356
25325	PKD1L2	0.035449744	0.003355901	0.012280077	0.011256568	0	0.346408059
30165	PTGIS	0.035478953	0.001649121	0.017996958	0.007797069	0	0.507257298
23460	STRC	0.036039451	0.001674379	0.006393545	0.008892851	0	0.177404073
7014	HRG	0.037213524	0.00301924	0.008993936	0.012570359	0	0.241684615
20425	LGR5	0.037827645	0.003069935	0.012153755	0.017039018	0	0.321292949
10772	BZRPL1	0.037905845	0.003076391	0.018203406	0.025594516	0	0.480226894
31847	CXorf30	0.038762411	0.020854759	0.006161089	0.008564107	0	0.158944933
9556	PCDHGB2	0.039312064	0.00319253	0.014500181	0.009765917	0	0.368848115
23979	ADAMTSL3	0.039583747	0.003214977	0.018744818	0.013767296	0	0.47354835
19590	AICDA	0.039710529	0.021366018	0.005961724	0.008279918	0	0.150129549
19073	POU2AF1	0.042220093	0.011783139	0.01726238	0.024263704	0	0.40886646
9970	FOXO1B	0.042626389	0.008572916	0.007898614	0.011019094	0	0.185298691

13942	RPL3P10	0.04306225	0.016936563	0.01334798	0.018725661	0	0.309969391
13138	FAM180A	0.044084832	0.003587225	0.010653105	0.014916778	0	0.241650117
31133	GGTLC4P	0.044274224	0.062452352	0.02211529	0.000885425	0	0.499507127
30071	SEMG1	0.044703811	0.003638467	0.020907085	0.00083837	0	0.467680155
14391	GRHL2	0.044844329	0.001185701	0.022405391	0.012782848	0	0.499625958
26111	CCL7	0.045033742	0.003665786	0.020466787	0.028793176	0	0.45447672
27006	C1QTNF1	0.046381158	0.029604137	0.011223149	0.000457879	0	0.241976473
12211	NPC1L1	0.046453748	0.001225946	0.026840949	0.001068794	0	0.577799426
13145	PTN	0.046789535	0.003811223	0.010687489	0.014963159	0	0.228416227
7869	SNCA	0.046969698	0.003826152	0.021349862	0.030042032	0	0.454545447
26852	KCNJ2	0.047077601	0.003835094	0.012616288	0.00051306	0	0.267989191
14213	HEY1	0.047161389	0.003842037	0.021855592	0.009473116	0	0.46342129
6186	CADM2	0.048601542	0.003624156	0.030480743	0.00120938	0	0.627155887
22011	PRKD1	0.049225829	0.004013182	0.028090841	0.027022527	0	0.570652474
32992	PASD1	0.049815541	0.003712954	0.02086866	0.000836873	0	0.418918664
18358	MS4A5	0.050157438	0.004090453	0.022804416	0.032099082	0	0.454656721
7063	FGF12	0.050393208	0.002317455	0.026083894	0.01316359	0	0.517607334
7365	RPL32P12	0.051211102	0.004177878	0.024608197	0.034652257	0	0.480524646
13649	C8orf74	0.051366116	0.020190722	0.03172577	0.044715782	0	0.617640043
157	TAS1R1	0.053634309	0.004379051	0.024750351	0.016680921	0	0.461464895
24014	FABP5L9	0.054738996	0.004470813	0.024895955	0.035056964	0	0.454812041
4398	RPL17P15	0.055779392	0.011197491	0.010336942	0.014467411	0	0.185318295
17208	ABLIM1	0.056118269	0.007573158	0.024258679	0.010517287	0	0.432277751
11721	T	0.057450728	0.004696197	0.006606839	0.009192249	0	0.115000101
20684	CMKLR1	0.057972583	0.004739591	0.027231731	0.005327782	0	0.469734651
7571	PDCL2	0.058918962	0.083163139	0.039274615	0.001547123	0	0.666587026
28536	UPK1A	0.059125089	0.00483545	0.014288697	0.020058282	0	0.241668937
7070	ATP13A4	0.059214129	0.004842858	0.031458909	0.009896155	0	0.531273697
3449	TRIM54	0.061707046	0.005050318	0.018764877	0.026386311	0	0.304096187
2662	MYOG	0.062162511	0.005088237	0.019450852	0.000781551	0	0.312903252
9651	CDX1	0.06234487	0.033578182	0.018607062	0.026163126	0	0.298453776
25874	KRT17P2	0.062537645	0.020248792	0.012478142	0.017495525	0	0.199530091
31308	APOL4	0.063478206	0.005197799	0.015051833	0.007604221	0	0.23711812
4648	ERMN	0.063689652	0.007589518	0.02604433	0.013143662	0	0.40892561
25545	RPL21P125	0.064054012	0.005245761	0.030797744	0.043405599	0	0.480808978
17681	HPX	0.064241688	0.012883726	0.025047825	0.035273986	0	0.389899859
2761	CR1	0.065448192	0.010419983	0.015380218	0.003018757	0	0.23499836
21088	ATP12A	0.066144469	0.012489333	0.0187593	0.01263864	0	0.28361102
20968	RPS6P21	0.066181992	0.025992641	0.021713799	0.030558961	0	0.328092252
31947	RNU12	0.066385535	0.005440038	0.03192205	0.044995608	0	0.48085852
3491	GALNT14	0.066579448	0.005456201	0.012532925	0.000509763	0	0.188240143
20281	LRP1	0.067685745	0.002167908	0.006793202	0.002936378	0	0.100363856
13909	FKSG2	0.069286957	0.005681963	0.033321424	0.046974621	0	0.480919142
33066	TEX28	0.069574958	0.027320684	0.03232584	0.045564409	0	0.464618894
32562	H2BFXP	0.069680498	0.02736199	0.015292962	0.021478526	0	0.219472629
33101	H2AFB1	0.069817773	0.005726241	0.033577469	0.047336724	0	0.480930107
17042	RPL7P36	0.071003895	0.02787992	0.043926677	0.06197047	0	0.618651659
25624	SLC13A5	0.071126437	0.00183437	0.041968239	0.045121694	0	0.590051199
20060	FIGNL2	0.071178256	0.005269489	0.044930229	0.012251551	0	0.631235321



23728	LBXCOR1	0.071370549	0.003247166	0.036687408	0.001448012	0	0.514041273
27385	NPM1P1	0.073626312	0.006044101	0.035414818	0.049935128	0	0.481007634
28625	SPRED3	0.07368983	0.028931	0.012162121	0.017050848	0	0.165044767
14534	SRRM1L	0.074400552	0.105053968	0.033145163	0.001311979	0	0.445496202
3688	RPL26P13	0.07453007	0.006119569	0.035850882	0.050551815	0	0.481025735
32553	TMEM31	0.075325198	0.040586393	0.023773868	0.033472339	0	0.315616411
528	ZNF683	0.075714699	0.009004139	0.020516734	0.000823151	0	0.270974255
11605	RAET1E	0.076196921	0.107597864	0.038214236	0.001506526	0	0.501519423
20243	SLC39A5	0.07643948	0.005651325	0.023417029	0.032965447	0	0.306347304
27779	CREB3L3	0.077162705	0.016077938	0.046922785	0.066209852	0	0.608101875
26574	GIP	0.077528678	0.041776355	0.024470772	0.034457909	0	0.315635093
26342	HAP1	0.081409626	0.006011567	0.042927546	0.0137013	0	0.527303069
11861	OCM	0.081781853	0.115492704	0.048539237	0.001900545	0	0.593520881
20895	NIACR2	0.08429758	0.006936153	0.02311202	0.032534099	0	0.274171807
24049	PLIN	0.085023661	0.006996921	0.051089776	0.00601331	0	0.600888923
19622	NPM1P16	0.0856336	0.007047975	0.013096068	0.018369404	0	0.152931416
7975	AGXT2L1	0.085808661	0.007062629	0.055627277	0.031784309	0	0.648271123
23682	RASL12	0.090362078	0.002299977	0.032993631	0.010539921	0	0.365126965
26364	HCRT	0.091684311	0.03596965	0.028498399	0.040151589	0	0.31083179
10874	ENPP5	0.092096848	0.016124494	0.028919366	0.009242446	0	0.314010379
10586	CYP21A1P	0.092681343	0.010995609	0.028470359	0.040111935	0	0.30718544
10841	C6orf154	0.092831333	0.004189199	0.055923259	0.013377816	0	0.602417922
5144	FEV	0.095751893	0.007895774	0.027278863	0.01376545	0	0.284891104
32277	CXorf65	0.09718073	0.052392318	0.030689672	0.043252762	0	0.315799973
17841	LDHC	0.097230307	0.01152877	0.05186878	0.034991131	0	0.533463095
27850	CRB3	0.097411908	0.008035013	0.04689874	0.066175846	0	0.481447705
2701	RPL13AP11	0.097693664	0.052669472	0.030852067	0.043482424	0	0.315804174
31717	MAGEB17	0.09852059	0.020561352	0.016345028	0.022964128	0	0.165904691
10152	RPL7P26	0.099729244	0.039114924	0.065229118	0.092098915	0	0.654062092
29364	IL11	0.099770099	0.018895265	0.021797639	0.011004309	0	0.218478679
17886	RPL36AP40	0.102448969	0.008457751	0.023450188	0.033012341	0	0.228896284
9581	PCDH1	0.104043833	0.003899268	0.065657682	0.028532188	0	0.631057896
24394	RPL18P12	0.111925977	0.009254045	0.052602989	0.002054916	0	0.469980161
27567	RPS2P6	0.113206543	0.009361732	0.052720786	0.022898572	0	0.465704411
20980	GALNT9_1	0.113779426	0.005101915	0.067555111	0.038611959	0	0.593737492
17433	MUPCDH	0.114932644	0.005151993	0.054704712	0.022975204	0	0.475971924
25052	CCL17	0.116790805	0.009663251	0.02674705	0.037674808	0	0.229016748
19245	CRTAM	0.11860517	0.00981594	0.042238326	0.021296186	0	0.356125507
2308	RPS3AP10	0.118966239	0.046632572	0.077868445	0.109973622	0	0.654542372
24379	OR1F2P	0.119190466	0.168399918	0.034351049	0.001358334	0	0.288202991
19025	CASP5	0.1191917	0.0238022	0.022781066	0.000911323	0	0.191129633
24676	IL27	0.119337332	0.014115809	0.032418181	0.00128401	0	0.271651633
10558	LY6G6C	0.119902973	0.04699853	0.039411051	0.055586654	0	0.328691188
1205	RPL23P3	0.123516021	0.048409967	0.040602945	0.057272248	0	0.328726143
10299	RSL24D1P	0.12788003	0.068985283	0.040414887	0.057006294	0	0.316037517
6644	RBP1	0.12853372	0.010652158	0.051852554	0.002026436	0	0.403415962
3616	C2orf61	0.132890956	0.047687901	0.059117613	0.083455942	0	0.444858058
10590	CYP21A2	0.135705097	0.011256833	0.079298084	0.019374609	0	0.584341238
19442	RPL23AP14	0.136087578	0.011289099	0.064025319	0.002487009	0	0.470471438

32621	GN5P2	0.138164635	0.01146434	0.031664968	0.044629794	0	0.229182869
30700	H2BFS	0.138269552	0.054172046	0.085861088	0.121274682	0	0.620968875
641	SPOCD1	0.141507572	0.020411778	0.042727713	0.03503288	0	0.301946481
12287	SLC25A5P3	0.145670851	0.012098003	0.069592753	0.060572788	0	0.477739726
29727	RPL21P3	0.147478808	0.017400802	0.020665674	0.029076689	0	0.140126397
16644	MRPL35P2	0.15252316	0.215536021	0.09080448	0.003491622	0	0.595348798
15906	C9orf50	0.154750454	0.012865212	0.093836873	0.018230932	0	0.60637543
334	RPL22P3	0.156038132	0.01297408	0.035781136	0.050450935	0	0.229310207
14977	ARID3C	0.158075329	0.007014952	0.094784148	0.015484332	0	0.599613799
13028	RPL31P39	0.161979913	0.013476625	0.07813114	0.110345129	0	0.482350793
11614	RAET1L	0.172855992	0.110074852	0.021713799	0.030558961	0	0.125617854
6092	RPS10P10	0.179321656	0.070194973	0.028063116	0.039536007	0	0.156495968
2162	AIM2	0.191203948	0.017648267	0.033884066	0.014701863	0	0.177214258
28376	RPL36AP51	0.191575349	0.270764156	0.085743347	0.003302528	0	0.447569832
19067	ARHGAP20	0.193255737	0.012098318	0.119604188	0.004562062	0	0.618890751
5351	RAMP1	0.193945968	0.038599893	0.055143592	0.023953404	0	0.284324506
11449	RPL21P67	0.194903598	0.016266519	0.061359608	0.002386389	0	0.314820296
6156	OR7E66P	0.194931558	0.052776902	0.046798957	0.001834322	0	0.240078913
5347	PRLH	0.198810629	0.077797168	0.062045387	0.087594195	0	0.312082848
13800	NKX3-1	0.201088023	0.009195828	0.025369178	0.020790587	0	0.126159565
31158	IGLL3	0.213642535	0.009390226	0.053798903	0.075931906	0	0.25181738
28395	RPL34P34	0.213670154	0.115397097	0.064100076	0.090499964	0	0.299995459
18791	SLCO2B1	0.216963892	0.018140339	0.095078182	0.019652613	0	0.438221223
23487	TRIM69	0.22634818	0.045130109	0.052803636	0.022934641	0	0.233285002
31392	PDGFB	0.229309733	0.033695502	0.034637241	0.008303929	0	0.151050025
28054	VN2R13P	0.231151755	0.124860289	0.069371936	0.097955501	0	0.300114253
21578	FAM155A	0.234355901	0.008963683	0.145070466	0.019085398	0	0.619017767
4342	IL1A	0.234929606	0.039811807	0.080582541	0.003109365	0	0.343007179
32348	RPS6P26	0.235634366	0.04946045	0.061005194	0.030736284	0	0.258897696
4475	RPL19P4	0.25784293	0.02162076	0.118195139	0.167001936	0	0.458399768
3733	RPL27P6	0.25971226	0.030437268	0.10513476	0.045737648	0	0.404812465
6868	SDHDP3	0.259805833	0.040808772	0.11409584	0.086247401	0	0.439158115
17303	GALNAC4S-6ST	0.270855065	0.038659658	0.140002293	0.000261316	0	0.516890068
20370	MSRB3	0.278181522	0.023355871	0.166276723	0.022572878	0	0.597727419
10418	HCG4	0.278855685	0.023413421	0.148081913	0.005612802	0	0.531034228
30576	FLJ46020	0.284791943	0.023920272	0.181329702	0.132841309	0	0.636709383
15670	TXNDC8	0.289377144	0.024311885	0.138391004	0.101415347	0	0.478237508
18936	SNORA32	0.29411317	0.024716488	0.142209602	0.200965759	0	0.483520005
29108	SIGLEC11	0.295551942	0.030062744	0.142701066	0.031951139	0	0.482829057
28404	RPL34P33	0.307372758	0.120104503	0.151774076	0.214491969	0	0.493778556
22018	RPL27P1	0.311957056	0.224376428	0.068145251	0.002642276	0	0.218444332
2188	C1orf204	0.312001143	0.006404001	0.047462139	0.011362262	0	0.152121683
33139	CRLF2_2	0.313547586	0.026377888	0.129167982	0.124136582	0	0.41195655
31	NCRNA00115	0.323952727	0.027268101	0.100103766	0.104161975	0	0.309007325
30133	SLC13A3	0.327903159	0.004071675	0.207241554	0.018980482	0	0.632020608
2749	FCAMR	0.336144974	0.028311805	0.073598208	0.002847353	0	0.218947815
965	ELAVL4	0.356992048	0.050377864	0.129553048	0.004676793	0	0.362901775
7118	RPS29P3	0.358566085	0.140036107	0.115642338	0.004415316	0	0.322513319

15255	CCDC29	0.361014234	0.032999731	0.191744013	0.083533074	0	0.531125909
26113	CCL8	0.370977869	0.070933126	0.027097465	0.001078719	0	0.073043346
29743	RIN2	0.373036602	0.048982898	0.151283747	0.05029984	0	0.405546658
10523	HLA-X	0.385197304	0.032516944	0.131029856	0.041665281	0	0.340162964
10302	HIST1H2AI	0.413625051	0.017795142	0.143366639	0.005439283	0	0.346610146
10291	MCFD2L	0.439057251	0.123927973	0.057493636	0.081157046	0	0.130947924
30800	FABP5L11	0.458378321	0.150511705	0.050867777	0.001989045	0	0.110973349
28080	RPS29P23	0.469195169	0.03973775	0.108215509	0.152888607	0	0.230640714
22658	BDKRB1	0.47831552	0.016976153	0.117129606	0.013894601	0	0.244879375
5196	SCG2	0.51022173	0.056439276	0.100692362	0.063128367	0	0.197350204
11974	IL6	0.533683673	0.088942889	0.104573032	0.024944283	0	0.195945721
26497	RPS26P8	0.533738853	0.04530081	0.250078794	0.143242876	0	0.468541483
7786	C4orf22	0.536015206	0.017737328	0.356348193	0.066336673	0	0.664809859
27548	SERPINB10	0.592012487	0.050332925	0.265661335	0.049368611	0	0.44874279
26728	RPL12P38	0.619272169	0.026290522	0.186183528	0.106592696	0	0.300648952
1203	IFI44L	0.631371579	0.053736322	0.177840122	0.038882723	0	0.281672675
10704	C6orf81	0.634473483	0.054004694	0.359087231	0.073698677	0	0.565960974
25492	C17orf91	0.654179755	0.034305243	0.425146106	0.139251583	0	0.649891873
26889	CD300E	0.776592771	0.1665478	0.113246108	0.027712956	0	0.145824314
7459	TLR1	0.799586852	0.017894636	0.368225763	0.077293844	0	0.460520033
4620	TNFAIP6	0.804011771	0.051429815	0.142365677	0.038642639	0	0.177069145
25033	MT1H	0.886717696	0.075891964	0.421375337	0.015477104	0	0.475207993
14234	FTHL11	0.923984551	0.079134971	0.406297575	0.220987013	0	0.439723343
26960	AANAT	1.001429388	0.20692078	0.200411771	0.007528233	0	0.200125714
2561	RGS1	1.011646185	0.262755462	0.096022848	0.003686259	0	0.094917422
6398	CD80	1.084736498	0.128703299	0.279005406	0.023835753	0	0.257210306
5833	CCRL2	1.210717898	0.158189194	0.249721849	0.09184039	0	0.206259319
5811	CDCP1	1.219927051	0.2126853	0.210545276	0.053292473	0	0.172588415
17464	DUSP8	1.228956925	0.0419835	0.645857741	0.028664915	0	0.525533261
12243	IGFBP3	1.265819873	0.09037107	0.576991517	0.023679432	0	0.455824347
564	FGR	1.588569311	0.251680035	0.285292807	0.087098465	0	0.179591035
20463	RPL21P98	1.73228851	0.063397299	0.865116659	0.48866907	0	0.499406798
31213	OSM	1.751850807	0.083761988	1.111293206	0.265793547	0	0.634353794
15625	ABCA1	1.860878006	0.030745801	0.750448864	0.054135245	0	0.403276766
7742	CXCL10	2.160504624	0.021914236	0.699150889	0.205156927	0	0.323605366
1120	PDE4B	2.218625881	0.048056106	1.441071183	0.154221711	0	0.649533207
29342	FCAR	2.411683834	0.175436304	1.487981717	0.109609951	0	0.616988718
31584	KLHDC7B	2.418726688	0.163433302	1.065847431	0.15559048	0	0.440664684
21253	C13orf31	2.673324185	0.115519255	1.713775513	0.075671522	0	0.641065353
30132	C20orf123	2.833515919	0.171522225	0.735792571	0.010006503	0	0.259674762
26270	CCR7	2.993139627	0.095931602	1.932035505	0.072201203	0	0.645487931
9827	CPEB4	3.043228555	0.100268862	1.938248716	0.110000606	0	0.636905405
15758	TRAF1	3.050653953	0.458591396	0.943933333	0.023273354	0	0.309419996
18996	BIRC3	3.171785414	0.21686615	1.847018902	0.087265749	0	0.582327825
20221	MMP19	3.22209397	0.080474045	1.884420262	0.073232754	0	0.584843359
9736	IL12B	3.609241842	0.49891917	0.300536397	0.051326689	0	0.083268567
2220	SLAMF7	3.866463976	0.207458231	0.188229935	0.064048204	0	0.048682707
20608	GAS2L3	4.431807648	0.358249381	2.699860242	0.456812454	0	0.609200682
10496	IER3	4.51142709	0.830885315	0.903088534	0.1648166	0	0.200178018

22656	BDKRB2	4.518411081	0.161280206	2.251803672	0.128571774	0	0.498361843
12522	STX1A	4.609782778	0.391786085	2.258581419	0.178276541	0	0.48995398
23915	BCL2A1	4.835088491	0.214678647	1.724977842	0.088196397	0	0.356762414
19325	SLC37A2	4.907433019	0.488583483	3.119723315	0.007503565	0	0.635713886
2219	CD48	5.276854368	0.076179075	0.969466926	0.253856258	0	0.183720614
1501	CTTNBP2NL	5.45068774	0.410515522	3.42808382	0.366843581	0	0.628926841
2670	BTG2	5.686822502	0.413818498	3.651660162	0.778552636	0	0.642126629
31290	HMOX1	5.865778583	0.150847834	2.262933314	0.24464114	0	0.385785669
15832	ZBTB43	5.877113028	0.223500146	3.831184299	0.235514874	0	0.651882018
19163	IL10RA	5.947173095	0.491948684	3.320357601	0.045214429	0	0.558308552
5501	IRAK2	6.138638686	0.311872597	3.276000011	0.00521317	0	0.533668811
20861	OASL	6.244386735	0.18108074	3.409797537	0.373494492	0	0.546058033
30019	MAFB	6.392753311	0.235464875	3.793994185	0.143862913	0	0.59348359
7037	BCL6	6.659200385	0.138585415	2.911847605	0.16583589	0	0.437266854
5886	UCN2	6.673760717	1.078882578	3.890655494	0.023340457	0	0.582977973
10783	TREM1	6.677604454	0.198089749	2.565664515	0.69779596	0	0.384219301
24027	ISG20	6.903108888	0.057110106	4.410899524	0.117626124	0	0.638972903
5220	CCL20	7.371698074	0.203693637	3.803662041	0.545535456	0	0.5159818
23365	BMF	8.018457119	0.795164199	5.031536441	0.009841685	0	0.627494338
7708	IL8	8.317012748	0.729094506	2.949930267	0.130141931	0	0.354686275
6884	SKIL	8.318180241	0.055471569	5.140846853	0.085105631	0	0.618025422
20691	SSH1	8.571475435	0.408546908	5.464367385	0.237271824	0	0.637506043
12260	UPP1	8.824826106	0.278376956	3.719198545	0.268396291	0	0.421447233
28291	GDF15	8.901407187	0.509033178	5.345691239	0.064743491	0	0.600544512
26110	CCL2	11.26323157	1.227947572	5.022543104	0.698867683	0	0.445923807
5726	CSRNP1	11.82518468	0.896243884	7.171868276	0.313481172	0	0.606491016
21248	EPST11	11.85963375	0.751813687	7.75568894	0.820794847	0	0.653956868
4650	CYTIP	12.96503317	0.269344944	5.441714589	0.626575106	0	0.419722381
20761	OAS1	13.96324131	0.360184694	9.109235664	0.152087376	0	0.652372573
20764	OAS2	15.82309047	0.072423169	8.160568436	0.050437491	0	0.515737962
27783	EBI3	16.10939838	0.060915402	2.996117199	0.224608873	0	0.185985667
14402	KLF10	16.1446267	0.510557492	9.51426444	0.212784356	0	0.589314613
9122	ARRDC3	16.39914904	0.307198558	10.3572731	0.270228847	0	0.631573813
20249	IL23A	19.22269027	1.42518226	9.502052204	0.463942758	0	0.494314379
9454	RPL7P19	19.56655146	0.108947941	11.21462753	1.011753743	0	0.573152993
5109	TNS1	21.65854245	0.106663676	10.40597868	0.823473122	0	0.480456093
7851	SPP1	21.95246591	1.870775768	10.47028965	0.381410174	0	0.47695278
28863	BCL3	22.76917671	0.561795737	11.53961492	0.141610727	0	0.506808615
27990	ICAM1	26.58944739	0.434335693	15.84314909	0.396140057	0	0.595843488
26163	CCL4	29.73224023	0.365472047	2.56884213	0.47419538	0	0.086399212
28281	IFI30	32.61498502	1.349855996	18.7078788	0.517806224	0	0.573597651
26167	CCL4L1	34.99209595	2.313418169	5.213763855	0.247053595	0	0.14899833
11983	GPNMB	37.57690164	0.566182008	17.41304793	0.432946865	0	0.46339765
26166	CCL3L3	38.39059342	3.315288617	6.891516392	0.621450854	0	0.179510546
18304	LPXN	40.15282584	0.959392334	24.84930761	0.64016558	0	0.618868214
5813	TMEM158	48.25656783	3.010742416	9.994427161	0.467415728	0	0.207110195
9093	VCAN	49.49577253	1.140960404	27.95614534	1.945228761	0	0.56481885
26172	CCL3L1	54.09996107	2.280870493	7.166423999	0.115774012	0	0.132466343
11681	SOD2	77.50042992	0.151432787	49.02812666	1.149837721	0	0.63261748

2508	RGS16	77.53672493	2.059444138	41.51698864	1.182874686	0	0.535449346
4343	IL1B	90.86695509	0.725501915	13.03987309	0.391421394	0	0.143505118
28827	PLAUR	92.00921053	2.162848417	52.30805982	1.454054583	0	0.568508951
26162	CCL3	93.13441476	3.742628207	10.74801077	1.083446244	0	0.115403214
9942	SQSTM1	93.77919403	0.757537623	61.19489001	0.439830426	0	0.65254229
14559	NDRG1	257.0115211	6.398531939	154.4163108	2.038202724	0	0.600814742
12000	RPL7AP41	0.110561567	0.03964818	0.041129488	0.001618062	1.1694 E-258	0.372005296
30325	C20orf195	0.081964734	0.029360793	0.030444359	0.001207977	3.6134 E-255	0.371432409
29800	C20orf39	0.037682285	0.013459632	0.013940522	0.000565351	1.7483 E-246	0.369948961
8557	SEMA5A	0.015686437	0.005584851	0.005777048	0.000239995	2.6786 E-237	0.368282991
26170	CCL3L2	3.842832053	1.13453594	0.976315754	0.059312646	3.9545 E-216	0.25406152
32856	CROCCP	0.026457156	0.006211281	0.01090431	0.000445224	1.2492 E-200	0.412149736
27472	RAB27B	0.441815368	0.09312138	0.201760847	0.00757739	3.9639 E-186	0.456663262
19232	GRIK4	0.100951211	0.025815816	0.047074825	0.001844824	8.2983 E-160	0.466312627
12817	ACTL6B	0.056646928	0.044632739	0.022057993	0.000883195	1.0823 E-157	0.389394335
7879	PGDS	0.05393872	0.042501483	0.020997298	0.000841886	2.2623 E-157	0.38928062
31718	RPL6P30	0.155187451	0.042064418	0.074189295	0.002869555	1.6694 E-152	0.478062464
16973	PIPSL	0.096936364	0.047904049	0.044750577	0.001756281	1.4381 E-143	0.461649018
12829	ACHE	0.202393715	0.050507311	0.102479404	0.003926639	5.4395 E-133	0.506336892
27142	MYOM1	0.160641253	0.047545804	0.080706023	0.003113991	1.1737 E-131	0.502399116
26008	SARM1	0.038132023	0.015003517	0.019387218	0.000779066	4.3839 E-111	0.508423531
31105	VPREB3	0.12618197	0.096138948	0.057704427	0.002248209	4.9002 E-109	0.457311194
4727	AF357534	0.082178626	0.052400113	0.039780589	0.001566484	4.2859 E-107	0.484074643
16437	EIF3LP2	0.07059734	0.04502751	0.034143997	0.001350378	1.8238 E-106	0.483644248
24010	DNM1P45	0.050709922	0.006058979	0.02733696	0.001087983	1.067E- 105	0.539085032
32742	RPL3P12	0.054590496	0.034833996	0.026362655	0.00105028	2.0373 E-105	0.482916569
17320	ALDOAP2	0.051799019	0.039419898	0.023585903	0.0009426	2.4557 E-105	0.455334938
7922	EMCN	0.047371582	0.03023518	0.022857529	0.000914296	7.5589 E-105	0.482515639
1393	AMY1B	0.040590614	0.03088021	0.018460417	0.000742837	2.2929	0.454795203

						E-104	
25784	TEKT3	0.041479307	0.02648059	0.019998853	0.000802947	2.5479 E-104	0.482140476
14449	MAPK6PS5	0.035287457	0.026840768	0.01603764	0.000647877	8.1185 E-104	0.454485576
32506	ARMCX1	0.034895548	0.026542279	0.015858662	0.000640847	8.9748 E-104	0.454460887
25821	ZNF287	0.030022485	0.00836506	0.015873424	0.000641427	1.2056 E-103	0.528717854
31685	EGFL6	0.029636702	0.018931402	0.014260952	0.000577982	5.2294 E-103	0.481192253
8640	CDH10	0.023000288	0.017484893	0.010431558	0.00042644	3.5722 E-102	0.453540322
7077	GP5	0.021486355	0.01633253	0.009741701	0.000398987	6.4504 E-102	0.453390134
10718	C6orf222	0.020101375	0.015278417	0.009110812	0.000373832	1.1468 E-101	0.453243212
119	PRDM16	0.017253132	0.013110916	0.007814055	0.00032197	4.2462 E-101	0.452906471
18988	TRPC6	0.015410902	0.009855523	0.007387263	0.00030485	1.5097 E-100	0.479353088
16663	MYPN	0.012373991	0.007916416	0.005923892	0.000245928	9.5168 E-100	0.478737386
32898	FGF13	0.157425005	0.056527112	0.092574266	0.00330697	1.8679 3E-86	0.588053121
32651	LRCH2	0.037265811	0.013310326	0.020641048	0.000827999	3.5862 5E-86	0.553886993
22253	C14orf37	0.1693777	0.038406442	0.092757326	0.004124203	2.0517 2E-78	0.547636003
2632	LMOD1	0.032854757	0.021865455	0.017112075	0.000690037	2.2389 3E-76	0.520840106
28035	ELAVL3	0.027880614	0.018550048	0.01450959	0.000587778	6.0280 9E-76	0.520418605
17297	RPS26P39	0.151812418	0.095499108	0.083763056	0.00322845	9.6580 1E-71	0.551753656
23279	TRPM1	0.081994246	0.016416374	0.049785505	0.001947927	6.4313 5E-70	0.607182908
14410	FLJ10489	0.194903598	0.016266519	0.122339701	0.004663299	1.8253 8E-66	0.627693396
6980	CAMK2N2	0.174773406	0.106374592	0.099045087	0.003798837	4.3017 7E-66	0.566705706
2547	PTGS2	1.169825926	0.138730674	0.70107249	0.032145886	1.6984 2E-55	0.59929642
2244	APOA2	0.34467936	0.186349768	0.21285348	0.007981206	3.0954 4E-52	0.617540547
29932	MT1P3	0.295337021	0.11541696	0.18970196	0.007137621	7.1167 E-52	0.642323672
1382	RPS20P6	0.151242961	0.059237182	0.096778245	0.003714407	8.5816 9E-51	0.639885946
2065	RXFP4	0.04831758	0.026008415	0.029545099	0.00117329	3.6061 5E-49	0.611477223

29295	CACNG6	0.08332059	0.088309213	0.036568952	0.001443469	3.6517 7E-49	0.438894544
8474	TRIML2	0.042644553	0.022948316	0.026059822	0.001038553	5.4627 4E-49	0.611093802
17482	TNNT3	0.041760187	0.016426124	0.026527068	0.001056645	7.3748 6E-49	0.635223883
19640	KLRK1	0.033909344	0.013347229	0.021514551	0.000862038	1.4591 7E-48	0.634472641
16433	CCNYL2	0.031342119	0.016854503	0.019123377	0.000768757	1.4972 2E-48	0.610149479
12530	ELN	0.030674195	0.012077827	0.019450852	0.000781551	2.0194 3E-48	0.63411125
27898	CLEC4M	0.028452059	0.015297029	0.017351576	0.000699424	2.0458 9E-48	0.609853106
1610	ZNF697	4.939256536	0.425149214	2.998842695	0.144485413	2.6921 2E-48	0.607144552
25206	CLEC18A	0.027395143	0.010790744	0.017360412	0.00069977	2.9050 1E-48	0.633704016
27831	FUT5	0.026944947	0.010613996	0.017073514	0.000688525	3.0632 8E-48	0.633644351
11437	MESTP1	0.022745163	0.012222621	0.013855622	0.000562003	4.1795 E-48	0.609167828
16441	DUXAP3	0.016297316	0.008751175	0.009911193	0.000405737	1.1861 7E-47	0.608148823
830	CLDN19	0.014960832	0.005904732	0.009448206	0.000387291	1.9367 6E-47	0.631529422
21514	HSP90AB6P	0.010175722	0.005458279	0.006173732	0.000256014	4.9726 9E-47	0.606711944
13305	FAM115D	0.025613092	0.007967718	0.012784641	0.000866805	1.8085 8E-44	0.499144767
25326	BCMO1	0.105403485	0.050064432	0.069486912	0.002692777	8.1450 6E-39	0.659246818
11958	ITGB8	0.064625412	0.025402589	0.009637284	0.002332514	1.7247 8E-27	0.149125296
22183	FRMD6	0.068922585	0.013815787	0.042370294	0.002929595	1.6659 E-22	0.61475196
27920	ANGPTL4	0.860835214	0.326418982	0.570832801	0.033123957	7.6536 3E-20	0.663115067
9811	DUSP1	2.320017245	0.225839039	1.351605337	0.114816471	2.8540 6E-19	0.582584177
31140	ADORA2A	0.809754114	0.093610504	0.424233927	0.043095887	2.8791 4E-19	0.523904627
15730	TNFSF15	0.260446635	0.083877945	0.059172857	0.01415153	7.4320 3E-18	0.227197627
10629	HLA-DOA	0.300311019	0.124999427	0.106509457	0.017666755	2.4218 9E-17	0.354663832
3059	PP2672	0.171597723	0.242511526	0.091209785	0.039666579	2.2204 5E-16	0.531532609
2890	FAM177B	0.199993149	0.035230434	0.074523277	0.032394414	2.2204 5E-16	0.37262915
17282	HTRA1	0.150029178	0.034686576	0.056734817	0.058233441	6.6613	0.378158553

						4E-16	
15491	SUSD3	0.046547606	0.025053579	0.013882229	0.019481204	8.8817 8E-16	0.298237227
9822	RPL7AP33	0.09342103	0.05036094	0.055647392	0.078546064	1.1102 2E-15	0.595662369
9533	PCDHB4	0.132829529	0.00971715	0.088517014	0.009951561	3.3306 7E-15	0.666395601
16112	FAM157B	0.778943705	0.22046841	0.510384941	0.037038066	3.8633 6E-15	0.655226992
29407	VN2R18P	0.080095604	0.043162687	0.047674731	0.067271018	4.6629 4E-15	0.595222817
32360	RPL21P134	0.124642863	0.079418515	0.029463352	0.04151624	5.5511 2E-15	0.236382186
168	TNFRSF9	0.49396755	0.049889154	0.31051837	0.026019934	5.6271 2E-15	0.628620988
19803	BHLHE41	0.123999927	0.023521425	0.049271527	0.008214744	7.5636 9E-15	0.397351263
26173	CCL4L2	5.639579596	1.792055005	1.020512929	0.593207687	7.7715 6E-15	0.180955497
7261	EVC2	0.012255705	0.004840253	0.00798023	0.011136761	1.3544 7E-14	0.651144079
27706	ADAT3	0.035151987	0.018908154	0.010479602	0.014669163	1.4432 9E-14	0.29812262
6326	DPPA4	0.109553134	0.035763361	0.065709174	0.005874495	1.6631 6E-14	0.599792737
5223	WDR69	0.033294722	0.017906958	0.009925603	0.01388569	2.4202 9E-14	0.298113415
2599	RPS2P9	0.064583601	0.034786681	0.040555766	0.057205526	5.3290 7E-14	0.627957643
4673	PLA2R1	0.14845024	0.017514055	0.080193431	0.013085883	1.3322 7E-13	0.540204115
889	PTCH2	0.174769067	0.062778987	0.097697142	0.010285722	1.4906 2E-13	0.559007058
31783	RPS26P58	0.827945316	0.249673028	0.21486138	0.197352888	1.5054 6E-13	0.25951156
5715	SLC22A14	0.028152676	0.015135709	0.008881459	0.012411291	1.7252 9E-13	0.31547476
16714	NODAL	0.279032511	0.036105437	0.154476395	0.085184718	2.9376 5E-13	0.553614322
14490	RPL35AP19	0.155240622	0.098876131	0.077262327	0.109116443	3.0908 6E-13	0.497694008
3531	SULT6B1	0.07486021	0.047741468	0.017656954	0.024819471	3.2485 1E-13	0.235865675
32981	MAMLD1	0.804915707	0.069980511	0.51645462	0.080129533	3.4239 3E-13	0.64162572
29338	KIR2DL4	0.128230791	0.089966397	0.022054945	0.031041414	4.1255 9E-13	0.171994142
8871	ISCA1L	0.074348127	0.047415465	0.018539354	0.026069618	4.6740 4E-13	0.249358723
7831	SLC10A6	0.048824023	0.026281638	0.028998222	0.040858446	4.7695 2E-13	0.593933491



8282	RBM46	0.022128425	0.01189047	0.006599069	0.009181261	1.0289 5E-12	0.298216857
13087	CPA4	0.019824026	0.010649597	0.00591366	0.008211946	2.7111 6E-12	0.298307726
8925	SERF1B	0.734885889	0.440639706	0.141441283	0.044720564	4.4200 5E-12	0.192467
15578	NR4A3	0.118028171	0.038128759	0.024100107	0.007706923	5.1281 6E-12	0.204189443
17773	DKK3	0.018687534	0.010037735	0.005902964	0.008199064	6.5940 6E-12	0.315877111
12154	AMPH	0.16478223	0.028983454	0.092410647	0.010937872	7.7320 5E-12	0.560804687
28223	KLF2	2.928885131	0.286820761	1.830432265	0.233763482	1.0326 6E-11	0.624958707
32817	MBNL3_1	0.325817323	0.074171883	0.126218892	0.024923524	1.7673 9E-11	0.387391595
1650	NBPF8	0.019110927	0.005937518	0.004377353	0.001890164	1.9779 1E-11	0.229049765
1485	C1orf88	0.477843201	0.093146945	0.29921641	0.029088955	2.1722 2E-11	0.62618116
14569	MAPRE1P	0.03125486	0.016807474	0.018534324	0.026060259	2.2879 7E-11	0.593006124
29603	UBE2V1P1	0.03014717	0.016210496	0.017875594	0.025128674	3.0906 8E-11	0.592944331
10236	HIST1H2AC	1.035558592	0.494796693	0.582046493	0.064213552	3.2631 E-11	0.562060416
20455	PHLDA1	0.853166537	0.159639819	0.400382376	0.064905133	5.6905 6E-11	0.469289826
3787	RPL36AP16	0.184806199	0.140875681	0.043541591	0.06142812	6.2931 7E-11	0.235606765
17207	AFAP1L2	0.01409113	0.007564046	0.004458735	0.006156616	7.0537 8E-11	0.316421393
5428	CHL1	0.018546063	0.011856656	0.002350537	0.003175173	7.8944 2E-11	0.12674048
4350	IL1F8	0.064614568	0.063362012	0.038892385	0.001532493	9.8781 3E-11	0.601913558
20255	MIP	0.051944591	0.046186396	0.033770829	0.001336036	1.4235 8E-10	0.65013178
5141	KRT8P30	0.176267139	0.156543595	0.115444866	0.004407998	1.5592 3E-10	0.654942646
19753	PIK3C2G	0.052739415	0.014734853	0.017417412	0.004226772	1.9677 E-10	0.330254168
31134	POM121L9P	0.01210605	0.006496248	0.003835593	0.00527536	2.4067 6E-10	0.316832755
19206	ABCG4	0.152487601	0.038112232	0.051931331	0.026172794	2.5773 3E-10	0.340561007
13019	HYAL4	0.023166342	0.012449463	0.013727672	0.019262627	2.6237 4E-10	0.592569681
9828	C5orf47	0.022119734	0.011885789	0.013106373	0.018383978	3.7801 8E-10	0.592519464
12929	SLC26A3	0.091402057	0.035859283	0.052355205	0.00616368	4.3800	0.572801162

						6E-10	
20528	DCN	0.022233259	0.011946928	0.013933085	0.01955537	5.0540 2E-10	0.62667759
33574	TRNS1	2.675021339	0.570451961	1.407496753	1.350636238	6.3915 1E-10	0.526162813
15462	ROR2	0.090530616	0.035518524	0.037315731	0.007287729	7.3726 3E-10	0.412189079
31806	RDXP2	0.020576648	0.011054835	0.012894625	0.018086765	9.2236 4E-10	0.626663049
28727	CYP2B6	0.023189539	0.014819454	0.005784734	0.008031862	1.6789 8E-09	0.249454478
21446	IRG1	0.043644807	0.027860562	0.02162017	0.03042655	2.3359 9E-09	0.495366383
25761	FLJ45455	0.150096033	0.043535666	0.045836619	0.023106739	3.1264 1E-09	0.305381946
17639	TRIMP1	0.095757513	0.017632767	0.046223195	0.021270188	3.1430 1E-09	0.482710899
29344	NLRP7	0.016353942	0.00878165	0.009686951	0.013548185	3.8091 4E-09	0.592331286
10423	RPL7AP7	0.083449492	0.06354625	0.019626427	0.027606971	3.9033 3E-09	0.235189292
5727	XIRP1	0.064026043	0.065112382	0.007843067	0.003391332	1.5991 4E-08	0.122498074
15815	WDR38	0.059376972	0.045194958	0.013960656	0.019594361	2.0211 8E-08	0.235119034
11052	RPSAP41	0.419131676	0.264139876	0.1750377	0.033886656	2.0982 4E-08	0.417619831
20071	KRT121P	0.023823976	0.011170133	0.008702573	0.002105318	2.4296 6E-08	0.365286318
9559	PCDHGA6	0.012097432	0.006491613	0.007167061	0.009984522	3.3555 6E-08	0.592444845
8627	CDH18	0.075836509	0.011585323	0.042042148	0.010070296	3.3955 9E-08	0.554378736
9342	ADAMTS19	0.042344955	0.006503301	0.023219204	0.003757002	3.4441 6E-08	0.548334591
18892	NOX4	0.011997504	0.00643787	0.007107959	0.009900939	3.5560 1E-08	0.592453157
25538	SPATA22	0.059724147	0.047054241	0.012013298	0.01684038	4.3712 2E-08	0.201146406
30399	C21orf15	0.013602288	0.00870079	0.003405829	0.004667581	4.3791 3E-08	0.250386463
18711	UNC93B6	0.011500708	0.006170703	0.006814174	0.009485465	4.7727 2E-08	0.592500379
22834	IGHA1	0.096921091	0.073819298	0.045382891	0.064032112	5.3928 6E-08	0.468245769
22319	EIF2S2P	0.056356644	0.044404303	0.01133551	0.015881844	5.6771 1E-08	0.201138843
31212	LIF	0.480602525	0.078548157	0.298385157	0.037047927	7.3364 7E-08	0.620856407
31151	PIWIL3	0.067870718	0.027140916	0.014402379	0.006236476	8.3717 3E-08	0.212203133

10538	LTA	0.209135247	0.089398895	0.061193201	0.019508075	1.4176 9E-07	0.292601091
15951	BARHL1	0.04575841	0.036063057	0.009203808	0.012867162	1.4254 7E-07	0.201139149
19559	NANOGP1	0.020646581	0.002815096	0.013373874	0.001554129	1.4626 7E-07	0.647752471
5038	DYTN	0.042577857	0.033559386	0.008092969	0.011293953	1.6250 4E-07	0.19007459
20075	KRT86	0.035722129	0.027171832	0.00840257	0.011734041	2.0533 9E-07	0.235220308
33109	RAB39B	0.020347549	0.013006244	0.010068704	0.01409031	2.1800 5E-07	0.494836206
30053	RPL37AP1	0.998051261	0.151700457	0.588595438	0.211438287	2.6119 2E-07	0.589744696
28208	CYP4F2	0.03168601	0.024097976	0.007043925	0.009810382	2.8746 7E-07	0.222303955
6024	ITIH1	0.075092712	0.023468149	0.028589842	0.023432537	3.4489 4E-07	0.380727252
29396	NLRP5	0.018262555	0.011675722	0.009037435	0.012631875	3.9431 4E-07	0.494861471
22285	C14orf39	0.02710408	0.020609067	0.006380989	0.008875094	6.7556 6E-07	0.23542542
32836	PLAC1	0.380206072	0.076079271	0.194936677	0.070252419	1.2075 9E-06	0.512713213
9614	PPP2R2B	0.114971494	0.024019154	0.059124682	0.02979064	1.2291 2E-06	0.514255143
21024	MRPL3P1	0.044266588	0.033680631	0.019572972	0.02752913	1.3615 8E-06	0.442161303
21955	DHRS4L1	0.386186941	0.092082671	0.211296529	0.181202015	1.5521 5E-06	0.547135355
29169	KLK10	0.061440706	0.028061384	0.025632655	0.006231199	1.5524 4E-06	0.417193362
11957	MACC1	0.021079471	0.017788114	0.001863654	0.002484372	1.5835 E-06	0.088410851
17850	IGSF22	0.146912623	0.05754668	0.038248279	0.016600151	1.8855 7E-06	0.260347123
29165	KLK6	0.060739518	0.053998277	0.009684147	0.013544219	2.2792 6E-06	0.159437329
4882	GULP1	0.077424787	0.01550764	0.048115434	0.039454583	2.5750 9E-06	0.621447413
14259	REXO1L1	0.031339437	0.00975755	0.014744095	0.014189102	3.3657 3E-06	0.470464575
199	RBP7	0.315499643	0.200696929	0.127702841	0.031267435	3.9848 1E-06	0.40476382
21627	GRK1_2	0.102532568	0.091107058	0.034437609	0.048553146	4.4706 6E-06	0.335869957
20118	HIGD1D	0.105293437	0.028595841	0.049525722	0.033408498	8.7459 7E-06	0.470359058
30338	C20orf181	0.011827028	0.004206373	0.005399828	0.001303512	8.8135 1E-06	0.456566772
32777	SMARCA1	0.138794972	0.025208965	0.087530536	0.055577864	1.2034	0.630646305

						3E-05	
485	C1orf130	0.023122274	0.004669834	0.013191649	0.006666157	1.6602 7E-05	0.570516942
30625	KCNJ6	0.036116769	0.007271986	0.020653838	0.010427964	1.6869 1E-05	0.571862831
8455	CCDC110	0.031017155	0.006251718	0.017400158	0.007537912	1.7069 2E-05	0.560984974
13274	TRPV5	0.036102385	0.00726911	0.020270778	0.00878464	1.7162 4E-05	0.561480293
5703	TCEA1P2	0.035776241	0.031937953	0.006345445	0.008822581	1.9544 9E-05	0.177364769
13903	UNC5D	0.19338112	0.045412594	0.096523515	0.022296555	2.5166 9E-05	0.499136189
20578	C12orf55	0.084028889	0.060553316	0.040953749	0.007994034	3.1679 5E-05	0.487377016
10615	HLA-DQA2	0.149870259	0.148463659	0.040579342	0.057238868	3.3752 5E-05	0.270763139
29634	UBE2D3P	0.170520614	0.240988264	0.077242562	0.0566417	4.2519 5E-05	0.452980786
2113	ETV3L	0.202026592	0.092573657	0.051722075	0.026067536	4.3018 3E-05	0.256016173
23816	LMAN1L	0.064725209	0.063470588	0.009545959	0.013348792	4.4565 7E-05	0.147484413
12983	CTTNBP2	0.031156827	0.019543697	0.014145059	0.003429446	5.9643 3E-05	0.453995502
21091	RNF17	0.032247762	0.007579476	0.016520996	0.004008284	6.5395 6E-05	0.512314493
2734	C1orf147	0.071292351	0.010573964	0.047282878	0.011525822	6.5583 E-05	0.663225121
29056	C19orf73	0.200101755	0.218099231	0.022134097	0.031151107	6.7743 6E-05	0.110614206
20894	NIACR1	0.05449939	0.053436128	0.008507148	0.011881936	7.5378 3E-05	0.156096207
22590	FBLN5	0.083680634	0.045099036	0.019498226	0.009845605	0.0001 07704	0.233007634
8637	PRDM9	0.020344158	0.015463193	0.013430519	0.018842389	0.0001 14517	0.66016588
3794	ASPRV1	0.242664376	0.04822086	0.146085537	0.027051102	0.0001 21296	0.602006523
2541	PRG4	0.018716711	0.01669839	0.003333279	0.004562735	0.0001 2271	0.178091037
5180	RPL23P5	0.010309635	0.014415724	0.005379644	0.002324087	0.0001 43658	0.521807417
17225	C10orf134	0.049031602	0.013694087	0.026329901	0.019330886	0.0001 49317	0.536998584
28032	RGL3	0.056482205	0.015785796	0.029536702	0.019911294	0.0001 55971	0.522938199
10708	LHFPL5	0.059425608	0.016612515	0.031084775	0.020956259	0.0001 57438	0.523087203
26273	KRT222P	0.073386409	0.020536252	0.038432946	0.025917209	0.0001 63666	0.523706588

17813	RPL29P21	0.113599343	0.111444082	0.049989022	0.07054392	0.0001 65651	0.440046752
379	PAX7	0.011953999	0.009079627	0.005285539	0.007323648	0.0001 716	0.442156566
2402	RPL26P11	0.012265871	0.009316826	0.005741164	0.007970244	0.0001 8181	0.468060042
11196	EPHA7	0.027725588	0.009892	0.01299133	0.011322718	0.0001 84883	0.468568245
17043	CNNM1	0.015867082	0.014153828	0.002831359	0.003852913	0.0001 90675	0.178442323
11767	C6orf208	0.033575292	0.009170564	0.017411398	0.010026479	0.0001 96417	0.518577711
2217	SLAMF1	0.288563738	0.087427841	0.185033361	0.030578356	0.0002 68562	0.641221804
11212	POU3F2	0.049501596	0.022595014	0.020856148	0.006672757	0.0002 83723	0.421322731
2498	ZNF648	0.028060832	0.039523154	0.018329199	0.0123485	0.00034 7506	0.653195123
29253	ZNF320	0.027181355	0.014612347	0.013743942	0.003331765	0.0003 51068	0.505638586
27795	LSDP5	0.098464109	0.094679974	0.048233073	0.007843459	0.0003 84588	0.489854357
29388	NLRP9	0.045875438	0.018039224	0.024182018	0.00587702	0.0003 94658	0.527123432
21038	GJB2	0.157784418	0.061790569	0.058229331	0.022614831	0.0004 08913	0.369043608
19599	KLRG1	0.299198133	0.052873463	0.197997168	0.073369235	0.0004 52965	0.661759372
16262	MRC1	0.028569141	0.012139554	0.009775399	0.004229061	0.0005 30046	0.342166366
11264	SCML4	0.032527958	0.01382714	0.011137731	0.004819915	0.0005 37415	0.342404848
10446	HCP5P3	0.302683348	0.063638742	0.181496058	0.043183902	0.0005 90425	0.599623531
11352	FAM26F	0.385977456	0.077242159	0.254207764	0.139457191	0.0005 9728	0.658607803
30193	RPSAP1	0.138838364	0.059276286	0.047910749	0.020804737	0.0006 26092	0.34508293
28485	RPL29P33	0.233885274	0.100012272	0.080936092	0.035188782	0.0006 6093	0.346050399
8894	RPL21P55	0.263881662	0.112879879	0.092991218	0.046813379	0.0006 64942	0.352397424
2979	HIST3H2A	0.823265823	0.219034155	0.435787615	0.126365816	0.0007 81696	0.529340102
32557	ELF2P1	0.057038271	0.04760301	0.01714101	0.007425385	0.0010 44799	0.300517709
17034	CRTAC1	0.161457028	0.116239812	0.052121093	0.022637497	0.0011 69338	0.322817123
21183	SOHLH2	0.106000234	0.098342951	0.055839528	0.009089447	0.0015 35964	0.526786841
9297	ZNF474	0.067117953	0.069991467	0.025224788	0.035522005	0.0016	0.375827737

						52936	
16157	CALML3	0.148823173	0.045222392	0.076973976	0.033462236	0.0016 91419	0.517217677
16655	DNAJC12	0.133714324	0.125893732	0.033512359	0.016904234	0.0018 91837	0.250626549
32877	GPR112	0.010658653	0.0094915	0.003584826	0.004920722	0.0022 69014	0.33633016
22187	GNG2	0.034256841	0.035708658	0.008599512	0.012010313	0.0026 22308	0.251030501
13380	ARP11	0.185673669	0.11684212	0.08596945	0.02737546	0.0027 61741	0.463013688
25983	RPL34P31	0.767832156	0.183805027	0.486157288	0.243950891	0.0028 57239	0.633155676
20322	LRIG3	0.083385397	0.025069214	0.045185536	0.01898613	0.0032 2864	0.541887879
29402	RPL13P13	0.308677245	0.163681909	0.193012556	0.037345732	0.0034 03256	0.625289228
24683	CDC37P1	0.238138008	0.071930713	0.129719621	0.054365686	0.0036 767	0.544724558
2260	FCGR3A	0.108930522	0.064031404	0.04181384	0.018151431	0.0040 30849	0.383857884
31175	MIAT	0.030264571	0.008270558	0.018564074	0.010587998	0.0043 19811	0.613392953
28402	ZNF492	0.116729417	0.033241468	0.065573607	0.020679139	0.0043 95702	0.561757338
23602	AQP9	0.227184901	0.084946028	0.106578136	0.043272913	0.0048 05837	0.469125085
10876	RCAN2	0.051797311	0.056705819	0.01578639	0.022176338	0.0050 27349	0.304772378
28569	COX7A1	0.261299717	0.119818883	0.129964124	0.119331283	0.0064 35082	0.497375678
2193	IGSF9	0.303574241	0.072657962	0.191803312	0.053938505	0.0065 29115	0.631816823
1172	RPL29P5	0.195700243	0.103881811	0.080547362	0.035019379	0.0066 97658	0.411585398
14205	ZFHX4	0.010486979	0.002880916	0.006201326	0.001992077	0.0067 8756	0.591335797
28046	VN2R12P	0.394156722	0.263391868	0.154683087	0.067353764	0.0069 57319	0.392440565
23862	KRT8P23	0.089608851	0.024355813	0.053610819	0.01709841	0.0074 27943	0.598275937
11971	MGC87042	0.117007668	0.045867377	0.062678732	0.019980052	0.0077 87218	0.535680552
17181	ADRA2A	0.059785701	0.014630766	0.038896804	0.016882283	0.0079 28686	0.650603789
30716	AIRE	0.158700959	0.079338447	0.061725893	0.037589788	0.0079 77877	0.388944674
5871	CAMP	0.630692949	0.222343777	0.347405547	0.218191286	0.0081 17353	0.550831506
30241	CTCF	0.056618851	0.017278161	0.033854813	0.019328168	0.0082 24188	0.597942434

5354	ESPNL	0.050924188	0.020345173	0.025015817	0.014274754	0.0090 40407	0.491236444
16588	ASAH2	0.007206174	0.010030213	0.020838411	0.009031218	0	2.891744243
23646	MGC15885	0.004912768	0.006783403	0.010555942	0.002555904	0	2.148674825
9566	PCDHGA10	0.003735151	0.005121446	0.010673812	0.004618689	2.5979 2E-14	2.857665176
9547	PCDHB19P	0.004261022	0.005861694	0.010907857	0.004720204	9.9920 1E-14	2.559915934
24246	SOX8	0.006419588	0.008914368	0.011153523	0.000455117	0	1.737420244
17800	INSC	0.005794817	0.008034252	0.011260145	0.000459347	0	1.943140936
25613	WSCD1	0.006349292	0.000499358	0.01168185	0.000476068	0	1.839866618
17234	EMX2	0.006037792	0.008377871	0.011740078	0.000478376	0	1.944432508
152	HES2	0.004137872	0.005690979	0.01185066	0.005129187	7.1054 3E-15	2.863950439
17872	SLC6A5	0.006829109	0.009493518	0.01187479	0.000483713	0	1.738849045
6705	AGTR1	0.007590964	0.010570943	0.013217107	0.000536804	0	1.741163204
6344	TMPRSS7	0.006949624	0.009667396	0.013542238	0.000549639	0	1.948628914
10186	NRSN1	0.00809622	0.011285484	0.014107656	0.000571941	0	1.742498979
19261	SCN3B	0.005770488	0.007999847	0.014222823	0.01239514	0.0014 81483	2.46475229
22106	MIA2	0.008539702	0.011912661	0.014889526	0.000602737	0	1.743565038
23905	ANKRD34C	0.007871449	0.010971055	0.015365706	0.000621471	0	1.952080863
16259	FAM23A	0.007150847	0.009948523	0.015621092	0.005002653	0	2.18450945
1891	RORC	0.006095812	0.008456479	0.015696206	0.006798099	1.1102 2E-15	2.574916267
23800	GOLGA6	0.005515948	0.007639873	0.015883213	0.006879283	2.2204 5E-16	2.879507139
16700	COL13A1	0.006196144	0.00859837	0.015958266	0.006911867	8.8817 8E-16	2.57551558
2107	INSRR	0.004747979	0.006550356	0.016136505	0.010869484	4.7609 1E-07	3.398604599
6744	CLRN1	0.006159793	0.008546962	0.016158704	0.008162292	1.0691 4E-11	2.623254288
7264	C4orf50	0.00551255	0.007635067	0.016168825	0.008167394	3.0224 7E-12	2.933093662
8715	LIFR	0.008751261	0.00177917	0.016316953	0.000658845	0	1.864526034
3427	KCNK3	0.009256435	0.000732903	0.016819194	0.011329945	4.9548 7E-17	1.817027236
6025	ITIH3	0.005763044	0.007989319	0.016915871	0.008544002	1.9475 5E-12	2.93523206
13505	DLGAP2	0.001795956	0.00237901	0.016992226	0.010145797	1.2350 1E-12	9.461381384
32585	CLDN2	0.005911813	0.008199711	0.017042945	0.007382805	0	2.88286245
21650	POTEG	0.010088034	0.014102333	0.017620633	0.000709965	0	1.746686507
32156	ITIH5L	0.004214772	0.005796287	0.017795594	0.014579167	4.7026 3E-05	4.222195817
13907	KCNU1	0.009834344	0.000779497	0.017875494	0.012042448	5.0901 9E-17	1.81766008
6897	FLJ23172	0.009222294	0.012881438	0.018040273	0.000726397	0	1.956158906
20599	DNM1P19	0.006320263	0.008777346	0.018240094	0.007902655	0	2.88597068

29994	BPI	0.0105244	0.014719449	0.01839069	0.000740109	0	1.747433482
21080	C1QTNF9	0.009495334	0.013267574	0.01858119	0.000747561	0	1.956875909
769	OXCT2P	0.01075427	0.015044533	0.018796398	0.000755976	0	1.747807918
15959	GFI1B	0.009677769	0.013525577	0.018942668	0.000761695	0	1.957338232
6406	C3orf15	0.003982118	0.00547071	0.019024971	0.004618717	0	4.777600773
28199	CYP4F12	0.011245844	0.015739724	0.01966413	0.00078988	0	1.748568644
31500	PNPLA5	0.006963238	0.00968665	0.020125672	0.008721609	0	2.890274759
28721	CYP2F1P	0.008828819	0.005651691	0.020823691	0.005057444	3.3596 9E-08	2.358604345
18890	GRM5	0.007009768	0.003756902	0.02083348	0.011026109	0.0055 28019	2.97206408
11018	MCART3P	0.01078	0.015084367	0.021127536	0.000846962	0	1.959882674
20606	SLC17A8	0.009244928	0.000731976	0.02139817	0.006845587	7.4282 3E-48	2.31458485
32519	NXF2	0.014323092	0.007688844	0.021552584	0.005235278	0.0065 76976	1.504743799
9662	MYOZ3	0.005131272	0.007092414	0.022243167	0.007114996	0	4.334825034
13816	EBF2	0.008481143	0.011829846	0.022335958	0.011275539	4.583E- 13	2.633602453
10808	PRPH2	0.012132144	0.000965207	0.022398943	0.000896462	0	1.846247731
13208	WEE2	0.011296195	0.015814376	0.022442208	0.016479562	1.5699 5E-05	1.98670516
6260	FILIP1L	0.008265301	0.000653112	0.022587503	0.009791113	1.0590 8E-65	2.732810879
31562	IL17REL	0.01012096	0.000802624	0.023181723	0.005632849	8.4595 3E-48	2.290466749
12979	WNT2	0.012627966	0.001005365	0.023319348	0.000932245	0	1.846643185
25549	GSG2	0.013832236	0.019397434	0.023886627	0.016098064	2.0348 2E-06	1.726881099
6391	UPK1B	0.00844216	0.011778161	0.024467024	0.010607827	0	2.89819489
25236	MARVELD3	0.016531055	0.008876969	0.024893491	0.006050717	0.0065 23738	1.505862254
10790	PGC	0.01274448	0.01786256	0.02502506	0.000998453	0	1.963599997
17001	DNTT	0.009532348	0.013316475	0.025135742	0.012686005	1.3833 4E-13	2.636888895
14480	ENPP2	0.015404532	0.021624443	0.025137576	0.006110313	0	1.63182987
1557	CASQ2	0.013576349	0.001082251	0.025408581	0.018655214	6.6863 9E-17	1.871532672
26669	RNF126P1	0.014665874	0.020576376	0.025705502	0.001024827	0	1.752742593
21400	LGMN2P	0.008901422	0.012427656	0.025816269	0.01119421	0	2.900241004
10780	TREML3	0.005592972	0.007748801	0.026893144	0.006539025	0	4.808382015
30679	UBASH3A	0.013831829	0.019400304	0.027538929	0.020217516	6.8276 7E-06	1.990982522
21498	DCT	0.015248155	0.001218009	0.028186301	0.001120818	0	1.848505747
2293	LMX1A	0.014646895	0.005781231	0.02833719	0.039925851	1.0093 1E-09	1.934689266
22641	GSC	0.01448489	0.020323872	0.028481294	0.001132216	0	1.966276211
2519	LAMC2	0.011302372	0.000898067	0.028848108	0.012134697	1.1191 8E-56	2.552394169
19060	C11orf87	0.015667881	0.001252134	0.028966374	0.00115095	0	1.848774148



14118	TRIM55	0.006126954	0.008503965	0.029158736	0.023899237	5.5389 9E-06	4.759091954
21554	NALCN	0.013097038	0.002655394	0.029210681	0.005720954	8.4120 4E-09	2.230327258
3431	DPYSL5	0.010783154	0.005784861	0.029338989	0.00573765	1.5765 2E-14	2.720816911
3352	NT5C1B	0.012068956	0.016907226	0.029412562	0.007154487	0	2.437042803
14880	DMRTA1	0.01676533	0.023545456	0.029417326	0.001168359	0	1.754652355
2322	DUSP27	0.004365967	0.006013554	0.029707445	0.018891638	1.1188 2E-11	6.80432161
511	EXTL1	0.018220193	0.001459972	0.029847351	0.018980482	1.5985 9E-11	1.638146815
371	PADI4	0.016167842	0.001292803	0.029895709	0.001186817	0	1.849084674
17383	CYP2E1	0.011631603	0.01628527	0.030730638	0.015503694	1.7097 4E-14	2.641994962
19474	GALNT8	0.017142405	0.001372141	0.030794544	0.043398829	0	1.796395801
8043	NDST3	0.015223415	0.003083348	0.031068708	0.010781466	1.5607 6E-06	2.040850065
31651	VCX3B	0.01585222	0.022257569	0.031198533	0.001237045	0	1.968086059
25104	CMTM2	0.018135728	0.025483492	0.031841307	0.001261803	0	1.75572254
11143	HTR1E	0.017863365	0.001430883	0.032095565	0.04523875	0	1.796725594
736	DNALI1	0.013023978	0.018257831	0.032113353	0.010259638	0	2.465709986
13731	FGL1	0.011113977	0.015556681	0.032322603	0.014022814	0	2.908284168
6123	LMOD3	0.009488819	0.013254916	0.032557399	0.021950357	1.1326 1E-08	3.431132856
8462	FLJ38576	0.011191847	0.015666806	0.032856834	0.001300888	0	2.935782974
31152	TOP1P2	0.011365633	0.015912577	0.033063222	0.014344885	0	2.909052289
6315	MYH15	0.017949024	0.0021707	0.033220427	0.012147334	9.0622 3E-12	1.850820763
25480	TUSC5	0.020321301	0.001631449	0.033307481	0.021177569	1.6261 1E-11	1.639042794
2147	SPTA1	0.008664574	0.012092703	0.03353338	0.010551015	0	3.870170521
12910	FLJ23834	0.019517696	0.002358121	0.033622669	0.009656927	7.872E- 10	1.722676094
25971	FLJ36000	0.022169041	0.001045136	0.033905127	0.00662522	1.1221 5E-35	1.529390749
21159	C13orf26	0.019302402	0.027133417	0.033905577	0.001341216	0	1.756547065
21236	OR7E36P	0.017264834	0.024255307	0.034007347	0.001345127	0	1.969746515
17185	TECTB	0.017350802	0.024376883	0.034178332	0.001351698	0	1.96984166
10204	NUP50P2	0.019280926	0.001546501	0.034654582	0.048857747	0	1.797350498
28244	USHBP1	0.016023088	0.022495767	0.034903069	0.008496539	0	2.178298563
8524	SLC6A3	0.018633856	0.001493707	0.034928629	0.0256358	7.6677 8E-17	1.874471333
4189	C2orf15	0.01353147	0.018972087	0.035158124	0.01525598	0	2.598248731
30473	HSPD1P7	0.015595226	0.001246226	0.035805492	0.008717214	2.3166 4E-47	2.29592651
26540	SP6	0.019270861	0.00154568	0.035902894	0.013961821	7.4238 2E-25	1.863066376
33020	PNMA3	0.024025328	0.004850945	0.036073954	0.001424482	0	1.501496855
18428	METTLL12	0.012490172	0.017502916	0.036374024	0.015784847	0	2.912211496

19606	PZP	0.023740811	0.001911165	0.036687408	0.001448012	0	1.545330847
24589	NCRNA00169	0.012296786	0.001909713	0.037095541	0.00255936	0	3.016685861
33513	DNM1P26	0.022885845	0.022424814	0.037434596	0.003323153	0	1.635709593
28481	RPS4P21	0.019250483	0.027063439	0.037958047	0.001496713	0	1.971797103
23563	BCL2L10	0.019336101	0.027184521	0.038128456	0.00150324	0	1.971879202
13055	FAM71F1	0.011291025	0.01580362	0.038811693	0.026172947	4.1515 7E-09	3.437393184
12949	RPL7AP42	0.022309816	0.031386544	0.039229257	0.001545387	0	1.75838545
21448	DHX9P	0.021340237	0.004312293	0.039540931	0.020951471	0.0001 26729	1.852881558
14321	CDH17	0.020244885	0.02846629	0.039878436	0.00468271	0	1.969803078
6908	SPATA16	0.017582836	0.001408021	0.039925632	0.032733408	1.3928 7E-27	2.270716309
25933	LGALS9B	0.013864715	0.019446812	0.041156011	0.02075154	2.2204 5E-16	2.968399382
24370	ZSCAN10	0.013992256	0.019627182	0.041179361	0.001619968	0	2.94301093
9722	SOX30	0.021691732	0.013863895	0.041417922	0.001629084	0	1.909387509
11366	ROS1	0.005027739	0.000393772	0.041538566	0.014543745	0	8.261877939
18654	TBX10	0.023568689	0.001897068	0.042401714	0.059813847	0	1.799069715
288	LRRC38	0.022803986	0.008987763	0.043095648	0.001693154	0	1.889829585
25212	CLEC18C	0.018563606	0.001487977	0.043122752	0.013763396	3.7520 7E-47	2.322972812
9830	HMP19	0.008345266	0.011637687	0.04380451	0.022084279	0	5.249025057
6136	CCDC137P	0.022203169	0.031239167	0.043837566	0.001721463	0	1.97438332
17141	CALHM1	0.023874148	0.001922087	0.044237416	0.001736714	0	1.852942163
11038	B3GAT2	0.0178395	0.025068007	0.044565429	0.038803131	6.8022 2E-05	2.498132246
23245	SYNGR2P1	0.015418136	0.021643681	0.04500335	0.019539365	0	2.918858047
10297	GPR89P	0.018099117	0.025435161	0.045219953	0.039372565	6.5136 1E-05	2.498461839
32362	BRAFPS2	0.01666767	0.008950495	0.045707479	0.023041765	0.0062 88515	2.742283711
7412	ATP5LP3	0.024084467	0.033899725	0.047586361	0.001864294	0	1.975811217
29294	CACNG8	0.027083911	0.038138133	0.047686657	0.001868111	0	1.760700577
2095	HAPLN2	0.009785238	0.01367756	0.047944658	0.015296977	0	4.899692653
3389	C2orf84	0.028849279	0.040638185	0.04833928	0.042086284	0.0001 69146	1.675580212
21705	KLHL33	0.025096382	0.035330788	0.049603554	0.001941011	0	1.976522114
22798	C14orf151	0.02276681	0.03203283	0.049726223	0.012124149	0	2.1841542
33106	MTCP1	0.029405751	0.041425156	0.05111474	0.012240328	0	1.739367267
29051	NTF4	0.017196677	0.024158918	0.051155241	0.025782409	0	2.974716661
12746	KPNA7	0.032981542	0.017738144	0.051368738	0.072497378	2.6503 8E-08	1.557499605
7502	GRXCR1	0.017333539	0.024352471	0.051566239	0.025989149	0	2.974939973
10453	HCP5P2	0.016146665	0.00129108	0.051916774	0.00844672	0	3.21532493
654	LCK	0.015411331	0.021634058	0.052726944	0.008579437	0	3.421310235
8699	RANBP3L	0.029506688	0.022438443	0.053263764	0.002079983	0	1.805142056
18993	C11orf70	0.028874988	0.002332417	0.053558114	0.002091146	0	1.854827212
1670	HFE2	0.032835438	0.002658258	0.05356063	0.012815156	9.3048 E-17	1.631183686

11935	SOSTDC1	0.010391181	0.014531048	0.053703878	0.023326574	0	5.168216932
115	MMEL1	0.026933523	0.037925453	0.053780983	0.027103152	8.8817 8E-16	1.996804586
19654	TAS2R10	0.018572273	0.026104304	0.054311569	0.023591149	0	2.924336184
26963	PRCD	0.018318146	0.025744914	0.054523591	0.027476659	0	2.976479836
6751	P2RY12	0.023705168	0.001908246	0.054550959	0.013306009	6.0303 4E-47	2.301226428
15380	RPS2P34	0.018395588	0.025854435	0.054756239	0.027593672	0	2.976596257
11427	C6orf58	0.01608902	0.022589009	0.055484314	0.037433443	4.9591 2E-10	3.448582617
30630	KCNJ15	0.018527949	0.009951825	0.055667481	0.013579578	2.4832 6E-11	3.004513885
22399	ADAM21P	0.035468619	0.002875277	0.056979032	0.032557959	1.6249 3E-11	1.606463203
28507	FXD3	0.016594457	0.023303806	0.057242211	0.038620985	4.0978 3E-10	3.449477698
25942	CDRT15L2	0.024562506	0.034575774	0.057599917	0.059120929	0.0021 66416	2.345034194
20145	HOXC11	0.026303251	0.010362048	0.057777202	0.009407041	1.2820 9E-12	2.19658021
2227	ITLN2	0.014968812	0.021008242	0.057886648	0.039056345	1.6406 7E-10	3.867150421
1385	OLFM3	0.027175302	0.024253439	0.058237612	0.011450166	6.3704 6E-13	2.1430346
17328	ADAM12	0.033371069	0.008193186	0.058246129	0.015866175	0.0016 03393	1.745407947
12432	EEF1DP4	0.026803306	0.037741298	0.058608835	0.014300382	0	2.186627044
14092	NASPP1	0.027226443	0.038339703	0.059204689	0.031393722	5.1070 3E-15	2.174528978
25659	TNK1	0.030906816	0.02437003	0.059528	0.002317178	0	1.926047651
29804	VSX1	0.017438977	0.024498137	0.060613777	0.019109933	0	3.475764456
18365	MS4A15	0.017534174	0.024636212	0.060962152	0.038727936	8.0491 2E-12	3.476762008
22136	RPL10L	0.023638749	0.033265939	0.061693598	0.026805651	0	2.609850339
16469	TMEM72	0.033509641	0.002713796	0.062204081	0.002418278	0	1.856303999
1614	NBPF7	0.019371986	0.001553933	0.062349206	0.010156696	0	3.218524225
25982	TUFML	0.012240174	0.017145919	0.063362279	0.027532406	0	5.176583339
7545	SPATA18	0.025435065	0.002050019	0.063578912	0.046632358	1.3478 5E-40	2.499655967
21992	CMA1	0.02450315	0.034488385	0.063965863	0.027795294	0	2.610515955
30612	PSMD15	0.023418886	0.001884801	0.064966239	0.002522494	0	2.774096055
9899	FAM153C	0.040169386	0.003263371	0.065592813	0.015679529	1.0125 4E-16	1.632905544
31262	C22orf24	0.029195984	0.002358799	0.065660775	0.092707126	0	2.248966025
8460	TLR3	0.028834127	0.022737661	0.066851408	0.018200282	2.3168 2E-07	2.318482121
11162	SPACA1	0.024331471	0.001959554	0.067511635	0.002618415	0	2.774663136
28006	AP1M2	0.041441333	0.00336852	0.067680824	0.016176341	1.0258 E-16	1.633171961
20673	BTBD11	0.04544559	0.009135886	0.068628258	0.0106887	0.0001	1.510119208

						66773	
4229	IL18RAP	0.0209204	0.011239934	0.069697156	0.011593419	0	3.331540306
19722	PLBD1	0.038633603	0.029389459	0.069830642	0.002705711	0	1.807510461
12264	CDC14C	0.036913164	0.014525502	0.070255267	0.019123209	0.0006 45173	1.903257809
25138	LRRC36	0.037491205	0.007546789	0.070469747	0.002729754	0	1.879634078
20986	P2RX2	0.009093986	0.012699983	0.071601365	0.05250949	6.3129 7E-11	7.873484873
2224	ITLN1	0.016330973	0.022931183	0.072404634	0.063018218	2.4906 8E-06	4.43357736
19677	PS5	0.041391642	0.058372321	0.073068988	0.00282747	0	1.765307766
9724	C5orf52	0.024527727	0.034526589	0.07319537	0.036864992	0	2.984188833
17305	OATL3	0.036969398	0.052121768	0.07330619	0.002836382	0	1.982888374
31489	RPS25P10	0.04197687	0.059199957	0.074108133	0.002866507	0	1.76545163
28041	CNN1	0.033697691	0.013264194	0.074126059	0.012089355	1.2869 7E-12	2.199737057
17338	CLRN3	0.031825416	0.002575092	0.074136653	0.023619217	1.2673 9E-46	2.329479432
3319	RPL6P4	0.037615595	0.05303563	0.074597796	0.002884896	0	1.983161365
20465	RWDD1L1	0.042438497	0.059852797	0.074927857	0.002897289	0	1.765563374
21540	GPR183	0.039431848	0.025175725	0.075044772	0.023676744	0.0012 56519	1.903151257
15522	NCRNA00092	0.027505035	0.014786746	0.075182809	0.014625118	8.6597 4E-15	2.733419811
19962	OR8T1P	0.032616721	0.002640245	0.075190473	0.018366656	1.2350 8E-46	2.30527385
5085	VWC2L	0.039972247	0.003247079	0.075210693	0.055153384	1.059E- 16	1.881572786
6909	NLGN1	0.03947439	0.022542837	0.075230644	0.006737113	0	1.905808924
4794	RPS15AP14	0.03803115	0.053623313	0.075428473	0.002916083	0	1.983334001
10920	RPS15AP20	0.042910453	0.060520243	0.07576596	0.002928751	0	1.76567608
1376	VCAM1	0.040599286	0.004863568	0.075791427	0.012362828	2.5712 E-13	1.866816737
29904	RPL31P2	0.038628707	0.054468385	0.076623067	0.002960915	0	1.983578375
4979	PFTK2	0.033301695	0.046934852	0.076627679	0.012500166	0	2.301014422
5247	SPATA3	0.043886765	0.061900957	0.077499834	0.002993807	0	1.765904463
19003	MMP8	0.023159498	0.01480029	0.077509945	0.018514126	1.7319 5E-14	3.346788703
2578	CFHR1	0.042742259	0.023001013	0.077975717	0.003011654	0	1.824323719
4466	TUBA3E	0.037252979	0.052519368	0.07797724	0.080023786	0.0015 86392	2.0931813
4910	SDPR	0.039765863	0.011094966	0.078631209	0.010398288	1.0502 7E-13	1.977354511
12909	RPL13AP16	0.026848245	0.037808297	0.078781679	0.034249942	0	2.93433254
27197	CCDC58P1	0.026848245	0.037808297	0.078781679	0.034249942	0	2.93433254
15172	FAM27A	0.030491728	0.042957515	0.07894022	0.072456276	5.5913 1E-05	2.588906047
29566	PDYN	0.03593038	0.012831617	0.07944197	0.021613236	3.3931 E-05	2.210997176
32434	CAPZA1P	0.040111895	0.035812341	0.079889836	0.033521616	0.0033	1.991674454

						60117	
22074	NUTF2P2	0.042573065	0.003462123	0.08012934	0.05875615	1.0871 4E-16	1.8821605
559	FCN3	0.037062451	0.05224992	0.080284051	0.065863413	2.7922 9E-06	2.166182979
22142	ATP5GP2	0.05433739	0.076683818	0.081846074	0.04121297	2.2204 5E-16	1.506257015
25277	FA2H	0.051870663	0.006196025	0.082337572	0.055578624	7.0961 3E-05	1.58736302
31453	SLC25A5P1	0.021395691	0.030097221	0.083630666	0.026395271	0	3.908762109
10557	LY6G6D	0.042233612	0.059566492	0.083832201	0.003231038	0	1.984964028
15646	RPL36AP6	0.047686474	0.067274558	0.084249485	0.003246651	0	1.766737545
22388	C14orf162	0.038452915	0.015129356	0.084651054	0.013818346	1.2894 1E-12	2.201421001
8314	PSME2P3	0.021703328	0.030532285	0.085418781	0.00329039	0	3.93574576
11701	PLG	0.013341674	0.001063217	0.085774387	0.003303689	0	6.429057395
11886	OR7E39P	0.037365168	0.003031756	0.087962684	0.076547399	3.7346 E-27	2.354135927
17183	RPS6P15	0.025072444	0.03529349	0.087971944	0.003385833	0	3.508710302
29240	ZNF534	0.053955725	0.052902675	0.088180366	0.030697386	0.0017 25737	1.634309724
30680	RSPH1	0.051348461	0.032768796	0.088354911	0.124803725	1.1763 7E-06	1.720692501
14163	XKR9	0.016250904	0.022821393	0.089208118	0.04885005	0	5.489424913
1368	BRI3P1	0.051581804	0.072783386	0.089918735	0.060702844	1.7318 9E-09	1.743225865
29141	ASPDH	0.059142976	0.045016618	0.091063607	0.128632155	5.5761 6E-05	1.539719733
10521	HLA-S	0.020941484	0.029451429	0.091150756	0.022284358	0	4.352640724
13372	SSPO	0.052209316	0.002639484	0.09192074	0.005054273	0	1.760619483
2558	RGS18	0.060413656	0.040246778	0.093799748	0.0184913	7.504E- 05	1.552624927
9110	RPS3AP22	0.019866383	0.027934452	0.09703922	0.023730574	0	4.884594288
27830	FUT3	0.055869017	0.004564711	0.097691737	0.012895274	6.9268 9E-22	1.748585219
30614	SIM2	0.035750984	0.017549897	0.098199062	0.010564787	0	2.746751334
8328	RPL35AP12	0.050125826	0.070727768	0.099628526	0.003820558	0	1.987568744
221	PTCHD2	0.065602561	0.000541488	0.099848155	0.0098014	0	1.52201613
16530	FAM25G	0.056838798	0.080217898	0.100516717	0.003853617	0	1.768452543
11421	YWHAZP4	0.032852186	0.029223272	0.101409052	0.055961819	0.0016 54732	3.086828119
2779	ADORA2BP	0.014843791	0.020827989	0.102020993	0.068884068	8.3932 9E-14	6.872974468
7718	CXCL3	0.062357248	0.005104451	0.102058109	0.024347098	1.2146 6E-16	1.636667926
10967	RPSAP44	0.03414818	0.048131964	0.1021793	0.051429374	0	2.992232665
31269	RFPL2	0.022922026	0.032255784	0.102349588	0.051514917	0	4.465119704
14011	RPL29P19	0.026040127	0.036665446	0.102652204	0.003933066	0	3.942077663
26000	FLJ40504	0.059292877	0.083688489	0.104880615	0.00401592	0	1.768856927
16066	CLIC3	0.023638749	0.033265939	0.105073086	0.091424275	6.638E-	4.44495114

						07	
1847	HORMAD1	0.04763206	0.009572338	0.107953963	0.029334496	1.5258 7E-08	2.266413905
22208	ATP5C2	0.066811204	0.00547552	0.109387241	0.026087267	1.2494 7E-16	1.637258936
14144	RPS15AP25	0.072706119	0.102661124	0.109739464	0.055226908	0	1.509356641
16024	LHX3	0.028242967	0.002280486	0.110413265	0.023323578	0	3.909407419
2938	C1orf95	0.061285773	0.007306363	0.111750234	0.044762514	2.8060 7E-11	1.82342864
20139	RPL31P51	0.043006113	0.060655528	0.114658794	0.057697653	0	2.666104527
13428	CRYGN	0.023657063	0.033295284	0.115741326	0.028326319	0	4.892463901
9051	RPL7AP32	0.019686393	0.027679908	0.116885997	0.058816202	0	5.937400438
11863	RSPH10B	0.076812348	0.090963338	0.11799716	0.056477895	0.0057 8018	1.536174375
12854	PMS2L12	0.072462809	0.102313586	0.118946302	0.00836178	0	1.641480692
12841	MOGAT3	0.064788731	0.023188036	0.119927703	0.038146304	0.0064 86247	1.851058059
16860	C10orf99	0.020694506	0.029105595	0.121898419	0.004646972	0	5.890375926
1594	RPL6P2	0.066909523	0.036042345	0.122339701	0.004663299	0	1.828434811
16207	RPL5P25	0.040636304	0.057307556	0.122710203	0.117934154	4.2955 1E-05	3.019718625
6691	RPL21P39	0.035693659	0.050314155	0.123811849	0.083617913	2.7893 2E-12	3.468735175
15304	RPL24P8	0.065668361	0.005380266	0.123864063	0.090781037	1.2995 8E-16	1.886206095
27897	RPL21P129	0.034983304	0.049309562	0.124540082	0.09127594	2.7944 7E-10	3.559986259
18513	PYGM	0.069285139	0.008248131	0.130697789	0.031144142	1.4354 1E-13	1.886375504
31100	C22orf43	0.067944165	0.053521937	0.130784561	0.032025376	2.3730 7E-06	1.92488289
28480	RPS4P20	0.081357555	0.006690185	0.132354575	0.021670943	1.3102 5E-16	1.626825866
29099	FUZ	0.034271177	0.018433321	0.134575695	0.009479115	0	3.9267894
16561	PGBD3	0.084829763	0.053307181	0.138919673	0.016505889	1.0722 5E-12	1.637628917
30274	MTCO2L	0.070747266	0.099890888	0.140972821	0.005351125	0	1.992625702
30074	MATN4	0.08647876	0.026341145	0.141572703	0.00512479	0	1.637080627
11336	RPSAP43	0.060849739	0.004978956	0.142225705	0.045212938	5.2674 1E-46	2.337326459
13302	CTAGE6	0.061490721	0.014507102	0.145065544	0.003382244	0	2.359145257
20563	RPL14P4	0.049191242	0.069406066	0.146370168	0.005549831	0	2.975533063
884	RPS15AP11	0.078211308	0.006427129	0.147650449	0.108192973	1.3953 7E-16	1.88784017
32918	RPL36AP52	0.070463762	0.037961311	0.150795742	0.035909774	1.2233 E-06	2.140046709
19637	C12orf59	0.097131515	0.01701315	0.15080082	0.014190637	2.3279 2E-11	1.552542647
23952	DNM1P39	0.097334648	0.022561454	0.153339971	0.008602037	0	1.575389392
3109	RPS11P2	0.094300469	0.133200147	0.156210158	0.038281592	0	1.656515178

15501	CYCSP24	0.060221793	0.085002175	0.158095049	0.068842942	0	2.625213254
31694	UBE2E4P	0.094937943	0.051180511	0.159086592	0.014379866	0	1.675690307
20633	C12orf42	0.088319727	0.058874203	0.160885498	0.006083131	0	1.821625852
4745	MRPS29P2	0.033067549	0.04660372	0.16393462	0.052089277	0	4.957567954
12273	DDC	0.100393083	0.015297514	0.16754284	0.106284425	0.0001 76646	1.66886837
7230	DOK7	0.049807438	0.01391183	0.169853841	0.012008291	0	3.410210373
8446	HELT	0.075379915	0.057393649	0.171561978	0.054504507	2.2953 4E-05	2.275964052
9551	PCDHGA1	0.096430829	0.002557394	0.172313454	0.044289196	1.5635 E-198	1.786912504
14227	CKS1A	0.049845874	0.070328411	0.175628055	0.006623274	0	3.523422099
27756	C19orf71	0.103848721	0.066190447	0.175841459	0.041844559	0.0002 29819	1.693246266
30405	LIPI	0.061978887	0.087490526	0.176304681	0.107749334	4.4408 9E-16	2.844592577
23910	RPS12P25	0.049653105	0.070055794	0.177100184	0.129746219	3.5627 3E-11	3.566749418
3756	RPS15AP15	0.094951293	0.007828636	0.177242671	0.006682345	0	1.86666937
8325	NPY1R	0.104250551	0.008609035	0.177295389	0.049502943	1.7461 7E-18	1.700666206
1439	SYPL2	0.043462024	0.010233041	0.181131213	0.049447593	2.5816 8E-17	4.167574301
17273	RPS15AP5	0.114494881	0.044885593	0.181168829	0.044427323	0.0057 6595	1.582331248
3114	RPLP1P2	0.114988724	0.04507855	0.181954826	0.044620928	0.0057 64552	1.582371036
28785	CEACAM1	0.120152754	0.060114266	0.182710654	0.02039357	1.0258 4E-09	1.52065306
11292	C6orf224	0.101071579	0.043110854	0.184817363	0.058487829	0.0059 93776	1.828578953
13523	XKR5	0.109576768	0.014318761	0.186476052	0.007853053	0	1.701784565
19826	RPL29P27	0.030660647	0.043196402	0.190034426	0.120530971	0	6.197991339
26826	RPL17P41	0.116603059	0.009647453	0.191466579	0.045545045	1.5652 E-16	1.642037366
3904	RPL38P2	0.055207306	0.07791062	0.194628311	0.007317378	0	3.525408585
29570	TGM6	0.056574027	0.037684795	0.198659702	0.058981357	1.8087 3E-10	3.511500129
254	HNRNPCL1	0.112510467	0.013317573	0.198824811	0.114040681	8.5323 E-09	1.767167239
9469	MGC29506	0.130138625	0.010787433	0.199640797	0.163916639	0.0001 34046	1.534062589
20302	RPL13AP23	0.090290294	0.035424549	0.199752912	0.032797407	1.3058 4E-12	2.212340913
24829	CSDAP1	0.110553093	0.033637593	0.200250955	0.005910813	0	1.811355515
8161	RPS23P2	0.038387936	0.054124438	0.200433813	0.087327802	0	5.221270936
25378	RPL39P30	0.088913227	0.007322596	0.208228565	0.066110316	1.1894 1E-45	2.341930136
13180	CLEC2L	0.116162804	0.126574526	0.208466062	0.007821566	0	1.794602522
33085	CXorf52	0.121143935	0.095361025	0.211204691	0.025193147	0	1.743419437

3181	OR2B11	0.097455245	0.087082386	0.211964558	0.057442765	1.7756 9E-07	2.174993844
24138	C15orf51	0.12150357	0.023502011	0.213160097	0.042685484	4.5233 6E-05	1.75435254
5187	SGPP2	0.133596698	0.00977219	0.222960132	0.030993125	8.7631 6E-23	1.668904517
17861	CSRP3	0.122778143	0.066227034	0.225177332	0.008429084	0	1.834018066
10256	HIST1H2BI	0.12968372	0.183236175	0.226124244	0.207705467	8.6792 9E-06	1.743659448
16576	AGAP7	0.131604254	0.03045042	0.22820805	0.020719834	0	1.734047676
32538	TCEAL5	0.142449329	0.119005052	0.230509174	0.049033323	6.3032 7E-06	1.618183645
6039	CHDH	0.142990091	0.018738182	0.230753183	0.034551165	2.813E- 07	1.613770449
10207	RPL21P68	0.157907281	0.031472196	0.238023996	0.075389968	0.0054 0691	1.507365552
8770	RPL29P12	0.112446309	0.009297799	0.239411454	0.193596239	1.2062 5E-21	2.129117937
7091	RPL24P6	0.132229504	0.100752799	0.241941378	0.093606119	0.0086 82915	1.829707968
6385	LSAMP	0.161419601	0.01902524	0.249174053	0.067356362	5.2738 5E-07	1.543641865
16944	FGFBP3	0.086673347	0.066004482	0.249176508	0.046103709	0	2.874891969
27647	C19orf21	0.168306572	0.01225645	0.25303618	0.017713269	2.2204 5E-16	1.503424245
10233	HIST1H4C	0.128898852	0.182129649	0.253261732	0.232651113	4.0066 2E-06	1.964809839
10491	RPL7P4	0.130330706	0.115780868	0.25326413	0.05020436	1.3940 9E-10	1.943242211
13757	GFRA2	0.038476541	0.010733517	0.254255371	0.125144328	2.8736 5E-20	6.608062119
11436	LAMA2	0.152261221	0.054368499	0.255731567	0.005065864	0	1.679558103
10441	HLA-U	0.14531928	0.034455472	0.256300992	0.072910482	0.0009 17509	1.763709482
4566	RPL15P5	0.163187636	0.17784596	0.256806849	0.009575201	0	1.5736906
7698	ADAMTS3	0.164927613	0.060928675	0.26229621	0.021929634	0	1.590371708
10317	HIST1H2AM	0.108442254	0.04252044	0.275327797	0.010244253	0	2.538934649
10736	COX6A1P2	0.096485986	0.037847035	0.277528336	0.139414817	0.0003 02522	2.87635903
29712	BANF2	0.177060209	0.014753439	0.27795211	0.088161175	4.5909 8E-13	1.569816911
29868	RPL24P1	0.148969317	0.012376627	0.2787468	0.010367605	0	1.871169219
16037	C9orf163	0.170836512	0.053674015	0.279915738	0.001245288	0	1.638500666
26868	CPSF4L	0.111069427	0.009182027	0.285564038	0.047054665	5.8990 9E-58	2.571040894
16151	RPL26P28	0.096621858	0.136483086	0.286395923	0.124884811	0	2.964090407
8334	ANP32C	0.102017262	0.008421506	0.308295261	0.022001615	0	3.021991124
18502	C11orf20	0.166896426	0.019662953	0.311641895	0.178570014	1.1440 4E-10	1.86727722
28798	PSG11	0.185870256	0.015500211	0.320041474	0.052695379	7.6258	1.721854166



						8E-20	
						0.0079	
17045	NKX2-3	0.201280386	0.054487057	0.320688338	0.079302523	52728	1.593241866
19037	GUCY1A2	0.209694967	0.024638249	0.32303395	0.00398399	0	1.540494529
30595	RPL23AP3	0.069951756	0.005737419	0.324577639	0.012016782	0	4.640021292
1810	HIST2H3C	0.071181275	0.005840006	0.328614781	0.08079797	0	4.616590251
						8.1081	
33191	TBL1Y	0.218916371	0.111459688	0.334644874	0.05153198	2E-06	1.528642524
						0.0002	
9474	ECSCR_1	0.117265058	0.045967939	0.337653173	0.169553209	9538	2.879401416
						3.4086	
175	RPL7P11	0.157510713	0.013098599	0.341174507	0.125585424	8E-36	2.166040013
						1.6423	
15650	RPL36P14	0.173634775	0.245392353	0.342080962	0.258887035	3E-10	1.970117803
1728	NBPF11	0.200346728	0.045976165	0.343318679	0.014954388	0	1.713622592
3147	C1orf101	0.222777268	0.003045838	0.355887175	0.016360297	0	1.597502197
17269	RPL19P16	0.142528838	0.055835143	0.362433919	0.013373466	0	2.542881316
7462	TMEM156	0.222421548	0.111449754	0.3656718	0.026030231	0	1.644048448
604	RNU11	0.139831832	0.197587772	0.368738981	0.160885691	0	2.637017448
12453	SNORA22	0.125093765	0.176748444	0.371479156	0.162084059	0	2.969605675
2320	GPA33	0.094673372	0.037138367	0.37215695	0.047448123	0	3.930956965
31366	KCNJ4	0.191203878	0.042818277	0.378364984	0.008262303	0	1.978856227
18851	RPL7AP54	0.205086754	0.073712693	0.378976381	0.039495124	0	1.847883267
						6.3282	
2405	SLC9A11	0.223239031	0.03755496	0.382297503	0.040678389	7E-13	1.712502969
						4.8985	
10121	RPL15P3	0.227165097	0.016446858	0.384926724	0.215430541	9E-18	1.694480046
4853	PDE1A	0.206736637	0.008513956	0.399339986	0.01840944	0	1.931636263
9034	OTP	0.225696485	0.000293041	0.407800264	0.11168496	0	1.806852531
11768	RPL12P23	0.075605842	0.106761951	0.413561	0.067976093	0	5.469960914
						0.0008	
1066	RPS26P15	0.273870295	0.077127466	0.435424237	0.086573499	12363	1.589892169
						7.3869	
13462	SHH	0.278944845	0.055376581	0.444629523	0.043422381	8E-12	1.59396931
20831	RNU4-2	0.118951667	0.168062205	0.47431825	0.017358705	0	3.987487204
10323	RPLP2P1	0.25277213	0.021188508	0.47431825	0.017358705	0	1.876465776
25431	DPEP1	0.2401958	0.047733713	0.483625867	0.030521663	0	2.013465132
24647	CYCSP39	0.268914398	0.380141533	0.49085484	0.246303462	0	1.825320045
						0.0004	
8913	GTF2H2C	0.305075183	0.049224402	0.505182066	0.319972732	98272	1.655926456
						5.0516	
23718	LCTL	0.275608995	0.011461929	0.51515728	0.158027843	4E-93	1.869159891
25696	CYB5D1	0.104994246	0.004719867	0.526644714	0.213077274	0	5.015938828
21658	DUXAP9	0.213071154	0.028796982	0.531481134	0.060869544	0	2.494383326
						1.3815	
29847	DEFB124	0.252343607	0.136334047	0.539571956	0.089186044	6E-12	2.138243019
1430	SCARNA2	0.170379642	0.014187578	0.55492022	0.091740199	0	3.25696318
29509	ZNF837	0.314878436	0.026491722	0.5580106	0.025933489	0	1.772146126
10246	HIST1H2BG	0.261502472	0.369659487	0.560303495	0.138089771	0	2.142631735
25747	RPS27AP1	0.300413598	0.251177138	0.574788391	0.107303979	1.1961	1.913323477

						1E-10	
4215	SNORD89	0.291300448	0.411800189	0.586099962	0.021310433	0	2.012011878
3436	EMILIN1	0.399188229	0.068680963	0.602991563	0.173825859	0.0011 10165	1.510544449
25461	DOC2B	0.313295352	0.00327654	0.60317073	0.131120998	0	1.925246342
11287	PPIL6	0.385995963	0.043041316	0.608822194	0.093890929	9.9706 3E-09	1.577276068
11223	PRDM13	0.359263315	0.00709304	0.642654931	0.118619606	0	1.788813119
25403	SNAI3	0.222649083	0.126694339	0.659781519	0.140665875	1.9095 8E-14	2.963324668
16113	TUBB8	0.417313253	0.165046948	0.659959195	0.134464467	0.0007 58261	1.581447965
1161	RPL31P12	0.34926526	0.493774811	0.667501317	0.189196927	0	1.911158635
26640	RPL7P48	0.176882428	0.13482773	0.705517913	0.223075991	1.7552 8E-11	3.988626358
17245	LDHAL5	0.398593812	0.070494976	0.729029402	0.052730125	0	1.829003313
14094	NPM1P6	0.410299254	0.07268673	0.734572019	0.260946592	9.4741 7E-06	1.79033233
12523	WBSCR26	0.292008682	0.157815264	0.73626459	0.152538403	1.7109 9E-11	2.521379109
27547	SERPINB2	0.491410009	0.064459847	0.746281297	0.027264026	0	1.518653025
26789	SNORA76	0.39191046	0.15301318	0.752711563	0.02715707	0	1.920621264
6110	RPL21P41	0.355050845	0.095839291	0.77021763	0.504411252	0.0005 03255	2.169316424
33261	CDC27P2	0.526467002	0.225670751	0.804299765	0.078108992	8.6273 2E-12	1.527730632
18023	CHRM4	0.487764734	0.110085426	0.862157049	0.032956844	0	1.767567411
18941	SNORA18	0.394849403	0.154156785	0.881044526	0.146106532	1.3340 4E-12	2.231343187
16758	MYOZ1	0.516039646	0.027753218	0.919242593	0.017738048	0	1.781341026
5368	TWIST2	0.537559333	0.193893444	0.929110306	0.209382742	0.0004 09654	1.728386521
29682	ISM1	0.422436464	0.002458484	0.946078008	0.07913092	0	2.23957468
9678	SPARC	0.509615643	0.027523695	0.95076649	0.086318216	0	1.865654054
93	TMEM52	0.497773065	0.016419938	0.9573063	0.058759833	0	1.923178184
29217	FPR1	0.352283158	0.067333379	0.974694172	0.05268855	0	2.766791858
30463	ADAMTS1	0.405636274	0.066200231	0.979000229	0.080407817	0	2.413492808
628	NKAIN1	0.493832791	0.131043575	1.040912178	0.056859768	0	2.107823126
22159	RN7SL3	0.418692545	0.118152934	1.108583473	0.274039643	3.0162 1E-08	2.647726803
24898	TOP	0.748326739	0.037764052	1.129558836	0.298717703	2.1289 2E-28	1.509446044
16077	GRIN1	0.700792454	0.047110624	1.201967348	0.021319691	0	1.715154524
5332	SH3BP4	0.544718722	0.017684267	1.225790683	0.02876187	0	2.250318619
30698	HSF2BP	0.726650385	0.113818737	1.231588208	0.215307701	2.2409 1E-06	1.694884133
5509	SLC6A11	0.520502694	0.042625728	1.339794645	0.188602727	0	2.574039793
11877	ZNF853	0.697767982	0.004452959	1.360077579	0.165959674	0	1.94918313
22045	RNU1F1	0.30543645	0.431791514	1.418852481	0.524391413	0	4.645327964
25197	TMED6	0.963340743	0.079907281	1.448381214	0.07799525	0	1.503498346

4601	RPS29P8	0.855919164	0.073213494	1.4536236	0.620301219	1.3725 9E-15	1.698318791
15759	C5	0.865986411	0.060605946	1.564435997	0.072286303	0	1.806536428
18942	SNORA40	0.68607202	0.135346545	1.564956703	0.313356408	4.3370 1E-09	2.281038516
27656	KISS1R	0.837251591	0.10982477	1.999730959	0.160202111	0	2.38844689
23410	LTK	1.487174567	0.198678394	2.253919861	0.0783515	0	1.515571817
1772	RNU1G3	0.115313665	0.162913848	2.398697961	1.626144157	0	20.80150661
25440	SPIRE2	1.387291965	0.096999619	2.622720257	0.026179428	0	1.890532291
353	RNU1A	0.43235124	0.036567643	2.878481429	2.890866447	4.0636 E-147	6.65773834
22044	RNU1G1	0.320436805	0.125191846	3.016596642	1.900471906	1.9274 4E-14	9.414014231
899	HPDL	2.177109437	0.026871508	3.487762483	0.391408902	0	1.602015233
8522	TERT	1.76298792	0.170800741	3.601942944	0.241927139	0	2.043089975
25233	CHST4	2.200079249	0.069986376	3.956529646	0.112180548	0	1.798357786
18446	RNU2-2	0.915246692	0.612449416	4.014018214	3.579700013	0.0085 66984	4.385722723
24235	CCDC78	2.729563304	0.093641337	4.177686576	0.782934272	3.2973 6E-66	1.53053295
14087	CA8	2.323352736	0.298084655	4.189522979	0.112604695	0	1.803222952
1720	GPR89B	2.787769768	1.362838098	4.587802847	0.977477174	0.0002 89033	1.645689289
28997	ZNF114	3.318019654	0.006466424	4.984637585	0.010970193	0	1.502292965
25904	SNORD3A	0.801794142	0.158003115	6.911434999	5.12629411	2.8627 9E-46	8.619961953
10065	F13A1	3.942445891	0.042576978	7.317303564	0.145725805	0	1.85603145
29661	C20orf103	3.989996595	0.050286903	8.470905483	0.567427879	0	2.123035767
17896	LGR4	6.565888638	0.31435892	9.964743765	0.166975828	0	1.517653484
12903	PUS7	6.13679177	0.334508686	10.00060316	0.081221432	0	1.629614225
3360	SDC1	6.176473102	0.374098253	11.19408395	0.379649518	0	1.812374759
17343	EBF3	6.020848134	0.200069251	12.12614387	0.208260067	0	2.014025865
5752	RPS27P4	6.292631463	0.276706001	13.30238947	2.318178844	1.4415 E-125	2.113962902
31529	WNT7B	9.196437237	0.261323726	14.09424665	0.070675454	0	1.532576833
29724	C20orf12	11.41342403	0.422801904	18.72822357	1.097459606	0	1.640894399
4717	DHRS9	9.435790339	0.56729593	21.30148689	1.385081057	0	2.257520157
26671	AKAP1	16.87595617	0.2643531	25.42286699	0.077094736	0	1.506454908
9851	NOP16	20.13205679	0.038452113	31.13896961	1.122384305	0	1.546735633
27068	PCYT2	26.27783436	0.038145831	39.97920171	0.391444377	0	1.521403977
31823	CXorf21	22.98809647	0.49100914	40.60730156	0.479679393	0	1.766449067
33156	RPS4Y1	26.48963821	1.546752367	65.9893584	2.132533173	0	2.49113853
22145	RN7SL1	20.5264985	1.01763626	71.66107949	43.95985247	1.9212 E-234	3.491149721
13457	INSIG1	90.92012164	1.56547048	151.8826773	0.846154926	0	1.670506754

**Supplementary Table 4. Ingenuity upstream regulator analysis in Ingenuity pathway analysis (IPA).** The predicated activation of transcription factors was obtained by IPA upstream regulator analysis using the significantly altered genes (shown in Supplementary Table 3) in THP-1 *lilrb4*-KO cells in comparison with those in THP-1 WT cells (n=2 biologically independent samples). Transcription factors with activation z-score >1.5 or <-1.5 were shown. The *p* value was calculated using Fisher's Exact Test, and significance is generally attributed to *p* value < 0.01.

<b>GENE ID</b>	<b>z-score</b>	<b><i>p</i> value</b>
SMARCA4	-4.172	0.000245
RELA	-3.936	9.56E-12
CREB1	-3.325	0.000279
CEBPA	-3.101	0.00000153
IRF7	-3.098	0.0042
ECSIT	-3.094	1.01E-08
IRF5	-3.054	0.000126
NFKB1	-3.025	5.78E-11
STAT1	-2.946	1.82E-08
HNF1B	-2.828	0.0492
ID3	-2.813	0.00825
FOXL2	-2.782	3.66E-09
FOXO1	-2.743	0.000172
IFI16	-2.739	0.0000456
STAT4	-2.675	0.000715
REL	-2.633	0.00318
IRF6	-2.613	0.000000869
PPRC1	-2.592	0.000769
CEBPB	-2.578	0.0000267
IRF8	-2.445	0.00000239
HIF1A	-2.425	0.00000234
JUNB	-2.405	0.00111
EGR1	-2.369	0.000439
EP300	-2.228	8.12E-08
STAT2	-2.219	0.00101

KAT5	-2.219	0.289
HMGB1	-2.215	6.98E-10
NFE2L2	-2.2	0.159
NCOA1	-2.183	0.145
TARDBP	-2	0.0204
MAML1	-2	0.00136
ISL1	-1.982	0.176
DDIT3	-1.98	0.142
EPAS1	-1.96	0.0436
HEY2	-1.96	0.0204
HOXA5	-1.949	0.00422
HMGB1	-1.922	0.000201
ETV4	-1.916	0.0204
KLF6	-1.862	0.00178
TWIST1	-1.861	0.0000715
STAT3	-1.86	4.23E-10
ATF2	-1.843	0.0000489
ELF3	-1.78	0.000376
IRF3	-1.774	0.00000104
FOXO3	-1.751	1
CDKN2A	-1.731	0.00119
SAMD2	-1.72	0.0247
SMAD3	-1.684	0.000000124
FOS	-1.675	0.00206
POU5F1	-1.65	0.00319
CREBBP	-1.64	0.0000128
NFKB1A	-1.625	0.000000139
SPI1	-1.526	0.0078
JUN	-1.525	8.25E-10
TSC22D3	1.555	0.00000175
GPS2	1.633	0.000769
BCL6	1.66	0.00000203
NCOR1	1.698	0.0002
FOXA2	1.787	0.126
ZBTB16	1.802	0.00549
BCL3	1.827	0.0000749
HNF1A	1.854	0.032
SMAD7	1.875	0.0358
MYCN	1.949	1
TFAP2A	1.953	0.231
PTF1A	1.98	0.155

ASCL1	1.982	0.385
HLX	1.982	0.0251
TRIM24	2.138	0.0179
BACH2	2.191	0.0165
FOSL1	2.562	0.000142
GFI1	2.804	0.00205
ZFP36	3.082	6.6E-11

**Supplementary Table 5. General patient information of 31 leukemia patient samples used in this study from UTSW and MD Anderson cohorts.** BM, Bone marrow; PB, Peripheral blood; PDX, Patient-derived xenograft; ED, Extended Data figure; N/A, not available.

Sample_ID in text	Age (yrs)	Gender	Specimen	FAB subtype	Cohort	Experiments	Index
AML#1	13	Male	BM	M5b	UTSW	PDX/ Infiltration	Fig1/ED4
AML#2	17	Male	BM	M5a	UTSW	PDX	Fig1
AML#3	47	Female	PB	M4	MD Anderson	PDX	Fig1
AML#4	N/A	Male	BM	M5b	UTSW	PDX	ED4
AML#5	57	Female	BM	M4	UTSW	PDX	ED4
AML#6	66	Female	PB	AMML	UTSW	PDX	ED4
AML#7	66	Female	BM	AMML	UTSW	PDX	ED4
AML#8	76	Male	BM	M5a	UTSW	PDX/ T/AML coculture	ED4/ ED1
AML#9	32	Female	PB	M5a	MD Anderson	PDX	ED4
AML#10	29	Female	BM	M4	UTSW	PDX	ED4
AML#11	50	Male	PB	M5a	MD Anderson	PDX	ED4
AML#12	57	Female	BM	M4	UTSW	PDX	ED4
AML#13	55	Male	BM	M4	UTSW	PDX	ED4
AML#14	51	Female	BM	M5b	UTSW	PDX	ED4
AML#15	N/A	N/A	PB	AMML	UTSW	PDX	ED4
AML#16	58	Female	BM	M4	UTSW	PDX	ED4
AML#17	79	Male	BM	M5a	UTSW	T/AML coculture	ED1
AML#18	84	Male	BM	M5b	UTSW	T/AML coculture/ Flow	ED1/ED7/ED8
AML#19	47	Male	BM	M4	UTSW	T/AML coculture/ Flow	ED1/ED7/ED8
AML#20	64	Female	BM	M5	UTSW	T/AML coculture/ Infiltration	ED1/ ED4

AML#21	1	Female	PB	M5	UTSW	Infiltration	ED4
AML#22	35	Male	PB	M4	MD Anderson	Flow	ED8
AML#23	55	Female	PB	M4	MD Anderson	Flow	ED8
AML#24	41	Male	PB	M4	MD Anderson	Flow	ED8
AML#25	69	Male	PB	AMML	UTSW	Flow	ED8
AML#26	N/A	N/A	PB	M5a	UTSW	Flow	ED8
AML#27	88	Female	BM	AMML	UTSW	Flow	ED8
AML#28	63	Femle	BM	M4	UTSW	Western blot	ED9
AML#29	58	Male	PB	M5a	UTSW	Western blot	ED9
B-ALL#1	8	Male	MCD	B-ALL	UTSW	T/ALL coculture	ED1
B-ALL#2	5	Male	PB	B-ALL	UTSW	T/ALL coculture	ED1