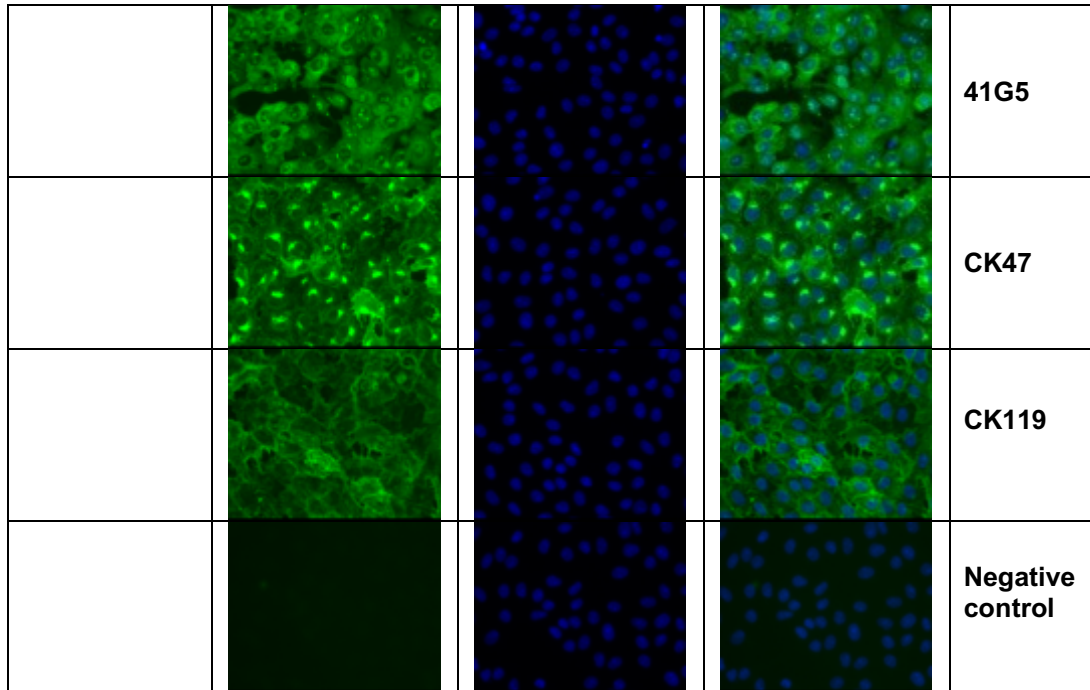


S5 Fig

Alphavirus	Alexa Fluor 488	DAPI	Merge	mAb
Chikungunya				3D11
				11E11
				13H11
				15B2
				19B8
				RC5-3
				24B3
				26A2
				32A3
				37C7



**S5 Fig. Indirect immunofluorescence analysis of anti-chikungunya virus (CHIKV) mAbs against CHIKV-infected Vero cells.** CHIKV (strain 15010791) was used to infect Vero cells. Infected cells were stained with anti-CHIKV E protein or capsid protein monoclonal antibodies (mAbs), name as indicated. mAb CK119 was used as a positive control to detect CHIKV-infected cells. The detection was based on Alexa Fluor 488-conjugated secondary antibody (green, left panels). DAPI nuclear counterstain was used to stain nuclei of cells (blue, middle panels). Alexa Fluor 488 and DAPI images were merged using MetaVue (Molecular Devices Japan) and the merged images are shown in the right panels (Merge). Images are representative of results obtained from two independent experiments and were taken under 40x objective magnification using a fluorescence microscope (ECLIPSE Ti2, Nikon, Tokyo, Japan).