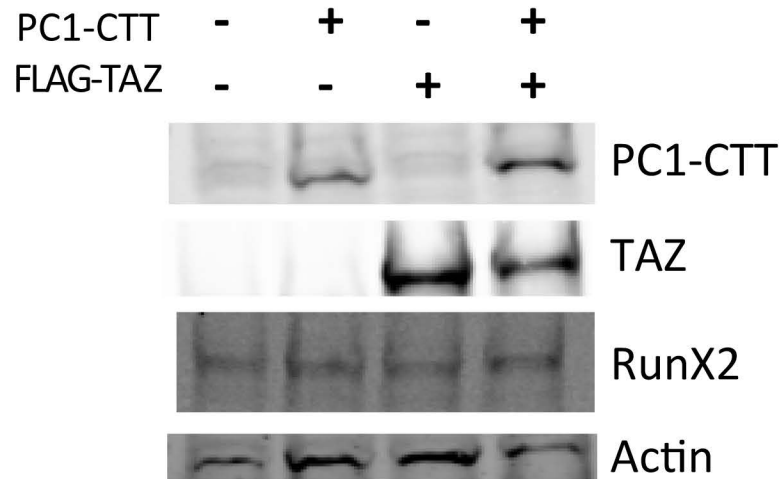
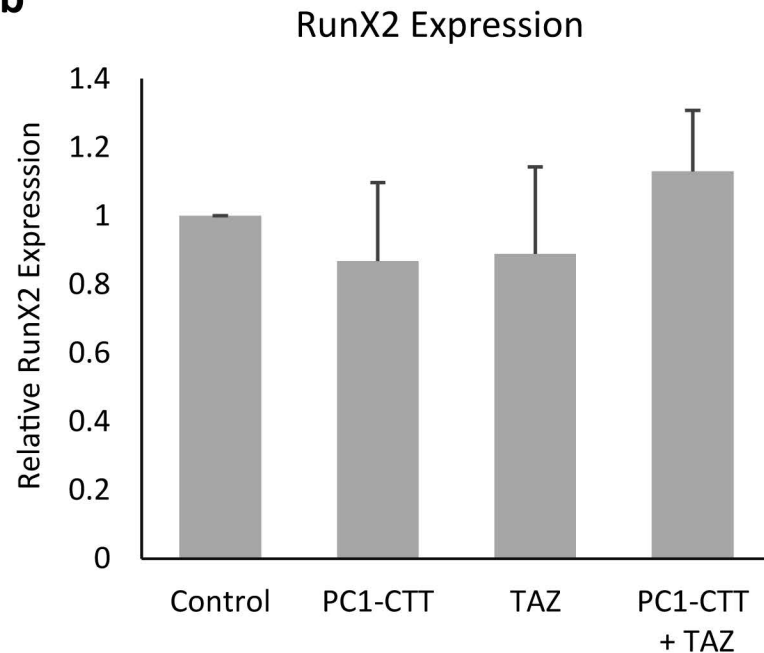


Supplemental Figure 1

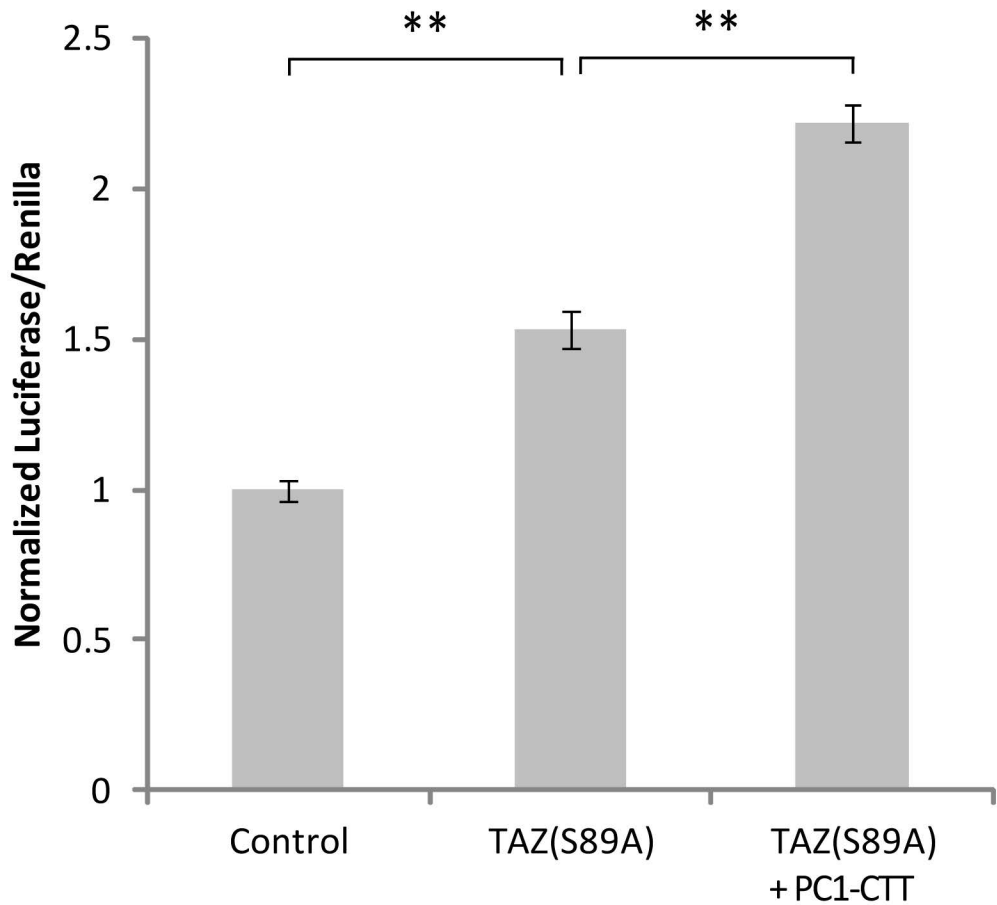
a



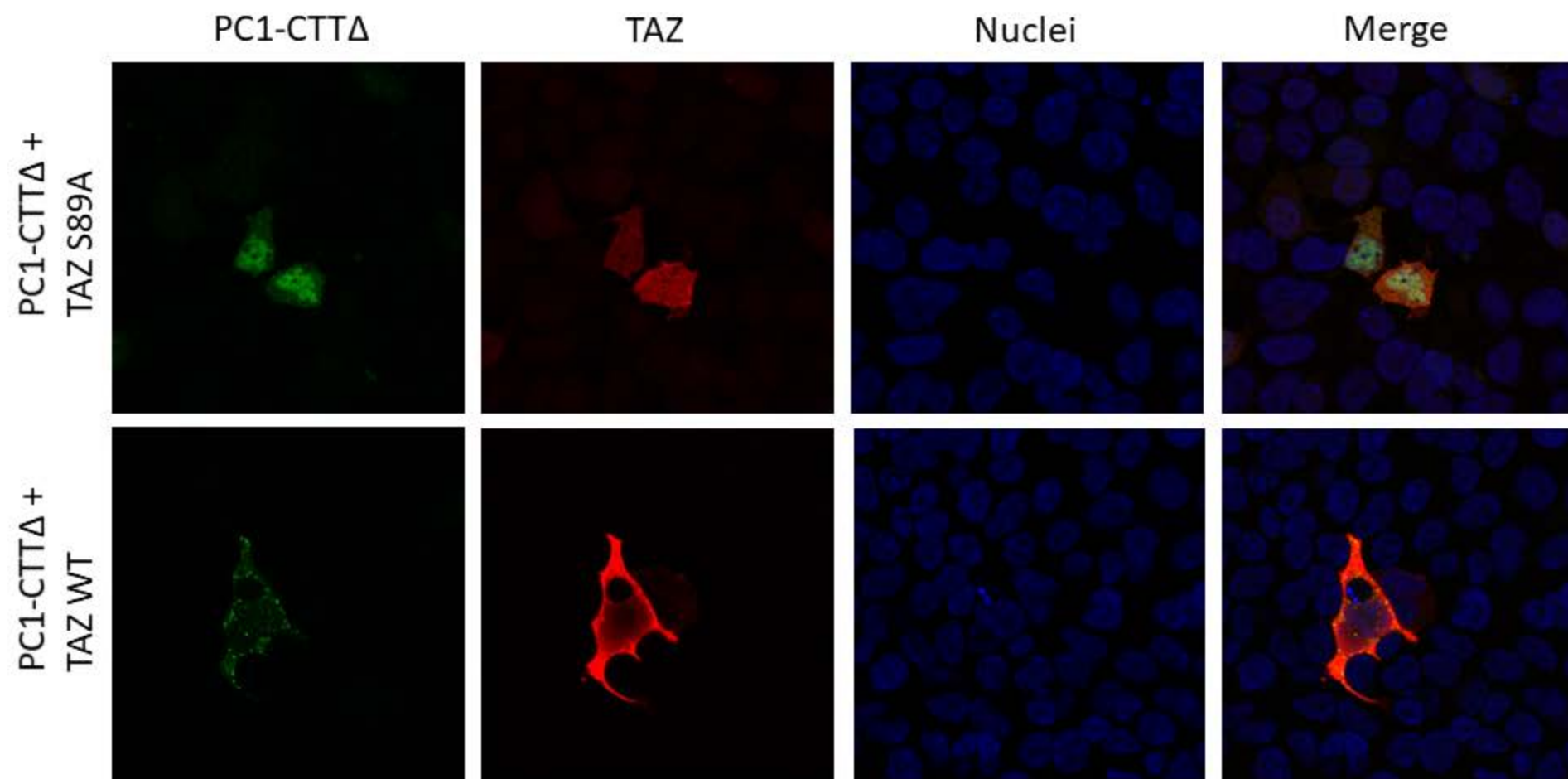
b



RunX2-Luciferase



Supplemental Figure 3



Supplemental Table 1

Symbol	PC1-CTTΔNLS (Negative Control)	PC1-CTT	Fold Stimulation (PC1-CTT vs PC1-CTTΔNLS)	Species	Annotation
Wwtr1	1.099	40.292	36.668	Mm	RIKEN cDNA 2310058J06 gene
Bclaf1	4.205	81.332	19.343	Mm	RIKEN cDNA 2700025J07 gene
Pxn	1.202	15.787	13.133	Mm	Clone
Ssbp4	1.394	9.339	6.700	Mm	RIKEN cDNA 1210002E11 gene
E2f4	1.228	7.924	6.455	Mm	E2F transcription factor 4
Ssbp2	1.280	7.282	5.690	Mm	Single-stranded DNA binding protein 2
NFIA	1.748	8.360	4.783	Hs	Nuclear Factor IA, clone MGC:22317
TBPL1	0.257	0.814	3.165	Hs	TBP-like 1, clone MGC:8389
Ifi202b	1.233	3.420	2.775	Mm	Interferon activated gene 202B
Hnf4a	2.393	5.827	2.435	Mm	Hepatic nuclear factor 4 (alpha TF4)
Cnr2	5.610	12.396	2.210	Mm	Cannabinoid receptor 2 (macrophage)
Tpm2	3.481	7.489	2.151	Mm	Tropomyosin 2, beta
Btbd3	4.441	9.138	2.058	Mm	BTB (POZ) domain containing 3
Ell	0.921	1.850	2.008	Mm	Eleven-nineteen lysine-rich leukemia gene
Creb5	1.880	3.355	1.784	Mm	RIKEN cDNA D430026C09 gene
Repin1	23.258	40.801	1.754	Mm	Similar to replication initiation region protei
Foxj2	0.869	1.480	1.703	Mm	Forkhead box J2
Nfatc4	5.362	9.023	1.683	Mm	Nuclear factor of activated T-cells
Glis2	0.610	0.973	1.595	Mm	GLI-Kruppel family member GLI5
Pbxip1	1.245	1.891	1.519	Mm	Pre-B-cell leukemia transcription factor
Trim68	1.720	2.557	1.487	Mm	RIKEN cDNA F730114J12 gene
Irx2	1.255	1.811	1.444	Mm	Iroquois related homeobox 2 (Drosophila)
NONO	1.062	1.507	1.419	Hs	Non-POU-domain-containing, octamer-bind
Blank	1.070	1.076	1.006	Mm	Blank Well

Supplemental Table 1: Co-Activator TRAP Screen. HEK293 cells in 364-well plates were individually transfected with one of over 800 transcription-factor-Gal4 (TF-Gal4) fusion proteins in the presence of PC1-CTT or PC1-CTTΔNLS (deleted nuclear-localization sequence), as a negative control. The results are listed by fold-change in TF-Gal4 signal presented as the ratio of PC1-CTT/PC1-CTTΔNLS, in descending order of those transcription factors that showed the most stimulation by PC1-CTT, filtered by relevance.