

Supplementary Material**Oesophageal Cancer Clinical and Molecular Stratification (OCCAMS) Consortium:**

Ayesha Noorani¹, Paul A.W. Edwards^{1,2}, Nicola Grehan¹, Barbara Nutzinger¹, Caitriona Hughes¹, Elwira Fidziukiewicz¹, Jan Bornschein¹, Shona MacRae¹, Jason Crawte¹, Gianmarco Contino¹, Xiaodun Li¹, Rachel de la Rue¹, Maria O'Donovan^{1,3}, Ahmad Miremadi^{1,3}, Shalini Malhotra^{1,3}, Monika Tripathi^{1,3}, Simon Tavaré², Andy G. Lynch², Matthew Eldridge², Maria Secrier², Lawrence Bower², Ginny Devonshire², Juliane Perner², Sriganesh Jammula², Jim Davies⁵, Charles Crichton⁵, Nick Carroll⁶, Peter Safranek⁶, Andrew Hindmarsh⁶, Vijayendran Sujendran⁶, Stephen J. Hayes^{7,14}, Yeng Ang^{7,8,29}, Shaun R. Preston⁹, Sarah Oakes⁹, Izhar Bagwan⁹, Vicki Save¹⁰, Richard J.E. Skipworth¹⁰, Ted R. Hupp¹⁰, J. Robert O'Neill^{10,23}, Olga Tucker^{11,33}, Andrew Beggs^{11,28}, Philippe Taniere¹¹, Sonia Puig¹¹, Timothy J. Underwood^{12,13}, Fergus Noble¹², Jack Owsley¹², Hugh Barr¹⁵, Neil Shepherd¹⁵, Oliver Old¹⁵, Jesper Lagergren^{16,25}, James Gossage^{16,24}, Andrew Davies^{16,24}, Fujun Chang^{16,24}, Janine Zylstra^{16,24}, Ula Mahadeva¹⁶, Vicky Goh²⁴, Francesca D. Ciccarelli²⁴, Grant Sanders¹⁷, Richard Berrisford¹⁷, Catherine Harden¹⁷, David Bunting¹⁷, Mike Lewis¹⁸, Ed Cheong¹⁸, Bhaskar Kumar¹⁸, Simon L Parsons¹⁹, Irshad Soomro¹⁹, Philip Kaye¹⁹, John Saunders¹⁹, Laurence Lovat²⁰, Rehan Haidry²⁰, Victor Eneh²⁰, Laszlo Igali²¹, Michael Scott²², Sharmila Sothi²⁶, Sari Suortamo²⁶, Suzy Lishman²⁷, George B. Hanna³¹, Christopher J. Peters³¹, Anna Grabowska³², Richard Turkington³⁴.

¹ Medical Research Council Cancer Unit, Hutchison/Medical Research Council Research Centre, University of Cambridge, Cambridge, UK

² Cancer Research UK Cambridge Institute, University of Cambridge, Cambridge, UK

³ Department of Histopathology, Addenbrooke's Hospital, Cambridge, UK

⁴ Oxford ComLab, University of Oxford, UK, OX1 2JD

⁵ Department of Computer Science, University of Oxford, UK, OX1 3QD

⁶ Cambridge University Hospitals NHS Foundation Trust, Cambridge, UK, CB2 0QQ

⁷ Salford Royal NHS Foundation Trust, Salford, UK, M6 8HD

⁸ Wigan and Leigh NHS Foundation Trust, Wigan, Manchester, UK, WN1 2NN

⁹ Royal Surrey County Hospital NHS Foundation Trust, Guildford, UK, GU2 7XX

¹⁰ Edinburgh Royal Infirmary, Edinburgh, UK, EH16 4SA

¹¹ University Hospitals Birmingham NHS Foundation Trust, Birmingham, UK, B15 2GW

¹² University Hospital Southampton NHS Foundation Trust, Southampton, UK, SO16 6YD

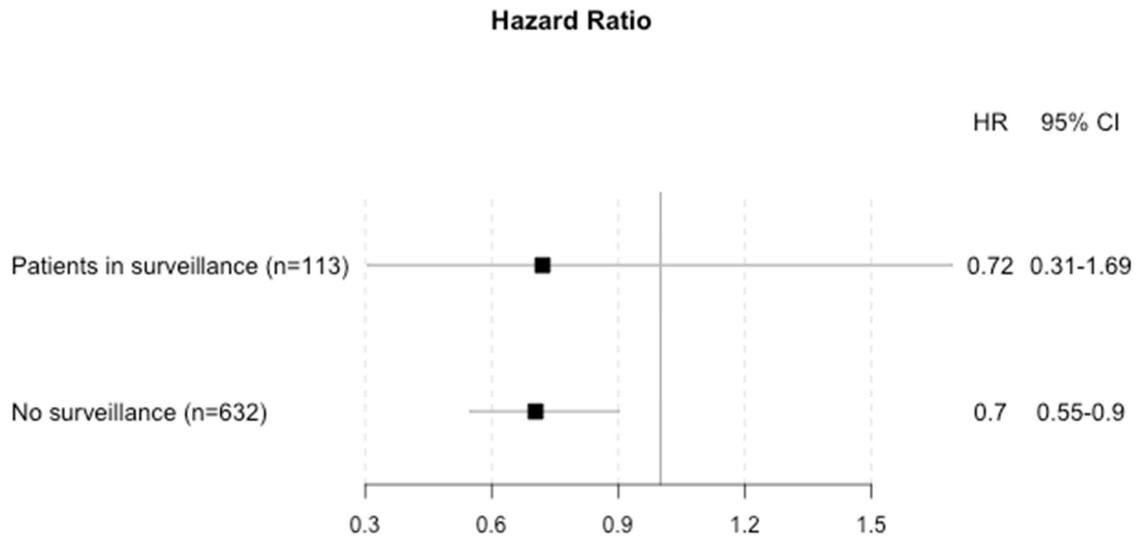
¹³ Cancer Sciences Division, University of Southampton, Southampton, UK, SO17 1BJ

- ¹⁴Faculty of Medical and Human Sciences, University of Manchester, UK, M13 9PL
- ¹⁵Gloucester Royal Hospital, Gloucester, UK, GL1 3NN
- ¹⁶Guy's and St Thomas's NHS Foundation Trust, London, UK, SE1 7EH
- ¹⁷Plymouth Hospitals NHS Trust, Plymouth, UK, PL6 8DH
- ¹⁸Norfolk and Norwich University Hospital NHS Foundation Trust, Norwich, UK, NR4 7UY
- ¹⁹Nottingham University Hospitals NHS Trust, Nottingham, UK, NG7 2UH
- ²⁰University College London, London, UK, WC1E 6BT
- ²¹Norfolk and Waveney Cellular Pathology Network, Norwich, UK, NR4 7UY
- ²²Wythenshawe Hospital, Manchester, UK, M23 9LT
- ²³Edinburgh University, Edinburgh, UK, EH8 9YL
- ²⁴King's College London, London, UK, WC2R 2LS
- ²⁵Karolinska Institutet, Stockholm, Sweden, SE-171 77
- ²⁶University Hospitals Coventry and Warwickshire NHS, Trust, Coventry, UK, CV2 2DX
- ²⁷Peterborough Hospitals NHS Trust, Peterborough City Hospital, Peterborough, UK, PE3 9GZ
- ²⁸Institute of Cancer and Genomic sciences, University of Birmingham, B15 2TT
- ²⁹GI science centre, University of Manchester, UK, M13 9PL.
- ³⁰Queen's Medical Centre, University of Nottingham, Nottingham, UK, NG7 2UH
- ³¹Imperial College NHS Trust, Imperial College London, UK, W2 1NY
- ³²Queen's Medical Centre, University of Nottingham, Nottingham, UK
- ³³Heart of England NHS Foundation Trust, Birmingham, UK, B9 5SS.
- ³⁴Centre for Cancer Research and Cell Biology, Queen's University Belfast, Northern Ireland, UK, BT7 1NN.

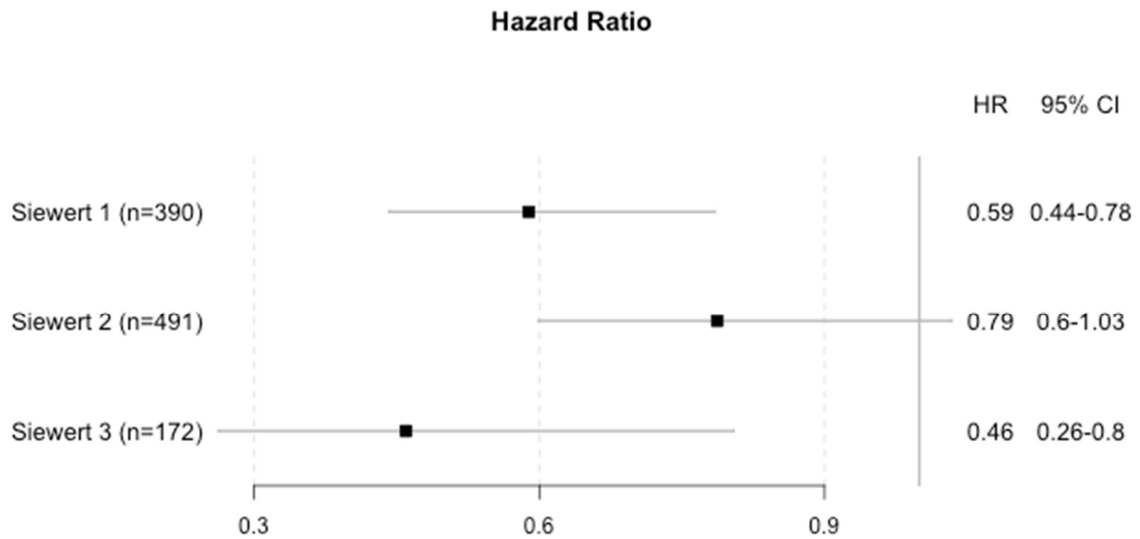
Supplementary Figures

In the OCCAMS cohort we test the following covariates to determine if these drive the survival difference for BE/IM patients: Barrett's surveillance (Suppl. Fig. 1), tumor location (Suppl. Fig. 2), TNM Stage (Suppl. Fig. 3), treatment (Suppl. Fig. 4), and response to neoadjuvant therapy (Suppl. Fig. 5). All models control for age at diagnosis and sex.

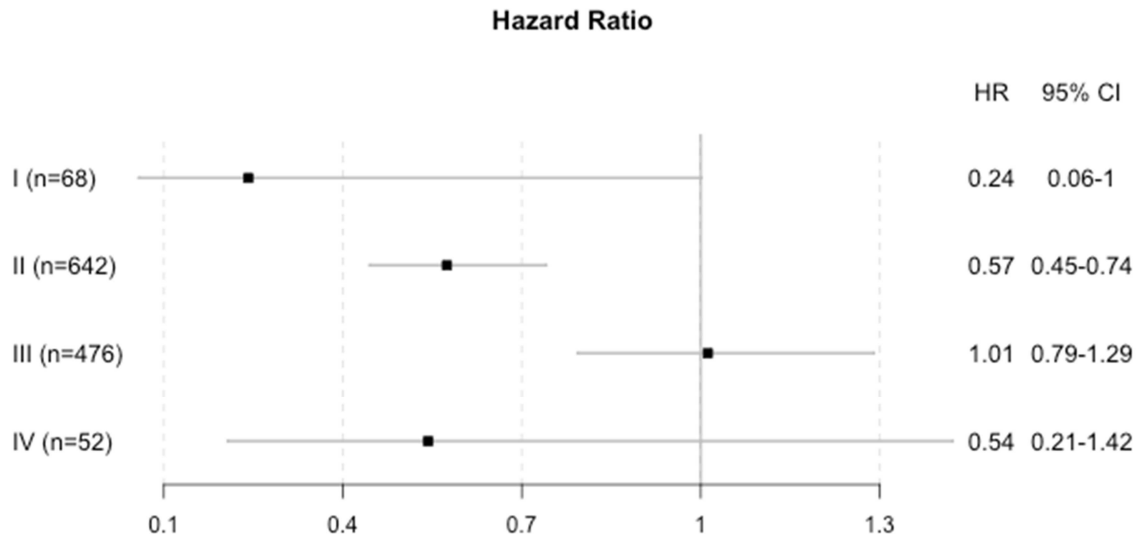
None of the subgroups alter the effect of BE/IM on survival.



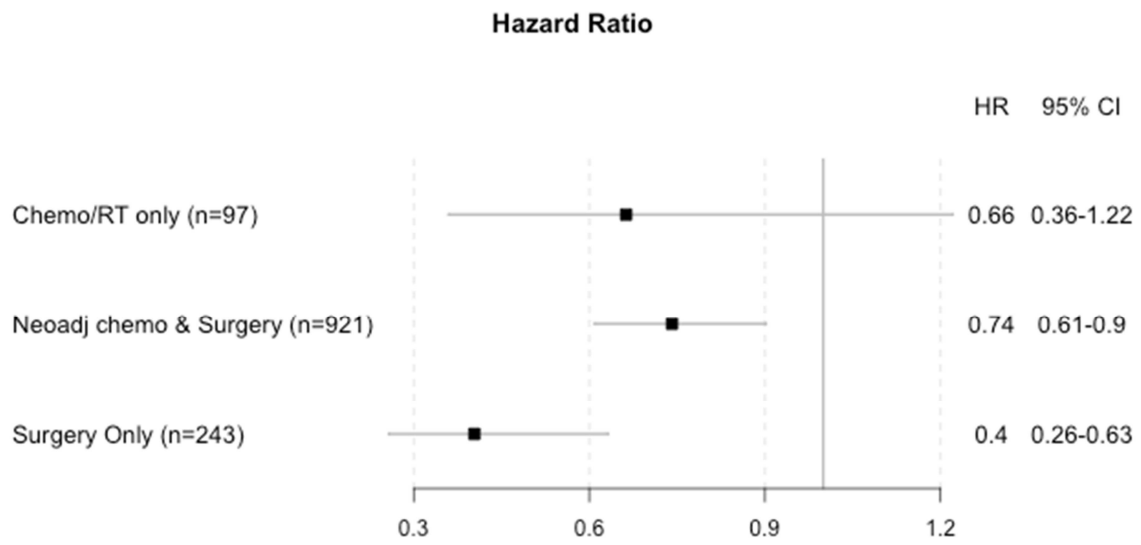
Supplementary Figure 1: Barrett's surveillance in OCCAMS cohort



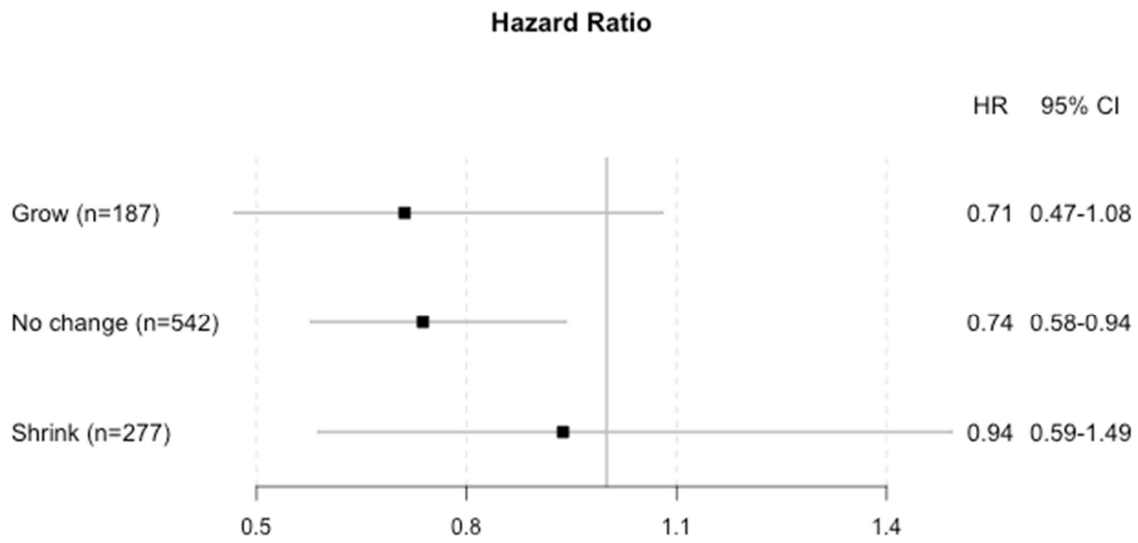
Supplementary Figure 2: Siewert classification.



Supplementary Figure 3: TNM stages.



Supplementary Figure 4: Treatment regimens.



Supplementary Figure 5: Tumor response to neoadjuvant therapy.

Supplementary Table 1. Tumor length comparison between BE/IM and non-BE/IM based on stages for the Mayo cohort

Stage	Length 1-3 cm		3 cm<Length ≤ 6 cm		Length >6 cm		Missing		P value
	BE/IM, n (%)	Non-BE/IM, n (%)	BE/IM, n (%)	Non-BE/IM, n (%)	BE/IM, n (%)	Non-BE/IM, n (%)	BE/IM, n (%)	Non-BE/IM, n (%)	
I	53 (85.5)	6 (60)	4 (6.5)	3 (30)	0	0	5 (8)	1 (10)	0.06
II	31 (56.4)	17 (46)	17 (30.9)	12 (32.4)	4 (7.3)	3 (8.1)	3 (5.4)	5 (13.5)	0.54
III	15 (24.6)	25 (26.9)	26 (42.6)	39 (41.9)	16 (26.2)	22 (23.7)	4 (6.6)	7 (7.5)	0.97
IV	8 (30.8)	6 (9)	10 (38.5)	18 (26.9)	3 (11.5)	21(31.3)	5 (19.2)	22 (32.8)	0.01