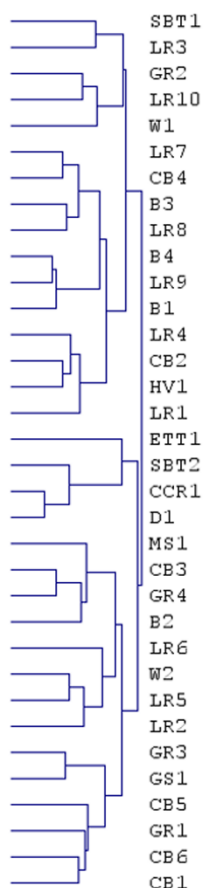
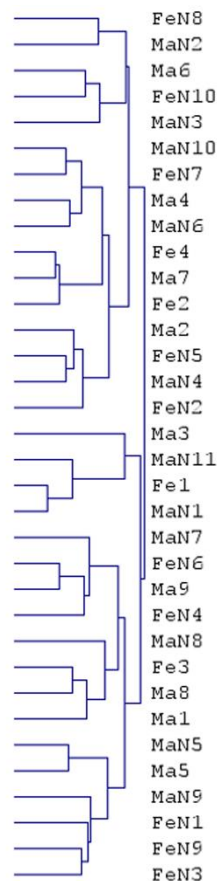


**Figure S1. Unsupervised hierarchical clustering of 34 MCTs on the basis of the expression values of the 20% of Transcript clusters (1,041) with the highest variance in expression signal**

**A. MCTs labelled according to breed.**



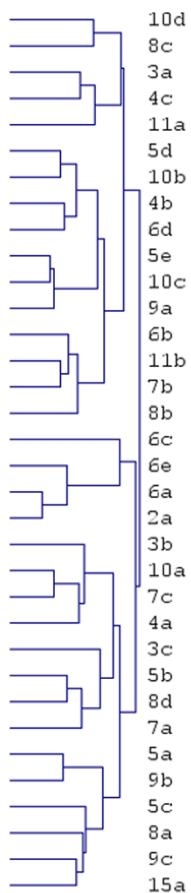
**B. MCTs labelled according to sex.**



B - Boxer; CB - Cross breed, CCR - Curly Coated Retriever, D - Dogue de Bordeaux, ETT - English Toy Terrier, GS- German Shepherd, HV - Hungarian Vizsla, LR - Labrador Retriever, MS - Miniature Schnauzer, SBT - Staffordshire Bull Terrier, W - Whippet.

Fe - Female, FeN - Neutered female, Ma - Male, MaN - Neutered male.

**C. MCTs labelled according to age.**



Numbers indicate age in years.