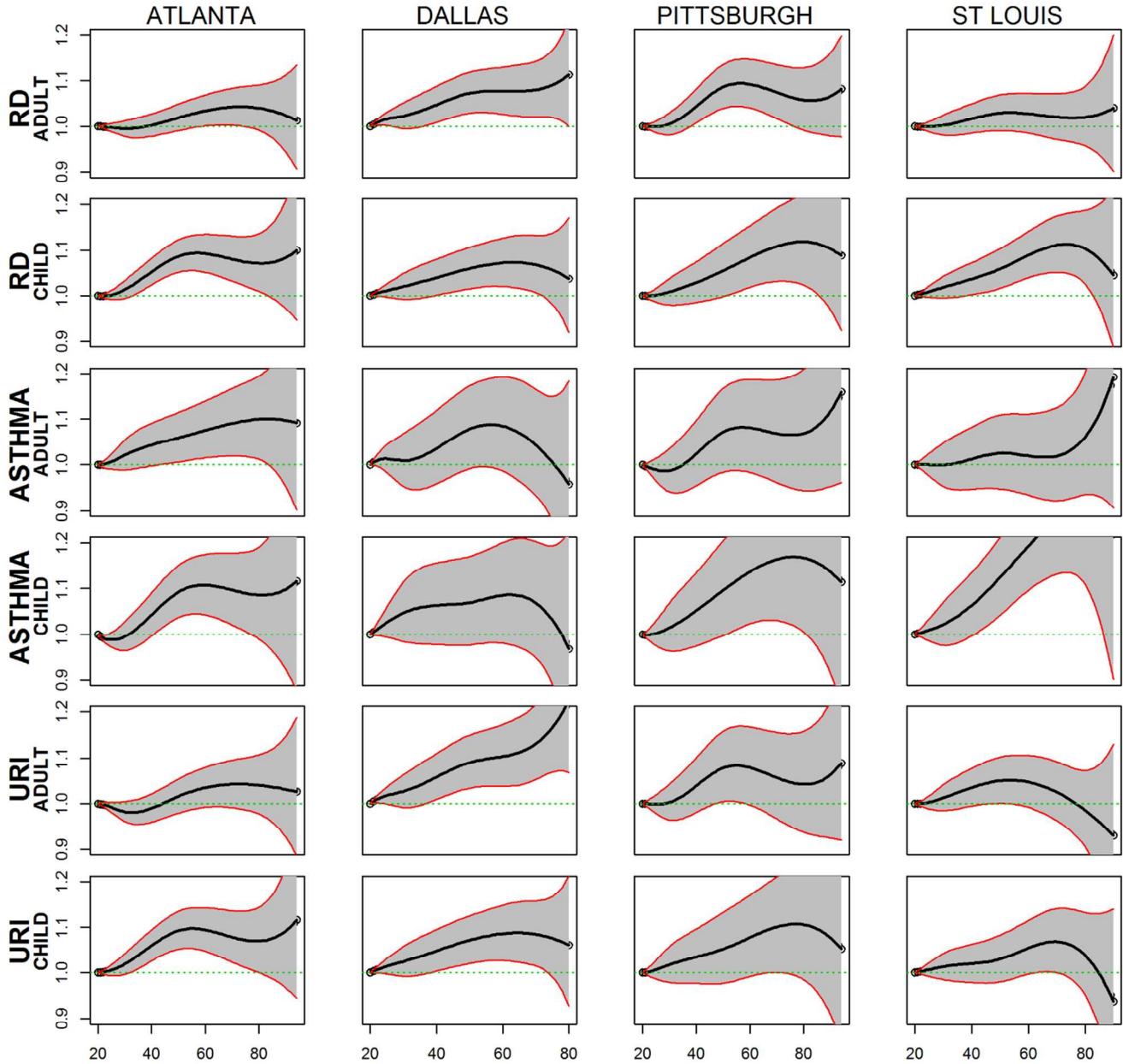


Supplemental Table S1. O₃ concentration distribution by city and summer/winter seasons (summer = June, July, and August; winter = December, January, and February)

City/Season	Ozone (ppb) levels across city/season days					
	Minimum	10 th percentile	50 th percentile	90 th percentile	Maximum	Mean
Atlanta Summer	22.2	40.1	57.0	86.6	96.5	56.6
Atlanta Winter	9.2	18.5	25.4	34.7	46.2	26.0
Birmingham Summer	23.6	36.2	51.8	67.6	83.5	51.7
Birmingham Winter	9.4	21.2	27.4	36.2	49.1	27.9
Dallas Summer	28.2	35.8	50.6	68.9	80.2	50.6
Dallas Winter	9.2	19.8	29.2	38.2	44.5	28.6
Pittsburgh Summer	23.6	42.5	55.6	70.7	106.3	55.6
Pittsburgh Winter	3.9	13.0	20.0	27.6	35.8	20.0
St. Louis Summer	29.4	41.6	55.7	71.1	89.6	55.7
St. Louis Winter	6.5	15.5	22.3	29.3	39.3	22.4

Supplemental Figure S1. Rate ratios and 95% confidence intervals from cubic spline C-R models for adults (>18 years) and children (≤18 years).^a Rate ratios use O₃ of 20 ppb as reference.



^aBirmingham not included because no children's hospital data available