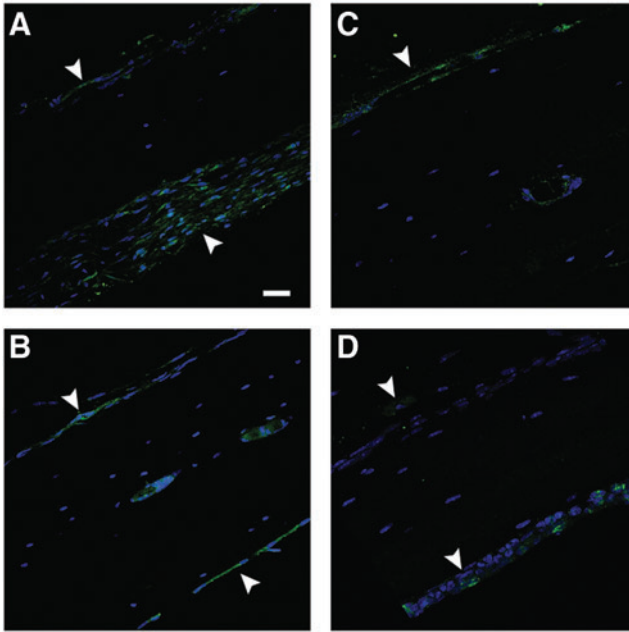


eGFP/DAPI



**SUPPLEMENTARY FIG. S3.** Time line of GFP expression in the frontal bone postlentiviral delivery. (A, B) Intact frontal and parietal bones demonstrate robust eGFP expression 7 days after lentivirus injection. Fluorescence was predominately seen in the periosteum [*above* (A, B)], coronal suture mesenchyme [*below*, (A)], and dura mater [*below*, (B)]. Periosteal and dural eGFP expression remains at 4 weeks (C) and becomes more patchy in distribution at 8 weeks (D) postlentiviral injection. Cells were counterstained with DAPI (*blue*). Arrowheads highlight reporter activity. Scale bars: 20  $\mu\text{m}$ . GFP, green fluorescent protein; eGFP, enhanced GFP; DAPI, 4',6-diamidino-2-phenylindole.