

Supplementary data.

Title: Survival and new-onset morbidity after critical care admission for acute pancreatitis: a national electronic healthcare record linkage study.

Authors: Chiara Ventre, Sian Nowell, Cat Graham, Doug Kidd, Christos Skouras and Damian J. Mole

Supplementary material includes:

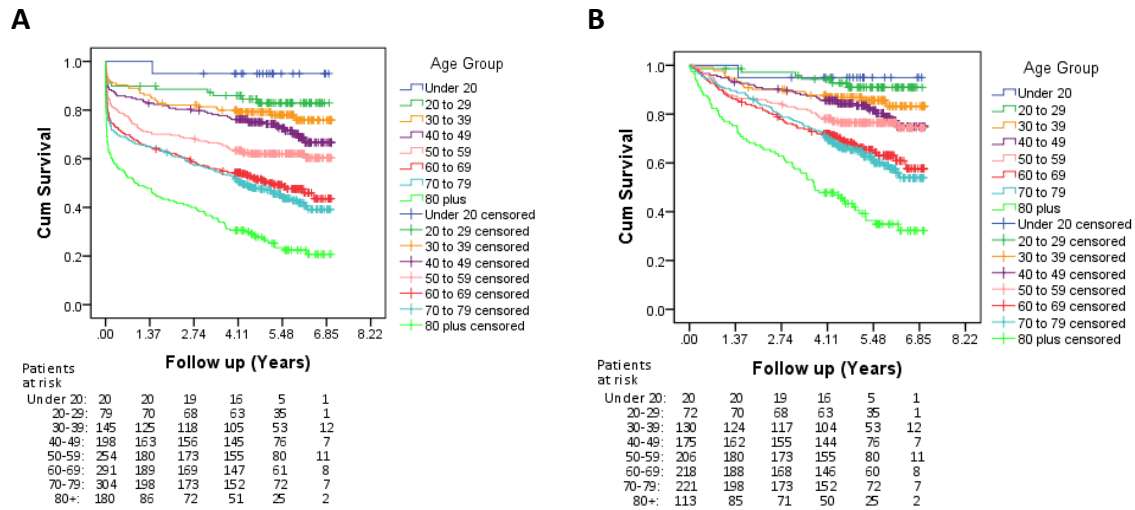
1 table

11 supplementary figures

On 13 pages

Supplementary Table 1. Categorisation of Causes of Death. The ICD-10 categories for cause of death were allocated to six groups as shown.

| Category of death | ICD 10 Code |
|--|---|
| Circulatory/Cardiovascular system | IX Diseases of the circulatory system |
| Digestive/Metabolic System | III Diseases of the blood and blood-forming organs and certain disorders involving the immune mechanism <i>D50-D53 Nutritional anaemias</i> |
| | IV Endocrine, nutritional and metabolic diseases |
| | XI Diseases of the digestive system |
| | XVIII Symptoms, signs and abnormal clinical and laboratory findings, not elsewhere classified <i>R10-R19 Symptoms and Signs involving the digestive system and abdomen</i> |
| Neoplasms | II Neoplasms |
| Respiratory System | X Diseases of the Respiratory System |
| Other | I Certain infectious and parasitic diseases |
| | III Diseases of the blood and blood-forming organs and certain disorders involving the immune mechanism <i>Excluding D50-D53</i> |
| | V Mental and behavioural disorders |
| | VI Diseases of the nervous system |
| | VII Diseases of the eye and adnexa |
| | VIII Diseases of the ear and mastoid process |
| | XII Diseases of the skin and subcutaneous tissue |
| | XIII Diseases of the musculoskeletal system and connective tissue |
| | XIV Diseases of the genitourinary system |
| | XV Pregnancy, childbirth and the puerperium |
| | XVI Certain conditions originating in the perinatal period |
| | XVII Congenital malformations, deformations and chromosomal abnormalities |
| | XVIII Symptoms, signs and abnormal clinical and laboratory findings, not elsewhere classified <i>Excluding R10-R19</i> |
| | XIX Injury, poisoning and certain other consequences of external causes |
| | XX External causes of morbidity and mortality |
| XXI Factors influencing health status and contact with health services | |
| XXII Codes for special purposes | |

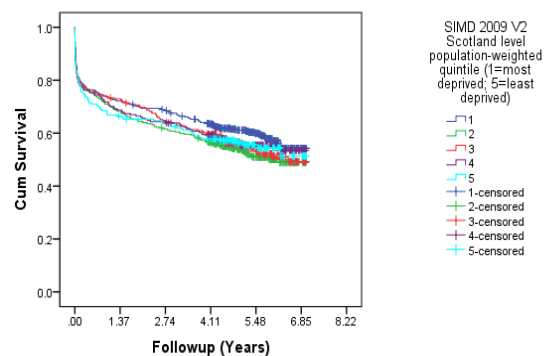


| Pairwise Comparisons – including in hospital deaths | | | | | | | | | | | | | | | | | |
|---|-----------|------------|------|------------|------|------------|------|------------|------|------------|------|------------|------|------------|------|------------|------|
| | Age group | Under 20 | | 20 to 29 | | 30 to 39 | | 40 to 49 | | 50 to 59 | | 60 to 69 | | 70 to 79 | | 80 plus | |
| | | Chi-Square | Sig. | Chi-Square | Sig. | Chi-Square | Sig. | Chi-Square | Sig. | Chi-Square | Sig. | Chi-Square | Sig. | Chi-Square | Sig. | Chi-Square | Sig. |
| Log Rank (Mantel-Cox) | Under 20 | | | 1.614 | .204 | 2.907 | .088 | 4.199 | .040 | 7.380 | .007 | 11.599 | .001 | 13.092 | .000 | 24.091 | .000 |
| | 20 to 29 | 1.614 | .204 | | | .954 | .329 | 3.962 | .047 | 11.683 | .001 | 25.914 | .000 | 32.015 | .000 | 66.499 | .000 |
| | 30 to 39 | 2.907 | .088 | .954 | .329 | | | 1.486 | .223 | 10.898 | .001 | 31.203 | .000 | 40.173 | .000 | 92.223 | .000 |
| | 40 to 49 | 4.199 | .040 | 3.962 | .047 | 1.486 | .223 | | | 5.256 | .022 | 25.194 | .000 | 35.378 | .000 | 92.343 | .000 |
| | 50 to 59 | 7.380 | .007 | 11.683 | .001 | 10.898 | .001 | 5.256 | .022 | | | 8.366 | .004 | 15.589 | .000 | 63.022 | .000 |
| | 60 to 69 | 11.599 | .001 | 25.914 | .000 | 31.203 | .000 | 25.194 | .000 | 8.366 | .004 | | | 1.094 | .296 | 30.182 | .000 |
| | 70 to 79 | 13.092 | .000 | 32.015 | .000 | 40.173 | .000 | 35.378 | .000 | 15.589 | .000 | 1.094 | .296 | | | 21.152 | .000 |
| | 80 plus | 24.091 | .000 | 66.499 | .000 | 92.223 | .000 | 92.343 | .000 | 63.022 | .000 | 30.182 | .000 | 21.152 | .000 | | |

| Pairwise Comparisons | | | | | | | | | | | | | | | | | |
|-----------------------|-----------|------------|------|------------|------|------------|------|------------|------|------------|------|------------|------|------------|------|------------|------|
| | Age group | Under 20 | | 20 to 29 | | 30 to 39 | | 40 to 49 | | 50 to 59 | | 60 to 69 | | 70 to 79 | | 80 plus | |
| | | Chi-Square | Sig. | Chi-Square | Sig. | Chi-Square | Sig. | Chi-Square | Sig. | Chi-Square | Sig. | Chi-Square | Sig. | Chi-Square | Sig. | Chi-Square | Sig. |
| Log Rank (Mantel-Cox) | Under 20 | | | .195 | .659 | 1.212 | .271 | 1.981 | .159 | 3.281 | .070 | 5.997 | .014 | 6.718 | .010 | 15.130 | .000 |
| | 20 to 29 | .195 | .659 | | | 1.730 | .188 | 4.552 | .033 | 7.764 | .005 | 17.852 | .000 | 21.251 | .000 | 49.740 | .000 |
| | 30 to 39 | 1.212 | .271 | 1.730 | .188 | | | .986 | .321 | 4.151 | .042 | 16.184 | .000 | 20.474 | .000 | 59.844 | .000 |
| | 40 to 49 | 1.981 | .159 | 4.552 | .033 | .986 | .321 | | | 1.272 | .259 | 12.308 | .000 | 17.081 | .000 | 60.511 | .000 |
| | 50 to 59 | 3.281 | .070 | 7.764 | .005 | 4.151 | .042 | 1.272 | .259 | | | 5.838 | .016 | 9.458 | .002 | 47.244 | .000 |
| | 60 to 69 | 5.997 | .014 | 17.852 | .000 | 16.184 | .000 | 12.308 | .000 | 5.838 | .016 | | | .326 | .568 | 22.791 | .000 |
| | 70 to 79 | 6.718 | .010 | 21.251 | .000 | 20.474 | .000 | 17.081 | .000 | 9.458 | .002 | .326 | .568 | | | 19.713 | .000 |
| | 80 plus | 15.130 | .000 | 49.740 | .000 | 59.844 | .000 | 60.511 | .000 | 47.244 | .000 | 22.791 | .000 | 19.713 | .000 | | |

Supplementary Figure 1. Survival by age. Kaplan-Meier plots of the proportion of surviving patients over time in years. Patients were categorised by age. Vertical dashes represent right-censored patients. The number of patients remaining at risk at each time point are presented under the chart. Log-rank pair-wise analyses are presented above the corresponding chart **a**. Analyses including in-hospital deaths. **b**. Analyses excluding in-hospital deaths

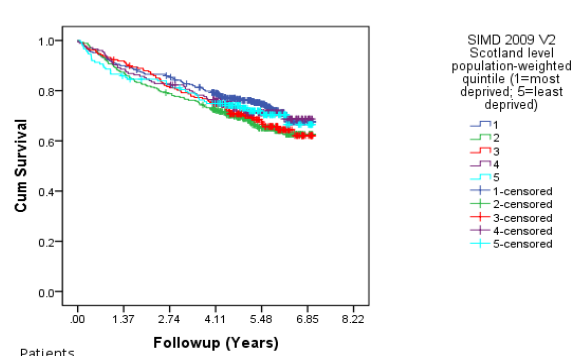
A



Patients at risk:

| | 1 | 2 | 3 | 4 | 5 | |
|----|-----|-----|-----|-----|-----|----|
| 1: | 438 | 316 | 298 | 261 | 134 | 15 |
| 2: | 344 | 235 | 211 | 184 | 93 | 8 |
| 3: | 262 | 190 | 167 | 151 | 75 | 10 |
| 4: | 227 | 156 | 145 | 125 | 57 | 6 |
| 5: | 193 | 127 | 120 | 106 | 46 | 10 |

B



Patients at risk:

| | 1 | 2 | 3 | 4 | 5 | |
|----|-----|-----|-----|-----|-----|----|
| 1: | 349 | 314 | 296 | 259 | 133 | 15 |
| 2: | 269 | 235 | 211 | 184 | 92 | 8 |
| 3: | 208 | 190 | 167 | 151 | 75 | 10 |
| 4: | 175 | 155 | 144 | 124 | 57 | 6 |
| 5: | 149 | 127 | 120 | 106 | 45 | 10 |

Pairwise Comparisons – including in hospital deaths

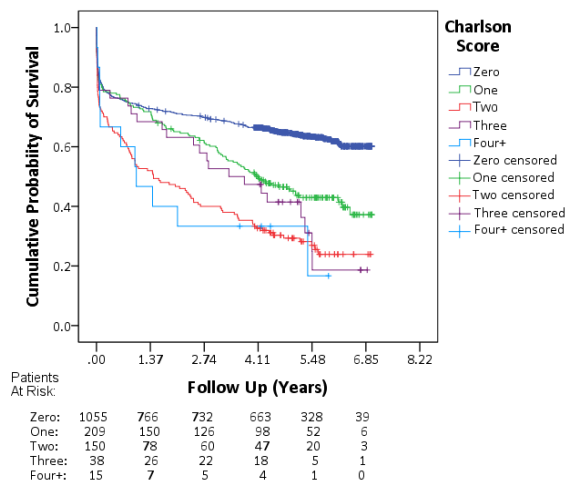
| | | 1 | | 2 | | 3 | | 4 | | 5 | |
|--|---|------------|------|------------|------|------------|------|------------|------|------------|------|
| SIMD 2009 V2 Scotland level population-weighted quintile (1=most deprived; 5=least deprived) | | Chi-Square | Sig. | Chi-Square | Sig. | Chi-Square | Sig. | Chi-Square | Sig. | Chi-Square | Sig. |
| Log Rank (Mantel-Cox) | 1 | | | 3.634 | .057 | 1.801 | .180 | .248 | .618 | .456 | .499 |
| | 2 | 3.634 | .057 | | | .175 | .676 | 1.207 | .272 | .695 | .405 |
| | 3 | 1.801 | .180 | .175 | .676 | | | .447 | .504 | .229 | .632 |
| | 4 | .248 | .618 | 1.207 | .272 | .447 | .504 | | | .030 | .864 |
| | 5 | .456 | .499 | .695 | .405 | .229 | .632 | .030 | .864 | | |

Pairwise Comparisons – excluding in hospital deaths

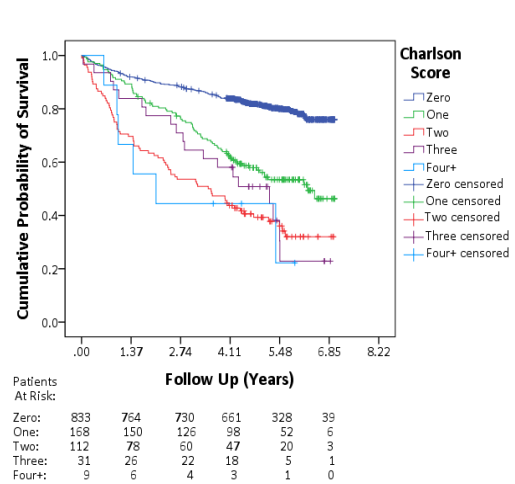
| | | 1 | | 2 | | 3 | | 4 | | 5 | |
|--|---|------------|------|------------|------|------------|------|------------|------|------------|------|
| SIMD 2009 V2 Scotland level population-weighted quintile (1 = most deprived; 5 = least deprived) | | Chi-Square | Sig. | Chi-Square | Sig. | Chi-Square | Sig. | Chi-Square | Sig. | Chi-Square | Sig. |
| Log Rank (Mantel-Cox) | 1 | | | 3.473 | .062 | 1.339 | .247 | .602 | .438 | 1.130 | .288 |
| | 2 | 3.473 | .062 | | | .293 | .588 | .643 | .423 | .205 | .650 |
| | 3 | 1.339 | .247 | .293 | .588 | | | .075 | .784 | .000 | .993 |
| | 4 | .602 | .438 | .643 | .423 | .075 | .784 | | | .075 | .785 |
| | 5 | 1.130 | .288 | .205 | .650 | .000 | .993 | .075 | .785 | | |

Supplementary Figure 2. Survival by Scottish Index of Multiple Deprivation (SIMD) quintile. Kaplan-Meier plots of the proportion of surviving patients over time in years. Patients were categorised by SIMD quintile. Vertical dashes represent right-censored patients. The number of patients remaining at risk at each time point are presented under the chart. Log-rank pair-wise analyses are presented above the corresponding chart **a**. Analyses including in-hospital deaths. **b**. Analyses excluding in-hospital deaths

A



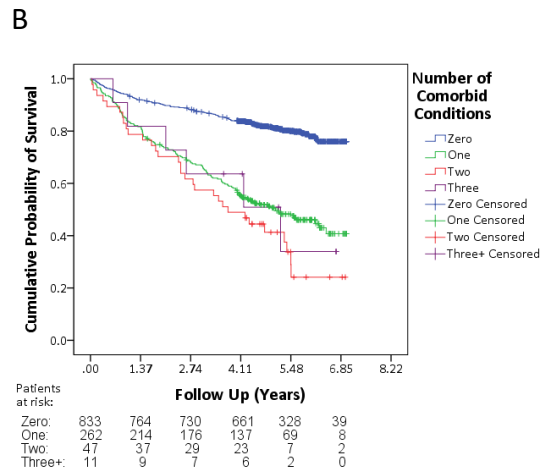
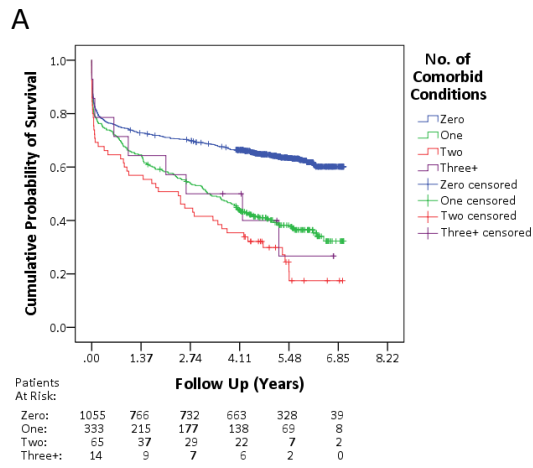
B



| Pairwise Comparisons – including in-hospital deaths | | | | | | | | | | | |
|---|----------------|------------|------|------------|------|------------|------|------------|------|------------|------|
| | Charlson score | 0 | | 1 | | 2 | | 3 | | 4+ | |
| | | Chi-Square | Sig. | Chi-Square | Sig. | Chi-Square | Sig. | Chi-Square | Sig. | Chi-Square | Sig. |
| Log Rank (Mantel-Cox) | 0 | | | 22.485 | .000 | 74.261 | .000 | 12.801 | .000 | 9.426 | .002 |
| | 1 | 22.485 | .000 | | | 13.189 | .000 | 1.166 | .280 | 3.167 | .075 |
| | 2 | 74.261 | .000 | 13.189 | .000 | | | 1.147 | .284 | .038 | .846 |
| | 3 | 12.801 | .000 | 1.166 | .280 | 1.147 | .284 | | | .782 | .376 |
| | 4+ | 9.426 | .002 | 3.167 | .075 | .038 | .846 | .782 | .376 | | |

| Pairwise Comparisons – excluding in hospital deaths | | | | | | | | | | | |
|---|----------------|------------|------|------------|------|------------|------|------------|------|------------|------|
| | Charlson score | 0 | | 1 | | 2 | | 3 | | 4+ | |
| | | Chi-Square | Sig. | Chi-Square | Sig. | Chi-Square | Sig. | Chi-Square | Sig. | Chi-Square | Sig. |
| Log Rank (Mantel-Cox) | 0 | | | 52.398 | .000 | 135.915 | .000 | 35.007 | .000 | 19.238 | .000 |
| | 1 | 52.398 | .000 | | | 12.621 | .000 | 2.097 | .148 | 3.383 | .066 |
| | 2 | 135.915 | .000 | 12.621 | .000 | | | .495 | .482 | .067 | .796 |
| | 3 | 35.007 | .000 | 2.097 | .148 | .495 | .482 | | | .441 | .507 |
| | 4+ | 19.238 | .000 | 3.383 | .066 | .067 | .796 | .441 | .507 | | |

Supplementary Figure 3. Survival by Charlson Score. Kaplan-Meier plots of the proportion of surviving patients over time in years. Patients were categorised by Charlson score. Vertical dashes represent right-censored patients. The number of patients remaining at risk at each time point are presented under the chart. Log-rank pair-wise analyses are presented above the corresponding chart **a.** Analyses including in-hospital deaths. **b.** Analyses excluding in-hospital deaths

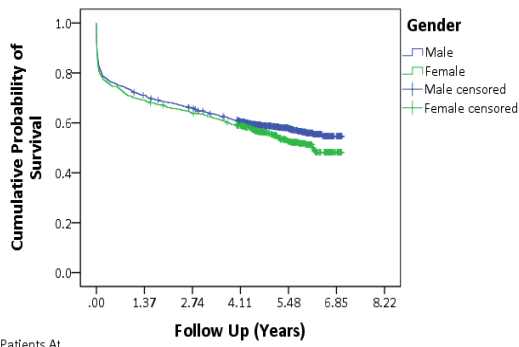


| Pairwise Comparisons – including in hospital deaths | | | | | | | | | |
|---|----|------------|------|------------|------|------------|------|------------|------|
| | | 0 | | 1 | | 2 | | 3+ | |
| Charlson No. of Conditions | | Chi-Square | Sig. | Chi-Square | Sig. | Chi-Square | Sig. | Chi-Square | Sig. |
| Log Rank (Mantel-Cox) | 0 | | | 57.146 | .000 | 40.233 | .000 | 3.749 | .053 |
| | 1 | 57.146 | .000 | | | 4.247 | .039 | .607 | .436 |
| | 2 | 40.233 | .000 | 4.247 | .039 | | | | |
| | 3+ | 3.749 | .053 | .002 | .968 | .607 | .436 | | |

| Pairwise Comparisons – excluding in hospital deaths | | | | | | | | | |
|---|-----|------------|------|------------|------|------------|------|------------|------|
| Charlson No. of Conditions | | .00 | | 1 | | 2 | | 3+ | |
| | | Chi-Square | Sig. | Chi-Square | Sig. | Chi-Square | Sig. | Chi-Square | Sig. |
| Log Rank (Mantel-Cox) | .00 | | | 113.399 | .000 | 69.509 | .000 | 9.289 | .002 |
| | 1 | 113.399 | .000 | | | 2.654 | .103 | .324 | .569 |
| | 2 | 69.509 | .000 | 2.654 | .103 | | | | |
| | 3+ | 9.289 | .002 | .003 | .954 | .324 | .569 | | |

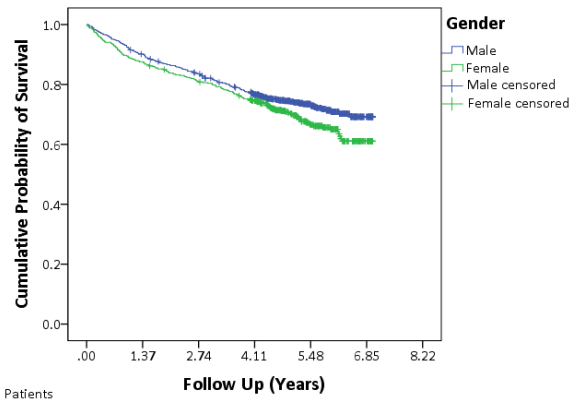
Supplementary Figure 4. Survival by number of conditions contributing to the Charlson Score.

Kaplan-Meier plots of the proportion of surviving patients over time in years. Patients were categorised by the number of conditions contributing to their Charlson score. Vertical dashes represent right-censored patients. The number of patients remaining at risk at each time point are presented under the chart. Log-rank pair-wise analyses are presented above the corresponding chart **a.** Analyses including in-hospital deaths. **b.** Analyses excluding in-hospital deaths

A

Patients At Risk:

| | | | | | | |
|---------|-----|-----|-----|-----|-----|----|
| Male: | 830 | 588 | 542 | 471 | 243 | 27 |
| Female: | 641 | 443 | 407 | 363 | 167 | 22 |

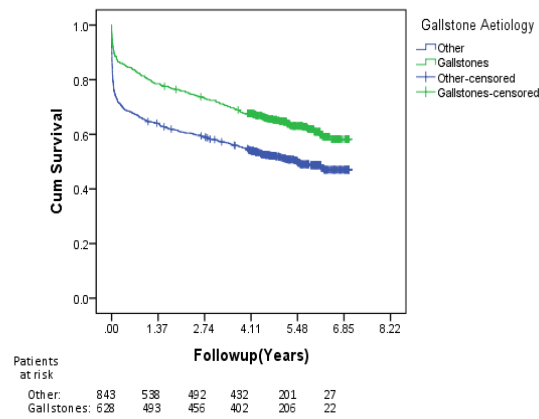
B

Patients At Risk:

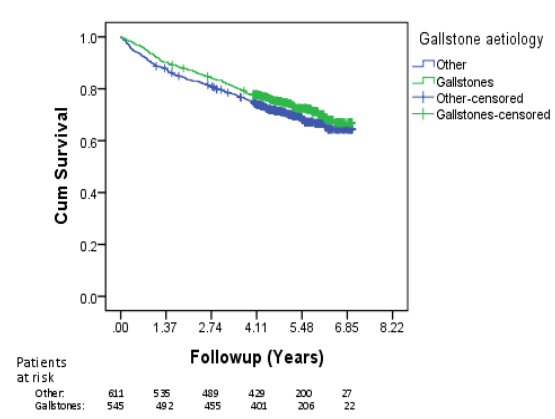
| | | | | | | |
|---------|-----|-----|-----|-----|-----|----|
| Male: | 650 | 584 | 538 | 467 | 242 | 27 |
| Female: | 506 | 443 | 407 | 363 | 167 | 22 |

Supplementary Figure 5. Gender. Kaplan-Meier plots of the proportion of surviving patients over time in years. Patients were categorised by gender. Vertical dashes represent right-censored patients. The number of patients remaining at risk at each time point are presented under the chart. Log-rank analyses are presented to the right of the corresponding chart **a**. Analyses including in-hospital deaths (Log Rank test, $P = 0.134$). **b**. Analyses excluding in-hospital deaths (Log Rank test, $P = 0.049$)

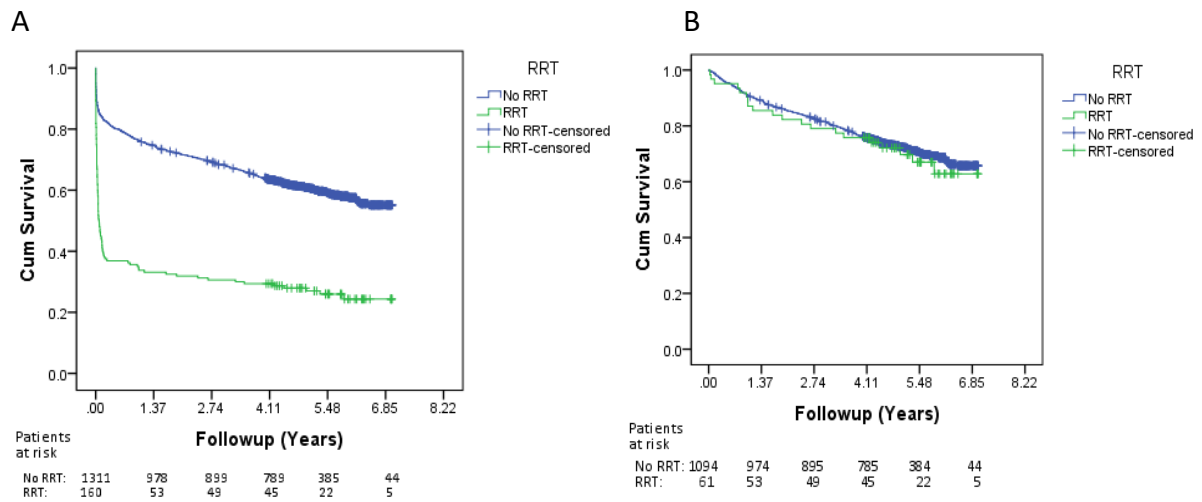
A



B

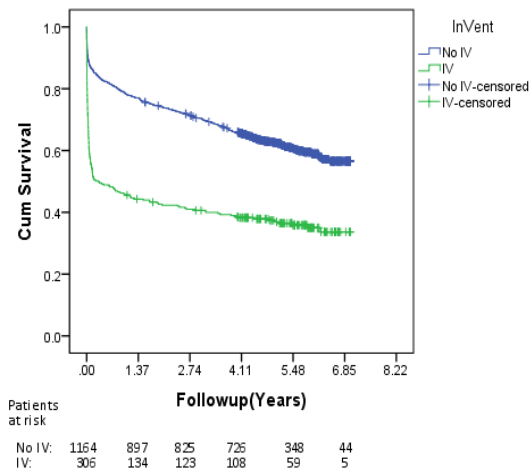


Supplementary Figure 6. Survival by aetiology of pancreatitis. Kaplan-Meier plots of the proportion of surviving patients over time in years. Patients were categorised by aetiology – gallstones or other causes. Vertical dashes represent right-censored patients. The number of patients remaining at risk at each time point are presented under the chart. Log-rank analyses are presented to the right of the corresponding chart **a**. Analyses including in-hospital deaths. (Log Rank test, Gallstones vs Other, $P < 0.001$) **b**. Analyses excluding in-hospital deaths (Log Rank test, Gallstones vs Other, $P = 0.139$)

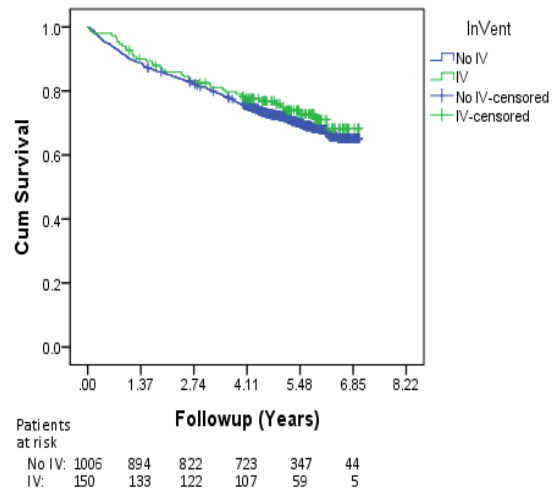


Supplementary Figure 7. Survival comparing use of renal replacement therapy (RRT). Kaplan-Meier plots of the proportion of surviving patients over time in years. Patients were categorised by whether they required RRT during the index admission. Vertical dashes represent right-censored patients. The number of patients remaining at risk at each time point are presented under the chart. Log-rank analyses are presented to the right of the corresponding chart **a**. Analyses including in-hospital deaths (Log Rank test RRT vs no RRT, $P < 0.001$). **b**. Analyses excluding in-hospital deaths (Log Rank test RRT vs no RRT, $P = 0.634$).

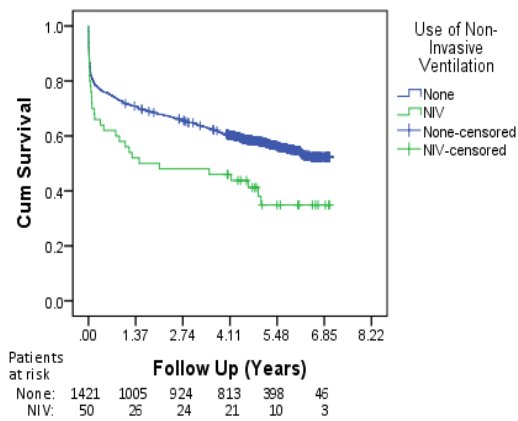
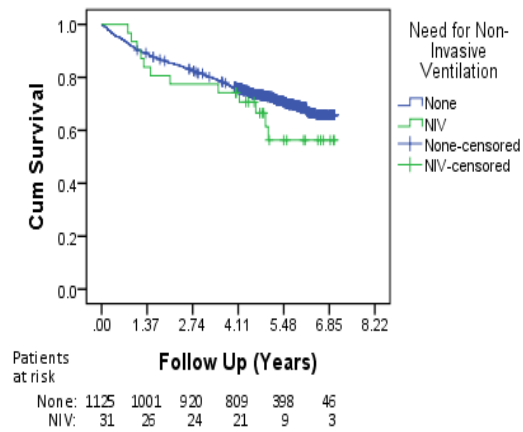
A



B

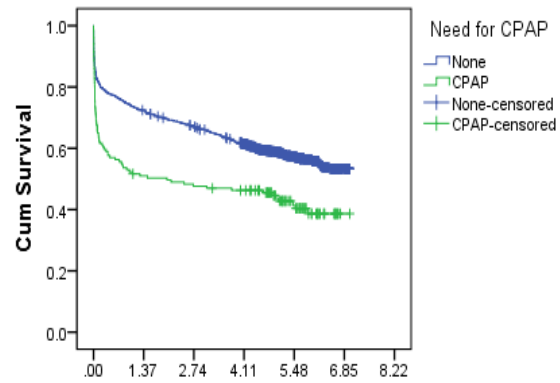


Supplementary Figure 8. Survival according to use of invasive ventilation. Kaplan-Meier plots of the proportion of surviving patients over time in years. Patients were categorised by whether they required invasive ventilation during the index admission. Vertical dashes represent right-censored patients. The number of patients remaining at risk at each time point are presented under the chart. Log-rank analyses are presented to the right of the corresponding chart **a**. Analysis including in-hospital deaths (Log Rank test inv. vent vs no inv. vent, $P < 0.001$). **b**. Analysis excluding in-hospital deaths (Log Rank test inv. vent vs no inv. vent, $P = 0.428$).

A**B**

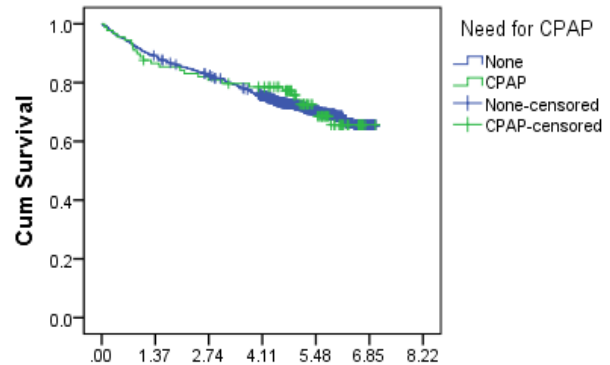
Supplementary Figure 9. Use of non-invasive ventilation (NIV). Kaplan-Meier plots of the proportion of surviving patients over time in years. Patients were categorised by whether or not they required NIV during the index admission. Vertical dashes represent right-censored patients. The number of patients remaining at risk at each time point are presented under the chart. Log-rank analyses are presented to the right of the corresponding chart **a**. Analyses including in-hospital deaths (Log Rank test NIV vs no NIV, $P = 0.008$). **b**. Analysis excluding in-hospital deaths (Log Rank test NIV vs no NIV, $P = 0.301$)

A



| Patients at risk | Follow Up (Years) | | | | | |
|------------------|-------------------|------|------|------|------|------|
| | .00 | 1.37 | 2.74 | 4.11 | 5.48 | 6.85 |
| None: | 1320 | 955 | 877 | 767 | 373 | 48 |
| CPAP: | 151 | 76 | 71 | 67 | 34 | 1 |

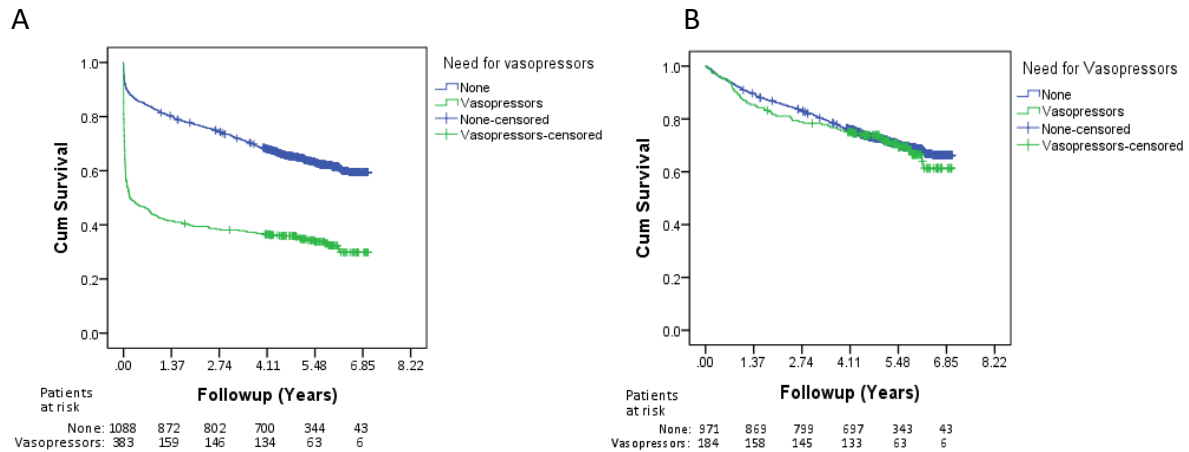
B



| Patients at risk | Follow Up (Years) | | | | | |
|------------------|-------------------|------|------|------|------|------|
| | .00 | 1.37 | 2.74 | 4.11 | 5.48 | 6.85 |
| None: | 1067 | 951 | 873 | 763 | 372 | 48 |
| CPAP: | 89 | 76 | 71 | 67 | 34 | 1 |

Supplementary Figure 10. Survival according to use of continuous positive airway pressure (CPAP).

Kaplan-Meier plots of the proportion of surviving patients over time in years. Patients were categorised by whether they required CPAP during the index admission. Vertical dashes represent right-censored patients. The number of patients remaining at risk at each time point are presented under the chart. Log-rank analyses are presented to the right of the corresponding chart **a**. Analyses including in-hospital deaths (Log Rank test CPAP vs no CPAP, $P < 0.001$). **b**. Analysis excluding in-hospital deaths (Log Rank test CPAP vs no CPAP, $P = 0.930$)



Supplementary Figure 11. Survival according to use of vasopressors. Kaplan-Meier plots of the proportion of surviving patients over time in years. Patients were categorised by whether they required vasopressors during the index admission. Vertical dashes represent right-censored patients. The number of patients remaining at risk at each time point are presented under the chart. Log-rank analyses are presented above the corresponding chart **a**. Analyses including in-hospital deaths (Log Rank test Vasopressors vs no Vasopressors, $P < 0.001$). **b**. Analysis excluding in-hospital deaths (Log Rank test Vasopressors vs no Vasopressors, $P = 0.579$)