

## Supplementary Figures:

### **CBL-interacting protein kinase 25 contributes to root meristem development**

Mukesh Kumar Meena, Niraj Kumar Vishwakarma, Vineeta Tripathi, Debasis Chattopadhyay\*

National Institute of Plant Genome Research, Aruna Asaf Ali Marg, New Delhi 110067, India

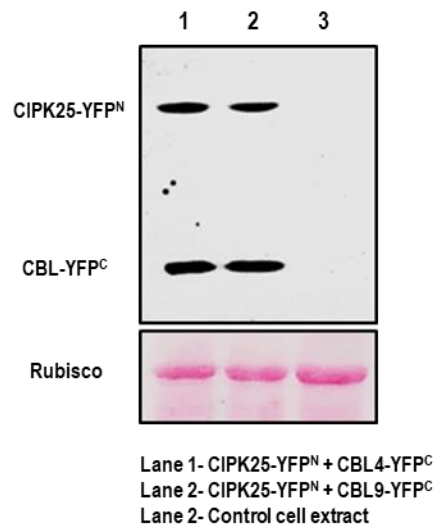
To whom correspondence should be addressed. Email: [debasis@nipgr.ac.in](mailto:debasis@nipgr.ac.in)

### **This file includes:**

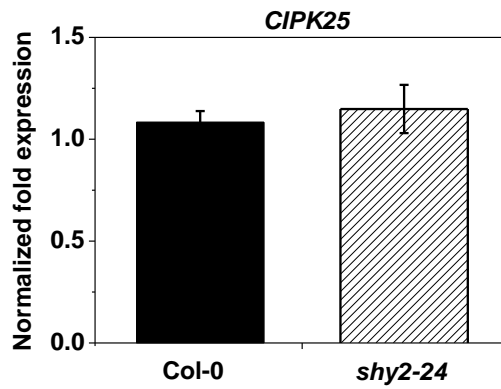
**Supplemental Figure S1.** Detection of YFP<sup>N</sup>-CIPK25, CBL4-YFP<sup>C</sup> and CBL9-YFP<sup>C</sup> fusion proteins in BiFC assay.

**Supplemental Figure S2.** qRT-PCR analysis of the expression levels of *CIPK25* in *shy2-24* line.

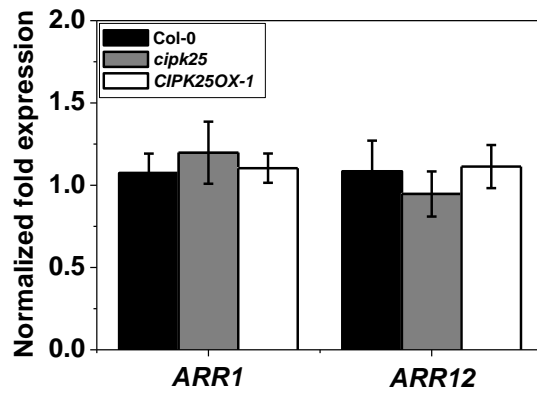
**Supplemental Figure S3.** Relative transcript abundance of *ARR1* and *ARR12* in *cipk25* and *CIPK25OX* seedlings.



**Fig. S1.** Detection of YFP<sup>N</sup>-CIPK25, CBL4-YFP<sup>C</sup> and CBL9-YFP<sup>C</sup> fusion proteins in BIFC assay with polyclonal anti-GFP antibody. *Agrobacterium tumefaciens* (GV3101) infiltrated tissue was loaded as control. Rubisco detected by Ponceau S staining of the blot.



**Fig. S2.** Normalized fold expression of *CIPK25* in roots of 5 day-old Col-0 and *shy2-24* seedlings as determined by qRT-PCR. *ACTIN2* expression was used as internal control. Values are mean  $\text{SD}\pm$  of four biological replicates with 15 seedlings each.



**Fig. S3.** Normalized fold expression of Arabidopsis type B cytokinin response regulators *ARR1* and *ARR12* were analyzed by qRT-PCR in roots of 5 day-old Col-0, *cipk25* and *CIPK25OX-1* seedlings. *ACTIN2* expression was used for normalization. Values are mean  $\pm$  SD of four biological replicates with 15 seedlings each.