

OMTN, Volume 14

Supplemental Information

An Analysis of the Expression and Association with Immune Cell Infiltration of the cGAS/STING Pathway in Pan-Cancer

Xiang An, Yuanyuan Zhu, Tongsen Zheng, Guangyu Wang, Minghui Zhang, Jiade Li, Hongbo Ji, Shijun Li, Shucui Yang, Dandan Xu, Zhiwei Li, Tianzhen Wang, Yan He, Lei Zhang, Weiwei Yang, Ran Zhao, Dapeng Hao, and Xiaobo Li

Figure S1

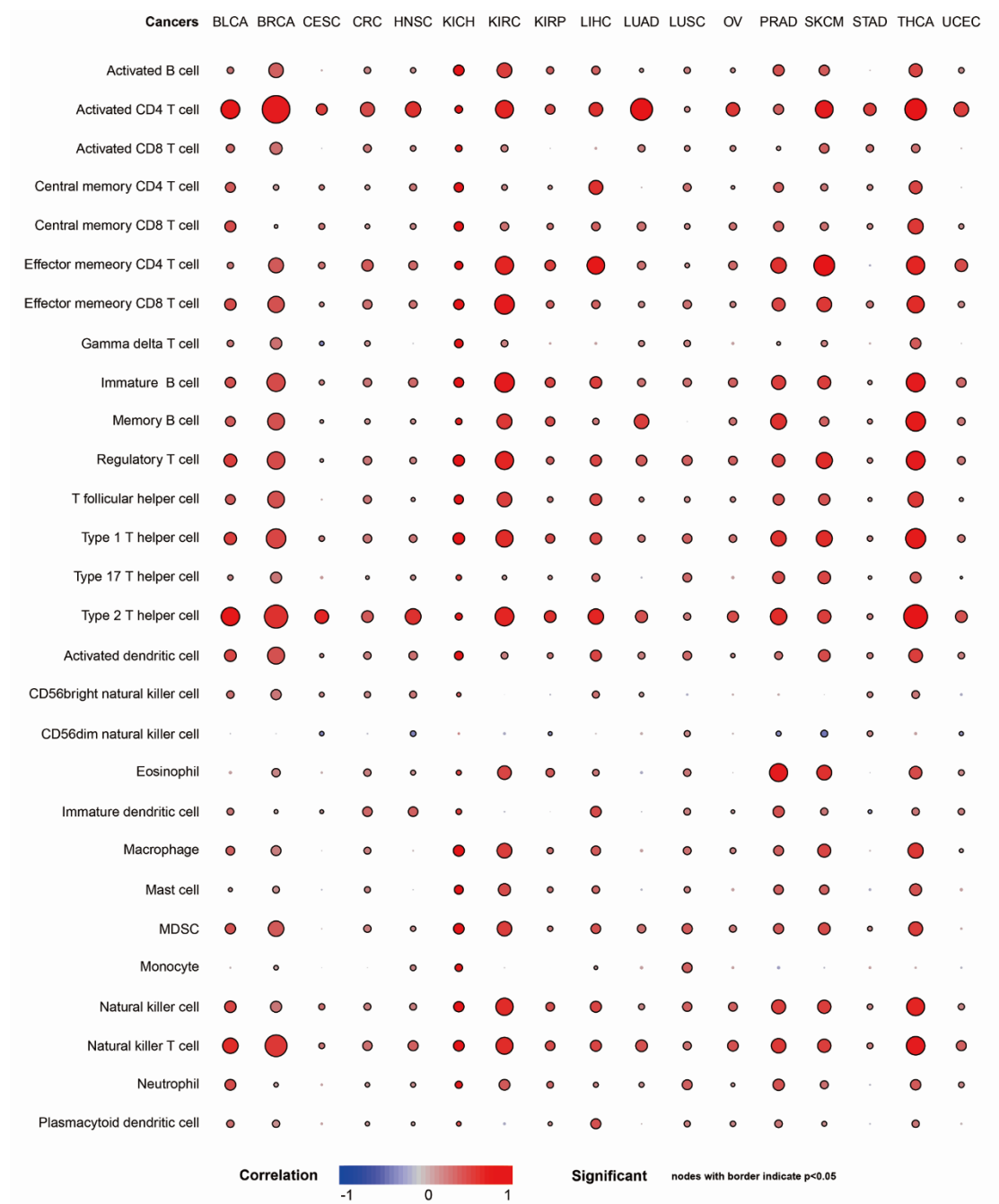


Figure S1: The correlation between the expression of MB21D1 and the infiltration of immune cells.

Figure S2



Figure S2: The correlation between the expression of TMEM173 and the infiltration of immune cells.

Figure S3



Figure S3: The correlation between the expression of TBK1 and the infiltration of immune cells.

Figure S4



Figure S4: The correlation between the expression of IRF3 and the infiltration of immune cells.

Figure S5

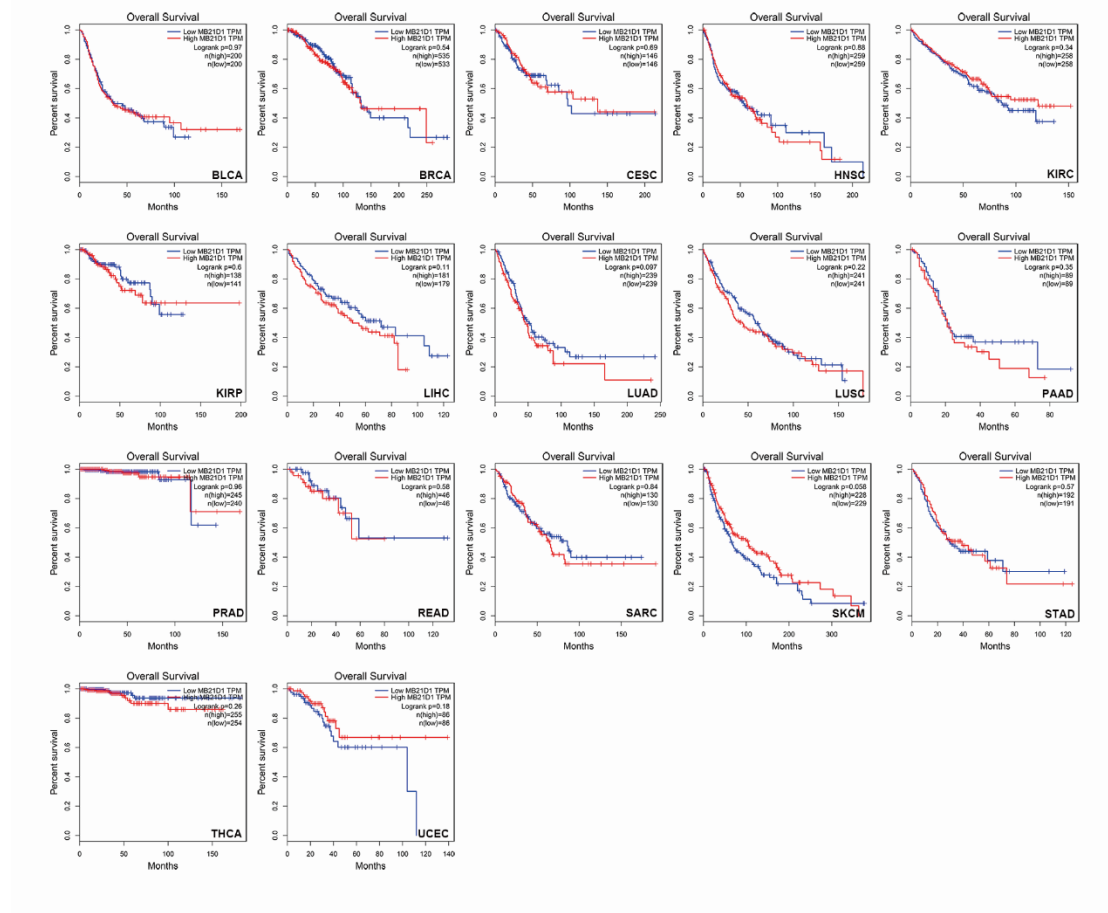


Figure S5: The correlation between MB21D1 expression and prognosis in some other tumors (Log-rank test, $p > 0.05$).

Figure S6

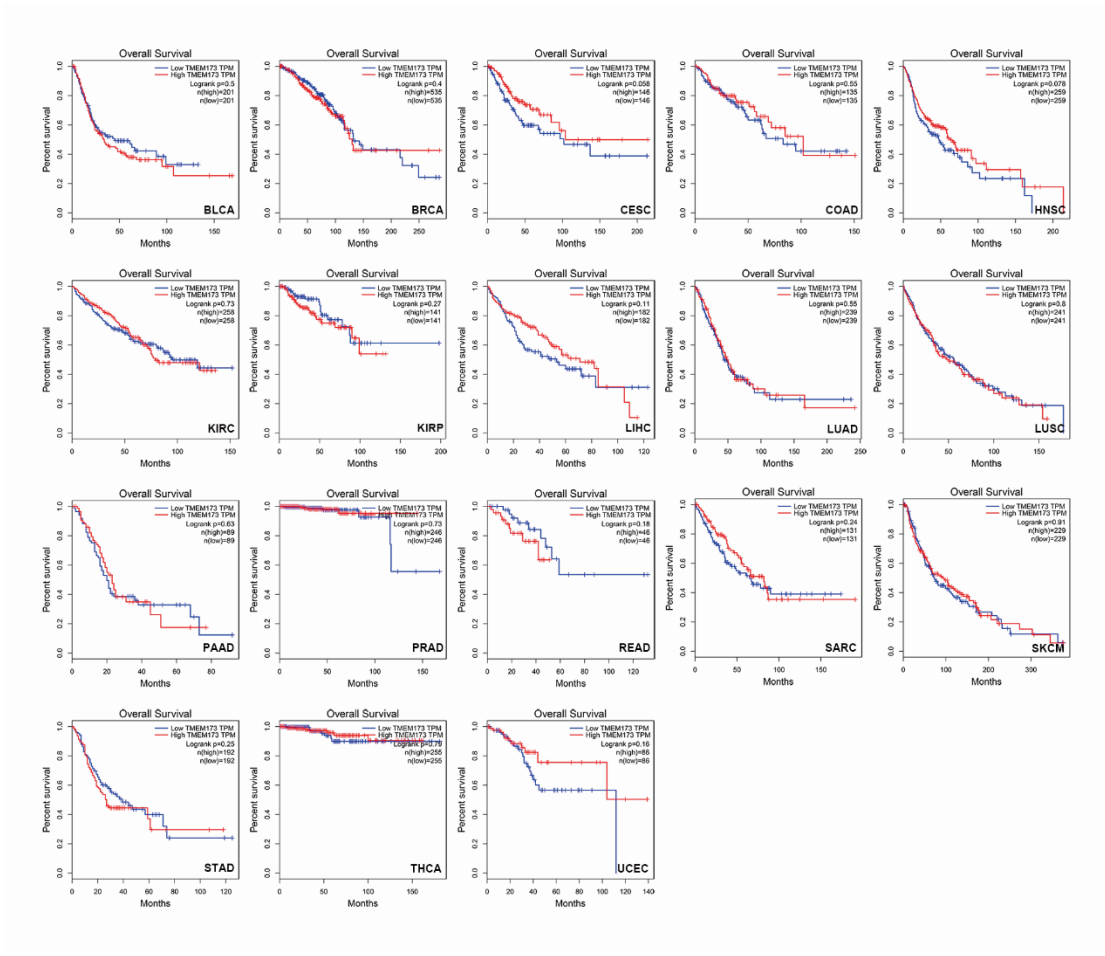


Figure S6: The correlation between TMEM173 expression and prognosis in some other tumors (Log-rank test, $p > 0.05$).

Figure S7

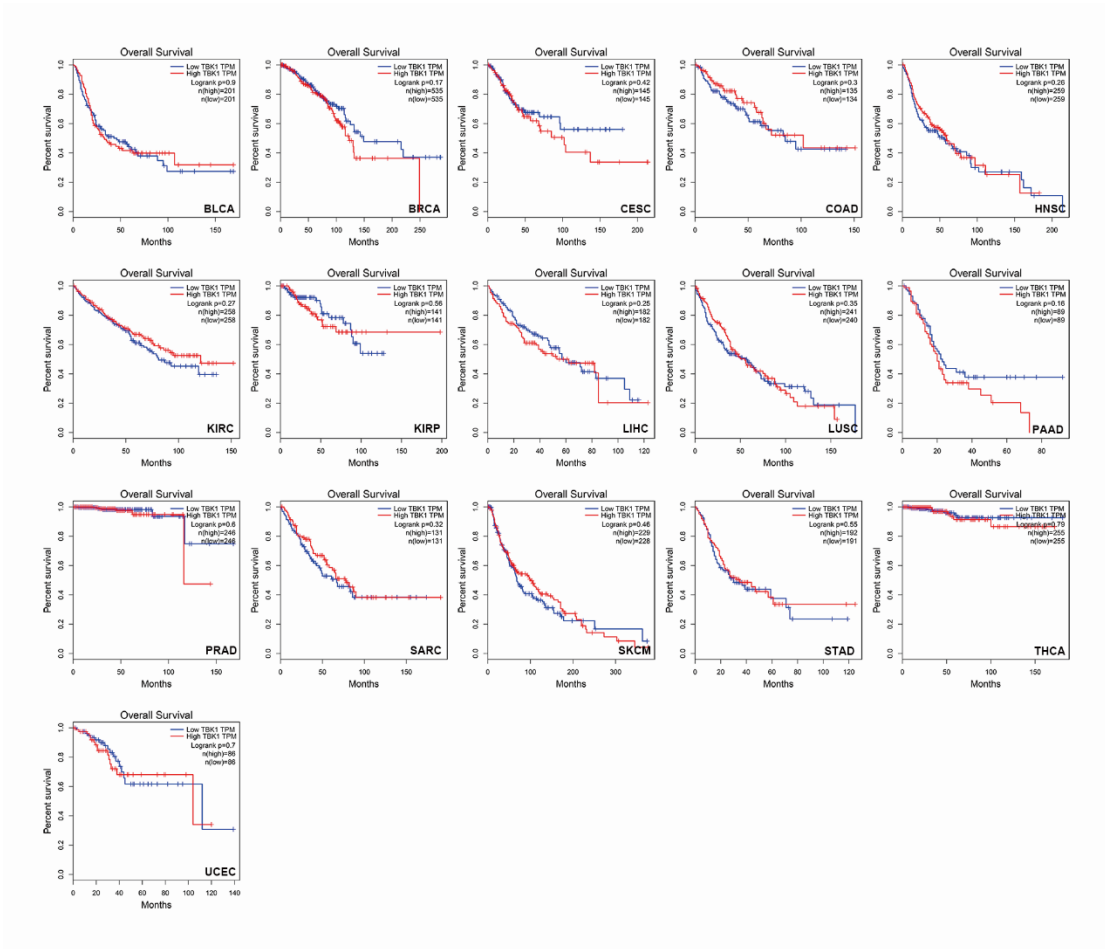


Figure S7: The correlation between TBK1 expression and prognosis in some other tumors (Log-rank test, $p > 0.05$).

Figure S8

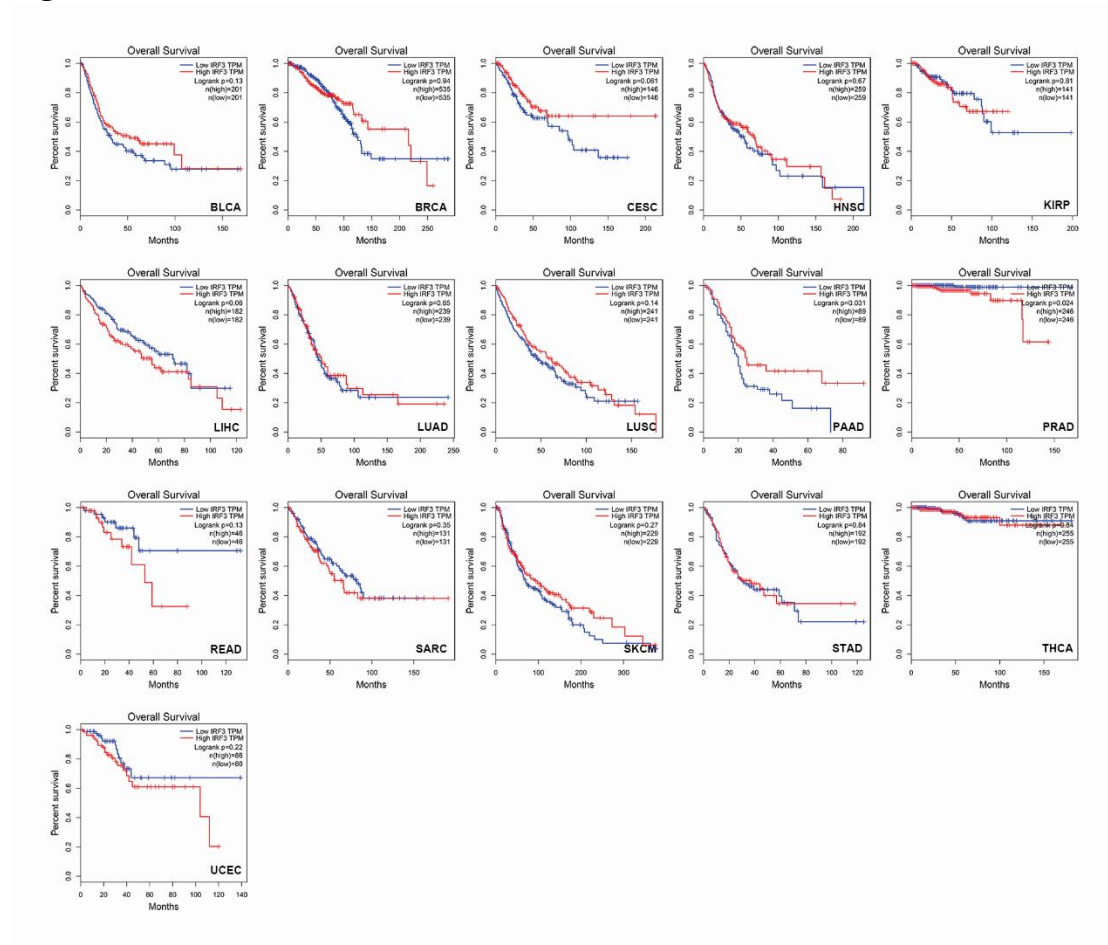


Figure S8: The correlation between IRF3 expression and prognosis in some other tumors (Log-rank test, $p > 0.05$).