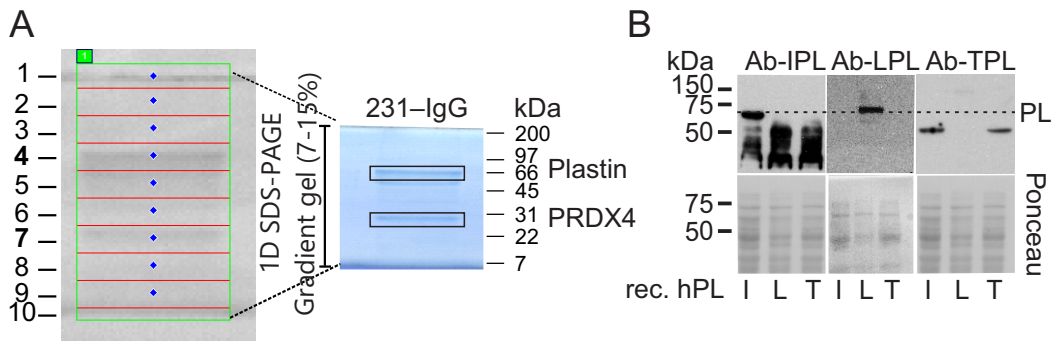


Supplemental Figure 1.



Supplemental Figure 1. Identification of osteoclastogenic factors in MDA-MB-231 conditioned medium. A) MDA-MB-231 CM-derived osteoclastogenic proteins were immunoprecipitated by IgG, separated on a gradient 7-15% SDS-PAGE gel, divided into 10 sections, and digested with trypsin. Mass spectrometry identified PRDX4 (validated in the previous study) and plastin as highly expressed candidates. This panel is identical to published as Fig. 1C in Rafiei et al, *Cancer Letters*, 2015 Jun 1;361(2):262-70 (reused with permission). B) Antibody validation for plastin isoforms. Recombinant human plastin-1, 2 and 3 (rhPL I, L, T) were immunoblotted with antibodies for I, L and T-plastin (upper gels, dashed line – predicted MW of plastins), equal loading was visualized by Ponceau staining (lower gels).