

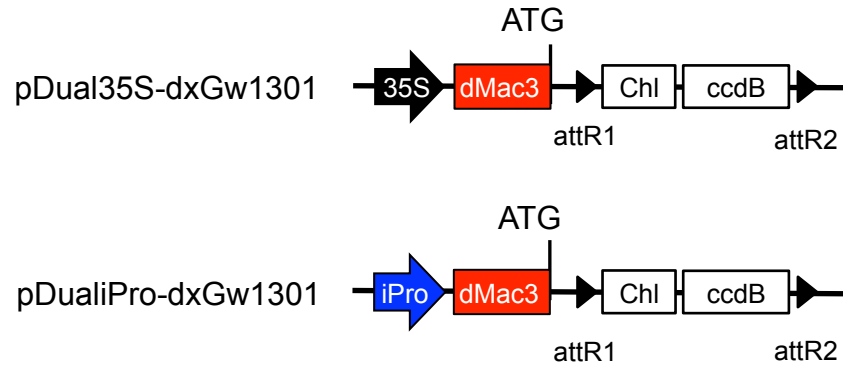
Table A. Ratio of mutation in the transformant callus harboring pdxTALENs.

dMac3	mutant on 1 allele	mutant on 2 alleles	WT	Total
-	11 (6.6%)	28 (16.8%)	128	167
+	34 (20.0%)	37 (21.8%)	99	170

Table B. Ratio of mutation in the transformant callus harboring piProdxTALENs.

glucocorticoid	mutant on 1 allele	mutant on 2 alleles	WT	total
-	0	0	96	96
+	64 (60.4%)	0	42	106

(A)



(B)

35S
promoter

CATGGAGTCAAAGATTCAAATAGAGGACCTAACAGAACTCG
CCGTAAAGACTGGCGAACAGTTCATACAGAGTCTCTTACGA
CTCAATGACAAGAAGAAAATCTTCGTCAACATGGTGGAGCA
CGACACACTTGTCTACTCCAAAAATATCAAAGATACAGTCT
CAGAAGACCAAAGGGCAATTGAGACTTTTCAACAAAGGGTA
ATATCCGGAAACCTCCTCGGATTCCATTGCCAGCTATCTG
TCACTTTATTGTGAAGATAGTGGAAAAGGAAGGTGGCTCCT
ACAAATGCCATCATTGCGATAAAGGAAAGGCCATCGTTGAA
GATGCCTCTGCCGACAGTGGTCCCAAAGATGGACCCCACC
CACGAGGAGCATCGTGGAAAAGAAGACGTTCCAACCACGT
CTTCAAAGCAAGTGGATTGATGTGATATCTCCACTGACGTA
AGGGATGACGCACAATCCCACTATCCTTCGCAAGACCCTTC
CTCTATATAAGGAAGTTCATTTTCATTTGGAGAGAACACGGG
GGACTCTTGACCTCTAGT **AAGACTAAAGAGAGCTTTTTCAT**
ACCAAAGAAGTACAACAAAAGATTTGCTCCTCATTTTCTGA
ATCCTGGGACTCTCTAGCCTGTAGAAGAAGAAAGGCAGGAA
TTTCAGCTCAAGAGAACAGATCACAATATTTACCCACGGCA
CTGTCTCGCAAT **ATG**AGATCTGGTCTAGAGTTATCAACAAG
TTTGTACAAAAAAGCTGAACGAGAAACGTAAAATGATATAA
ATATCAATATATTAAATTAGATTTTGCATAAAAAACAGACT
ACATAATACTGTAAACACAACATATCCAGTCACTATGCAT

dMac3

attR1

initiation codon

(C)

iPromoter CATGCCGGTTCGACTCTAAAGGATCCGGGTGACAGCCCTCCG
ACGGGTGACAGCCCTCCGACGGGTGACAGCCCTCCGAATTC
AAGAGGATCCGGGTGACAGCCCTCCGACGGGTGACAGCCCT
CCGACGGGTGACAGCCCTCCGAATTCGAGCTCGGTA^TCCGG
GGATCTGTCGACCTCGATCGAGATCTTCGCAAGACCCTTCC
TCTATATAAGGAAGTTCATTTTCATTTGGAGAGGACACGCTG
AAGCTAGTCGACTCTAGCATT^TTAAAT^{AAGACTAAAGAGAGC}
TTTTTCATACCAAAGAAGTACAACAAAAGATTTGCTCCTCA
TTTTCTGAATCCTGGGACTCTCTAGCCTGTAGAAGAAGAAA
GGCAGGAATTTCAAGCTCAAGAGAACAGATCACAAATATTTAC
CCACGGCACTGTCTCGCAAT^{ATG}TGCGGACGTATTCTAGAG
TTATCAACAAGTTTGTACAAAAAAGCTGAACGAGAAACGTA
AAATGATATAAATATCAATATATTAAATTAGATTTTGCATA
AAAAACAGACTACATAATACTGTAAAACACAACATATCCAG
TCACTATGCAT

dMac3

attR1

initiation codon

Fig A. Details of pDual35S-dxGw1301 and pDualiPro-dxGw1301.

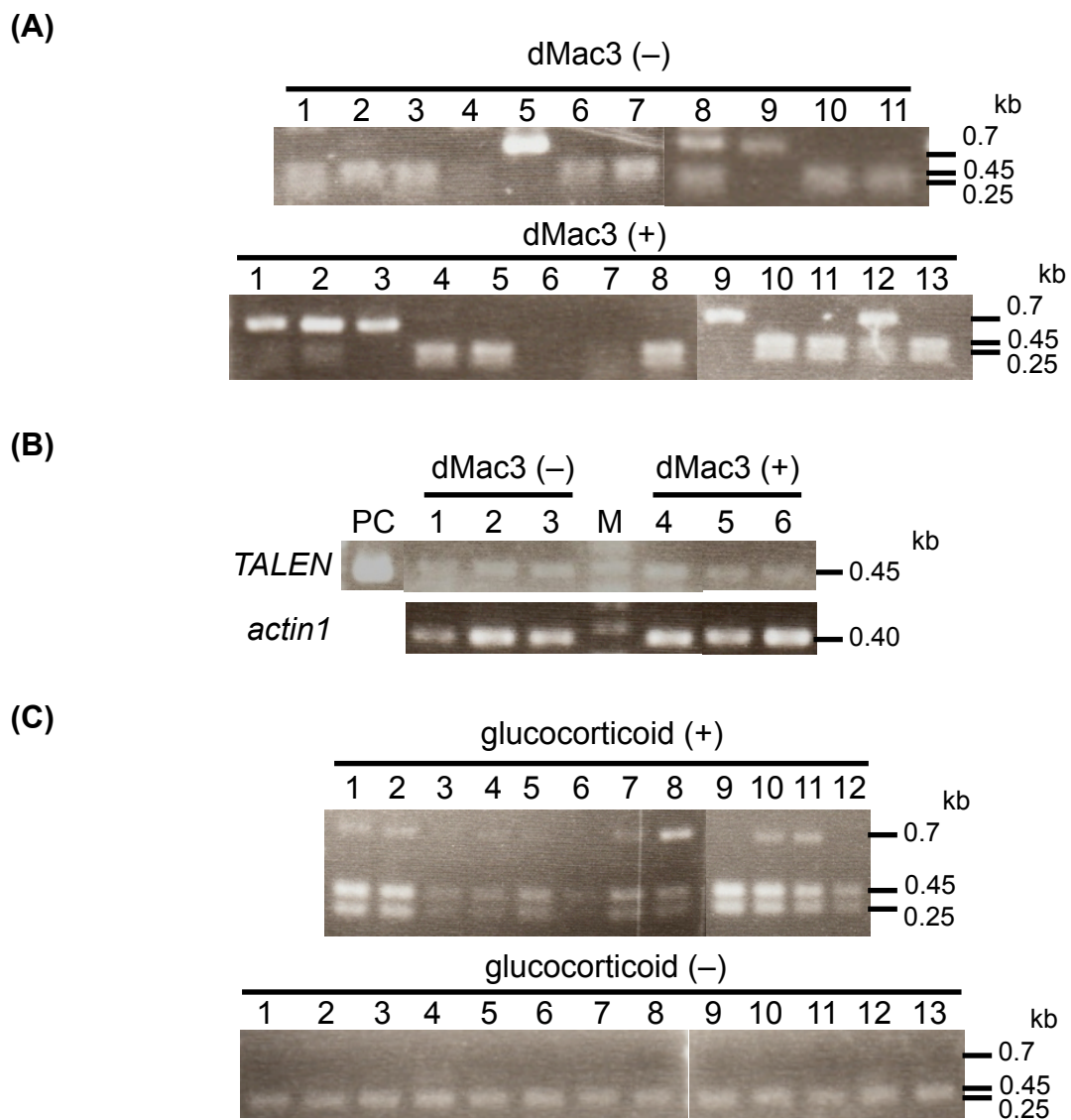


Fig B. Detection of targeted mutation.