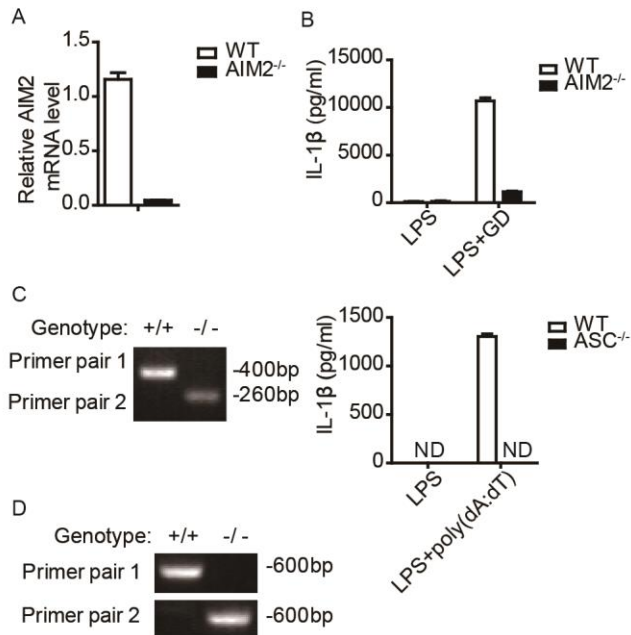


1 Supplemental Data



2

3 **Supplementary Figure S1. Identification of AIM2-, ASC- and Caspase1-deficient** 4 **mice.**

5 (A) Quantitative PCR analysis of the relative AIM2 mRNA levels between the
6 AIM2^{-/-} and WT mice. (B) Production of IL-1β in LPS-primed BMDCs
7 transfected with 1.5 μg/ml genomic DNA for 6 h. (C) Genotyping of ASC
8 knockout mice was carried out by PCR of tail biopsy samples, and production of
9 IL-1β was measured in LPS-primed BMDCs transfected with 1.5 μg/ml
10 poly(dA:dT) for 6 h. (D) Genotyping of Caspase-1 knockout mice was carried
11 out by PCR of the tail biopsy samples.

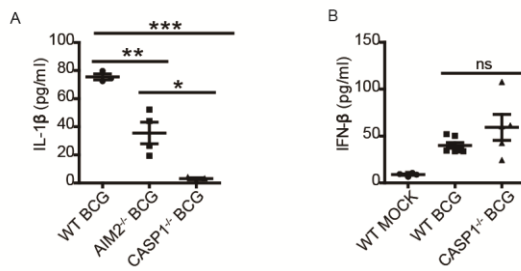
12

13

14

15

16



17

18 **Supplementary Figure S2. Production of IL-1β and IFN-β in Caspase-1-deficient**

19 **mice upon BCG infection.**

20 (A) Levels of IL-1β in the sera of WT, AIM2^{-/-} and Caspase-1^{-/-} mice upon BCG

21 infection. (B) Levels of IFN-β in the sera of WT and Caspase-1^{-/-} mice with or

22 without the BCG infection. The results are shown as the mean ±SEM. *p < 0.05,

23 **p < 0.01, ***p < 0.001 by Student's t-test.

24

25

26

27

28

29

30

31

32

33

34

35

36

37

38

39

40

41

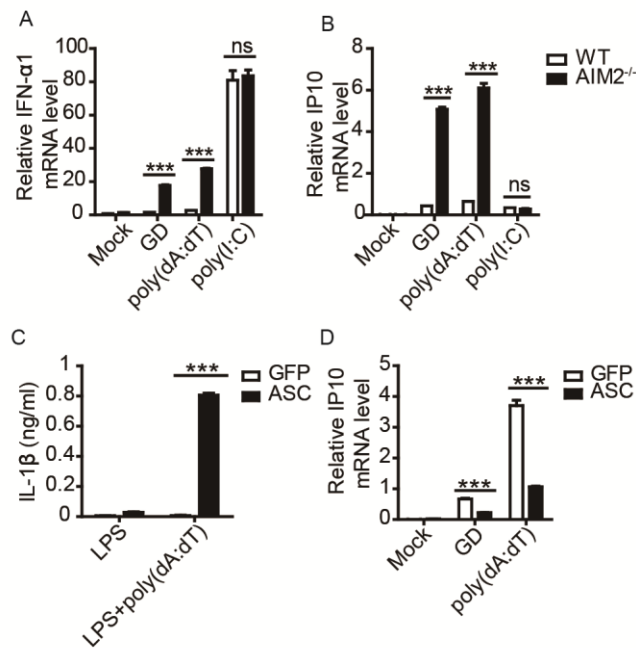
42

43

44

45

46

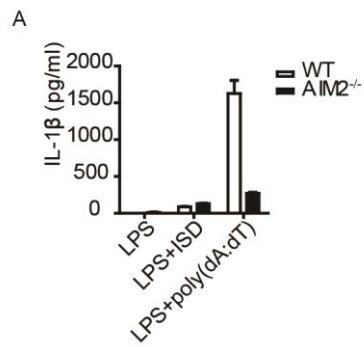


48

49 **Supplementary Figure S3. Induction of related ISG upon stimulation with**
 50 **B-form DNA in the AIM2 knockout or ASC overexpression background.**

51 (A) BMDCs that were isolated from WT and AIM2^{-/-} mice were stimulated with
 52 poly(dA:dT) (1.5 μg/ml), genomic DNA (1.5 μg/ml) and poly(I:C) (2 μg/ml), and
 53 IFN-α1 was measured by RT-qPCR 8 h after transfection. (B) BMDCs that were
 54 isolated from WT and AIM2^{-/-} mice were stimulated with poly(dA:dT) (1.5 μg/ml),
 55 genomic DNA (1.5 μg/ml) and poly(I:C) (2 μg/ml), and IP10 was measured by
 56 RT-qPCR 8 h after transfection. (C) Production of IL-1β in LPS-primed RAW-GFP
 57 and RAW-ASC cells that were transfected with 1.5 μg/ml poly(dA:dT) for 6 h. (D)
 58 RAW-GFP and RAW-ASC cells were stimulated with genomic DNA (1.5 μg/ml)
 59 and poly(dA:dT) (1.5 μg/ml), and IP10 was measured by RT-qPCR 8 h after
 60 transfection. The results are shown as the mean ±SEM. ***p<0.001 by Student's
 61 t-test.

62



63

64 **Supplementary Figure S4. ISD can not activate the AIM2 inflammasome**
65 **signaling pathway.**

66 (A) Production of IL-1 β in LPS-primed BMDMs that were transfected with 1.5
67 μ g/ml poly(dA:dT) and ISD for 6 h.

68

69

70