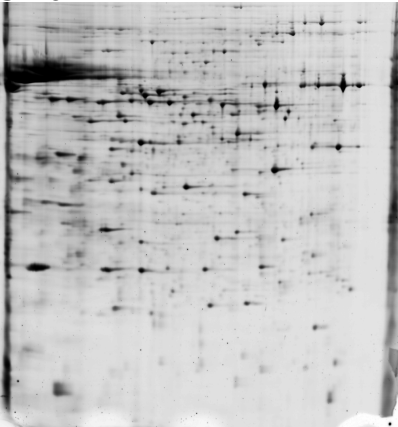


File S2:

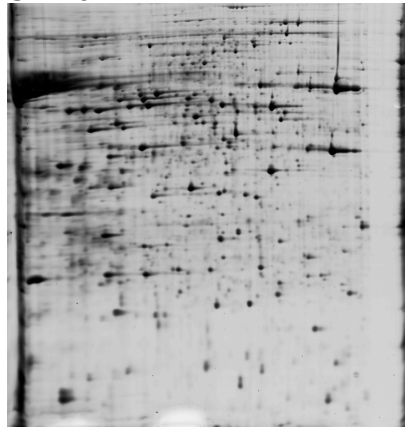
All 2-D gels for sperm samples analysed in our experiment are shown below. These comprise 9 gels (8 biological + 1 technical replicates) for *Mytilus edulis* and 11 gels (10 biological + 1 technical replicates) for *M. galloprovincialis* samples.

Mytilus edulis

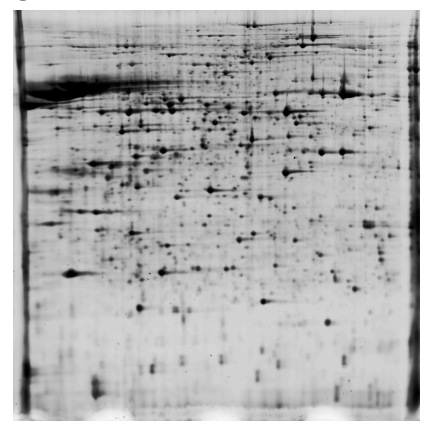
SW6



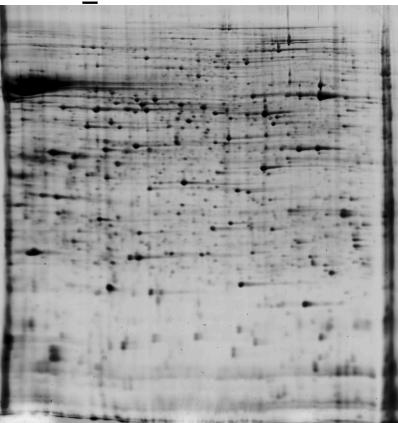
SW10



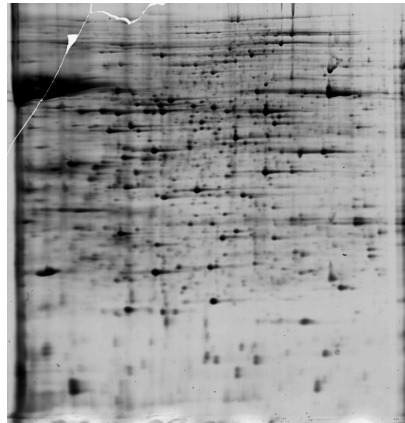
SW14



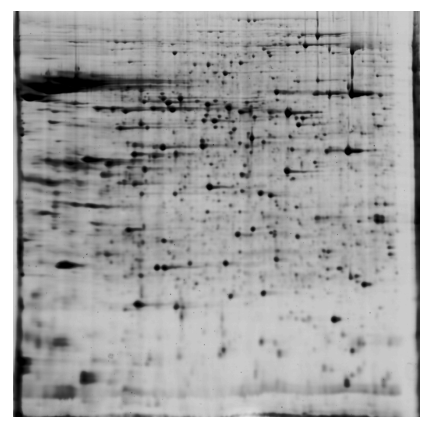
SW14_REP



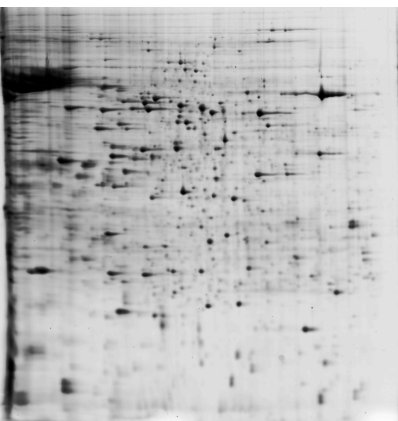
SW15



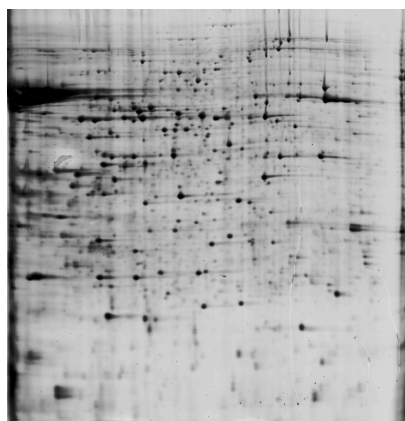
SW16



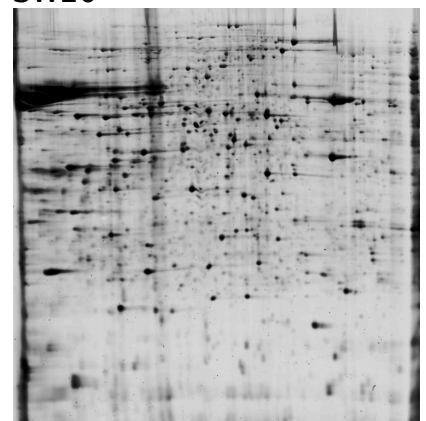
SW18



SW19

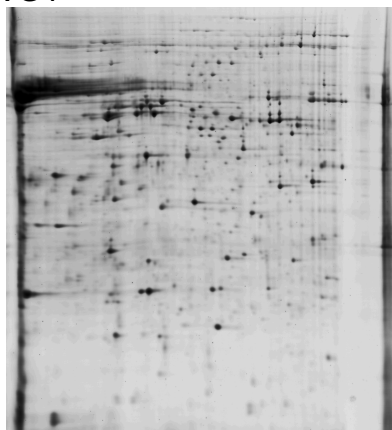


SW20



Mytilus galloprovincialis

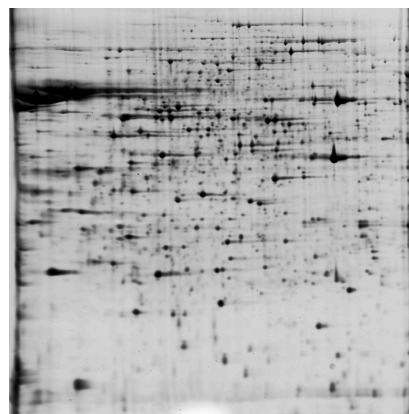
VG4



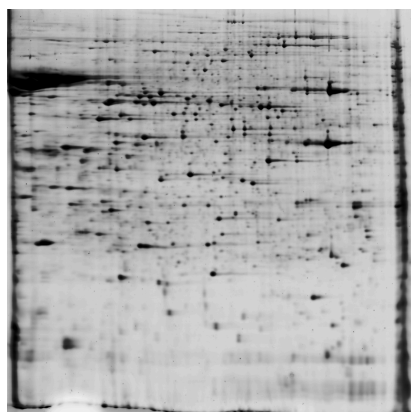
VG5



VG19



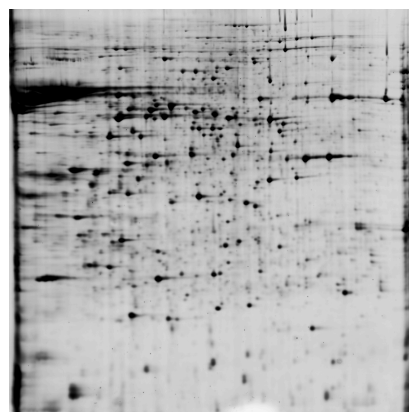
VG19_REP



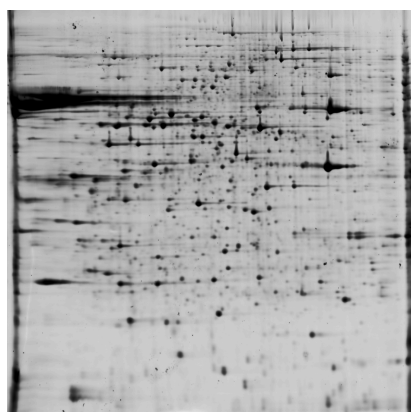
VG23



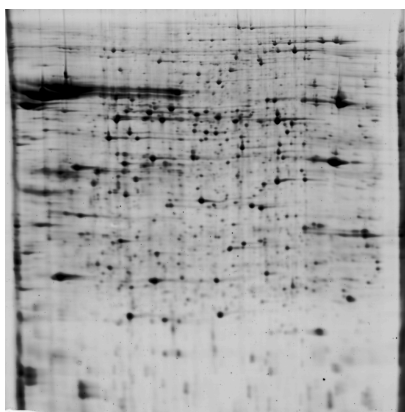
VG24



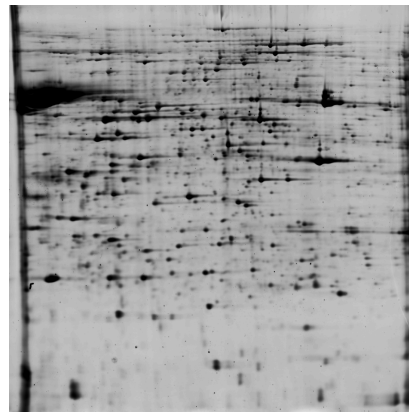
VG26



VG29



VG34



VG35



VG36

