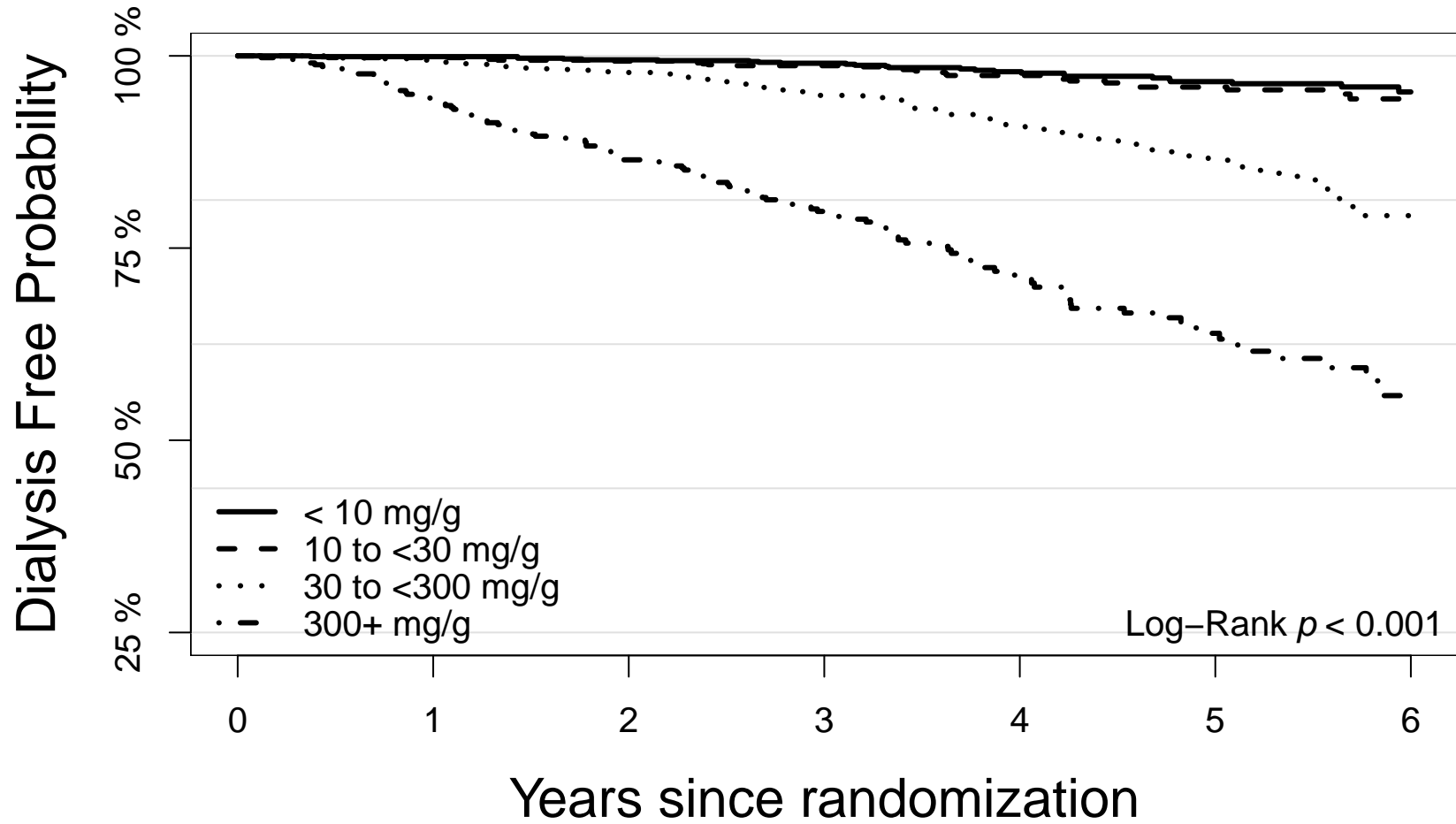


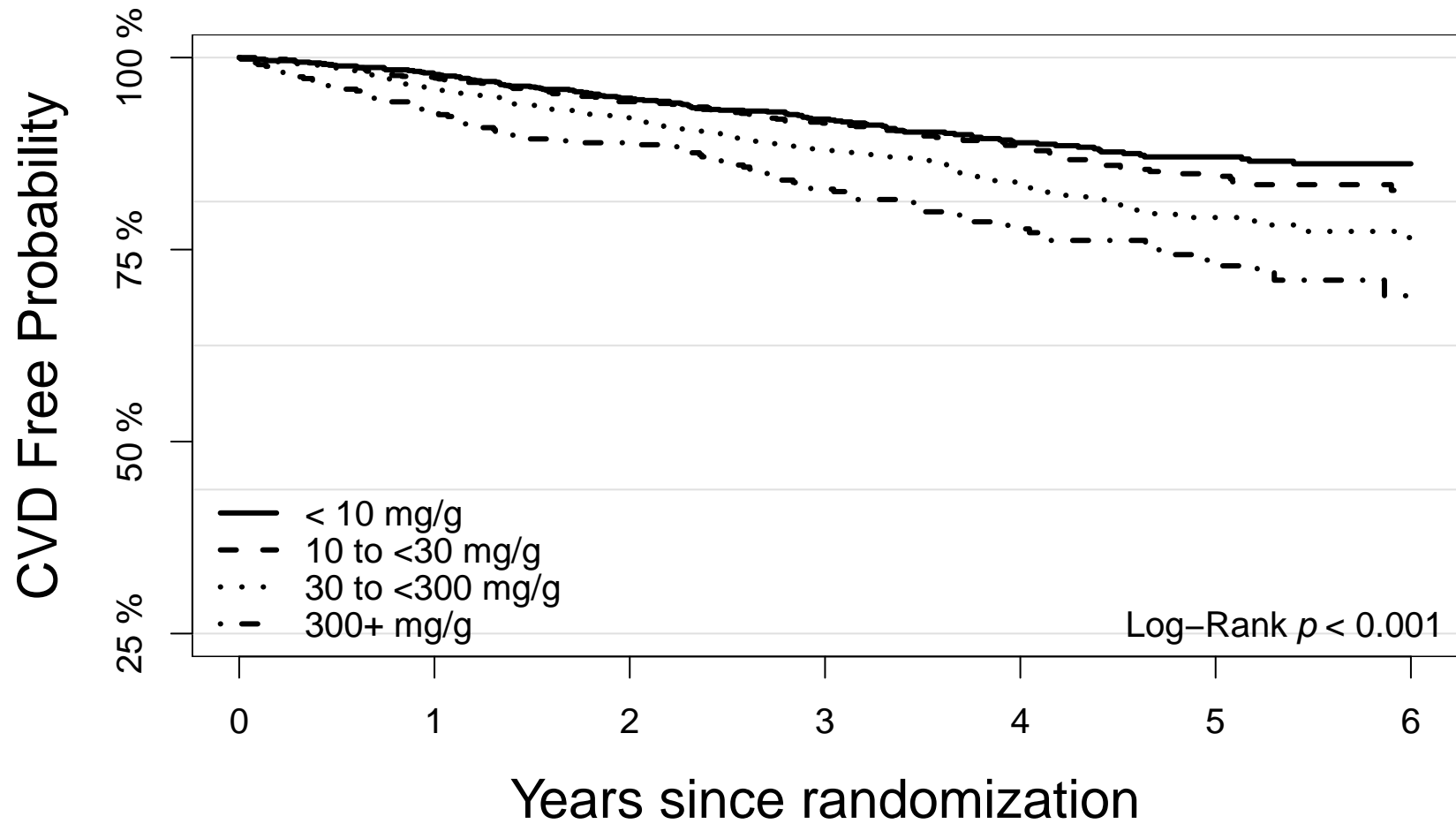
Figure S3. Association of urine ACR strata with (a) allograft failure, (b) cardiovascular disease events, (c) all-cause mortality, and (d) the composite of allograft failure and all-cause mortality, based on multivariable-adjusted models, presented for key subgroups. The X-axis is the adjusted hazard ratio and has been log-transformed. The solid vertical line indicates a hazard ratio of 1.00. The p-value for interactions appears between the hazard ratio groups to which it refers.

(a)



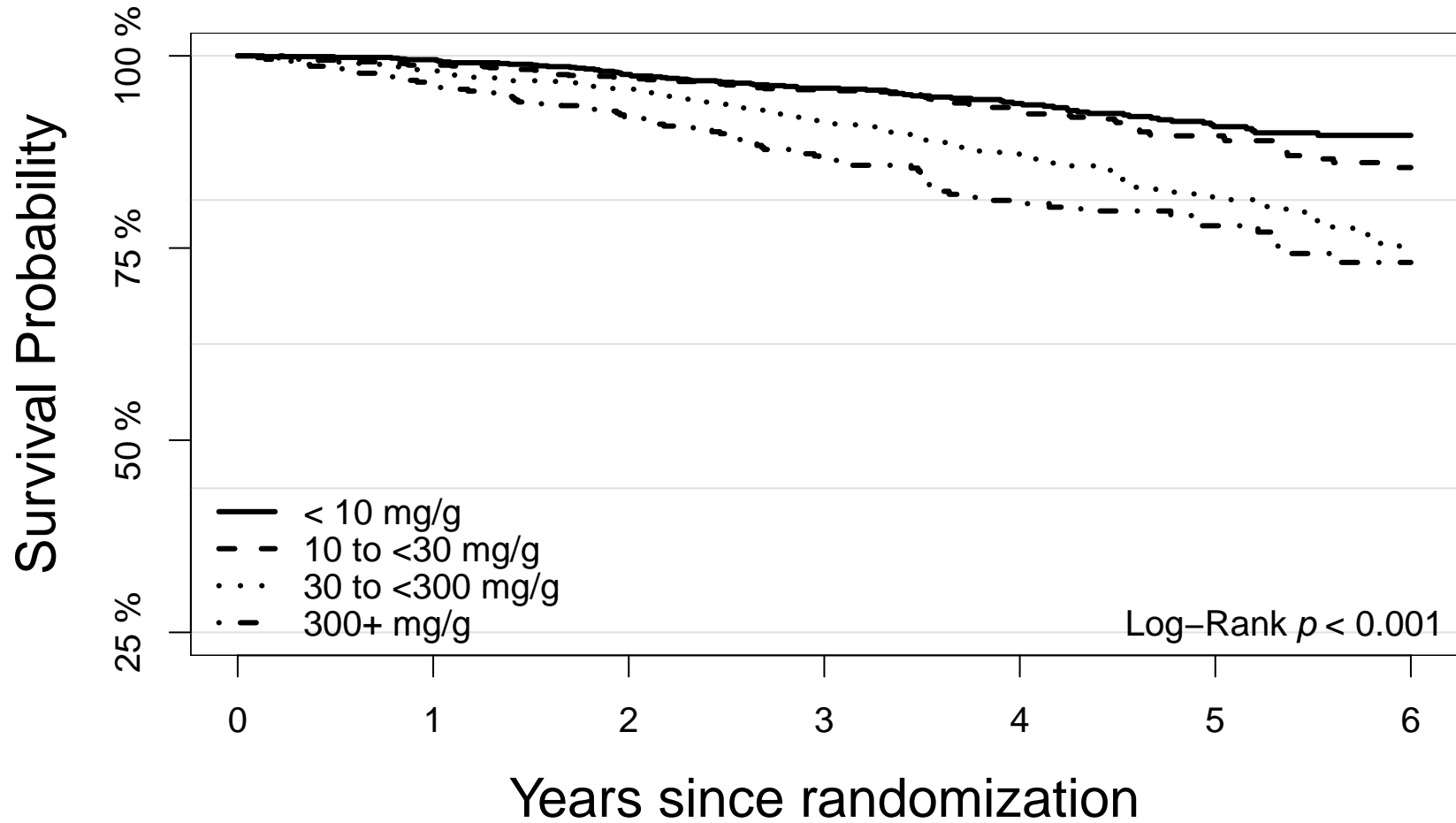
Patients at risk							
	0	1	2	3	4	5	6
< 10 mg/g	1017	984	944	802	518	372	128
10 to <30 mg/g	912	886	848	702	427	279	103
30 to <300 mg/g	1134	1068	999	778	463	295	78
300+ mg/g	448	387	335	249	140	86	21

(b)



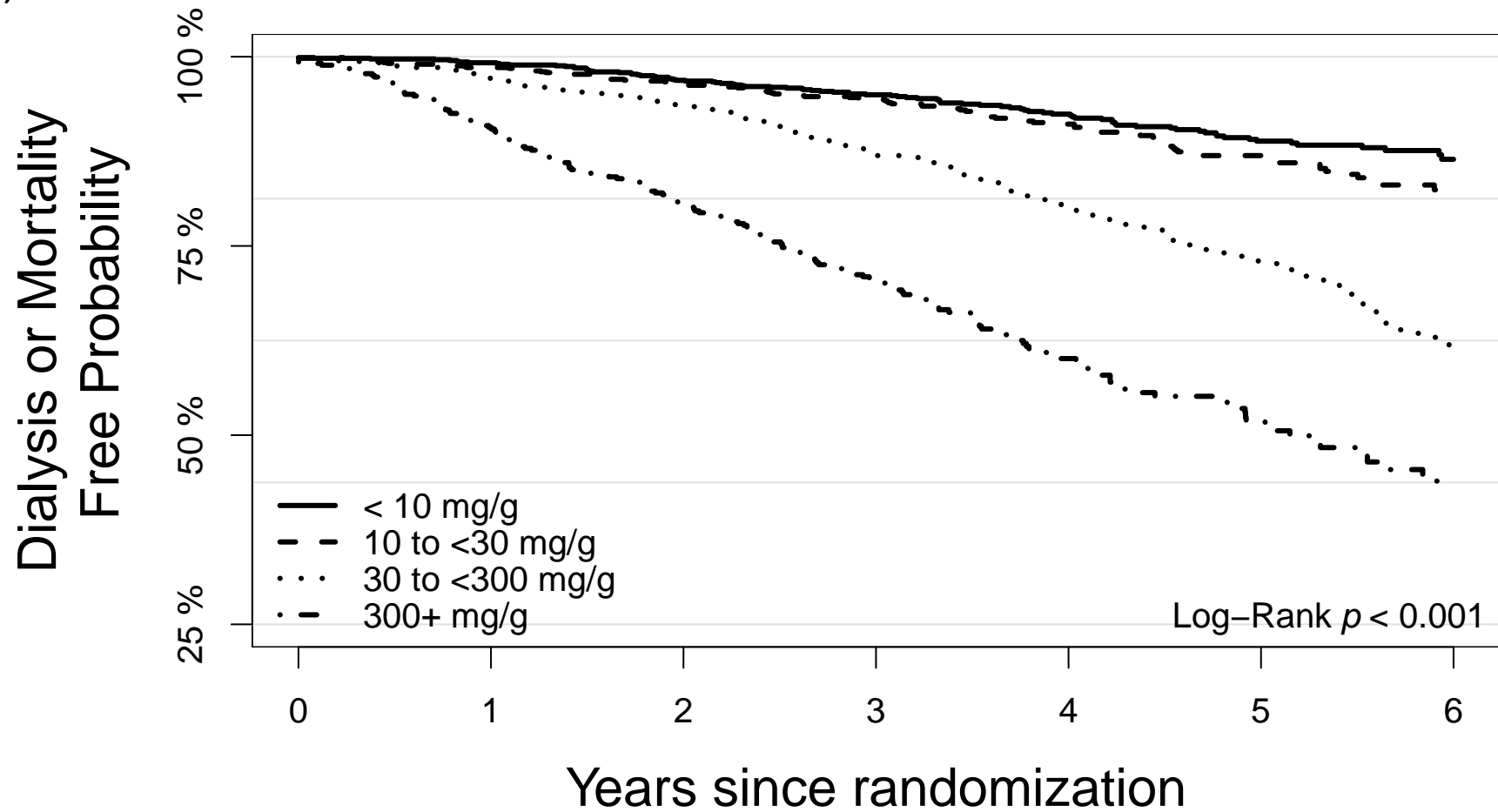
Patients at risk							
	0	1	2	3	4	5	6
< 10 mg/g	1017	966	908	755	483	346	118
10 to <30 mg/g	912	870	815	656	391	252	92
30 to <300 mg/g	1134	1043	957	745	446	288	85
300+ mg/g	448	389	349	266	161	99	26

(c)



Patients at risk							
	0	1	2	3	4	5	6
< 10 mg/g	1017	996	958	816	534	387	133
10 to <30 mg/g	912	895	861	712	446	290	109
30 to <300 mg/g	1134	1086	1039	825	505	327	97
300+ mg/g	448	415	380	299	186	114	31

(d)



Patients at risk							
	0	1	2	3	4	5	6
< 10 mg/g	1017	993	951	810	526	378	127
10 to <30 mg/g	912	893	855	707	437	283	106
30 to <300 mg/g	1134	1075	1017	792	472	298	81
300+ mg/g	448	393	338	252	142	87	21