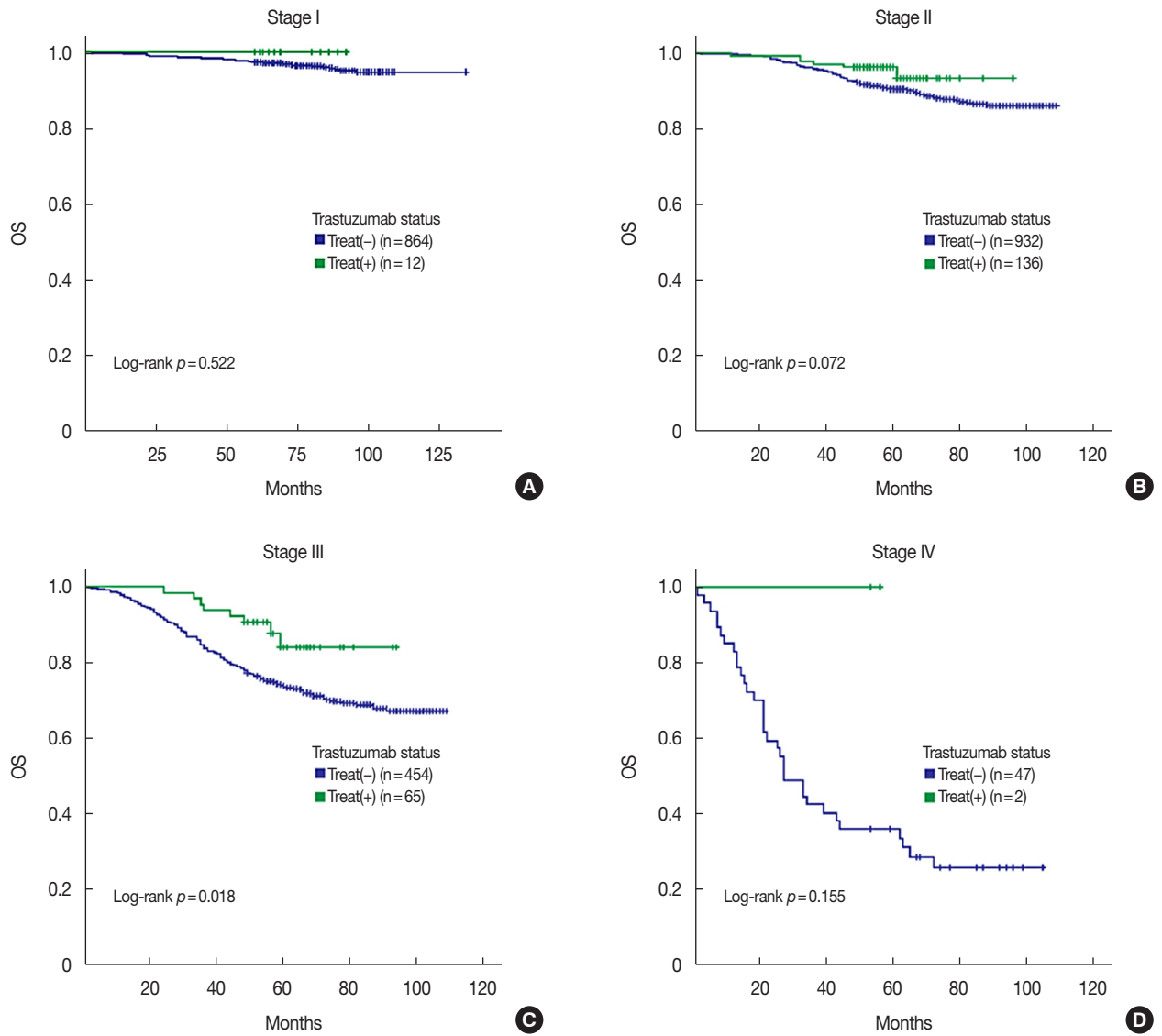


Clinical Differences in Triple-Positive Breast Cancer Subtype



Supplementary Figure 1. Efficacy of trastuzumab for human epidermal growth factor receptor 2 (HER2)-enriched breast cancer in the Korean Breast Cancer Society cohort (2006–2010). Cases were staged according to the 7th edition of the American Joint Committee on Cancer staging system for breast cancer. Overall survival (OS) was estimated using Kaplan-Meier survival analysis. (A) Stage I, (B) stage II, (C) stage III, and (D) stage IV.